

# A 3p26-3p25 Genetic Linkage Finding for DSM-IV Major Depression in Heavy Smoking Families

Michele L. Pergadia, Ph.D.      Scott D. Gordon, Ph.D.  
 Anne L. Glowinski, M.D., M.P.E.      Jacqueline M. Vink, Ph.D.  
 Naomi R. Wray, Ph.D.      Eco J.C. de Geus, Ph.D.  
 Arpana Agrawal, Ph.D.      Stuart MacGregor, Ph.D.  
 Scott F. Saccone, Ph.D.      Jimmy Z. Liu, B.Sc. (Hons.)  
 Anu Loukola, Ph.D.      Gonneke Willemsen, Ph.D.  
 Ulla Boms, Ph.D.      Sarah E. Medland, Ph.D.  
 Tellervo Korhonen, Ph.D.      Dorret I. Boomsma, Ph.D.  
 Brenda W.J.H. Penninx, Ph.D.      Grant W. Montgomery, Ph.D.  
 Julia D. Grant, Ph.D.      John P. Rice, Ph.D.  
 Elliot C. Nelson, M.D.      Alison M. Goate, D.Phil.  
 Anjali K. Henders, B.Sc. (Hons.)      Andrew C. Heath, D.Phil.  
 Andrew J. Schrage, M.S.      Jaakko Kaprio, M.D., Ph.D.  
 Yi-Ling Chou, M.S.      Nicholas G. Martin, Ph.D.  
 Kaisu Keskitalo-Vuokko, Ph.D.      Pamela A.F. Madden, Ph.D.  
 Qin Zhu, M.S.

**Objective:** The authors tested for genetic linkage of DSM-IV-diagnosed major depressive disorder in families that were ascertained for cigarette smoking.

**Method:** Within a study that targeted families characterized by a history of smoking, analyses derived a subset of 91 Australian families with two or more offspring with a history of DSM-IV major depressive disorder (affected sibling pairs, N=187) and 25 Finnish families (affected sibling pairs, N=33). Within this affected sibling pairs design, the authors conducted nonparametric linkage analysis.

**Results:** In the Australian heavy smoking families, the authors found a genome-wide significant multipoint LOD score of 4.14 for major depressive disorder on chromosome 3 at 24.9 cM (3p26-3p25).

**Conclusions:** Genome-wide significant linkage was detected for major depressive disorder on chromosome 3p in a sample ascertained for smoking. A linkage peak at this location was also observed in an independent study of major depressive disorder.

(*Am J Psychiatry* 2011; 168:848–852)

Genetic linkage studies of major depressive disorder have found suggestive evidence across multiple genomic regions but with little convergence of findings (1). Genetic association findings, including those from genome-wide association studies (GWASs), have been similarly disparate (2–7). These inconsistencies raise the question of whether major depressive disorder encompasses a number of poorly understood subtypes (e.g., depression in smokers). Among cigarette smokers seeking cessation treatment, lifetime rates of major depression have been estimated at over 60% (8). Cigarette smokers with a history of depression tend to report more severe nicotine withdrawal symptoms (9–11), are more likely to relapse to smoking after an attempt to quit (8), and may be at increased risk

for a recurrent episode of depression after smoking cessation (12). Models describing the relationship between symptoms of depression and cigarette smoking include examples of shared genetic risk (13). We carried out genetic linkage analyses of DSM-IV-diagnosed major depressive disorder in two samples that are part of the Nicotine Addiction Genetics project (14, 15), an international consortium focused on tobacco dependence. We used an affected sibling-pair design, in which at least two adult offspring per family reported a history of DSM-IV major depressive disorder, and tested for linkage. Results appear to confirm a genome-wide significant linkage signal at chromosome 3p26-3p25, also reported in an independent linkage study of major depressive disorder conducted by Breen et al. (16).

This article is featured in this month's AJP **Audio** and is discussed in a review article by Dr. Hamilton (p. 783)

## Method

### Samples

The Nicotine Addiction Genetics linkage project enrolled participants at the Queensland Institute of Medical Research in Australia and the University of Helsinki in Finland. Both sites utilized twin registries and targeted families of index cases with a previously reported history of cigarette smoking in interview or questionnaire surveys; the Australian site used a higher threshold measure when recruiting index cases with a history of heavy smoking (14). These original linkage samples included microsatellite marker data and telephone diagnostic interviews for 289 families from the Australian site (offspring,  $N=917$ ; parents,  $N=392$ ) and 161 families from the Finnish site (offspring,  $N=522$ ; parents,  $N=19$ ). More than 90% of the participants from the Australian site were of Anglo-Celtic or Northern European ancestry, and all of the participants from the Finnish site were of Finnish ancestry. The assessment included a diagnostic telephone interview, adapted from the Semi-Structured Assessment for the Genetics of Alcoholism (17, 18), which obtained a comprehensive evaluation of lifetime DSM-IV (19) major depressive disorder as well as a tobacco use and dependence assessment derived from the Composite International Diagnostic Interview (20). Additional details on the original samples and assessments have been described elsewhere (14, 15, 21). For the present study, we conducted genetic linkage analyses using the 91 Australian families who had one or more affected sibling pairs concordant for a history of major depressive disorder ( $N=187$ ). In the Finnish sample, only 25 families had one or more affected sibling pairs ( $N=33$ ), and thus the primary analyses focused on the Australian sample. A summary of the two major depressive disorder linkage samples is presented in Table 1 of the data supplement accompanying the online version of this article.

### Analyses

For both the Australian and Finnish samples, 381 autosomal microsatellite markers were genotyped and spaced at approximately 10 cM across the genome, positioned using the deCODE Genetics (Reykjavik, Iceland) map (22). Details of genotyping, including quality control procedures, are described elsewhere (14, 15). Single- and multipoint affected sibling pair nonparametric linkage (the latter using a 2-cM grid) was conducted in MERLIN (Multipoint Engine for Rapid Likelihood Inference [23]), which generated LOD scores (24, 25). Upon detection of LOD scores  $>3$ , genome-wide corrected  $p$  values were calculated from 1,000 replicates simulated in MERLIN (26, 27).

Follow-up fine mapping included the addition of 290 single nucleotide polymorphisms (SNPs) on chromosome 3 that were available for a portion of the Australian major depressive disorder linkage sample (84 out of 91 families), from other Australian projects with overlapping samples that obtained GWAS data (see reference 28). Through the use of Snagger software (29), these SNPs were selected to be in low linkage disequilibrium (maximum pairwise  $r^2=0.2$ ), to have a minor allele frequency  $>40\%$ , and to have a minimum distance between two tags of 450 kb in order to optimize information content.

## Results

For the Australian linkage sample, a multipoint LOD score of 4.14 for major depressive disorder was found on chromosome 3 (at 24.9 cM). The highest single-point linkage signal emerged at microsatellite marker D3S1304, with a LOD score of 3.7. The LOD score of 4.14 at 3p in this sample met genome-wide significance ( $p=0.004$ ). A com-

plete report of these single- and multipoint findings, along with marker positions by chromosome, is provided in Table 2 of the data supplement. The addition of 290 SNPs on chromosome 3 narrowed the linkage locus and increased the LOD score to 4.55 (at 25.3 cM) (Figure 1). For the Finnish major depressive disorder sample, a multipoint LOD score of 2.10 was found on chromosome 20 (at 90.9 cM).

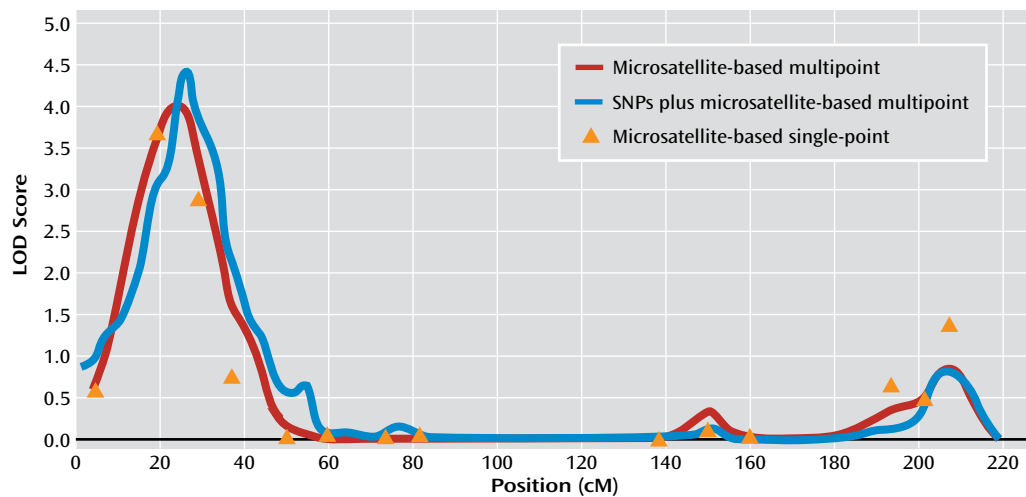
Given that no linkage signals greater than 1.5 overlapped across both samples, we did not conduct a combined analysis. However, if we were to correct conservatively for testing in both samples by doubling the  $p$  value generated from the 1,000 simulations, we would still maintain a genome-wide significant  $p$  value of 0.008.

## Discussion

Overall, major depressive disorder was associated with a significant genetic linkage peak (a LOD score of 4.14) on chromosome 3 in the Nicotine Addiction Genetics Australian sample, replicating the linkage reported at the same location by Breen et al. (16). These converging findings suggest that the genomic region spanning across 3p26-3p25 is an important area for further investigation in genetic research on major depressive disorder. Given the small number of Finnish affected sibling pairs, the lack of confirmation in this particular sample is not unexpected. The genetic variants accounting for this linkage signal have not yet been convincingly identified. Although our highest single-point microsatellite marker (D3S1304 [LOD score=3.7]) lies within the metabotropic glutamate receptor 7 gene (*GRM7*), subsidiary association analyses within a one-LOD support interval, using GWAS data available in the Australian sample (28), found only nominal association for two SNPs within *GRM7* ( $p<0.05$ ). Even our strongest association effect, which was a  $p$  value of 0.00014 for rs6765537 (a nonsynonymous SNP within *C3orf20* at 33.87 cM), did not replicate in the Finnish families, nor did it replicate in the Genetic Association Information Network major depressive disorder sample from the Netherlands (2, 30). Thus, while others have found suggestive association between SNPs in *GRM7* and major depressive disorder (7, 31), genome-wide significant effects have not been reported. Further, because linkage implicates very broad regions, *GRM7* is among many genes that might be hypothesized to explain our signal.

In terms of other linkage findings, one for quantity smoked in samples ascertained for depression has been reported near our chromosome 3 finding for major depressive disorder (32), raising the possibility of common genetic influences across major depressive disorder and smoking-related behavior or of gene-by-environment (i.e., smoking) interaction effects on major depressive disorder.

There are important limitations associated with our results. Our sample of 91 families is small by standards of modern genomic efforts. Thus, we cannot exclude the possibility that our finding is a false positive that coin-

FIGURE 1. Findings Observed on Chromosome 3 in an Australian Major Depressive Disorder Linkage Sample<sup>a</sup>

<sup>a</sup> The sample is taken from the Nicotine Addiction Genetics linkage project. The LOD score of 4.14 meets genome-wide significance ( $p=0.004$ ), with 1,000 simulations in MERLIN.

identally appears to replicate that of Breen et al. (16), whose sample is much larger (>800 families). Additionally, our finding at 3p26-3p25 (highest peak at 24.9 cM) does not align with the meta-analyses results reported by McMahon et al. (33), who suggest that variants located at 3p21.1 (at approximately 70–72 cM) are associated with mood disorders. Our future efforts to localize the genetic variants influencing major depressive disorder will entail confirmatory analyses in other samples and additional genotyping in this region on chromosome 3p.

Received Sept. 17, 2010; revisions received Dec. 21, 2010 and Feb. 22, 2011; accepted Feb. 28, 2011 (doi: 10.1176/appi.ajp.2011.10091319). From the Department of Psychiatry, Washington University School of Medicine, Saint Louis; the Department of Genetics, Washington University School of Medicine, St. Louis; the Public Health Genomics Unit, National Institute for Health and Welfare, Helsinki; the Institute for Molecular Medicine Finland (FIMM), University of Helsinki, Helsinki; the Department of Public Health, Hjelt Institute, University of Helsinki, Helsinki; the Queensland Institute of Medical Research, Brisbane, Australia; the Department of Mental Health and Substance Abuse Services, National Institute of Health and Welfare, Helsinki; the Department of Psychiatry and EMGO Institute for Health and Care Research, Vrije Universiteit University Medical Center, Amsterdam; and the Department of Biological Psychology, Vrije Universiteit University Amsterdam, Amsterdam. Address correspondence and reprint requests to Dr. Pergadia, Washington University School of Medicine, Department of Psychiatry, CB 8134 660 S. Euclid Ave., St. Louis, MO 63110; pergadim@psychiatry.wustl.edu (e-mail).

Dr. Pergadia receives funding from a K08 award (grant DA019951) from the National Institute on Drug Abuse. Dr. Glowinski is the principal investigator for the National Institutes of Health grant MH-073151 and a co-investigator of grants AA015210 and R49CE001510; she also serves on the advisory board for the Klingenstein Third Generation Foundation. Dr. Wray has received speaker's honorarium from Eli Lilly; she also receives funding from an Australian Research Council Future Fellowship. Dr. Agrawal receives funding from the National Institutes of Health and has served as a principal investigator for the Alcoholic Beverage Medical Research Foundation/The Foundation for Alcohol Research. Dr. Saccone receives funding from the National Institutes of Health (grant DA024722). Dr. Loukola receives fund-

ing from an Academy of Finland postdoctoral fellowship. Dr. Broms has received funding from the Doctoral Programs of Public Health, University of Helsinki; and she has received a consultation fee from Pfizer (for nicotine dependence measurements). Dr. Grant receives funding from the National Institutes of Health. Dr. Nelson has received research support from the National Institutes of Health and the U.S. Department of Defense. Ms. Chou receives salary funding through a National Institutes of Health grant. Dr. Vink receives funding from the Netherlands Organisation for Scientific Research (VENI grant 451-06-004). Dr. MacGregor receives funding from an Australian National Health and Medical Research Council fellowship. Mr. Liu receives funding from the Australian National Health and Medical Research Council (project grant 496675). Dr. Medland receives funding from a National Health and Medical Research Council (Australia) Sidney Sax Fellowship. Dr. Montgomery receives funding from an Australian National Health and Medical Research Council fellowship. Dr. Goate has received research funding and speaker's honoraria from AstraZeneca, Genentech, and Pfizer; she has also received advisory panel payment from AstraZeneca. Dr. Heath has received funding from the National Institutes of Health (grants AA07728, AA07580, AA11998, AA13320, AA13321, and AA017688). Dr. Kaprio has received a consultation fee from Pfizer (for pharmacogenetics for smoking cessation) as well as an unrestricted grant from Pfizer for the Global Research Awards for Nicotine Dependence; he has also received funding from the Academy of Finland Center of Excellence for Complex Disease Genetics. Dr. Madden is principal investigator for the National Institutes of Health grants DA12854 and DA027995; she is also coinvestigator for grants AA011998, AA017915, DA018267, and DA23668. All other authors report no financial relationships with commercial interests.

Supported by a Center for Inherited Disease Research grant to fund genome-wide association studies (to the late Dr. Richard Todd, former principal investigator of grant AA13320) and the European Union (contract number QL62-CT-2002-01254 [Dr. Kaprio]).

Funding for the Genetic Association Information Network (GAIN) major depressive disorder study (parent studies were the Netherlands Study of Depression and Anxiety and the Netherlands Twin Register) was provided by the Netherlands Scientific Organization (grants 904-61-090, 904-61-193, 480-04-004, 400-05-717, and 911-09-032); the Netherlands Organisation for Scientific Research Genomics program (grant SPI-56-464-14192); the Centre for Neurogenomics and Cognitive Research; the Genetics of Mental Illness (grant ERC-230374); the European Union (grant EU/WLRT-2001-01254); ZonMW (geestkracht program grant 10-000-1002); the National Institute of Mental Health (grant R01 MH-059160); and matching funds from participating institutes of the Netherlands Study of Depression and Anxiety and the Netherlands Twin Register. The genotyping of GAIN samples was pro-

vided through grant MH-081802. The data set can be found online at <http://www.ncbi.nlm.nih.gov/gap> through dbGaP accession number phs000020.v2.p1.

The Nicotine Addiction Genetics project is an international collaborative study that includes the following three sites: Queensland Institute of Medical Research, Queensland, Australia (principal investigator, Dr. Martin); the University of Helsinki, Helsinki (principal investigator, Dr. Kaprio); and Washington University, St. Louis (principal investigator, Dr. Madden). Data collection is conducted at the Queensland Institute of Medical Research and the University of Helsinki, with Washington University serving as the coordinating site and lead institution. Genotyping and data analysis are conducted at all three sites.

The authors acknowledge the important roles of Drs. Richard Todd and Leena Peltonen, two recently deceased senior investigators, for their contributions to the present project and, more broadly, to the field of psychiatric genetics.

The authors also thank the Australian and Finnish families for their participation and cooperation as well as the staff from all three Nicotine Addiction Genetics project sites.

## References

- Levinson DF: The genetics of depression: a review. *Biol Psychiatry* 2006; 60:84–92
- Sullivan PF, de Geus EJ, Willemsen G, James MR, Smit JH, Zandbelt T, Arolt V, Baune BT, Blackwood D, Cichon S, Coventry WL, Domschke K, Farmer A, Fava M, Gordon SD, He Q, Heath AC, Heutink P, Holsboer F, Hoogendijk WJ, Hottenga JJ, Hu Y, Kohli M, Lin D, Lucae S, Macintyre DJ, Maier W, McGhee KA, McGuffin P, Montgomery GW, Muir WJ, Nolen WA, Nöthen MM, Perlis RH, Pirlo K, Posthuma D, Rietschel M, Rizzu P, Schosser A, Smit AB, Smoller JW, Tzeng JY, van Dyck R, Verhage M, Zitman FG, Martin NG, Wray NR, Boomsma DI, Penninx BW: Genome-wide association for major depressive disorder: a possible role for the presynaptic protein piccolo. *Mol Psychiatry* 2009; 14:359–375
- Lewis CM, Ng MY, Butler AW, Cohen-Woods S, Uher R, Pirlo K, Weale ME, Schosser A, Paredes UM, Rivera M, Craddock N, Owen MJ, Jones L, Jones I, Korszun A, Aitchison KJ, Shi J, Quinn JP, Mackenzie A, Vollenweider P, Waeber G, Heath S, Lathrop M, Muglia P, Barnes MR, Whittaker JC, Tozzi F, Holsboer F, Preisig M, Farmer AE, Breen G, Craig IW, McGuffin P: Genome-wide association study of major recurrent depression in the UK population. *Am J Psychiatry* 2010; 167:949–957
- Bosker FJ, Hartman CA, Nolte IM, Prins BP, Terpstra P, Posthuma D, van Veen T, Willemsen G, Derijk RH, de Geus EJ, Hoogendijk WJ, Sullivan PF, Penninx BW, Boomsma DI, Snieder H, Nolen WA: Poor replication of candidate genes for major depressive disorder using genome-wide association data. *Mol Psychiatry* (Epub ahead of print, March 30, 2010)
- Wray NR, Pergadia ML, Blackwood DH, Penninx BW, Gordon SD, Nyholt DR, Ripke S, Macintyre DJ, McGhee KA, Maclean AW, Smit JH, Hottenga JJ, Willemsen G, Middeldorp CM, de Geus EJ, Lewis CM, McGuffin P, Hickie IB, van den Oord EJ, Liu JZ, Macgregor S, McEvoy BP, Byrne EM, Medland SE, Statham DJ, Henders AK, Heath AC, Montgomery GW, Martin NG, Boomsma DI, Madden PA, Sullivan PF: Genome-wide association study of major depressive disorder: new results, meta-analysis, and lessons learned. *Mol Psychiatry* (Epub ahead of print, November 2, 2010)
- Shi J, Potash JB, Knowles JA, Weissman MM, Coryell W, Scheftner WA, Lawson WB, DePaulo JR Jr, Gejman PV, Sanders AR, Johnson JK, Adams P, Chaudhury S, Jancic D, Evgrafov O, Zvin-yatskovskiy A, Ertman N, Gladis M, Neimanas K, Goodell M, Hale N, Ney N, Verma R, Mirel D, Holmans P, Levinson DF: Genome-wide association study of recurrent early-onset major depressive disorder. *Mol Psychiatry* 2011; 16:193–201
- Shyn SI, Shi J, Kraft JB, Potash JB, Knowles JA, Weissman MM, Garriock HA, Yokoyama JS, McGrath PJ, Peters EJ, Scheftner WA, Coryell W, Lawson WB, Jancic D, Gejman PV, Sanders AR, Holmans P, Slager SL, Levinson DF, Hamilton SP: Novel loci for major depression identified by genome-wide association study of Sequenced Treatment Alternatives to Relieve Depression and meta-analysis of three studies. *Mol Psychiatry* 2011; 16:202–215
- Glassman AH, Stetner F, Walsh BT, Raizman PS, Fleiss JL, Cooper TB, Covey LS: Heavy smokers, smoking cessation, and clonidine: results of a double-blind, randomized trial. *JAMA* 1988; 259:2863–2866
- Covey LS, Glassman AH, Stetner F: Depression and depressive symptoms in smoking cessation. *Compr Psychiatry* 1990; 31:350–354
- Madden PA, Bucholz KK, Dinwiddie SH, Slutske WS, Bierut LJ, Statham DJ, Dunne MP, Martin NG, Heath AC: Nicotine withdrawal in women. *Addiction* 1997; 92:889–902
- Pergadia ML, Agrawal A, Heath AC, Martin NG, Bucholz KK, Madden PA: Nicotine withdrawal symptoms in adolescent and adult twins. *Twin Res Hum Genet* 2010; 13:359–369
- Glassman AH, Covey LS, Stetner F, Rivelli S: Smoking cessation and the course of major depression: a follow-up study. *Lancet* 2001; 357:1929–1932
- Kendler KS, Neale MC, MacLean CJ, Heath AC, Eaves LJ, Kessler RC: Smoking and major depression: a causal analysis. *Arch Gen Psychiatry* 1993; 50:36–43
- Saccone SF, Pergadia ML, Loukola A, Broms U, Montgomery GW, Wang JC, Agrawal A, Dick DM, Heath AC, Todorov AA, Maunu H, Heikkilä K, Morley KI, Rice JP, Todd RD, Kaprio J, Peltonen L, Martin NG, Goate AM, Madden PA: Genetic linkage to chromosome 22q12 for a heavy-smoking quantitative trait in two independent samples. *Am J Hum Genet* 2007; 80:856–866
- Loukola A, Broms U, Maunu H, Widén E, Heikkilä K, Siivola M, Salo A, Pergadia ML, Nyman E, Sammalisto S, Perola M, Agrawal A, Heath AC, Martin NG, Madden PA, Peltonen L, Kaprio J: Linkage of nicotine dependence and smoking behavior on 10q, 7q and 11p in twins with homogeneous genetic background. *Pharmacogenomics* 2008; 8:209–219
- Breen G, Webb BT, Butler AW, van den Oord EJCG, Tozzi F, Craddock N, Gill M, Korszun A, Maier W, Middleton L, Mors O, Owen MJ, Cohen-Woods S, Perry J, Galwey NW, Upmanyu R, Craig I, Lewis CM, Ng M, Brewster S, Preisig M, Rietschel M, Jones L, Knight J, Rice J, Muglia P, Farmer AE, McGuffin P: A genome-wide significant linkage for severe depression on chromosome 3: the Depression Network Study. *Am J Psychiatry* (published online May 16, 2011; doi:10.1176/appi.ajp.2011.10091342)
- Bucholz KK, Cadoret R, Cloninger CR, Dinwiddie SH, Hesselbrock VM, Nurnberger JI Jr, Reich T, Schmidt I, Schuckit MA: A new, semi-structured psychiatric interview for use in genetic linkage studies: a report on the reliability of the SSAGA. *J Stud Alcohol* 1994; 55:149–158
- Hesselbrock M, Easton C, Bucholz KK, Schuckit M, Hesselbrock V: A validity study of the SSAGA: a comparison with the SCAN. *Addiction* 1999; 94:1361–1370
- American Psychiatric Association: *Diagnostic and Statistical Manual of Mental Disorders, 4th ed (DSM-IV)*. Washington, DC, American Psychiatric Publishing, 1994
- Cottler LB, Robins LN, Grant BF, Blaine J, Towle LH, Wittchen HU, Sartorius N: The CIDI-core substance abuse and dependence questions: cross-cultural and nosological issues: the WHO/ADAMHA Field Trial. *Br J Psychiatry* 1991; 159:653–658
- Pergadia ML, Agrawal A, Loukola A, Montgomery GW, Broms U, Saccone SF, Wang JC, Todorov AA, Heikkilä K, Statham DJ, Henders AK, Campbell MJ, Rice JP, Todd RD, Heath AC, Goate AM, Peltonen L, Kaprio J, Martin NG, Madden PA: Genetic linkage findings for DSM-IV nicotine withdrawal in two populations. *Am J Med Genet B Neuropsychiatr Genet* 2009; 150B:950–959
- Kong A, Gudbjartsson DF, Sainz J, Jonsdottir GM, Gudjonsson SA, Richardsson B, Sigurdardottir S, Barnard J, Hallbeck B, Masson G, Shlien A, Palsson ST, Frigge ML, Thorgeirsson TE, Gulcher

- JR, Stefansson K: A high-resolution recombination map of the human genome. *Nat Genet* 2002; 31:241–247
23. Abecasis GR, Cherny SS, Cookson WO, Cardon LR: MERLIN: rapid analysis of dense genetic maps using sparse gene flow trees. *Nat Genet* 2002; 30:97–101
  24. Kong A, Cox NJ: Allele-sharing models: LOD scores and accurate linkage tests. *Am J Hum Genet* 1997; 61:1179–1188
  25. Whittemore AS, Halpern J: A class of tests for linkage using affected pedigree members. *Biometrics* 1994; 50:118–127
  26. North BV, Curtis D, Sham PC: A note on the calculation of empirical p values from Monte Carlo procedures. *Am J Hum Genet* 2002; 71:439–441
  27. North BV, Curtis D, Sham PC: A note on calculation of empirical p values from Monte Carlo procedure. *Am J Hum Genet* 2003; 72:498–499
  28. Medland SE, Nyholt DR, Painter JN, McEvoy BP, McRae AF, Zhu G, Gordon SD, Ferreira MA, Wright MJ, Henders AK, Campbell MJ, Duffy DL, Hansell NK, Macgregor S, Slutske WS, Heath AC, Montgomery GW, Martin NG: Common variants in the trichohyalin gene are associated with straight hair in Europeans. *Am J Hum Genet* 2009; 85:750–755
  29. Edlund CK, Lee WH, Li D, van den Berg DJ, Conti DV: Snagger: a user-friendly program for incorporating additional information for tagSNP selection. *BMC Bioinformatics* 2008; 9:174
  30. Boomsma DI, Willemsen G, Sullivan PF, Heutink P, Meijer P, Sondervan D, Kluff C, Smit G, Nolen WA, Zitman FG, Smit JH, Hoogendijk WJ, van Dyck R, de Geus EJ, Penninx BW: Genome-wide association of major depression: description of samples for the GAIN Major Depressive Disorder Study: NTR and NESDA biobank projects. *Eur J Hum Genet* 2008; 16:335–342
  31. Muglia P, Tozzi F, Galwey NW, Francks C, Upmanyu R, Kong XQ, Antoniadou A, Domenici E, Perry J, Rothen S, Vandeleur CL, Mooser V, Waeber G, Vollenweider P, Preisig M, Lucae S, Müller-Myhsok B, Holsboer F, Middleton LT, Roses AD: Genome-wide association study of recurrent major depressive disorder in two European case-control cohorts. *Mol Psychiatry* 2010; 15:589–601
  32. Vink JM, Beem AL, Posthuma D, Neale MC, Willemsen G, Kendler KS, Slagboom PE, Boomsma DI: Linkage analysis of smoking initiation and quantity in Dutch sibling pairs. *Pharmacogenomics J* 2004; 4:274–282
  33. McMahon FJ, Akula N, Schulze TG, Muglia P, Tozzi F, Detera-Wadleigh SD, Steele CJ, Breuer R, Strohmaier J, Wendland JR, Mattheisen M, Mühleisen TW, Maier W, Nöthen MM, Cichon S, Farmer A, Vincent JB, Holsboer F, Preisig M, Rietschel M; Bipolar Disorder Genome Study (BiGS) Consortium: Meta-analysis of genome-wide association data identifies a risk locus for major mood disorders on 3p21.1. *Nat Genet* 2010; 42:128–131