

# Identification of Common Genetic Variants Influencing Spontaneous Dizygotic Twinning and Female Fertility

Hamdi Mbarek,<sup>1,22,23,24,\*</sup> Stacy Steinberg,<sup>2,23</sup> Dale R. Nyholt,<sup>3,4,23</sup> Scott D. Gordon,<sup>4</sup> Michael B. Miller,<sup>5</sup> Allan F. McRae,<sup>4,6</sup> Jouke Jan Hottenga,<sup>1,22</sup> Felix R. Day,<sup>21</sup> Gonneke Willemsen,<sup>1,22</sup> Eco J. de Geus,<sup>1,22</sup> Gareth E. Davies,<sup>7</sup> Hilary C. Martin,<sup>8</sup> Brenda W. Penninx,<sup>9</sup> Rick Jansen,<sup>9</sup> Kerrie McAloney,<sup>4</sup> Jacqueline M. Vink,<sup>1</sup> Jaakko Kaprio,<sup>10</sup> Robert Plomin,<sup>11</sup> Tim D. Spector,<sup>12</sup> Patrik K. Magnusson,<sup>13</sup> Bruno Reversade,<sup>14,15,20</sup> R. Alan Harris,<sup>16</sup> Kjersti Aagaard,<sup>16</sup> Ragnar P. Kristjansson,<sup>2</sup> Isleifur Olafsson,<sup>17</sup> Gudmundur Ingi Eyjolfsson,<sup>18</sup> Olof Sigurdardottir,<sup>19</sup> William G. Iacono,<sup>5</sup> Cornelis B. Lambalk,<sup>20</sup> Grant W. Montgomery,<sup>4</sup> Matt McGue,<sup>5</sup> Ken K. Ong,<sup>21</sup> John R.B. Perry,<sup>21</sup> Nicholas G. Martin,<sup>4</sup> Hreinn Stefánsson,<sup>2</sup> Kari Stefánsson,<sup>2</sup> and Dorret I. Boomsma<sup>1,22,\*</sup>

Spontaneous dizygotic (DZ) twinning occurs in 1%–4% of women, with familial clustering and unknown physiological pathways and genetic origin. DZ twinning might index increased fertility and has distinct health implications for mother and child. We performed a GWAS in 1,980 mothers of spontaneous DZ twins and 12,953 control subjects. Findings were replicated in a large Icelandic cohort and tested for association across a broad range of fertility traits in women. Two SNPs were identified (rs11031006 near *FSHB*,  $p = 1.54 \times 10^{-9}$ , and rs17293443 in *SMAD3*,  $p = 1.57 \times 10^{-8}$ ) and replicated ( $p = 3 \times 10^{-3}$  and  $p = 1.44 \times 10^{-4}$ , respectively). Based on ~90,000 births in Iceland, the risk of a mother delivering twins increased by 18% for each copy of allele rs11031006-G and 9% for rs17293443-C. A higher polygenic risk score (PRS) for DZ twinning, calculated based on the results of the DZ twinning GWAS, was significantly associated with DZ twinning in Iceland ( $p = 0.001$ ). A higher PRS was also associated with having children ( $p = 0.01$ ), greater lifetime parity ( $p = 0.03$ ), and earlier age at first child ( $p = 0.02$ ). Allele rs11031006-G was associated with higher serum FSH levels, earlier age at menarche, earlier age at first child, higher lifetime parity, lower PCOS risk, and earlier age at menopause. Conversely, rs17293443-C was associated with later age at last child. We identified robust genetic risk variants for DZ twinning: one near *FSHB* and a second within *SMAD3*, the product of which plays an important role in gonadal responsiveness to FSH. These loci contribute to crucial aspects of reproductive capacity and health.

## Introduction

DZ twinning (MIM: 276400) is defined as the concomitant conception and development of two independent zygotes during one pregnancy. Mothers of spontaneous (conceived without assisted reproductive technology) DZ twins have a predisposition to multiple ovulation events due to interference with single dominant follicle selection, a biological mechanism fundamental for the human species.<sup>1</sup> DZ twinning is common, with large regional differences from 6 per

1,000 births in Asia to 40 per 1,000 births in Africa,<sup>2</sup> whereas monozygotic twinning occurs around the world at a constant rate of around 3 to 4 per 1,000 births.<sup>3,4</sup> DZ twinning rates also vary substantially over time. For example, in the US, the observed incidence of twin births increased by a factor of 1.9 between 1971 and 2009.<sup>5</sup> Although a considerable part of the increase is attributable to fertility treatments, with an estimate of 36% of all twins born in the USA in 2011 resulting from assisted reproduction, the majority of twins are still conceived

<sup>1</sup>Department of Biological Psychology, Vrije Universiteit, 1081BT Amsterdam, the Netherlands; <sup>2</sup>deCODE Genetics, 101 Reykjavik, Iceland; <sup>3</sup>Institute of Health and Biomedical Innovation, Queensland University of Technology, 4059 Brisbane, Australia; <sup>4</sup>QIMR Berghofer Medical Research Institute, 4029 Brisbane, Australia; <sup>5</sup>Department of Psychology, University of Minnesota, Minneapolis, MN 55455, USA; <sup>6</sup>Queensland Brain Institute, The University of Queensland, Brisbane, QLD 4072, Australia; <sup>7</sup>Avera Institute for Human Genetics, Sioux Falls, SD 57108, USA; <sup>8</sup>Wellcome Trust Centre for Human Genetics, Oxford OX3 7BN, UK; <sup>9</sup>Department of Psychiatry and EMGO Institute for Health and Care Research, Vrije U Universiteit, Medical Center/GGZ inGeest, 1081HL Amsterdam, the Netherlands; <sup>10</sup>Institute for Molecular Medicine Finland FIMM, University of Helsinki; Department of Public Health, University of Helsinki; National Institute for Health and Welfare, 00014 Helsinki, Finland; <sup>11</sup>Medical Research Council Social, Genetic and Developmental Psychiatry Centre, Institute of Psychiatry, Psychology & Neuroscience, King's College London, London SE5 8AF, UK; <sup>12</sup>Department of Twin Research & Genetic Epidemiology, King's College London, London SE1 7EH, UK; <sup>13</sup>Department of Medical Epidemiology and Biostatistics, Karolinska Institute, 171 77 Stockholm, Sweden; <sup>14</sup>Institute of Medical Biology, Laboratory of Human Genetics and Embryology, A\*STAR, 138648 Singapore, Singapore; <sup>15</sup>Amsterdam Reproduction & Development, Academic Medical Centre, Reproductive Biology Laboratory (Q3-119), Meibergdreef 9, 1105 AZ Amsterdam, the Netherlands; <sup>16</sup>Division of Maternal-Fetal Medicine, Departments of Obstetrics and Gynecology, Molecular and Human Genetics, and Molecular and Cell Biology, Baylor College of Medicine and Texas Children's Hospital, Houston, TX 77030, USA; <sup>17</sup>Department of Clinical Biochemistry, Landspítali-The National University Hospital of Iceland, 101 Reykjavik, Iceland; <sup>18</sup>Icelandic Medical Center (Laeknasetrid), Laboratory in Mjodd (RAM), 101 Reykjavik, Iceland; <sup>19</sup>Department of Clinical Biochemistry, Akureyri Hospital, 109 Akureyri, Iceland; <sup>20</sup>Department of Obstetrics, Gynecology and Reproductive Medicine, VU University Medical Center, 1007MB Amsterdam, the Netherlands; <sup>21</sup>MRC Epidemiology Unit, University of Cambridge School of Clinical Medicine, Institute of Metabolic Science, Cambridge Biomedical Campus, Cambridge CB2 0QQ, UK; <sup>22</sup>EMGO+ Institute for Health and Care Research, 1081BT Amsterdam, the Netherlands

<sup>23</sup>These authors contributed equally to this study

<sup>24</sup>Twitter: @drHamdiMbarek

\*Correspondence: [h.mbarek@vu.nl](mailto:h.mbarek@vu.nl) (H.M.), [di.boomsma@vu.nl](mailto:di.boomsma@vu.nl) (D.I.B.)

<http://dx.doi.org/10.1016/j.ajhg.2016.03.008>.

©2016 by The American Society of Human Genetics. All rights reserved.

spontaneously. In addition to fertility treatments, increases in maternal age contribute to increases in twinning incidence.<sup>3,6</sup>

Twinning is associated with increased risks to mother and offspring, including higher risks of stillbirth, neonatal death, and premature birth. Compared to singleton children, twins use more hospital resources, especially during the first year of life,<sup>7</sup> with hospital costs in the first 5 years of life being as much as 3.3-fold higher.<sup>8</sup>

Mothers of DZ twins differ from other women in that they are taller, have an increased BMI, are more often overweight, and more often smoke before the twin pregnancy.<sup>9</sup> Family history, increased parity, and gravidity all increase the risk of spontaneous DZ twinning.<sup>1,3</sup> Remarkably, twinning rates do not reflect average nutritional status of a population, as established from longitudinal studies in countries that experienced periods of starvation, such as the Dutch hunger winter. Above a specific, yet undetermined, threshold, nutrition seems to be of minimal importance for reproduction in general and also for twinning.<sup>10</sup> These observations all point to spontaneous twinning being a heritable trait and suggest the potential for polygenic inheritance. In a landmark study of twinning based on data from genealogic records from Utah,<sup>11</sup> White and Wyshak established that the genotype of the mother, but not that of the father, affects the frequency of DZ twinning.

The underlying physiological mechanism for DZ twinning is the release and fertilization of two or more oocytes. Ovarian folliculogenesis and determination of ovulation quota are controlled both by circulating concentrations of follicle-stimulating hormone (FSH) and by intra-ovarian factors including the two oocyte growth factors, GDF9 and BMP15, as well as their cognate receptors.<sup>12</sup> In the common marmoset monkey (subfamily Callitrichinae), DZ twins comprise the predominant litter size, and singletons are rarely, if ever, observed. On DNA sequencing, specific nonsynonymous substitutions were identified in *GDF9*, *BMP15*, *BMP4*, and *WFIKKN1* as having a role in Callitrichine twinning.<sup>13</sup> These genes are among a larger set of 63 candidate genes with a potential involvement in regulation of ovulation number and/or control of growth and body size.<sup>14</sup>

Efforts to characterize the genes that contribute to DZ twinning in humans have not been successful. Candidate gene and genome-wide linkage studies failed to uncover common variants associated with DZ twinning,<sup>15–19</sup> although one study reported rare variants in *GDF9* (MIM: 601918) to be associated with DZ twinning.<sup>18</sup> In laboratory mice, DZ twinning, which is measured as litter size, is strongly dependent on genetic background. It can range from 2 to 3 DZ twins per litter in some 129 sub-strains to 12 or more DZ twins per litter in the FVB/NJ strain (see Jackson Lab Breeding Strategy manual in [Web Resources](#)). Phylogenetically, litter size is also correlated with the number of functional mammary glands—two in dolphins, a monotocous species, and eight in cats, a polytocous species—suggesting the existence of common genetic determinants.

DZ twinning has been suggested as a measure of human fertility both at the individual and at the population level.<sup>20</sup> Spontaneous DZ twinning might be considered as a marker of high fertility, because it reflects the frequency of double ovulation, the probability of coitus within the appropriate time frame with fertilization of both ova, and maintenance of a multiple pregnancy.

The aim of this study was to perform a genome-wide association study (GWAS) in mothers of spontaneous DZ twins to identify relevant genomic regions and test their significance across a broad range of female fertility and reproductive traits including age at menarche, age at natural menopause, age at first and last child, and lifetime parity. Three twin registers, from the Netherlands, Australia, and Minnesota (USA) had detailed information on spontaneous twinning in mothers of DZ twins, as well as genotype data. Replication of top hits for twinning was possible in the Icelandic population and for other measures of reproductive aging in several large-scale population meta-analyses.<sup>21–24</sup>

## Material and Methods

### Descriptions of Participating Studies

#### *Netherlands Twin Register*

The Netherlands Twin Register (NTR) sample consisted of 806 case subjects and 4,535 control subjects from the Netherlands Twin Register (2,776 participants) and the Netherlands Study of Depression and Anxiety (NESDA; 2,565 participants). NTR participants were ascertained by the presence of liveborn twins or triplets in the family and consist of multiples, their parents, siblings, and spouses. Twins were born in all strata of society and NTR represents a general sample from the Dutch population.<sup>25–28</sup> NESDA is a longitudinal study focusing on the course and consequences of depression and anxiety disorders. Subjects for NESDA were recruited from the general population, mental health organizations, and general practices. The sample includes subjects selected for depression and anxiety as well as healthy control subjects.<sup>29</sup> Zygosity of twins was confirmed by DNA genotyping. Data on mode of pregnancy were available from several data collection waves including surveys sent out to mothers of twins, a survey to parents upon registration of young twins, and telephone interviews as part of a project on DZ twinning.<sup>9</sup> The comparison of the survey data with the hospital records showed that mothers can accurately report on the mode of conception of their twins.<sup>30</sup> Participants were excluded if they reported the use of assisted reproductive technology at one or more occasions. In case no reports on mode of pregnancy were available, data were excluded unless the twins were born prior to 1985.

#### *QIMR Berghofer Medical Research Institute*

The sample used in this analysis consisted of 606 case subjects and 6,656 control subjects. The individuals were drawn from families containing (any type of) twins recruited for prior studies, either from around Australia from the Australian Twin Registry (ATR) (generally twins born before 1971) or from south-eastern Queensland (generally twins born after 1980). Study recruitment was predominantly population based (any family where the twins were willing to participate) with no screening performed on reproductive phenotypes apart from selecting families with twins. Studies

**Table 1. Number of Case and Control Subjects Included in the Meta-analysis and Replication; Mean Maternal Age at Delivery for Case Subjects**

Cohort	No. of Subjects		Mean Maternal Age at Delivery (SD)
	Case Subjects	Control Subjects	
Netherlands	806	4,535	29.7 (4.1)
Australia	606	6,556	29.8 (4.8)
Minnesota	568	1,862	28.3 (4.5)
Total discovery	1,980	12,953	29.3 (4.5)
<b>Replication</b>			
Iceland	3,597 (1,356 genotyped; 2,241 in silico)	297,348 (76,342 genotyped; 221,006 in silico)	30.3 (5.8)

for the older cohort typically were focused on personality traits but not selected for them. Zygosity of twins was reported at time of recruitment and during phenotyping studies and tested by genotyping (on SNP arrays or Sequenom assays). New phenotyping excluded mothers (case subjects) from Queensland cohort who used assisted reproductive technology (ART, typically IVF or hormone treatment) to become pregnant. Screening questions asked of the mother during clinical sessions for phenotyping were the primary basis for excluding ART cases. A smaller subset of mothers was contacted specifically to establish this information where it was not otherwise available. For the older (ATR) cohort, at the time of the twins' birth, IVF was not yet in clinical use and other ART was rare.

#### Minnesota Center for Twin and Family Research

All subjects in this sample were independently ascertained through vital records of the State of Minnesota in an effort to construct a population-based twin registry.<sup>31,32</sup> The sample for the current study consisted of 568 mothers of DZ twins and 1,862 control subjects who were the parents of MZ twins from 1,062 families, including 800 complete parental pairs, 203 mothers, and 59 fathers. Most of the twins were born in the 1970s or early 1980s, when even though fertility treatment was available in the US, it was expensive and few had access to it. Genotyping was population based and independent of phenotypes other than twinning. About 92% of the registry, and 100% of both case and control samples, are of primarily European ancestry.

#### Iceland

Mothers of twins or other multiples ("twins") were selected from among those taking part in deCODE's genetic studies based on a nation-wide genealogical database. To increase the proportion of these mothers of twins who were mothers of dizygotic twins, twins who had been genotyped and shown to be monozygotic were not used to identify mothers. Control subjects were individuals participating in deCODE's genetic research from which both mothers of twins and the mothers' first-degree relatives had been removed. For the prediction of twinning using polygenic risk scores, mothers having opposite sex or verified dizygotic twins were compared with mothers who did not have twins.

### Study Design, Genome-Wide Association Study, and Replication

We established the Twinning GWAS Consortium (TGC) to characterize the genetic basis of DZ twinning in humans and performed a

**Table 2. Sample Characteristics for Measure of Fertility**

Traits	Sample Size	Mean (SD)
Age at menarche	259,247	— <sup>a</sup>
Age at menopause	69,360	— <sup>a</sup>
FSH levels	17,997	17.7 (24.9) <sup>b</sup>
Has children	41,946	0.94 <sup>c</sup>
Number of children	41,946	2.9 (1.6)
Age at first child	41,946	23.0 (4.7)
Age at last child	41,946	32.1 (5.5)
Average birth interval	41,946	4.7 (2.5)
Polycystic ovary syndrome	5,184 cases / 82,759 controls	— <sup>a</sup>

<sup>a</sup>Sample mean is not available because this is a large meta-analysis of summary statistics.

<sup>b</sup>Unit is IU/L (median 6.8).

<sup>c</sup>Fraction with children.

genome-wide association study (GWAS) for DZ twinning utilizing data from 1,980 mothers of DZ twins (MODZT) and 12,953 control subjects from European ancestry cohorts. Sample sizes and study characteristics are described in Table 1. All case subjects underwent screening to exclude mothers who received assisted reproductive techniques. Control subjects were screened to exclude pedigrees containing DZ twins. In the replication stage, significant findings from the meta-analysis were tested in large Icelandic cohort of 3,597 mothers of twins and 297,348 control subjects. All participants provided written informed consent, including consent for genotyping and analysis, and were recruited according to the protocols approved by the institution review board of each institution.

### Fertility Traits Measures

Fertility measures (having children, number of children, age at first and last child, and average birth interval) were defined in females born before 1970 based on the Icelandic genealogy. Data for age at menarche, age at menopause, and polycystic ovary syndrome were derived from previously published GWAS consortia.<sup>21–24</sup> Sample sizes and study characteristics are described in Table 2.

### Genotyping, Quality Control, and Imputation

Each participating cohort performed participant-level genotyping of SNPs that included standard quality-control measures for genotyping and imputation (Table S1).

#### Netherlands Twin Register

DNA extraction and purification of blood or buccal samples has been performed at various stages in time, according to manufacturer-specific protocols. Genotyping was done on multiple platforms, for several partly overlapping subsets (N = 1,771). Chronologically the following platforms have been used Affymetrix Perlegen 5.0 (2,481 individuals), Illumina 660 (739 individuals), Illumina Omni Express 1M (148 individuals), and Affymetrix 6.0 (3,744 individuals). After array-specific data analysis, genotype calls were made with the platform-specific software (APT Genotyper, Beadstudio, Birdseed). Quality control has been done within, as well as between, platforms and subsets. SNPs from each platform were removed if they had mismatching alleles

with the reference set, if the allele frequencies differed more than 0.20 with the reference set, if the MAF was < 1%, if the HWE p value was < 0.00001, or if the call rate was < 95%. Samples were excluded from the data if their expected sex did not match their genotyped sex, if the genotype missing rate was above 10%, or if the PLINK F inbreeding value was either > 0.10 or < -0.10. After these steps, the data of the individual chips were merged into a single dataset using PLINK 1.07.<sup>33</sup> Within the merged set, identity by state (IBS) sharing was calculated between all possible individual pairs and compared to the expected family structure of the NTR study. Samples were removed if the data did not match the expected IBS sharing. DNA samples that were typed on multiple platforms were filtered if the overlapping SNPs had a concordance rate below 99.0%. On the merged data, the HWE and MAF SNP filters were re-applied, as well as the reference allele frequency difference < 0.20 checks. As a final prior step to imputation, SNPs with C/G and A/T allele combinations were removed if the MAF was between 0.35 and 0.50 to avoid wrong strand alignment for these SNPs. Phasing of all samples and imputing cross-missing platform SNPs was done with MACH (1.0.16). The phased data were then imputed with Minimac (17072013) to the 1000 Genomes phase1 release v3 20101123 SNPs INDELS SVS ALL panel as a reference set. SNPs were removed if the Mendelian error rate was above 2%. Principal components (PCs) of genetic ancestry were inferred via EIGENSOFT.<sup>34</sup> The first three PCs were retained and used as covariates to correct for the Dutch population substructure<sup>35</sup> and sample specific covariates. Non-European ancestry samples were removed.

#### *QIMR Berghofer Medical Research Institute*

Genotyping was an expansion and re-imputation of the dataset used in Medland et al.<sup>36</sup> being a subset of the imputed version of an existing dataset of ~19,000 individuals (also used for example in Luong et al.,<sup>19</sup> Medland et al.,<sup>37</sup> and Wood et al.<sup>38</sup>). The ~19,000 were genotyped at different times in batches of 200 to 4,436 individuals on different Illumina genotyping chips variously at deCODE, CIDR, and the Diamantina Institute with genotyping mainly on 317K or 370K chips for the older cohort and 610K chips for the younger cohort and a minority of the older cohort. For individuals used here: the chips were 317K (342 individuals), 370K-duo (2,434 individuals), 370K-quad (1,453 individuals), 610K-quad (2,829 individuals), and 660K-quad (104 individuals). Data were QC'd batch-wise (drop any SNPs with MAF < 1%;  $p(\text{HWE}) < 10^{-6}$ ;  $\text{mean}(\text{GC}) < 0.7$ ; or call rate < 95%), integrated as a single family-based dataset, and checked for Mendelian errors. The ~280K SNPs passing QC in all batches were used as input to the imputation process that involved stand-alone phasing without reference panel of the ~280K SNPs using MACH v.1.0.16 or v.1.0.18 (depending on chromosome) followed by imputation by minimac (v.17072013) and the "all population" 1000 Genomes Phase 1 Release v.3 20101123 (filtered to exclude monomorphic SNPs). Individuals of obvious non-European ancestry were excluded (those more than 6 SD from the European centroid of PC1/PC2 from a principal-components analysis in EIGENSOFT<sup>34</sup> with axes constructed using HapMap and GenomeEUTWIN samples).

#### *Minnesota Center for Twin and Family Research*

The American samples were drawn from the longitudinal Minnesota Twin Family Study.<sup>32</sup> Participants were genotyped by Julie Cunningham's group at Mayo Clinic on Illumina's Human660W-Quad Array (Illumina) with Illumina GenomeStudio (v.1.5.16) software for genotype calling according to standard protocol. Of the 561,490 non-intensity SNP markers on the array, 527,829

(94.0%) were retained after eliminating markers that had (1) call rates < 99%, (2) minor allele frequency < 1%, (3) significant deviation from Hardy-Weinberg equilibrium at  $p < 10^{-7}$ , (4) more than two mendelian inconsistencies across families or more than one mismatch in duplicated samples, (5) an association with participant sex or batch at  $p < 10^{-7}$ , or (6) been identified by Illumina as a bad marker on the array. Samples were eliminated if they had (1) more than 5,000 non-calls, (2) low Gen\_Call scores, (3) extreme homozygosity or heterozygosity, or (4) failed to have familial relationships or sex confirmed, suggesting a sample mixup. European ancestry was confirmed by principal-component analysis using EIGENSTRAT as described by Miller et al.<sup>31</sup> and the phased European samples from 1000 Genomes, March 2012, were used as reference data. Prephasing and imputation were done by Jae Hoon Sul at UCLA using Beagle (v.3.3.2) for prephasing and minimac (v17072013) for imputation. This provided us with 10,011,985 imputed autosomal markers, including 9,170,060 markers with  $R_{sq} > 0.30$ .

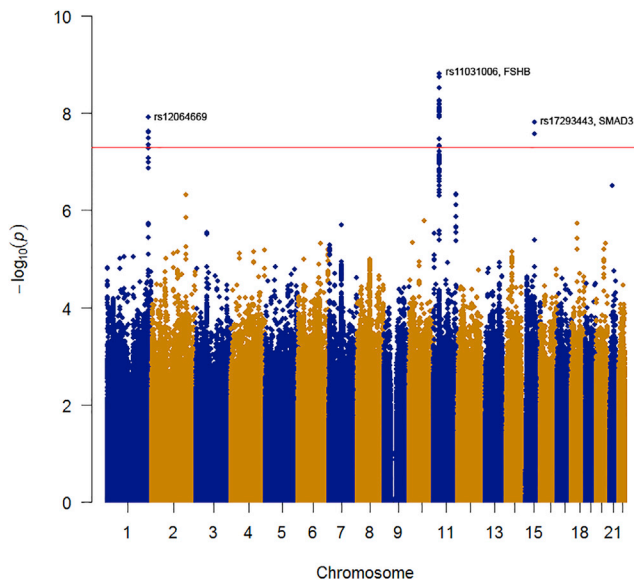
#### *Iceland*

Genotyping was performed with Illumina chips. Long-range phasing and imputation of variants from 2,636 sequenced Icelanders was carried out with in-house software using the IMPUTE model. Information about the genotypes of untyped individuals that could be inferred from the genotypes of close relatives was included as previously described.<sup>39</sup>

## Association Tests

Each genome-wide association analysis from the three cohorts was conducted using logistic regression under an additive genetic model with adjustment for principal components of genetic ancestry. Because the GWAS data include family members, we added the -family option in the analysis, which takes the familial structure of the data into account using a sandwich estimator.<sup>40</sup> Imputed SNPs were analyzed by PLINK software<sup>33</sup> and genotype imputation uncertainty was accounted for by using allelic dosage in PLINK.

Meta-analysis was performed using the fixed-effects inverse variance method based on the regression  $\beta$  estimates and standard errors from each study implemented in METAL.<sup>41</sup> The presence of heterogeneity between cohorts for the effect sizes of risk alleles was investigated using the Cochran's Q-test as implemented in METAL. To determine whether the genome-wide significant signal at each locus with low LD in the same chromosomal region (defined as  $r^2 < 0.05$  in a 750-kb region) could be accounted for by a single SNP, we carried out conditional analysis. Each cohort performed a genome-wide analysis for MODZT using logistic regression adjusting for the top signal at each of the three associated regions to determine whether potential second signals remained significant even after adjusting for these variants. Results from each individual study were meta-analyzed to determine whether these potential second signals were truly independent (that is, if  $p < 5 \times 10^{-8}$ ). In Iceland, being a mother of twins was tested for association with the top alleles using logistic regression and including age, age<sup>2</sup>, and county of birth as covariates as described previously.<sup>42</sup> Associations between FSH level and genotype were assessed by linear regression as described previously.<sup>42</sup> To study the association of fertility measures and SNP genotype, we used logistic regression (having children), Poisson log-linear regression (number of children), or linear regression (age at first child, age at last child, and average birth interval). In these analyses, birth cohort (as a factor for each 5-year interval), county



**Figure 1. Manhattan Plot for the Genome-wide Association Meta-analysis of Mothers of Dizygotic Twins**

SNPs are plotted on the x axis according to their position on each chromosome against the significance of the association on the y axis (shown as  $-\log_{10} p$  values). The solid red line denotes  $p = 5 \times 10^{-8}$  statistical significance. The rs numbers point to the chromosomal region that reached genome-wide significance level.

of birth, and six principal components were included as covariates. Relatedness was controlled for by using genomic control in all Icelandic association analyses.<sup>43</sup> The combined p value of the meta-analysis and the replication study was calculated by Fisher's combined probability test.<sup>44</sup>

### FSH Serum Level Measure

Serum levels of follicle-stimulating hormone (FSH) were measured in 2,411 men (1,275 genotyped persons; 1,136 close relatives of genotyped individuals) and 15,586 women (9,738 genotyped persons; 5,848 close relatives of genotyped individuals) referred to three clinics in Iceland. FSH testing was undertaken primarily to investigate possible gonad impairment. Hormone levels were measured by electrochemiluminescence immunoassay, using reagents and analytical instruments from Roche Diagnostics GmbH, according to the manufacturer's instructions.

### In Silico Functional Annotation

We used a number of publicly available bioinformatics tools and datasets to identify putative functional effects of the top associated SNPs at each locus, including combined annotation dependent depletion (CADD),<sup>45</sup> HaploReg v.4.1,<sup>46</sup> and variant effect predictor (VEP).<sup>47</sup>

### Gene-Based Test

Results of the MODZT meta-analysis were used to perform a gene-based test of association for the 63 candidate genes from Harris et al. using the knowledge-based mining system for genome-wide genetic studies (KGG) software v.3.5.<sup>48,49</sup> This approach uses an extended Simes test that integrates prior functional information and the meta-analysis association results when combining the SNP p values within a gene in order to obtain an overall association p value for each entire gene. As we tested for genetic asso-

ciation for 63 genes, the significance level was set at  $7.93 \times 10^{-4}$  (Bonferroni correction;  $0.05/63$ ).

### Polygenic Risk Scores

Polygenic risk scores were calculated based on the results of the MODZT meta-analysis. Only markers having  $\text{info} > 0.9$  in all groups and  $\text{MAF} > 0.01$  were included. To obtain effect sizes taking LD into account, the LDpred method developed by Vilhjálmsson and colleagues was used.<sup>50</sup> As suggested by Vilhjálmsson et al., we calculated multiple sets of LD-modified effect sizes based on a grid of values for the fraction of causal markers ( $\alpha = 0.0001, 0.0003, 0.001, 0.003, 0.01, 0.03, 0.1, 0.3, 1$ ). The resulting scores were then tested in a validation dataset of Icelandic mothers of dizygotic twins. The score producing the most significant result in the validation dataset was subsequently used to test for association with five fertility-related traits ("has children," "number of children," "age at first child," "age at last child," and "average birth interval").

## Results

### Genome-wide Association Results, Replication, and Gene-Based Analyses

We carried out a GWAS for DZ twinning in a discovery sample of 1,980 MODZT and 12,953 control subjects of European ancestry. Top SNPs were followed up in a replication sample consisting of 3,597 mothers of twins and 297,348 control subjects. In addition, we tested the association of the top SNPs with several measures of fertility (Table 2). The overall GWAS meta-analysis genomic control statistic ( $\lambda$ ) was 1.01, indicating no appreciable inflation due to population structure. The quantile-quantile (Q-Q) plot of genome-wide p values showed a strong deviation from the null hypothesis of no association (Figure S1). The results are represented in the Manhattan plot (Figure 1). Three chromosomal regions contained genome-wide significant SNPs ( $p < 5 \times 10^{-8}$ ). A total of 22 SNPs on chromosome 11p13 showed genome-wide significant associations. Of these, the strongest signal (rs11031006,  $p = 1.54 \times 10^{-9}$  and OR 1.41, 95% CI 1.29–1.53) lies in the region 5' of the transcription start site of *FSHB* (encoding the FSH, beta polypeptide [MIM: 136530]). A second locus was represented by five SNPs on *1q42.13* covering an intergenic region flanked by *PGBD5* (MIM: 616791) and *COG2* (MIM: 606974) ( $p = 1.23 \times 10^{-8}$ , OR 1.43, 95% CI 1.31–1.55 for strongest signal, rs12064669). A third locus on *15q22.33* mapped to the first intron of *SMAD3* (SMAD family member 3 [MIM: 603109]) (rs17293443,  $p = 1.57 \times 10^{-8}$  and OR 1.27, 95% CI 1.19–1.35) (Table 3 and Figure S2). No significant heterogeneity in SNP effects was observed across cohorts for the top SNPs ( $p > 0.1$ , Cochran's Q test, Table S2). The regional association plots for these loci are shown in Figure S2. After conditioning on the top SNPs at each locus, no secondary signals were observed (all  $p > 0.05$ ; Tables S3–S5). We sought validation of these three top signals in an independent replication study from Iceland (deCODE) totaling 3,597 mothers of twins and 297,348 control subjects. The *FSHB*

**Table 3. Genome-wide Significant Loci in the Meta-analysis of Mothers of Spontaneous DZ Twins and Replication versus Screened Control Subjects**

SNP	Locus	Position <sup>a</sup>	Gene	Annotation	Risk Allele	Meta-analysis			Replication			Combined
						RAF	OR (95%CI)	p	RAF	OR (95% CI)	p	p
rs11031006	11p14.1	30226528	FSHB	5' upstream	G	0.85	1.41 (1.29–1.53)	1.54 × 10 <sup>-9</sup>	0.85	1.14 (1.06–1.22)	3 × 10 <sup>-3</sup>	1.25 × 10 <sup>-10</sup>
rs17293443	15q22.33	67437863	SMAD3	intron	C	0.24	1.27 (1.19–1.35)	1.57 × 10 <sup>-8</sup>	0.21	1.15 (1.07–1.23)	1.44 × 10 <sup>-4</sup>	6.29 × 10 <sup>-11</sup>
rs12064669	1q42.13	230688643	–	intergenic	C	0.10	1.43 (1.31–1.55)	1.23 × 10 <sup>-8</sup>	0.07	1.01 (0.89–1.13)	0.88	2.09 × 10 <sup>-7</sup>

Sample sizes for mothers of spontaneous DZ twins and replication are n = 1,980 and n = 3,597, respectively. Abbreviations are as follows: RAF, risk allele frequency; OR, odd ratio; 95% CI, 95% confidence interval.

<sup>a</sup>SNP position according to NCBI Human Genome Build 37.

(rs11031006,  $p = 3 \times 10^{-3}$ , OR 1.14, 95% CI 1.06–1.22) and *SMAD3* (rs17293443,  $p = 1.44 \times 10^{-4}$ , OR 1.15, 95% CI 1.07–1.23) loci replicated, but rs12064669 ( $p = 0.88$ ) was not confirmed (Table 3 and Figure 2). We also investigated whether any of the proposed 63 candidate genes<sup>14</sup> was associated with human DZ twinning. In a gene-based test, five genes demonstrated a nominally significant association ( $p < 0.05$ ; *BMPRIA* [MIM: 601299], *BMPR1B* [MIM: 603248], *IGF1* [MIM: 147440], *FSHB*, and *FSHR* [MIM: 136435]). After correction for multiple testing, only *FSHB* remained significant (Table S6).

#### Functional In Silico Annotation of Associated Variants

We explored plausible functional effects of our associated variants via combined annotation dependent depletion (CADD).<sup>45</sup> The *FSHB* SNP rs11031006 had a high Phred scaled C-score (22.4), indicating that it is among the top 1% of SNPs in the human genome most likely to have a functional effect. The Phred score for the *SMAD3* SNP rs17293443 was only 2.71, indicating that it is among the bottom 50% of SNPs in the human genome likely to have a functional effect (Table S7). Examination of individual constituents of the CADD scores showed particularly high conservation-based scores for rs11031006 (Figure S3). To further investigate possible functional effects, we examined data from the ENCODE project.<sup>51</sup> The *FSHB* SNP rs11031006 alters the sequence of 11 protein-binding motifs including that of the estrogen receptor alpha, indicating a possible effect on hormonal feedback inhibition (Table S8). Variant effect predictor (VEP)<sup>47</sup> identified rs17293443 as a regulatory region variant within a promoter flanking region (ENSR00000410126) (Figure S4). SNP rs17293443 was contained in a *DNase I* hypersensitive site suggesting open chromatin, although it did not alter any of the transcription factor binding sites present in the promoter flanking region. Together, these data indicate that rs11031006 and rs17293443 might have direct functional roles.

#### SNPs Associated with FSH Serum Level

We analyzed serum FSH measurements from 17,997 genotyped Icelanders and their close relatives. SNP rs11031006 was significantly associated with higher serum FSH levels

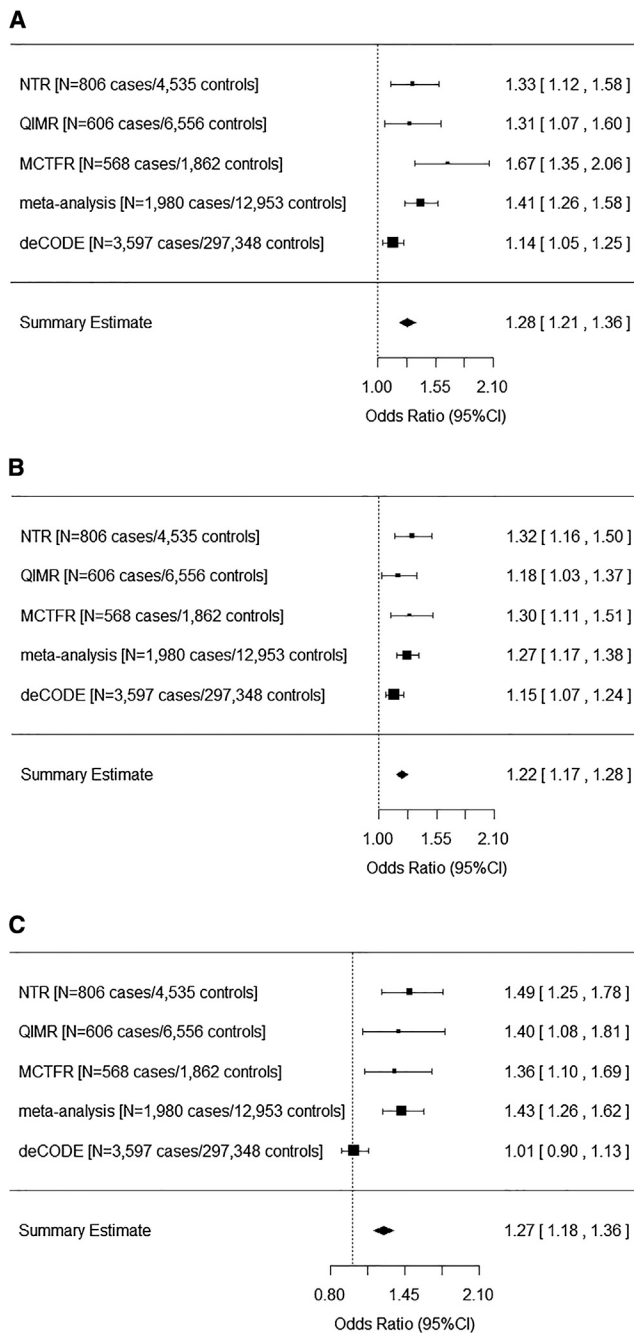
( $p = 2.3 \times 10^{-10}$ ), with each G allele conferring an increase in FSH level of about 0.11 SD units (Figure S5). Notably, the allele (rs11031006-G) conferring the strongest association with FSH levels in the FSH GWAS is the same allele that conferred the greatest chance of having DZ twins in our MODZT GWAS. No association was seen between the *SMAD3* signal and serum FSH levels ( $p = 0.30$ ).

#### Relative Risk of Twin Birth and Polygenic Risk Score Prediction of DZ Twinning and Fertility Measures

We estimated that the risk of a twin birth, based on approximately 90,000 births in Iceland between 1950 and 1991, was increased by 18% for each maternal rs11031006-G allele and by 9% for each rs17293443-C allele. A higher polygenic risk score (PRS) for DZ twinning, calculated based on the results of the DZ twinning GWAS, was significantly associated with DZ twinning in our independent Icelandic cohort ( $p = 0.001$ ) (Table S9). A higher PRS was also associated with a higher likelihood of having children ( $p = 0.01$ ), higher lifetime number of children ( $p = 0.03$ ), and an earlier age at first child ( $p = 0.02$ ) (Table S10). A re-calculated PRS, excluding the 1 Mb regions surrounding the two replicated variants, remained associated with DZ twinning ( $p = 0.02$ ) and with the likelihood of having children ( $p = 0.03$ ). These results reflect the polygenic contribution to the susceptibility to DZ twinning and its association with greater reproductive ability.

#### SNPs Associated with Female Reproduction Traits

Table 4 reports on the two loci robustly implicated in DZ twinning and other reproductive traits in women. Consistent with its effects on higher circulating FSH levels, the rs11031006-G allele is also associated with earlier age at menarche,<sup>22,52</sup> earlier age at first child, higher total lifetime number of children, lower risk of polycystic ovary syndrome (PCOS),<sup>23</sup> and earlier age at natural menopause.<sup>24,53</sup> Also, the DZ twinning SNP rs11031006 is correlated with a variant (rs10835638, *FSHB* c.211G>T) located in the promoter of *FSHB* ( $r^2 = 0.62$ ) that is associated with timing of breast development in girls.<sup>54</sup> In contrast, the rs17293443-C allele in *SMAD3* was associated only with a later age at last child (Figure S6).



**Figure 2. Forest Plots Depicting the Risk Allele Odds Ratio Estimates in the Discovery and the Replication Cohorts**  
 Black squares indicate the odds ratio (OR) and horizontal lines represent the 95% CIs. The combined results are indicated by the black diamond. rs11031006 (A), rs17293443 (B), rs12064669 (C). Abbreviations are as follows: NTR, Netherlands Twin Register; QIMR, QIMR Berghofer Medical Research Institute; MCTFR, Minnesota Center for Twin and Family Research; deCODE, Iceland.

## Discussion

Here we report compelling evidence that sequence variation at the *FSHB* and *SMAD3* loci increases the odds of DZ twinning in women. A number of studies in mothers of DZ twins, but not all,<sup>55</sup> have found higher FSH levels

responsible for multiple follicle growth.<sup>56</sup> The associations of *FSHB* rs11031006-G with earlier ages at breast development, menarche, menopause, and first child and higher lifetime parity indicates that this locus plays an important role in multiple reproductive aspects. Female carriers of rs11031006-G probably have a more advanced depletion of the ovarian follicular pool and hence would have an increased risk of premature ovarian failure (POF [MIM: 612964]). Indeed, advanced ovarian aging is a recognized feature of familial DZ twinning, with reported lower levels of anti-Mullerian hormone (AMH), a marker of lower ovarian primordial follicular reserve.<sup>57</sup> The rs17293443-C allele in *SMAD3* also increases chances of DZ twinning, but this effect appears independent of circulating FSH levels.

Of the 63 suggested candidate genes for twinning, only *FSHB* was associated in gene-based tests after correcting for multiple testing. Emerging data in human and non-human primates suggest that mechanisms underlying multiple ovulation might differ among species, explaining why in some species twinning is accompanied by unique evolutionary adaptations enabling offspring's survival, such as the marmoset diminutive fetal size in a simplex uterus and subsequent alloparenting.<sup>14</sup> Conversely, in humans, multiple gestations remain an independent risk factor for preterm birth, pregnancy loss, and fetal growth restriction. Thus loci common to species and strains with higher rates of DZ twinning will not necessarily be shared, as the rate, complications, and future reproductive fitness of those twin gestations differ.

The third genome-wide hit from the discovery was not replicated in Iceland. SNP rs120644669 is located 149 kb from the angiotensinogen (*AGT* [MIM: 106150]), which influences ovulatory capacity in mice,<sup>58</sup> and 89 kb from component of oligomeric golgi complex 2 (*COG2*) affecting protein glycosylation, which regulates the biological activity of the pituitary gonadotrophins.<sup>59</sup>

Genetic variants near *FSHB* (rs11031005 and rs11031002, which are highly correlated with rs11031006) are reportedly associated not only with higher serum FSH, but also with lower LH levels.<sup>60</sup> This agrees with the known response of the gonadotrophic cell to a high-frequency hypothalamic pulsatile GnRH signal that reciprocally controls secretion of both hormones.<sup>61</sup> Furthermore, under normal conditions, suppression of FSH in the early follicular phase and higher LH levels in late phase typically favor mono-ovulation in the human.<sup>62</sup> In a study aiming to identify genetic predictors for IVF success or IVF-controlled ovarian stimulation (COS), rs611246 located in *FSHB* ( $r^2 = 0.3$  with rs11031006) was reported significantly associated with measured early follicular phase FSH values and also with the probability of clinical pregnancy, suggesting that these genetic variants are potential predictor candidates that could be considered in clinical ovarian reserve and function assessment in assisted reproduction.<sup>63</sup>

A recent linkage study in cattle reported only one strong signal ( $p < 1 \times 10^{-28}$ ) for ovulation rate in a region

**Table 4. Association Results for the Implicated DZ Twinning SNPs in Fertility-Related Measures**

DZ Twinning and Fertility-Related Measure	rs11031006-G Allele (near <i>FSHB</i> )			rs17293443-C Allele (in <i>SMAD3</i> )		
	Effect	OR (95% CI)/Beta (95% CI)	p Value	Effect	OR (95% CI)/Beta (95% CI)	p Value
DZ twinning <sup>a</sup>	increase	1.41 (1.29, 1.53)	$1.54 \times 10^{-9}$	increase	1.27 (1.19, 1.35)	$1.57 \times 10^{-8}$
FSH levels (SD units) <sup>b</sup>	increase	0.11 (0.078, 0.15)	$2.3 \times 10^{-10}$	–	0.016 (–0.014, 0.045)	0.30
Age at menarche (years) <sup>c</sup>	earlier	–0.04 (–0.012, 0.011)	$8.5 \times 10^{-10}$	earlier	–0.001 (–0.127, 0.010)	0.84
Age at menopause (years) <sup>d</sup>	earlier	–0.2165 (–0.065, 0.052)	$8.5 \times 10^{-14}$	–	0.009 (–0.048, 0.049)	0.71
Has children (yes/no) <sup>e</sup>	–	1.07 (0.98, 1.17)	0.12	–	0.96 (0.89, 1.04)	0.34
Number of children <sup>e</sup>	increase	1.014 (1.00091, 1.27) <sup>f</sup>	0.03	–	1.0048 (0.99, 1.016) <sup>f</sup>	0.39
Age at first child (years) <sup>e</sup>	earlier	–0.20 (–0.31, –0.086)	$5.3 \times 10^{-4}$	–	0.032 (–0.065, 0.13)	0.51
Age at last child (years) <sup>e</sup>	earlier	–0.097 (–0.21, 0.015)	0.08	later	0.14 (0.043, 0.24)	$4.7 \times 10^{-3}$
Average birth interval (years) <sup>e</sup>	–	0.015 (–0.037, 0.067)	0.57	–	0.0051 (–0.040, 0.050)	0.82
PCOS <sup>g</sup>	decrease	0.90 (0.84, 0.95)	$2.9 \times 10^{-4}$	–	1.00 (0.96, 1.05)	0.78

<sup>a</sup>MODZT GWAS.<sup>b</sup>deCODE sample of 17,997 individuals with FSH levels.<sup>c</sup>Day et al.<sup>21</sup> and Perry et al.<sup>22</sup><sup>d</sup>Day et al.<sup>24</sup><sup>e</sup>deCODE sample of 41,946 women.<sup>f</sup>factor of increase from log-linear model.<sup>g</sup>Polycystic ovary syndrome, Day et al.<sup>23</sup>

spanning *SMAD3*, *SMAD6*, and *IQCH*.<sup>64</sup> *SMAD3* encodes one of a family of proteins that function as signal transducers and transcriptional modulators that mediate multiple signaling pathways. Observations in mice have established an essential role for *SMAD3* in mediating TGF- $\beta$  and activin signals in the ovarian granulosa cell and also in the pituitary<sup>65</sup> to maintain a favorable environment for oocyte maturation.<sup>66</sup> *SMAD3* is strongly expressed in the human ovary, where it promotes granulosa cell proliferation and steroidogenesis possibly by upregulating gonadotrophin receptor signaling pathways.<sup>67</sup> Thus, sequence variation in *SMAD3* might increase the chance of DZ twinning by increasing responsiveness to FSH. Understanding the role of *SMAD3* will offer novel opportunities to optimize responsiveness and minimize risk among assisted reproduction technology (ART) recipients, for example through adjustment of hormonal stimulation, and thus contribute to prevention of life-threatening ovarian hyper-stimulation syndrome in hyper-responding female carriers of the rs17293443-C allele and conversely prevention of a poor response in individuals with allelic variants that lead to a poor response.

The potential applications of this work in reproductive medicine are multifold. First, it reveals a well-defined set of loci for DZ twinning in the general population. Second, twinning is associated with common perinatal morbidities such as preterm birth, discordant twin growth, latter prenatal asymmetric intrauterine growth restriction, and placental abruption. Multiple gestations are also related to a higher prevalence of maternal morbidities such as preeclampsia, postpartum hemorrhage, and ensuing complications. By understanding the genetic basis of DZ twinning, we concomitantly identify loci conferring sus-

ceptibility (or conversely resistance) to these prevalent perinatal comorbidities. The involvement of *SMAD3* is of relevance in the light of a possible phenotype in male DZ twins, namely the repeatedly reported more frequent occurrence of testicular seminoma, a gonadal tumor in which the mitogenic cyclin D2 is overexpressed.<sup>68,69</sup> In animal experimental studies, knockout of *SMAD3* significantly attenuates cyclin D2 and tumor proliferation.<sup>70</sup> This indicates the likely clinical potential of *SMAD3* stretching beyond that of fertility physiology and treatment.

This study provides important insights into ovarian functioning and the control of natural multiple follicle growth and reproductive aging. This has important implications for fertility, including improved outcome prediction and novel avenues of fertility treatment. Other strengths include the rigorous phenotype inclusion of mothers of DZ twins with a documented history of spontaneous DZ twinning. It is worth mentioning that analyses done without excluding mothers who conceived DZ twins after hormone induction of multiple ovulation or other ART did not yield any genome-wide significant results (results not shown). We thus recommend twin registries to record these important data. We are aware of inherent limitations to our current study because our efforts focused only on unraveling the genetic basis of DZ twinning in European-ancestry populations. The highest incidence of DZ twins is reported in the Nigerian population and some other African countries, and future analysis will need to investigate the genetic underpinnings of DZ twinning from these regions. In contrast, DZ twinning is a rare trait in countries such as Japan and future studies should address what the reasons might be.<sup>2</sup>



In summary, we identified *FSHB* and *SMAD3* as maternal susceptibility loci for DZ twinning. These loci are also significantly and specifically associated with several other aspects of reproductive capacity and health.

### Supplemental Data

Supplemental Data include six figures, ten tables, and Supplemental Acknowledgments and can be found with this article online at <http://dx.doi.org/10.1016/j.ajhg.2016.03.008>.

### Acknowledgments

A list of support provided to individual studies appears in Supplemental Data. S.S., R.P.K., H.S., and K.S. are employees of deCODE Genetics/Amgen.

Received: January 11, 2016

Accepted: March 14, 2016

Published: April 28, 2016

### Web Resources

1000 Genomes, <http://browser.1000genomes.org>  
BEAGLE, <https://faculty.washington.edu/browning/beagle/b3.html>  
CADD, <http://cadd.gs.washington.edu/>  
ENCODE, <https://www.encodeproject.org/>  
HaploReg, <http://www.broadinstitute.org/mammals/haploreg/haploreg.php>  
Jackson Laboratory Manual, Breeding Strategies for Maintaining Colonies of Laboratory Mice, [http://ko.cwru.edu/info/breeding\\_strategies\\_manual.pdf](http://ko.cwru.edu/info/breeding_strategies_manual.pdf)  
KGG, <http://grass.cgs.hku.hk/limx/kgg/>  
LDpred, [https://bitbucket.org/bjarni\\_vilhjalmsson/ldpred](https://bitbucket.org/bjarni_vilhjalmsson/ldpred)  
LocusZoom, <http://csg.sph.umich.edu/locuszoom/>  
MACH, <http://www.sph.umich.edu/csg/abecasis/MACH/>  
Minimac, <http://genome.sph.umich.edu/wiki/Minimac>  
OMIM, <http://www.omim.org/>  
PLINK, <http://pngu.mgh.harvard.edu/~purcell/plink/>  
Variant Effect Predictor, [http://useast.ensembl.org/Homo\\_sapiens/Tools/VEP](http://useast.ensembl.org/Homo_sapiens/Tools/VEP)

### References

1. Bulmer, M.G. (1970). *The Biology of Twinning in Man* (Oxford: Clarendon).
2. Hall, J.G. (2003). Twinning. *Lancet* *362*, 735–743.
3. Hoekstra, C., Zhao, Z.Z., Lambalk, C.B., Willemsen, G., Martin, N.G., Boomsma, D.I., and Montgomery, G.W. (2008). Dizygotic twinning. *Hum. Reprod. Update* *14*, 37–47.
4. Smits, J., and Monden, C. (2011). Twinning across the developing world. *PLoS ONE* *6*, e25239.
5. Kulkarni, A.D., Jamieson, D.J., Jones, H.W., Jr., Kissin, D.M., Gallo, M.F., Macaluso, M., and Adashi, E.Y. (2013). Fertility treatments and multiple births in the United States. *N. Engl. J. Med.* *369*, 2218–2225.
6. Fauser, B.C., Devroey, P., and Macklon, N.S. (2005). Multiple birth resulting from ovarian stimulation for subfertility treatment. *Lancet* *365*, 1807–1816.
7. Chambers, G.M., Hoang, V.P., Lee, E., Hansen, M., Sullivan, E.A., Bower, C., and Chapman, M. (2014). Hospital costs of multiple-birth and singleton-birth children during the first 5 years of life and the role of assisted reproductive technology. *JAMA Pediatr.* *168*, 1045–1053.
8. van Heesch, M.M., Evers, J.L., van der Hoeven, M.A., Dumoulin, J.C., van Beijsterveldt, C.E., Bonsel, G.J., Dykgraaf, R.H., van Goudoever, J.B., Koopman-Esseboom, C., Nelen, W.L., et al. (2015). Hospital costs during the first 5 years of life for multiples compared with singletons born after IVF or ICSI. *Hum. Reprod.* *30*, 1481–1490.
9. Hoekstra, C., Willemsen, G., van Beijsterveldt, C.E., Lambalk, C.B., Montgomery, G.W., and Boomsma, D.I. (2010). Body composition, smoking, and spontaneous dizygotic twinning. *Fertil. Steril.* *93*, 885–893.
10. Eriksson, A.W., Bressers, W.M., Kostense, P.J., Pitkänen, K.J., Mielke, J.H., Jorde, L.B., Tas, R.F., and Fellman, J.O. (1988). Twinning rate in Scandinavia, Germany and The Netherlands during years of privation. *Acta Genet. Med. Gemellol. (Roma)* *37*, 277–297.
11. White, C., and Wyshak, G. (1964). Inheritance in human dizygotic twinning. *N. Engl. J. Med.* *271*, 1003–1005.
12. Moore, R.K., Erickson, G.F., and Shimasaki, S. (2004). Are BMP-15 and GDF-9 primary determinants of ovulation quota in mammals? *Trends Endocrinol. Metab.* *15*, 356–361.
13. Marmoset Genome Sequencing and Analysis Consortium (2014). The common marmoset genome provides insight into primate biology and evolution. *Nat. Genet.* *46*, 850–857.
14. Harris, R.A., Tardif, S.D., Vinar, T., Wildman, D.E., Rutherford, J.N., Rogers, J., Worley, K.C., and Aagaard, K.M. (2014). Evolutionary genetics and implications of small size and twinning in callitrichine primates. *Proc. Natl. Acad. Sci. USA* *111*, 1467–1472.
15. Lambalk, C.B. (2001). Is there a role for follicle-stimulating-hormone receptor in familial dizygotic twinning? *Lancet* *357*, 735–736.
16. Duffy, D., Montgomery, G., Treloar, S., Birley, A., Kirk, K., Boomsma, D., Beem, L., de Geus, E., Slagboom, E., Knighton, J., et al. (2001). IBD sharing around the PPARG locus is not increased in dizygotic twins or their mothers. *Nat. Genet.* *28*, 315.
17. Painter, J.N., Willemsen, G., Nyholt, D., Hoekstra, C., Duffy, D.L., Henders, A.K., Wallace, L., Healey, S., Cannon-Albright, L.A., Skolnick, M., et al. (2010). A genome wide linkage scan for dizygotic twinning in 525 families of mothers of dizygotic twins. *Hum. Reprod.* *25*, 1569–1580.
18. Palmer, J.S., Zhao, Z.Z., Hoekstra, C., Hayward, N.K., Webb, P.M., Whiteman, D.C., Martin, N.G., Boomsma, D.I., Duffy, D.L., and Montgomery, G.W. (2006). Novel variants in growth differentiation factor 9 in mothers of dizygotic twins. *J. Clin. Endocrinol. Metab.* *91*, 4713–4716.
19. Luong, H.T., Chaplin, J., McRae, A.F., Medland, S.E., Willemsen, G., Nyholt, D.R., Henders, A.K., Hoekstra, C., Duffy, D.L., Martin, N.G., et al. (2011). Variation in BMP1B, TGFRB1 and BMP2 and control of dizygotic twinning. *Twin Res. Hum. Genet.* *14*, 408–416.
20. Tong, S., Caddy, D., and Short, R.V. (1997). Use of dizygotic to monozygotic twinning ratio as a measure of fertility. *Lancet* *349*, 843–845.
21. Day, F.R., Bulik-Sullivan, B., Hinds, D.A., Finucane, H.K., Murabito, J.M., Tung, J.Y., Ong, K.K., and Perry, J.R. (2015). Shared genetic aetiology of puberty timing between sexes and with health-related outcomes. *Nat. Commun.* *6*, 8842.

22. Perry, J.R., Day, F., Elks, C.E., Sulem, P., Thompson, D.J., Ferreira, T., He, C., Chasman, D.I., Esko, T., Thorleifsson, G., et al.; Australian Ovarian Cancer Study; GENICA Network; kConFab; LifeLines Cohort Study; InterAct Consortium; Early Growth Genetics (EGG) Consortium (2014). Parent-of-origin-specific allelic associations among 106 genomic loci for age at menarche. *Nature* 514, 92–97.
23. Day, F.R., Hinds, D.A., Tung, J.Y., Stolk, L., Styrkarsdottir, U., Saxena, R., Bjornnes, A., Broer, L., Dunger, D.B., Halldorsson, B.V., et al. (2015). Causal mechanisms and balancing selection inferred from genetic associations with polycystic ovary syndrome. *Nat. Commun.* 6, 8464.
24. Day, F.R., Ruth, K.S., Thompson, D.J., Lunetta, K.L., Pervjakova, N., Chasman, D.I., Stolk, L., Finucane, H.K., Sulem, P., Bulik-Sullivan, B., et al.; PRACTICAL Consortium; kConFab Investigators; AOCs Investigators; Generation Scotland; EPIC-InterAct Consortium; LifeLines Cohort Study (2015). Large-scale genomic analyses link reproductive aging to hypothalamic signaling, breast cancer susceptibility and BRCA1-mediated DNA repair. *Nat. Genet.* 47, 1294–1303.
25. Boomsma, D.I., de Geus, E.J., Vink, J.M., Stubbe, J.H., Distel, M.A., Hottenga, J.J., Posthuma, D., van Beijsterveldt, T.C., Hudziak, J.J., Bartels, M., and Willemsen, G. (2006). Netherlands Twin Register: from twins to twin families. *Twin Res. Hum. Genet.* 9, 849–857.
26. Willemsen, G., de Geus, E.J., Bartels, M., van Beijsterveldt, C.E., Brooks, A.I., Estourgie-van Burk, G.F., Fugman, D.A., Hoekstra, C., Hottenga, J.J., Klufft, K., et al. (2010). The Netherlands Twin Register biobank: a resource for genetic epidemiological studies. *Twin Res. Hum. Genet.* 13, 231–245.
27. van Beijsterveldt, C.E., Groen-Blokhuis, M., Hottenga, J.J., Franić, S., Hudziak, J.J., Lamb, D., Huppertz, C., de Zeeuw, E., Nivard, M., Schutte, N., et al. (2013). The Young Netherlands Twin Register (YNTR): longitudinal twin and family studies in over 70,000 children. *Twin Res. Hum. Genet.* 16, 252–267.
28. Willemsen, G., Vink, J.M., Abdellaoui, A., den Braber, A., van Beek, J.H., Draisma, H.H., van Dongen, J., van 't Ent, D., Geels, L.M., van Lien, R., et al. (2013). The Adult Netherlands Twin Register: twenty-five years of survey and biological data collection. *Twin Res. Hum. Genet.* 16, 271–281.
29. Penninx, B.W., Beekman, A.T., Smit, J.H., Zitman, F.G., Nolen, W.A., Spinhoven, P., Cuijpers, P., De Jong, P.J., Van Marwijk, H.W., Assendelft, W.J., et al.; NESDA Research Consortium (2008). The Netherlands Study of Depression and Anxiety (NESDA): rationale, objectives and methods. *Int. J. Methods Psychiatr. Res.* 17, 121–140.
30. van Beijsterveldt, C.E., Hoekstra, C., Schats, R., Montgomery, G.W., Willemsen, G., and Boomsma, D.I. (2008). Mode of conception of twin pregnancies: willingness to reply to survey items and comparison of survey data to hospital records. *Twin Res. Hum. Genet.* 11, 349–351.
31. Miller, M.B., Basu, S., Cunningham, J., Eskin, E., Malone, S.M., Oetting, W.S., Schork, N., Sul, J.H., Iacono, W.G., and McGue, M. (2012). The Minnesota Center for Twin and Family Research genome-wide association study. *Twin Res. Hum. Genet.* 15, 767–774.
32. Iacono, W.G., Carlson, S.R., Taylor, J., Elkins, I.J., and McGue, M. (1999). Behavioral disinhibition and the development of substance-use disorders: findings from the Minnesota Twin Family Study. *Dev. Psychopathol.* 11, 869–900.
33. Purcell, S., Neale, B., Todd-Brown, K., Thomas, L., Ferreira, M.A., Bender, D., Maller, J., Sklar, P., de Bakker, P.I., Daly, M.J., and Sham, P.C. (2007). PLINK: a tool set for whole-genome association and population-based linkage analyses. *Am. J. Hum. Genet.* 81, 559–575.
34. Patterson, N., Price, A.L., and Reich, D. (2006). Population structure and eigenanalysis. *PLoS Genet.* 2, e190.
35. Abdellaoui, A., Hottenga, J.J., de Knijff, P., Nivard, M.G., Xiao, X., Scheet, P., Brooks, A., Ehli, E.A., Hu, Y., Davies, G.E., et al. (2013). Population structure, migration, and diversifying selection in the Netherlands. *Eur. J. Hum. Genet.* 21, 1277–1285.
36. Medland, S.E., Nyholt, D.R., Painter, J.N., McEvoy, B.P., McRae, A.F., Zhu, G., Gordon, S.D., Ferreira, M.A., Wright, M.J., Henders, A.K., et al. (2009). Common variants in the trichohyalin gene are associated with straight hair in Europeans. *Am. J. Hum. Genet.* 85, 750–755.
37. Medland, S.E., Duffy, D.L., Wright, M.J., Geffen, G.M., Hay, D.A., Levy, F., van-Beijsterveldt, C.E., Willemsen, G., Townsend, G.C., White, V., et al. (2009). Genetic influences on handedness: data from 25,732 Australian and Dutch twin families. *Neuropsychologia* 47, 330–337.
38. Wood, A.R., Esko, T., Yang, J., Vedantam, S., Pers, T.H., Gustafsson, S., Chu, A.Y., Estrada, K., Luan, J., Kutalik, Z., et al.; Electronic Medical Records and Genomics (eMEMERGE) Consortium; MIGen Consortium; PAGEGE Consortium; LifeLines Cohort Study (2014). Defining the role of common variation in the genomic and biological architecture of adult human height. *Nat. Genet.* 46, 1173–1186.
39. Styrkarsdottir, U., Thorleifsson, G., Sulem, P., Gudbjartsson, D.F., Sigurdsson, A., Jonasdottir, A., Jonasdottir, A., Oddsson, A., Helgason, A., Magnusson, O.T., et al. (2013). Nonsense mutation in the LGR4 gene is associated with several human diseases and other traits. *Nature* 497, 517–520.
40. Rogers, W.H. (1993). Regression standard errors in clustered samples. *Stata Tech. Bull.* 13, 19–23.
41. Willer, C.J., Li, Y., and Abecasis, G.R. (2010). METAL: fast and efficient meta-analysis of genomewide association scans. *Bioinformatics* 26, 2190–2191.
42. Gudbjartsson, D.F., Helgason, H., Gudjonsson, S.A., Zink, F., Oddsson, A., Gylfason, A., Besenbacher, S., Magnusson, G., Halldorsson, B.V., Hjartarson, E., et al. (2015). Large-scale whole-genome sequencing of the Icelandic population. *Nat. Genet.* 47, 435–444.
43. Devlin, B., and Roeder, K. (1999). Genomic control for association studies. *Biometrics* 55, 997–1004.
44. Fisher, R.A. (1925). *Statistical Methods for Research Workers* (Edinburgh, London: Oliver and Boyd).
45. Kircher, M., Witten, D.M., Jain, P., O’Roak, B.J., Cooper, G.M., and Shendure, J. (2014). A general framework for estimating the relative pathogenicity of human genetic variants. *Nat. Genet.* 46, 310–315.
46. Ward, L.D., and Kellis, M. (2012). HaploReg: a resource for exploring chromatin states, conservation, and regulatory motif alterations within sets of genetically linked variants. *Nucleic Acids Res.* 40, D930–D934.
47. McLaren, W., Pritchard, B., Rios, D., Chen, Y., Flicek, P., and Cunningham, F. (2010). Deriving the consequences of genomic variants with the Ensembl API and SNP Effect Predictor. *Bioinformatics* 26, 2069–2070.
48. Li, M.X., Kwan, J.S., and Sham, P.C. (2012). HYST: a hybrid set-based test for genome-wide association studies, with application to protein-protein interaction-based association analysis. *Am. J. Hum. Genet.* 91, 478–488.

49. Li, M.X., Gui, H.S., Kwan, J.S., and Sham, P.C. (2011). GATES: a rapid and powerful gene-based association test using extended Simes procedure. *Am. J. Hum. Genet.* **88**, 283–293.
50. Vilhjálmsson, B.J., Yang, J., Finucane, H.K., Gusev, A., Lindström, S., Ripke, S., Genovese, G., Loh, P.R., Bhatia, G., Do, R., et al.; Schizophrenia Working Group of the Psychiatric Genomics Consortium, Discovery, Biology, and Risk of Inherited Variants in Breast Cancer (DRIVE) study (2015). Modeling linkage disequilibrium increases accuracy of polygenic risk scores. *Am. J. Hum. Genet.* **97**, 576–592.
51. ENCODE Project Consortium (2012). An integrated encyclopedia of DNA elements in the human genome. *Nature* **489**, 57–74.
52. Lunetta, K.L., Day, F.R., Sulem, P., Ruth, K.S., Tung, J.Y., Hinds, D.A., Esko, T., Elks, C.E., Altmaier, E., He, C., et al.; EPIC-InterAct Consortium; Generation Scotland (2015). Rare coding variants and X-linked loci associated with age at menarche. *Nat. Commun.* **6**, 7756.
53. Stolk, L., Perry, J.R., Chasman, D.I., He, C., Mangino, M., Sulem, P., Barbalic, M., Broer, L., Byrne, E.M., Ernst, F., et al.; LifeLines Cohort Study (2012). Meta-analyses identify 13 loci associated with age at menopause and highlight DNA repair and immune pathways. *Nat. Genet.* **44**, 260–268.
54. Hagen, C.P., Sørensen, K., Aksglaede, L., Mouritsen, A., Mieritz, M.G., Tinggaard, J., Wohlfart-Veje, C., Petersen, J.H., Main, K.M., Rajpert-De Meyts, E., et al. (2014). Pubertal onset in girls is strongly influenced by genetic variation affecting FSH action. *Sci. Rep.* **4**, 6412.
55. Gilfillan, C.P., Robertson, D.M., Burger, H.G., Leoni, M.A., Hurley, V.A., and Martin, N.G. (1996). The control of ovulation in mothers of dizygotic twins. *J. Clin. Endocrinol. Metab.* **81**, 1557–1562.
56. Lambalk, C.B., Boomsma, D.I., De Boer, L., De Koning, C.H., Schoute, E., Popp-Snijders, C., and Schoemaker, J. (1998). Increased levels and pulsatility of follicle-stimulating hormone in mothers of hereditary dizygotic twins. *J. Clin. Endocrinol. Metab.* **83**, 481–486.
57. Van der Stroom, E.M., König, T.E., Vink, J.M., Boomsma, D.I., and Lambalk, C.B. (2013). Ovarian reserve and anti-Müllerian hormone (AMH) in mothers of dizygotic twins. *Twin Res. Hum. Genet.* **16**, 634–638.
58. Hefler, L.A., and Gregg, A.R. (2001). Influence of the angiotensinogen gene on the ovulatory capacity of mice. *Fertil. Steril.* **75**, 1206–1211.
59. Wide, L., and Eriksson, K. (2013). Dynamic changes in glycosylation and glycan composition of serum FSH and LH during natural ovarian stimulation. *Ups. J. Med. Sci.* **118**, 153–164.
60. Ruth, K.S., Campbell, P.J., Chew, S., Lim, E.M., Hadlow, N., Stuckey, B.G., Brown, S.J., Feenstra, B., Joseph, J., Surdulescu, G.L., et al. (2016). Genome-wide association study with 1000 genomes imputation identifies signals for nine sex hormone-related phenotypes. *Eur. J. Hum. Genet.* **24**, 284–290.
61. Magill, J.C., Ciccone, N.A., and Kaiser, U.B. (2013). A mathematical model of pulse-coded hormone signal responses in pituitary gonadotroph cells. *Math. Biosci.* **246**, 38–46.
62. Hillier, S.G. (2009). Paracrine support of ovarian stimulation. *Mol. Hum. Reprod.* **15**, 843–850.
63. Laisk-Podar, T., Kaart, T., Peters, M., and Salumets, A. (2015). Genetic variants associated with female reproductive ageing-potential markers for assessing ovarian function and ovarian stimulation outcome. *Reprod. Biomed. Online* **31**, 199–209.
64. Kirkpatrick, B.W., and Morris, C.A. (2015). A major gene for bovine ovulation rate. *PLoS ONE* **10**, e0129025.
65. Bernard, D.J. (2004). Both SMAD2 and SMAD3 mediate activin-stimulated expression of the follicle-stimulating hormone beta subunit in mouse gonadotrope cells. *Mol. Endocrinol.* **18**, 606–623.
66. Gong, X., and McGee, E.A. (2009). Smad3 is required for normal follicular follicle-stimulating hormone responsiveness in the mouse. *Biol. Reprod.* **81**, 730–738.
67. Liu, Y., Chen, X., Xue, X., Shen, C., Shi, C., Dong, J., Zhang, H., Liang, R., Li, S., and Xu, J. (2014). Effects of Smad3 on the proliferation and steroidogenesis in human ovarian luteinized granulosa cells. *IUBMB Life* **66**, 424–437.
68. Lambalk, C.B., and Boomsma, D.I. (1998). Twinning, cancer, and genetics. *Lancet* **351**, 909–910.
69. Swerdlow, A.J., De Stavola, B.L., Swanwick, M.A., and Maconochie, N.E. (1997). Risks of breast and testicular cancers in young adult twins in England and Wales: evidence on prenatal and genetic aetiology. *Lancet* **350**, 1723–1728.
70. Looyenga, B.D., and Hammer, G.D. (2007). Genetic removal of Smad3 from inhibin-null mice attenuates tumor progression by uncoupling extracellular mitogenic signals from the cell cycle machinery. *Mol. Endocrinol.* **21**, 2440–2457.