

Common variants underlying cognitive ability: further evidence for association between the SNAP-25 gene and cognition using a family-based study in two independent Dutch cohorts

M. F. Gosso^{*,†,‡,§}, E. J. C. de Geus^{†,§}, T. J. C. Polderman^{†,¶}, D. I. Boomsma^{†,‡,§}, P. Heutink^{†,‡,§} and D. Posthuma^{†,§}

[†]Department of Biological Psychology, Vrije Universiteit, Amsterdam, [‡]Department of Clinical Genetics, Section of Medical Genomics, VU Medical Center, Amsterdam, [§]Center for Neurogenomics and Cognitive Research – CNCR, Vrije Universiteit, Amsterdam, and [¶]Department of Child and Adolescent Psychiatry, Erasmus University, Rotterdam, the Netherlands

*Corresponding author: M. F. Gosso, Department of Biological Psychology, Vrije Universiteit, Van der Boerhorststraat 1, 1081 BT Amsterdam, the Netherlands. E-mail: mf.gosso@vumc.nl

The synaptosomal associated protein of 25 kDa (SNAP-25) gene, located on chromosome 20 p12-12p11.2 encodes a presynaptic terminal protein. SNAP-25 is differentially expressed in the brain, and primarily present in the neocortex, hippocampus, anterior thalamic nuclei, substantia nigra and cerebellar granular cells. Recently, a family-based genetic association was reported between variation in intelligence quotient (IQ) phenotypes and two intronic variants on the SNAP-25 gene. The present study is a follow-up association study in two Dutch cohorts of 371 children (mean age 12.4 years) and 391 adults (mean age 36.2 years). It examines the complete genomic region of the SNAP-25 gene to narrow down the location of causative genetic variant underlying the association. Two new variants in intron 1 (rs363043 and rs353016), close to the two previous reported variants (rs363039 and rs363050) showed association with variation in IQ phenotypes across both cohorts. All four single nucleotide polymorphisms were located in intron 1, within a region of about 13.8 kbp, and are known to affect transcription factor-binding sites. Contrary to what is expected in monogenic traits, subtle changes are postulated to influence the phenotypic outcome of complex (common) traits. As a result, functional polymorphisms in (non)coding regulatory sequences may affect spatial and temporal regulation of gene expression underlying normal cognitive variation.

Keywords: Family-based association, genetics, haplotype analysis, intelligence, (non)coding variants, synaptosomal

Received 2 August 2007, revised 23 August 2007, accepted for publication 24 August 2007

Cognitive ability is currently considered as a polygenic trait influenced by many genes of moderate to small effect that in turn may interact with each other and with environmental factors (Butcher *et al.* 2006; Plomin & Spinath 2004; Savitz *et al.* 2006). Identifying the actual genes underlying normal cognitive variation has proven to be a daunting task, mainly because of this polygenic nature. So far, successful identification of genes underlying genetic variation in human cognitive ability has been mainly limited to mutations for relatively rare neurological disorders with considerably severe cognitive effects in which mental retardation or milder forms of cognitive disability are part of a syndromic phenotype [i.e. fragile X syndrome (Verkerk *et al.* 1991), Apert syndrome (Ibrahimi *et al.* 2005), Rett syndrome (Neul & Zoghbi 2004)]. These mutations occur generally in key regulatory proteins within general neuronal signaling pathways.

Among diverse brain structures, the hippocampus is a critical part of the central nervous system associated with learning and memory processes (Squire & Kandel 1999). Hippocampal long-term potentiation (LTP) is thought to be a form of synaptic plasticity that underlies memory and learning (Bliss & Collingridge 1993; Martin *et al.* 2000; Morris 1989; Morris *et al.* 1986). The SNAP-25 gene product is a presynaptic plasma membrane protein, which is an integral component of the vesicle docking and fusion machinery that regulates neurotransmitter release (Horikawa *et al.* 1993; Oylar *et al.* 1989; Seagar & Takahashi 1998). The SNAP-25 gene is highly expressed by neurons in the hippocampus (Frassoni *et al.* 2005; Geddes *et al.* 1990; Oylar *et al.* 1989) and its expression has been significantly correlated with LTP formation (Hou *et al.* 2006). It is also implicated in axonal growth and synaptic plasticity (Osen-Sand *et al.* 1993). Current evidence suggests a major role of SNAP-25 in learning and memory in humans, based on pharmacological, animal (Grosse *et al.* 1999; Hou *et al.* 2004; Osen-Sand *et al.* 1993) and human studies (Greber-Platzer *et al.* 2003; Thompson *et al.* 2003).

We recently conducted a family-based association study using an indirect (*tagging*) approach that involved the SNAP-25 gene and psychometric intelligence scores as a measure of cognitive ability in humans (Gosso *et al.* 2006a). Psychometric intelligence tests consist of a number of component subtests that taken together are used to infer a general

intelligence quotient (IQ) score. Two single nucleotide polymorphisms (SNPs) in the *SNAP-25* gene showed a highly significant association with IQ. Both were (non)coding variants. Associations in a (non)coding region of *SNAP-25* can arise from variants in intronic and untranslated regions (UTR) that influence gene expression [e.g. variants located on promoter regions, transcription starting sites and 3' UTR microRNA target sites], which in turn might result in individual variation among IQ phenotypes.

The initial analyses (Gosso *et al.* 2006a) were based on a tagging approach. We here perform follow-up analyses to (1) narrow down the location of causative genetic variant underlying the association in intron 1 and (2) identify extra regions on *SNAP-25* gene not *tagged* during the previous analyses. Two independent extended cohorts of children (mean age 12.4 years) and adults (mean age 36.2 years) were used in order to identify these putative regulatory genomic variants underlying variation among IQ phenotypes.

Materials and methods

Subjects

All twins and their siblings were part of two larger cognitive studies and were recruited from the Netherlands Twin Registry (Boomsma 1998; Boomsma *et al.* 2006). Informed consent was obtained from the participants (adult cohort) or from their parents if they were under 18 years (young cohort). The current study was approved by the institutional review board of the VU University Medical Center. None of the individuals tested suffered from severe physical or mental handicaps, as assessed through standard questionnaire.

Young cohort

The young cohort consisted of 177 twin pairs born between 1990 and 1992, and 55 siblings (Polderman *et al.* 2006a,b), of which 371 were available for genotyping. The genotyped twins were 12.4 (SD = 0.9) years of age and the siblings were between 8 and 15 years old at the time of testing. There were 35 monozygotic male (MZM) twin pairs, 28 dizygotic male (DZM) twin pairs, 48 monozygotic female (MZFM) twin pairs, 23 dizygotic female (DZFM) twin pairs, 26 dizygotic opposite-sex (DOS) twin pairs, 24 male siblings and 24 female siblings and 3 subjects form incomplete twin pairs (1 male and 2 females). Participation in this study included a voluntary agreement to provide buccal swabs for DNA extraction.

This sample is similar to the sample used in our initial analyses, except for 20 individuals that were deleted from analyses in the current sample because of a more stringent threshold of genotyping failure per individual.

Adult cohort

A total of 793 family members from 317 extended twin families participated in the adult cognition study (Posthuma *et al.* 2005). Participation in this study did not automatically include DNA collection, however, part of the sample (276 subjects) returned to the lab to provide blood for DNA extraction or participated in NTR Biobank project (115 subjects) (Hoekstra *et al.* 2004). Mean age was 36.25 years (SD = 12.60). There were 25 MZM twin pairs, 15 DZM twin pairs, 1 DZM triplet, 20 MZF twin pairs, 28 DZF twin pairs and 23 DOS twin pairs, 29 female siblings and 28 male siblings and 109 subjects from incomplete twin pairs (41 males and 68 females).

Cognitive testing

In the young cohort, cognitive ability was assessed with the Dutch adaptation of the Wechsler Intelligence Scale for Children-Revised (Wechsler 1986), and consisted of four verbal subtests (similarities, vocabulary, arithmetic and digit span) and two performance subtests (block design and object assembly).

In the adult cohort, the Dutch adaptation of the Wechsler Adult Intelligence Scale III-Revised (Wechsler 1997), assessed IQ and consisted of four verbal subtests (information, similarities, vocabulary and arithmetic) and four performance subtests (picture completion, block design, matrix reasoning and digit-symbol substitution). In both cohorts, verbal IQ (VIQ), performance IQ (PIQ) and full-scale IQ (FSIQ) were normally distributed. Correlations between FSIQ/VIQ, FSIQ/PIQ and PIQ/VIQ were 0.89, 0.81 and 0.45, respectively, in the young cohort, and 0.90, 0.84 and 0.55, respectively, in the adult cohort. Mean and SD of the full and genotyped cohorts are provided in Table 1.

Longitudinal studies have shown that heritability estimates increase from around 30% in preschool children to 80% in early adolescent and adulthood (Bouchard & McGue 1981; Pettrill *et al.* 2004). Furthermore, the stability of IQ performance during childhood has been shown to be mainly influenced by genetic factors (Bartels *et al.* 2002; Plomin 1999) whose effects are amplified when children grow older. Heritability estimates for young and adult cohorts were reported elsewhere (Gosso *et al.* 2006b). Power for detecting relatively small quantitative trait loci (QTL) effects (1–3%) assuming a relatively high linkage disequilibrium (LD) between the genotyped marker and the causal variant are about 0.76 and 0.98, respectively.

DNA collection and genotyping

Buccal swabs were obtained from 371 children; DNA in adults was collected from blood samples (276 subjects) and buccal swabs (115 subjects). The DNA isolation from buccal swabs was performed using a chloroform/isopropanol extraction (Meulenbelt *et al.* 1995). DNA was extracted from blood samples using the salting out protocol (Miller *et al.* 1988). Zygosity was assessed using 11 polymorphic microsatellite markers (Heterozygosity > 0.80). Single nucleotide polymorphisms were selected based on their minor allele frequency (MAF) as obtained from a randomly selected population with northern

Table 1: Means and standard deviations of PIQ, VIQ and FSIQ in the young and adult cohorts

	Young cohort		Adult cohort	
	Total sample	Genotyped	Total sample	Genotyped
<i>n</i>	407	371	793	391
Gender (M/F)	191/216	176/195	348/445	175/216
Age (SD)	12.37 (0.93)	12.37 (0.92)	37.60 (13.00)	36.25 (12.64)
PIQ (SD)	94.57 (18.93)	94.85 (19.14)	104.49 (12.34)	104.30 (11.64)
VIQ (SD)	102.56 (12.74)	102.64 (12.92)	103.69 (12.26)	104.23 (12.15)
FIQ (SD)	98.65 (15.06)	98.84 (15.24)	103.56 (11.49)	103.81 (11.16)

and western European ancestry by the Centre d'Etude du polymorphisme Humain (CEPH) (<http://www.hapmap.org/thehapmap.html>). MAF had to be >0.10 in order to reach enough power to detect common variants and also be able to observe all three possible bi-allelic combinations. Forty-nine SNPs were selected using HAPLOVIEW v.3.32 (<http://www.broad.mit.edu/mpg/haploview/>) (NCBI BUILD 36.1) to be genotyped in both cohorts. Genotyping was performed blind to familial status and phenotypic data. Both MZ twins of a pair were included in genotyping and served as additional controls.

The SNPlex assay was conducted following the manufacturer's recommendations (Applied Biosystems, Foster City, CA, USA). All pre-polymerase chain reaction (PCR) steps were performed on a cooled block. Reactions were carried out in Gene Amp 9700 Thermocycler (Applied Biosystems). PCR products were analyzed with ABI3730 Sequencer (Applied Biosystems). Data were analyzed using GENEMAPPER v3.7 (Applied Biosystems).

Bioinformatics

Transcription factors (TFs) are proteins that recognize specific DNA sequences so-called transcription factor-binding sites (TFBS), their interaction is fundamental for regulation of gene expression [for review see (Garvie & Wolberger 2001)]. Physical TFBS are constitutive DNA sequences found every 10–15 bp throughout the genome, and weight matrices are usually used to accurately predict them (Cartharius *et al.* 2005). In order to identify gain or loss of physical TFBS, SNP variation was analyzed using MATINSPECTOR v. 7.4.8 and SNPINSPECTOR v. 6.3 [both programs are available via Genomatix browser (<http://www.genomatix.de.html>)]. While the former aids in the identification of physical TFBS, the latter identifies physical TFBS affected by SNPs (SNPs with putative regulatory activity). A random expectation value (the program assigns an expectation value for the number of TFBS matches per 1000 bp of random DNA sequence) is assigned to each TF, as well as a percentage of vertebrate promoters containing the TFBS.

Statistical analyses

Allele frequencies of selected SNPs were estimated in both young and adult cohorts using HAPLOVIEW v3.32 (<http://www.broad.mit.edu/mpg/haploview/>). Hardy–Weinberg equilibrium (HWE) P values were estimated for each variant, which is the probability that its deviation from HWE could be explained by chance. Only one member of a twin pair was selected for HWE calculations. Linkage disequilibrium parameter (r^2) was calculated from the haplotype frequencies estimates using HAPLOVIEW 3.32 (<http://www.broad.mit.edu/mpg/haploview/>). Haplotypes were estimated using SNPs that showed a significant association with IQ in both samples, using the expectation–maximization (EM) algorithm to obtain the maximum likelihood estimates of haplotype frequencies in each sample (Excoffier & Slatkin 1995), as implemented in the ALLEGRO software package v. 2 (Gudbjartsson *et al.* 2005). The EM algorithm allows for missing data and can be applied when no parental genotypes are available.

Genetic association tests were conducted using the program QTDT which implements the orthogonal association model proposed by Abecasis *et al.* (2000) (see also Fulker *et al.* 1999; extended by Posthuma *et al.* 2004). This model allows the decomposition of the genotypic association effect into orthogonal between-family (β_b) and within-family (β_w) components, can incorporate fixed effects of covariates and can also models the residual sib correlation as a function of polygenic or environmental factors. MZ twins can be included and are modeled as such, by adding zygosity status to the data file. They are not informative to the within-family association component (unless they are paired with non-twin siblings), but are informative for the between-family component. The between-family association component is sensitive to population admixture, whereas the within-family component is significant only in the presence of LD because of close linkage. Testing for the equality of the β_b and β_w effects, serves as a test of population stratification. If population stratification acts to create a false association, the test for association using the within-family component is still valid, and

provides a conservative test of association. If this test is not significant, the between- and within-family effects are equal and total association test that uses the whole population at once can be applied. It should be noted, however, that given the relatively modest sample size, both the within-family test and the population stratification test are not as powerful as the 'total' association test. When evaluating potentially interesting results from a number of statistical tests, it is necessary to determine how often a 'significant' P value would arise by chance if the study were repeated under the hypothesis of no genetic association. Bonferroni correction has proved to be too conservative especially when non-independent phenotypes are used in the context of association studies (e.g. IQ phenotypes), and as we tested multiple SNPs, a significance level of 0.01 was kept.

Results

Single SNP analysis

Genotyping of 7 of the 49 SNPs failed in both cohorts (rs1889188, rs2423487, rs363040, rs362548, rs11547873, rs11547859 and rs3025896). The LD structure for the remaining 42 SNPs is given in Table 2 for the young and adult cohort separately. Three of the remaining 42 SNPs were not in HWE in either cohorts. Further analyses will focus on the 39 variants that were in HWE. SNPs positions as well as LD values for the combined cohort are given in Fig. 1.

QTDT modeled additive allelic between- and within-family effects. Residual sib correlations were modeled as a function of polygenic additive effects and non-shared environmental effects. Tests for the presence of population stratification were all nonsignificant indicating that genotypic effects within families were not significantly different from those observed between families, suggesting that the more powerful total association test can be interpreted.

Four SNPs (rs363039, rs363043, rs363016 and rs363050) located in intron 1, showed significant association with IQ phenotypes. Significance was strongest in the young cohort ($P < 0.01$) and showed a trend in the same direction in the older cohort ($P < 0.10$) (see Tables 3 and 4). Analyses of the combined sample resulted in highly significant associations for these four SNPs. Two of these SNPs (rs363039 and rs363050) were previously associated with IQ variation in these same young and adult cohorts (Gosso *et al.* 2006a), whereas two new SNPs that were found significant, were added in the current follow-up analyses (rs363043 and rs363016). All four SNPs showed association in the same direction and the same order of magnitude. As can be observed from Table 3, rs363050 and rs363016 are in complete LD ($r^2 = .98$), and as expected, the similarity of association results reflects the high LD between them. The strongest association among this intron 1 region was observed between rs363016 and FSIQ ($\chi^2 = 15.99$, $P = 0.0001$). The increaser allele of this SNP was associated with an increase of 3.28 IQ points (see Table 4). Subsequently, further haplotype analysis was conducted with only three variants out of the four significantly associated SNPs (rs363039, rs363043 and rs363016) (see *Haplotype Analysis*).

A few other significant P values (i.e. ≤ 0.01) were observed that may suggest a second and new association peak located within a region of 4.9 kbp in the 3'UTR of SNAP-25. This involved two untranslated variants located only 658 bp apart

Table 2: SNP descriptives for young and adult cohorts

		SNP	Position*	Tagged SNP [†]	LD block [‡]	MA	MAF	HWE	Genotyping success rate
1	5'UTR	rs6077680	10100059			A	0.35/0.42	0.65/0.84	0.94/0.86
2		rs10485738	10100526			G	0.29/0.34	0.70/0.41	0.95/0.83
3		rs6133822	10107081			G	0.37/0.37	0.88/0.20	0.95/0.90
4		rs883381	10113727	3	Block 1 (6 kbp)	T	0.38/0.37	0.71/0.23	0.82/0.93
5		rs2225634	10126022			T	0.44/0.38	0.89/0.99	0.98/0.93
6		rs1889189	10145086	12, 13	Block 2 (19 kbp)	T	0.33/0.37	0.51/0.51	0.99/0.99
7	Intron 1	rs6032826	10151817			G	0.24/0.23	0.82/0.83	0.83/0.85
8		rs3787303	10156748			C	0.17/0.17	0.98/0.85	0.94/0.91
9		rs363011	10165336	10	Block 3 (13 kbp)	C	0.12/0.10	0.46/0.61	0.97/0.70
10		rs363032	10166644			C	0.06/0.07	0.27 [§] 0.00	0.98/0.93
11		rs363039	10168496			A	0.29/0.36	0.90/0.08	0.98/0.99
12		rs363043	10174146			T	0.31/0.25	0.91/0.89	0.93/0.93
13		rs363016	10179174			C	0.41/0.43	0.35/0.96	0.92/0.93
14		rs363050	10182257	12,13	Block 4 (8 kbp)	G	0.41/0.43	0.83/0.99	0.98/0.99
15		rs362567	10194091			A	0.13/0.11	0.07/0.97	0.97/0.96
16		rs362569	10194733			C	0.36/0.39	0.05/0.64	0.89/0.92
17	Intron 2	rs362585	10204252			T	0.07/0.10	0.30/0.30	0.92/0.94
18	Intron 3	rs6039806	10206654	17, 20, 24		A	0.47/0.47	0.06/0.95	0.93/0.89
19		rs6077718	10209142	28	Block 5 (31 kbp)	G	0.12/0.14	0.83/0.80	0.97/0.96
20		rs6039807	10211576			G	0.48/0.49	0.07/0.92	0.93/0.92
21	Intron 4	rs362592	10220492			A	0.08/0.08	0.98/0.08	0.94/0.90
22	Intron 5	rs362990	10224221			T	0.26/0.30	0.01/0.92	0.98/0.97
23		rs362993	10224716			T	0.07/0.06	0.58/0.05	0.91/0.92
24		rs362987	10225452			C	0.46/0.48	0.21/0.84	0.87/0.84
25	Exon 6	rs362998	10225621	17, 21		T	0.08/0.09	0.99/0.57	0.89/0.84
26	Intron 7	rs6108463	10228505			C	0.17/0.18	0.42/0.98	0.98/0.95
27		rs362988	10229370			A	0.49/0.41	0.20/0.60	0.94/0.88
28		rs4813925	10234313			A	0.30/0.43	0.46/0.49	0.85/0.87
29	Exon 8	rs8636	10235742	28	Block 6 (1 kbp)	T	0.34/0.41	0.78/0.71	0.97/0.99
30	3'UTR	rs6074121	10238703			C	0.31/0.27	0.80/0.99	0.98/0.93
31		rs362602	10241528			G	0.38/0.38	0.26/1.00	0.99/0.97
32		rs1984830	10242596			G	0.34/0.36	0.50/1.00	0.97/0.94
33		rs362552	10244217	30	Block 7 (12 kbp)	G	0.31/0.28	0.84/1.00	0.98/0.99
34		rs362554	10248961			T	0.05/0.07	0.73/0.93	0.93/0.93
35		rs725919	10251094			A	0.24/0.24	0.44/0.82	0.98/0.99
36		rs6108469	10252374			G	0.29/0.26	0.84/0.95	0.94/0.92
37		rs362614	10258449			T	0.23/0.22	0.84/0.99	0.89/0.87
38		rs362620	10262383			A	0.20/0.16	0.18/0.18	0.91/0.94
39		rs362557	10263041	40	Block 8 (0.7 kbp)	G	0.43/0.47	0.88 [§] 0.03	0.98/0.96
40		rs6104580	10267359			T	0.22/0.21	0.63/0.21	0.94/0.95
41		rs362560	10277347	40, 41	Block 9 (10 kbp)	C	0.33/0.31	0.62/0.85	0.98/0.93
42		rs765328	10281596			G	0.34/0.33	0.74/0.78	0.91/0.96

SNPs were selected if allele frequency was > 10% (18.0% heterozygosity) and a SNP pairwise correlation (ρ) < 0.85. SNPs already reported in our previous study (Gosso et al. 2006a) are in given in bold.

MA/MAF, minor allele/frequency.

*Chromosomal location in base pairs based on BUILD 36.1.

[†]SNP tagged with selection criteria.

[‡]LD block defined using the algorithm proposed by Gabriel et al., 2002, based in D'.

[§]SNPs not in HWE.

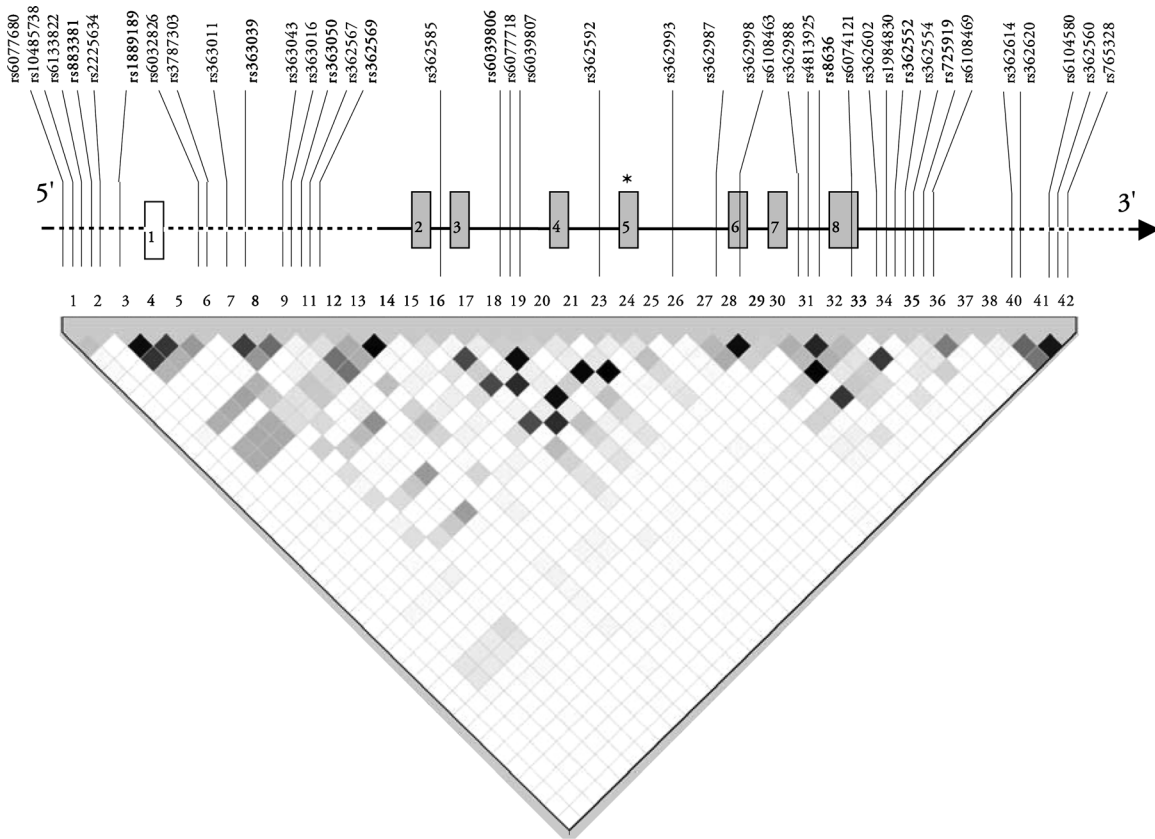


Figure 1: Location of the selected SNPs within the *SNAP-25* gene on chromosome 20 p12-p11.2. and their LD pattern (r^2). SNPs previously reported are given in bold. *Splicing site on exon 5.

(rs362620 and rs362557) in the young cohort. The A allele of rs362620 was associated with an increase of 1.29 VIQ points ($\chi^2 = 6.56$, $P = 0.01$), whereas the C allele of rs362557 was associated with an increase of 2.84 in VIQ ($\chi^2 = 7.02$, $P = 0.008$). LD patterns between these two SNP were extremely low ($r^2 = 0.18$). In addition, within the same region, association results for the adult cohort were observed with a neighbor variant (rs6104580) located 4.32 kbp away from the variants associated on the young cohort. In the old cohort, the T allele of rs6104580 was associated with an increase of 3.26 PIQ points ($\chi^2 = 8.36$, $P = 0.004$). LD between the rs6104580 and the two SNPs associated in the young cohort (rs362620 and rs362557) was relatively low (r^2 between 0.04 and 0.34) and variants rs363039, rs363043, and rs363016 were considered for subsequent haplotype analysis (see *Haplotype Analysis*).

Haplotype analysis

Based on LD patterns among the four (non)coding SNPs significantly associated with IQ phenotypes, only three were selected to conduct further haplotype analysis. The selected SNPs encompassed a genomic region of about 10.7 kbp (rs363039, and two variants within LD block 4, rs363043 and rs363016). LD (r^2) among these variants ranged between

0.10 and 0.54. These SNPs were used to estimate haplotypes within each sample. Haplotype analysis of SNPs with a relatively low LD is more powerful than single SNP analysis because the combination of SNPs into a haplotype can be considered as a multiallelic marker that is more informative than a biallelic marker when the causal variant(s) are not genotyped.

Five possible haplotypes were observed in our samples (A-C-C, A-T-T, G-C-C, G-C-T and G-T-T). Haplotypes A-T-C and G-T-C were not observed and A-C-T was only observed in the adult cohort at a very low frequency (see Table 5). Significant associations were found in both samples; however, it is worth noting that different allelic combinations were associated across cohorts. Within the young cohort, G-T-T was the strongest associated haplotype [PIQ $\chi^2(1) = 9.36$, $P = 0.002$], whereas G-C-T showed the strongest association among the adult cohort [FSIQ $\chi^2(1) = 10.08$, $P = 0.001$]. When the data were combined, highly significant associations were observed among all IQ phenotypes for both, G-T-T [PIQ $\chi^2(1) = 8.27$, $P = 0.004$] and G-C-T [VIQ $\chi^2(1) = 8.61$, $P = 0.003$] haplotypes (see Table 6), confirming the single SNP association results.

Haplotype analysis was also conducted for the rs362620 and rs362557 haplotype in the second region. Significant association was found between the A-C haplotype and VIQ

Table 3: Mean (SD) per genotype for PIQ, VIQ and FIQ for young and adult cohorts for the four tag-SNPs within the *SNAP-25* gene that show association with a significant association in intron 1

SNP position (bp)	Phenotype	Young cohort			Adult cohort			Total <i>n</i>
		Genotype frequency	Genotype frequency	Genotype frequency	Genotype frequency	Genotype frequency	Genotype frequency	
rs363039 (10168496)	FIQ (SD)	AA 0.09	AG 0.43	GG 0.48	AA 0.09	AG 0.51	GG 0.40	391
	VIQ (SD)	95.29 (14.35)	96.71 (14.63)	101.43 (15.55)	103.92 (11.13)	102.26 (10.85)	106.25 (11.29)	
	PIQ (SD)	98.37 (11.34)	101.16 (12.49)	104.88 (13.37)	104.22 (11.71)	103.04 (12.14)	106.23 (12.03)	
rs363043 (10174146)	FIQ (SD)	CC 0.50	CT 0.37	TT 0.13	CC 0.55	CT 0.37	TT 0.07	364
	VIQ (SD)	92.86 (16.66)	92.27 (19.54)	97.49 (18.92)	102.58 (11.33)	102.58 (11.33)	106.86 (11.65)	
	PIQ (SD)	92.86 (16.66)	92.27 (19.54)	97.49 (18.92)	102.58 (11.33)	102.58 (11.33)	106.86 (11.65)	
rs363016 (10179174)	FIQ (SD)	CC 0.15	CT 0.51	TT 0.34	CC 0.17	CT 0.51	TT 0.32	362
	VIQ (SD)	96.66 (15.64)	99.38 (14.20)	105.17 (14.32)	102.65 (10.93)	104.68 (11.85)	108.92 (12.74)	
	PIQ (SD)	101.25 (12.83)	104.03 (12.76)	105.32 (12.34)	103.05 (12.07)	104.61 (11.93)	108.90 (13.73)	
rs363050 (10182257)	FIQ (SD)	CC 0.34	CT 0.50	TT 0.16	CC 0.32	CT 0.50	TT 0.18	391
	VIQ (SD)	92.24 (19.01)	94.31 (18.60)	103.80 (17.46)	103.41 (10.96)	105.69 (13.30)	107.86 (11.90)	
	PIQ (SD)	92.24 (19.01)	94.31 (18.60)	103.80 (17.46)	103.41 (10.96)	105.69 (13.30)	107.86 (11.90)	
rs363039 (10168496)	FIQ (SD)	AA 0.09	AG 0.43	GG 0.48	AA 0.09	AG 0.51	GG 0.40	391
	VIQ (SD)	95.29 (14.35)	96.71 (14.63)	101.43 (15.55)	103.92 (11.13)	102.26 (10.85)	106.25 (11.29)	
	PIQ (SD)	98.37 (11.34)	101.16 (12.49)	104.88 (13.37)	104.22 (11.71)	103.04 (12.14)	106.23 (12.03)	
rs363043 (10174146)	FIQ (SD)	CC 0.50	CT 0.37	TT 0.13	CC 0.55	CT 0.37	TT 0.07	364
	VIQ (SD)	92.86 (16.66)	92.27 (19.54)	97.49 (18.92)	102.58 (11.33)	102.58 (11.33)	106.86 (11.65)	
	PIQ (SD)	92.86 (16.66)	92.27 (19.54)	97.49 (18.92)	102.58 (11.33)	102.58 (11.33)	106.86 (11.65)	
rs363016 (10179174)	FIQ (SD)	CC 0.15	CT 0.51	TT 0.34	CC 0.17	CT 0.51	TT 0.32	362
	VIQ (SD)	96.66 (15.64)	99.38 (14.20)	105.17 (14.32)	102.65 (10.93)	104.68 (11.85)	108.92 (12.74)	
	PIQ (SD)	101.25 (12.83)	104.03 (12.76)	105.32 (12.34)	103.05 (12.07)	104.61 (11.93)	108.90 (13.73)	
rs363050 (10182257)	FIQ (SD)	CC 0.34	CT 0.50	TT 0.16	CC 0.32	CT 0.50	TT 0.18	391
	VIQ (SD)	92.24 (19.01)	94.31 (18.60)	103.80 (17.46)	103.41 (10.96)	105.69 (13.30)	107.86 (11.90)	
	PIQ (SD)	92.24 (19.01)	94.31 (18.60)	103.80 (17.46)	103.41 (10.96)	105.69 (13.30)	107.86 (11.90)	

Table 4: Family-based association analysis for *SNAP-25* tag-SNPs for young, adult and combined cohorts

SNP position (bp)	Phenotype	Young cohort				Adult cohort				Combined cohort			
		<i>n</i>	χ^2	<i>P</i>	Genotypic effect	<i>n</i>	χ^2	<i>P</i>	Genotypic effect	<i>n</i>	χ^2	<i>P</i>	Genotypic effect
rs363039 (10168496)	Mean FIQ	362	6.43	0.011	3.61 (G)	391	5.56	0.018	2.12 (G)	753	11.79	0.0006	2.75 (G)
	Mean VIQ	363	5.64	0.018	2.97 (G)	391	2.83	0.093	1.70 (G)	754	7.47	0.0063	2.13 (G)
	Mean PIQ	362	4.63	0.031	3.79 (G)	391	7.05	0.008	2.45 (G)	753	11.53	0.0007	3.21 (G)
rs363043 (10174146)	Mean FIQ	346	7.48	0.006	3.61 (T)	364	4.24	0.039	2.12 (T)	710	11.25	0.0008	2.75 (T)
	Mean VIQ	347	3.58	0.058	2.20 (T)	364	3.14	0.076	2.07 (T)	711	6.57	0.0104	2.01 (T)
	Mean PIQ	346	7.46	0.006	4.54 (T)	364	2.73	0.098	1.75 (T)	710	9.86	0.0017	3.06 (T)
rs363016 (10179174)	Mean FIQ	340	8.71	0.003	4.07 (T)	362	7.42	0.006	2.57 (T)	702	15.99	0.0001	3.28 (T)
	Mean VIQ	341	7.02	0.008	3.10 (T)	362	6.08	0.014	2.43 (T)	703	13.01	0.0003	2.76 (T)
	Mean PIQ	340	6.08	0.014	4.16 (T)	362	5.30	0.021	2.21 (T)	702	11.22	0.0008	3.21 (T)
rs363050 (10182257)	Mean FIQ	363	5.97	0.015	3.16 (A)	391	5.57	0.018	2.01 (G)	754	11.36	0.0008	2.49 (A)
	Mean VIQ	364	7.49	0.006	3.10 (A)	391	4.08	0.043	1.94 (G)	755	11.11	0.0009	2.38 (A)
	Mean PIQ	363	2.59	0.108	2.65 (A)	391	4.71	0.030	1.86 (G)	754	7.18	0.0074	2.29 (A)

The genotypic effect is the increase in IQ points associated with the increaser allele. $P < 0.01$ are in bold. Residual variance was modeled as a function of polygenic effects and non-shared environmental effects.

$[\chi^2(1) = 6.09, P = 0.01]$ with an increase of 2.65 IQ points, corroborating the single SNP analysis in the young cohort. This association should be interpreted with more than the usual caution because the single SNP analyses had not shown replication between cohorts or within cohort across different IQ phenotypes.

Bioinformatics

A search with MATINSPECTOR and SNPIINSPECTOR showed that all three SNPs affected TFBS (see Table 6). Although there is no hard evidence that these TFBS are functional, it at least allows for the possibility that the (non)coding variants identified could affect regulatory gene expression.

Table 5: Family-based association analysis for *tagging* haplotypes (rs363039, rs363043 and rs363016) in intron 1 of the *SNAP-25* gene for young, adult and combined cohorts

Haplotype (young/adult)	Phenotype	Young cohort (<i>n</i> = 328)			Adult cohort (<i>n</i> = 325)			Combined cohort (<i>n</i> = 653)		
		χ^2	<i>P</i>	Genotypic effect	χ^2	<i>P</i>	Genotypic effect	χ^2	<i>P</i>	Genotypic effect
A-C-C (0.30/0.31)	FIQ	3.89	0.049	-3.46	4.74	0.029	-9.64	6.88	0.009	-4.07
	VIQ	6.54	0.011	-3.75	4.97	0.026	-8.53	10.20	0.001	-4.13
	PIQ	0.87	0.351	-2.08	2.90	0.089	-9.65	1.96	0.162	-2.65
A-C-T (NA/0.02)	FIQ	NA	NA	NA	2.98	0.084	-3.61	2.18	0.140	1.51
	VIQ	NA	NA	NA	2.40	0.121	-4.52	1.57	0.210	0.66
	PIQ	NA	NA	NA	1.99	0.158	0.00	1.77	0.183	2.65
A-T-T (0.03/0.01)	FIQ	0.24	0.624	1.20	2.83	0.093	-3.61	0.76	0.383	-1.36
	VIQ	1.14	0.286	2.33	2.12	0.145	-2.58	0.06	0.806	-0.39
	PIQ	0.04	0.841	-0.76	2.30	0.129	-3.98	1.63	0.202	-2.65
G-C-C (0.13/0.11)	FIQ	2.38	0.123	-2.64	0.92	0.337	-2.71	3.26	0.071	-2.41
	VIQ	0.61	0.435	-1.16	1.04	0.308	-2.45	1.76	0.185	-1.55
	PIQ	3.47	0.062	-3.98	0.29	0.590	-1.89	2.91	0.088	-2.84
G-C-T (0.28/0.29)	FIQ	0.54	0.462	1.05	10.08	0.001	4.37	7.33	0.007	2.71
	VIQ	2.34	0.126	1.94	7.26	0.007	3.23	8.61	0.003	2.58
	PIQ	0.01	0.920	0.18	7.79	0.005	4.92	4.04	0.044	2.65
G-T-T (0.26/0.26)	FIQ	6.97	0.008	3.76	0.94	0.332	1.36	6.57	0.010	2.56
	VIQ	1.94	0.164	1.68	0.74	0.390	0.78	2.39	0.122	1.29
	PIQ	9.36	0.002	5.49	1.00	0.317	1.70	8.27	0.004	3.60

Table 6: List of putative TFBS modified by common SNPs within intron 1 on the *SNAP-25* gene

SNP position (bp)	Change	Gain/loss	Vertebrate matrix	Position (Build 36.1)	Strand	Name	Random expectation (matches per 1000 bp)	Promoter matches (% of vertebrate promoters)
rs363039 (10168496)	G→A	Lost	V\$P53F/P53.02	10168485–10168507	–	Tumor suppressor p53	4.06	14.4
	G→A	Lost	V\$ZNF/SZF1.01	10168493–10168517	+	SZF1, hematopoietic progenitor-restricted KRAB-zinc finger protein	0.17	13.1
rs363043 (10174146)	C→T	New	V\$COMP/COMP1.01	10174136–10174158	+	COMP1, cooperates with myogenic proteins in multicomponent complex	0.02	31.7
	C→T	New	V\$EV11/EV11.04	10174146–10174162	–	Ecotropic viral integration site 1 encoded factor, amino-terminal zinc finger domain	0.01	23.2
rs363016 (10179174)	C→T	Lost	V\$HOXC/PBX1.01	10174139–10174155	–	Homeodomain factor Pbx-1	0.05	21.8
	C→T	New	V\$HOXF/HOXB9.01	10179168–10179184	+	Abd-B-like homeodomain protein Hoxb-9	1.41	33.0
	C→T	New	V\$TBPF/ATATA.01	10179167–10179183	–	Avian C-type LTR TATA box	0.04	41.2

SZF1, Krüppel-like zinc finger proteins; KRAB, Krüppel-associated box; COMP1, Myogenic factor 4; Pbx1, pre B-cell leukemia transcription factor 1; Hoxb-9, homeobox B9; LTR TATA, long terminal repeat TATA.

Discussion

To continue our investigation of the possible role of the *SNAP-25* gene in intelligence, we employed a family-based genetic association test in two independent cohorts of 371 children (mean age 12.42 years), and 391 adults (mean age 36.25 years). The selected SNPs gave a dense coverage of the first intron of *SNAP-25*, which was previously reported to be associated with intelligence (Gosso *et al.* 2006a). Single and haplotype analysis was conducted in the present study in order to (1) narrow down the location of causative genetic variant underlying the association in intron 1 and (2) identify extra regions on *SNAP-25* gene not *tagged* during the previous analyses. Four SNPs (rs363039, rs363043, rs363016 and rs363050) located in intron 1, showed significant association with IQ phenotypes. Haplotype analysis confirmed the single association results. Combined data across age cohorts showed highly significant associations among IQ phenotypes for both *G-T-T* [PIQ $\chi^2(1) = 8.27$, $P = 0.004$] and *G-C-T* [VIQ $\chi^2(1) = 8.61$, $P = 0.003$] haplotypes. Interestingly, two haplotypes were independently found associated to IQ phenotypes among young and adult cohorts. Within the young cohort, *G-T-T* was the strongest associated haplotype [PIQ $\chi^2(1) = 9.36$, $P = 0.002$], whereas *G-C-T* showed the strongest association among the adult cohort [FSIQ $\chi^2(1) = 10.08$, $P = 0.001$]. Variance in these haplotypes accounts for 1% and 3% of the phenotypic variance in PIQ and FIQ, respectively.

Such differential genotypic effects might be possibly explained within a heterogeneous genomic context. Although physical TFBS are a constitutive portion of the genome, the cellular and genomic context will determine whether a given TF sequence(s) become functional or not. Transcription factors are differentially expressed in response to developmental requirements, and even more important, like QTL, single TF will not be sufficient to trigger a regulatory response, but they will rather interact in a collaborative manner. For example, low levels of TF p53 are constitutively expressed in the developing nervous system (embryonic and neonatal) under normal growth conditions and this is down-regulated in adults (Komarova *et al.* 1997). Nevertheless, role of p53 in differentiation rather than apoptosis during sensory neuronal development still has to be determined.

Likely, IQ can be considered a truly polygenic complex trait, and as such, not a single common allelic variant might be involved in IQ phenotype variation, but rather, similar genetic effects might be exerted by diverse allelic variants. Alternatively, our results could indicate that the causal variant is older than the SNPs that have been tested and in fact is present on both haplotypes. It is worth noting that rare alleles may still contribute importantly to variation in cognitive ability, albeit their small effects can be only identified within a multicenter collaborative study framework, mainly because of the relative large amount of samples required to achieve power to detect their genetic effects.

The *SNAP-25* gene, located on chromosome 20 p12-12p11.2 encodes a presynaptic terminal protein. *SNAP-25* is thought to be differentially expressed in the brain and is primarily present in the neocortex, hippocampus, anterior thalamic nuclei, substantia nigra and cerebellar granular cells.

In the mature brain, expression is mainly seen at presynaptic terminals (Oyler *et al.* 1989). Two splicing variant of the *SNAP-25* exist, *SNAP-25a* and *SNAP-25b* isoforms (Bark & Wilson 1991). During development, *SNAP-25a* isoform is involved in synaptogenesis, forming presynaptic sites and neuritic outgrowth (Osen-Sand *et al.* 1993; Oyler *et al.* 1989), whereas in the mature brain, the *SNAP-2b* isoform forms a complex with syntaxin and the synaptic vesicle proteins (synaptobrevin and synaptotagmin) that mediates exocytosis of neurotransmitter from the synaptic vesicle into the synaptic cleft (see Bark & Wilson 1994; Horikawa *et al.* 1993; Low *et al.* 1999; Seagar & Takahashi 1998).

SNAP-25 isoforms (*SNAP-25a* and *SNAP-25b*) are fundamental for keeping a balanced trade-off between synaptic formation and neurotransmitter vesicle release; however, evolutionary (comparative genomics) analysis of the coding sequence showed no selection in favor of any of the gene-coding variants on *SNAP-25*. If variation of coding variants may not *per se* be associated to phenotypic variation, then, the next possible scenario might be the presence of regulatory effects exerted by variants on (non)coding regions. Regulatory (non)coding variants may interact in a concerted manner rather than in isolation, with the capacity to regulate gene expression. Genetic (non)coding variants present within intron 1 might be involved in regulation of protein isoforms expression. All associated SNPs were involved in TFBS changes (gain/loss of TFBS). Furthermore, because functional TFBS are predicted to interact in a co-operative manner rather than in isolation, a global overview might be required to (1) identify known and unknown TFBS and (2) putative functional (non)coding polymorphisms that may affect spatial and temporal regulation of gene expression.

Contrary to what is expected in Mendelian traits, subtle changes are postulated to influence the phenotypic outcome of complex (common) traits. Further functional studies may aid in identification of functional polymorphisms that may affect functional TFBS, which in turn may be used to uncover genetic regulatory interactions underlying normal cognitive variation.

References

- Abecasis, G.R., Cardon, L.R. & Cookson, W.O. (2000) A general test of association for quantitative traits in nuclear families. *Am J Hum Genet* **66**, 279–292.
- Bark, C. & Wilson, M.C. (1991) Alternative splicing generates a variant *SNAP-25* protein during development. *Abstr Soc Neurosci* **17**, 531.
- Bark, I.C. & Wilson, M.C. (1994) Human cDNA clones encoding two different isoforms of the nerve terminal protein *SNAP-25*. *Gene* **139**, 291–292.
- Bartels, M., Rietveld, M., Van Baal, G.C.M. & Boomsma, D.I. (2002) Genetic and environmental influences on the development of intelligence. *Behav Genet* **32**, 237–249.
- Bliss, T.V. & Collingridge, G.L. (1993) A synaptic model of memory: long-term potentiation in the hippocampus. *Nature* **361**, 31–39.
- Boomsma, D.I. (1998) Twin registers in Europe: an overview. *Twin Res* **1**, 34–51.
- Boomsma, D.I., de Geus, E.J., Vink, J.M., Stubbe, J.H., Distel, M.A., Hottenga, J.J., Posthuma, D., van Beijsterveldt, T.C., Hudziak, J.J., Bartels, M. & Willemsen, G. (2006) Netherlands Twin Register: from twins to twin families. *Twin Res Hum Genet* **9**, 849–857.
- Bouchard, T.J. Jr. & McGue, M. (1981) Familial studies of intelligence: a review. *Science* **212**, 1055–1059.
- Butcher, L.M., Kennedy, J.K. & Plomin, R. (2006) Generalist genes and cognitive neuroscience. *Curr Opin Neurobiol* **16**, 145–151.
- Cartharius, K., Frech, K., Grote, K., Lockke, B., Haltmeier, M., Klingenhoff, A., Frisch, M., Bayerlein, M. & Werner, T. (2005) MatInspector and beyond: promoter analysis based on transcription factor binding sites. *Bioinformatics* **21**, 2933–2942.
- Excoffier, L. & Slatkin, M. (1995) Maximum-likelihood estimation of molecular haplotype frequencies in a diploid population. *Mol Biol Evol* **12**, 921–927.
- Frasconi, C., Inverardi, F., Coco, S., Ortino, B., Grumelli, C., Pozzi, D., Verderio, C. & Matteoli, M. (2005) Analysis of *SNAP-25* immunoreactivity in hippocampal inhibitory neurons during development in culture and in situ. *Neuroscience* **131**, 813.
- Fulker, D.W., Cherny, S.S., Sham, P.C. & Hewitt, J.K. (1999) Combined linkage and association sib-pair analysis for quantitative traits. *Am J Hum Genet* **64**, 259–267.
- Gabriel, S.B., Schaffner, S.F., Nguyen, H., Moore, J.M., Roy, J., Blumenstiel, B., Higgins, J., DeFelice, M., Lochner, A., Faggart, M., Liu-Cordero, S.N., Rotimi, C., Adeyemo, A., Cooper, R., Ward, R., Lander, E.S., Daly, M.J. & Altshuler, D. (2002) The structure of haplotype blocks in the human genome. *Science* **296**, 2225–2229.
- Garvie, C.W. & Wolberger, C. (2001) Recognition of specific DNA sequences. *Mol Cell* **8**, 937–946.
- Geddes, J.W., Hess, E.J., Hart, R.A., Kesslak, J.P., Cotman, C.W. & Wilson, M.C. (1990) Lesions of hippocampal circuitry define synaptosomal-associated protein-25 (*SNAP-25*) as a novel presynaptic marker. *Neuroscience* **38**, 515–525.
- Gosso, M.F., de Geus, E.J., van Belzen, M.J., Polderman, T.J., Heutink, P., Boomsma, D.I. & Posthuma, D. (2006a) The *SNAP-25* gene is associated with cognitive ability: evidence from a family-based study in two independent Dutch cohorts. *Mol Psychiatry* **11**, 878–886.
- Gosso, M.F., van Belzen, M., de Geus, E.J., Polderman, J.C., Heutink, P., Boomsma, D.I. & Posthuma, D. (2006b) Association between the *CHRM2* gene and intelligence in a sample of 304 Dutch families. *Genes Brain Behav* **5**, 577–584.
- Greber-Platzer, S., Fleischmann, C., Nussbaumer, C., Cairns, N. & Lubec, G. (2003) Increased RNA levels of the 25kDa synaptosomal associated protein in brain samples of adult patients with Down Syndrome. *Neurosci Lett* **336**, 77–80.
- Grosse, G., Grosse, J., Tapp, R., Kuchinke, J., Gorsleben, M., Fetter, I., Hohne-Zell, B., Gratzl, M. & Bergmann, M. (1999) *SNAP-25* requirement for dendritic growth of hippocampal neurons. *J Neurosci Res* **56**, 539–546.
- Gudbjartsson, D.F., Thorvaldsson, T., Kong, A., Gunnarsson, G. & Ingólfsson, A. (2005) Allegro version 2. *Nat Genet* **37**, 1015–1016.
- Hoekstra, C., Meijer, P., Kluff, C., Heutink, P., Smit, G., de Geus, E., Smit, J.H., van Bruggen, A., Montgomery, G.W. & Boomsma, D.I. (2004) Genetics of dizygotic twinning: a feasibility study for a biobank. *Twin Res* **7**, 556–563.
- Horikawa, H.P., Saisu, H., Ishizuka, T., Sekine, Y., Tsugita, A., Odani, S. & Abe, T. (1993) A complex of *rab3A*, *SNAP-25*, *VAMP/synaptobrevin-2* and syntaxins in brain presynaptic terminals. *FEBS Lett* **330**, 236–240.
- Hou, Q., Gao, X., Zhang, X., Kong, L., Wang, X., Bian, W., Tu, Y., Jin, M., Zhao, G., Li, B., Jing, N. & Yu, L. (2004) *SNAP-25* in hippocampal CA1 region is involved in memory consolidation. *Eur J Neurosci* **20**, 1593–1603.
- Hou, Q.L., Gao, X., Lu, Q., Zhang, X.H., Tu, Y.Y., Jin, M.L., Zhao, G.P., Yu, L., Jing, N.H. & Li, B.M. (2006) *SNAP-25* in hippocampal CA3 region is required for long-term memory formation. *Biochem Biophys Res Commun* **347**, 955–962.
- Ibrahimi, O.A., Chiu, E.S., McCarthy, J.G. & Mohammadi, M. (2005) Understanding the molecular basis of Apert syndrome. *Plast Reconstr Surg* **115**, 264–270.
- Komarova, E.A., Chernov, M.V., Franks, R., Wang, K., Armin, G., Zelnick, C.R., Chin, D.M., Bacus, S.S., Stark, G.R. & Gudkov, A.V. (1997) Transgenic mice with p53-responsive lacZ: p53 activity varies dramatically during normal development and determines radiation and drug sensitivity in vivo. *EMBO J* **16**, 1391–1400.
- Low, P., Norlin, T., Risinger, C., Larhammar, D., Pieribone, V.A., Shupliakov, O. & Brodin, L. (1999) Inhibition of neurotransmitter release in the lamprey reticulospinal synapse by antibody-mediated disruption of *SNAP-25* function. *Eur J Cell Biol* **78**, 787–793.

- Martin, S.J., Grimwood, P.D. & Morris, R.G. (2000) Synaptic plasticity and memory: an evaluation of the hypothesis. *Annu Rev Neurosci* **23**, 649–711.
- Meulenbelt, I., Droog, S., Trommelen, G.J., Boomsma, D.I. & Slagboom, P.E. (1995) High-yield noninvasive human genomic DNA isolation method for genetic studies in geographically dispersed families and populations. *Am J Hum Genet* **57**, 1252–1254.
- Miller, S.A., Dykes, D.D. & Polesky, H.F. (1988) A simple salting out procedure for extracting DNA from human nucleated cells. *Nucleic Acids Res* **16**, 1215.
- Morris, R.G. (1989) Synaptic plasticity and learning: selective impairment of learning rats and blockade of long-term potentiation in vivo by the N-methyl-D-aspartate receptor antagonist AP5. *J Neurosci* **9**, 3040–3057.
- Morris, R.G., Anderson, E., Lynch, G.S. & Baudry, M. (1986) Selective impairment of learning and blockade of long-term potentiation by an N-methyl-D-aspartate receptor antagonist, AP5. *Nature* **319**, 774–776.
- Neul, J.L. & Zoghbi, H.Y. (2004) Rett syndrome: a prototypical neurodevelopmental disorder. *Neuroscientist* **10**, 118–128.
- Osen-Sand, A., Catsicas, M., Staple, J.K., Jones, K.A., Ayala, G., Knowles, J., Grenningloh, G. & Catsicas, S. (1993) Inhibition of axonal growth by SNAP-25 antisense oligonucleotides in vitro and in vivo. *Nature* **364**, 445–448.
- Oyler, G.A., Higgins, G.A., Hart, R.A., Battenberg, E., Billingsley, M., Bloom, F.E. & Wilson, M.C. (1989) The identification of a novel synaptosomal-associated protein, SNAP-25, differentially expressed by neuronal subpopulations. *J Cell Biol* **109**, 3039–3052.
- Petrill, S.A., Lipton, P.A., Hewitt, J.K., Plomin, R., Cherny, S.S., Corley, R. & DeFries, J.C. (2004) Genetic and environmental contributions to general cognitive ability through the first 16 years of life. *Dev Psychol* **40**, 805–812.
- Plomin, R. (1999) Genetics and general cognitive ability. *Nature* **402**, C25–C29.
- Plomin, R. & Spinath, F.M. (2004) Intelligence: genetics, genes, and genomics. *J Pers Soc Psychol* **86**, 112–129.
- Polderman, T.J.C., Gosso, M.F., Posthuma, D., Van Beijsterveldt, T.C., Heutink, P., Verhulst, F.C. & Boomsma, D.I. (2006a) A longitudinal twin study on IQ, executive functioning, and attention problems during childhood and early adolescence. *Acta Neurol Belg* **106**, 191–207.
- Polderman, T.J.C., Stins, J.F., Posthuma, D., Gosso, M.F., Verhulst, F.C. & Boomsma, D.I. (2006b) The phenotypic and genotypic relation between working memory speed and capacity. *Intelligence* **34**, 549–560.
- Posthuma, D., de Geus, E.J., Boomsma, D.I. & Neale, M.C. (2004) Combined linkage and association tests in MX. *Behav Genet* **34**, 179–196.
- Posthuma, D., Luciano, M., Geus, E.J., Wright, M.J., Slagboom, P.E., Montgomery, G.W., Boomsma, D.I. & Martin, N.G. (2005) A genomewide scan for intelligence identifies quantitative trait loci on 2q and 6p. *Am J Hum Genet* **77**, 318–326.
- Savitz, J., Solms, M. & Ramesar, R. (2006) The molecular genetics of cognition: dopamine, COMT and BDNF. *Gene Brain Behav* **5**, 311–328.
- Seagar, M. & Takahashi, M. (1998) Interactions between pre-synaptic calcium channels and proteins implicated in synaptic vesicle trafficking and exocytosis. *J Bioenerg Biomembr* **30**, 347–356.
- Squire, L.R. & Kandel, E.R. (1999) *Memory: From Mind to Molecules*, Scientific American Library, New York, NY.
- Thompson, P.M., Egbufoama, S. & Vawter, M.P. (2003) SNAP-25 reduction in the hippocampus of patients with schizophrenia. *Prog Neuropsychopharmacol Biol Psychiatry* **27**, 411–417.
- Verkerk, A.J., Pieretti, M., Sutcliffe, J.S. et al. (1991) Identification of a gene (FMR-1) containing a CGG repeat coincident with a breakpoint cluster region exhibiting length variation in fragile X syndrome. *Cell* **65**, 905–914.
- Wechsler, D. (1986) *Wechsler Intelligence Scale for Children-Revised (WISC-R)*. Swets & Zeitlinger, Lisse.
- Wechsler, D. (1997) *WAIS-III Wechsler Adult Intelligence Scale*. Psychological Corporation, San Antonio, TX.

Acknowledgments

This study was supported by the Universitair Stimulerings Fonds (grant number 96/22), the Human Frontiers of Science Program (grant number rg0154/1998-B), the Netherlands Organization for Scientific Research (NWO) grants 904-57-94 and NWO/SPI 56-464-14192. This study was supported by the Centre for Medical Systems Biology (CMSB), a centre of excellence approved by the Netherlands Genomics Initiative/Netherlands Organization for Scientific Research (NWO). We thank Saskia van Mil and David Sondervan from the Medical Genomics Laboratory for technical support. We also like to thank the families from the Netherland Twin Registry (NTR) who participate in this study.