



WL PLASTICS
An INEOS Business

Potable Water Piping



Water applications

The ideal piping solution

Potable Water Piping

Product background

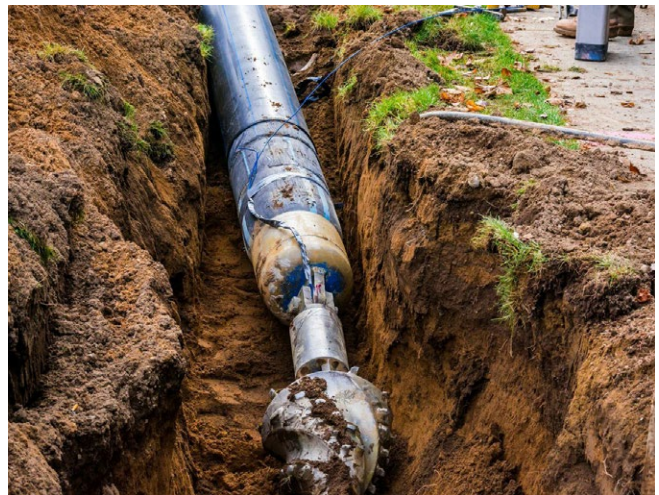
- Used in potable water applications since the 1960s
- HDPE pipe is the fastest growing material used for transporting drinking water and in trenchless rehabilitation of infrastructure
- Excellent taste and odor
- Life cycle cost benefits
- Leak-free joints and lower energy requirements for manufacturing, transporting and installation make HDPE pipe the green choice

Product options

- 3/4" to 54" diameters with pressure up to 335
- Color stripes (blue) available
- IPS and DIPS and CTS sizes
- NSF-61
- FM capabilities

Product features

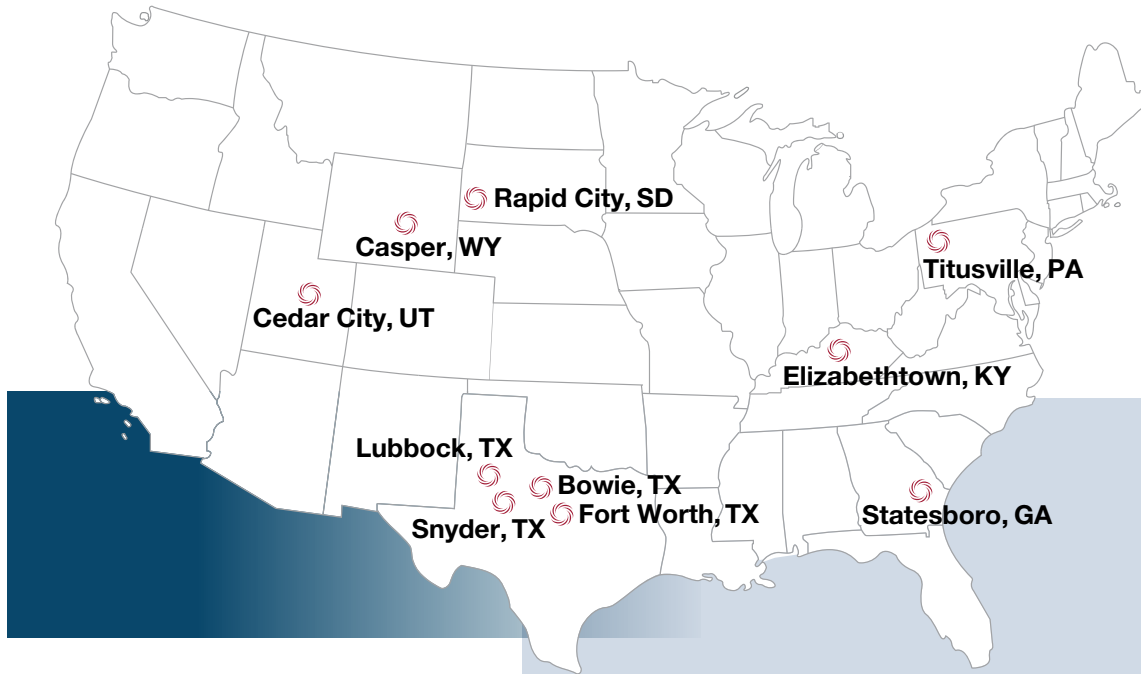
- Lightweight, leakproof and chemical resistant
- No damaging effects from freezing and thawing
- Superior flow characteristics maintains optimum flow rates which reduce pumping costs
- Exceptional surge tolerance, which means safe operation at higher flows and velocities
- No thrust blocks and no loss of treated water
- Heat-fused joints reduce installation time
- Manufactured to strict industry standards: AWWA, ASTM, NSF
- Meets AWWA standards C-906, C-901 and NSF standard 61 for drinking water





WL PLASTICS

An INEOS Business



Manufacturing locations

- Bowie, TX
- Casper, WY
- Cedar City, UT
- Elizabethtown, KY
- Lubbock, TX (HDPE)
- Lubbock, TX (MDPE)
- Rapid City, SD
- Snyder, TX
- Statesboro, GA
- Titusville, PA (HDPE/MDPE)

Corporate office

3575 Lone Star Circle, Suite 300,
Fort Worth, TX, 76177

Contact

Contact WL Plastics for more information

SALES: wlsales@wlplastics.com

TECHNICAL: wltechnical@wlplastics.com

This publication is intended for use as a piping system guide. It should not be used in place of a professional engineer's judgment or advice and it is not intended as installation instructions. The information in this publication does not constitute a guarantee or warranty for piping installations and cannot be guaranteed because the conditions of use are beyond our control. The user of this information assumes all risk associated with its use. WL Plastics Corporation has made every reasonable effort to ensure accuracy, but the information in this publication may not be complete, especially for special or unusual applications. Changes to this publication may occur from time to time without notice. Contact WL Plastics Corporation to determine if you have the most current edition. Publication duplication permitted.

