



WL PLASTICS
An INEOS Business

Mining Applications



Industrial, FM, Mining

The ideal piping solution

Mining Applications

Product background

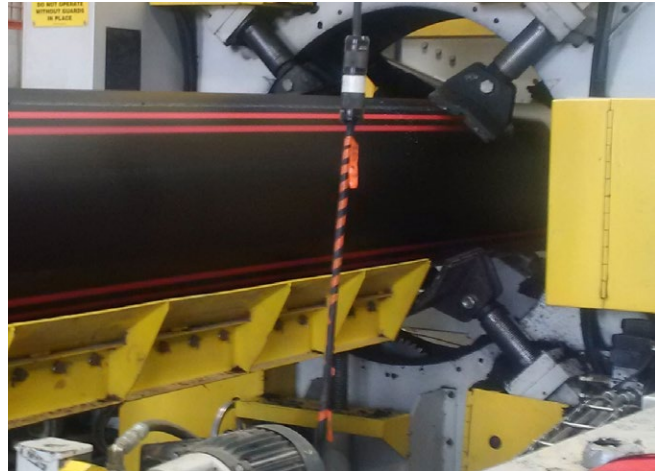
- Water management
- Conveying or drainage pipe
- River water diversion
- Sewer and sub-drainage systems
- Slurry and leachate lines

Product options

- 3/4" to 54" size availability
- IPS and DIPS available
- Thick wall capable for slurry
- FM 2" to 36" size available
- Stripes (including dual)

Product features

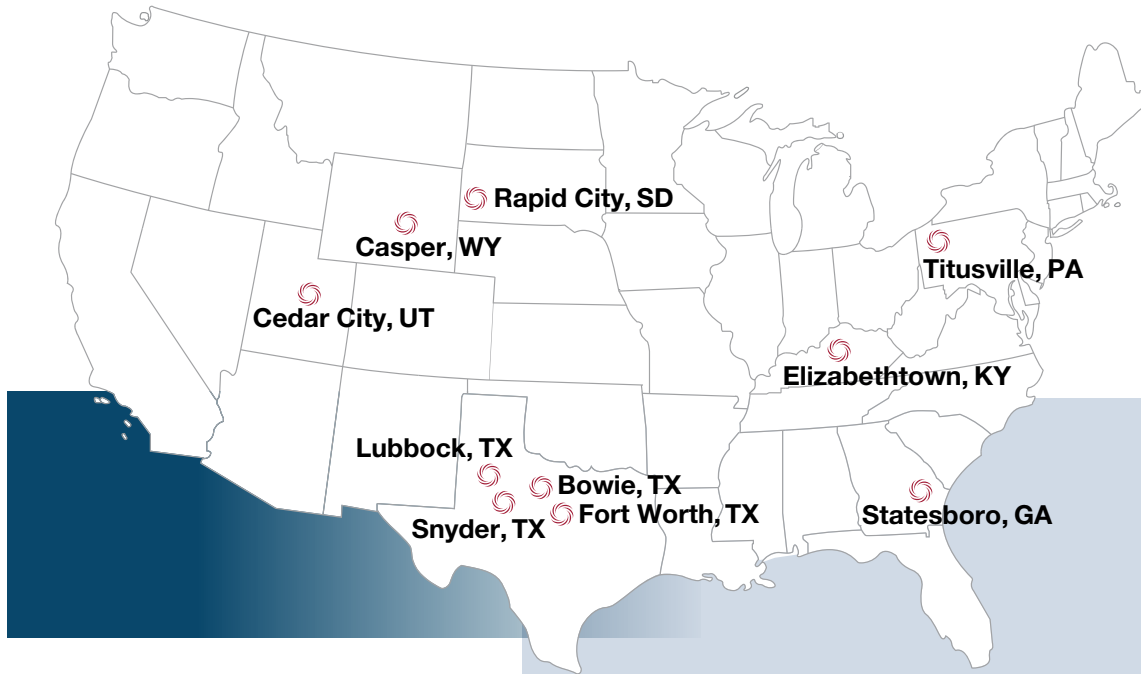
- Exceptional chemical and abrasion resistance for aggressive materials (such as acids or salts)
- Leak-free joints joined using heat fusion on site
- Tolerance for variable operating conditions
- Exceptional toughness
- Long-term performance in demanding conditions
- Low installation and maintenance costs
- Lightweight and flexible
- Superior design life





WL PLASTICS

An INEOS Business



Manufacturing locations

- Bowie, TX
- Casper, WY
- Cedar City, UT
- Elizabethtown, KY
- Lubbock, TX (HDPE)
- Lubbock, TX (MDPE)
- Rapid City, SD
- Snyder, TX
- Statesboro, GA
- Titusville, PA (HDPE/MDPE)

Corporate office

3575 Lone Star Circle, Suite 300,
Fort Worth, TX, 76177

Contact

Contact WL Plastics for more information

SALES: wlsales@wlplastics.com

TECHNICAL: wltechnical@wlplastics.com

This publication is intended for use as a piping system guide. It should not be used in place of a professional engineer's judgment or advice and it is not intended as installation instructions. The information in this publication does not constitute a guarantee or warranty for piping installations and cannot be guaranteed because the conditions of use are beyond our control. The user of this information assumes all risk associated with its use. WL Plastics Corporation has made every reasonable effort to ensure accuracy, but the information in this publication may not be complete, especially for special or unusual applications. Changes to this publication may occur from time to time without notice. Contact WL Plastics Corporation to determine if you have the most current edition. Publication duplication permitted.

