



**WL PLASTICS**  
An INEOS Business

# WL140 Polyethylene Pipe Capabilities



Multi-application use

The ideal piping solution

# WL140 Polyethylene Pipe Capabilities

## Who we are – HDPE manufacturer

### **The ideal producer of polyethylene pipe in North America.**

WL Plastics is the largest manufacturer of quality solid wall polyethylene pipe products in North America offering both High Density Polyethylene (HDPE) and Medium Density Polyethylene (MDPE) pipe solutions.

In early 2000, Mark Wason and Steve Burns, two longtime industry managers, founded WL Plastics to serve the oil and gas gathering, municipal water, sewer, mining, and industrial pipe demand in the Rocky Mountain region. They quickly grew WL Plastics into a strong regional provider of PE pipe in the Rockies.

Following three strong years of growth, they constructed a second plant in Cedar City, Utah. WL Plastics rapidly expanded through acquisitions and new greenfield plants. In 2016, WL Plastics was acquired by INEOS, a global chemical company which has provided financial backing and vertical supply integration to support continued growth and service to our customers.

Most recently, WL Plastics acquired the business and manufacturing assets of Charter Plastics in Titusville, Pennsylvania. This has allowed WL Plastics to expand its geographical footprint and diversify its product offerings. With the addition of the Titusville plant, WL Plastics now operates nine state-of-the-art manufacturing locations in the U.S. (over 900 million pounds of annual production capacity). WL Plastics is also ISO 9001:2015 certified at all locations along with carrying other third party certifications (FM, NSF, UL, etc).

### **WL Plastics offers many unique advantages, such as:**

- Production of a broad product mix of 1/2" to 54" pipe
- Strict quality standards for all product lines
- Over 900 million pounds of annual production capacity
- Experienced production personnel
- Close proximity to customers, facilitating quicker response times and speed to market
- ISO 9001:2015 certification along with carrying other third party certifications (FM, NSF, UL, etc).



## Industry segments



### Potable water

WL Plastics HDPE municipal water piping is manufactured to strict AWWA, ASTM, and NSF industry standards to provide standards to provide 100-year safe, trouble-free service life. With its tough, resilient properties, HDPE pipe is the the cost-effective choice for municipal water applications.



### Natural gas

WL Plastics specializes in the manufacture of polyethylene pipe, both medium density polyethylene (MDPE) and high-density polyethylene (HDPE), for natural gas distribution systems. WL's PE2708 MDPE and PE4710 HDPE is manufactured to the highest quality standards, exceeding requirements of ASTM D2513.



### Power and communications

WL Plastics HDPE conduit pipe provides a tough and durable protective pathway for power utility, telecommunications, fiber to the home (FTTx), and CATV applications. HDPE conduit provides installation cost savings when installed via horizontal directional drilling and plowing.



### Waste water

WL Plastics HDPE pipe offers resistance to corrosion, abrasions and chemicals with durability, strength and cost-effective installation. The lightweight, easy-to-install HDPE pipe saves considerable time and money, making it the ideal piping solution for sewer applications.



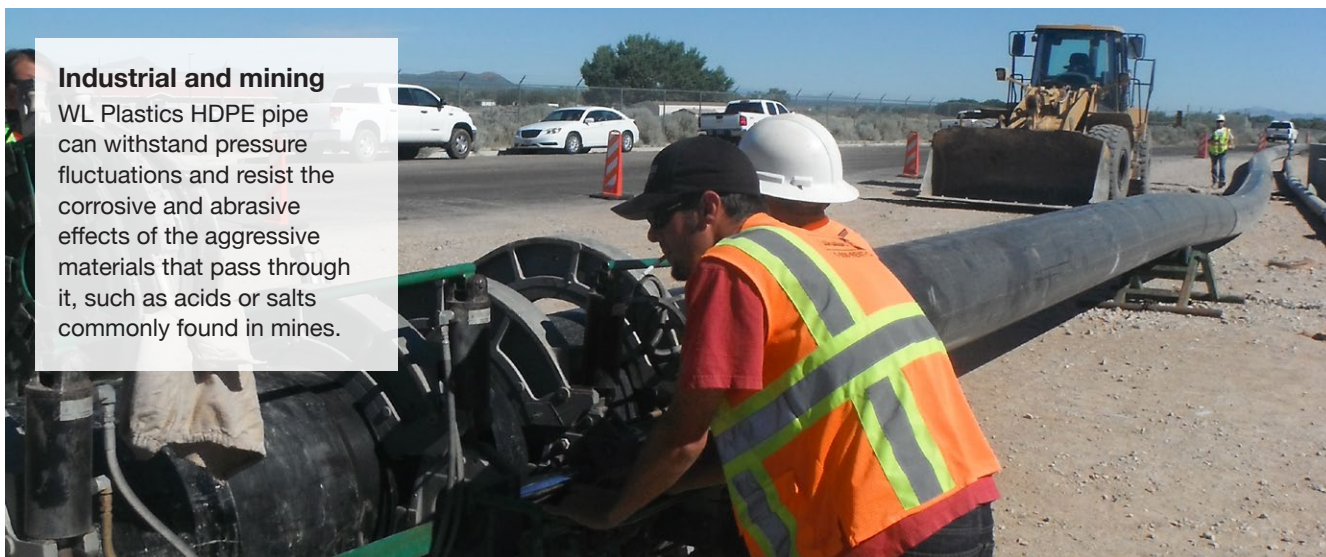
### Oil and gas

WL Plastics HDPE pipe is the ideal solution for gas gathering, crude transmission, saltwater disposal and slurry lines. The HDPE pipe is produced in accordance with the American Petroleum Institute (API) specification 15LE.



### Industrial and mining

WL Plastics HDPE pipe can withstand pressure fluctuations and resist the corrosive and abrasive effects of the aggressive materials that pass through it, such as acids or salts commonly found in mines.



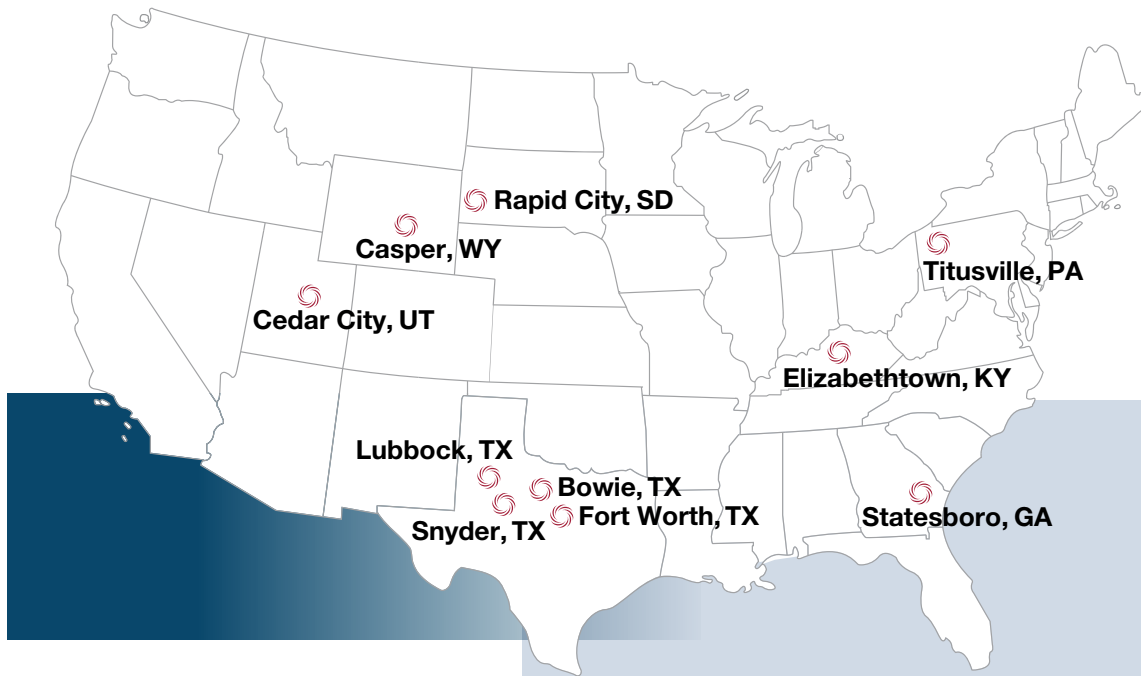


## Benefits of polyethylene (PE) pipe





**WL PLASTICS**  
An INEOS Business



## Manufacturing locations

Bowie, TX  
Casper, WY  
Cedar City, UT  
Elizabethtown, KY  
Lubbock, TX (HDPE)  
Lubbock, TX (MDPE)  
Rapid City, SD  
Snyder, TX  
Statesboro, GA  
Titusville, PA (HDPE/MDPE)

## Corporate office

3575 Lone Star Circle, Suite 300,  
Fort Worth, TX, 76177

## Contact

**Contact WL Plastics for more information**

**SALES:** [wlsales@wlplastics.com](mailto:wlsales@wlplastics.com)

**TECHNICAL:** [wltechnical@wlplastics.com](mailto:wltechnical@wlplastics.com)

This publication is intended for use as a piping system guide. It should not be used in place of a professional engineer's judgment or advice and it is not intended as installation instructions. The information in this publication does not constitute a guarantee or warranty for piping installations and cannot be guaranteed because the conditions of use are beyond our control. The user of this information assumes all risk associated with its use. WL Plastics Corporation has made every reasonable effort to ensure accuracy, but the information in this publication may not be complete, especially for special or unusual applications. Changes to this publication may occur from time to time without notice. Contact WL Plastics Corporation to determine if you have the most current edition. Publication duplication permitted.

