



The Value of Netrix

Leveraging a network's maximum potential and deploying the appropriate technology solution is where Netrix provides the most substantial value. Our mission is to provide best-in-class solutions and services for our clients' IT internetworking needs. At Netrix, we strive to be the standard by which quality of service and true client value for network integration and consulting is measured. By staying true to our core values for service, performance and results, we are setting that standard. Our commitment to quality is such that our clients are often satisfied before we are.

A low-angle, black and white photograph of several skyscrapers reaching towards a dark sky at night. The buildings are illuminated from within, with many windows glowing. The perspective is looking up from the base of the buildings, creating a sense of height and scale. The buildings are arranged in a way that they seem to converge towards the top of the frame.

Business Technology
Made Simple.





Welcome to the Bolt-On Guide to SharePoint

Easy way of understanding a very complex ecosystem of tools and options.

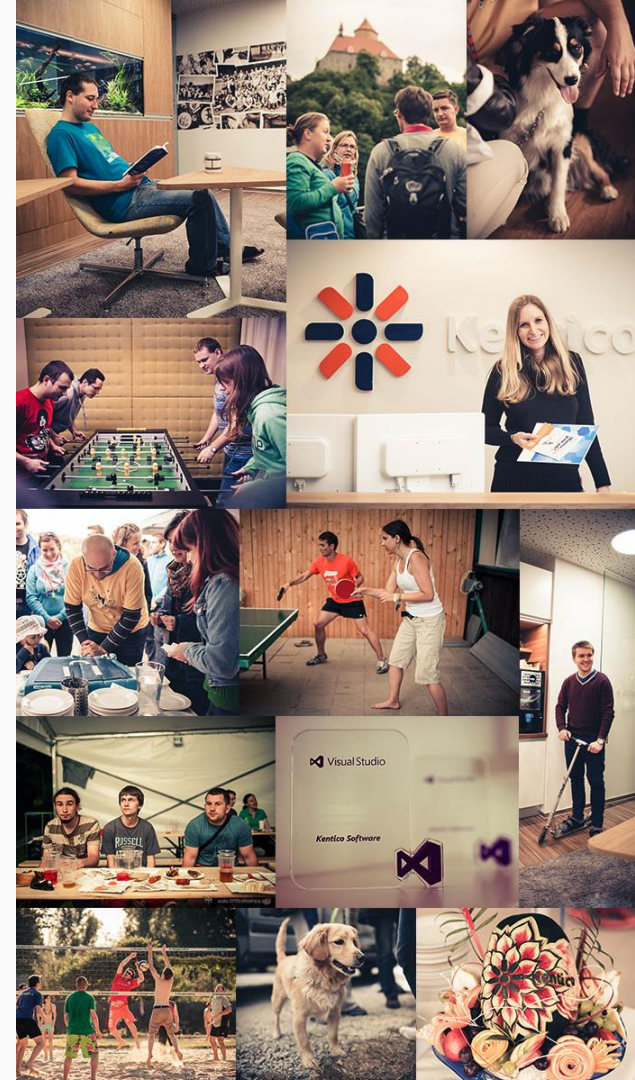
Authoring in SharePoint has been a common problem that has been addressed at many levels with this approach.



About Kentico

Kentico is based in Brno, Czech Republic. Founded in 2004 by CEO Petr Palas, it has been fully profit-funded throughout its history. Kentico is a Microsoft Gold Certified Partner.

3	continents	100	countries
4	offices	1,000	partners
150	employees	7,000	customers
		25,000	websites



About High Monkey

High Monkey is based in the twin cities and is a primary supporter of the Kentico user group community and a Gold Partner.

<http://www.highmonkey.com>

Location(s):

Minnesota Office

2520 Coon Rapids Blvd, Ste 110

Coon Rapids, MN 55433

12

Websites

4

Case Studies

2

Certified Developers

1

Sites of the Month

solutions

smart

solutions



Start with the end user.



How does IT
*provide ongoing
business value*
to the organization?



Business Technology
Made Simple



Collaboration Made
Simple

Past Projects just from Netrix – Collaboration Made Simple

- Education
- Healthcare
- Government
- Manufacturing
- Financial Services

800lbs SharePoint



Ecosystem

- Over 67 Companies doing specialized work to make SharePoint better
- Every part and element of SharePoint now has way and tools to improve it..
- [Why not use a better tool?](#)
- SharePoint is solid platform, is great at some things, and is widely used
- Workflows and pipelines

Bolt-On Performance



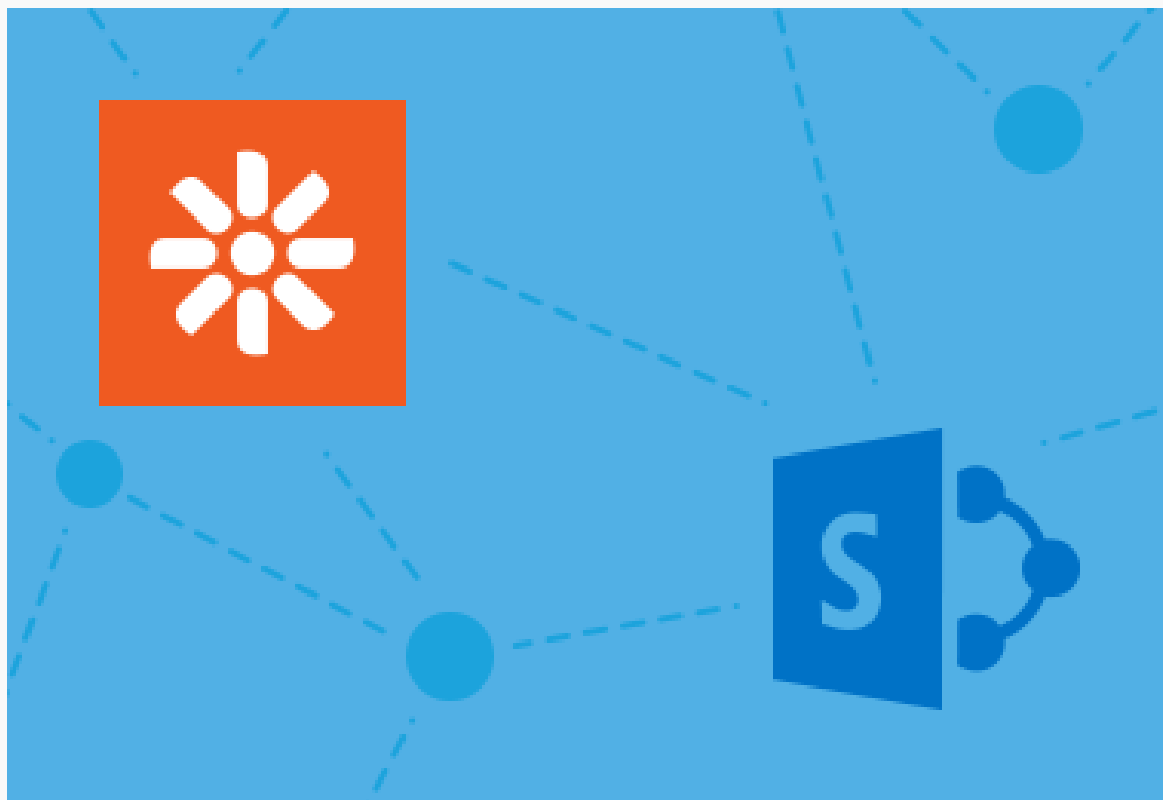
Bolt-On's that are making waves



- CMS
- BPM
- Search
- Workflow
- Document Management
- Taxonomy
- Restoration
- Social Networking
- Replication
- Migration

- INTEGRATED MARKETING SOLUTION





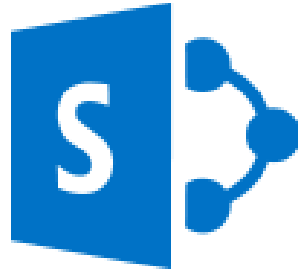
Rockwell Automation Story



Evan Nicoud
CTM
Kentico Software
Mobile 414-803-1372
evann@kentico.com

Paul Pomerleau
Account Executive
Concurrency
Mobile 262-903-0533
ppomerleau@concurrency.com

Rockwell
Automation



General

Display name:* SharePoint 2013

Code name:* SharePoint2013 ?

Site URL:* http://sharepoint2013/my/pe

SharePoint version:*
SharePoint 2013 ▼
SharePoint 2010
SharePoint 2013
SharePoint Online

Authentication

Authentication mode:* Windows authentication ▼

Username:* admin

Domain:

Password:

The Sharepoint Connector that comes out of the box in Kentico allows you to create multiple SharePoint connections for each site you have on SharePoint that populate data in Kentico. For each connection you can use different credentials and therefore have multiple security levels.

You can display any lists, document libraries, or picture galleries you have stored in SharePoint on your Kentico website using easy-to-use data source web parts. So no special transformation methods or any special functions are required!

Default

Web part control ID:* ▶

SharePointDataSource

Web part title: ▶

General

Connection:* ▶

SharePoint 2010 ▼

Retrieve:* ▶

- ☒ All lists of type
☐ Specified list's items

List type:* ▶

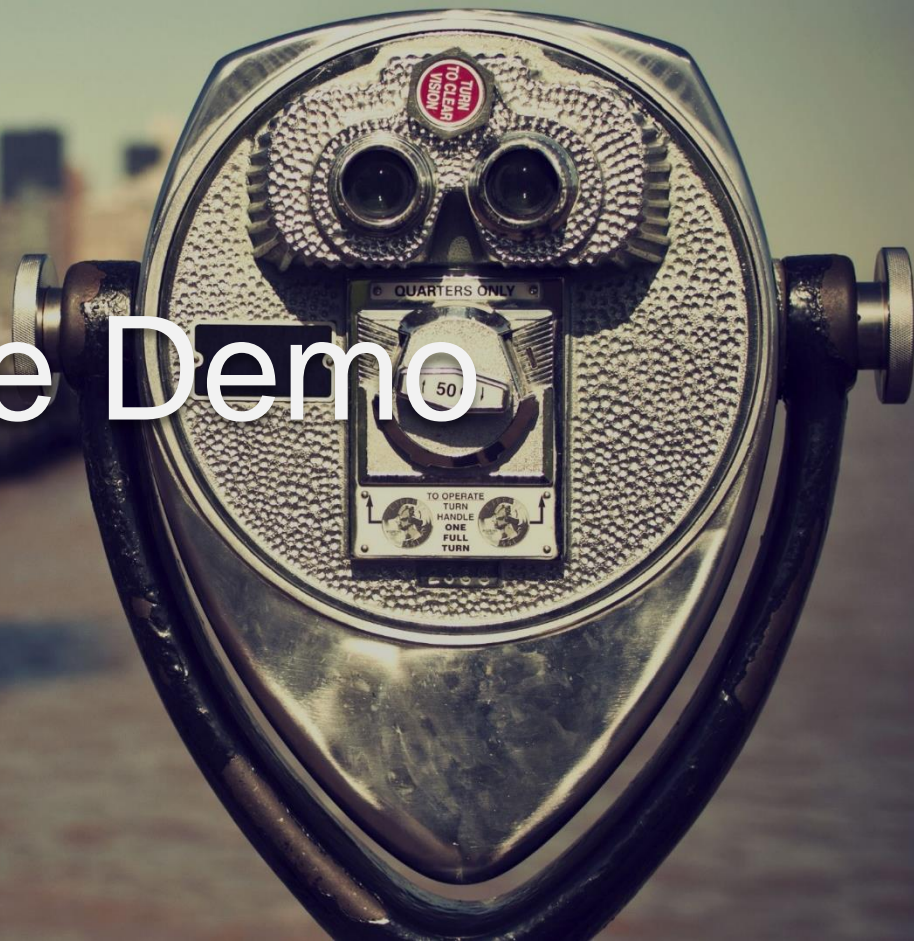
Custom list ▼

Custom list

Picture library

Document library

Live Demo





The End & Questions