

Keysight Technologies

# PCI Express® Protocol Triggering and Decode

For Infiniium 90000A, 90000 X-,  
90000 Q- and Z-Series Oscilloscopes

Data Sheet



PCI Express® (peripheral component interconnect express), PCIe, is a computer expansion card standard that enables high-speed serial technology. There are two main technologies protocol speeds from 2.5 Gb/s to 5 Gb/s (gen1 and gen2 respectively). PCIe gen 2 satisfies the increased need for bandwidth of high-performance applications such as graphics, and also allows existing applications to retain bandwidth while moving to a reduced pin count. The smaller link width ultimately leads to lower system cost. To understand what is occurring on the bus typically you must convert captured 1's and 0's to protocol with either protocol analyzer or manually. Of course, manually means that it can't be done in real-time, and includes potential for human error. Using a protocol analyzer sometimes increases the price for the PCIe solution as it requires an entirely new instrument. Unfortunately traditional oscilloscope hardware triggers and software capability typically are not sufficient for specifying protocol-level conditions and decoding complicated busses.

Keysight Technologies, Inc. Infiniium PCIe protocol viewer software enables the industry's first totally integrated oscilloscope-based protocol analyzer that provides time correlated views of physical layer and transaction layer errors. You get packet-level decode for PCI Express built into a real-time oscilloscope. This software provides you with a fast, easy way to isolate signal integrity problems from logic-level coding errors on bidirectional serial data streams. This capability allows you to test, debug and characterize your designs to the logic and link layer. Extend your scope capability with Infiniium's protocol viewer application. This application makes it easy to debug and test designs that include PCIe gens 1 and 2 using your Infiniium 90000 scope.

- Setup wizard for quick setup, configuration and test.
- Decode button for decoding with the push of a button
- Packet-level decode of data symbols as well as link and transaction layers
- Decode of scrambled and unscrambled symbols
- Bi-directional symbol and packet level decode
- Simultaneous display of packet/ symbol lists and waveform overlay
- Capability to save symbol and packet data lists to .csv and .txt files
- Packet decode details tab provides detailed information on:
  - Packets
  - Channel information
  - Complete listing window
  - Data symbols
  - Control and data symbols
  - Transaction header fields
  - Data payload popup
  - Payload display shows data payload
- Unique packet-waveform correlation marker "blue line" makes it easy to scroll through waveforms to view synchronized packet and symbol lists
- Comprehensive serial search capabilities
- Software trigger and stop on search
- Control symbol and packet search
- Debug your training and power management problems

## Rapid setup

Configure your oscilloscope to display protocol decode in under 30 seconds. Typically a variety of factors must be specified correctly in order for both software triggering and serial decode to work. These factors include sample rate, memory depth, trigger levels, and measurement thresholds. The application includes an AutoSetup capability that will automatically setup all of these parameters for the user. Or, choose to manually configure any or all of these scope settings or use the Serial Data Wizard.

Use protocol viewer as a trigger out of the trigger menu, for the most in depth and complete software triggering available in oscilloscopes today.

## Protocol decode

This application provides protocol decode capabilities. Decode can be turned in the "Setup" menu. Decode can be shown as symbols embedded on the waveform display or as a listing in a protocol viewer window. All decoding is time correlated.

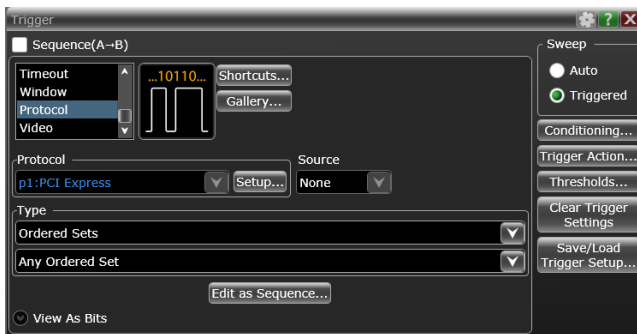


Figure 1: Easy triggering capability

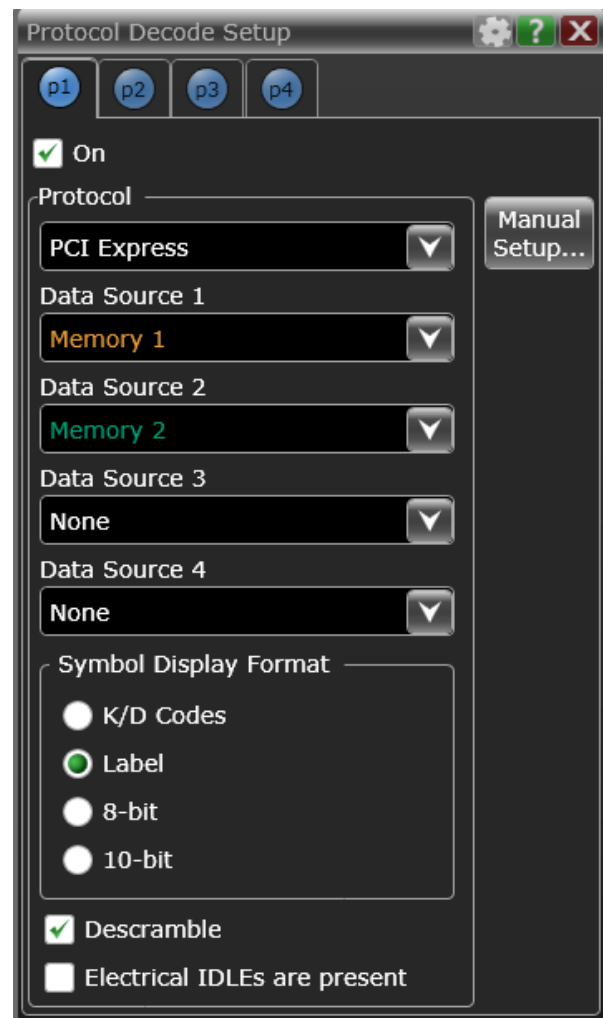


Figure 3: Unmatched triggering capability

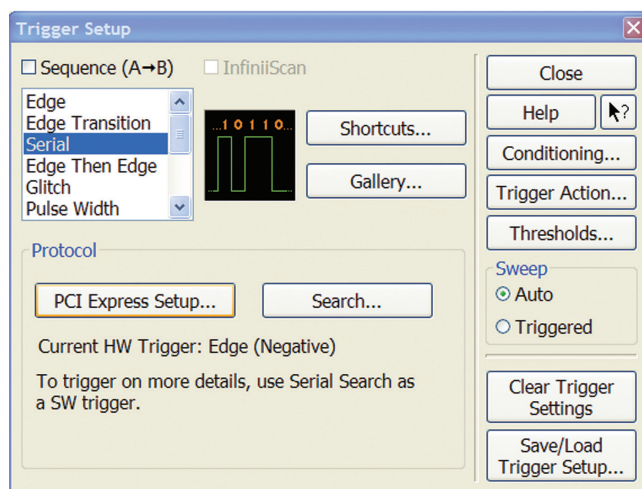


Figure 2: Integrated decoding capability PCIe protocol decode with precise time-correlation between waveforms and listing

Keysight's multi-tab protocol viewer includes correlation between the waveforms and the selected packet. The selected packet, highlighted blue row in the listing, is time-correlated with the blue line in the waveform display. Move the blue tracking marker in time through waveforms and the blue bar will automatically track in the packets window. Or, scroll through the packet viewer and highlight a specific packet. The time-correlation tracking marker will move to the associated point in the waveform.

## Support for bi-directional serial and packet decode

Choose up to two channels and get deep decoding capability for upstream and downstream bi-directional PCIe bus Infiniium 90000 windows.

## Full screen PCIe listing

Fill the entire display with compact protocol information using the full screen listing. The protocol viewer window shows the index number, time stamp value, and data content for each serial packet in the list. Scroll through all decoded serial packets to find events of interest or errors in the transmission. Data in the listing window can be saved to a .csv or .txt file for off-line analysis or documentation.

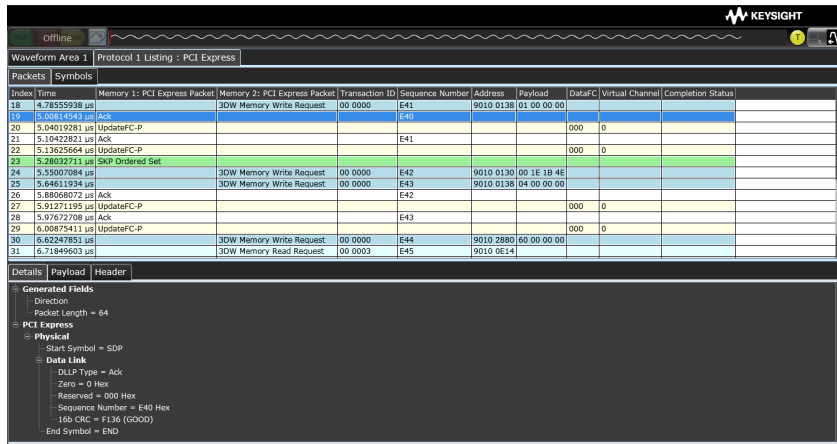


Figure 4: Time-correlated trigger menu

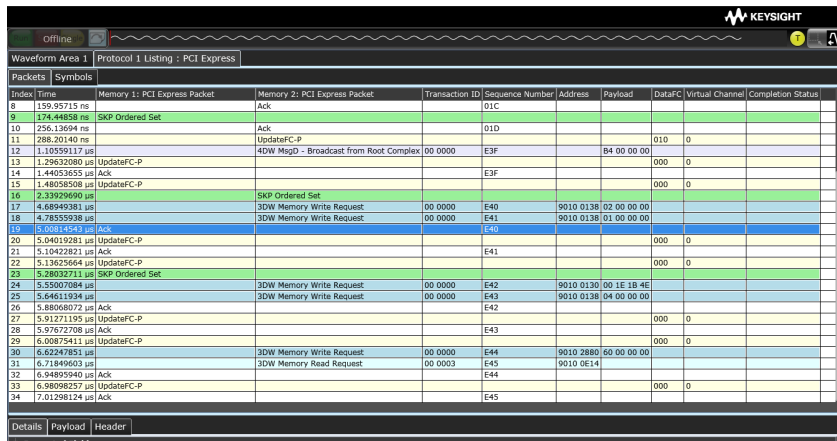


Figure 5: Full screen listing window

# Easy navigation with search

The application includes a powerful serial search tool that allows you to search for a pattern that is a data control symbol or packet. The search capability also includes a comprehensive packet search and trigger capability that allows you to specify search conditions like errors or data packets. This allows you to specify desired trigger conditions and makes finding errors or packet types easy by eliminating the need to do manual searches of very long records.

The application Includes five “tabs” for easy viewing of the PCIe bus:

- Details tab breaks the packets into easy-to-read textual fields. Hovering shows additional detail.
- Payload tab shows data carried by the packet in byte-by-byte HEX and ASCII.
- Header tab shows packets in a data book format. Hovering on any tab reveals additional detail.
- Packets tab that shows full details of each individual packet
- Symbols tab that shows the high level decoding of the bus

The PCIe protocol viewer also includes an easy-to-use navigation pane that allows you to quickly isolate the detail that you need.

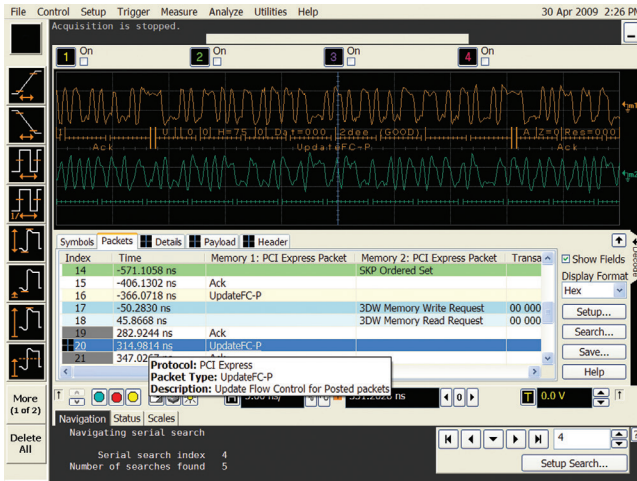


Figure 6: Easy navigation through the navigation pane

Index	Memory 1	Memory 2
2665	40+	0-
2666	F1-	0+
2667	36+	0+
2668	END-	0-
2669	SDP-	0+
2670	80+	0-
2671	25+	0-
2672	0-	0+
2673	0+	0+
2674	39-	0+
2675	47-	0+
2676	END-	0+
2677	0-	0-
2678	0+	0-
2679	0+	0-
2680	0-	0-
2681	0+	0-
2682	0-	0-
2683	0+	0-
2684	0-	0-
2685	SDP-	0-
2686	0+	0-

Figure 8: Symbol tab provides fast overview and searching capability

Header	+0	+1	+2	+3
Byte 0	DLLP Type	Zero	Reserved	Sequence Number
	0x0	0x0	0x000	0xE40

Figure 7: Header tab provides packets in a data book format

Index	Time	Memory 1: PCI Express Packet	Memory 2: PCI Express Packet	Transaction ID	Sequence Number	Address	Payload	DataFC	Virtual Channel	Completion Status
5	-98.07953 ns	UpdateFC-NP						000	0	
6	-17.94270 ns	3DW Completion with Data		00 0002	01C		00 00 00 01			Successful Completion
7	78.26614 ns	4DW Msg - Local - Terminate at Receiver		04 0000	01D					
8	159.95715 ns	Ack			01C					
9	174.44818 ns	SKP Ordered Set								
10	256.13694 ns	Ack			01D					
11	288.20140 ns	UpdateFC-P					010	0		
12	1.10559117 us	4DW MsgD - Broadcast from Root Complex		00 0000	E3F		B4 00 00 00			
13	1.29632080 us	UpdateFC-P						000	0	
14	1.44053655 us	Ack			E3F					
15	1.48058508 us	UpdateFC-P						000	0	
16	2.33929690 us	SKP Ordered Set								
17	4.68949381 us	3DW Memory Write Request		00 0000	E40	9010 0138	02 00 00 00			
18	4.78555938 us	3DW Memory Write Request		00 0000	E41	9010 0138	01 00 00 00			
19	5.00814543 us	Ack			E40					
20	5.04019281 us	UpdateFC-P						000	0	
21	5.10422821 us	Ack			E41					
22	5.13625664 us	UpdateFC-P						000	0	
23	5.28032711 us	SKP Ordered Set								
24	5.55007084 us	3DW Memory Write Request		00 0000	E42	9010 0130	00 1E 1B 4E			

Figure 9: Packet view provides full detail of all PCIe packets

## PCIe specifications and characteristics

PCIe source (clock and data)	Analog channels 1,2, 3, or 4 , Any waveform memory
PCIe	gen 2 (up to 5 Gbps (automatic)) or gen 1 (2.5 Mb/s) 1x (bi-directional)
Autoset	Automatically configures scope settings for proper PCIe decode and protocol triggering including clock recovery
Triggering (software-based search)	Packet types Ordered sets Packets DLLP packets TLP packets 3DW packets 4DW packets Symbol sequence Errors  Packet set type SKP ordered set Fast training sequence Electrical Idle ordered set Electrical Idle exit set TS1 training sequence TS2 training sequence Modified compliance pattern Delayed modified compliance pattern Compliance pattern Delayed compliance
Decode options	Symbol display formats Hex K/D codes Label Decimal  Maximum number of directions (2)

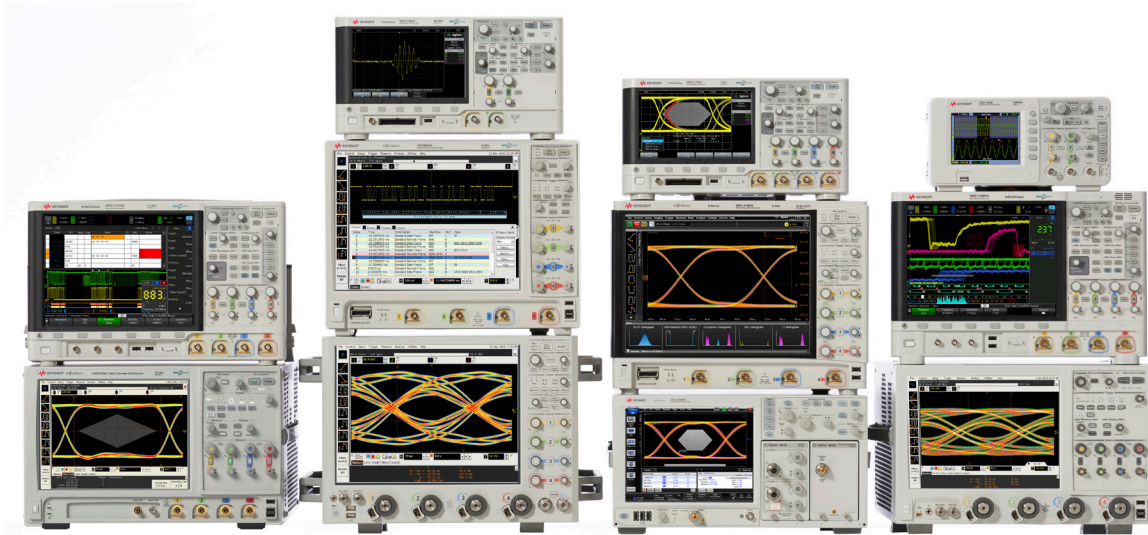
## Ordering information

This application is compatible with all Infiniium Series oscilloscopes.

License type		Infiniium Z-Series	Infiniium S-Series	Infiniium 90000A, X-, and Q-Series	Infiniium 9000 Series
Fixed	Factory-installed	N5463A-1FP	N5463B-1FP	Option 017	Option 006
	User-installed			N5463A-1NL	N5463B-1NL
Floating	Transportable	N5463A-1TP	N5463B-1TP	N5463A-1TP	N5463B-1TP
	Server-based	N5435A-032			

## Related literature

Publication title	Publication type	Publication number
<i>PCI Express Compliance Application</i>	Data sheet	5989-1240EN



## Keysight Technologies Oscilloscopes

Multiple form factors from 20 MHz to > 90 GHz | Industry leading specs | Powerful applications

## Evolving Since 1939

Our unique combination of hardware, software, services, and people can help you reach your next breakthrough. We are unlocking the future of technology.

From Hewlett-Packard to Agilent to Keysight.



For more information on Keysight Technologies' products, applications or services, please contact your local Keysight office. The complete list is available at:

[www.keysight.com/find/contactus](http://www.keysight.com/find/contactus)

### Americas

Canada	(877) 894 4414
Brazil	55 11 3351 7010
Mexico	001 800 254 2440
United States	(800) 829 4444

### Asia Pacific

Australia	1 800 629 485
China	800 810 0189
Hong Kong	800 938 693
India	1 800 11 2626
Japan	0120 (421) 345
Korea	080 769 0800
Malaysia	1 800 888 848
Singapore	1 800 375 8100
Taiwan	0800 047 866
Other AP Countries	(65) 6375 8100

### Europe & Middle East

Austria	0800 001122
Belgium	0800 58580
Finland	0800 523252
France	0805 980333
Germany	0800 6270999
Ireland	1800 832700
Israel	1 809 343051
Italy	800 599100
Luxembourg	+32 800 58580
Netherlands	0800 0233200
Russia	8800 5009286
Spain	800 000154
Sweden	0200 882255
Switzerland	0800 805353
	Opt. 1 (DE)
	Opt. 2 (FR)
	Opt. 3 (IT)
United Kingdom	0800 0260637

For other unlisted countries:

[www.keysight.com/find/contactus](http://www.keysight.com/find/contactus)  
(BP-9-7-17)

**DEKRA Certified**  
ISO 9001 Quality Management System

[www.keysight.com/go/quality](http://www.keysight.com/go/quality)  
Keysight Technologies, Inc.  
DEKRA Certified ISO 9001:2015  
Quality Management System

This information is subject to change without notice.  
© Keysight Technologies, 2017  
Published in USA, December 2, 2017  
5990-4058EN  
[www.keysight.com](http://www.keysight.com)

### myKeysight

#### myKeysight

[www.keysight.com/find/mykeysight](http://www.keysight.com/find/mykeysight)

A personalized view into the information most relevant to you.

[http://www.keysight.com/find/emt\\_product\\_registration](http://www.keysight.com/find/emt_product_registration)

Register your products to get up-to-date product information and find warranty information.

### KEYSIGHT SERVICES

Accelerate Technology Adoption.  
Lower costs.

#### Keysight Services

[www.keysight.com/find/service](http://www.keysight.com/find/service)

Keysight Services can help from acquisition to renewal across your instrument's lifecycle. Our comprehensive service offerings—one-stop calibration, repair, asset management, technology refresh, consulting, training and more—helps you improve product quality and lower costs.



#### Keysight Assurance Plans

[www.keysight.com/find/AssurancePlans](http://www.keysight.com/find/AssurancePlans)

Up to ten years of protection and no budgetary surprises to ensure your instruments are operating to specification, so you can rely on accurate measurements.

#### Keysight Channel Partners

[www.keysight.com/find/channelpartners](http://www.keysight.com/find/channelpartners)

Get the best of both worlds: Keysight's measurement expertise and product breadth, combined with channel partner convenience.

PCI-SIG®, PCIe® and the PCI Express® are US registered trademarks and/or service marks of PCI-SIG.

[www.keysight.com/find/90000\\_PCI\\_protocol\\_viewer](http://www.keysight.com/find/90000_PCI_protocol_viewer)

