

# FTB-2 Pro Platform

THE MOST COMPACT MULTITECHNOLOGY  
PLATFORM FOR THE SUPERTECH



PART OF THE  
EXFO | FTB Ecosystem

 EXFO Connect  
Compatible

**100G**

A design patent is pending for the FTB-2 Pro platform.

The FTB-2 Pro is the most compact solution for high-speed, multitechnology and multiservice testing

## KEY FEATURES

**Connects anywhere:** USB, 3G/4G/LTE, Wi-Fi, VPN and Bluetooth

**Loaded with utilities:** All the tools required to maximize field testing, and any third-party application

**Like a PC:** Quad-core processor and Windows 8.1 Pro operating system

**EXFO Connect-compatible:** Automated asset management; data goes through the cloud and into a dynamic database

## COMPLEMENTARY PRODUCT



Fiber Inspection Probe  
FIP-400B

**EXFO**

## THE POWER YOU NEED FOR HIGH-SPEED APPLICATIONS

The FTB-2 Pro delivers all the power of a high-end platform in a conveniently sized go-anywhere field-testing tool.

### APPLICATIONS

40G  
ROADM

#### 40G and ROADM Commissioning

House an OSA into a compact portable solution for fast and accurate DWDM commissioning and turn-up of high-speed networks—up to 100 Gbit/s.

Multiservice  
Testing

#### Multiservice Testing

Easily turn up, validate and troubleshoot DSn/PDH, SONET/SDH and Ethernet services up to 10 Gbit/s in converged optical networks. Delivering IPTV test capabilities and TCP throughput assessment.

Ethernet  
Testing

#### Ethernet Testing from 10 Mbit/s to 100 Gbit/s

100% line-rate testing of IP traffic at up to 100G; RFC 2544 and Y.1564 Ethernet service activation with full statistics, packet capture, traffic filtering, ping and traceroute with clear pass/fail verdicts.

Fiber  
Character-  
ization

#### Fiber Characterization

OTDR/iOLM testing combined with fiber inspection and optical power measurement for link characterization and troubleshooting.

### OPTICAL TEST MODULES

Optical Channel Analyzer	FTB-5230S-OCA
Optical Spectrum Analyzer	FTB-5230S FTB-5240S
OTDR	FTB-7200D FTB-7300E FTB-7400E FTB-7500E FTB-7600E

### TRANSPORT AND DATACOM TEST MODULES

Multiservice	FTB-8830NGE
10M-to-100G High-speed Multiservice	FTB-88100NGE
40G/100G High-speed Multiservice	FTB-88100G

## DELIVERING UNIQUE PERFORMANCE

The FTB-2 Pro platform leverages a powerful quad-core processor to deliver unmatched speed and performance for the most demanding test applications.

## THE WINDOWS 8.1 PRO ADVANTAGE

Stay productive and connected while on the move with Windows compatible applications and services.

### Applications

Use them the way you always have. Word, Excel, Powerpoint, and other programs you count on can be installed so you can work the way you're used to.

### Best user Experience

- › Faster start time
- › Multitasking

### Familiar Desktop

- › File Explorer
- › Boot to Desktop
- › Start Button

### Apps for Everyone

- › Skype
- › OneDrive
- › Windows Store

Connect to a wide range of devices: printers, cameras, keyboards, mice, etc.



## OPTICAL PLUG-AND-PLAY OPTIONS

The platform can host optical plug-and-play options that can be purchased whenever you need them, at the time of your order or later on. In either case, installation is a snap. You can do it by yourself, without any software update required.

### Optical Power Meter

A high-level power meter (GeX) that can measure up to 27 dBm, the highest in the industry. This is essential for HFC networks or high-power signals. If used with an auto-lambda/auto-switching compatible light source, the power meter automatically syncs on the same wavelength, avoiding any risk of mismatched measurement.

- › Extensive range of connectors
- › Auto-Lambda and Auto-Switching
- › Offers measurement storage and reporting
- › Choice of seven standard or CWDM calibrated wavelengths

### Visual Fault Locator (VFL)

The plug-and-play VFL easily identifies breaks, bends, faulty connectors and splices, in addition to other causes of signal loss. This basic, yet essential troubleshooting tool, should be part of every field technician's toolbox. Visually locating faults by creating a bright-red glow at the exact location of the fault on singlemode or multimode fibers, it can detect faults over distances of up to 5 km. (Available with the Optical Power Meter only)

**FIBER CONNECTOR INSPECTION AND CERTIFICATION — THE ESSENTIAL FIRST STEP**



Taking the time to properly inspect a fiber-optic cable can prevent a slew of problems down the line—saving you time, money and headaches.

**FIP-430B | The First Fully Automated Fiber Inspection Probe for the Field**

Housing a unique automatic focus adjustment system, the FIP-430B automates each operation in the connector endface inspection sequence, transforming this critical process into one quick and easy step, which can be performed by technicians of all skill levels.

**100%**  
Automated<sup>a</sup>

**1-step**  
process<sup>a</sup>

**57%**  
shorter test time<sup>b</sup>

**3 models to fit your budget:**

FEATURES			
	Basic FIP-410B	Semi-Automated FIP-420B	Fully-Automated FIP-430B
Three magnification levels	✓	✓	✓
Image capture	✓	✓	✓
Five-megapixel CMOS capturing device	✓	✓	✓
Automatic fiber image-centering function	✗	✓	✓
Automatic focus function	✗	✗	✓
On-board pass/fail analysis	✗	✓	✓
Pass/fail LED indicator	✗	✓	✓



Read the FIP-400B specification sheet or visit [www.EXFO.com/keepthefocus](http://www.EXFO.com/keepthefocus) for more information.

**Notes**

- a. Model FIP-430B only.
- b. Data sourced from EXFO's case study, with calculation based on typical analysis time.

## SOFTWARE TEST TOOLS

This series of platform-based software testing tools enhance the value of the FTB-2 Pro platform, providing additional testing capabilities without the need for additional modules or units.

### EXpert TEST TOOLS

#### EXpert VoIP TEST TOOLS

EXpert VoIP generates a voice-over-IP call directly from the test platform to validate performance during service turn-up and troubleshooting.

- › Supports a wide range of signaling protocols, including SIP, SCCP, H.248/Megaco and H.323
- › Supports MOS and R-factor quality metrics
- › Simplifies testing with configurable pass/fail thresholds and RTP metrics

#### EXpert IP TEST TOOLS

EXpert IP integrates six commonly used datacom test tools into one platform-based application to ensure that field technicians are prepared for a wide range of testing needs.

- › Rapidly performs debugging sequences with VLAN scan and LAN discovery
- › Validates end-to-end ping and traceroute
- › Verifies FTP performance and HTTP availability

#### EXpert IPTV TEST TOOLS

This powerful IPTV quality assessment solution enables set-top-box emulation and passive monitoring of IPTV streams, allowing quick and easy pass/fail verification of IPTV installations.

- › Real-time video preview
- › Analyzes up to 10 video streams
- › Comprehensive QoS and QoE metrics including MOS score

### THIRD-PARTY TEST TOOLS

#### Wireshark

This live-network packet-capture utility makes it possible to look “inside” the packets and obtain data such as transmission time, source, destination, protocol type, etc. Users can then diagnose a problem or root out suspicious behavior.

### SOFTWARE APPLICATIONS

#### ConnectorMax2

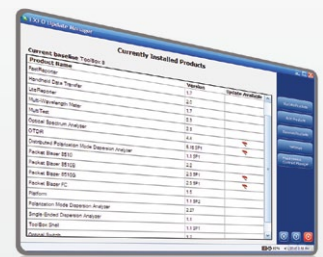
Providing lightning-fast results in the first step of fiber-link testing, ConnectorMax2 is a powerful platform-based, automated inspection application; it delivers quick pass/fail assessment of connector endfaces and is specifically designed to save both time and money in the field.

#### FastReporter2 EFFICIENT POST-PROCESSING SOFTWARE

Consolidated data management and post-processing tool designed to increase reporting productivity for connector endface inspection and all types of optical-layer testing: optical link mapper (iOLM), OTDR, ORL, loss, PMD and chromatic dispersion (CD).

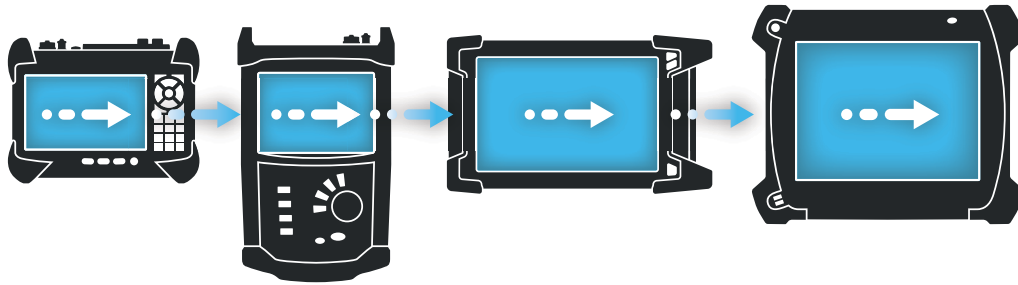
## UPDATE MANAGER

Stay current with the FTB-2 Pro Update Manager, which enables you to easily manage the applications developed for your test solution. Thanks to EXFO's feature enhancement program, it has never been easier to benefit from our latest innovation. Based on customer feedback, acute market trend analysis and compliance with the latest standards, EXFO is committed to ensuring that your product is at its best.



## CONNECTED ANYWHERE, ANYTIME

The value of connectivity resides in the ability to connect your platform anywhere, at any time. That's why we have equipped our platforms with the technology to be as flexible as possible. Whether to transfer data to the cloud, to a device or to acquire a platform's location via GPS, you have what it takes.



## Bluetooth - WiFi - 3G - LTE



### Secure VPN communications

With the ability to install and configure any VPN client solutions defined by your IT department. Secure communications are now within your reach.



### 3G/LTE mobility

Get connected wherever you are, choose any Windows supported 3G/LTE USB dongle and connect to your wireless service provider.



### Remote control

Use remote assistance to troubleshoot units in the field, trigger tests remotely or help a technician with a problem. Working without it is hard to imagine.



### Instant messaging

Since our platforms are Windows-based, they are just like a PC. You can install chat tools to quickly communicate with your team. Skype comes pre-installed.

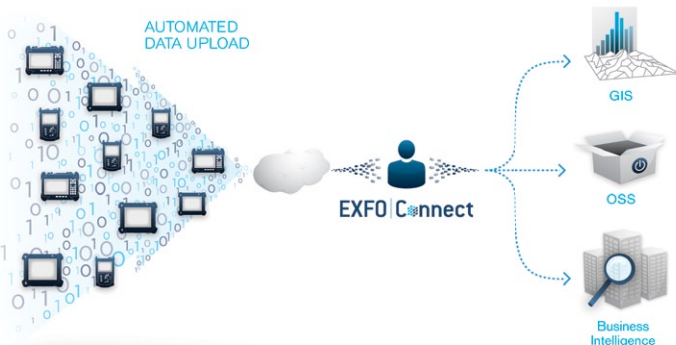
# EXFO | Connect

## EXFO CONNECT MAKES YOUR DATA MEAN BUSINESS

EXFO Connect completely redefines integrated testing with its cloud-hosted solution. Equipped with powerful database and application technologies, EXFO Connect provides an automated, secure environment that links together your EXFO test instruments, and centralizes captured data across your organization. With its powerful correlation engine, EXFO Connect enables you to convert captured data into actionable information through customized test-data reporting and features that streamline test operations from build-out to maintenance.

### Test Equipment Manager

EXFO Connect's Test Equipment Manager is an automated application that centralizes the management of all EXFO test instruments. It's a repository for software loads, licenses and platform profiles to help managers handle constant demands for software updates. It keeps track of equipment and ensures field technicians are equipped with up-to-date capabilities.

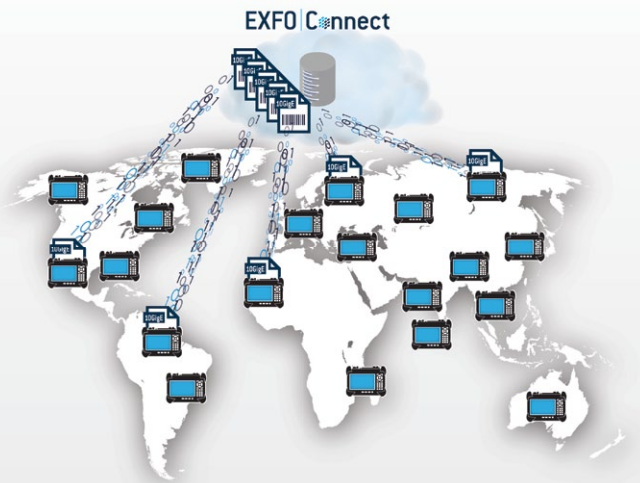


### Test Data Manager

EXFO Connect's Test Data Manager is an automated application that provides a secure and centralized environment in which test data is collected, archived and referenced for future use. With test results at their fingertips, managers can create birth certificates, generate reports and set benchmarks.

### FTB Anywhere: Floating test licenses

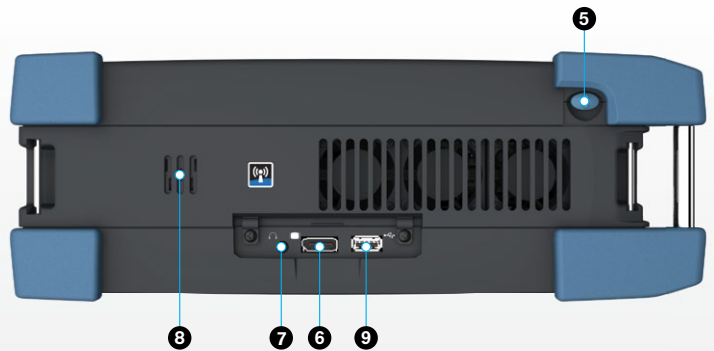
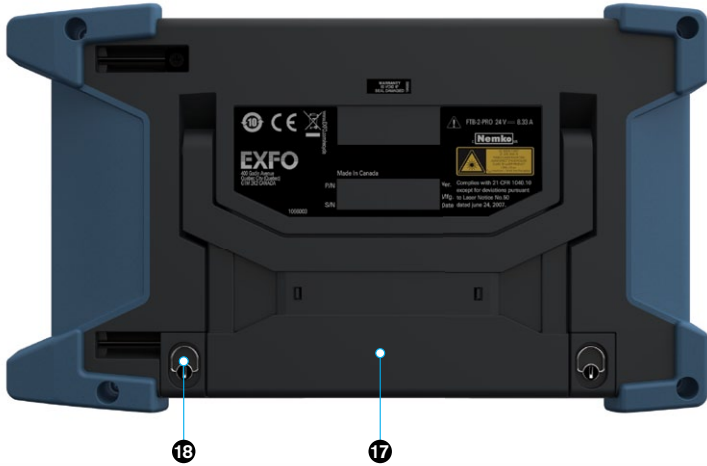
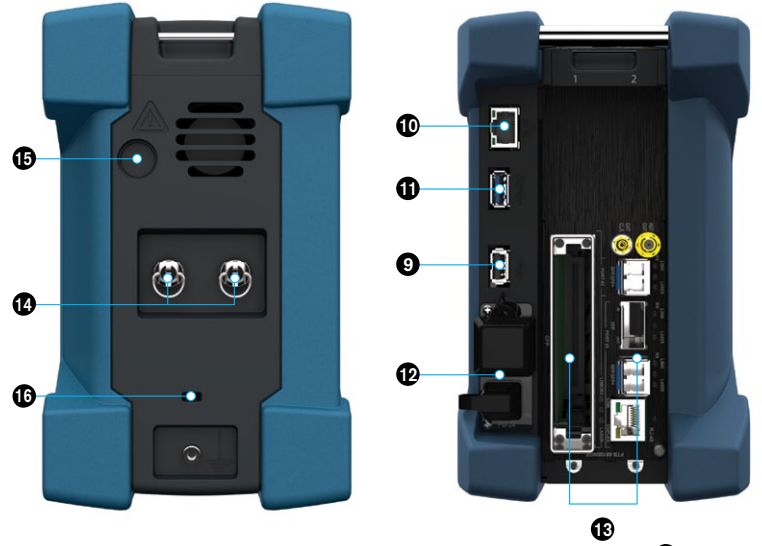
FTB Anywhere™, a shared test license capability for the award-winning FTB Ecosystem. This unique approach in delivering advanced test applications enables network operators to purchase a certain number of cloud-hosted licenses that can be shared instantly with their technicians, wherever they are.





## DESIGNED FOR HIGH-SPEED AND MULTISERVICE

- ❶ Power on/off
- ❷ Switch application
- ❸ Keyboard/screen capture
- ❹ Battery LED
- ❺ Stylus
- ❻ Display port
- ❼ Headset jack
- ❽ Speaker
- ❾ USB 2.0 port
- ❿ 1 GigE port
- ⓫ USB 3.0 port
- ⓬ Power meter and VFL
- ⓭ Two slots to house modules
- ⓮ Module screws
- ⓯ AC adapter
- ⓰ Kensington security lock slot
- ⓱ Back stand
- ⓲ Battery compartment





### TECHNICAL SPECIFICATIONS <sup>a</sup>

Display	Touchscreen, color, 1280 × 800 TFT 256 mm (10.1 in)
Interfaces	RJ-45 LAN 10/100/1000 Mbit/s Two USB 2.0 ports One USB 3.0 port Display port Headset jack
Storage	64 GB internal memory (flash)
Battery	Two rechargeable Li-ion smart batteries
Power supply	AC/DC adapter, input: ~ 100 – 240 V; 50/60 Hz; 4.0 VA max, output: --- 24 V; 8.33 A
Computer	Quad-core processor / 4 GB RAM / Windows 8.1 Pro

### GENERAL SPECIFICATIONS

Size (H × W × D)	199 mm × 333 mm × 119 mm (7 <sup>13</sup> / <sub>16</sub> in × 13 <sup>1</sup> / <sub>8</sub> in × 4 <sup>11</sup> / <sub>16</sub> in)
Weight <sup>c</sup>	3 kg (6.6 lb)
Temperature	
Operation	0 °C to 50 °C (32 °F to 122 °F)
Storage <sup>b</sup>	-40 °C to 60 °C (-40 °F to 140 °F)
Relative humidity	≤95 % non-condensing

### BUILT-IN POWER METER SPECIFICATIONS (GEX) (OPTIONAL) <sup>d</sup>

Calibrated wavelengths (nm)	850, 1300, 1310, 1490, 1550, 1625, 1650
Optional CWDM calibrated wavelengths (nm)	1270, 1290, 1310, 1330, 1350, 1370, 1390, 1410, 1430, 1450, 1470, 1490, 1510, 1530, 1550, 1570, 1590, 1610, 1383, 1625
Power range (dBm) <sup>e</sup>	27 to -50
Uncertainty (%) <sup>e, f</sup>	±5 % ± 10 nW
Display resolution (dB)	0.01 = max to -40 dBm 0.1 = -40 dBm to -50 dBm

### VISUAL FAULT LOCATOR (VFL) (OPTIONAL)

Laser, 650 nm ± 10 nm
CW/Modulate 1 Hz
Typical P <sub>out</sub> in 62.5/125 μm: >-1.5 dBm (0.7 mW)

### LASER SAFETY



The test modules that you use with your unit may have different laser classes. Refer to the module's documentation for exact information.

#### Notes

- a. All specifications valid at 23 °C (73 °F).
- b. Not including internal batteries. Battery storage temperatures: -20 °C to 60 °C (-4 °F to 140 °F) for shipping, and -20 °C to 45 °C (-4 °F to 113 °F) for long-term storage.
- c. Platform without batteries or modules
- d. At 23 °C ± 1 °C, 1550 nm and FC connector. With modules in idle mode. Battery operated after warm-up.
- e. Typical.
- f. At calibration conditions.

## ORDERING INFORMATION

## FTB-2-PRO-XX-XX-XX-XX-XX-XX-XX-XX

**Model**

FTB-2-PRO = Modular platform

**Display**

S1 = TFT active screen

S2 = Outdoor-enhanced screen

**Memory**

64G = 64 GB internal memory (flash)

**Wi-Fi/Bluetooth option**

00 = Without RF capability

RF = With RF capability (Wi-Fi and Bluetooth)

**Power meter**

00 = Without power meter

VPM2X = VFL platform; PM; GeX detector

VPM2X-CWDM = VFL platform; PM; GeX detector; CWDM wavelengths calibrated (from 1270 nm to 1610 nm)

**Connector adapter<sup>a</sup>**

FOA-12 = Biconic

FOA-14 = NEC D4: PC, SPC, UPC

FOA-16 = SMA/905, SMA-906

FOA-22 = FC/PC, FC/SPC, FC/UPC, FC/APC

FOA-28 = DIN 47256, DIN 47256/APC

FOA-32 = ST: ST/PC, ST/SPC, ST/UPC

FOA-54 = SC: SC/PC, SC/SPC, SC/UPC, SC/APC)

FOA-78 = Radiall EC

FOA-96B = E-2000 E-2000/APC

FOA-98 = LC

FOA-99 = MU

**Software option**

00 = Without any software option

IPT = Ping and traceroute functionalities

EXpert-VolP = RTP-based call testing software application, including packet loss analysis, jitter measurement and complete voice quality metrics

EXpert-IP = IP/Ethernet test suite, with tests including FTP performance, HTTP availability, VLAN scan, LAN discovery, ping, traceroute, IP/Ethernet port statistics (license for a single platform)

EXpert-IPTV = IPTV test suite

EXpert-TPP-Bundle = Triple-play bundle for voice, video and data testing; includes EXpert IP Test Tools, EXpert IPTV Test Tools, EXpert VoIP Test Tools and EXpert SIP

EXpert-SIP = SIP call signaling support<sup>b</sup>EXpert-SCCP = SCCP call signaling support<sup>b</sup>EXpert-H.323 = H.323 call signaling support<sup>b</sup>EXpert-H.248 = H.248/Megaco call signaling support<sup>b</sup>

FR2-PL = FastReporter 2 Software

Fiber Characterization package

FR2-PL-LB = FastReporter 2 Software

Fiber Characterization package and iOLM Loopback mode

**Inspection Probe Base Tips<sup>c</sup>**

APC = Includes FIPT-400-U25MA and FIPT-400-SC-APC

UPC = Includes FIPT-400-U25M and FIPT-400-FC-SC

**Inspection Probe Models**

00 = Without Inspection Probe

FP410B = Digital video inspection probe<sup>d</sup>  
Triple magnificationFP420B = Analysis digital video inspection probe<sup>d</sup>  
Automated pass/fail analysis  
Triple magnification  
AutocenteringFP430B = Automated analysis digital video inspection probe<sup>d</sup>  
Automated focus  
Automated pass/fail analysis  
Triple magnification  
Autocentering

Example: FTB-2-PRO-S1-64G-RF-VPM2X-FOA-54-FP420B-APC-EXPERT-IP

**Notes**

- Available if power meter is selected.
- Available if EXpert VoIP selected.
- Available if inspection probe is selected.
- Includes ConnectorMax2 software.

EXFO Headquarters > Tel.: +1 418 683-0211 | Toll-free: +1 800 663-3936 (USA and Canada) | Fax: +1 418 683-2170 | info@EXFO.com | [www.EXFO.com](http://www.EXFO.com)EXFO serves over 2000 customers in more than 100 countries. To find your local office contact details, please go to [www.EXFO.com/contact](http://www.EXFO.com/contact).

EXFO is certified ISO 9001 and attests to the quality of these products. EXFO has made every effort to ensure that the information contained in this specification sheet is accurate. However, we accept no responsibility for any errors or omissions, and we reserve the right to modify design, characteristics and products at any time without obligation. Units of measurement in this document conform to SI standards and practices. In addition, all of EXFO's manufactured products are compliant with the European Union's WEEE directive. For more information, please visit [www.EXFO.com/recycle](http://www.EXFO.com/recycle). **Contact EXFO for prices and availability or to obtain the phone number of your local EXFO distributor.**

For the most recent version of this spec sheet, please go to the EXFO website at [www.EXFO.com/specs](http://www.EXFO.com/specs).

In case of discrepancy, the Web version takes precedence over any printed literature.