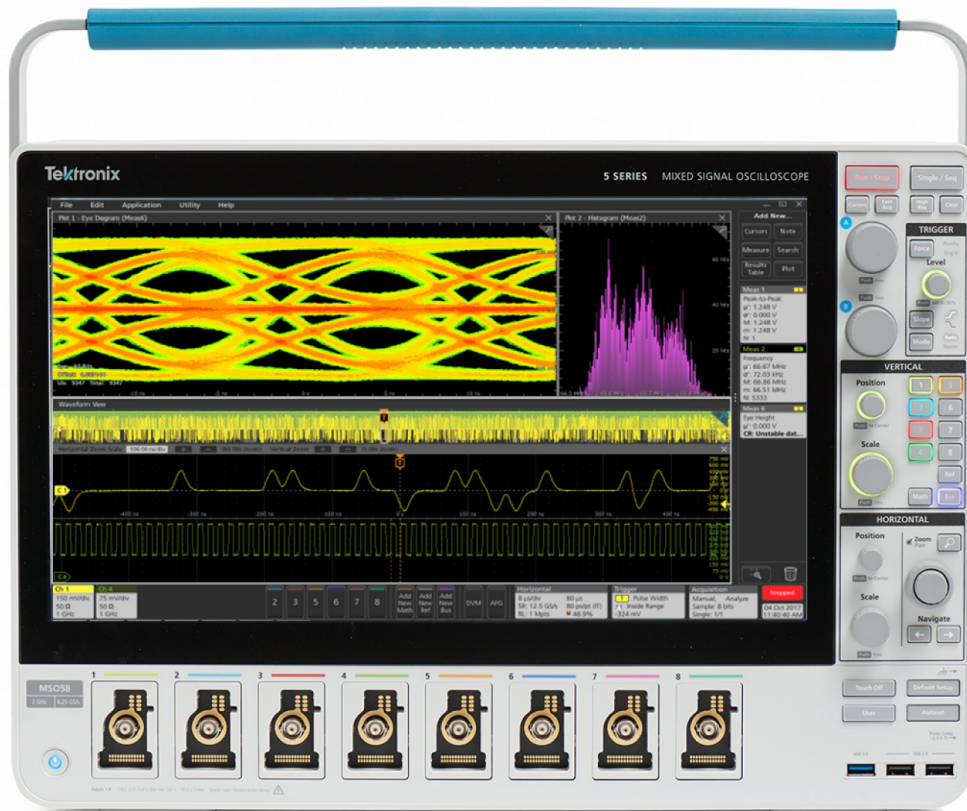


Automotive Ethernet Test Solution

1000BASE-T1/100BASE-T1 (Opt. 6-CMAUTOEN/5-CMAUTOEN)

Datasheet

*Get more visibility into your
PAM3 automotive Ethernet designs*



The Tektronix 5-CMAUTOEN/6-CMAUTOEN Automotive Ethernet Solution is a fully automated compliance test software application for 1000BASE-T1 and 100BASE-T1 standards. The test suite runs on the 5/6 Series MSO, letting you take full advantage of validation and debug capabilities in the oscilloscope in addition to compliance testing. The integration of automotive ethernet is placing greater demands on technology and is placing even greater demands on comprehensive design validation to ensure interoperability between multiple ECUs and reliability in demanding environments. A complete testing solution enables passing strict compliance tests and provides greater confidence in design margins under real-world conditions.

Key features

- **Test Time:** Fully automated with setup wizard, to perform compliance testing as per the Automotive Ethernet 1000BASE-T1 (802.3bp™) and 100BASE-T1 (802.3bw™) standards. The software automatically configures equipments as per test requirement which reduces overall test time.
- **Test Coverage:** Automotive Ethernet solution for 100BASE-T1 and 1000BASE-T1 is designed as per IEEE and Open Alliance specification. The Test coverage is as per OPEN Alliance TC8 ECU test.
- **Validation and Debug:** Supporting tools, such as advanced jitter analysis, help to catch problems before compliance testing, or in the event of a failure.
- **Signal Qualification:** In addition to compliance testing, automated tests and advanced jitter analysis tools are provided for testing your DUT under different environmental conditions.
- **Comprehensive Report:** Automated reporting with Pass/Fail screenshot of the waveform.
- **Measurement Accuracy:** The 5/6 Series MSO oscilloscope provides accurate and repeatable results with a 12-bit vertical resolution at the sampling rate of 3.125 Gs/s (5 Series MSO) and 12.5 Gs/s (6 Series MSO).
- **Return Loss Measurements:** The 100/1000BASE-T1 specification defines Return Loss measurement that requires a Vector Network Analyzer (VNA). A patented measurement approach in the Tektronix Automotive Ethernet Test Solution software allows the designer to perform return loss measurement using an oscilloscope, reducing the need for additional test equipment.
- **ECU Clock Access:** The Distortion test requires to access ECU clock which is not possible most of the time. Tektronix unique algorithm software correction method (patent pending) allows user to perform Distortion measurement without connecting clock from ECU. This method is available for 100BASE-T1 and 1000BASE-T1.
- **Performance Verification:** Automotive Ethernet application allows user to run Selected test for multiple times. The report shows pass/fail result of each run to study ECU performance over different run.

Automated Automotive Ethernet compliance testing

Physical layer compliance tests have been defined to ensure interoperability between different designs and hardware vendors. These requirements to perform these tests have been expanded and now cover Automotive Ethernet 1000BASE-T1 (802.3bp™) and 100BASE-T1 (802.3bw™). For electrical signaling, there are specific tests defined for the Physical Media Attachment (PMA), and as part of Group 1, focuses primarily on the transmitter. The 1000BASE-T1 Automotive Ethernet testing requires an oscilloscope with a minimum of 2 GHz bandwidth.

Supported tests for 1000BASE-T1

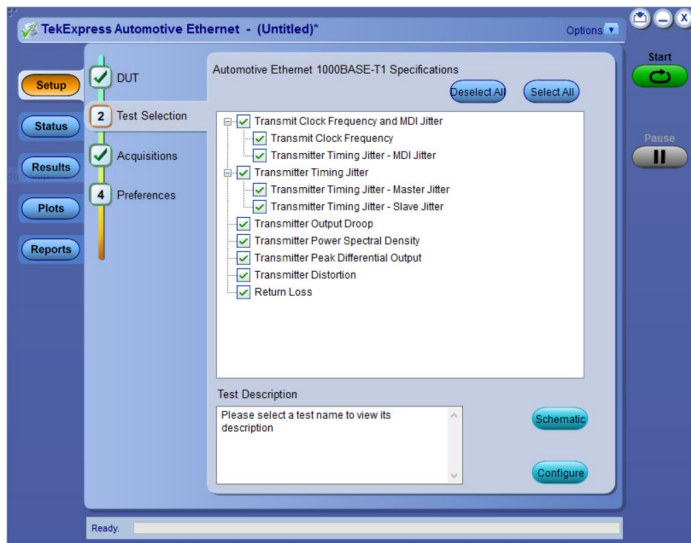
Test Items	Test Name	Test Mode	Instrument
97.5.3.1	Transmitter Output Droop	6	2 GHz oscilloscope
97.5.3.2	Transmitter Distortion	4	2 GHz oscilloscope and AWG
97.5.3.3	Transmitter Timing Jitter (Master/ Slave)	1	2 GHz oscilloscope
97.5.3.4	Transmitter Power Spectral Density (PSD)	5	2 GHz oscilloscope
97.5.3.6	Transmitter Clock Frequency	1	2 GHz oscilloscope
97.5.3.5	Peak Differential Output	5	2 GHz oscilloscope
97.7.2.1	MDI Return Loss	slave	2 GHz oscilloscope and AWG or Tektronix VNA
97.5.3.3	MDI Jitter	2	2 GHz oscilloscope

Supported tests for 100BASE-T1

Test ID	Test Name	Test Mode	Instrument
5.1.1	Transmitter Output Droop	1	1 GHz oscilloscope
5.1.2	Transmitter Distortion	4	1 GHz oscilloscope and AWG/AFG
5.1.3	Transmitter Timing Jitter	2	1 GHz oscilloscope
5.1.4	Transmitter Power Spectral Density (PSD)	5	1 GHz oscilloscope
5.1.5	Transmitter Clock Frequency	2	1 GHz oscilloscope
5.1.6	MDI Return Loss	slave	1 GHz oscilloscope and AWG or Tektronix VNA
5.1.6	Peak Differential Output	5	1 GHz oscilloscope

The Tektronix Automotive Ethernet test solution provides automated compliance testing for 100BASE-T1 (IEEE 802.3bw™) and 1000BASE-T1 (IEEE 802.3bp™) requirements. The automated compliance solution includes test software that runs on a 1 GHz or greater Windows 10 OS Tektronix oscilloscope to perform all physical layer (PHY) transmitter compliance tests.

The compliance software allows for complete or selective testing of any of the transmitter electrical specifications, including complete oscilloscope control of the required setups. Software setup flexibility allows you to perform design validation, margin analysis, and repeatable compliance testing while reducing instrument setup difficulties. Additionally, the software can generate a comprehensive date-stamped test report with pass/fail results, and display waveforms and data plots.

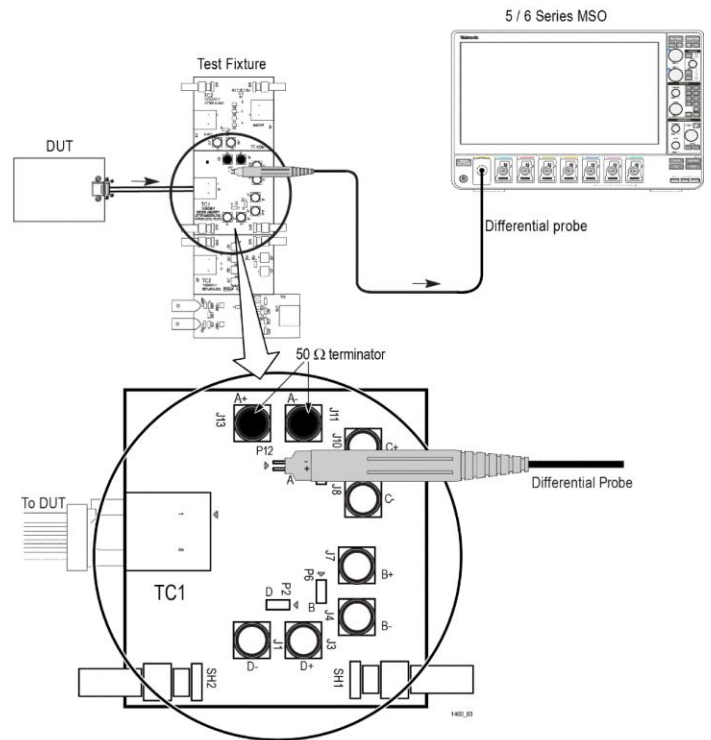


The TekExpress Automotive Ethernet setup menu - 1000BASE-T1

The Automotive Ethernet compliance software allows selection of all or any of the specific tests through a simple Setup menu. Software navigation follows a logical workflow for quick test setups, changes, and review of test results.

Test setup configurations vary greatly from connections to the device under test, probing, test fixtures, calibration, and use of the oscilloscope and signal generator. To help testers correctly set up for a measurement, the Automotive Ethernet software provides setup instructions for each test, with images and reference illustrations, to ensure the correct setup.

Connection diagram for measurements that use TC1 Test fixture



Setup configuration

The Automotive Ethernet compliance software requires a Tektronix 5/6 Series MSO oscilloscope with Option 5-WIN/6-WIN or SUP5-WIN/ SUP6-WIN (Microsoft Windows 10). Since it operates as a Windows application, the software shares the oscilloscope display. For convenience, the recommended configuration is to add a PC display monitor to display the compliance software and test reports separately from the oscilloscope screen.



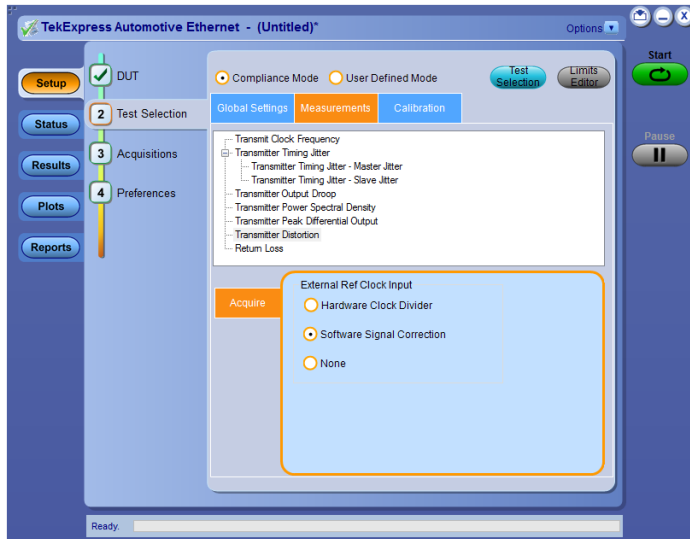
Displaying the compliance software on a separate monitor for easier results analysis

Conducting each test requires configuring the transmitter for specific operating modes using specialized software from the device supplier. Once the transmitter is correctly configured, along with the proper test fixtures and probing, configure the Automotive Ethernet software setup to match the specific test of interest. After test selection, the software guides you to perform all the necessary instrument setups. For the Distortion and Return Loss tests, this can include setup of the signal generator required to conduct these tests.

Distortion (with and without TX_TCLK access):

Distortion test requires the disturber signal and the data acquisition clock of the oscilloscope are frequency locked to the DUT TX_TCLK. Tektronix supports this method using Hardware clock Divider method.

Most ECUs do not have access to TX_TCLK signal. Tektronix has developed unique algorithm for 100BASE-T1 and 1000BASE-T1 which performs software Clock recovery on signal with Disturbance. This method does not need access to DUT clock or hardware locking or Clock divider unit.



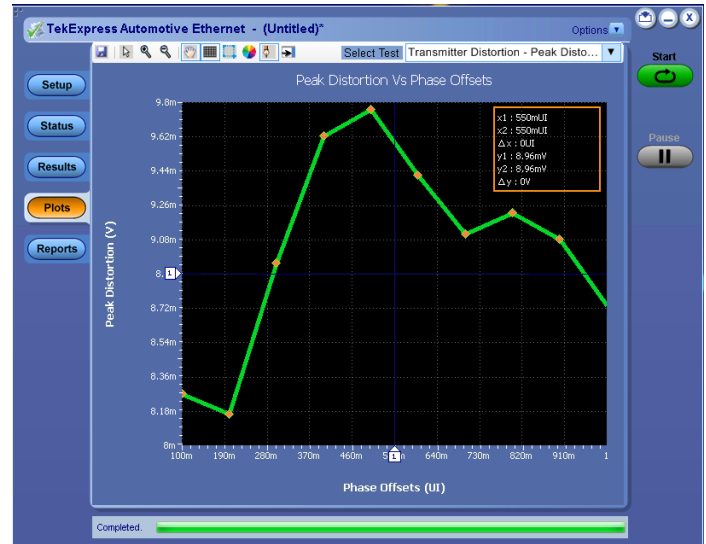
TekExpress Automotive Ethernet provides external reference clock input sources - 1000BASE-T1

Industry defined testing

In order to ensure hardware interoperability, the test software follows the test methods and test limits defined by the OPEN (One-Pair-Ethernet) Alliance Special Interest Group (SIG). The OPEN Alliance test suite documents are strictly followed to ensure that the instrument setups, algorithms, and test outcomes are fully supported.

Distortion measurement

Configured for Test Mode as referred in the table Supported tests for 1000BASE-T1/100BASE-T1, the distortion test measures the maximum allowable transmitter distortion. This test requires the use of a disturbing sine wave signal that is added to the PHY output signal. The peak transmitter distortion is calculated, and the measured values are compared against the compliance test specification.

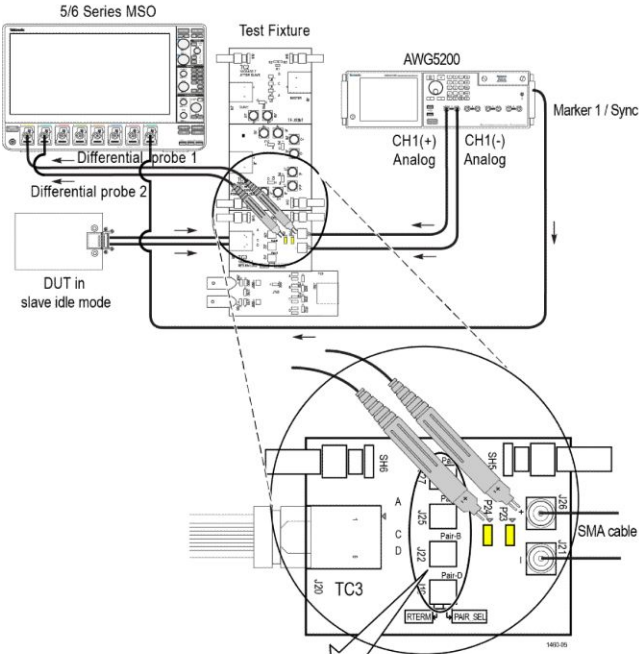


Distortion measurement

Return Loss measurement

The MDI return loss test determines the impedance mismatch from the differential impedance specification of 100 Ω, which will affect hardware interoperability. This test can be performed using a Tektronix VNA, but the Tektronix 5-CMAUTOEN/6-CMAUTOEN solution can perform this test with an oscilloscope using a patented measurement approach that eliminates the need for additional test instruments.

Connection diagram for MDI Return Loss measurement



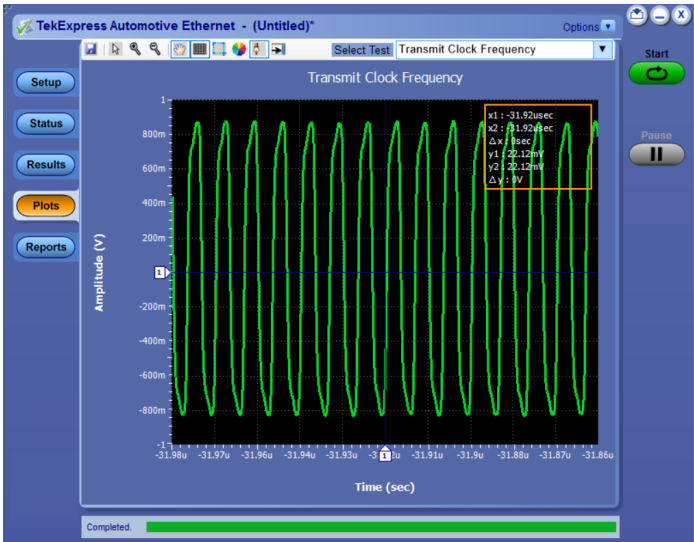
Jumper Connections for testing Lane A, B, C, & D

Lane A	Lane B	Lane C	Lane D
J 27	J 27	J 27	J 27
J 25	J 25	J 25	J 25
J 22	J 22	J 22	J 22
J 19	J 19	J 19	J 19

Setup configuration for Return Loss measurement

Jitter and Transmit Clock Frequency measurements

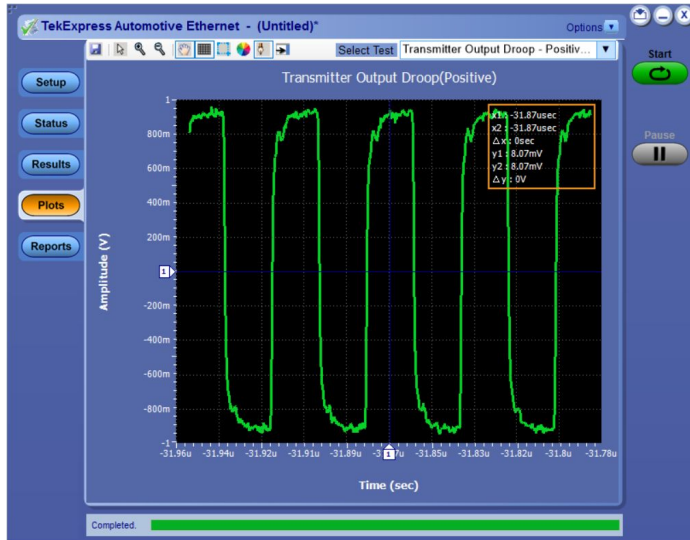
The PHY has a symbol clock that is the output using Test Mode as referred in the table Supported tests for 1000BASE-T1/100BBASE-T1. Separate tests are run to measure the Master (Slave) RMS jitter and the TX clock frequency.



Jitter and Transmit Clock Frequency measurements

Droop measurement

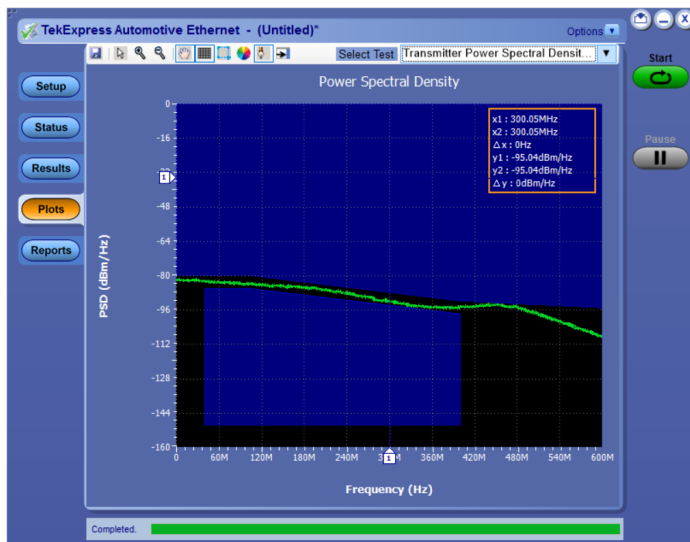
The PHY is configured using Test Mode as referred in the table Supported tests for 1000BASE-T1/100BASE-T1. The droop measurements are performed by determining the positive and negative waveform peak voltages.



Droop measurement - Positive and Negative peak of waveform

Power Spectral Density (PSD) measurement

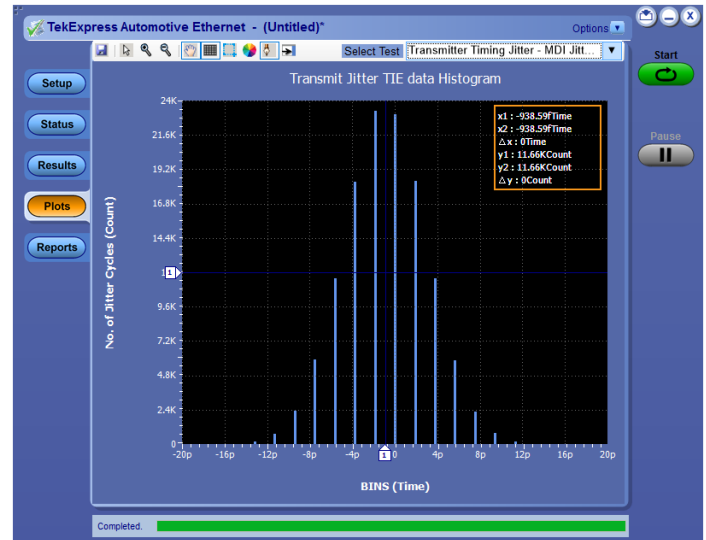
The spectral of an input signal (set to Test Mode as referred in the table Supported tests for 1000BASE-T1/100BASE-T1), is computed using built-in oscilloscope MATH functions. Post processing is done on the signal to arrive at the PSD. The computed PSD is then compared with the specification by using lower and upper masks to arrive at the final result.



Power Spectral Density (PSD) measurement

MDI Jitter measurement

Configure for Test Mode as referred in the table Supported tests for 1000BASE-T1/100BASE-T1, and transmit three {+1} symbols followed by three {-1} symbols continually. Measure jitter of the Data signals.



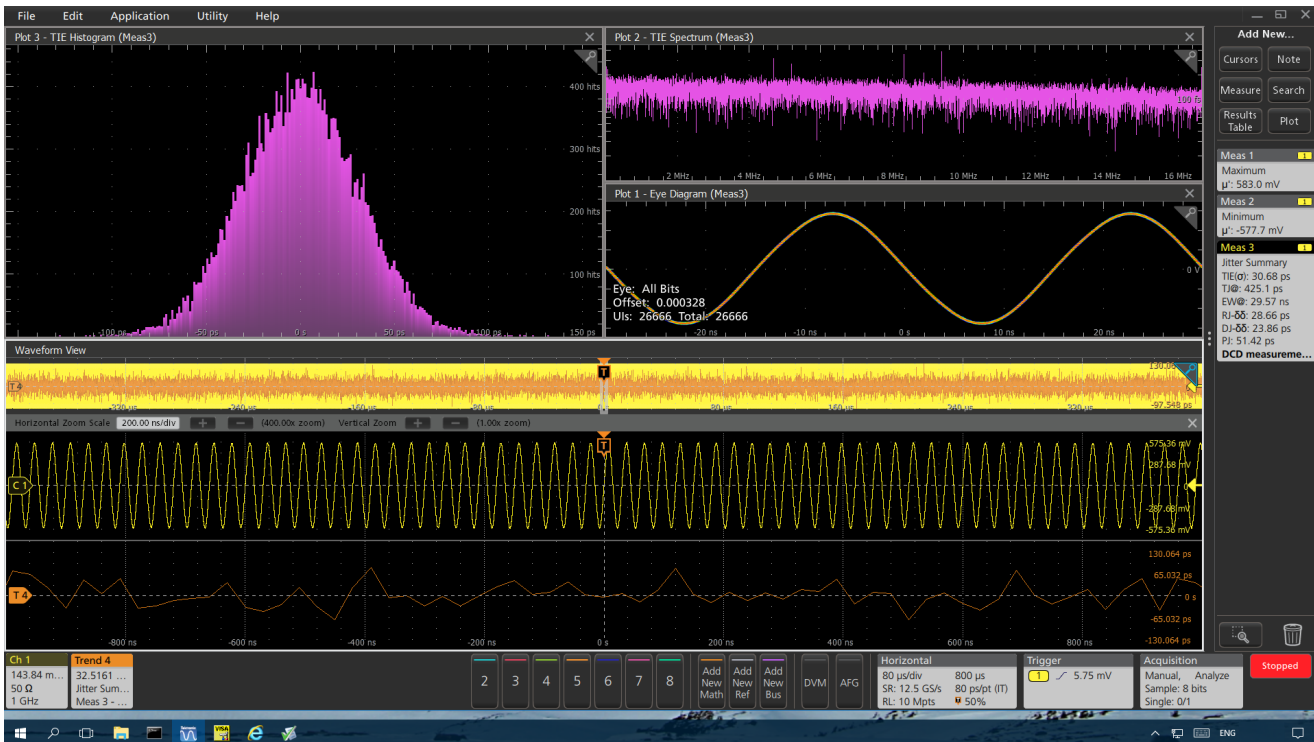
MDI jitter measurement

Validation and debug

Validation and debugging can easily be accomplished early in the design process and ahead of final compliance testing by using the 5/6 Series MSO oscilloscope. The oscilloscope's standard measurement set, along with the optional 5-DJA/6-DJA Advanced Jitter and Timing Analysis software, supports several of the key compliance tests including:

- Clock frequency and transmitter amplitude with histogram and trend analysis
- Positive and negative droop measurements
- Full characterization of jitter performance including TIE and histogram profiles
- Eye diagram analysis of PAM3 signals

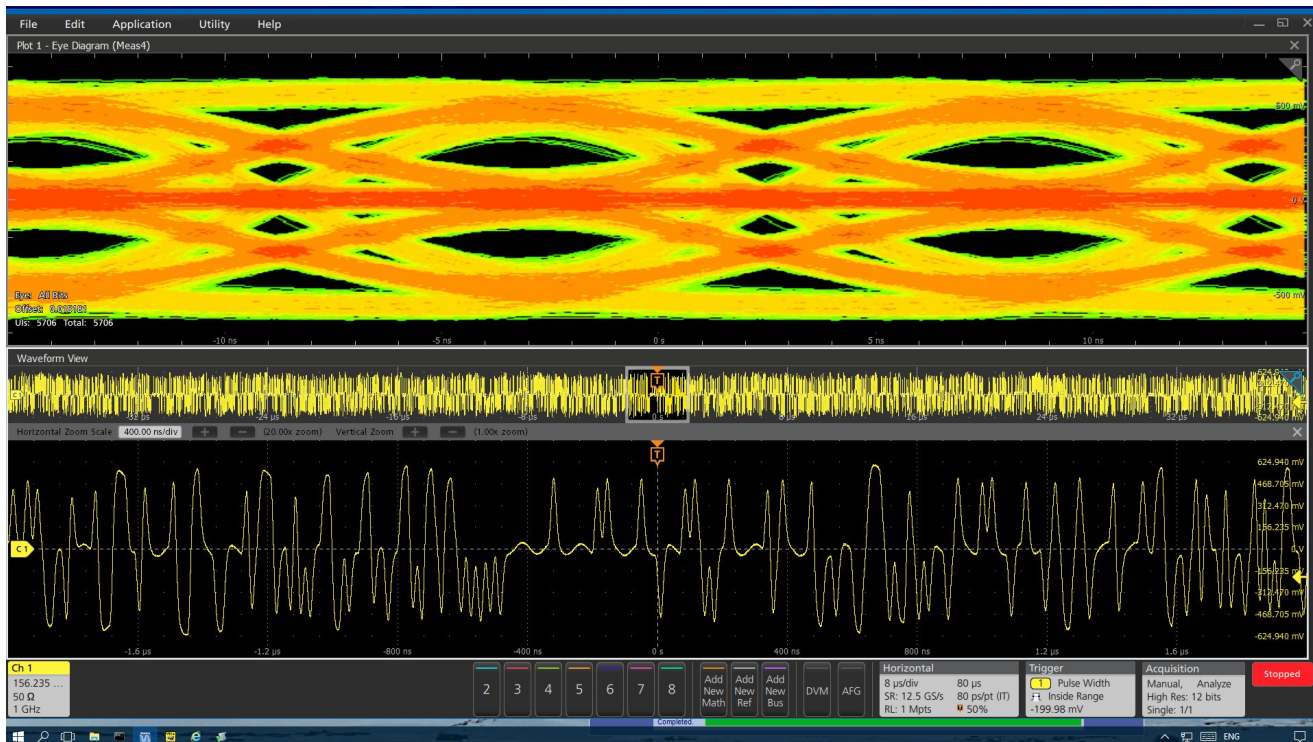
This type of early testing increases the likelihood of passing compliance tests, while allowing more complete characterization and determination of design margins. Master and slave jitter measurements can be particularly challenging given the tight compliance limits and the need to eliminate any possible sources of random or deterministic jitter.



Transmitter Master Jitter analysis showing 30.68 ps Time Interval Error (TIE) value using 5/6 Series MSO measurements and option 5-DJA/6-DJA measurements

Susceptibility to various sources of interference is a concern for reliable network communication between master and slave devices. Confirmation of reliable operation and identification of possible sources of interference or error conditions can be difficult to distinguish in PAM3 signaling.

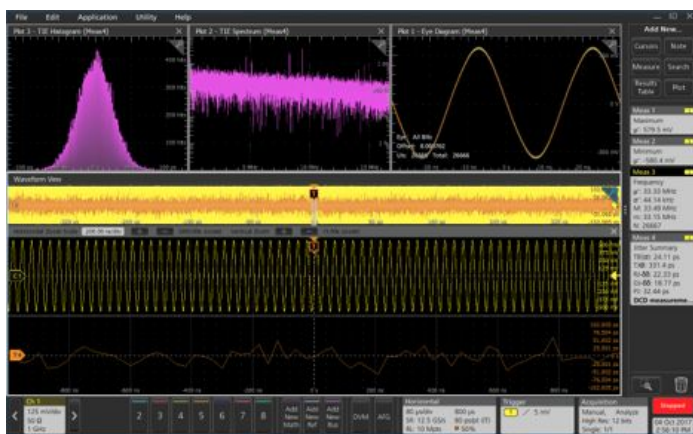
Eye pattern analysis is a proven technique to evaluate long data streams of complex communication signals. Configuring the oscilloscope with the Advanced Jitter and Eye Analysis software (Opt. 5-DJA/6-DJA) provides capabilities to debug and execute measurements of jitter, timing, and eye diagrams completely.



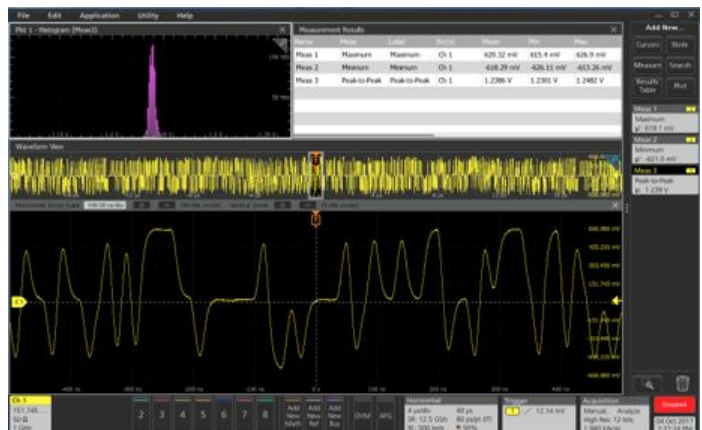
Transmitter Master Jitter analysis showing 30.68 ps Time Interval Error (TIE) value using 5/6 Series MSO measurements and option 5-DJA/6-DJA measurements

Signal Qualification

Automotive designers need to qualify their circuit designs under various conditions such as temperature, voltage, and vibration. Apart from compliance, designers need to qualify the design under various conditions. The 5-DJA/6-DJA Advance Jitter and Timing Analysis software allows designers to configure 1000BASE-T1/100BASE-T1 measurements and run them under different environmental conditions. Designers can integrate the measurement in their automation environment to run the measurement in a continuous mode.



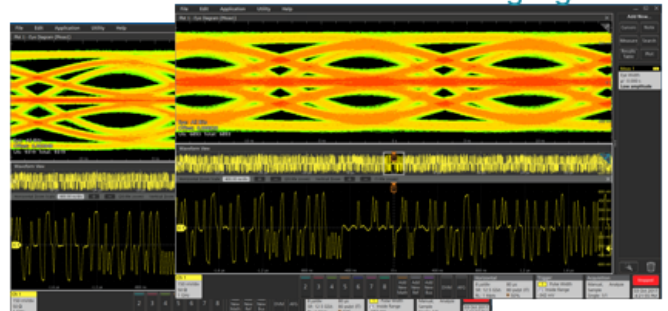
PHY jitter / timing analysis



Differential amplitude profile

Without

With disturbing signal



Distortion signal eye analysis

Pass/fail reports

Creating compliance test documentation is quick and easy in 5-CMAUTOEN/6-CMAUTOEN with a summary report in MHL or PDF format. The software automatically generates a report after tests are completed, and includes Pass/Fail status to quickly analyze the test results. The report also includes test configuration details, waveform plots, oscilloscope displays, and margin analysis, to provide more insights into your design.



Detailed test report showing PSD mask test plot

6 Series MSO oscilloscope



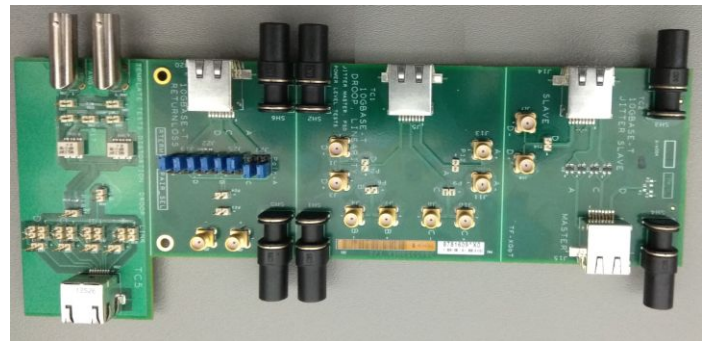
6 Series MSO oscilloscope

With up to 8 GHz analog bandwidth, 25 GS/s sample rates, lowest noise and highest resolution, the 6 Series MSO oscilloscope has the performance you need to capture waveforms with the best possible signal fidelity and resolution for viewing small waveform details of Automotive Ethernet signals.

The 6 Series MSO oscilloscope provides the performance to capture the signals of interest while minimizing the effects of unwanted noise, when you need to capture high-amplitude signals when viewing the smaller signal details. At the heart of the 6 Series MSO oscilloscope are 12-bit analog-to-digital converters (ADCs) that provide 16 times the vertical resolution of traditional 8-bit ADCs.

Probing and test fixtures

Accurate and repeatable compliance testing requires access to the PHY transmitter output and reference clock, and must support calibration and use of disturbing signals. The recommended approach is to use the Tektronix TF-XGbT Ethernet fixture and the TF-BRR-CFD clock divider fixtures. These fixtures can support all test setups while providing convenient test points for probing.



TF-XGbT Ethernet fixture

For direct probing of a DUT, use a differential probe with a bandwidth of ≥ 2 GHz. The Tektronix TDP3500 is the recommended differential probe for 1000BASE-T1 testing.

Ordering information

Measurement names and hardware

Measurements	Required hardware
Transmitter output droop Transmitter timing Jitter Transmitter clock frequency MDI Jitter Differential Output Transmitter power spectral density	5/6 Series MSO with one probe
Transmitter distortion	AFG3152C or AWG5200
Return Loss	100BASE-T1: AFG3152C and two probes or TTR503 1000BASE-T1: AWG5200 and two probes or TTR503

Required software	Option 5-CMAUTOEN/6-CMAUTOEN or SUP5-CMAUTOEN/SUP6-CMAUTOEN (TekExpress Automotive Ethernet compliance)
Required hardware	1000BASE-T1 5 Series MSO oscilloscope (2 GHz option 5-BW-2000) or 6 Series MSO oscilloscope with minimum bandwidth of 2 GHz (Option 6-BW-2500, 6-BW-4000, 6-BW-6000, 6-BW-8000) 100BASE-T1 5 Series MSO oscilloscope (1 GHz option 5-BW-1000 or 2 GHz option 5-BW-2000) or 6 Series MSO oscilloscope with minimum bandwidth of 1 GHz (Option 6-BW-1000, 6-BW-2500, 6-BW-4000, 6-BW-6000, 6-BW-8000) Option 5-WIN/6-WIN or SUP5-WIN/SUP6-WIN (removable SSD with Microsoft Windows 10 operating system)
Recommended options	Option 5-DJA/6-DJA or SUP5-DJA/SUP6-DJA (adds Advanced Jitter and Eye Analysis measurements) Option 5-RL-125M/6-RL-125M or SUP5-RL-125M/SUP6-RL-125M (adds 125 M record length) Option 5-SRAUTO/6-SRAUTO or SUP5-SRAUTO/SUP6-SRAUTO (adds CAN, CAN FD, LIN, FlexRay serial bus trigger and decode) Option 5-SRAUTOSEN/6-SRAUTOSEN or SUP5-SRAUTOSEN/SUP6-SRAUTOSEN for SENT Protocol trigger and decoder Option 5-SREMBD/6-SREMBD or SUP5-SREMBD/SUP6-SREMBD (adds I ² C, SPI serial bus trigger and decode)
Probing	Recommended (two required): 1000BASE-T1 TDP3500 differential probes and 100BASE-T1 TDP1500 or TDP3500 differential probes Supported: TDP7704/7706/7708 probe with P77C292MM adapter (not supported for Return loss and Distortion test), P6247 or P6248 (requires use of TPA-BNC adapter)
Signal sources (AWG)	Recommended: Tektronix AFG3152C signal source Supported: Tektronix AWG5200 with high amplitude DC coupled output option or AWG70000 signal source (for 1000BASE-T1 Return Loss measurement)
Recommended test fixtures	TF-XGbt Test Fixture TF-BRR-CFD clock frequency divider (Required for Hardware clock for Distortion measurement)
Recommended extras	External PC monitor Two pairs of 50 Ω high-quality SMA or coaxial cables (four cables total) for use with AFG or AWG signal sources; all cables must be the same length Two 50 Ω high-quality coaxial cables for use with clock divider outputs; both cables must be of the same length One 50 Ω high-quality SMA cable for the clock divider input One 50 Ω high-quality coaxial cable for the AFG or AWG signal source, for marker output



Tektronix is registered to ISO 9001 and ISO 14001 by SRI Quality System Registrar.



Product(s) complies with IEEE Standard 488.1-1987, RS-232-C, and with Tektronix Standard Codes and Formats.



Product Area Assessed: The planning, design/development and manufacture of electronic Test and Measurement instruments.

ASEAN / Australasia (65) 6356 3900
Belgium 00800 2255 4835*
Central East Europe and the Baltics +41 52 675 3777
Finland +41 52 675 3777
Hong Kong 400 820 5835
Japan 81 (3) 6714 3086
Middle East, Asia, and North Africa +41 52 675 3777
People's Republic of China 400 820 5835
Republic of Korea +822 6917 5084, 822 6917 5080
Spain 00800 2255 4835*
Taiwan 886 (2) 2656 6688

Austria 00800 2255 4835*
Brazil +55 (11) 3759 7627
Central Europe & Greece +41 52 675 3777
France 00800 2255 4835*
India 000 800 650 1835
Luxembourg +41 52 675 3777
The Netherlands 00800 2255 4835*
Poland +41 52 675 3777
Russia & CIS +7 (495) 6647564
Sweden 00800 2255 4835*
United Kingdom & Ireland 00800 2255 4835*

Balkans, Israel, South Africa and other ISE Countries +41 52 675 3777
Canada 1 800 833 9200
Denmark +45 80 88 1401
Germany 00800 2255 4835*
Italy 00800 2255 4835*
Mexico, Central/South America & Caribbean 52 (55) 56 04 50 90
Norway 800 16098
Portugal 80 08 12370
South Africa +41 52 675 3777
Switzerland 00800 2255 4835*
USA 1 800 833 9200

* European toll-free number. If not accessible, call: +41 52 675 3777

For Further Information. Tektronix maintains a comprehensive, constantly expanding collection of application notes, technical briefs and other resources to help engineers working on the cutting edge of technology. Please visit www.tek.com.

Copyright © Tektronix, Inc. All rights reserved. Tektronix products are covered by U.S. and foreign patents, issued and pending. Information in this publication supersedes that in all previously published material. Specification and price change privileges reserved. TEKTRONIX and TEK are registered trademarks of Tektronix, Inc. All other trade names referenced are the service marks, trademarks, or registered trademarks of their respective companies.



19 Feb 2019 61W-61408-3

