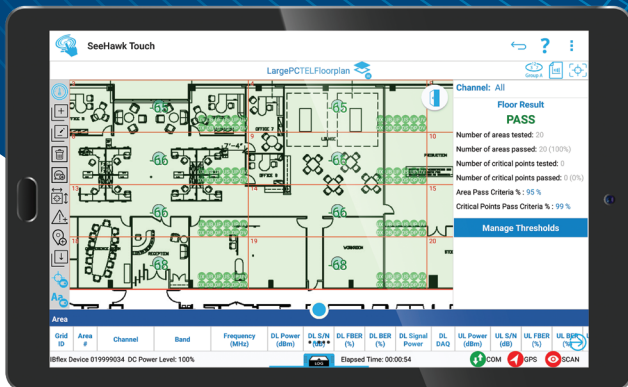


SeeHawk® Touch

NETWORK TESTING SOFTWARE



Intuitive Wireless Network Testing and Reporting Software on an Android™ Tablet

Streamline testing of cellular, WiFi, and critical communications networks with this intuitive data collection and reporting software for use with PCTEL® scanning receivers. Ideal for in-building walk testing using path-based or grid-based methods, it also offers easy-to-use tools for outdoor testing, network commissioning, and troubleshooting.



SeeHawk Touch

PRODUCT FEATURES

- Access to advanced PCTEL® scanning receiver features such as 4G/5G Dynamic Spectrum Sharing (DSS), Layer 3 messages, and LTE MIMO measurements
- Simultaneous data collection across multiple bands and technologies, including cellular, WiFi, public safety, and private radio
- Automated critical communications network testing and reporting
- Easy-to-use troubleshooting and equipment room testing tools
- Integration with post-processing tools for easy data analysis
- OpenStreetMaps® support

HBflex™ and IBflex® scanning receivers connect via Bluetooth® or USB. MXflex® and other scanners connect via USB.

APPLICATIONS

- 5G network deployment and optimization
- Indoor/outdoor walk testing
- Drive testing
- Troubleshooting and optimization
- DAS, BDA, and small cell commissioning

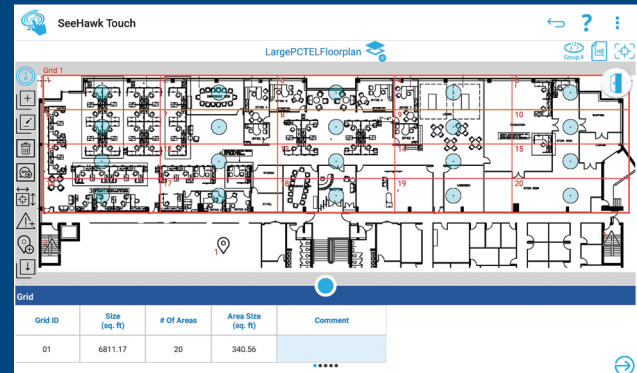
“We did the coverage testing in about 25% of the time planned.”

– Jason Chambers,
Day Wireless Area
Service Manager

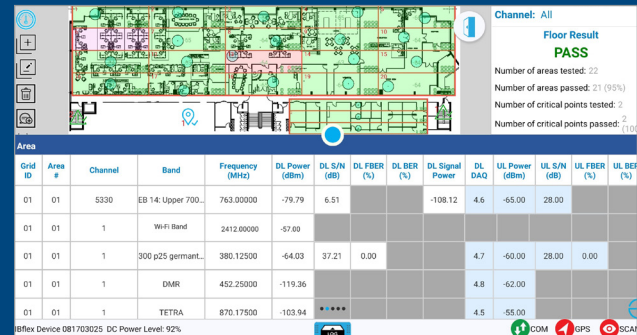


GRID-BASED TESTING AND REPORTING

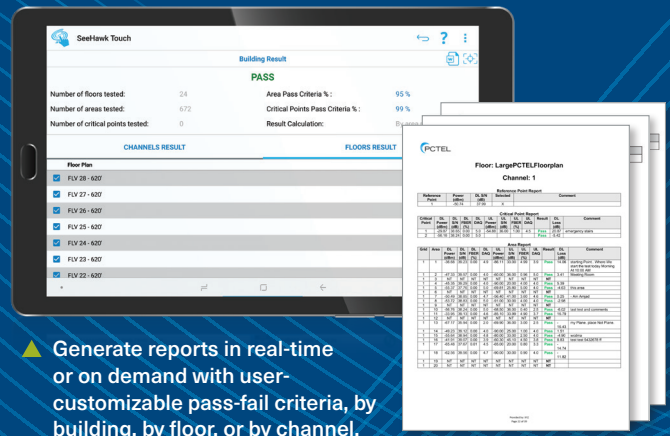
for Critical Communications, Cellular, and WiFi Networks



▲ Automatically identify test locations with easy-to-use grid creation tools that rotate to fit your floorplans.

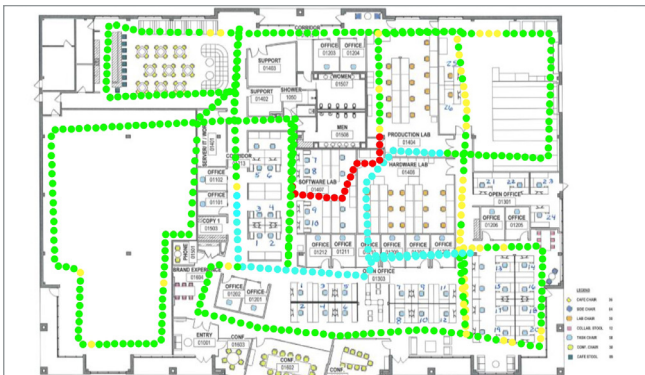


▲ Test coverage, signal quality and noise floor across all channels, bands and technologies in a single tap.

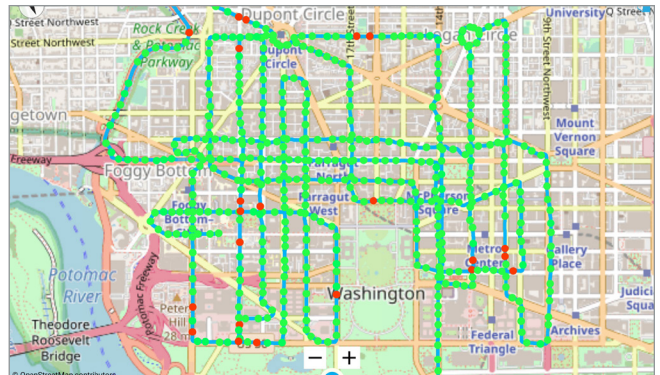


▲ Generate reports in real-time or on demand with user-customizable pass-fail criteria, by building, by floor, or by channel.

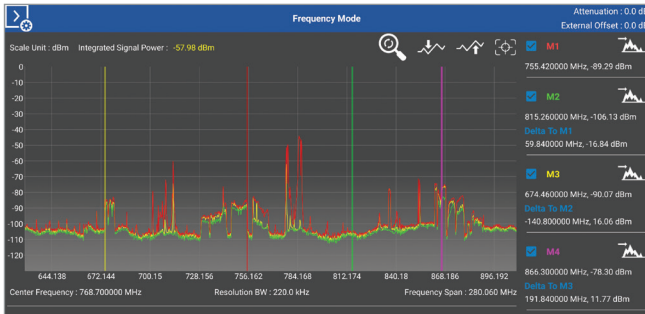
Efficient In-Building and Outdoor Testing



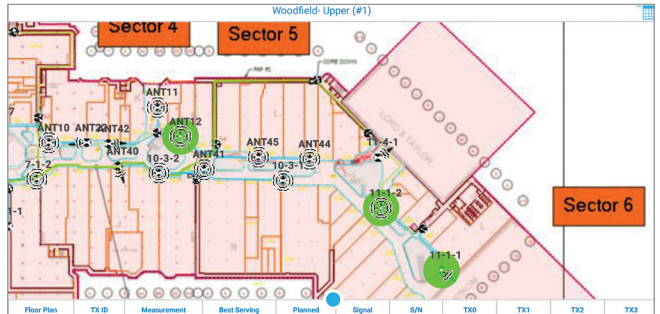
▲ Walk Testing



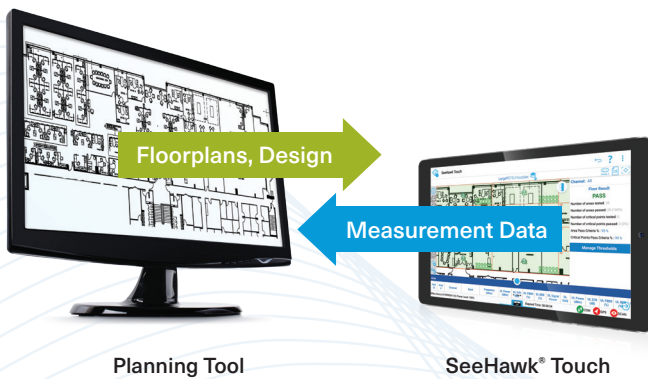
▲ Drive Testing



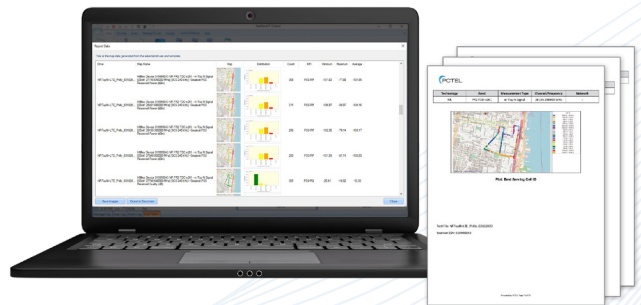
▲ Spectrum Analysis & Equipment Room Testing



▲ Antenna Verification Testing



▲ Planning tool integration enables you to easily import floor plans and export test data.



▲ View drive test and walk test data in SeeHawk® Collect for detailed playback and automated reporting.

“We are now able to test a site in hours instead of days by collecting data on all of the operator’s frequencies and technologies at once. The SeeHawk Touch software’s Antenna Verification Testing feature has drastically reduced our troubleshooting time and helped us to reduce customer complaints. We are also leveraging PCTEL’s solutions for our 5G model tuning, planning, and optimization.”

– *Muhannad AlAbweh, VP Solution Engineering & Services
EEAA Infovista*



Solving Complex Wireless Challenges

PCTEL is a leading global provider of wireless technology, including purpose-built antenna systems, Industrial IoT devices, and test and measurement solutions. Trusted by our customers for over 25 years, we solve complex wireless challenges to help organizations stay connected, transform, and grow.

For more information on PCTEL's test and measurement solutions, visit

> pctel.com/test-measurement



PCTEL, Inc.

T: +1 301 515 0036 | pctel.com | NASDAQ: PCTI

Specifications subject to change without notice. PCTEL®, SeeHawk®, IBflex®, HBflex™, and MXflex® are trademarks or registered trademarks of PCTEL, Inc. Android™ is a trademark of Google Inc. Bluetooth® is a registered trademark of Bluetooth SIG. OpenStreetMaps is a trademark of the OpenStreetMap Foundation. PCTEL and SeeHawk Collect software are not endorsed by or affiliated with the OpenStreetMap Foundation. ©2020 PCTEL, Inc. All rights reserved. Rev F (August 2020)