

# CPC 100

Multi-functional primary test system for substation commissioning and maintenance



# CPC 100 – The revolutionary all-in-one test system

The patented test system replaces numerous individual testing devices and offers new, innovative testing methods. This makes testing with the CPC 100 a time-saving and cost-effective alternative for conventional testing methods. Despite its expansive capabilities, the CPC 100 is very simple to use.

The powerful testing device provides up to 800 A or 2 kV (2 kA or 12 kV with accessories) with up to 5 kVA over a frequency range of 15 Hz to 400 Hz or 400 A<sub>DC</sub>.

Its compact design (29 kg / 64 lbs) makes it easy to transport and ideal for on-site testing.

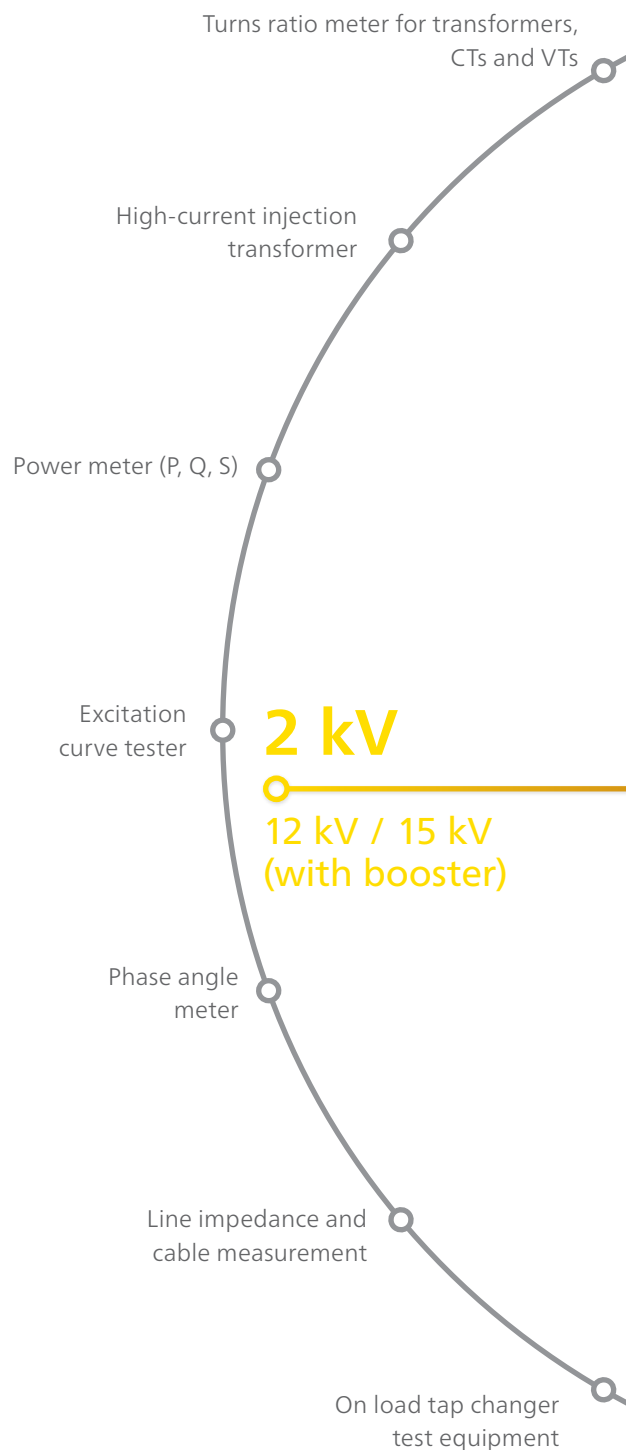
Using the CPC 100, electrical tests on various assets can be performed:

- > Current transformers
- > Voltage transformers
- > Power transformers
- > Power lines
- > High-voltage (HV) cables
- > Grounding systems
- > Rotating machines
- > GIS systems
- > Switchgear and circuit breakers
- > IEC 61850 installations
- > Protection relays

## Quality & Experience

The usage of high-quality components & intensive routine testing in our factory have made the CPC 100 a reliable companion for for our customers worldwide.

The CPC 100 is being improved continuously in close cooperation with our customers. Its new accessories and continuous updates guarantee a future proof concept.



Ground  
resistance meter

Micro ohmmeter  
400 A<sub>DC</sub>

Tester for Rogowski coils and other  
unconventional CTs / VTs (IEC 61850)

**29 kg / 64 lbs**  
single phase wall outlet

Winding resistance meter

Protection relay tester  
(one phase V, I, f)

Multimeter  
(V, I, R, Z, ...)

**400 A<sub>DC</sub>**

**800 A<sub>AC</sub>**

2 kA (with booster)

Step up transformer  
2000 V

Complex impedance meter  
(burdens, cables, lines and  
transformers)

Vector group verification system  
for power transformers

Polarity  
checker

Power / dissipation factor  
measurement set

**15 Hz - 400 Hz**



9 good reasons for one system

## MULTI FUNCTIONAL

- > Test several assets  
(e.g. CT, VT, CB, power transformer)
- > Test different parts of an asset  
(e.g. core, windings, bushing, insulation)
- > Perform numerous tests  
(e.g. ratio, polarity, burden, excitation current)

## VARIABLE FREQUENCY

- > Voltage and current injection with variable frequency
- > Suppression of mains-related interference and disturbances
- > Test results at different frequencies provide more detailed information about an asset
- > Variable frequency testing is necessary for some standardized and advanced diagnostic tests

## TESTING **AND** REPORTING

- > Offline test preparation possibilities  
(time-saving and less error-prone)
- > CPC 100 software automatically guides the user through the test
- > Automated report generation
- > Customizable test reports  
(e.g. different languages, customer logo)

## WEIGHT SIZE

- > Light-weight (29 kg / 64 lbs)
- > Compact design
- > Save costs on:
  - > Transport
  - > Handling
  - > Storage

## CONFORMITY **TO** STANDARDS

- > CPC 100 fulfills highest safety requirements
- > CPC 100 is CE tested
- > CPC 100 tests according to IEEE and IEC standards
- > Measurements with the CPC 100 deliver reliable and repeatable results due to high signal and measurement accuracy

# PRODUCT QUALITY

- > Durable case design for rough environments with test field accuracy
- > Long lifetime due to high quality components
- > Premium quality cables and clamps
- > Comprehensive documentation (e.g. user manual with connection diagrams, software help function, videos, application notes)

# EXPAND ABILITY

- > Further applications can be covered by adding additional hardware accessories
- > By upgrading the software:
  - > Additional tests can be performed
  - > Additional assets can be tested

# SAFETY FIRST

- > Emergency switch-off button
- > Protective Earth conductor connection check
- > Overload detection
- > Multiple isolated outputs
- > Safety key lock
- > Discharge circuit to de-energize DC test objects
- > SAA1 - audible beeper dongle
- > SAA2 - Warning Lamp Set
- > SAA3 - 3-position remote safety switch
- > Grounding box

# AND

# PREPARED FOR THE FUTURE

- > Unconventional assets can be tested (e.g. Rogowski coils, low power CTs)
- > Testing according to IEC 61850-9-2 (e.g. Sample Values, Merging Unit testing)
- > Future applications areas will be covered by newly developed accessories and software

# CPC 100 product family – Extended range of applications

The CPC 100 covers a lot of different applications in and around substations as well as at the manufacturer's production site. Extended by a high number of valuable accessories the application range of the CPC 100 is further expanded. Thus it is the ideal instrument for all major applications in the area of primary testing.

## CPC 100 Applications



Current transformer testing  
(page 8 – 9)



Voltage transformer testing  
(page 10 – 11)



Power and distribution  
transformer diagnosis (page 12 – 13)



Grounding system analysis  
(page 16 – 17)



Switchgear / circuit breaker testing  
(page 22 – 23)



Commissioning protection systems  
(page 24 – 25)



Sampled Values testing  
(page 26 – 27)



Primary test system

**Extended range  
with accessories**



# Current transformer (CT) testing

## Why testing CTs?

Testing current transformers helps to detect installation related and in-service related problems, such as:

### Installation related

- > Transportation damages
- > Wiring errors
- > Manufacturing defects

### In-service related

- > Degradation of accuracy class
- > Shorted turns
- > Magnetized core
- > Burden failures in secondary circuit
- > Insulation material failures

With the CPC 100 many standard electrical tests for CTs can be performed with one single device saving testing time and labor costs. Additionally, unconventional CTs, like Rogowski coils and IEC 61850 integrated systems, can also be tested.

## CT testing with the CPC 100

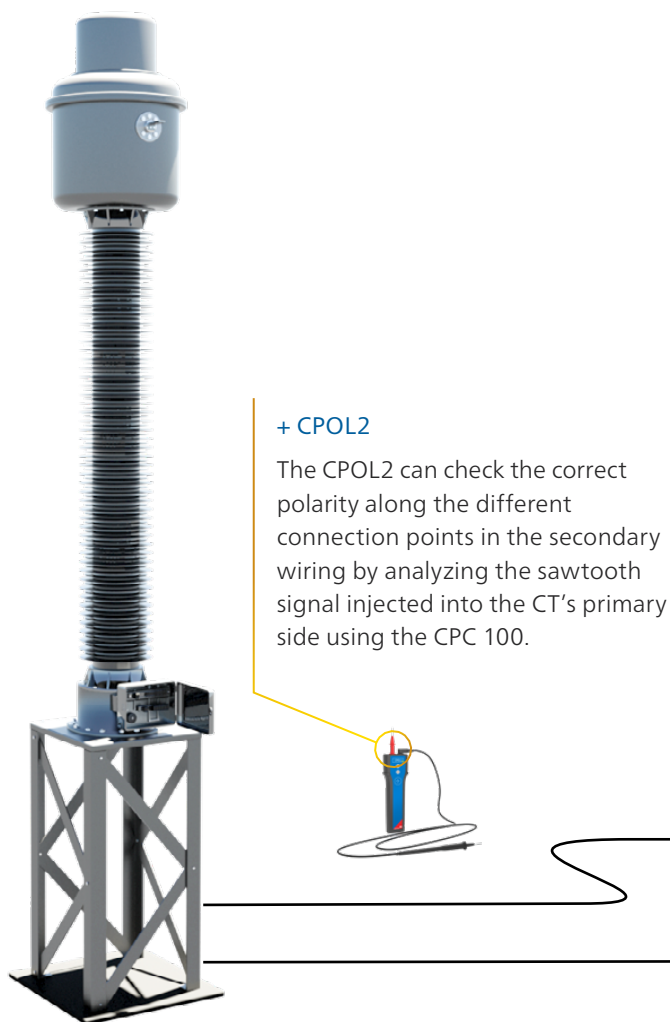
Supplied from a single phase wall outlet, the CPC 100 can generate up to 800 A<sub>AC</sub> (2000 A with CP CB2 current booster) for injecting into the CT's primary side and testing its ratio, polarity and burden.

### Excitation curve measurement

For excitation curve measurement, the CPC 100's output is connected to the secondary terminals of the core. Within an automatic test run, the CPC 100 measures the excitation curve and displays the knee point voltage and knee point current at rated frequency (according to the relevant IEC or IEEE / ANSI standard). The CPC 100 also automatically demagnetizes the CT core after the test.

## Your benefits

- > Multifunctional CT tests
- > Primary injection up to 2 kA
- > Simple wiring test with handheld polarity checker (CPOL2)
- > Voltage withstand test up to 2 kV





### Winding resistance measurement

Using the winding resistance measurement function also allows the user to calculate the accuracy limiting factor (ALF) for protection circuits and the instrument security factor (FS) for metering circuits.

### Power/dissipation factor (PF/DF) measurement

When combined with the CP TD12/15, the CPC 100 is also capable of performing PF/DF measurements. This helps to assess the insulation condition of the CT.

### Current transformer testing

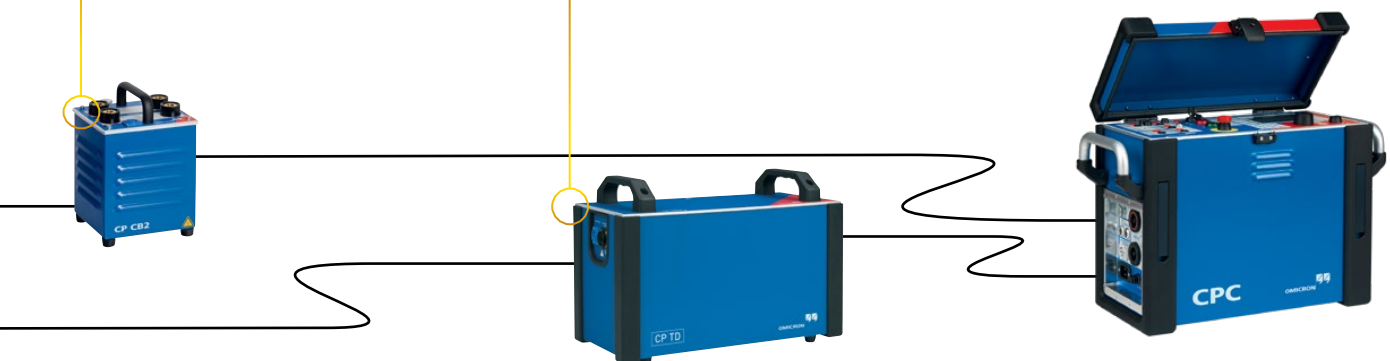
- > CT ratio (with burden)  
up to 800 A or 2000 A with CP CB2, 5 kVA output power
- > CT burden  
up to 6 A<sub>AC</sub> | secondary
- > CT excitation curve  
(knee point) up to 2 kV<sub>AC</sub>
- > Polarity check with CPOL2  
up to 800 A or up to 2000 A with CP CB2
- > Accuracy limiting factor (ALF) test
- > CT ratio with voltage  
up to 130 V<sub>AC</sub> | bushing CTs
- > CT winding resistance  
up to 6 A<sub>DC</sub>
- > CT demagnetisation and remanence
- > CT voltage withstand test  
up to 2 kV<sub>AC</sub>
- > CT ratio Rogowski and CT ratio low power  
up to 800 A or up to 2000 A with CP CB2, 5 kVA output power
- > Power/dissipation factor test  
up to 12kV/15 kV, 300 mA | with CP TD12/15
- > IEC 61850 Sampled Values testing

#### + CP CB2

With the CP CB2 primary injection of current up to 2 kA can be realized for CT testing.

#### + CP TD12/15

For high-voltage CTs, insulation material tests are very important and can be easily done with the CP TD12/15 accessory.



# Voltage transformer (VT) / potential transformer testing

## Why testing VTs?

The majority of VT failures occur due to electrical stresses or manufacturing and installation errors. Typically electrical stresses are caused by:

- > Thunderstorms
- > Ferro-resonances effects
- > Over-voltages

Especially in high-voltage and extra high-voltage installations supervision of the VT insulation system is important to ensure that its dielectric characteristics have not degraded over time.

In case of (re-)commissioning of substations VT circuits should also be checked. Verifying the VT's nameplate data helps to identify damages of the VT or wrong connections.

## VT testing with the CPC 100

With a voltage output of up to 2000 V<sub>AC</sub> the CPC 100 can be used to test VT ratio, polarity and burden.

By injecting voltage into the primary side, ratio can be measured. Thereby the phase angles of high-voltage output and voltage measurement input are also measured. Thus the correct VT polarity can be verified.

Applying voltage to the secondary VT circuits and measuring the load current in amplitude and phase allows the actual burden to be measured, ensuring that it is within the VT's specification data.

## Your benefits

- > Ratio testing from 15 Hz – 400 Hz
- > Multi-functional VT testing
- > Simple wiring check with handheld polarity checker (CPOL2)



## Disturbance-free measurement

The VT's secondary signal may be difficult to measure if it is small in amplitude – especially if neighboring parts of the substation are in operation. In case of strong disturbances, the user can select a frequency different to that of the power system and utilizes the “frequency selective measurement” function. Thus only the VT's output signal with this particular frequency is measured while all other signals are filtered out.

## Voltage/potential transformer testing

- > VT ratio  
up to 2 kV<sub>AC</sub> | polarity and burden
- > VT burden  
up to 130 V<sub>AC</sub> | secondary
- > VT secondary voltage withstand test  
up to 2 kV<sub>AC</sub>
- > Polarity check with CPOL2  
up to 2 kV<sub>AC</sub>
- > VT electronics  
up to 2 kV<sub>AC</sub>
- > IEC 61850 Sampled Values testing
- > Power/dissipation factor test  
up to 12 kV/15kV, 300 mA | with CP TD12/15

### + CPOL2

The CPOL2 can check the correct polarity along the different connection points in the secondary wiring by analyzing the sawtooth signal injected into the VT's primary side using the CPC 100.

### + CP TD12/15

For high-voltage VTs, insulation material tests are very important and can be easily done with the CP TD12/15 accessory.



# Power transformer testing

## Testing power transformers – Most common electrical tests with one device

Testing to assess the health of power transformers and to diagnose problems is of utmost importance to ensure the long-term and safe operation of these very expensive power assets.

With the CPC 100 power transformers and their ancillary components can be tested:

- > Windings
- > Tap changer
- > Bushings
- > Insulation
- > Core
- > Connection leads
- > Surge arrestors

## Winding resistance measurement

The CPC 100 provides an easy and accurate (4-wire connection) winding resistance measurement. Automatic measurement for tapped windings (by using CP SB1 with the on load tap changer) speeds up the measurement. The CPC 100 automatically discharges the inductive energy, which makes the measurement safe.

## Demagnetisation

After switching off a transformer or after applying DC signals to a transformer, the core remains magnetized. This can cause problems for further diagnostic measurements or can lead to higher inrush currents. By using the CP SB1 switch box the integrated algorithm in the CPC 100 completely demagnetizes the transformer core.

## Ratio & excitation current measurement

For measuring ratio and excitation current, the CPC 100 provides a 2 kV output, delivering 2500 VA. The test voltage is generated digitally and the current is automatically measured within the CPC 100. This makes the measurement highly accurate, easy to set up, fast and safe.

## Your benefits

- > Most common power transformer tests with one device
- > Fully automated testing with switchbox CP SB1
- > Advanced tap changer diagnostics using OLTC scan (DRM)
- > Effective core demagnetization



## Power/dissipation factor (PF/DF) measurement

For PF/DF measurement on power transformers and bushings, the CPC 100 is combined with the CP TD12/15. Measuring this factor over a broad frequency range – in addition to mains frequency – helps to better assess the insulation condition, for example detect whether the cellulose or the oil is contaminated by moisture.

## Dynamic resistance measurement (DRM)

The DRM can be performed as a supplementary measurement in order to analyze the OLTC's switching process. The CPC 100 + CP SB1 injects a DC current in the same way that it does for static winding resistance measurements with the the addition of recording the dynamic behaviour of the diverter switch. Based on this non-invasive testing method, failures can be detected without opening the OLTC compartment.

## Power transformer testing

- > DC winding resistance up to 100 A<sub>DC</sub>
- > Transformer demagnetization with CP SB1
- > Dynamic load tap changer diagnostics (on load tap changer test) up to 100 A<sub>DC</sub> | optionally with CP SB1
- > Transformer turns ratio (TTR) per tap up to 2 kV<sub>AC</sub> | including polarity and excitation current | IEC 61387-1 support for transformer with unconventional vector groups
- > Automatically determination of the transformer's vector group with CP SB1
- > Leakage reactance / short circuit impedance up to 6 A<sub>AC</sub>
- > Transformer, bushing: power/dissipation factor + insulation capacitance up to 12 kV/15kV, 300 mA | frequency from 15 Hz to 400 Hz | with CP TD12/15
- > Insulating fluids: power/dissipation factor up to 12 kV/15kV, 300 mA | with CP TD12/15 and CP TC12
- > Excitation current per tap up to 12 kV/15kV, 300 mA | with CP TD12/15
- > Frequency response of stray losses (FRSL)
- > Surge arrestors: leakage current and watt losses up to 12 kV/15kV, 300 mA | with CP TD12/15
- > HV source for voltage withstand test up to 15 kVA | with 3 CPCs + TRC1
- > HV source for PD measurements up to 15 kVA | with 3 CPCs + TRC1

### + CP SB1

The switchbox CP SB1 reduces wiring work at power transformers. Thereby, the time needed for testing can be reduced and, at the same time, safety can be significantly increased.

### + TRC1

The triple remote control TRC1 allows three CPCs to be synchronized safely. This allows the CPC 100 to be used as a powerful HV source. Matching transformers are provided in order to match the rated voltage on the LV side.

### + CP TD12/15

Insulation condition assessment of transformers, bushings and insulating fluids (with the CP TC12).



HV-source

# Line impedance measurement

## Line parameters for distance protection

Correct line parameters are crucial for reliable and selective distance protection. The set of parameters contains the positive and the zero sequence impedance ( $Z_1, Z_0$ ) as well as the k-factor ( $k_L, R_E/R_L$  and  $X_E/X_L, k_0$ ).

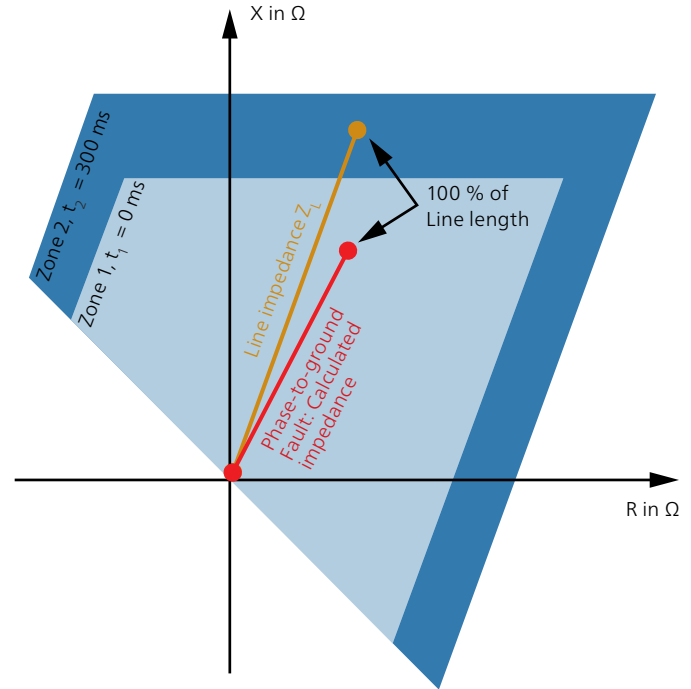
These parameters are often calculated from software tools, which do not provide actual line parameters due to unknown soil properties, such as different soil resistivities, pipelines or other unknown conductors. This leads to under- or overreach of your distance protection relay resulting in outage and loss of grid stability.

## Zone under- and overreach

The most frequent faults on power lines are ground faults. In particular, inaccuracies from software calculation effect this kind of fault. The example on the right shows a zone overreach for a ground fault due to an incorrect k-factor setting. In this case the assumed k-factor is higher than the actual one. Therefore, a ground fault at the remote end of the line is seen incorrectly in the first zone.

## Mutual coupling

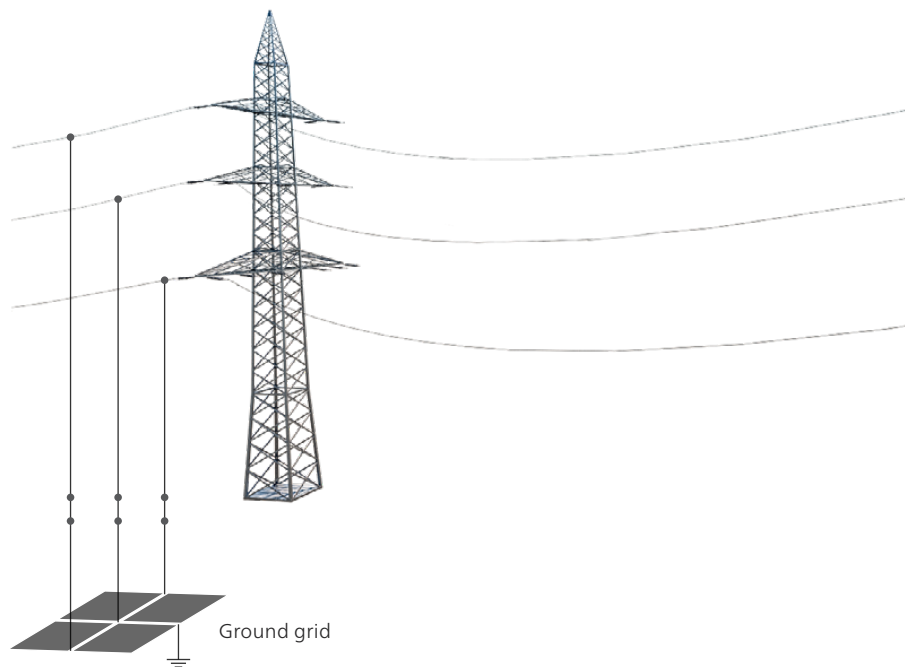
With this unique testing equipment, the mutual coupling impedance between parallel lines can also be determined to consider coupling effects for correct parameterization.



Incorrect k-factor (tendency to overreach)

## Your benefits

- > Accurate distance protection relay settings by performing a line impedance measurement
- > Safe and quick determination of  $Z_1, Z_0$  and k-factors
- > Mutual coupling impedance measurement between parallel lines



## Testing with the CPC 100

The main unit CPC 100 generates the frequency variable test current and measures current and voltage by applying digital filtering for high accuracy. The complex loop impedance is then calculated accordingly.

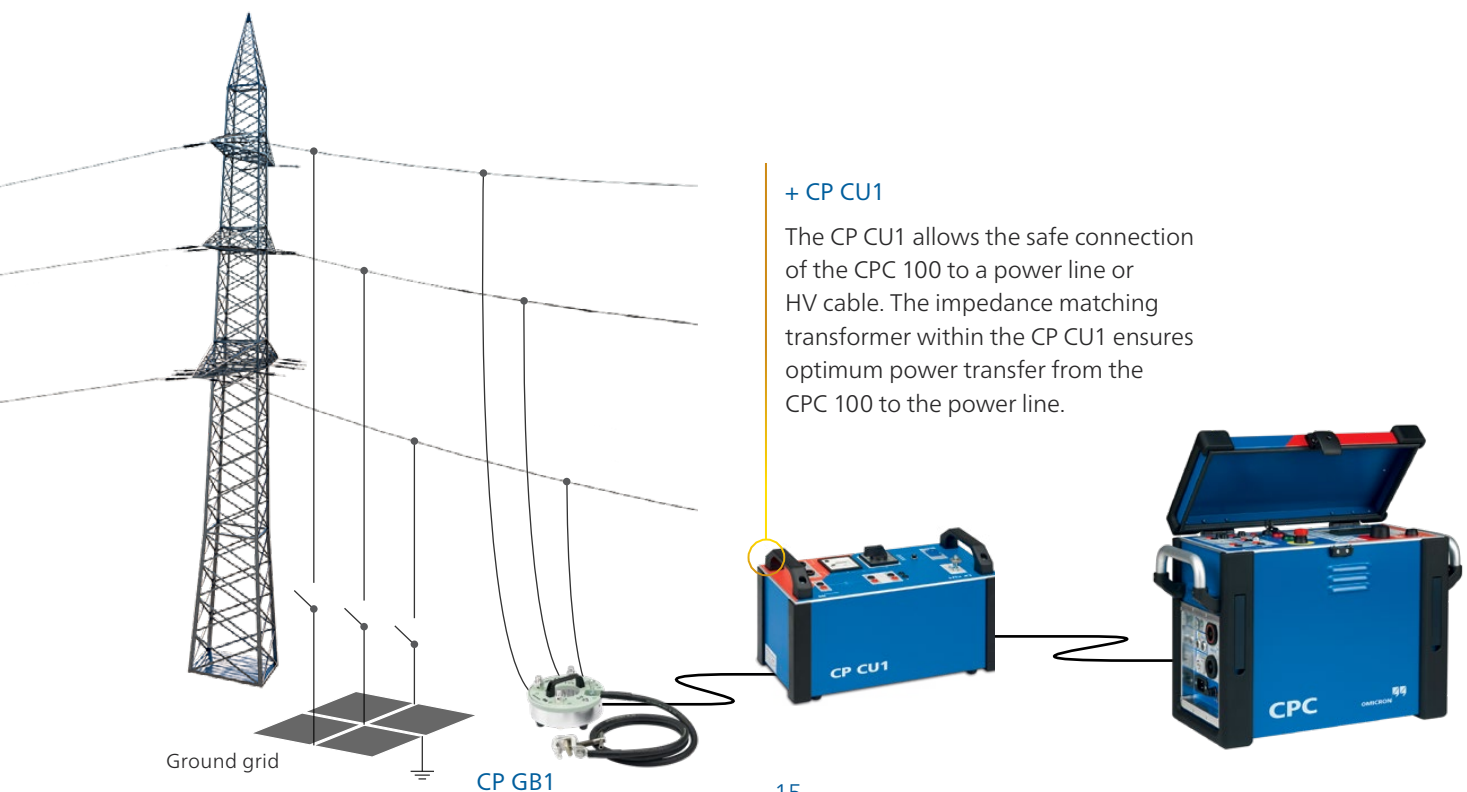
The CP CU1 provides galvanic isolation between the line under test and the CPC 100 as well as impedance matching for short and long lines.

The CP GB1 protects the test equipment and the user from any unexpected overvoltage on the line under test. Furthermore it allows a direct connection to the power line for a convenient execution of the test.

A dedicated test template provides the positive and the zero sequence impedance as well as the k-factor in commonly used formats. Furthermore it shows the actual zone reach for each fault type based on the measured values and relay parameters that are currently being used.

### Cable and transmission line diagnosis

- > Line impedance and k-factor  
up to 100 A | with CP CU1
- > Mutual coupling  
up to 100 A | with CP CU1
- > Positive or zero sequence impedance



# Grounding system testing

## Personnel safety

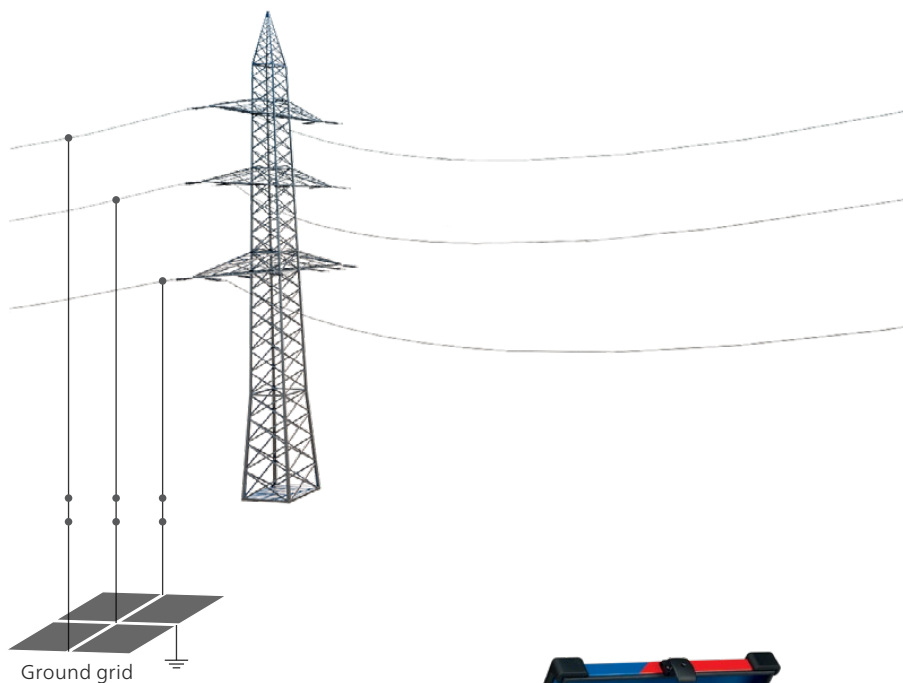
In the event of a ground fault hazardous step and touch voltage can occur inside and outside of a substation. Ground tests prove the effectiveness of grounding systems and guarantee safety of people inside and outside the substation.

A fall-of-potential measurement is usually performed to determine the condition of the entire ground grid. On top of that, step and touch voltages are measured at exposed locations in order to ensure human safety in select areas.

## Fall-of-potential measurement (3-point test)

The fall-of-potential measurement with the CPC 100 is performed according to EN 50522 or IEEE 81.

For the fall-of-potential measurement the voltage between the ground grid and ground electrodes in different distances to the ground grid is measured until reference ground is reached. Dedicated software transforms the test results into a voltage and impedance chart which allows the ground potential rise and the ground impedance to be determined.



## Your benefits

- > Determine true test values by power line injection
- > Simple and accurate step and touch voltage measurements with handheld HGT1 device
- > Reduction factor measurement on ground wires and cable shields





## Step and touch voltage measurement

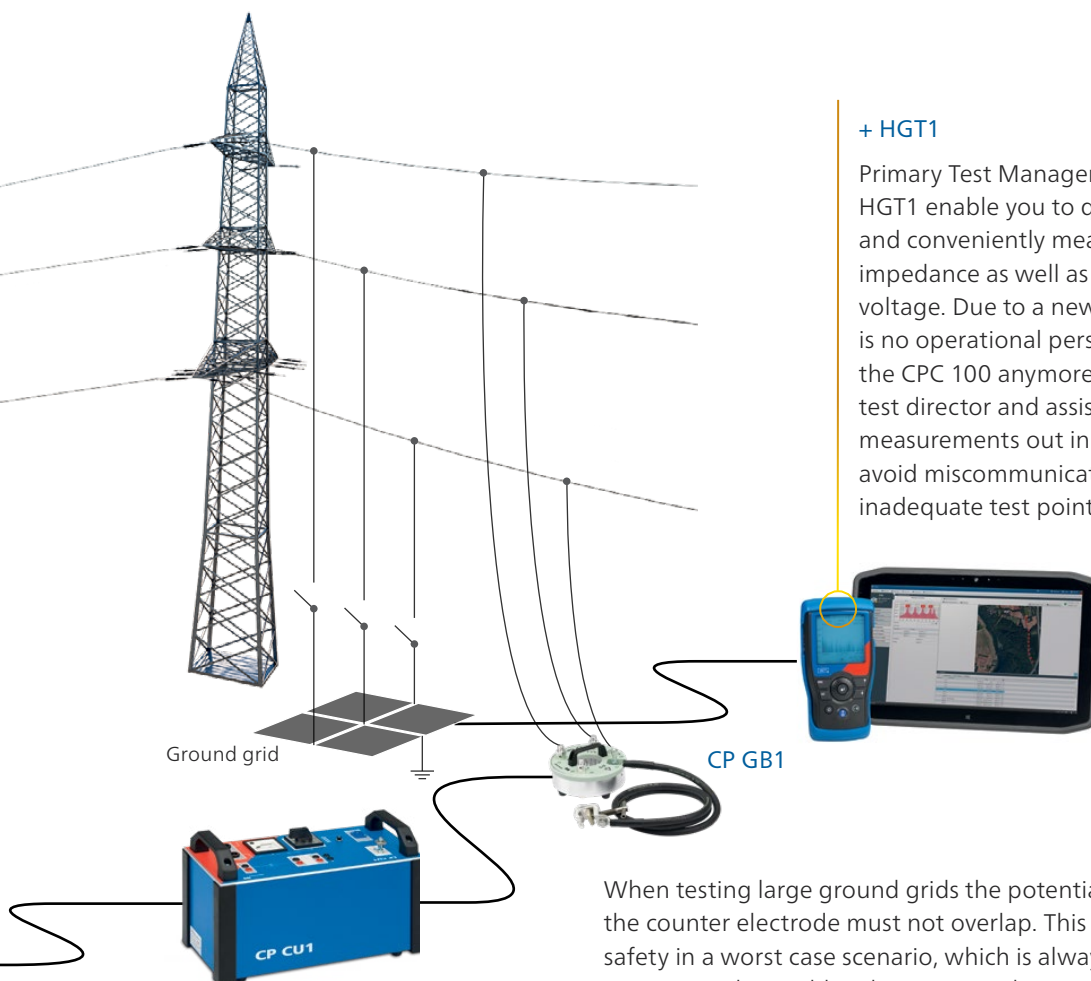
Step and touch voltage measurements according to EN 50522 and IEEE 81 are performed with the HGT1. This handheld device employs frequency selective measurements for effective noise suppression.

Furthermore, tests can be executed quickly and easily since long test cables for connecting to the main device are no longer necessary.

Dedicated test templates assess measured step and touch voltages according to EN 50522 and IEEE 80 automatically.

## Ground system analysis

- > Ground grid impedance for large systems  
up to 100 A | with CP CU1
- > Step and touch voltage  
up to 100 A | with CP CU1 and HGT1
- > Ground grid impedance for small systems  
up to 6 A<sub>AC</sub>
- > Soil resistivity  
up to 6 A<sub>AC</sub>
- > Integrity check of grounding connection  
up to 400 A<sub>DC</sub>
- > Reduction factor / current split factor
- > Measure multiple current paths with Rogowski coil



### + HGT1

Primary Test Manager (PTM) and HGT1 enable you to quickly, simply and conveniently measure ground impedance as well as step and touch voltage. Due to a new approach there is no operational personal required at the CPC 100 anymore. Together, the test director and assistants perform all measurements out in the field in order to avoid miscommunication and selection of inadequate test points.

When testing large ground grids the potential of the ground grid under test and the counter electrode must not overlap. This is done in order to ensure human safety in a worst case scenario, which is always crucial. The CPC 100 + CP CU1 overcomes this problem by injecting the test current into a remote substation via an existing power line.

# Rotating machines diagnosis

## Why test rotating machines?

Rotating machines, such as motors and generators, are highly important components in power generation and industrial applications. Therefore machine reliability and availability are in high demand. Motors and generators are exposed to high thermal, mechanical and electrical stress that influences their reliability and life expectancy.

Premature failure may lead to significant economical losses, due to unexpected outages and possible damage to the asset itself. In order to plan maintenance effectively, it is essential to have accurate condition information about when components need to be repaired or replaced.

A variety of electrical tests can be performed with the CPC 100 over the complete life cycle of machines to increase their reliability, prevent premature failures and to extend reliable service life.

## PF/DF measurement and PF/DF tip-up test

The PF/DF measurement is used as a maintenance tool for entire windings. The portable solution CPC 100 + CP TD15 + CP CR600 allows PF/DF measurements to be carried out at nominal frequency.

The measurement results can be compared with previous measurements, factory acceptance tests or a phase-to-phase comparison can be made. An acceptable PF/DF offers assurance that the insulation condition allows reliable operation.

Furthermore, a parallel partial discharge measurement allows for a more detailed diagnosis of the type of fault. The CPC 100 + CP TD15 can be used as HV source for the partial discharge measurement.

The measurement complies with international standards such as IEC 60894 and IEEE 286.

## DC winding resistance measurement

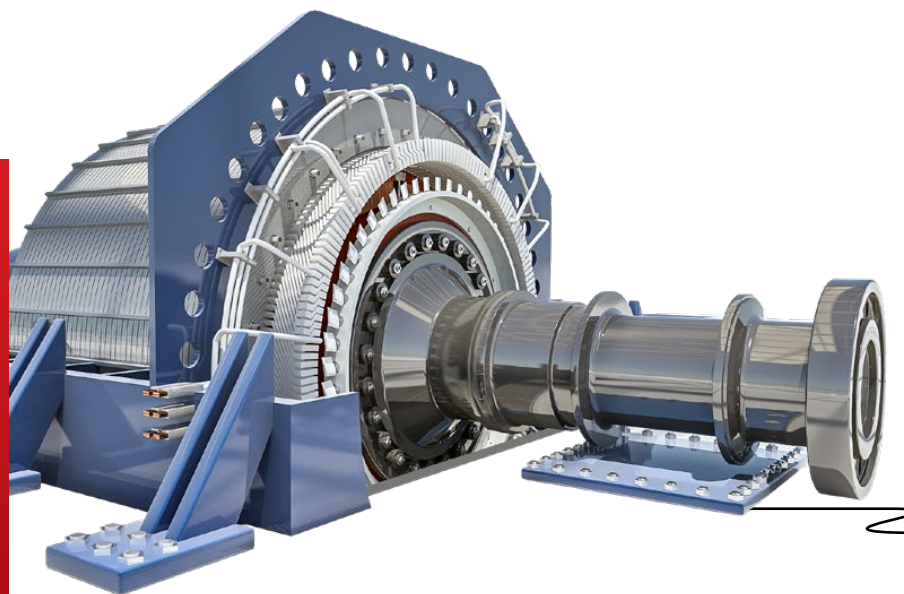
A DC resistance measurement is performed to detect possible contact problems in the stator and rotor winding of a machine.

The CPC 100 offers an integrated micro ohmmeter with a maximum output of 400 A. The 4-wire method is used to detect connection problems in the stator winding (bad soldering contacts) as well as contact problems on the pole connectors of the rotor winding.

Both failures can be the root cause of a local hotspot and potentially damage the machine.

## Your benefits

- > Portable HV source
- > High accurate PF/DF measurement with reference capacitance for maximum usability
- > Defined voltage steps for a combined partial discharge and PF/DF measurement enable reproducible test conditions



## Pole drop test

Mechanical stress in rotor windings cause inter turn faults (short circuits), which can lead to a magnetic imbalance. This causes higher shaft vibrations which puts more stress on the bearings and can potentially damage them. The CPC 100 provides the AC source and the accurate voltage inputs needed to perform the pole drop test.

## Electromagnetic imperfection testing

This test (also known as stray flux measurement) is performed to detect stator core interlamination faults that can cause overheating and damage during machine operation. The stator core is energized with a small percentage of nominal flux and the stray flux on the surface is measured along the slots. Faults are indicated by an increase of stray flux in amplitude and/or a change in the phase.

## Rotating machines diagnosis

- > Power/dissipation factor tip-up test at 50 Hz / 60 Hz  
up to 15 kV | 5 A | with CP TD15 and CP CR600
- > Power/dissipation factor test with variable frequency  
up to 15 kV | frequency from 15 Hz to 400 Hz | with CP TD15
- > HV source for testing rotating machines  
up to 15 kV | max. 2  $\mu$ F | with CP TD15 and CP CR600
- > DC winding resistance measurement  
up to 400 A DC and 5 kVA down to the microohm range.
- > Pole drop test
- > Electromagnetic imperfection testing
- > Stator core measurement  
Semi-automatic scanning of the stator core, measurement and excitation in one solution

### + CP CR600

The CP CR600 compensator reactor enables the CP TD15 to be used with test objects with large capacitance such as large motors and generators.

### + CP TD15

Insulation condition assessment of motors and generators. The CPC 100 + CP TD15 can provide up to 15 kV. It can be used as HV source and PF/DF measurement system at the same time.



# Gas-insulated switchgear testing

## Testing gas-insulated switchgear to date

Gas-insulated switchgears (GIS) are compact and are, therefore, used in applications where space is limited. For commissioning of GIS a high-voltage (HV) withstand test is required in accordance with standards (IEC 62271-203).

To date the test voltage needed for a withstand test has been produced by a resonance circuit. This test system consists of an HV test transformer, a coupling capacitor and a power control unit. The HV test transformer and the coupling capacitor have to be connected directly to the GIS.

Weak points of this testing principle:

- > The complete test system is difficult to transport, because it consists of very heavy and large components.
- > It is difficult to use it at test sites with limited space, such as wind turbines.
- > The HV test lead must be connected to, and disconnected from, the GIS system for testing. This normally includes a time-consuming venting and refilling process of the SF<sub>6</sub> gas.

## Innovative GIS testing

With the CPC 100 + CP RC it is possible to perform GIS tests without the need of a big HV transformer. This is possible because the system directly makes use of a specially designed "Power VT" for testing.

This Power VT is an integral part of the GIS and generates the required test voltage. CPC 100 injects power at the LV side of the VT, producing the necessary voltage on the HV side. A direct connection of the measuring system to the integrated VT of the GIS system eliminates the need for draining and refilling any SF<sub>6</sub> gas.

The CPC 100 + CP RC system comprises several small and light-weight components (< 21 kg / 46 lbs) which can be transported by one person. With its modular design GIS tests can even be accomplished at test sites with limited space.

## Your benefits

- > Small and light-weight test system with high output power
- > Testing without gas venting and refilling procedure
- > Automatic frequency tuning for ideal load compensation



## Powerful voltage withstand testing

When combined with the CP RC1, the CPC 100 allows withstand tests with a maximum test voltage of 200 kV to be carried out on GIS systems up to a rated voltage of 123 kV. The CPC 100 + CP RC2 is appropriate for testing GIS systems with a rated voltage of up to 145 kV and a maximum test voltage of 235 kV. This package is supplied with the additional CP AT1 auto-transformer to guarantee the necessary output power of the CPC 100 for higher loads.

## HV source for partial discharge measurements

During production or maintenance, impurities can occur in GIS. These can cause major problems in operation. Therefore, it is recommended to perform a partial discharge measurement during commissioning (acceptance tests). While performing these measurements with our MPD series the CPC 100 + CP RC can be used as the HV source.

## GIS testing

- > Withstand test  
up to 235 kV | max 1.6 nF | with CP RC2
- > HV source for partial discharge measurements  
up to 235 kV | max 1.6 nF | with CP RC2

### + CP CR

With the compensating reactor 4 mH CP CR4 or 6 mH CP CR6 the CP CR compensates the capacitance in a modular fashion.

### + CP TR

The isolation transformer CP TR provides a potential-free output signal and compensates the capacitive load.

### + CP AT1

The auto-transformer CP AT1 allows to connect the mains supply of the CPC 100 to a three-phase 16 A power outlet, and delivers the required power for the test setup.



# Switchgear and circuit breaker testing

## Why test switchgear and circuit breaker?

Switchgear consists of busbars, circuit breakers (CB), disconnectors and earthing switches. There are various connections and contacts within the switchgear. Poorly maintained or damaged contacts can cause arcing, single phasing or even fire which can lead to the total loss of the asset.

Therefore, it is common practice to conduct contact resistance measurements to ensure that the connections have been made with the appropriate contact pressure.

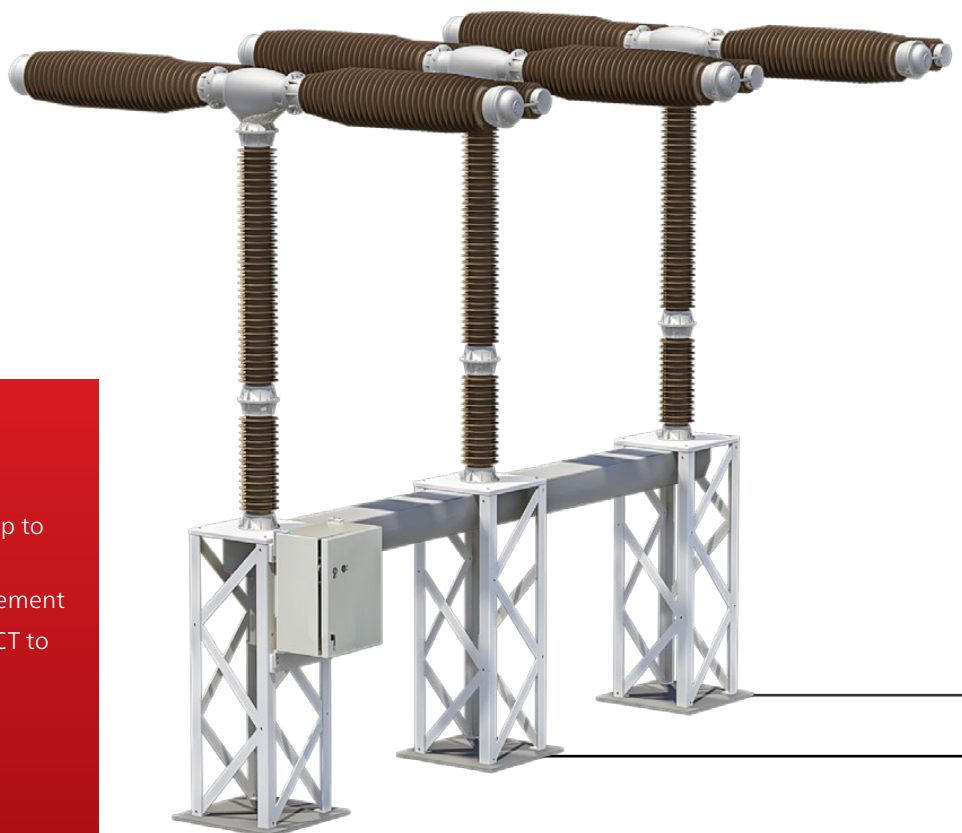
Additionally, the insulation of CBs within the switchgear has to be tested. These assets are frequently exposed to HV stresses, switching currents and very high fault currents, which heat up the circuit breakers and impact on the insulation material.

## Contact resistance measurement

The CPC 100 can measure contact resistance by injecting a current of up to  $400 A_{DC}$  into the contacts and measuring the voltage drop (using the 4-wire method). The resistance value can be compared to the value given by the manufacturer as well as to previous records.

### Your benefits

- > Contact resistance testing with up to 400 A DC
- > Power/dissipation factor measurement
- > Testing of entire chain from the CT to the CB's main contacts



## Insulation testing of circuit breakers

For power/dissipation factor measurements on CBs, the CPC 100 is combined with the CP TD12/15. Measuring this factor over a wide frequency range – in addition to mains frequency – helps to better assess the insulation condition.

## Switchgear / circuit breaker testing

- > Contact resistance  
up to 400 A<sub>DC</sub>
- > Bushing: power/dissipation factor (tan δ)  
+ insulation capacitance  
12 kV/15kV, 300 mA | frequency from 15 Hz to 400 Hz | with CP TD12/15
- > Circuit breaker: power/dissipation factor (tan δ)  
up to 12 kV/15kV, 300 mA | frequency from 15 Hz to 400 Hz | with CP TD12/15
- > Insulating fluids: power/dissipation factor (tan δ)  
up to 12 kV, 300 mA | with CP TD12/15 and CP TC12

### + CP TD12/15

Insulation condition assessment of circuit breakers and insulation fluids (with CP TC12).



### CPC 100

μΩ measurement with the CPC 100's 400 A<sub>DC</sub> capabilities enables accurate contact resistance measurements on circuit breakers.



# Commissioning and trouble shooting of protection systems

## Commissioning protection systems

In order to work properly, protection and control systems have to be correctly integrated into the substation or power plant. Quantities from the primary system are transformed at the VTs and CTs – using their different cores – and so the voltage and current signals must be correctly connected to the protection relays, automation units and meters.

From these protection and control units, the trip signals are routed back to the primary apparatus, for example, the circuit breakers. A fault in any part of this system may result in a system failure – false tripping or a failure to trip.

To prevent such a failure, the system's functionality can be verified by injecting into the primary side of the CT or VT and checking the measured values at the relay or automation unit. Finally, injecting current at the magnitude of a fault should result in the tripping of the circuit breaker, which allows the verification of the complete chain.

## CT & VT performance check

The CPC 100 allows the verification of the ratio and polarity of CTs and VTs – preventing wrong connections, especially in the case of tapped CTs. Injecting current or voltage into individual CTs / VTs and checking the reading at the relay ensures that phases are not mixed up and that the CT and VT ratio setting in the relay is correct.

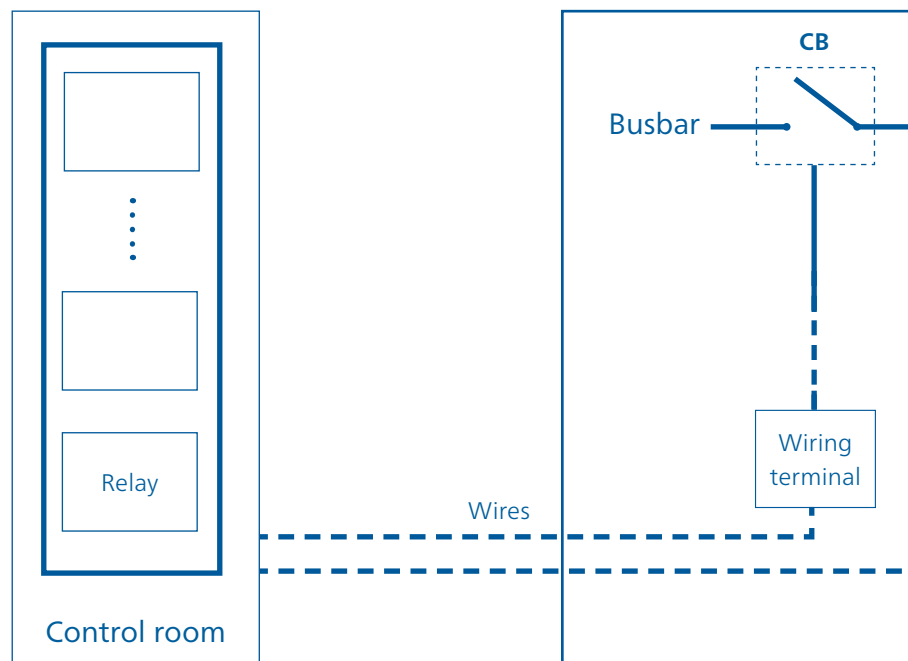
The CPC 100 can also measure the burden on the CTs and VTs and, by determining the CT's excitation curve, it ensures that the protection circuits are connected to the appropriate CT cores.

## Wiring check

The CPC 100 can help to verify that the secondary wiring is correct. By injecting a sawtooth signal into the CT or VT, the operator verifies with a handheld device that the signal has the correct polarity at the connection points of the secondary systems.

### Your benefits

- > Testing of entire chain from the CT to the CB's main contacts
- > Versatile due to high-current and high-voltage outputs
- > Wide range of applications covered





## Timing of CBs with overcurrent elements

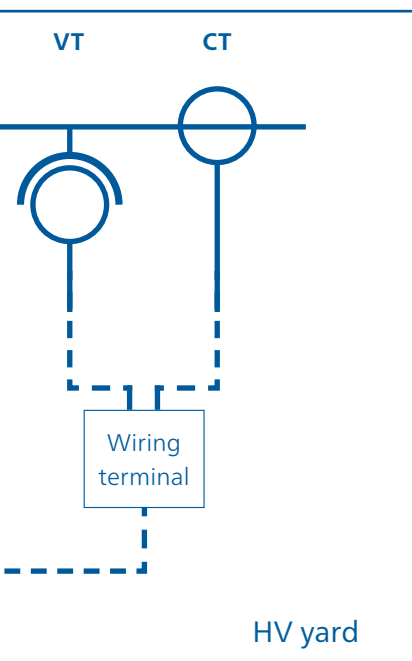
For testing of CBs or load breaker switches with integrated overcurrent elements, the CPC 100 can inject AC primary currents up to 800 A (or 2000 A together with the current booster CP CB2), and measure the time from the start of the injection to the interruption of the current.

## Primary injection

With the CPC 100 primary faults can be simulated to check if overcurrent, differential or distance relays operate correctly. The total trip time including the CB operating time can also be measured in this test.

## Protection installation testing

- > CT ratio (with burden)  
up to 800 A or 2000 A with the CP CB2, 5 kVA output power
- > CT burden  
up to 6 A<sub>AC</sub> | secondary
- > CT excitation curve (knee point)  
up to 2 kV<sub>AC</sub>
- > VT ratio  
up to 2 kV<sub>AC</sub> | polarity and burden
- > VT burden  
up to 130 V<sub>AC</sub> | secondary
- > Overcurrent relays with primary injection (MV)  
up to 800 A or 2000 A with the CP CB2, 5 kVA output power
- > Polarity check with CPOL2  
up to 800 A or 2 kV<sub>AC</sub>, 5 kVA output power
- > Testing of the entire protection chain  
by primary fault current injection and live CB tripping

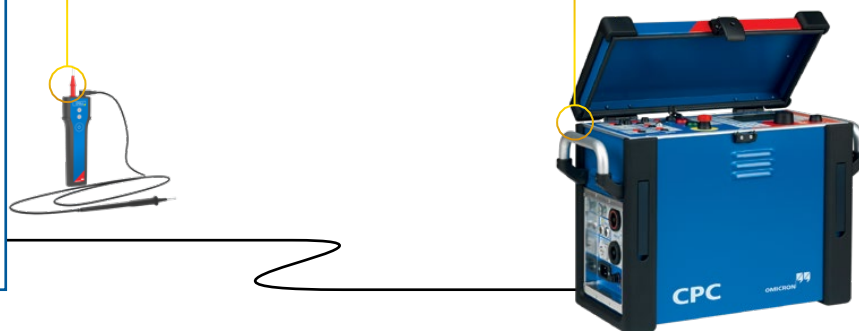


### + CPOL2

The CPOL2 can check the correct polarity along the different connection points in the secondary wiring by analyzing the sawtooth signal injected into the VT's and CT's primary side using the CPC 100.

### CPC 100

The CPC 100 can inject up to 800 A (2000 A with the CP CB2) or up to 2 kV as well as a sawtooth polarity check signal into CTs or VTs in the HV yard, hence performing testing on the whole system.



# IEC 61850-9-2 Sampled Values testing

## IEC 61850

The standard for "Communication Networks and Systems for Power Utility Automation", IEC 61850, utilizes network technologies for all types of information exchange.

Within IEC 61850, protocols for the transmission of instantaneous voltage and current values are specified.

The sensors used in the transmission process can be conventional CTs and VTs as well as unconventional current and voltage sensors.

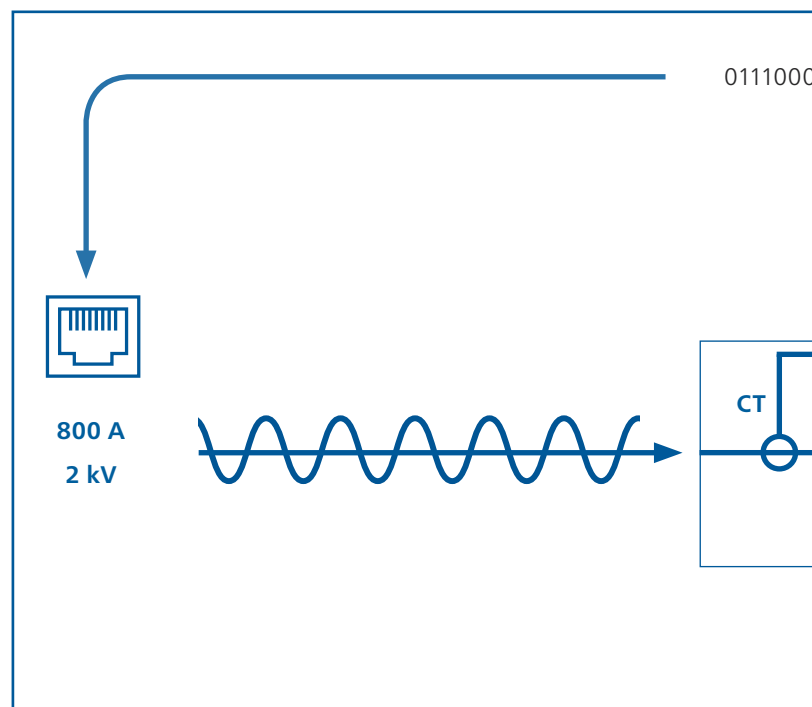
## Sampled Values

A merging unit (MU) collects the measured current and voltage values from the current and voltage sensors. Then it merges the digitized values, which are called "Sampled Values" (SV), into a data stream published to the substation network.

Using this method, measured values (for example, the bus voltage for a busbar protection scheme) can easily be distributed to multiple bay devices.

### Your benefits

- > Ready for applications in digital substations
- > Closed loop testing of merging units
- > Primary injection works independently of the sensor technology used



## Sampled Values testing with the CPC 100

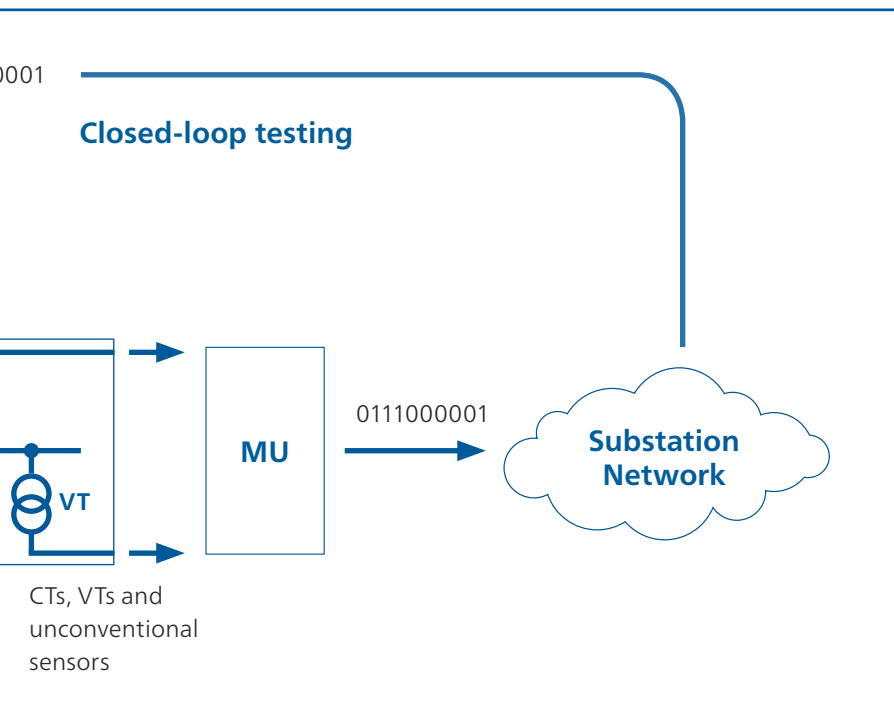
The CPC 100 test system performs closed-loop testing whereby a test signal is injected on the primary side of the current / voltage sensors. The MU converts the sensor output into a SV stream which is published to the substation network. The CPC 100 then reads the data back from the network in order to perform a variety of different tests.

Automatic MU and channel detection is achieved by injecting a test signal with a specific wave form. An optimized and time-effective algorithm searches for the unique test pattern within all the available MUs on the network to identify the correct channel for testing.

The CPC 100's SV test card operates according to the "Implementation Guideline for Digital Interface to Instrumental Transformers using IEC 61850-9-2" published by the IEC International User Group.

## Sampled Values testing

- > SV CT ratio test and polarity check  
up to 800 A or up to 2000 A , 5 kVA output power | with the CP CB2
- > SV VT ratio test and polarity check  
up to 2 kV<sub>AC</sub>
- > Automatic MU detection
- > Automatic voltage / current channel detection
- > Frequency selective voltage / current meter
- > Noise level measurement
- > Amplitude response of the signal processing chain  
up to 800 A or up to 2 kV<sub>AC</sub> | frequency from 15 Hz to 400 Hz



### CPC 100

The CPC 100 injects a sinusoidal test signal to perform tests such as the ratio test. Additionally, the CPC 100 generates specific periodic wave shapes to identify the correct MU and corresponding test channel.



# Operation of CPC 100: front panel

## Operating from the front panel

### Selecting test cards directly

Operating the CPC 100 manually provides the quickest results with minimal training and preparation – perfect for users who only operate the device occasionally. The user just selects the test card to be used, connects the CPC 100 to the asset and performs the test by pressing the start button.

### Using pre-defined test templates

Additionally, pre-defined test templates help the user to perform frequently used tests conveniently and efficiently. A number of test cards (for example, power/dissipation factor, winding resistance, ratio measurement, etc.) are combined into one test template. An example is the template containing all the recommended measurements for testing a current transformer.

The test template can be seen as a test plan. It tells the user which measurements to make and provides the basis for the overall test report.

Test templates can be prepared in advance in the office on the PC – without the CPC 100 connected – and can then be executed on site, step by step. Users can also create their own test templates and define, which test cards they want to include.

The settings and results of all manual tests can be stored on a flash memory and transferred to a PC using a USB memory stick or ethernet connection.



QUICK 1						Insert Card
AC 800A		800.0 A				Delete Card
400.00 Hz						Rename Card
Trigger on:	Binary	n/a				Clear Results
Bin In.:	<input type="radio"/> n/a		<input checked="" type="checkbox"/> Switch off on trigger			Save As Default
I Out	I AC	Ratio :1				Settings
A	°	A	°	:1	°	
20.00m	n/a	400.0μ	n/a	50.000	n/a	

CPC 100 test card

## Customized reporting: Microsoft Excel™

After transferring the test results to a PC, report templates in numerical and graphical form are available.

The measurement data – including settings and results as well as administrative information such as date and time, filename, etc. – can also be imported to these templates for customized reporting, graphical result evaluation and further analyses.

Microsoft Excel™ reports provide the basis for client-specific reporting and allow test reports to be adapted to utility or manufacturer specific formats. Further content, such as company logos, can also be added.

Test reports can then be printed in a variety of languages.

## Different ways to operate

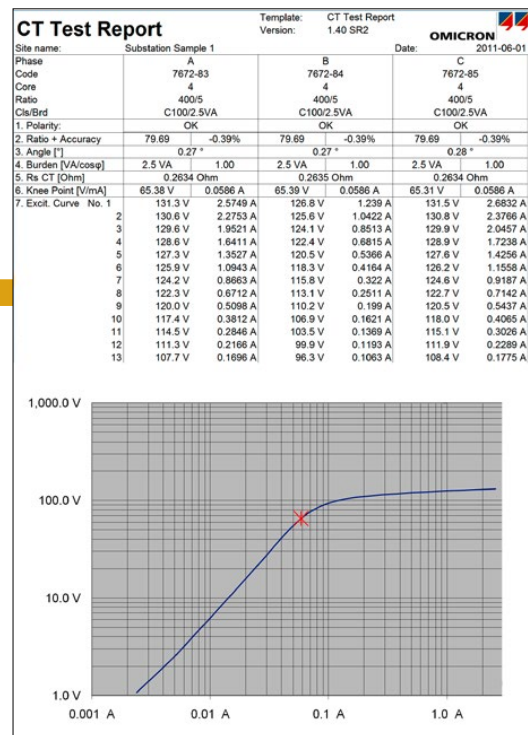
The CPC 100 offers different operating modes, to meet the personal preferences of the user:

- > From the front panel:  
Selecting test cards directly
- > From the front panel:  
Using pre-defined test templates
- > Fully automated:  
Using Primary Test Manager™ (see next page)

The screenshot shows a control panel for a test template. It includes several input fields for voltage (2000 V), frequency (400.00 Hz), and assessment parameters. A table displays test results for different frequencies (2013, 2000, 2020, 2015 Hz) with columns for V, A, Hz, F, %, and a question mark. The interface also features buttons for 'Insert Card', 'Delete Card', 'Rename Card', 'Clear Results', 'Save As Default', and 'Settings'.

V	A	Hz	F	%	?
2013	375.67μ	15.00	1.97748n	0.5395	n/a
2000	745.45μ	30.00	1.97462n	0.4439	n/a
2020	2.0029m	80.00	1.96997n	0.4025	n/a
2015	3.2428m	130.00	1.96736n	0.3934	n/a

Test template with test cards



Test report

# Step by step through the test procedure with Primary Test Manager™

The Primary Test Manager™ (PTM) software solution makes it possible to perform a multitude of tests on power transformers, circuit breakers, and current transformers. It provides active guidance for the user during the process of testing with the CPC 100, making tests faster, easier, and safer.

## Managing location, asset and test data

PTM provides a well-structured database for managing test results and getting a comprehensive overview of the asset's condition. Locations, assets, jobs and reports can be defined and managed quickly and easily.

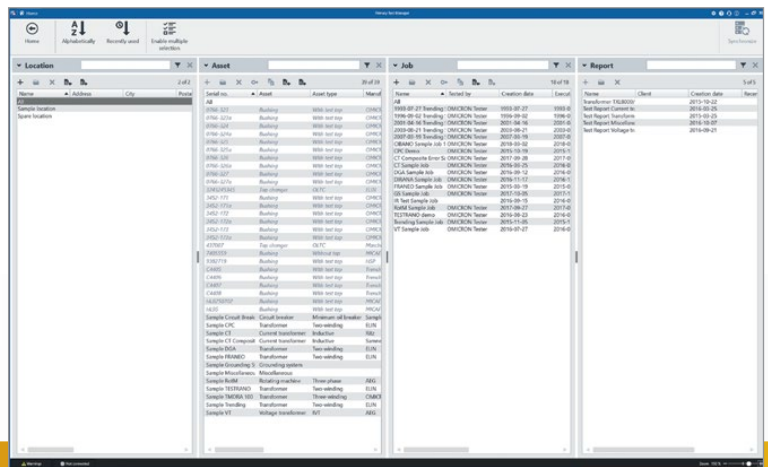
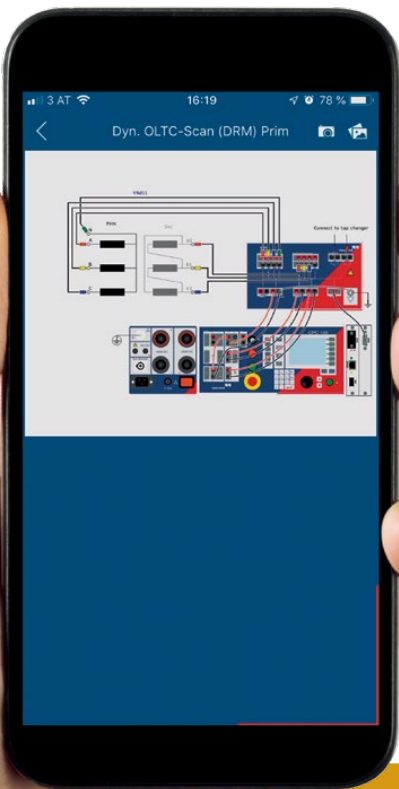
## Import and export functionality

PTM supports data exchange between different test systems. Data can be imported easily in the PTM database. In addition, they can be filtered or exported in common formats such as XML, PDF, Microsoft Word™, Microsoft Excel™.

## Data synchronization and back-up

During on-site testing, data is often generated by multiple testing teams. With the 'PTM DataSync' module all data can be synchronized to a central database hosted on premises or in the cloud. In doing so, data synchronization and storage becomes safer and more convenient. The relevant locations can be selected in order to keep the local database small.

Get the PTMate app free of charge in the App Store and Google Play Store!



Easy management of location, asset and test data due to a structured database, implemented search and filter functions and automatic data synchronization.

## Executing diagnostic tests

PTM helps to define the test asset with specific nameplate views. It indicates mandatory and recommended parameters, making data entry fast and easy.

Based on the nameplate values, PTM generates a customized test plan according to current standards and guidelines for each asset. This way PTM is able to provide you with a comprehensive test plan for assessing the condition of your asset thoroughly.

## Easy connection due to wiring diagrams

Pre-configured wiring diagrams based on selected assets help to set up the CPC 100 correctly. This minimizes the likelihood of measurement errors and speeds up the testing process.

## PTMate app – your mobile companion

PTMate is our mobile companion for PTM. The app supports you on site and extends the PTM feature set to your smartphone, such as easy data entering, fast and safe wiring for tests as well as a stop button for ongoing measurements.

## Result analysis and reporting

A real-time overview of the test results is given during the measurement and an instant “pass/fail” assessment of the test results is displayed based on specified limit values.

PTM automatically generates reports including all asset-related information and the tests that have been performed. This gives a comprehensive overview of the test object, test results and assessment.

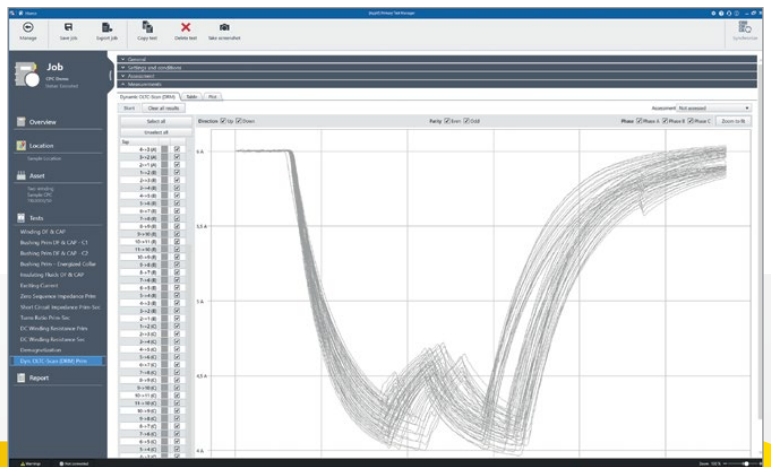
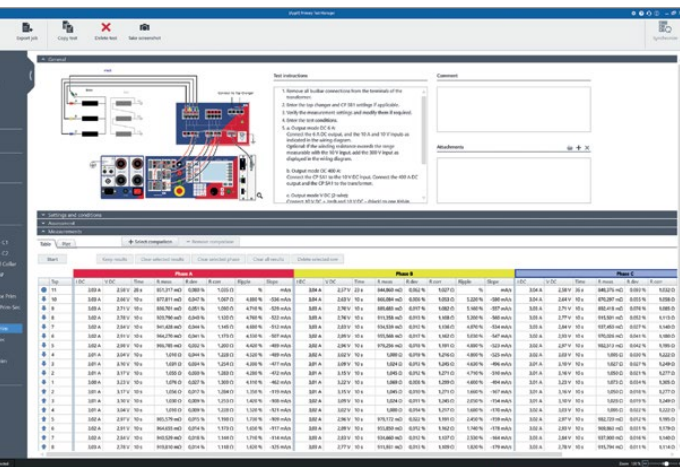
## Comparison tools for detailed analysis

For a detailed analysis, different test results can be compared side-by-side or trended over time. Users can choose between a time- and type-based comparison as well as a phase-based comparison.

## Customized, individual reports

User can adapt reports to their needs in PTM. Reports can be generated in Microsoft Word™, Microsoft Excel™ and as a PDF file.

They can be further adapted by e.g. compiling the included parts, providing comments or incorporating a company logo.



PTM supports you in the best possible way during execution of diagnostic tests via wiring diagrams and asset-specific test plans according to international standards.

For a comprehensive analysis, PTM offers automatic result assessment and comparison as well as customized reporting.

## Front panel and connection possibilities



1. Grounding terminal
2. High AC voltage output 2 kV AC
3. External booster output
4. High DC current output 400 A DC
5. High AC current output 800 A AC
6. Mains power supply
7. Overcurrent protection
8. Power switch



9. 6 A or 130 V output
10. Current output 6 A DC
11. Current measuring input 10 A AC or DC
12. Voltage measuring input 300 V AC
13. Low level voltage measuring input 3 V AC
14. Voltage measuring input 10 V DC
15. Binary input for potential-free contacts or voltages up to 300 V DC
16. Safety key lock
17. Signal lights
18. Emergency stop button
19. Quick button





- 19. Keys for the quick selection of applications
- 20. Keys for the quick selection of the desired view
- 21. LCD monitor
- 22. Soft-touch keys which change their function according to the selected application
- 23. Keys for selecting stacked test cards
- 24. Numerical keyboard
- 25. Advanced jog-dial hand wheel with "click" (Enter) function
- 26. Up / down keys for navigation and entering values
- 27. Test start / stop button
- 28. User manual

- 29. Serial interface for devices such as CP TD12/15
- 30. Plug to connect external safety functions (SAA1, SAA2, SAA3)  
Socket for the connection of the CPC 100 to a network or direct connection to a PC's network connector
- 31. USB memory stick connection

# Technical data CPC 100

## CPC 100

### Generator / Outputs

#### Current outputs

Range	Amplitude	$t_{\max}^1$	$V_{\max}^2$	$\text{Power}_{\max}^2$	$f$
800 A AC <sup>3</sup>	0 ... 800 A	25 s	6.0 V	4800 VA	15 Hz ... 400 Hz
	0 ... 400 A	8 min.	6.4 V	2560 VA	15 Hz ... 400 Hz
	0 ... 200 A	> 2 h	6.5 V	1300 VA	15 Hz ... 400 Hz
6 A AC <sup>10</sup>	0 ... 6 A	> 2 h	55 V	330 VA	15 Hz ... 400 Hz
3 A AC <sup>10</sup>	0 ... 3 A	> 2 h	110 V	330 VA	15 Hz ... 400 Hz
400 A DC	0 ... 400 A	2 min.	6.5 V	2600 VA	DC
	0 ... 300 A	3 min.	6.5 V	1950 VA	DC
	0 ... 200 A	> 2 h	6.5 V	1300 VA	DC
6 A DC <sup>4,10</sup>	0 ... 6 A	> 2 h	60 V	360 VA	DC

2000 A AC<sup>3</sup> with an optional current booster (CP CB2)

#### Voltage outputs

Range	Amplitude <sup>5</sup>	$t_{\max}$	$I_{\max}$	$\text{Power}_{\max}^5$	$f$
2 kV AC <sup>3</sup>	0 ... 2 kV	1 min.	1.25 A	2500 VA	15 Hz ... 400 Hz
	0 ... 2 kV	> 2 h	0.5 A	1000 VA	15 Hz ... 400 Hz
1 kV AC <sup>3</sup>	0 ... 1 kV	1 min.	2.5 A	2500 VA	15 Hz ... 400 Hz
	0 ... 1 kV	> 2 h	1.0 A	1000 VA	15 Hz ... 400 Hz
500 V AC <sup>3</sup>	0 ... 500 V	1 min.	5.0 A	2500 VA	15 Hz ... 400 Hz
	0 ... 500 V	> 2 h	2.0 A	1000 VA	15 Hz ... 400 Hz
130 V AC <sup>10</sup>	0 ... 130 V	> 2 h	3.0 A	390 VA	15 Hz ... 400 Hz

#### Internal measurement of outputs (Accuracy<sup>6</sup>)

Output	Range	Amplitude	Amplitude	Phase
		Reading Error	Full scale Error	Full scale Error
800 A AC	–	< 0.10 %	< 0.10 %	< 0.10°
400 A DC	–	< 0.20 %	< 0.05 %	–
2 kV AC	2000 V	< 0.05 %	< 0.05 %	< 0.10°
	1000 V	< 0.05 %	< 0.05 %	< 0.15°
	500 V	< 0.05 %	< 0.05 %	< 0.20°
5 A	5 A	< 0.20 %	< 0.05 %	< 0.10°
	500 mA	< 0.05 %	< 0.05 %	< 0.10°

### Inputs

#### Measuring inputs (Accuracy<sup>6</sup>)

Input	Imped.	Range	Amplitude	Amplitude	Phase
			Reading Error	Full scale Error	Full scale Error
I AC / DC <sup>4,7</sup>	< 0.1 $\Omega$	10 A AC	< 0.05 %	< 0.05 %	< 0.10°
		1 A AC	< 0.05 %	< 0.05 %	< 0.15°
		10 A DC	< 0.03 %	< 0.08 %	–
		1 A DC	< 0.03 %	< 0.08 %	–
V1 AC <sup>8</sup>	500 k $\Omega$	300 V	< 0.05 %	< 0.05 %	< 0.10°
		30 V	< 0.05 %	< 0.05 %	< 0.10°
		3 V	< 0.10 %	< 0.05 %	< 0.10°
V2 AC <sup>8,11</sup>	10 M $\Omega$	300 mV	< 0.15 %	< 0.05 %	< 0.10°
		3 V	< 0.03 %	< 0.08 %	< 0.10°
		300 mV	< 0.08 %	< 0.08 %	< 0.10°
V DC <sup>4,7</sup>	10 V	10 V	< 0.03 %	< 0.08 %	–
		1 V	< 0.03 %	< 0.08 %	–
		100 mV	< 0.05 %	< 0.10 %	–
		30 mV	< 0.10 %	< 0.25 %	< 0.15°
		10 mV	< 0.05 %	< 0.15 %	–

#### Additional features of the measuring inputs

Automatic range switching (except Amplifier test card)  
Galvanically separated potential groups: I AC/DC ; V1 & V2 ; V DC  
AC frequency range: 15 Hz to 400 Hz (except Amplifier test card)  
Protection of I AC/DC input: 10 A very fast acting (FF) fuse<sup>4</sup>

#### Binary input for dry contacts or voltages up to 300 V DC<sup>7</sup>

Trigger criteria: Toggling with potential-free contacts or voltages of up to 300 V  
Input impedance: > 100 k $\Omega$   
Response time: 1 ms

#### Output to input synchronization

	Test cards Quick, Sequencer, Ramping	Amplifier test card
Frequency range	48 Hz ... 62 Hz	48 Hz ... 62 Hz
Synchronization inputs	V1 AC (automatic range switch)	V1 AC, V2 AC, I AC (fixed to maximum range)
Input magnitude	10 % of input range full scale	
Output magnitude	5 % of output range full scale	
Settling time	100 ms after 5 % of output range full scale is reached	1000 ms after 5 % of output range full scale is reached
Signal changes	All quantities must be ramped within 20 signal periods	No changes of frequency and phase. Magnitude changes without limitation. Output follows within 250 ms
Phase tolerance	0.5 ° within the limits as specified above	



## Resistance measurement

### 4-wire measurement with 400 A DC output and 10 V DC input

Current	Resistance	Voltage	Accuracy (full scale)
400 A	10 $\mu\Omega$	4 mV	Error < 0.70 %
400 A	100 $\mu\Omega$	40 mV	Error < 0.55 %
400 A	1 m $\Omega$	400 mV	Error < 0.50 %
400 A	10 m $\Omega$	4 V	Error < 0.50 %

### 4-wire measurement with 6 A DC output and 10 V VDC input

Current	Resistance	Voltage	Accuracy (full scale)
6 A	100 m $\Omega$	0.6 V	Error < 0.35 %
6 A	1 $\Omega$	6 V	Error < 0.35 %
1 A	10 $\Omega$	10 V	Error < 0.25 %

### 2-wire measurement with 10 V VDC input

Current	Resistance	Voltage	Accuracy (full scale)
> 5 mA	100 $\Omega$		Error < 0.60 %
> 5 mA	1 k $\Omega$		Error < 0.51 %
> 5 mA	10 k $\Omega$		Error < 0.50 %

## Power supply and mechanical data

Single-phase, nominal <sup>9</sup>	100 V <sub>AC</sub> ... 240 V <sub>AC</sub> , 16 A
Single-phase, permissible	85 V <sub>AC</sub> ... 264 V <sub>AC</sub> (L-N or L-L)
Frequency, nominal	50 Hz / 60 Hz
Power consumption	< 3 500 VA (< 7 000 VA for a time < 10 s)
Connection	IEC 320 / C20
Weight	29 kg / 64 lbs (case without protection cover)
Dimensions (W x H x D)	468 x 394 x 233 mm (18.4 x 15.5 x 9.2 in), cover, without handles.

## Equipment reliability

Shock	IEC / EN 60068-2-27, 15 g / 11 ms, half-sinusoid, each axis
Vibration	IEC / EN 60068-2-6, frequency range from 10 Hz to 150 Hz, continuous acceleration 2 g (20 m/s <sup>2</sup> / 65 ft/s <sup>2</sup> ), 10 cycles per axis

## Environmental conditions for CPC 100 and CPC 100 accessories

Operating temperature	-10 °C ... +55 °C / +14 °F ... +131 °F
Storage temperature	-20 °C ... +70 °C / -4 °F ... +158 °F
Humidity range	5 % ... 95 % relative humidity, no condensation

All input / output values are guaranteed for one year within an ambient temperature of 23 °C  $\pm$  5 °C / 73 °F  $\pm$  10 °F, a warm-up time longer than 25 min. and in a frequency range of 45 Hz to 60 Hz or DC. Accuracy values indicate that the error is smaller than  $\pm$  (value read x reading error + full scale of the range x full scale error).

1. With a mains voltage of 230 V using a 2 x 6 m high-current cable at an ambient temperature of 23 °C  $\pm$  5 °C / 73 °F  $\pm$  10 °F.
2. The power and maximum voltage may be reduced above 60 Hz or below 50 Hz.
3. Output can be synchronized with V1 AC in Quick, Sequencer, Ramping and Amplifier test cards.
4. The inputs and outputs are protected with lightning arrestors between the connector and against the protective earth. In the event of application of energy exceeding a few hundred Joule the lightning arrestors apply a permanent short-circuit to the input / output.
5. The power and amplitude may be reduced above 200 Hz or below 50 Hz.
6. 98 % of all units have an accuracy better than specified as "typical".
7. This input is galvanically separated from all other inputs.
8. V1 and V2 are galvanically coupled but separated from all other inputs.
9. There are power restrictions for mains voltages below 190 V<sub>AC</sub>.
10. Fuse-protected.
11. When using the CTRogowski test card, the 3 V V2 AC input uses an additional software based integration method. In the range of 50 Hz < f < 60 Hz, this results in a phase shift of 90 ° as well as an additional phase error of  $\pm$  0.1 ° and an additional amplitude error of  $\pm$  0.01 %. For frequencies in the range of 15 Hz < f < 400 Hz, the phase error is not specified, and the amplitude error can be up to  $\pm$  0.50 % higher.

# Technical data CPC 100 accessories

## CP TD12/15 – Tan-delta unit



Combined with the CPC 100, the CP TD12/15 measures the capacitance and dissipation/power factor with laboratory precision.

### High-voltage output

U/f	THD	I	S <sub>max</sub>	t <sub>max</sub>
0 ... 12 kV AC	< 2 %	300 mA	3600 VA	> 2 min
		100 mA	1200 VA	> 60 min
0 ... 15 kV AC	< 2 %	300 mA	4500 VA <sup>1</sup>	> 2 min
		100 mA	1500 VA	> 60 min

### Capacitance C<sub>p</sub> (equivalent parallel circuit)

Range	Typical accuracy <sup>2</sup>	Conditions
1 pF ... 3 μF	Error < 0.05 % of reading + 0.1 pF	I <sub>x</sub> < 8 mA, V <sub>test</sub> = 2 kV ... 10 kV
1 pF ... 3 μF	Error < 0.2 % of reading	I <sub>x</sub> > 8 mA, V <sub>test</sub> = 2 kV ... 10 kV

### Power factor (cos φ) / Dissipation factor (tan δ)

Range	Typical accuracy <sup>2</sup>	Conditions
0 ... 10 % (capacitive)	Error < 0.1 % of reading + 0.005 %	f = 45 Hz ... 70 Hz I < 8 mA V <sub>test</sub> = 2 kV ... 10 kV
0 ... 100 % (cos φ)	Error < 0.5 % of reading + 0.02 %	V <sub>test</sub> = 2 kV ... 10 kV
0 ... 10000 % (tan δ)	Error < 0.5 % of reading + 0.02 %	V <sub>test</sub> = 2 kV ... 10 kV

### Mechanical data

Dimensions (W x H x D)	460 x 317 x 223 mm / 18.1 x 12.5 x 8.8 in
Weight CP TD12	23 kg / 51 lbs
Weight CP TD15	24 kg / 53 lbs

<sup>1</sup> Depending on control device and power supply

<sup>2</sup> Means "typical accuracy"; at typical temperatures of 23 °C ± 5 K; 98 % of all units have an accuracy which is better than specified

## CP SB1 – Switch box



The CP SB1 switch box enables fully automatic testing of three-phase power transformers.

AC input / V1 AC output	Max. 300 V <sub>rms</sub>
DC input	Max. 6 A <sub>DC</sub>
Transformer high and low voltage connections	Max. 300 V <sub>rms</sub> between all connectors and ground
Supply	Via serial interface from CPC 100 (+15 V)
Dimensions (W x H x D)	357 x 235 x 111 mm / 14.1 x 9.2 x 4.4 in
Weight	3.5 kg / 7.7 lbs

## CP TC12 – 12 kV oil test cell



The CP TC12 oil test cell precisely determines the dielectric constant, the dissipation factor (tan delta) and the power factor of insulating liquids such as transformer oil.

Cell type	Three-electrode design with guard
Test gap	11 mm / 0.43 in
Capacitance of empty cell (air)	Approx. 65 pF ± 10 %
Sample volume	1.2 liters ... 2 liters / 41 ... 68 fl.oz.
Max. RMS test voltage	12 kV
Inner dimensions (diameter x height)	172 mm x 180.8 mm / 6.8 x 7.1 in
Outer dimensions (W x H x D)	220 x 235.5 x 220 mm / 8.7 x 9.3 x 8.7 in
Weight	Approx. 9.2 kg / 20 lbs

## CP DB1 – Discharge box



The CP DB1 transformer discharge box facilitates fast discharging of power transformers during the test process.

### 6 A path

Switch closed	6 A continuous
Switch open	The discharge process is faster by a factor of 4 compared to the CPC 100, 6 A <sub>peak</sub> Overtemperature protection: 85 °C / 185 °F Overvoltage protection: 150 V / 5 kA between connectors

### 100 A path

Switch closed	100 A continuous
Switch open	The discharge process is faster by a factor of 10 compared to the CPC 100, 100 A <sub>peak</sub> , 2500 J <sub>max</sub> Overvoltage protection: 200 V / 30 kA between connectors

### Mechanical data

Dimensions (W x H x D)	357 x 235 x 147 mm / 14.0 x 9.2 x 5.8 in
Weight	4 kg / 8.8 lbs

## CP CU1 – Coupling unit



In combination with the CPC 100 the CP CU1 is used for line parameter measurements and ground testing.

### Output ranges

Range	Current	Compliance voltage at > 45 Hz
10 A	0 ... 10 A <sub>rms</sub>	500 V <sub>rms</sub>
20 A	0 ... 20 A <sub>rms</sub>	250 V <sub>rms</sub>
50 A	0 ... 50 A <sub>rms</sub>	100 V <sub>rms</sub>
100 A	0 ... 100 A <sub>rms</sub>	50 V <sub>rms</sub>

### Output power

Characteristic	Rating
Maximum power	5000 VA (45 Hz ... 70 Hz), $\cos \varphi < 1.0$ for 8 s at 230 V <sub>AC</sub>
Continuous power	5000 VA (45 Hz ... 70 Hz), $\cos \varphi < 0.4$ for 8 s at 115 V <sub>AC</sub>
Continuous power	0 ... 1600 VA

### Measuring transformers

Transformer	Ratio	Accuracy at 50 Hz / 60 Hz
VT	600 V : 30 V	Class 0.1
CT	100 A : 2.5 A	Class 0.1

### Inputs

	Characteristic	Rating
V SENSE	Overvoltage category	CAT III (IEC 61010-1)
	Voltage range	0 ... 600 V <sub>rms</sub>
BOOSTER	Overvoltage category	CAT I
	Voltage range	0 ... 200 V <sub>rms</sub>
	Current range	0 ... 30 A <sub>rms</sub>
	Frequency range	15 Hz ... 400 Hz
	Fuse	30 A fast acting, automatic circuit breaker

### Accuracy

Range	Accuracy of absolute value	Accuracy of phase angle	V SENSE voltage	I OUT current	Current range
0.05 ... 0.2 Ω	1.0 ... 0.5 %	1.5 ... 0.8°	5 ... 20 V	100 A	100 A
0.2 ... 2 Ω	0.5 ... 0.3 %	0.8 ... 0.5°	20 ... 50 V	100 ... 25 A	100 A
2 ... 5 Ω	0.3 %	0.5°	100 V	50 ... 20 A	50 A
5 ... 25 Ω	0.3 %	0.5°	100 ... 250 V	20 ... 10 A	20 A
25 ... 300 Ω	0.3 ... 1.0 %	0.5 ... 1.5°	250 ... 500 V	10 ... 1.5 A	10 A

### Mechanical data

Dimensions (W × H × D)	450 × 220 × 220 mm / 17.7 × 8.7 × 8.7 in
Weight	28.5 kg / 62.78 lbs

## CP GB1 – Grounding box



The CP GB1 grounding box features high current surge arrestors to protect the CP CU1 and the CPC 100 from unexpected overvoltages on the line under test.

Nominal ac spark-over voltage	< 1000 V <sub>rms</sub>
Impulse spark-over voltage	< 2000 V <sub>peak</sub>
<b>Short circuit proof with:</b>	
16 mm cylindrical or 20 mm ball studs	26.5 kA (< 100 ms) / 67 kA <sub>peak</sub>
25 mm ball studs	30 kA (< 100 ms) / 75 kA <sub>peak</sub>
Torsional moment for changing arrestors	> 15 Nm
Dimensions (Ø × H)	200 × 190 mm / 7.9 × 7.5 in
Weight	6.8 kg / 13.2 lbs (including grounding cable)

## HGT1 – Handheld grounding tester



The HGT1 handheld grounding tester can be combined with the CPC 100 and CP CU1 to measure step and touch voltages.

Voltage input	Max. 25 V <sub>rms</sub>
Power supply	1 × 3.7 V lithium polymer (Li-Po) battery
Dimensions (W × H × D)	90 × 180 × 45 mm / 3.5 × 7.1 × 1.8 in
Weight (including battery)	0.48 kg / 1 lb

# Technical data CPC 100 accessories

## CP CR600 – Compensation reactor



The CP CR600 compensating reactor allows to test the insulation quality of generators, motors and other systems with large capacitance up to 1  $\mu$ F.

Maximum test voltage	15 kV <sub>rms</sub> ( $\geq$ 50 Hz)
Inductors	100 H ... 105 H $\pm$ 5%
	50 H ... 52.5 H $\pm$ 5%
	20 H ... 26.3 H -2% + 7%

### Capacitance compensation (possible combination)

50 Hz / 15 kV	100 H	50 H	25 H
60 nF ... 160 nF	■		
130 nF ... 260 nF		■	
230 nF ... 350 nF	■	■	
330 nF ... 450 nF			■
420 nF ... 550 nF	■		■
520 nF ... 640 nF		■	■
620 nF ... 740 nF	■	■	■
60 Hz / 15 kV	100 H	50 H	25 H
50 nF ... 120 nF	■		
85 nF ... 190 nF		■	
150 nF ... 250 nF	■	■	
220 nF ... 320 nF			■
290 nF ... 390 nF	■		■
350 nF ... 460 nF		■	■
420 nF ... 520 nF	■	■	■

### Mechanical data

Dimensions (W x H x D)	455 x 275 x 220 mm / 17.9 x 10.8 x 8.7 in
Weight	48 kg / 105.8 lbs

## CP CB2 – Current booster



The CP CB2 is an current booster for applications requiring currents up to 2000 A.

Output current	up to 2000 A
Output power at 2000 A	5 kVA
Accuracy of current at 50 Hz / 60 Hz	Error $< \pm$ 0.13 % (rd) $\pm$ 0.13 % (fs)
Phase tolerance at full scale	Error $< \pm$ 0.25 %
Dimensions (W x H x D)	186 x 166 x 220 mm
	7.3 x 6.5 x 8.7 in
Weight	16.0 kg / 35.3 lbs

## CP RC – Compensating reactor



The CP RC resonance circuit units in combination with the CPC 100 can be used for voltage withstand testing of gas-insulated switchgears (GIS).

	CP TR7 / CP TR8	CP CR4 / CP CR6	CP AT1
Voltage output	180 V <sub>i</sub> / 220 V	220 V	254 V - 278 V
Current output	60 A	150 A	16 A
Apparent power on secondary side	13.2 kVA <sub>r</sub>	33 kVA <sub>r</sub>	4.4 kVA <sub>r</sub>
Frequency	80 Hz ... 120 Hz	80 Hz ... 120 Hz	50 Hz / 60 Hz
Insulation class	F	F	F
Weight	19 kg / 42 lbs	20.5 kg / 45 lbs	15.5 kg / 34 lbs
Dimensions (W x H x D)	262 x 277.5 x 222 mm / 10.31 x 10.9 x 8.74 in		

## CPOL2 – Polarity checker



The CPOL2 can check the correct polarity along the different connection points in an instrument transformer's secondary wiring.

Measuring range	250 $\mu$ V <sub>rms</sub> ... 300 V <sub>rms</sub>
Evaluated signal form	Polarity test signal with slope ratio $\geq$ 3:1
Nominal frequency	52.6 Hz
Power consumption	Measurement active: $<$ 100mW Standby: $<$ 50 $\mu$ W
Input impedance	$>$ 300 k $\Omega$
Batteries	Type and number: 2 x 1,5 V Mignon LR6 AA AM4 MN1500
Dimensions (W x H x D)	180 x 55 x 35 mm / 7.1 x 2.2 x 1.4 in
Weight	150 g / 0.33 lb

# Ordering information

## CPC 100 Packages

Package	Description	Ordering No.
CPC 100 Basic Package	Package including CPC 100 and all accessories to perform basic checks on primary assets.	VE000601
CPC 100 Standard Package <small>includes CPC 100 Basic Package</small>	Package including CPC 100 and all accessories to perform common electrical tests on instrument and power transformers.	VE000611
CPC 100 Enhanced Package <small>includes CPC 100 Standard Package</small>	In addition to the standard package powerful tools for substation commissioning are provided.	VE000621
CPC 100 Transformer Test System	Package including CPC 100, CP TD12 and all accessories to perform common electrical tests and power/dissipation factor measurements on power transformers.	VE000633
CPC 100 Line Impedance Test System	Package including CPC 100, CP CU1, CP GB1 and all accessories to perform impedance measurements for determination of distance protection relay settings.	VE000602
CPC 100 Rotating Machines Test System	Package including CPC 100, CP TD15, CP CR600 and all accessories to perform common electrical tests and power/dissipation factor measurements on rotating machines.	VE000635
CPC 100 PF/DF Test System	Package including CPC 100, CP TD12 and all accessories to perform power/dissipation factor measurements on all assets.	VE000632



CPC 100 Standard Package

# Ordering information

## CPC 100 Upgrade Options

Package	Description	Ordering No.
CP TD12 Upgrade Option	Upgrade option to expand your existing CPC 100 to a 12 kV power/dissipation factor test system.	VE000638
CP TD15 Upgrade Option	Upgrade option to expand your existing CPC 100 to a 15 kV power/dissipation factor test system.	VE000639
CP CB2 Upgrade Option	Upgrade option allowing test currents of up to 2000 A in conjunction with the CPC 100.	VEHZ0630
CP SB1 Upgrade Option	Upgrade option to expand your existing CPC 100 standard package to a fully automated transformer test system.	VEHZ0692
CP CU1 and CP GB1 Upgrade Option	Upgrade option to expand your existing CPC 100 to a line impedance measurement test system. Note: CP sequencer test card has to be ordered separately (order no. VESM0635)	VEHZ0671
Ground Impedance and Step & Touch Voltage Set	Package to measure ground impedance and step and touch voltages of substations. Including handheld grounding tester HGT1 and accessories.	VEHZ0708
CPC Sync Upgrade Option for existing CPC	Upgrade option including the TRC1 which allows synchronizing up to three CPC in order to create a powerful source for HV applications.	VEHO0648
CPC Sync Upgrade Option for new CPC	Upgrade option including the TRC1 which allows synchronizing up to three CPC in order to create a powerful source for HV applications.	VEHO0649
CPC 80	Slave unit including accessories for synchronization of CPCs. Note: Only CPC 100 can be used as master and slave unit.	VE000649
CP RC1 Upgrade Option	Upgrade option for high voltage testing on gas-insulated switchgear (GIS) up to 123 kV rated voltage.	VEHZ0760
CP RC2 Upgrade Option	Upgrade option for high voltage testing on gas-insulated switchgear (GIS) up to 145 kV rated voltage.	VEHZ0770
CPOL2 Upgrade Option	Upgrade option to check polarity of a CT's or VT's secondary wiring.	VESM0645
CP TC12 Upgrade Option	Upgrade option for determination of power/dissipation factor and permittivity of insulator liquids, e.g. transformer oil. It is used in conjunction with the CPC 100 and the CP TD12/15.	VEHZ0601
CP DB1 Upgrade Option	Upgrade option for faster discharging after a winding resistance measurement on a power transformer.	VEHZ0695
CP CR600 Upgrade Option	Upgrade option for power/dissipation factor measurements on rotating machines in conjunction with the CPC 100 and the CP TD15: Compensation reactor with 25 H Compensation reactor with 50 H Compensation reactor with 100 H	VEHZ0593 VEHZ0594 VEHZ0595



## CPC 100 Upgrade Options

Package	Description	Ordering No.
Stator Core Measurement Upgrade Option	Upgrade option to expand the measurement capability of the CPC 100 to perform electromagnetic imperfection testing on the stator core of rotating machines	P0000056
PTM Advanced for CPC 100 Upgrade Option	Upgrade option to operate your CPC 100 using the guided workflow, depending on available software licences.	VESM0671
PTM Advanced for CPC 80 Upgrade Option	Upgrade option to operate your CPC 80 using the guided workflow, depending on available software licences.	VESM0676
PTM Advanced for HGT1 Upgrade Option	Upgrade option for the Ground Impedance and Step & Touch Voltage Set to use the guided PTM workflow with your HGT1.	VESM0626
PTM DataSync "OnPremises" Upgrade Option	Separate module for data synchronization and back-up: For up to 3 users	VESM0677
	For up to 10 users	VESM0678
	For up to 25 users	VESM0679
	Upgrade for 1 user	VESM0680
PTM DataSync "Cloud" Upgrade Option	Separate module for data synchronization and back-up: For up to 3 users	VESM0681
	For up to 10 users	VESM0682
	For up to 25 users	VESM0683
	Upgrade for 1 user	VESM0684

## Safety accessories

Package	Description	Ordering No.
SAA1	Audible beeper dongle	VEHZ0786
SAA2	Cascadable safety accessory (up to six signal lamps) to mark testing area, including emergency button and optional audible signal	—*
SAA3	3-position remote emergency switch, with connection cable (15 m / 49 ft)	VEHZ0688

\* Find detailed ordering information and package descriptions on [www.omicronenergy.com/cpc100](http://www.omicronenergy.com/cpc100)

We create customer value through ...

## — Quality —

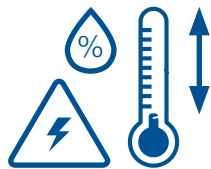
You can rely



on the highest  
safety and security  
standards

Superior reliability  
through up to

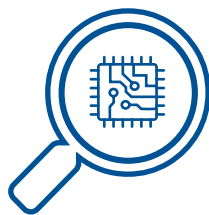
72



hours burn-in tests before delivery

100%

routine testing of all  
test set components



ISO 9001  
TÜV & EMAS  
ISO 4001  
OHSAS 18001

Compliance with  
international standards



## — Innovation —



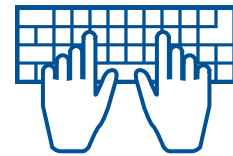
... a product portfolio geared  
to my needs

More than

200

developers

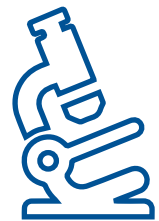
keep our solutions up-to-date



More than

15%

of our annual sales gets reinvested  
in research and development



Save up to

70%

testing time through templates,  
and automation



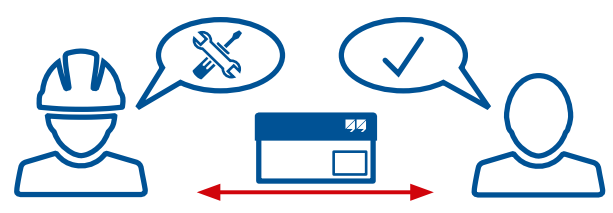
## — Support —



Professional technical support at any time



Loaner devices help to reduce downtime



Cost-effective and straight-forward repair and calibration



offices worldwide for local contact and support

## — Knowledge —

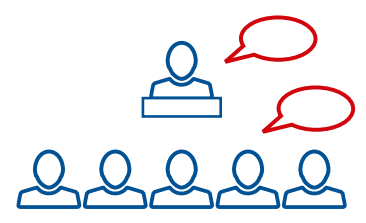
More than

300

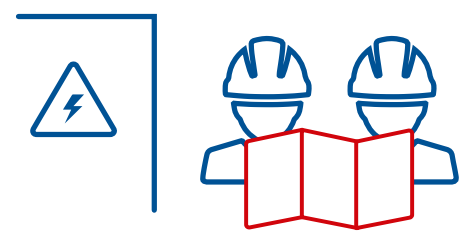


Academy and numerous hands-on trainings per year

Frequent OMICRON hosted user meetings, seminars and conferences



to thousands of technical papers and application notes



Extensive expertise in consulting, testing and diagnostics

OMICRON is an international company serving the electrical power industry with innovative testing and diagnostic solutions. The application of OMICRON products allows users to assess the condition of the primary and secondary equipment on their systems with complete confidence. Services offered in the area of consulting, commissioning, testing, diagnosis and training make the product range complete.

Customers in more than 160 countries rely on the company's ability to supply leading-edge technology of excellent quality. Service centers on all continents provide a broad base of knowledge and extraordinary customer support. All of this together with our strong network of sales partners is what has made our company a market leader in the electrical power industry.

For more information, additional literature, and detailed contact information of our worldwide offices please visit our website.