

Single-Input 250 W to 300 W



6060B and 6063B

Cost-effective for single input applications
Convenient optional front panel input connection

The 6060B and 6063B each provides one load input. This is more convenient for single input applications than a mainframe product.

These electronic loads are particularly suited for the lab bench. Entering commands manually using the front panel keypad is simpler because the channel does not need to be specified, as in a mainframe configuration. The keypad entry is further simplified because these products do not have the downloadable LIST feature of the N3300A Series, which helps to maximize production throughput. Extensive protection is included to help protect your valuable prototypes under test. This includes overvoltage, overcurrent, overtemperature, overpower, and reverse polarity.

These loads are suitable for manufacturing test systems where maximizing speed is not critical. They use industry standard SCPI instructions, and also have *VXIPlug&Play* drivers to simplify system design. For the greatest speed and accuracy in programming and measurement, see the N3300A Series of DC electronic loads.

Specifications	6060B	6063B
Amperes	0 to 60 A	0 to 10 A
Volts	3 to 60 V	3 to 240 V
Maximum power (at 40° C)	300 W	250 W
Constant current mode		
Ranges	0 to 6 A, 0 to 60 A	0 to 1 A, 0 to 10 A
Accuracy	0.1% ±75 mA	0.15% ±10 mA
Regulation	10 mA	8 mA
Constant voltage mode		
Accuracy	0.1% ±50 mV	0.12% ±120 mV
Regulation (w/remote sense)	10 mV	10 mV
Constant resistance mode	0.033 to 1.0 Ω	0.20 to 24.0 Ω
Ranges	1 to 1,000 Ω 10 to 10,000 Ω	24 to 10,000 Ω 240 to 50,000 Ω
Accuracy	1 Ω: 0.8% ±8 mΩ (with ≥6 A at input) 1 KΩ: 0.3% ±8 mS (with ≥6 V at input) 10 KΩ: 0.3% ±8 mS (with ≥6 V at input)	24 Ω: 0.8% ±200 mΩ (with ≥1 A at input) 10 KΩ: 0.3% ±0.3 mS (with ≥24 V at input) 50 KΩ: 0.3% ±0.3 mS (with ≥24 V at input)
Transient generator		
Frequency range	0.25 Hz to 10 kHz	0.25 Hz to 10 kHz
Accuracy	3%	3%
Duty cycle range	3 to 97% (0.25 Hz to 1 kHz) 6 to 94% (1 to 10 kHz)	3 to 97% (0.25 Hz to 1 kHz) 6 to 94% (1 to 10 kHz)
Accuracy	6% of setting ±2%	6% of setting ±2%
Current level high range	60-A range:	10-A range:
Accuracy	0.1% ±350 mA	0.18% ±50 mA
Current level low range	6-A range:	1-A range:
Accuracy	0.1% ±80 mA	0.18% ±13 mA
Voltage level	3 to 60 V	3 to 240 V
Voltage level accuracy	0.1% ±300 mV	0.15% ±1.1 V
Readback specifications		
Current readback accuracy	0.05% ±65 mA	0.12% ±10 mA
Voltage readback accuracy	±(0.05% + 45 mV)	±(0.1% + 150 mV)
Ripple and noise (20-Hz to 10-MHz noise)		
Current	4 mA rms 40 mA peak-to-peak	1 mA rms 10 mA peak-to-peak
Voltage	6 mV rms	6 mV rms

Single-Input: 250 W to 300 W (Continued)

Specifications	6060B	6063B
Supplemental Characteristics (Non-warranted characteristics determined by design that are useful in applying the product)		
Constant current mode	60-A range: 16 mA	10-A range: 2.6 mA
Resolution	6-A range: 1.6 mA	1-A range: 0.26 mA
Temperature coefficient	100 ppm/°C ±5 mA/°C	150 ppm/°C ±1 mA/°C
Constant voltage mode		
Resolution	16 mV	64 mV
Temperature coefficient	100 ppm/°C ±5 mV/°C	120 ppm/°C ±10 mV/°C
Constant resistance mode		
Resolution	1 Ω: 0.27 mΩ 1 KΩ: 0.27 mS 10 KΩ: 0.027 mS	24 Ω: 6 mΩ 10 KΩ: 0.011 mS 50 KΩ: 0.001 mS
Temperature coefficient	1 Ω: 800 ppm/°C ±0.4 mΩ/°C 1 KΩ: 300 ppm/°C ±0.6 mS/°C 10 KΩ: 300 ppm/°C ±0.6 mS/°C	24 Ω: 800 ppm/°C ±10 mΩ/°C 10 KΩ: 300 ppm/°C ±0.03 mS/°C 50 KΩ: 300 ppm/°C ±0.03 mS/°C
Transient generator		
Frequency range	0.25 Hz to 10 kHz	0.25 Hz to 10 kHz
Resolution	4% or less	4% or less
Duty cycle range	3 to 97% (0.25 Hz to 1 kHz) 6 to 94% (1 to 10 kHz)	3 to 97% (0.25 Hz to 1 kHz) 6 to 94% (1 to 10 kHz)
Resolution	4%	4%
Current level high range	60-A range: 260 mA	10-A range: 43 mA
Current level low range	6-A range: 26 mA	1-A range: 4 mA
Current temperature coefficient	100 ppm/°C ±7 mA/°C	180 ppm/°C ±1.2 mA/°C
Voltage level resolution	260 mV	1 V
Voltage temperature coefficient	150 ppm/°C ±5 mV/°C	120 ppm/°C ±10 mV/°C
Programmable slew rate	60-A range: 1 A/ms to 5 A/μs 6-A range: 0.1 A/ms to 0.5 A/μs	10-A range: 0.17 A/ms to 0.83 A/μs 1-A range: 17 A/ms to 83 A/ms
Rise/fall time	12 μs to 8 ms	16 μs to 8 ms
Analog programming bandwidth	10 kHz (–3 dB frequency)	10 kHz (–3 dB frequency)
Analog programming accuracy		
Current (low range)	4.5% ±75 mA	3% ±8 mA
Current (high range)	4.5% ±250 mA	3% ±20 mA
Temperature coefficient	100 ppm/°C ±6 mA/°C	150 ppm/°C ±1 mA/°C
Voltage	0.8% ±200 mV	0.5% ±150 mV
Temperature coefficient	100 ppm/°C ±1 mV/°C	120 ppm/°C ±10 mV/°C
Analog programming voltage	0 to 10 V	0 to 10 V
Readback specifications		
Current readback resolution	17 mA (via GPIB) 20 mA (front panel)	2.7 mA (via GPIB) 10 mA (front panel)
Temperature coefficient	50 ppm/°C ±5 mA/°C	100 ppm/°C ±1 mA/°C
Voltage readback resolution	17 mV (via GPIB) 20 mV (front panel)	67 mV (via GPIB) 100 mV (front panel)
Temperature coefficient	50 ppm/°C ±1.2 mV/°C	100 ppm/°C ±8 mV/°C

Notes:

1. Operating temperature range is 0° to 55°C. All specifications apply for 25°C ±5°C, except as noted.
2. Maximum continuous power available is derated linearly from 40°C to 75% of maximum at 55°C.
3. DC current accuracy specifications apply 30 seconds after input is applied.

Single-Input: 250 W to 300 W (Continued)

Specifications

6060B

6063B

Notes:

1. Operating temperature range is 0° to 55°C. All specifications apply for 25°C ±5°C, except as noted.
2. Maximum continuous power available is derated linearly from 40°C to 75% of maximum at 55°C.
3. DC current accuracy specifications apply 30 seconds after input is applied.

Supplemental Characteristics

(Non-warranted characteristics determined by design that are useful in applying the product)

Supplemental Characteristics	6060B	6063B
Analog monitor accuracy		
Current monitor (0 to 10 V out)	4% ±85 mA	3% ±10 mA
Temperature coefficient	50 ppm/°C ±6 mA/°C	100 ppm/°C ±1 mA/°C
Voltage monitor (0 to 10 V out)	0.25% ±40 mV	0.4% ±240 mV
Temperature coefficient	50 ppm/°C ±0.2 mV/°C	70 ppm/°C ±1.2 mV/°C
Remote sensing	5-Vdc maximum between sense and load input	5-Vdc maximum between sense and load input
Minimum operating voltage (at full rated current)	2 volts (1.2 V typical)	2 volts (1.2 V typical)
Programmable short	0.033 Ω (0.020 Ω typical)	0.20 Ω (0.10 Ω typical)
Programmable open (typical)	20 kΩ	80 kΩ
Drift (over 8-hour interval)		
Current	0.03% ±10 mA	0.03% ±15 mA
Voltage	0.01% ±10 mV	0.01% ±20 mV
DC isolation voltage	±240 Vdc, between any input and chassis ground	±240 Vdc, between any input and chassis ground
Digital inputs	V _{IL} = 0.9 V max at I _{IL} = -1 mA / V _{IH} = 3.15 V min (pull-up resistor on input)	V _{IL} = 0.9 V max at I _{IL} = -1 mA / V _{IH} = 3.15 V min (pull-up resistor on input)
Digital outputs	V _{OL} = 0.72 V max at I _{OL} = 1 mA / V _{OH} = 4.4 V min at I _{OH} = -20 μA	V _{OL} = 0.72 V max at I _{OL} = 1 mA / V _{OH} = 4.4 V min at I _{OH} = -20 μA
Net weight (approx.)	6.12 kg (13.5 lb)	6.12 kg (13.5 lb)
Shipping weight	8.16 kg (18 lb)	8.16 kg (18 lb)

Single-Input: 250 W to 300 W (Continued)

Application Notes:

Agilent AN 372-1 Power Supply Testing
(AN 372-1)
5952-4190

Agilent AN 372-2 Battery Testing
(AN 372-2)
5952-4191

Pulsed Characterization of Power Semiconductors Using Electronic Loads
(AN 1246)
5091-7636E

Supplemental Characteristics for all model numbers

Software Driver:
VXIPlug&Play

Weight: 6.12 kg (13.5 lb) net; 8.16 kg (18 lb) shipping

Size: 425.5 mm W x 88.1 mm H x 396 mm D (16.75 in x 3.5 in x 13.7 in)

Warranty: One year

Ordering Information

Opt 020 Front Panel DC Input Connectors

Opt 100 87 to 106 Vac, 47 to 66 Hz input (for Japan only)

Opt 120 104-127 Vac, 47 to 66 Hz

Opt 220 191 to 233 Vac, 47 to 66 Hz input

Opt 240 209 to 250 Vac, 47 to 66 Hz input

* **Opt 908** Rack-mount Kit (p/n 5062-3974C)

* **Opt 909** Rack-mount Kit with Handles (p/n 5063-9219)

Opt 0L1 Full documentation on CD-ROM, and printed standard documentation package

Opt 0L2 Extra copy of standard printed documentation package

Opt 0B0 Full documentation on CD-ROM only

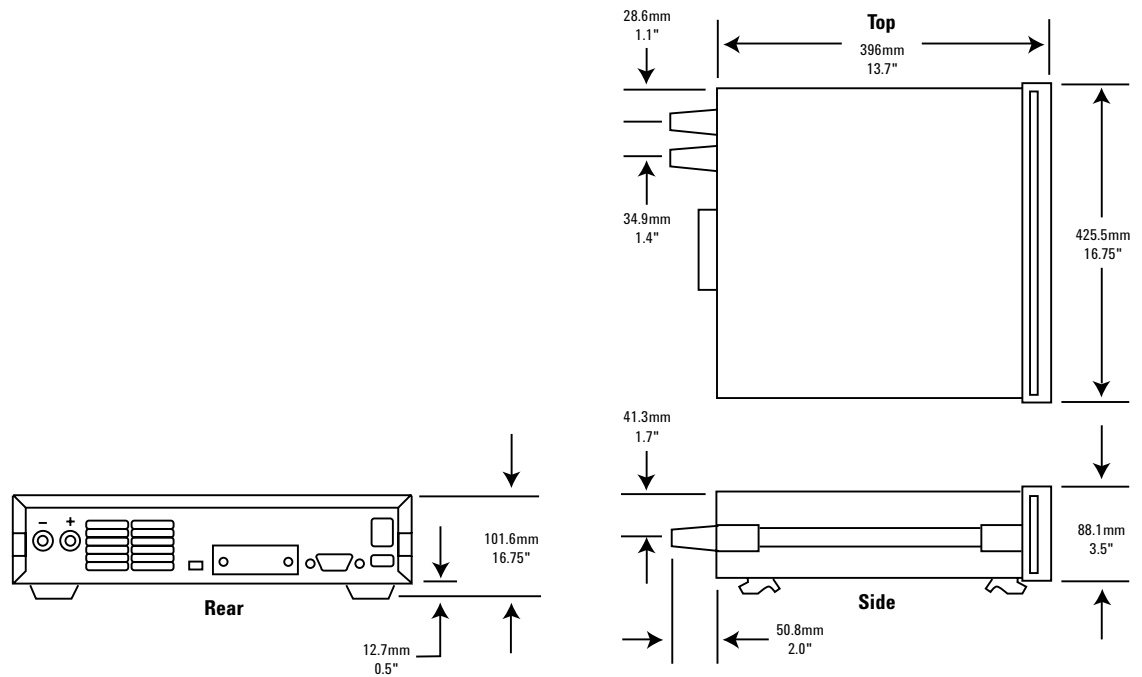
Opt 0B3 Service Manual

* Support rails required

Accessories

E3663AC Support rails for Agilent rack cabinets

Agilent Models: 6060B, 6063B



More detailed specifications at www.agilent.com/find/6060

**Your Requested Excerpt from the
Agilent System and Bench Instruments Catalog 2006**

The preceding page(s) are an excerpt from the 2006 System and Bench Instruments Catalog. We hope that these pages supply the information that you currently need. If you would like to have further information about the extensive selection of Agilent DC power supplies, please visit www.agilent.com/find/power to print a copy of the complete catalog, or to request that a copy be sent to you. You will also find a lot of other useful information on this Web site.

In the full System and Bench Instruments Catalog, you will find that Agilent offers much more than DC power supplies. This catalog contains detailed technical and application information on digital multimeters, DC power supplies, arbitrary waveform generators, and many more instruments. If you need basic, clean, power for your lab bench, it's there. In each power product category we have also integrated the capabilities you need for a complete power solution, including extensive measurement and analysis capabilities.

Please give us a call at your local Agilent Technologies sales office, or call a regional office listed, for assistance in choosing or using Agilent power products.

Keep up to date with Agilent's Test and Measurement Email Updates

As an Email Update subscriber, you will receive periodic customized email updates that match the areas of interest that you have specified. Your update will include products and services, applications and support information, events and promotions. Sign up today at www.agilent.com/find/emailupdates. Check off DC power supplies, AC power sources or electronic loads on your registration form, and we will promptly let you know what's new in power products. Our Privacy Statement at www.agilent.com/go/privacy describes our commitment to you regarding your privacy.

www.agilent.com

For more information on Agilent Technologies' products, applications or services, please contact your local Agilent office. The complete list is available at:

www.agilent.com/find/contactus

Phone or Fax

United States:

(tel) 800 829 4444

(fax) 800 829 4433

Canada:

(tel) 877 894 4414

(fax) 800 746 4866

China:

(tel) 800 810 0189

(fax) 800 820 2816

Europe:

(tel) 31 20 547 2111

Japan:

(tel) (81) 426 56 7832

(fax) (81) 426 56 7840

Korea:

(tel) (080) 769 0800

(fax) (080) 769 0900

Latin America:

(tel) (305) 269 7500

Taiwan:

(tel) 0800 047 866

(fax) 0800 286 331

Other Asia Pacific Countries:

(tel) (65) 6375 8100

(fax) (65) 6755 0042

Email: tm_ap@agilent.com

Contacts revised: 09/26/05

Product specifications and descriptions in this document subject to change without notice.

© Agilent Technologies, Inc. 2006

Printed in the USA, February 8, 2006



Agilent Technologies