



# TELECOMMUNICATIONS RENTAL CATALOG

RENT FROM THE  
**LARGEST TELECOMS**  
INVENTORY IN EUROPE

THE LATEST TECHNOLOGY  
**FROM ALL THE LEADING**  
MANUFACTURERS

**ALL THE TOP**  
BRANDS UNDER  
ONE ROOF

**REDUCE THE COST**  
OF ACQUIRING TEST  
EQUIPMENT

See a selection of products **available now**, inside...

# Contents

<b>Copper Certification Test .....</b>	<b>4</b>
Fluke Networks DSX2-5000 .....	4
Fluke Networks DSX2-8000 .....	4
Fluke Networks DSX2-8000QOI .....	4
Viavi Solutions NGC-4500-FA .....	4
Viavi Solutions ONX-630 .....	4
<b>Telecom – Drive Test.....</b>	<b>5</b>
PCTEL IBFlex .....	5
PCTEL GFlex .....	5
PCTEL HBFlex P2 Configuration .....	5
Rohde & Schwarz TSME6 .....	5
Rohde & Schwarz ROMES4 .....	5
<b>Fiber Optic Test – Fusion Splicers .....</b>	<b>6</b>
Fujikura (AFL) 90S+ .....	6
Fujikura (AFL) FSM90R12-K .....	6
Sumitomo 72C+ .....	7
Sumitomo T-502S .....	7
<b>Fiber Optic Test – Optical Loss Test Sets.....</b>	<b>8</b>
EXFO FTBX-945 .....	8
EXFO MaxTester 945P .....	8
Fluke Networks CFP2-100 .....	8
Viavi Solutions MPOLX .....	8
<b>Fiber Optic Test – OTDRs .....</b>	<b>9</b>
EXFO MAX-720C-Q1-QUAD .....	9
EXFO MAX-730C-SM1-XX .....	9
EXFO MAX-730C-SM2-XX .....	9
Fluke Networks OFP2-100 .....	10
Viavi Solutions E4126B-APC .....	10
Viavi Solutions E4136C-APC .....	10
Viavi Solutions E41DWDMC-PC .....	10
<b>Fiber Optic Test – Inspection .....</b>	<b>11</b>
EXFO FIP435B .....	11
Viavi Solutions FIT-FCSW-KIT2 .....	11
<b>Ethernet Test .....</b>	<b>12</b>
EXFO FTBX-88460-400GE .....	12
Viavi ONA-10-400GE-NOPT .....	12
EXFO MAX-890-ETH-100 .....	12
Viavi Solutions MTS5800-100GE .....	12
EXFO FTBX-8880 .....	13
<b>5G Tower Test .....</b>	<b>14</b>
Viavi Solutions (3Z) RFV2000 .....	14
Anritsu MW82119B .....	14
Anritsu S361E .....	14
Anritsu S362E .....	15
EXFO FTBX-88260-FR1 .....	15
Viavi Solutions SPA06MA .....	15
Anritsu MS2720T-709 .....	15

# Best Practices for Fiber Testing and Essential Tools

## Testing of Connectors and Connections

Fiber connectors are key components in the network and can be a source of loss, particularly if they become contaminated, causing their optical loss to exceed budget. Contaminants can arise from several sources, including dust, oil from hands and mineral oils. A dust particle on the fiber core surface will block the light, leading to unacceptable insertion loss and back reflection (return loss). Dust particles can also cause permanent damage to the glass interface, digging into the glass and leaving pits that create back reflection if mated.

It is therefore extremely important to inspect fiber connectors during installation to ensure cleanliness. Because of their small size, proper inspection requires a microscope specifically designed for the fiber-optic end face. A video microscope can magnify the connector end face image for viewing on either a laptop or portable display, depending on the product used. These fiber inspection tools can also assist in generating required reports before fiber certification is completed.

## Testing Using an OTDR (Optical Time Domain Reflectometer)

OTDRs work by injecting optical pulses into the fiber under test and measuring the light that is reflected from various points along the fiber. The reflected light is used to characterize the fiber under test with the strength of the return pulses being integrated against time and plotted as a function of fiber length. By using an OTDR at various points in the network, the feeder and distribution sections of the network can be tested independently. The OTDR can identify and locate each network component and can measure splice loss, connector loss and reflectance along with total end-to-end loss and optical return loss (ORL). The tests must be performed using two wavelengths, enabling detection of bends on the link, which give higher losses at 1550 nm than at 1310 nm.

In addition to using the OTDR as a qualification tool, it can also be used as a troubleshooting tool to pinpoint issues along the link. OTDR features like accuracy, resolution, measurement range and measurement speed vary according to their cost and there is a wide range of OTDR models on the market, each addressing different test and measurement needs. The suitability of an OTDR for a specific test scenario depends on several factors, including type of network, type of fiber (singlemode or multimode), maximum test distance and test types. Other factors to consider include size and weight, display size, battery life, data storage, connectivity, post-processing software and available upgrade modules.

## Testing Using an OLTS (Optical Loss Test Set)

Optical Loss Test Sets, (OLTS), can be used in pairs, to measure insertion loss, (IL), and optical return loss (ORL). Once the pair of units have been referenced and calibrated, they can be used to take end-to-end measurements on any section of installed fiber. These tests enable verification of the IL and ORL variables and can identify any transposed fibers. Identification of mis-matched fibers is especially important when testing MPO fibers and connectors. Testing using an OLTS is simpler than with an OTDR, but two technicians are required, at different physical locations and if any problems are identified, an OTDR may be required for more detailed analysis.



**Fluke Networks DSX2-5000 | RENT NOW ✓**  
 DSX Cable Analyzer V2 with WiFi; 1 GHz Copper Modules

- DSX Cable Analyzer Series Copper Cable Certifiers
- Unmatched Speed for CAT6A, Class FA, I/II and all Current Standards
- Analyze Test Results and Create Professional Test Reports Using LinkWare Management Software



**Fluke Networks DSX2-8000 | RENT NOW ✓**  
 DSX Cable Analyzer V2 without WiFi; 2 GHz Copper Modules

- Unmatched Speed for CAT6A, 8, Class FA, I/II and All Current Standards
- Modular Design Supports Copper Certification
- Taptive User Interface Simplifies Set-up, and Eliminates Errors
- Intertek Verified to TIA Level 2G
- Copper Cable Certifiers Endorsed by Cabling Vendors Worldwide



**Fluke Networks DSX2-8000QOI | RENT NOW ✓**  
 Full Cable Analyzer, OTDR, OLTS Test Kit All in One

- Quad OTDR, Quad OLTS, DSX-8000V2 Cable Analyzer 2 GHz CAT8 with Fiber Inspection Tool and WiFi Integrated
- Unmatched Speed for CAT6A, 8, Class FA, I/II and All Current Standards
- Versiv Modular Design Supports Copper Certification
- ANSI/TIA-1152-A Level 2G



**Viavi Solutions NGC-4500-FA | RENT NOW ✓**  
 Certifier 40G NGC-4500 with Class FA Copper Kit

- Test and Certify Copper up to Category 6A
- PC Based Software
- Reporter Also Supports Other Viavi Test Solutions Including the OLTS-85, MPOLx, and OTDR Traces from the Viavi T-BERD/MTS-2000
- Supports P5000I Inspection Tool



**Viavi Solution ONX-630 | RENT NOW ✓**  
 OneExpert CATV ONX-630 D31 enabled Meter 65/204MHz - 1.2G/1.2G - SWX PKG

- Troubleshooting QAM carriers/home networks
- Real-time channel identification eliminates the need for channel plans and plan-related errors
- 32x8 DOCSIS® 3.0, DOCSIS 3.1, WiFi, 1 Gigabit Ethernet capable, and TrueSpeed™ option
- A unique dual-duplexer design supports 65/204 MHz networks





**PCTEL IBFlex | RENT NOW ✓**

Drive Test Scanner; 570 MHz to 3.8 GHz

- 4G/5G dynamic spectrum sharing (DSS) support
- 2x2 and 4x2 LTE MIMO measurements
- Connect with Bluetooth or USB
- Blind scan simplifies test setup by automatically detecting channels
- Spectrum analysis and channel power measurements for any wireless technology



**PCTEL GFlex | RENT NOW ✓**

5G Scanning Receiver; 10 MHz to 8 GHz

- Measures up to 120 5G channels
- Ultra-fast concurrent 5G/4G testing
- 20/100 MHz wide step IF filter
- I/Q streaming ready hardware
- 5G mobile blind scan
- Dual polarization beamforming measurements
- 4G / 5G Dynamic Spectrum Sharing (DSS)
- 4 x 2 MIMO Measurements
- Upgradable to mmWave FR2 Bands



**PCTEL HBFlex P2 Configuration | RENT NOW ✓**

5G Drive Test Scanner

- Includes all FR1 bands and all FR2 band licenses, all E-UTRA bands in the 10 MHz to 6 GHz range and:
- GSM, WCDMA, CDMA, EV-DO, TD-LTE, FD-LTE, Wi-Fi, NB-IoT, LTE-LAA, Wi-Fi, 3GPP 5G NR, with CDMA and EVDO holdover (software licenses required)
- mmWave measurements 26 GHz to 40 GHz in FR2 bands
- All existing 2G, 3G, and 4G bands
- Multi-Application Spectrum clearing Interference management Baseline testing
- Integration testing, Optimization testing, Operational troubleshooting



**Rohde & Schwarz TSME6 | RENT NOW ✓**

5G Ultracompact Drive Test Scanner; 350 MHz to 6 GHz

- Different multiband and multi-technology scanners
- Ideal for verifying the coverage of all networks at once
- Decodes channels in multiple technologies
- Frequency coverage up to 6 GHz (24-44 GHz with TSME30DC / TSME44DC downconverter)
- Support for up to 4 x 4 MIMO measurements



**Rohde & Schwarz ROMES4 | RENT NOW ✓**

Drive Test Software

- ROMES4 is the universal software platform for network engineering, network optimization and troubleshooting. In combination with test mobile phones and drive test scanners it provides solutions for all essential tasks involved in coverage measurements, interference identification and QoS.
- Supports Rohde & Schwarz TSME6 and TSMA6 scanners
- Supports latest technologies, such as 5G, Nb-IoT and Cat-M1
- Supports test smartphones, with on-device test capabilities
- 5G NR, GSM, WCDMA, CDMA2000®, 1xEV-DO, WiMAX™, LTE, NB IoT, Cat-M1 and TETRA
- ACD, Sector and BTS position estimation, NB-IoT/LTE-M, Dynamic Spectrum Sharing, Time of Arrival measurements



**Fujikura (AFL) 90S+ | RENT NOW ✓**  
Core Alignment Fusion Splicer

- Core Alignment Technology Achieves Consistent Lower Splice Loss
- Average Splice Loss of 0.01 to 0.04dB
- Tool-Less Replaceable Electrodes
- Ships with CT-50 Cleaver, Carry Case, and 90S Standard Package Accessories
- Cleaver Tracking and Upkeep with Wireless Communication
- Improved Real-Time Arc Control for Fibers with Poor Cleave Angles
- Distribution Fiber Repair
- Long-Haul Network Installation
- OSP Cable Installation and Repair



**Fujikura (AFL) FSM90R12-K | RENT NOW ✓**  
Fusion Ribbon Splicer Kit with CT50

- Prepare and Fuse up to 12 Fibers at a Time
- Same Core Alignment Technology Expanded to 12 Fibers
- Tool-Less Replaceable Electrodes
- Automated Wind Protector, Tube Heater and Splice Operation
- Ships with CT-50 Cleaver, Carry Case, and FSM90R Standard Package Accessories
- Data Center Cable Installation
- Trunk Cable Repair with Splice-on MPOs



**Sumitomo 72C + | RENT NOW ✓**

High-Definition Core Aligning Fusion Splicer

- 5s splice time in 'SM Quick' mode
- 7s splice time 'SM G652 Std' mode
- 7s splice time in 'Auto' mode
- 8s heat shrink time with FPS-61-2.6 sleeve in 'S60mm 0.25 Quick' mode
- Automatic detection of fibre type and optimisation of arc conditions
- P52 rated, plus display is IK07 impact resistance rated



**Sumitomo T-502S | RENT NOW ✓**

Active Clad Alignment Fusion Splicer Kit with FC-6R+ Cleaver

- Powered by the NanoTune™ AI technology, which greatly improves splicing efficiency and accuracy regardless of operational condition and user skill.
- Provides accurate estimated loss by analyzing the fiber image through high-quality microscopes during splicing.
- Introduces fiber type detection function to an active cladding alignment splicer. This allows the T-502S to distinguish between MMF and SMF fiber types and ensure use of the correct splice program.
- SumiCloud™\*3 adds wireless LAN connectivity\*4 to the T-502S



**EXFO FTBX-945** | **RENT NOW** ✓

Fiber Certifier Optical Loss Test Set

- Optimized for Data Center and Enterprise Tier-1 Fiber Certification
- Onboard PDF Reporting Converts Multiple Measurements into a Single Standardized Format
- Standard Enhanced Flux Multimode Light Source
- Packaged with FTB-1V2-Pro Compact Platform



**EXFO MaxTester 945P** | **RENT NOW** ✓

Fiber Certifier Optical Loss Test Set 1310/1550 nm

- Optimized for Data Center and Enterprise Tier-1 Fiber Certification
- FastTest Performance Certifies Two Fibers at Two Wavelengths in 2.6 Seconds
- Instrument Pairs or Singles Available
- Automated Fiber Inspection with Pass/Fail Results on Both Fiber End-Faces
- Onboard PDF Reporting



**Fluke Networks CFP2-100** | **RENT NOW** ✓

Certifier Pro V2, with WiFi (OLTS)

- Tier-1 Certification of Fiber Cables
- Single Mode, Multimode and Quadmode OLTS with 850, 1300, 1310, 1550nm Wavelengths
- Power range: 0dBm to -65dBm (850nm) 0dBm to -70dBm (All Other Wavelengths)
- Compact Fluke Networks Versiv V2 mainframe
- Integrated USB and WiFi for reporting and project management
- Models Available with Included Inspection Probes



**Viavi Solutions MPOLX** | **RENT NOW** ✓

SmartClass Fiber MPO Optical Loss Test Set

- Measures Optical Loss on MPO Type Fiber Connections
- Quadmode OLTS with 850, 1300, 1310, 1550nm Wavelengths
- Certifies All Fibers in MPO Connection and Checks MPO Polarity
- Includes Two P5000i Fiber Inspection Probes
- Integrated USB and WiFi for Reporting and Project Management



**EXFO MAX-720C-Q1-QUAD** | **RENT NOW** ✓

MaxTester QUAD OTDR Module; 850/1300, 1310/1550

- Dynamic range of up to 36 dB in singlemode and 29 dB in multimode
- Fully featured and integrated field test solution
- Access network construction and troubleshooting



**EXFO MAX-730C-SM1-XX** | **RENT NOW** ✓

MaxTester PON/Metro OTDR; 1310/1550 nm

- Dynamic range: 39/38 dB
- FTTx/PON testing through splitters (up to 1x128)
- iOLM-ready: intelligent and dynamic application that turns complex OTDR trace analysis into a one-touch task
- Handy, lightweight, powerful, tablet-inspired design



**EXFO MAX-730C-SM2-XX** | **RENT NOW** ✓

MaxTester PON/Metro OTDR; 1310/1550 nm and 1625 nm live

- Dynamic range: 39/38/39 dB
- FTTx/PON testing through splitters (up to 1x128)
- iOLM-ready: intelligent and dynamic application that turns complex OTDR analysis into a one-touch task
- Handy, lightweight, powerful, tablet-inspired design





**Fluke Networks OFP2-100 | RENT NOW ✓**

Optifiber Pro OTDR V2 with Built in WiFi

- Good for Both Enterprise, Data Centers, Outside Plant, or FTTx Applications
- Single Mode, Multimode and Quadmode OTDR with 850, 1300, 1310, 155nm Wavelengths
- Compact Fluke Networks Versiv V2 mainframe
- Integrated USB and WiFi for Reporting and Project Management



**Viavi E4126B-APC | RENT NOW ✓**

4100 Module B OTDR; 1310/1550 NM, PC/APC

- 42dB dynamic range
- PON up to 1:128
- Compatible with the newest Viavi platforms (T-BERD/MTS-2000 V2, T-BERD/MTS-4000 V2, T-BERD/MTS-5800, OneAdvisor, CellAdvisor 5G)



**Viavi E4136C-APC | RENT NOW ✓**

E4136C-APC;4100 MODULE C OTDR - 1310/1550/1625 NM – APC

- 45dB dynamic range
- PON up to 1:256
- Compatible with the newest Viavi platforms (T-BERD/MTS-2000 V2, T-BERD/MTS-4000 V2, T-BERD/MTS-5800, OneAdvisor, CellAdvisor 5G)



**Viavi Solutions E41DWDMC-PC | RENT NOW ✓**

Tunable DWDM PC OTDR - C-BAND

- Packaged with OneAdvisor ONA-800A
- End-to-End Link Characterization
- OTDR Trace interpretation is also simplified with the Smart Link Mapper (SLM)
- Validating New WDM routes for New Customers or Capacity Increases
- Verifying End-to-End Continuity Prior to Service Turn-up

## Tech Tip

### Clean and Inspect Before You Connect

Dirty and/or damaged fiber connectors are one of the most common causes of optical network problems. When operators operate under amplified OPEX pressure and must speed up fiber deployments, preventing any network failures can make a difference. Inspection and cleaning are essential to successful fiber installation. We have the tools you need to get the job done right.

#### EXFO FIP435B | RENT NOW ✓

Wireless Analysis Digital Video Inspection Probe

- Complete Connectivity and Workflow Aided by Android or iOS Wireless Devices
- 100% Automated, One-Step Inspection Process
- High-Resolution 5 Megapixel CMOS Imager to Capture Every End-Face Detail
- Full Reporting Capabilities on Mobile Devices
- Onboard Rechargeable Battery Supporting a Full Day of Inspection and Preventing Your Smart Device to Drain its Charge
- Ideal Inspection Solution for Fiber-to-the-Antenna (FTTA) and Remote Radio Head (RRH) Applications Where Tower Climbers



#### Viavi Solutions FIT-FCSW-KIT2 | RENT NOW ✓

FiberCheck Sidewinder Probe Kit with WiFi and Adapters

- Fast and easy MPO inspection solution. Check 12 MPO Fibers in 12 Seconds
- 100% Automated, One-Step Inspection Process for All Skill-Levels
- Built-in Fiber End-Face Analysis
- Integrated Touch Screen
- Live Fiber Viewing
- WiFi, and USB Connection to a PC and Mobile Device
- Built in Acceptance Criteria to Industry Standards (IEC-61300-3-35)
- Audible Sounds for Pass/Fail Results
- Auto-Pan/Scroll





**EXFO FTBX-88460-400GE | RENT NOW ✓**  
400G Multi-Service Power Blazer

- 400GE Portable System
- Windows Based OS
- Supports QSFP-DD Transceiver
- Packaged with FTB-4-PRO Base Mainframe
- FEC Testing
- BER Monitoring



**Viavi ONA10-400GE-NOPT | RENT NOW ✓**  
OneAdvisor-1000 400G Portable Network Tester

- Portable Test Unit up to 400Gb Ethernet
- PAM4 native support provided via connectors and interfaces also to test 400GE
- Complete support of protocols including Ethernet, OTN, SONET/SDH, PDH, Fibre Channel, CPRI, and eCPRI
- Pairs with the VIAVI 4100-Series OTDR and WDM Channel Checker/OSA modules



**EXFO MAX-890-ETH-100 | RENT NOW ✓**  
MAXTester 890: 10M-to-100G Multi-Service Unit

- 100GE Package with Multiple Data Speeds Available
- Supports Multiple Transceivers
- Industries Fastest RFC 2544
- QSFP+/QSFP28 and CFP4 Modules Run Error-Free



**Viavi Solutions MTS5800-100GE | RENT NOW ✓**  
TB 5800-100G Base 100GE Package Supports LR4 QSFP28

- 100GE Portable Test Unit
- Windows 10
- RFC2544
- Smart Loop Test
- Supports VIAVIs 4100-Series OTDR and COSA Modules



**EXFO FTBX-8880** | **RENT NOW** ✓

10G Power Blazer Multi-Service Set

- 10GE Module and Mainframe System
- Fibre Channel from 1-10
- LAN/WAN Capable Test
- Packaged with FTB-1v2-Pro Mainframe
- Carrier Approved



**Viavi Solutions TB/MTS5822P** | **RENT NOW** ✓

10Mbps to 10G Handheld Network Tester, TB/MTS-5822P

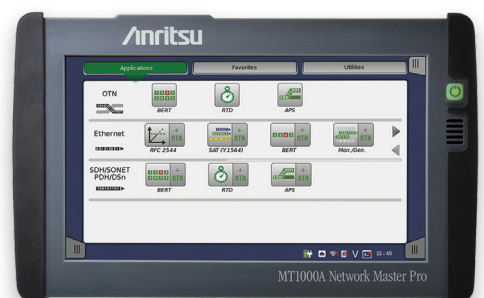
- 10Mbps to 10GE Capable Dual Port Handheld Network Tester
- Dual 10Mbps to 10Gbps Interfaces
- RFC2544
- SONET/SDH Capable
- Battery Operated
- Carrier Approved



**Anritsu MT1000A** | **RENT NOW** ✓

Network Master Pro Mainframe

- 10GE Module and Mainframe System
- Fibre Channel from 1-10
- OTDR and 10G Transport/CPRI Module Can be Simultaneously Installed
- CPRI/OBSAI (1-8)
- Battery Operated
- Carrier Approved





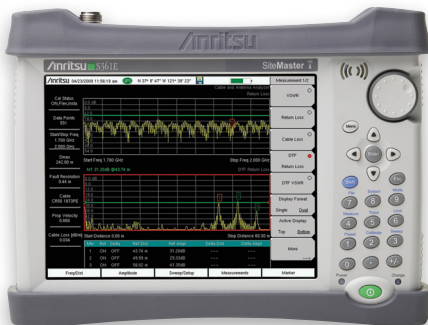
**Viavi Solutions (3Z) RFV2000** | **RENT NOW ✓**  
Vision Antenna Alignment Tool

- Industry Leading Performance
- Built-in Camera
- Easy File Export
- Augmented Reality Displays a Bullseye Target in the 5-inch LCD Touch Screen Display
- Carrier Approved



**Anritsu MW82119B** | **RENT NOW ✓**  
PIM Analyzer; 40W, Battery Operation

- Multiple Bands Available 600MHz, 700MHz, 850MHz, 900MHz, 1800MHz, 1900/2600MHz
- 40W Output Power
- Battery Operated
- Calibration Kits Available in Backpack and Hardcase Form



**Anritsu S361E** | **RENT NOW ✓**  
Site Master Handheld Cable and Antenna Analyzer; 2 MHz to 6 GHz

- Battery Operated
- Carrier Approved
- 4GHz and 6GHz available
- Touch Screen
- Easy USB Data Transfer
- Onboard Reporting

**Anritsu S362E | RENT NOW ✓**

Site Master Handheld Cable and Antenna Analyzer; 2 MHz to 6 GHz

- Dual Port Capable with Option 21
- 4 hour Battery Life
- Easy Reporting
- With 100 kHz to 6 GHz Spectrum Analysis

**EXFO FTBX-88260-FR1 | RENT NOW ✓**

RF Spectrum Analyzer; 450 MHz to 6 GHz with RTSA

- Spectrum Analyzer, and TDD Gated Sweep, With TA-FR1 and FTBX-88260 System
- 5G FR1 Enabled Real Time Spectrum Analyzer
- FR2 Module Available Separately

**Viavi Solutions SPA06MA | RENT NOW ✓**

RF Spectrum Analyzer; 9 kHz to 6 GHz

- Bundled with ONA-800
- DANL to +25dBm
- 100 MHz Real-time Bandwidth
- Carrier Approved

**Anritsu MS2720T-709 | RENT NOW ✓**

Spectrum Master Spectrum and Interference Analyzer; 9 kHz to 9 GHz

- High Performance Spectrum Analysis
- FirstNet Approved
- Portable and Battery Operated







You can reach us at **020 8420 0200** or email **[info.eu@electrorent.com](mailto:info.eu@electrorent.com)**.

Our experts are here to help you access the equipment you need in the most cost effective way.



Unit 1 & 2, waverley industrial park,  
Hailsham Dr, Harrow HA1 4TR

020 8420 0200  
[electrorent.com](http://electrorent.com)

Electro Rent © 2022 All Rights Reserved

