

Types of Student Accommodation for:



SHORT STAY - FURNISHED

*Apply
now!*



VU 

Student Accommodation Guide

This document will inform you about the different types of student accommodation we have on offer. All rooms are fully furnished. With this document, we will guide you in choosing the right accommodation for you. Firstly, we give you some characteristics to think about, such as facilities and locations. Secondly, we will provide you with detailed information about each room type, such as rental prices, pictures and room size. Note that all rooms are available for a maximum period of one academic year!

HOUSING CORPORATIONS

VU Amsterdam works with several housing corporations. These housing corporations offer various room types at several locations in Amsterdam.

| Housing Corporation | Location / Building name | Av. Price* | One-time fee | Housing allowance |
|---------------------------|--------------------------|------------|--------------|-----------------------|
| DUWO Short stay | Uilenstede 102 – shared | €428 | €208,50 | Not possible |
| | Uienstede 102 – private | €634,22 | €231 | Possible ≥ 18 |
| | Uilenstede 174 until 222 | €440,92 | €208,50 | Possible ≥ 18 |
| | Cornelis Lelylvlaan | €585,09 | €231 | Possible ≥ 23 |
| | Krelis Louwenstraat | €593,25 | €231 | Possible ≥ 23 |
| | Pierre Lallementstraat | €600,27 | €231 | Possible ≥ 23 |
| | De Boeieleaan | €511 | €208,50 | Not possible |
| OurDomain | Amsterdam Diemen | €1063,15 | €100 | Not possible |
| OurCampus | Amsterdam Diemen | €1039,29 | €100 | Limited Possible ≥ 23 |
| Lieven de Key | BOLD | €723,22 | €150 | Possible ≥ 18 |
| Mosaic World | De Flier | €1025 | €15 | Possible ≥ 23 |
| | WASA Student Village | €788,15 | €15 | Possible ≥ 23 |
| Rockfield | StuNest Spartaan | €837 | €240 | Possible ≥ 23 |
| Student Experience | Minervahaven | €1115 | €50 | Not possible |

*Rent prices in the document are subject to change, new rental prices will be determined in May 2024. The rent increase follows the inflation standard and will be around 5% plus possible VAT increase. Please note, due to the energy crisis in Europe the expectation is that there will be an increase in the service costs! The current service costs are included in the average price. Please note the prices in this document are subject to change.

BUDGET

The price of accommodation varies between €419 and €1200 per month. Utilities (water/ electricity/ internet) are included in the price. Choosing one of the cheaper options normally means you will have a room with shared facilities (kitchen and/or bathroom).

HOUSING ALLOWANCE

Housing allowance (huurtoeslag) is a subsidy provided by the Dutch government to tenants with a low income and a relatively high cost of rent. Some of the student rooms we provide qualify for housing allowance. Find out more about which housing types are eligible on the following pages. For more general information about housing allowance and whether you are eligible for this subsidy, please visit this [link](#).

CONDITION OF THE BUILDING

If you prefer a modern, clean and relatively new building, we advise you to choose accommodation at other locations than Uilenstede. For the buildings at Uilenstede it is important to note that most of them were built in the 1970s, although some of them have been renovated in recent years. In general, this location is suitable for students who are looking for budget accommodation.

FACILITIES

As a student in the Netherlands, it is very common to have your own bedroom while sharing your facilities (kitchen and/or bathroom). We have a wide range of options available in terms of shared/private facilities. Below you can find a quick overview:



| Housing corp. | Room type | Bedroom | Bathroom | Kitchen |
|---------------------------|--------------------------|---------|-----------------------------------|--|
| DUWO | Uilenstede 174 until 222 | Private | Private | Shared with 13 other students |
| | De Boelelaan | Private | Shared with 4 or 6 other students | Shared with 4 or 6 other students |
| | Uilenstede 102 | Private | Shared with 1 student or private | Shared with 1 other student or private |
| | Krelis Louwenstraat | Private | Private | Private |
| | Cornelis Lelylaan | Private | Private | Private |
| | Pierre Lallemeentstraat | Private | Private | Private |
| OurDomain | Amsterdam Diemen | Private | Private | Private |
| OurCampus | Amsterdam Diemen | Private | Private | Private |
| Lieven de Key | BOLD | Private | Private | Private |
| Mosaic World | De Flier | Private | Private | Private |
| | Wasa | Private | Private | Private |
| Rockfield Stunest | Spartaan | Private | Private | Private |
| Student Experience | Minervahaven | Private | Private | Private |

SOCIAL VS. PRIVATE

If your plan is to meet many students, have dinners and/or drinks together, we advise you to choose a room with shared facilities (kitchen and/or bathroom). If you rather prefer a more private environment, we suggest you book a (self-contained) studio. If you prefer both, our advice would be to book a studio at Uilenstede, which is our largest housing campus where you can find a lively student community and many student facilities. Generally speaking, there is less social interaction between students at other locations.

LOCATIONS

We have student accommodation available at different locations in Amsterdam. Although you might be dreaming of living in the city center with its canals and tall houses, you may wish to reconsider since it is mostly wealthy Dutch people or tourists staying there.

In contrast to the city center, Uilenstede is located in a green area in between two parks and close to the Amsterdam forest (Amsterdamse Bos). Krelis Louwenstraat, Cornelis Lelylaan, Mosaic World, and StuNest are located in the Western part of town. Pierre Lallementstraat is located in the East area of Amsterdam, and is considered to be more multicultural. Please note that De Boelelaan/Groningenstraat is accommodation in a residential area and not suitable for parties. On the other hand, De Boelelaan/Groningenstraat is very close to the university campus of VU Amsterdam.

OurCampus/OurDomain Amsterdam Diemen is located in the adjacent town of Diemen in the South-east. Finally, BOLD is located across the river IJ in the upcoming North area. Student Experience is an innovative full service concept that offers sustainable housing for students from all backgrounds. A place where you can fully focus on your studies while enjoying student life to the fullest. Mosaic World has two different locations, WASA student village and a newly built building called De Flier (opened in July 2023).

On the map, you will find an overview of where these buildings are located in Amsterdam. In terms of logistics, please view the tables below:



| Distance to VU | Walk | Bike | Public Transportation |
|---------------------------------|---------|--------|-----------------------|
| Uilenstede | 20 min | 7 min | 10 min |
| De Boelelaan | 10 min | 4 min | - |
| Pierre Lallementsstraat | 60 min | 20 min | 20 min |
| Cornelis Lelylaan | 55 min | 15 min | 25 min |
| StuNest Spartaan | 55 min | 20 min | 25 min |
| Krelis Louwenstraat | 80 min | 30 min | 35 min |
| OurCampus Amsterdam Diemen | 90 min | 25 min | 23 min |
| OurDomain Amsterdam Diemen | 90 min | 25 min | 23 min |
| Mosaic World de Flier | 90 min | 30 min | 30 min |
| Mosaic World WASA | 90 min | 30 min | 25 min |
| BOLD | 90 min | 30 min | 30 min |
| Student Experience Minervahaven | 110 min | 35 min | 40 min |



| Distance to City Center | Walk | Bike | Public transportation |
|---------------------------------|---------|--------|-----------------------|
| Uilenstede | 90 min | 30 min | 35 min |
| De Boelelaan | 65 min | 25 min | 30 min |
| Pierre Lallementsstraat | 50 min | 15 min | 20 min |
| Cornelis Lelylaan | 60 min | 20 min | 25 min |
| StuNest Spartaan | 55 min | 20 min | 25 min |
| Krelis Louwenstraat | 55 min | 20 min | 30 min |
| OurCampus Amsterdam Diemen | 90 min | 25 min | 20 min |
| OurDomain Amsterdam Diemen | 90 min | 25 min | 20 min |
| Mosaic World de Flier | 110 min | 25 min | 25 min |
| Mosaic World WASA | 90 min | 30 min | 25 min |
| BOLD | 20 min | 10 min | 20 min |
| Student Experience Minervahaven | 70 min | 20 min | 40 min |

Map of Amsterdam



COUPLES ROOMS

We have very limited rooms available for couples. Most of the couples rooms are part of DUWO Accommodate and are located at Pierre Lallementstraat, Cornelis Lelylaan and Uilenstede. For more information about couples rooms and how to apply please have a look at the couple rooms brochure or email studentaccommodation@vu.nl for more information.

HOW TO APPLY

In your personal dashboard on vu.nl, you can register for housing and complete your application by selecting your preferred budget category and paying the housing fee. Please note that the budget you choose has no effect on your actual booking in any way. When booking your room, you can also choose outside of your indicated budget.

Keep in mind that housing is in high demand and that the number of rooms available is limited. The International Office will do its utmost best to find suitable accommodation for everyone, but housing is not guaranteed for every student (max 45% of incoming students). We can also not guarantee housing at any specific location or within a specific budget category. We work with a first paid, first-served system, so the sooner you pay the housing fee, the more chances you will have in securing your preferred accommodation.

On the next pages, you can find an overview of the different types of accommodation with pictures, rental prices and sometimes a link to a video. Based on the criteria above, your priorities and the information on the following pages, you should be able to decide which room will meet your needs. In case you would like assistance with this, please send us an e-mail at studentaccommodation@vu.nl or schedule a phone call in our [online tool](#).

Housing Corporations & Room types

| | |
|---|-----------|
| <u>DUWO Short Stay</u> | <u>7</u> |
| • <u>Uilenstede 102 shared</u> | <u>8</u> |
| • <u>Uilenstede 102 private</u> | <u>9</u> |
| • <u>Uilenstede 174 until 222</u> | <u>10</u> |
| • <u>De Boelelaan / Groningenstraat</u> | <u>11</u> |
| • <u>Cornelis Lelylaan</u> | <u>12</u> |
| • <u>Krelis Louwenstraat</u> | <u>13</u> |
| • <u>Pierre Lallementstraat</u> | <u>14</u> |
| | |
| <u>Rockfield: StuNest</u> | <u>15</u> |
| | |
| <u>OurCampus Amsterdam Diemen</u> | <u>16</u> |
| | |
| <u>OurDomain Amsterdam Diemen</u> | <u>17</u> |
| | |
| <u>Mosaic World – De Flier</u> | <u>18</u> |
| | |
| <u>Mosaic World – Wasa</u> | <u>19</u> |
| | |
| <u>The Key: BOLD</u> | <u>20</u> |
| | |
| <u>Student Experience: Minervahaven</u> | <u>21</u> |

DUWO SHORT STAY



For many years, the DUWO Foundation has been the provider of student rooms in Amsterdam and various other cities in the Netherlands. With nearly 32,000 student rooms, DUWO is the largest student accommodation specialist in the Netherlands. The following 9 pages will provide information about the various room types reserved at DUWO.

RENTAL PERIOD

These room types have a fixed rental period of one full academic year (mid-Aug to mid-Aug). Contracts cannot be shortened or extended.

ADMINISTRATIVE FEE & FIRST INSTALLMENT

Please note that for every room type you have to make a one-time administrative fee payment (which is non-refundable), this payment varies per housing provider and the exact costs can be viewed on page 1. This payment includes contract costs, cleaning service, bed linen and kitchen packages. Moreover, the first instalment for all accommodation types at DUWO consists of 3 months of rent (the first and last two months of your contract).

STANDARD INVENTORY

At least the below-mentioned items should be present in your room. The model of an item may differ from room to room.

ROOM

- Waste basket
- Wardrobe
- Bookcase
- Simple chair
- Desk lamp
- Small table
- Desk and office chair
- Window coverings
- Wi-Fi connection

BED

- 2 standard single beds + mattresses (90x200cm)
- pillows
- pillowcases
- duvets
- duvet covers with tuck-in strip
- fitted sheets
- moltons

TOILET/BATHROOM

- Toilet brush

KITCHEN

- Hot plate
- Garbage bin
- Refrigerator



UILENSTEDE 102 – SHARED



Rental Price:

€ 419,78 - € 436,22 per month*

| | |
|-------------------|--------------|
| Housing Allowance | Not eligible |
|-------------------|--------------|

| | |
|---------|--------------------------------------|
| Bedroom | Private (16,5 m2 without balcony) |
|---------|--------------------------------------|

| | |
|----------|-----------------------------------|
| Bathroom | Shared with 1 same gender student |
|----------|-----------------------------------|

| | |
|---------|-----------------------------------|
| Kitchen | Shared with 1 same gender student |
|---------|-----------------------------------|

| | |
|----------------|-----------------------------|
| Washing/Drying | In building (coin operated) |
|----------------|-----------------------------|

| | |
|---------|--------------|
| Parking | Free on site |
|---------|--------------|



[Click for video tour!](#)



[View on Google Maps](#)



UILENSTEDE 102 - PRIVATE

Rental Price:

€ 628,89 - €639,46 per month*

Housing
Allowance

Eligible, if you are ≥ 18

Bedroom

Private
(23,40 m² – 25,50 m²)

Bathroom

Private

Kitchen

Private

Washing/Drying

In building (coin operated)

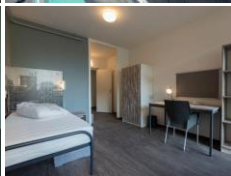
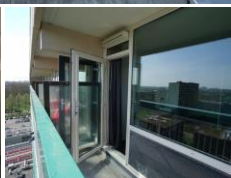
Parking

Free on site



[View on Google Maps](#)





UILENSTEDE 174 - 222

Av. Rental Price:
€440,92 per month*



[Click for video tour!](#)



[View on Google Maps](#)

| | |
|-------------------|--------------------------------|
| Housing Allowance | Eligible, if you are ≥ 18 |
|-------------------|--------------------------------|

| | |
|---------|--|
| Bedroom | Private room (12,8m ²), connected to balcony |
|---------|--|

| | |
|----------|---------|
| Bathroom | Private |
|----------|---------|

| | |
|---------|--|
| Kitchen | Shared with 13 (mixed gender) students |
|---------|--|

| | |
|----------------|---------------------------------|
| Washing/Drying | In common area (free of charge) |
|----------------|---------------------------------|

| | |
|---------|------------------|
| Parking | Additional costs |
|---------|------------------|

DE BOELELAAN/ GRONINGEN- STRAAT

Rental Price:

€469,47 - €598,93 per month*

Housing
Allowance

Not eligible

Bedroom

Private
(13,4 m² – 21,2 m²)

Bathroom

Shared with 5 or 7
(mixed gender) students

Kitchen

Shared with 5 or 7
(mixed gender) students

Washing/Drying

In common kitchen
(free of charge)

Parking

Additional costs



[View on Google Maps](#)



CORNELIS LELYLAAN

Average Rental Price:
*€ 585,09 per month**

| | |
|-------------------|--|
| Housing Allowance | Eligible, if you are ≥ 18 |
| Bedroom | Private (22 m ² – 26 m ²) |
| Bathroom | Private |
| Kitchen | Private |
| Washing/Drying | In common area (paid) |
| Parking | Additional costs |

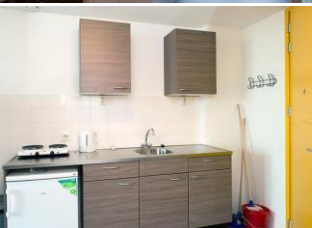


[Click for video tour!](#)



[View on Google Maps](#)





KRELIS LOUWEN STRAAT

Average Rental Price:

€ 593,25 - €598,85 per month*

Housing
Allowance

Eligible, if you are ≥ 18

Bedroom

Private (21 m² – 22,4 m²)

Bathroom

Private

Kitchen

Private

Washing/Drying

In the building
(coin operated)

Parking

Additional costs



[Click for video tour!](#)



[View on Google Maps](#)

PIERRE LALLEMENT STRAAT

Rental Price:

€600,27 per month*

Housing
Allowance

Eligible, if you are ≥ 18

Bedroom

Private (25,3 m² – 29,2 m²)

Bathroom

Private

Kitchen

Private

Washing/Drying

In common area (paid)

Parking

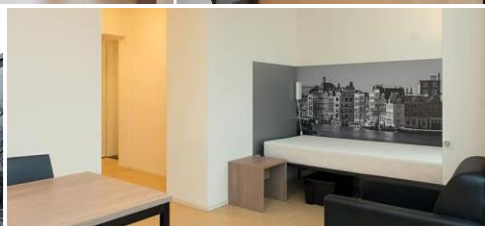
Additional costs



[Click for video tour!](#)



[View on Google Maps](#)





ROCKFIELD - STUNEST

Student Spartaan is located in the West of Amsterdam, only 10 minutes away from the city center. The building is surrounded by sports fields, water sports and a gym. Furthermore, the building includes a roof garden, secure bike lock-up facilities and a lounge with study facility. Find out more on their [website](#).

*Rental Price: € 837 per month**

Administration fee €240

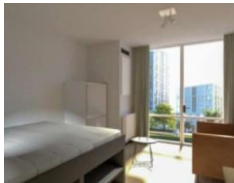
| | |
|-------------------|--------------------------------|
| Deposit | €1500 |
| Housing Allowance | Eligible, if you are ≥ 23 |
| Bedroom | Private (27,5 m2) |
| Bathroom | Private |
| Kitchen | Private |
| Washing/Drying | In common area (paid) |
| Parking | Additional costs |
| Internet | Included in rental price |



[Click for video tour!](#)



[View on Google Maps](#)



OURCAMPUS AMSTERDAM DIEMEN

Modern self-contained apartments just 14 away minutes from the city center of Amsterdam. The extended facilities and services include a garden with hammocks, a gym, study areas and various dining places on campus. For more information, check out their [website](#)

INCLUDED

Service desk; handyman; 24/7 security & electronic key access; secured bike parking; flexible work/study spaces; lounge including big screen TV & games; (vegetable) gardens; sports facilities (gym membership, tennis/basketball/soccer court/climbing wall)

NOT INCLUDED

Kitchen & bedlinen package. Note that you need to bring your own kitchen items and bedlinen.

*Average Rental Price: € 1006,71
- € 1198,50 per month**

Administration fee €100

| | |
|-------------------|---|
| Deposit | €1500 |
| Housing Allowance | Eligible, if you are ≥ 23 Limited rooms with housing allowance |
| Bedroom | Private (21,5 - 22,6 m2) |
| Bathroom | Private |
| Kitchen | Private |
| Washing/Drying | In common area (paid) |
| Parking | Additional costs |
| Internet | 100 MB internet, included in the rental price |



[Click for virtual tour!](#)



[View on Google Maps](#)



OURDOMAIN AMSTERDAM DIEMEN

OurDomain residential complexes are close to the city center with convenient public transportation links and a diverse range of facilities that enrich and simplify our residents' fast-paced, urban lifestyle. Facilities include work and study spaces, gyms, bars, restaurants, a launderette, a supermarket, parking, 24-hour security and a service desk. For more information, check out their [website](#).

Average Rental Price:

€1059,48 - €1182,42 per month*

| | |
|--------------------|--|
| Administration fee | €100 |
| Deposit | €1500 |
| Housing Allowance | Not eligible |
| Bedroom | Private (22,6 m2) |
| Bathroom | Private |
| Kitchen | Private |
| Washing/Drying | In common area paid |
| Parking | Additional costs |
| Internet | Super high speed 1 gig wired internet 300mb Wi-Fi |

INCLUDED

Service desk; handyman; 24/7 security & electronic key access; secured bike parking; flexible work/study spaces; Lounge including big screen TV & games; (vegetable) gardens; sports facilities (gym membership, tennis/basketball/soccer court/climbing wall)

NOT INCLUDED

Kitchen & bedlinen package. Note that you need to bring your own kitchen items and bedlinen.



[View on Google Maps](#)

MOSAIC WORLD – DE FLIER

This is a newly built building (opened in July 2023).
The rental properties at De Flier are fully equipped.
For example, every studio and apartment will have a brand new kitchen and bathroom.



Rental Price:

€1011,50 - €1038,50 per month*

(Excl. maintenance subscription 11,15 EUR p/m)

| | |
|---------|-------|
| Deposit | €1250 |
|---------|-------|

| | |
|--------------------|-----|
| Administration fee | €15 |
|--------------------|-----|

| | |
|-------------------|---------------------------|
| Housing Allowance | Eligible, if you are ≥ 23 |
|-------------------|---------------------------|

| | |
|---------|----------------------|
| Bedroom | Private (17 – 28 m2) |
|---------|----------------------|

| | |
|----------|---------|
| Bathroom | Private |
|----------|---------|

| | |
|---------|---------|
| Kitchen | Private |
|---------|---------|

| | |
|----------------|------------|
| Washing/Drying | Laundromat |
|----------------|------------|

| | |
|---------|------------------|
| Parking | Additional costs |
|---------|------------------|

[View on Google Maps](#)

MOSAIC WORLD – WASA

The studios comprise a living unit of three by six meters, including kitchen and bathroom with toilet, and are fully furnished and upholstered. Facilities such as Wi-Fi, maintenance and repair services by Camelot are available with additional costs. The complex also offers communal areas where you can meet roommates. Note: You can only live at WASA student village in case you are between 18-27 years old.

Average Rental Price:

€ 788,15 per month*

(Excl. maintenance subscription 8,95 EUR p/m)

Deposit €1250

Administration fee €15

Housing Allowance Eligible, if you are ≥ 23

Bedroom Private (17 m²)

Bathroom Private

Kitchen Private


Washing/Drying Laundromat

Parking Additional costs



[View on Google Maps](#)

DE KEY- BOLD

 [View on Google Maps](#)

In the high-rise strip of Overhoeks, directly behind the A'dam Toren and the EYE Film Museum in Amsterdam-North, Woonstichting De Key rents out studios to international students. The residences are located on the lower seven floors of the new BOLD building. The gas-free BOLD is the most sustainable residential building from De Key. The building is however newly built and there is still ongoing construction around the area.

Note: BOLD has restrictions in regards to hot water usage (30 min. per day) due to sustainable living.

Rental Price:
€ 723,22 per month*

Administration fee €150

Deposit 2 months' rent

Housing Allowance Eligible, if you are ≥ 18

Bedroom Private (-/+ 20 m²)

Bathroom Private

Kitchen Private

Washing/Drying In common area

Parking Additional costs





STUDENT EXPERIENCE - MINERVAHAVEN

Their residences offer a range of high-quality studios with all-in access to a wide variety of facilities and services like an in-house gym, laundromat and rooftop sports field. Kitchen, bathroom & bedlinen package are included. Bikes can be borrowed free of charge. For more information, check out their [website](#).

*Rental Price: €1075 - 1155 per month**

Administration fee €50

Deposit €1500

Housing Allowance Not eligible

Bedroom Private (21 m2)

Bathroom Private

Kitchen Private

Washing/Drying Laundromat, Additional costs

Parking Additional costs

Internet Included in the rental price



[Click for virtual tour!](#)



[View on Google Maps](#)