

**SHORT-STAY FURNISHED
STUDENT ACCOMMODATION TYPES**
Vrije Universiteit Amsterdam



**VRIJE
UNIVERSITEIT
AMSTERDAM**

Student Accommodation Guide

Table of Contents

General Information	3
Housing Corporations	3
Budget	3
Housing allowance	3
Condition of the building	4
Facilities	4
Social vs. private	4
Locations	5
Couple rooms	7
How to apply	7
Housing Corporations and room types	8
DUWO short stay	8
Uilenstede 2 - 96	9
Uilenstede 102 - Shared	10
Uilenstede 102 - Private	11
Uilenstede 168 - 224	12
De Boelelaan/	13
Groningenstraat	13
Cornelis Lelylaan	14
Krelis Louwenstraat	15
Pierre Lallementstraat	16
Rockfield Stunest Spartaan	17
OurCampus Amsterdam Diemen	18
OurDomain Amsterdam Diemen	19
Plaza Resident Services – de Flier	20
Plaza Resident Services – WASA	21
LievenDe Key - BOLD	22
Student Experience - Minervahaven	23

General Information

This guide outlines the various types of student accommodation available. All rooms come fully furnished. We'll assist you in selecting the perfect option by presenting characteristics to consider, including facilities and locations. Additionally, detailed information on each room type, such as rental prices, pictures, and dimensions, will be provided. Please note that all rooms are available for a maximum academic year stay; extensions are not possible.

Housing Corporations

VU Amsterdam works with several housing corporations. These housing corporations offer various room types at several locations in Amsterdam.

Housing Corporation	Location / Building name	Av. Price*	One-time fee	Housing allowance
DUWO Short stay	Uilenstede 2-96	€445	€225	Possible ≥ 18
	Uilenstede 102 – shared	€483	€225	Not possible
	Uilenstede 102 – private	€675	€250	Possible ≥ 18
	Uilenstede 168 - 224	€540	€225	Possible ≥ 18
	Cornelis Lelylaan	€620	€250	Possible ≥ 23
	Krelis Louwenstraat	€630	€250	Possible ≥ 23
	Pierre Lallementstraat	€744	€250	Possible ≥ 23
	De Boelelaan	€622	€225	Not possible
OurDomain	Dalsteindreef / Amsterdam Diemen	€1137	€100	Not possible
OurCampus	Dalsteindreef / Amsterdam Diemen	€1000 - €1200	€100	Limited Possible ≥ 23**
Lieven de Key	Bercyiaan / BOLD	€704	€150	Possible ≥ 18
Plaza Resident Services	Flierbosdreef / De Flier	€1102	€15	Possible ≥ 23
	Naritaweg/ WASA Student Village	€887	€15	Possible ≥ 23
Rockfield StuNest	Jan van Galenstraat / Spartaan	€883	€240	Possible ≥ 23
Student Experience	Moermanskade / Minervahaven	€1175	€50	Not possible

*Rent prices in the document are subject to change, new rental prices will be determined in May 2025. The rent increase follows the inflation standard and will be around 5% plus possible VAT increase. The current service costs are included in the average price. Please note the prices in this document are subject to change.

**OurCampus offers limited accommodation options that qualify for housing allowance, while other accommodations are not eligible for such benefits.

Budget

The price of accommodation varies between €450 and €1350 per month. Utilities (water/ electricity/ internet) are included in the price. Choosing one of the cheaper options normally means you will have a room with shared facilities (kitchen and/or bathroom).

Housing allowance

Housing allowance (huurtoeslag) is a subsidy provided by the Dutch government to tenants with a low income and a relatively high cost of rent. Some of the student rooms we provide qualify for housing allowance. Find out more about which housing types are eligible on the following pages. For more general information about housing allowance and whether you are eligible for this subsidy, please visit this [link](#).

Condition of the building

If you prefer a modern, clean and relatively new building, we advise you to choose accommodation at other locations than Uilenstede. For the buildings at Uilenstede it is important to note that most of them were built in the 1970s, although some of them have been renovated in recent years. In general, this location is suitable for students who are looking for budget accommodation. We do also have more recently built accommodation types, like De Flier and Student Experience. Accommodation types at other locations are generally in good condition.

Facilities

As a student in the Netherlands, it is very common to have your own bedroom while sharing your facilities (kitchen and/or bathroom). We have a wide range of options available in terms of shared/private facilities. Below you can find a quick overview:



Housing corp.	Room type	Bedroom	Bathroom	Kitchen
DUWO	Uilenstede 2-96	Private	Shared with 14 other students	Shared with 14 other students
	Uilenstede 102	Private	Shared with 1 student or private	Shared with 1 other student or private
	Uilenstede 168 - 224	Private	Private	Shared with 14 other students
	De Boelelaan	Private	Shared with 4 or 6 other students	Shared with 4 or 6 other students
	Krelis Louwenstraat	Private	Private	Private
	Cornelis Lelylaan	Private	Private	Private
	Pierre Lallementstraat	Private	Private	Private
OurDomain	Amsterdam Diemen	Private	Private	Private
OurCampus	Amsterdam Diemen	Private	Private	Private
Lieven de Key	BOLD	Private	Private	Private
Plaza Resident Services	De Flier	Private	Private	Private
	Wasa	Private	Private	Private
Rockfield Stunest	Spartaan	Private	Private	Private
Student Experience	Minervahaven	Private	Private	Private

Social vs. private

If your plan is to meet many students, have dinners and/or drinks together, we advise you to choose a room with shared facilities (kitchen and/or bathroom). If you rather prefer a more private environment, we suggest you book a private studio. If you prefer both, our advice would be to book a studio at Uilenstede, which is our largest housing campus where you can find a lively student community and many student facilities. Generally, there is less social interaction between students at other locations.

Locations

We offer student accommodation at various locations across Amsterdam. While the allure of living in the city center with its charming canals and historic buildings may be appealing, it's worth considering that it primarily caters to rich Dutch residents and tourists.

In contrast, Uilenstede is situated amidst lush greenery, nestled between two parks and close to the Amsterdam Forest (Amsterdamse Bos). Krelis Louwenstraat, Cornelis Lelylaan, Wasa, and StuNest are situated in the western part of the city. Pierre Lallementstraat, on the other hand, lies in the multicultural eastern area of Amsterdam.

Unlike the vibrant student community at Uilenstede, De Boelelaan/Groningenstraat offers accommodation in a residential neighborhood, making it less suitable for parties. On the other hand, it is conveniently located near the VU Amsterdam university campus. Similarly, De Flier has a less pronounced student housing atmosphere and leans more towards social housing. OurCampus/OurDomain Amsterdam is situated in the town of Diemen neighboring the southeast, while BOLD is located across the river IJ in the up-and-coming North area.

Student Experience provides an innovative full-service concept, offering sustainable housing for students from diverse backgrounds. Plaza Resident Services offers two distinct locations: the WASA student village and the newly constructed De Flier building, opened in July 2023.



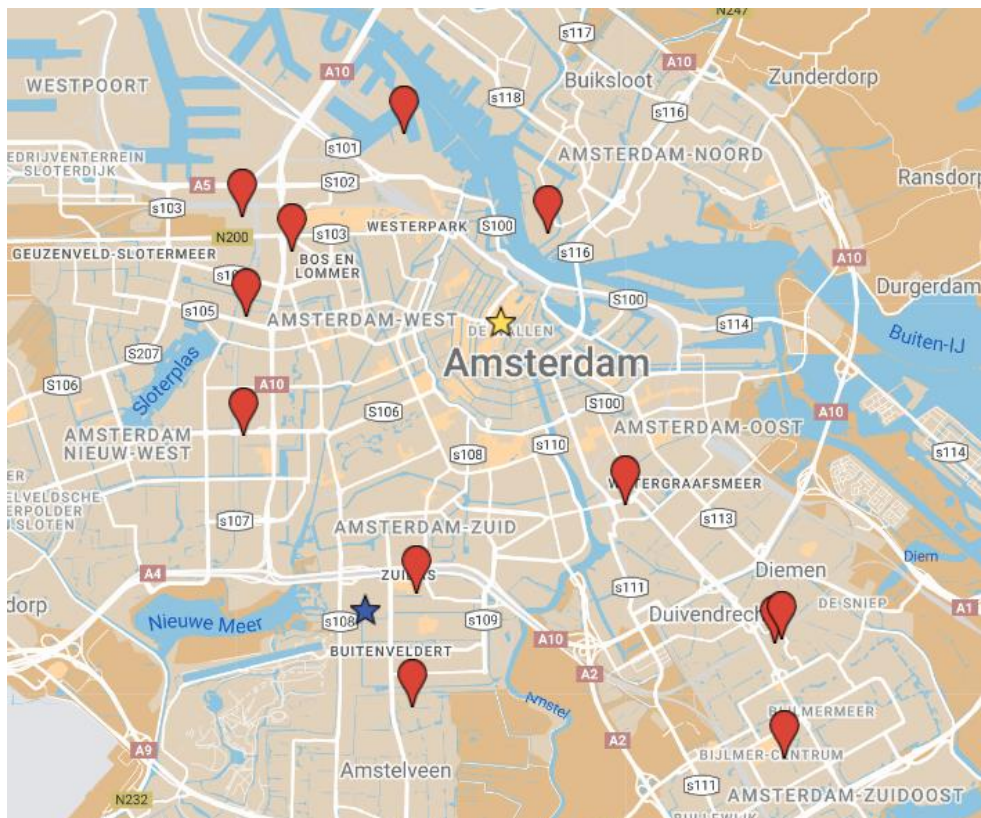
Distance to VU	Walk	Bike	Public transportation
Uilenstede	20 min	7 min	10 min
De Boelelaan	10 min	4 min	-
Pierre Lallementstraat	60 min	20 min	20 min
Cornelis Lelylaan	55 min	15 min	25 min
Rockfield StuNest Spartaan	55 min	20 min	25 min
Krelis Louwenstraat	80 min	30 min	35 min
OurCampus Amsterdam Diemen	90 min	25 min	23 min
OurDomain Amsterdam Diemen	90 min	25 min	23 min
Plaza Resident Services - de Flier	90 min	30 min	30 min
Plaza Resident Services - WASA	90 min	30 min	25 min
Lieven De Key - BOLD	90 min	30 min	30 min
Student Experience Minervahaven	110 min	35 min	40 min



Distance to City Center	Walk	Bike	Public transportation
Uilenstede	100 min	30 min	35 min
De Boelelaan	65 min	25 min	30 min
Pierre Lallementstraat	40 min	10 min	20 min
Cornelis Lelylaan	80 min	20 min	15 min
Rockfield StuNest Spartaan	70 min	20 min	25 min
Krelis Louwenstraat	60 min	20 min	30 min
OurCampus Amsterdam Diemen	90 min	25 min	20 min
OurDomain Amsterdam Diemen	90 min	25 min	20 min
Plaza Resident Services - de Flier	110 min	30 min	25 min
Plaza Resident Services - WASA	90 min	25 min	15 min
Lieven de Key - BOLD	20 min	10 min	20 min
Student Experience Minervahaven	65 min	20 min	30 min

On the map below, you will find an overview of where the buildings are located in Amsterdam. You can follow this [link](#) to get an overview of all the different locations.

Map of Amsterdam



Couple rooms

We have very limited rooms available for couples. For more information about couple rooms and how to apply please have a look at the couple rooms brochure or email studentaccommodation@vu.nl for more information.

How to apply

In your personal dashboard on vu.nl, you can register for housing and complete your application by selecting your preferred budget category and paying the housing fee. Please note that the budget you choose has no effect on your actual booking in any way. When booking your room, you can also choose outside of your indicated budget.

Keep in mind that housing is in high demand and that the number of rooms available is limited. The International Office will do its utmost best to find suitable accommodation for everyone, but **housing is not guaranteed for every student** (max 50% of incoming students). We can also not guarantee housing at any specific location or within a specific budget category. We work with a **first paid, first-served system**, so the sooner you pay the housing fee, the more chances you will have in securing your preferred accommodation.

On the next pages, you can find an overview of the different types of accommodation with pictures, rental prices and sometimes a link to a video. Based on the criteria above, your priorities and the information on the following pages, you should be able to decide which room will meet your needs. In case you would like assistance with this, please send us an e-mail at studentaccommodation@vu.nl or schedule a phone call in our [online tool](#).

Housing Corporations and room types

DUWO short stay



For many years, the DUWO Foundation has been the provider of student rooms in Amsterdam and various other cities in the Netherlands. With nearly 32,000 student rooms, DUWO is the largest student accommodation specialist in the Netherlands. The following pages that have a DUWO logo in the lower right corner will provide information about the various room types reserved at DUWO.

Rental period

These room types have a fixed rental period of one full academic year (mid-Aug to mid- Aug). Contracts cannot be shortened or extended.

Administrative fee & first installment

Please note that for every room type you have to make a one-time administrative fee payment (which is non-refundable), this payment varies per housing provider and the exact costs can be viewed on page 1. This payment includes contract costs, cleaning service, bed linen and kitchen packages. Moreover, the first instalment for all accommodation types at DUWO consists of 3 months of rent (the first and last two months of your contract).

Standard inventory

At least the below-mentioned items should be present in your room. The model of an item may differ from room to room.

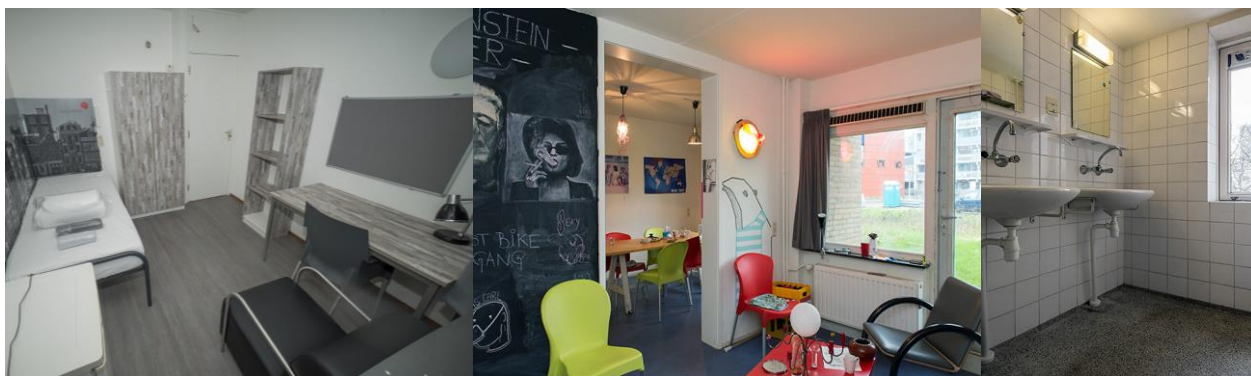
Room	Bed	Toilet/bathroom	Kitchen
Waste basket	Standard single bed + mattress (90x200cm)	Toilet brush	Hot plate
Wardrobe	pillow		Garbage bin
Bookcase	pillowcase		Refrigerator
Simple chair	duvet		
Desk lamp	duvet cover with tuck-in strip		
Small table	fitted sheet		
Desk and office chair	molton		
Window coverings			
Wi-Fi connection			

Uilenstede 2 - 96

€ 445 per month*

€ 225 one-time fee

Campus Uilenstede, on the outskirts of Amsterdam in Amstelveen, houses 3400 student accommodations, offering shared rooms and independent apartments. Amenities include a café, supermarket, sports center, theater, and more. Nearby is the Amsterdamse Bos, perfect for nature lovers and hosting various events. The Vrije Universiteit is a short bike ride or metro/tram journey away, and downtown Amsterdam is accessible within twenty minutes by metro, tram, or bike.



Room Features

- Housing allowance ≥ 18 years
- Private bedroom (11m²)
- Shared kitchen/bathroom (14 people - mixed gender)
- Washing and drying on site (coin based)
- Parking for additional costs



[Click here for a video tour!](#)



[View on Google Maps](#)

102

Uilenstede 102 - Shared

€ 483 per month*

€ 225 one-time fee

Campus Uilenstede, on the outskirts of Amsterdam in Amstelveen, houses 3400 student accommodations, offering shared rooms and independent apartments. Amenities include a café, supermarket, sports center, theater, and more. Nearby is the Amsterdamse Bos, perfect for nature lovers and hosting various events. The Vrije Universiteit is a short bike ride or metro/tram journey away, and downtown Amsterdam is accessible within twenty minutes by metro, tram, or bike.



Room Features

- No housing allowance
- Private bedroom (18m²)
- Shared bathroom (2 people – same gender)
- Shared kitchen (2 people – same gender)
- Washing and drying on site (coin based)
- Free parking on site



[Click here for a video tour!](#)



[View on Google Maps](#)

102

Uilenstede 102 - Private

€ 675 per month*

€ 250 one-time fee

Campus Uilenstede, on the outskirts of Amsterdam in Amstelveen, houses 3400 student accommodations, offering shared rooms and independent apartments. Amenities include a café, supermarket, sports center, theater, and more. Nearby is the Amsterdamse Bos, perfect for nature lovers and hosting various events. The Vrije Universiteit is a short bike ride or metro/tram journey away, and downtown Amsterdam is accessible within twenty minutes by metro, tram, or bike.



Room Features

- Housing allowance ≥ 18 years
- Private bedroom/kitchen/bathroom (23m² – 25m²)
- Washing and drying on site (coin based)
- Free parking on site



[Click here for a video tour!](#)



[View on Google Maps](#)

Uilenstede 168 - 224

€ 540 per month*

€ 225 one-time fee

Campus Uilenstede, on the outskirts of Amsterdam in Amstelveen, houses 3400 student accommodations, offering shared rooms and independent apartments. Amenities include a café, supermarket, sports center, theater, and more. Nearby is the Amsterdamse Bos, perfect for nature lovers and hosting various events. The Vrije Universiteit is a short bike ride or metro/tram journey away, and downtown Amsterdam is accessible within twenty minutes by metro, tram, or bike.



Room Features

- Housing allowance ≥ 18 years
- Private bed- and bathroom (22m²)
- Shared kitchen (13 people – mixed gender)
- Free common washing and drying
- Parking for additional costs



[Click here for a video tour!](#)



[View on Google Maps](#)

De Boelelaan/ Groningenstraat

€ 622 per month*

€ 225 one-time fee

On De Boelelaan and Groningenstraat, DUWO offers 120 shared accommodations, of which half are reserved for international students from VU. Laundry facilities are shared, and there's a bike storage. It's a prime location for VU students, just minutes away from the university and Gelderlandplein shopping center. You can reach Amsterdam city center in 20 minutes and Vondelpark in 15 minutes, known for its summer theater performances and concerts. Nearby attractions include Vondel CS film museum and the Blauwe Theehuis. Even closer is the Amsterdamse Bos, three times larger than Central Park, renowned for its rowing competitions and various events.



Room Features

- No housing allowance
- Shared bathroom/kitchen (5-7 people – mixed gender)
- Private bedroom (14-18m²)
- Free common washing and drying
- Parking for additional costs



[Click here for a video tour!](#)



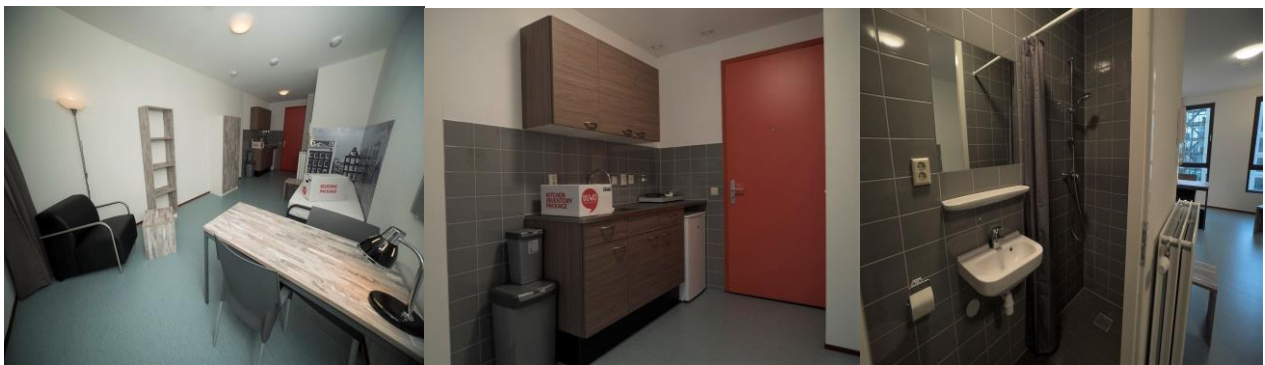
[View on Google Maps](#)

Cornelis Lelylaan

€ 620 per month*

€ 250 one-time fee

In the building Little Manhattan in Amsterdam West, DUWO rents out almost 600 independent studios, half of which are to international students. The building is brand new, and from the higher floors, you have a stunning view over the city. Of course, you can store your bike in the bike storage and do your laundry in the laundry room. With Lelylaan station around the corner, you live in an ideal location on Cornelis Lelylaan and Willem Frogerstraat. When you step out the door, you only need to take a few steps to catch the train, metro, bus, or tram. For your daily groceries, you can cycle a few minutes to the shopping center at Delflandplein. The Rembrandtplein is also just around the corner!



Room Features

- Housing allowance ≥ 18 years
- Private bedroom/kitchen/bathroom (22-26m²)
- Washing and drying on site (coin based)
- Parking for additional costs



[Click here for a video tour!](#)



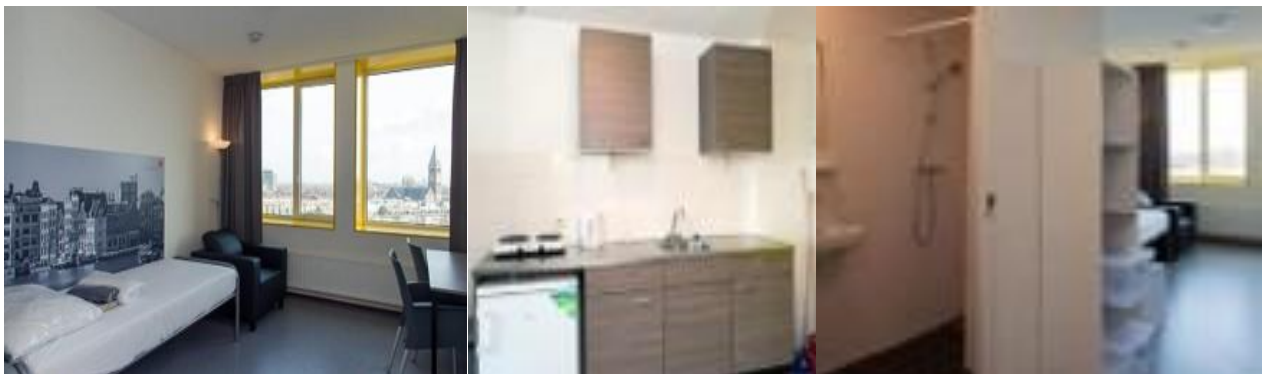
[View on Google Maps](#)

Krelis Louwenstraat

€ 630 per month*

€ 250 one-time fee

In Amsterdam West, on Krelis Louwenstraat, stands the Elseviergebouw. This eleven-story building was completely renovated in 2015. It comprises over 200 independent apartments, a bike storage, and a laundry room. Conveniently, there's a supermarket right next to the building. Bos en Lommerplein and Bos en Lommerweg are close by, providing various shops and eateries, with tram 12 reaching the city center in 10 minutes. Westerpark, with its restaurants, cafes, clubs, and cinema, is just a 5-minute bike ride away.



Room Features

- Housing allowance ≥ 18 years
- Private bedroom/kitchen/bathroom (22m²)
- Washing and drying on site (coin based)
- Parking for additional costs



[Click here for a video tour!](#)



[View on Google Maps](#)

Pierre Lallementstraat

€ 745 per month*

€ 250 one-time fee

On Pierre Lallementstraat and James Wattstraat in Amsterdam East stands student residence De Feniks. DUWO rents out independent apartments here with private kitchen and bathroom. There's a laundry room and bike storage available in the building. De Feniks is just a few minutes' walk from Amstelstation, where you can catch the train, metro and tram. Within minutes of cycling, you'll reach Middenweg, a lively shopping street in Watergraafsmeer with charming restaurants. You're also close to Wibautstraat with trendy cafes and clubs, and you can reach the city center in ten minutes by bike.



Room Features

- Housing allowance ≥ 18 years
- Private bedroom/kitchen/bathroom (26m²)
- Washing and drying on site (coin based)
- Parking for additional costs



[Click here for a video tour!](#)



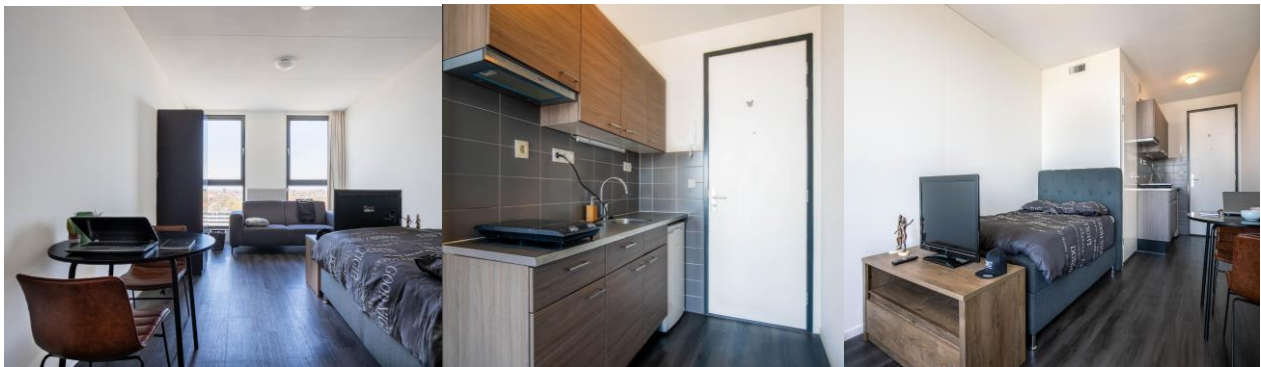
[View on Google Maps](#)

Rockfield Stunest Spartaan

€ 883 per month*

€ 240 one-time fee

Student Spartaan is located in the West of Amsterdam, only 10 minutes away from the city center. The building is surrounded by sports fields, water sports and a gym. Furthermore, the building includes a roof garden, secure bike lock-up facilities and a lounge with study facility. Find out more on their [website](#).



Room Features

- Housing allowance ≥ 23 years
- Private bedroom/kitchen/bathroom (28m²)
- Washing and drying on site (coin based)
- Parking for additional costs



Click here for a video tour!



View on Google Maps

OurCampus Amsterdam Diemen

€ 1080 – 1165 per month*

€ 100 one-time fee

At a convenient location, only 14 minutes by public transport to the city center of Amsterdam, and 20 minutes by train to the VU, OurCampus Amsterdam Diemen allocates over 1.000 students in modern self-contained studios, with great facilities such as lounges, study rooms, laundry and more. The security deposit for this studio is €1,500.



Room Features

- Housing allowance ≥ 23 years**
- Private bedroom/kitchen/bathroom (27m²)
- Washing and drying on site (coin based)
- Parking for additional costs



[Click here for a video tour!](#)



[View on Google Maps](#)

OurDomain Amsterdam Diemen

€ 1137 per month*

€ 100 one-time fee

At a convenient location, only 14 minutes by public transport to the city center of Amsterdam, and 20 minutes by train to the VU, OurCampus Amsterdam Diemen allocates over 1.000 students in modern self-contained studios, with great facilities such as lounges, study rooms, laundry and more. The security deposit for this studio is €1,500.



Room Features

- No housing allowance
- Private bedroom/kitchen/bathroom (22m²)
- Washing and drying on site (coin based)
- Parking for additional costs



[Click here for a video tour!](#)



[View on Google Maps](#)

Plaza Resident Services – de Flier

€ 1102 per month*

€ 15 one-time fee

Nestled in Amsterdam's multicultural district Zuidoost, De Flier offers a taste of diverse cultures at the Shopperhal and Amsterdamse Poort's charming shops. With quick access to the university and city center within 30 minutes, the newly built (opened July 2023) rental properties feature fully equipped studios and apartments, each with brand-new kitchens and bathrooms for modern comfort.



Room Features

- Housing allowance ≥ 23 years
- Private bedroom/kitchen/bathroom (20m²)
- Washing and drying on site (coin based)
- Parking for additional costs



[Click here for a video tour!](#)



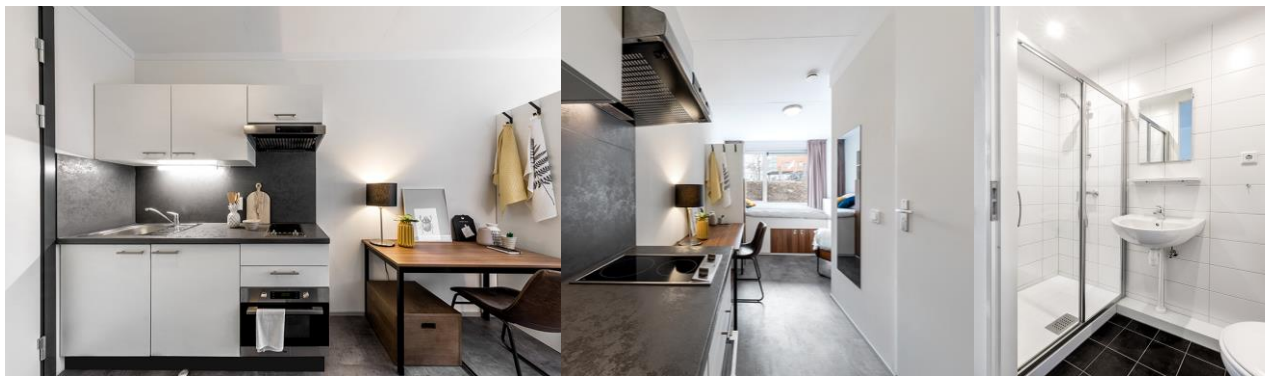
[View on Google Maps](#)

Plaza Resident Services – WASA

€ 887 average per month*

€ 15 one-time fee

The studios comprise a living unit of three by six meters, including kitchen and bathroom with toilet, and are fully furnished and upholstered. Facilities such as Wi-Fi, maintenance and repair services by Camelot are available with additional costs. The complex also offers communal areas where you can meet roommates. Note: You can only live at WASA student village in case you are between 18-27 years old.



Room Features

- Housing allowance ≥ 23 years
- Private bedroom/kitchen/bathroom (16m²)
- Washing and drying on site (coin based)
- Parking for additional costs



[Click here for a video tour!](#)



[View on Google Maps](#)

Lieven De Key - BOLD

€ 704 average per month*

€ 150 one-time fee

On the north side of the River IJ, a new district called BOLD is emerging. BOLD offers fully furnished studios with modern amenities like compact kitchens and private bathrooms. Residents can utilize communal laundry facilities and bike storage. A nearby ferry provides convenient access to the city center day and night. Initial payment includes a €150 administrative fee and a 2-month rent deposit.



Room Features

- Housing allowance ≥ 18 years
- Private bedroom/kitchen/bathroom (20m²)
- Common area (additional costs)
- Parking for additional costs



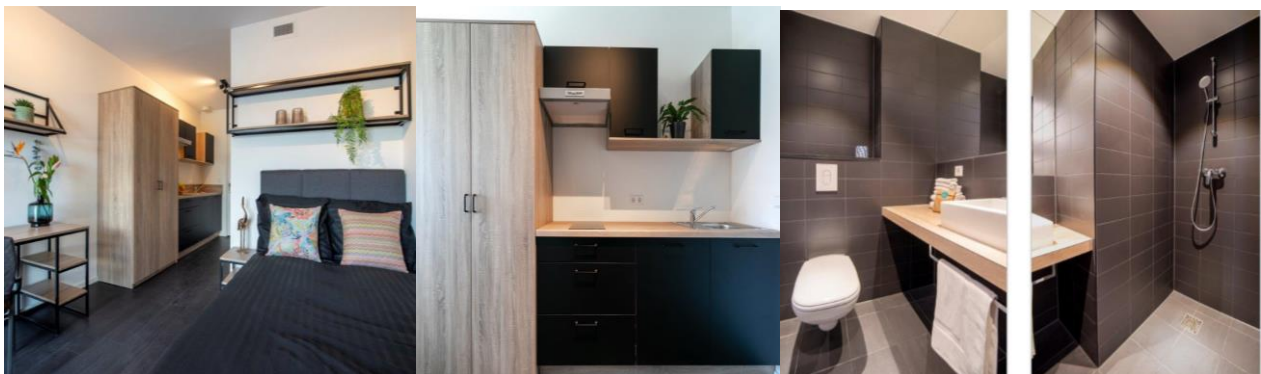
[View on Google Maps](#)

Student Experience - Minervahaven

€ 1175 per month*

€ 50 one-time fee

Studios at 'Amsterdam Minervahaven' are complete with private bathrooms, kitchens, and premium furnishings including a boxspring bed, desk, sofa, and flatscreen TV. Additionally, convenient packages for kitchen, bathroom, and linen are available. Access to all facilities such as lounges, study rooms, dining areas, games corners, gym, and rooftops is included for socializing, studying, or relaxing.



Room Features

- No housing allowance
- Private bedroom/kitchen/bathroom (22m²)
- Laundromat (additional costs)
- Parking for additional costs



[Click here for a video tour!](#)



[View on Google Maps](#)