

# COUPLE ROOMS

## STUDENT ACCOMMODATION TYPES

Vrije Universiteit Amsterdam



VRIJ  
UNIVERSITEIT  
AMSTERDAM



## Table of Contents

General Information.....	3
<b>Housing Corporations</b> .....	3
<b>Housing allowance</b> .....	3
<b>Locations</b> .....	3
<b>How to apply</b> .....	5
Housing Corporations and room types .....	6
<b>DUWO short stay</b> .....	6
<b>Uilenstede 172</b> .....	7
<b>Cornelis Lelylaan</b> .....	8
<b>Pierre Lallementstraat</b> .....	9
<b>OurCampus Amsterdam Diemen</b> .....	10
<b>Lieven De Key - BOLD</b> .....	11

# General Information

This guide outlines the various types of student accommodation available for couples. All rooms come fully furnished. We'll assist you in selecting the perfect option by presenting characteristics to consider, including facilities and locations. Additionally, detailed information on each room type, such as rental prices, pictures, and dimensions, will be provided. Please note that all rooms are available for a maximum academic year stay; extensions are not possible.

## Housing Corporations

There are very limited couple rooms available. Most of the couples' rooms are part of DUWO Accommodate and are located at Cornelis Lelylaan, Pierre Lallementstraat and Uilenstede. We also have couples' rooms at OurCampus Amsterdam Diemen and BOLD (De Key).

Housing Corporation	Location / Building name	Av. Price*	One-time fee	Housing allowance
DUWO Short stay	Uilenstede 172	€948,80	€250	Possible ≥ 23
	Cornelis Lelylaan	€891,92	€250	Possible ≥ 23
	Pierre Lallementstraat	€1035,08	€250	Possible ≥ 23
	Eerste Ringdijkstraat	€952,42	€250	Possible ≥ 23
OurCampus	Dalsteindreef / Amsterdam Diemen	€1253	€150	Not Possible
Lieven de Key	Bercyiaan / BOLD	€704	€231	Possible ≥ 18

\*Rent prices in the document are subject to change, new rental prices will be determined in May 2025. The rent increase follows the inflation standard and will be around 5% plus possible VAT increase. The current service costs are included in the average price. Please note the prices in this document are subject to change.

## Housing allowance

Housing allowance (huurtoeslag) is a subsidy provided by the Dutch government to tenants with a low income and a relatively high cost of rent. Some of the student rooms we provide qualify for housing allowance. Find out more about which housing types are eligible on the following pages. For more general information about housing allowance and whether you are eligible for this subsidy, please visit this [link](#).

## Locations









We offer student accommodation at various locations across Amsterdam. While the allure of living in the city center with its charming canals and historic buildings may be appealing, it's worth considering that it primarily caters to rich Dutch residents and tourists.

In contrast, Uilenstede is a vibrant student community and is situated amidst lush greenery, nestled between two parks and close to the Amsterdam Forest (Amsterdamse Bos). It is conveniently located near the VU Amsterdam university campus.

Cornelis Lelylaan is situated in the western part of the city. Pierre Lallementstraat, on the other hand, lies in the multicultural eastern area of Amsterdam.

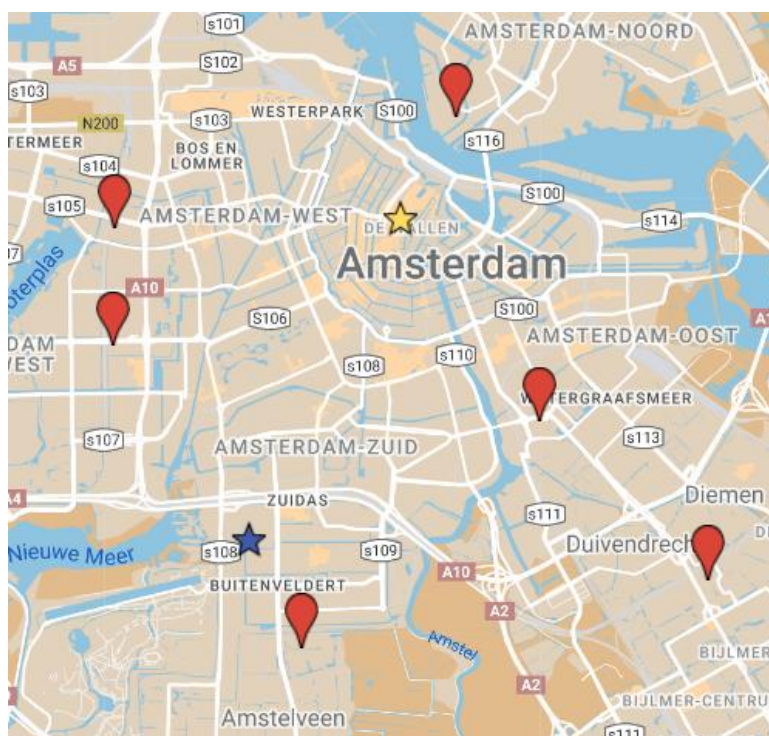
OurCampus Amsterdam is situated in the town of Diemen neighboring the southeast, while BOLD is located across the river IJ in the up-and-coming North area.

The following page's map will give you an overview of where these buildings are in Amsterdam. In terms of logistics, please view the tables below:

   				   			
Distance to VU	Walk	Bike	Public transportation	Distance to City Center	Walk	Bike	Public transportation
Uilenstede	20 min	7 min	10 min	Uilenstede	100 min	30 min	35 min
Pierre Lallementstraat	60 min	20 min	20 min	Pierre Lallementstraat	40 min	10 min	20 min
Cornelis Lelylaan	55 min	15 min	25 min	Cornelis Lelylaan	80 min	20 min	15 min
OurCampus Amsterdam Diemen	90 min	25 min	23 min	OurCampus Amsterdam Diemen	90 min	25 min	20 min
Lieven De Key - BOLD	90 min	30 min	30 min	Lieven de Key - BOLD	20 min	10 min	20 min
Eerste Ringdijkstraat	60 min	20 min	26 min	Eerste Ringdijkstraat	50 min	15 min	20 min

On the map below, you will find an overview of where the buildings are located in Amsterdam. You can follow this [link](#) to get an overview of all the different locations.

# Map of Amsterdam



## How to apply

In your personal dashboard on [vu.nl](http://vu.nl), you can register for housing and complete your application by selecting your preferred budget category and paying the housing fee. Please note that the budget you choose has no effect on your actual booking in any way. When booking your room, you can also choose outside of your indicated budget.

Keep in mind that housing is in high demand and that the number of rooms available is limited. Especially couple rooms are very low in availability. The International Office will do its utmost best to find suitable accommodation for everyone, but **housing is not guaranteed for every student** (max 50% of incoming students). We can also not guarantee housing at any specific location or within a specific budget category. We work with a **first paid, first-served system**, so the sooner you pay the housing fee, the more chances you will have in securing your preferred accommodation.

We can only offer couple rooms to newly incoming international students that are both enrolled at the Vrije Universiteit Amsterdam. After you have both paid the housing fee, please contact us both via e-mail, [studentaccommodation@vu.nl](mailto:studentaccommodation@vu.nl), to let us know that you prefer a couple room. Please make sure to mention your student number and the student number and name of the person you would like to get a couple room with.

On the next pages, you can find an overview of the different types of accommodation with pictures, rental prices and sometimes a link to a video. Based on the criteria above, your priorities and the information on the following pages, you should be able to decide which room will meet your needs. In case you would like assistance with this, please send us an e-mail at [studentaccommodation@vu.nl](mailto:studentaccommodation@vu.nl) or schedule a phone call in our [online tool](#).

# Housing Corporations and room types

## DUWO short stay



For many years, the DUWO Foundation has been the provider of student rooms in Amsterdam and various other cities in the Netherlands. With nearly 32,000 student rooms, DUWO is the largest student accommodation specialist in the Netherlands. The following pages that have a DUWO logo in the lower right corner will provide information about the various room types reserved at DUWO.

### Rental period

These room types have a fixed rental period of one full academic year (mid-Aug to mid- Aug). Contracts cannot be shortened or extended.

### Administrative fee & first installment

Please note that for every room type you have to make a one-time administrative fee payment (which is non-refundable), this payment varies per housing provider and the exact costs can be viewed on page 1. This payment includes contract costs, cleaning service, bed linen and kitchen packages. Moreover, the first instalment for all accommodation types at DUWO consists of 3 months of rent (the first and last two months of your contract).

### Standard inventory

At least the below-mentioned items should be present in your room. The model of an item may differ from room to room.

Room	Bed	Toilet/bathroom	Kitchen
Waste basket	2 Standard single bed + mattress (90x200cm)	Toilet brush	Hot plate
Wardrobe	pillows		Garbage bin
Bookcase	pillowcases		Refrigerator
Simple chair	duvets		
Desk lamp	duvet covers with tuck-in strip		
Small table	fitted sheets		
Desk and office chair	moltons		
Window coverings			
Wi-Fi connection			



# Uilenstede 172

€ 948,80 per month\*

€ 250 one-time fee

Campus Uilenstede, on the outskirts of Amsterdam in Amstelveen, houses 3400 student accommodations, offering shared rooms and independent apartments. Amenities include a café, supermarket, sports center, theater, and more. Nearby is the Amsterdamse Bos, perfect for nature lovers and hosting various events. The Vrije Universiteit is a short bike ride or metro/tram journey away, and downtown Amsterdam is accessible within twenty minutes by metro, tram, or bike.



## Room Features

- Housing allowance  $\geq 23$  years
- Private bedroom/kitchen/bathroom (41m<sup>2</sup>)
- Washing and drying on site (coin based)
- Parking for additional costs



[View on Google Maps](#)

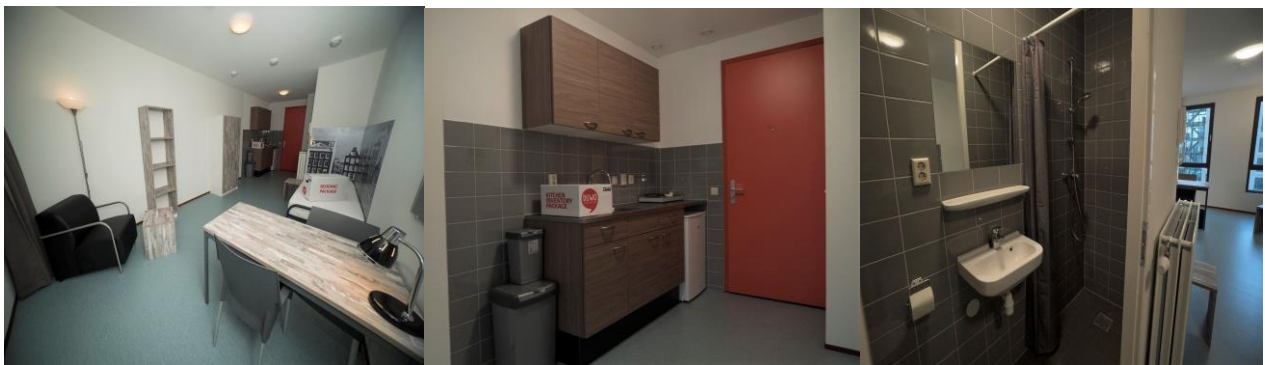


# Cornelis Lelylaan

€891,92 per month\*

€ 250 one-time fee

In the building Little Manhattan in Amsterdam West, DUWO rents out almost 600 independent studios, half of which are to international students. The building is brand new, and from the higher floors, you have a stunning view over the city. Of course, you can store your bike in the bike storage and do your laundry in the laundry room. With Lelylaan station around the corner, you live in an ideal location on Cornelis Lelylaan and Willem Frogerstraat. When you step out the door, you only need to take a few steps to catch the train, metro, bus, or tram. For your daily groceries, you can cycle a few minutes to the shopping center at Delflandplein. The Rembrandtplein is also just around the corner!



## Room Features

- Housing allowance  $\geq 23$  years
- Private bedroom/kitchen/bathroom (34-41m<sup>2</sup>)
- Washing and drying on site (coin based)
- Parking for additional costs



[View on Google Maps](#)



# Pierre Lallementstraat

€ 1035,08 per month\*

€ 250 one-time fee

On Pierre Lallementstraat and James Wattstraat in Amsterdam East stands student residence De Feniks. DUWO rents out independent apartments here with private kitchen and bathroom. There's a laundry room and bike storage available in the building. De Feniks is just a few minutes' walk from Amstelstation, where you can catch the train, metro and tram. Within minutes of cycling, you'll reach Middenweg, a lively shopping street in Watergraafsmeer with charming restaurants. You're also close to Wibautstraat with trendy cafes and clubs, and you can reach the city center in ten minutes by bike.



## Room Features

- Housing allowance  $\geq 18$  years
- Private bedroom/kitchen/bathroom (26-29m<sup>2</sup>)
- Washing and drying on site (coin based)
- Parking for additional costs



[View on Google Maps](#)



# OurCampus Amsterdam Diemen

€ 1253 per month\*

€ 150 one-time fee

At a convenient location, only 14 minutes by public transport to the city center of Amsterdam, and 20 minutes by train to the VU, OurCampus Amsterdam Diemen allocates over 1.000 students in modern self-contained studios, with great facilities such as lounges, study rooms, laundry and more. The security deposit for this studio is €1,500. The rooms contain a two persons bed in the size 140x200 cm.



## Room Features

- Housing allowance  $\geq 18$  years
- Private bedroom/kitchen/bathroom (27-29m<sup>2</sup>)
- Washing and drying on site (coin based)
- Parking for additional costs



[Click here for a video tour!](#)



[View on Google Maps](#)

# Lieven De Key - BOLD

€ 704 average per month\*

€ 150 one-time fee

On the north side of the River IJ, a new district called BOLD is emerging. BOLD offers fully furnished studios with modern amenities like compact kitchens and private bathrooms. Residents can utilize communal laundry facilities and bike storage. A nearby ferry provides convenient access to the city center day and night. Initial payment includes a €150 administrative fee and a 2-month rent deposit.



## Room Features

- Housing allowance  $\geq 18$  years
- Private bedroom/kitchen/bathroom (33m<sup>2</sup>)
- Common area (additional costs)
- Parking for additional costs



[View on Google Maps](#)