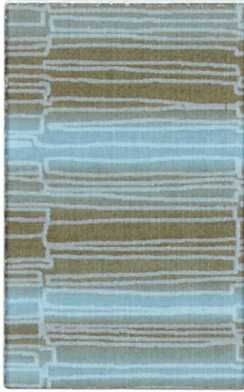


Stinson

IMPRESS

HIGH PERFORMANCE
UPHOLSTERY COLLECTION





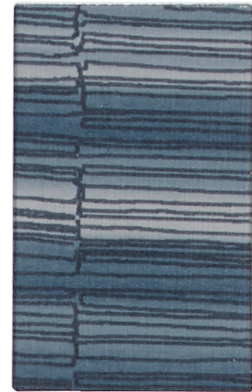
FREQUENCY
FRQ 23 Seashore



FREQUENCY
FRQ 25 Gingersnap



FREQUENCY
FRQ 20 Ionic



FREQUENCY
FRQ 29 Nautical



GALILEO
GAL 99 Smoky Quartz



GALILEO
GAL 94 Callisto



GALILEO
GAL 84 Proton



GALILEO
GAL 97 Midnight



GALILEO
GAL 95 Graphite



GALILEO
GAL 80 Pewter



GALILEO
GAL 98 Electron



IMPRESS WITH STA-KLEEN™
IPS 90 Onyx



IMPRESS WITH STA-KLEEN™
IPS 89 Carbonite



IMPRESS WITH STA-KLEEN™
IPS 87 Taupe



IMPRESS WITH STA-KLEEN™
IPS 83 Zest



IMPRESS WITH STA-KLEEN™
IPS 88 Truffle



IMPRESS WITH STA-KLEEN™
IPS 85 Navy



IMPRESS WITH STA-KLEEN™
IPS 82 Teal



NISHIKI
NIH 60 Obi



NISHIKI
NIH 53 Gyoza



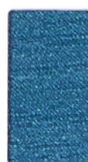
NISHIKI
NIH 55 Silver



NISHIKI
NIH 62 Lemongrass



NISHIKI
NIH 56 Celadon



NISHIKI
NIH 66 Peacock



NISHIKI
NIH 70 Shibori



NISHIKI
NIH 72 Zori



NISHIKI
NIH 52 Soba



NISHIKI
NIH 71 Teak



NISHIKI
NIH 54 Sumi



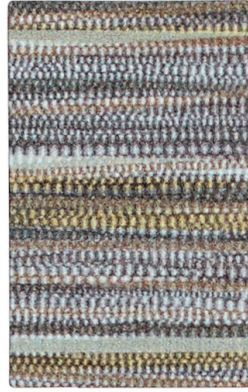
NISHIKI
NIH 64 Koi



NISHIKI
NIH 73 Adzuki



RIPPLE
RIP 10 Sunset



RIPPLE
RIP 11 Silent



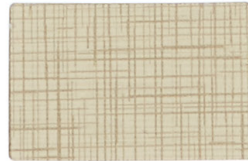
RIPPLE
RIP 14 Palisade Brown



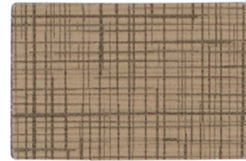
RIPPLE
RIP 13 Informal Gray



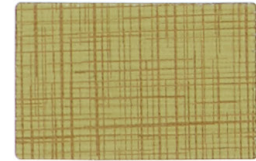
ETCH
ETC 37 Dusk



ETCH
ETC 26 Sand



ETCH
ETC 32 Marsh



ETCH
ETC 31 Wasabi



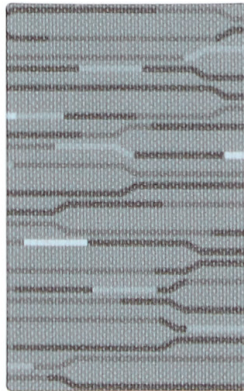
ETCH
ETC 25 Taupe



ETCH
ETC 40 Ganache



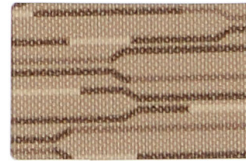
ETCH
ETC 41 Collegiate



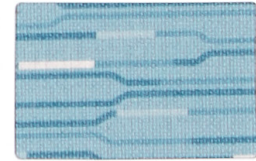
LEVEL
LVL 56 Slate



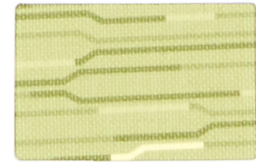
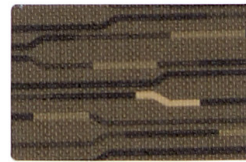
LEVEL
LVL 57 Shadow



LEVEL
LVL 58 Earth



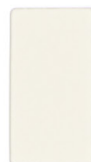
LEVEL
LVL 50 Mojito



SILICONE-AVAIL
SLA 76 Pelican



SILICONE-AVAIL
SLA 64 Dream



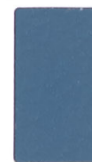
SILICONE-AVAIL
SLA 62 Natural



SILICONE-AVAIL
SLA 80 Castle



SILICONE-AVAIL
SLA 61 Pear



SILICONE-AVAIL
SLA 69 Academy



SILICONE-AVAIL
SLA 81 Infinity



SILICONE-AVAIL
SLA 86 Taupe



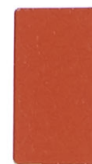
SILICONE-AVAIL
SLA 66 Stucco



SILICONE-AVAIL
SLA 88 Nori



SILICONE-AVAIL
SLA 79 Carob



SILICONE-AVAIL
SLA 72 Henna



SILICONE-AVAIL
SLA 90 Barolo

IMPRESS

High Performance Upholstery Collection

SPECIFICATIONS AND TECHNICAL INFORMATION

Pattern	Content	Finish/Backing	Durability	Maintenance
ETCH	Polyurethane made with Polycarbonate and Polyether Resins	Advanced Soil and Stain Resistant Top Coat + Ink Resistance Polyester/Cotton	100,000 D.R.	W Bleach Cleanable 10:1
FREQUENCY	100% Vinyl	Advanced Soil and Stain Resistant Top Coat + Ink Resistance Polyester	100,000 D.R.	WS Bleach Cleanable 10:1
GALILEO	Polyurethane made with Polycarbonate Resins	Advanced Soil and Stain Resistant Top Coat + Ink Resistance Polyester/Cotton	165,000 D.R.	WS Bleach Cleanable 5:1
LEVEL	100% Vinyl	Advanced Soil and Stain Resistant Top Coat Polyester	1,000,000 D.R.	WS Bleach Cleanable 10:1
IMPRESS WITH STA-KLEEN™	Polyurethane made with Polyether Resins	Sta-Kleen™ Ink + Stain Resistant Finish Polyester/Cotton	100,000 D.R.	WS Bleach Cleanable 5:1
NISHIKI	100% Vinyl	Advanced Soil and Stain Resistant Top Coat Polyester/Knit	250,000 D.R.	WS Bleach Cleanable 10:1
RIPPLE	100% Vinyl	Zeron® Protective Finish Polyester	100,000 D.R.	WS Bleach Cleanable 5:1
SILICONE-AVAIL	100% Silicone	Inherently Stain and Ink Resistant Polyester/Knit	200,000 D.R.	WS Bleach Cleanable 5:1

Bleach Cleanable - Spray a 5:1 or 10:1 ratio water / bleach mixture on fabric to disinfect. Thoroughly rinse with water and pat dry.

WS - For water-based stains use water-based cleaners. For oil-based stains use solvent-based cleaners. We recommend using a professional cleaning service.

W - Clean with water-based foam or water-based cleaners only. Do not use solvents. We recommend using a professional cleaning service.

Advanced Soil & Stain Resistant - A protective coating that's engineered to create a tough, effective barrier against germs, abrasion, and stains. It also guards against the surface growth of fungus, mold, and mildew spores, which can cause unpleasant odors and unsightly stains. Added **Ink Resistance** protects against graffiti and ink stains.

Inherently Stain and Ink Resistant - Naturally resists soil, stain, and ink.

Sta-Kleen™ Ink + Stain Resistant Finish - A long-lasting 'shield' that protects the surface of the upholstery, proving enhanced ink and stain resistance. Traditionally difficult stains, such as ball point ink and mustard can be easily cleaned with mild soap and water.

Zeron® Protective Finish - The protective finish on this product includes silver ion technology which inhibits the growth of microbes on the protected surface.

Reduced Environmental Impact - Reference www.NationalOfficeFurniture.com or www.cfstinson.com for details.

To view other colorways of these patterns, additional Stinson graded-in-fabrics, product applications and grades, and to link to the NOF/Stinson Sample Room, please visit www.NationalOfficeFurniture.com/Alliance.

Memo samples, pattern images, pattern information, and additional cleaning information are available at cfstinson.com.

*Multiple factors affect fabric durability and appearance retention, including end-user application and proper maintenance. Wyzenbeek results above 100,000 double rubs have not been shown to be an indicator of increased lifespan.

A satisfactory commercial match will be shipped. Due to industry standard dye lot variation, colors may not match exactly.



Greenguard certification applies to all patterns.

NATIONAL

1610 ROYAL STREET, JASPER IN 47549
TOLL FREE 800.482.1717
WEB NATIONALOFFICEFURNITURE.COM

Stinson®

C.F. Stinson, LLC
2849 Product Drive
Rochester Hills, MI 48309
cfstinson.com

A Unit of Kimball International ©2019
Form No. NSCCFSIMP
2019