

**Stinson**

**ENHANCE**

HIGH PERFORMANCE  
UPHOLSTERY COLLECTION





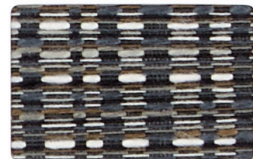
**LIFECYCLE**  
65049 Soleil



**MIGRATION**  
65038 Bridge



**STEPPE**  
65031 Cliff



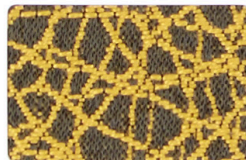
**RECHARGE WITH CELLIANT®**  
65165 Peppercorn



**ARMATURE**  
64972 Pier



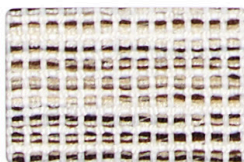
**ADAGIO**  
64714 Cliff



**KINETIC**  
64429 Acacia



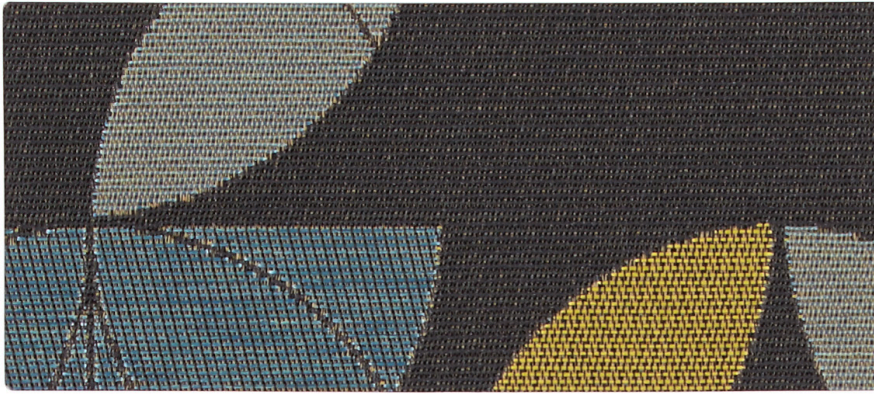
**NIMBLE**  
64364 Palladium



**GRAVITY**  
63970 Coconut



**COLOR BLOCK**  
65086 Twist



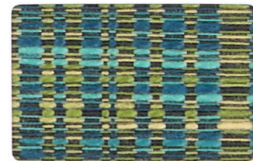
**LIFECYCLE**  
65048 Marshland



**MIGRATION**  
65036 Enclave



**STEPPE**  
65032 Seascape



**RECHARGE WITH CELLANT®**  
65163 Fresh



**ARMATURE**  
64976 Radar



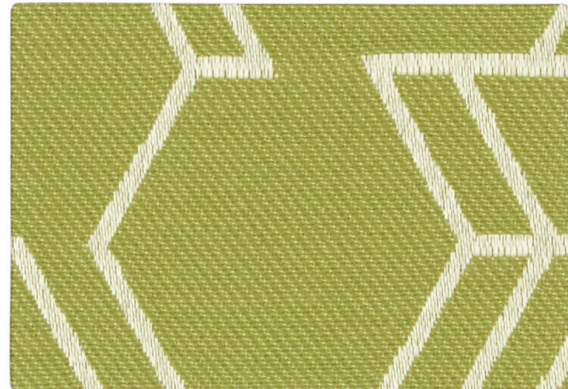
**ENHANCE WITH CELLANT®**  
65157 Twilight



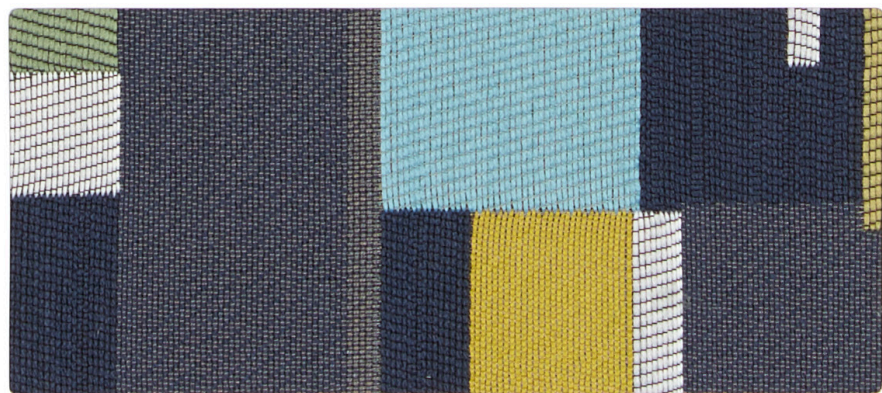
**ADAGIO**  
64712 Wild Rye



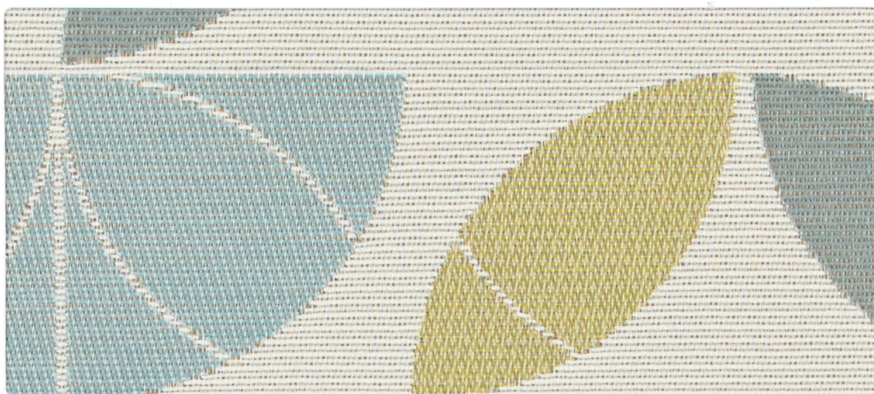
**ADAGIO**  
64715 Nautilus



**NIMBLE**  
64369 Tomatillo



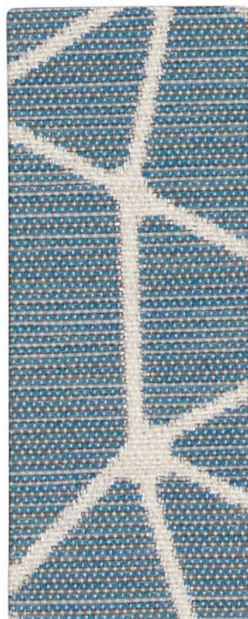
**COLOR BLOCK**  
65091 Coastline



**LIFECYCLE**  
65045 Sublime



**MIGRATION**  
65035 Utopia



**ARMATURE**  
64974 Breeze



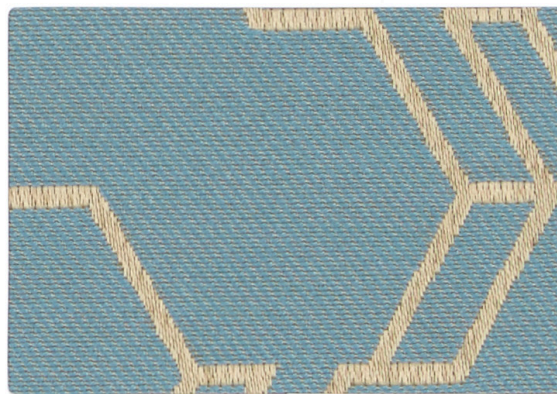
**ENHANCE WITH CELLANT®**  
65156 Water



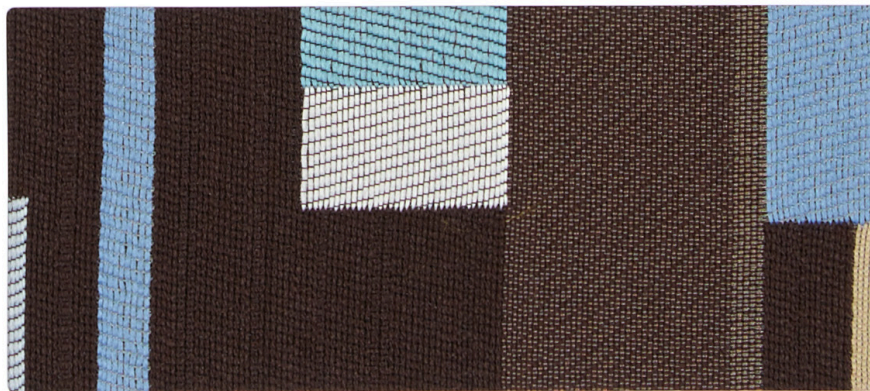
**ADAGIO**  
64708 Seaside



**Kinetic**  
64431 Shale



**NIMBLE**  
64367 Wedgewood Blue



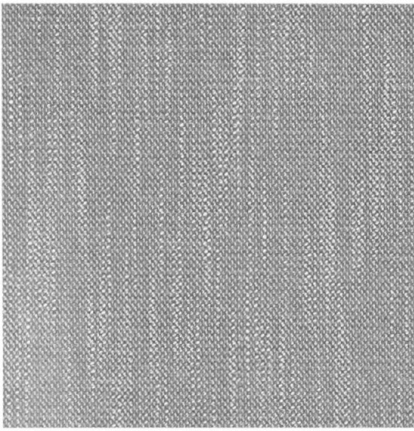
**COLOR BLOCK**  
65090 Manor



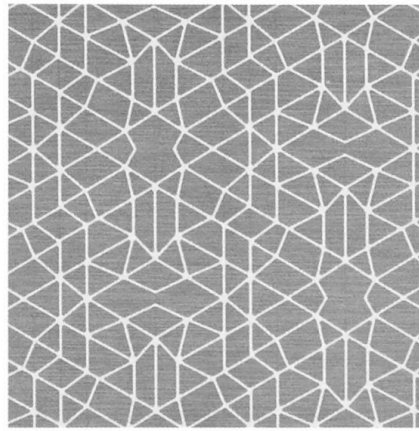
**STEPPE**  
65028 Plateau



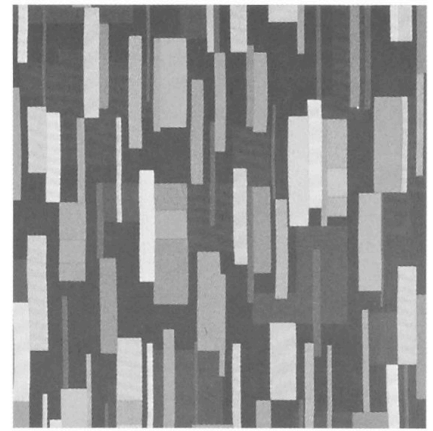
**GRAVITY**  
63979 Brindle



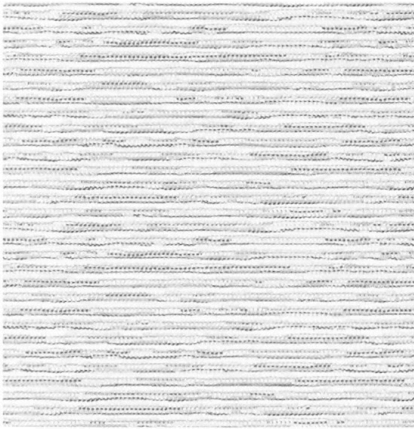
ADAGIO



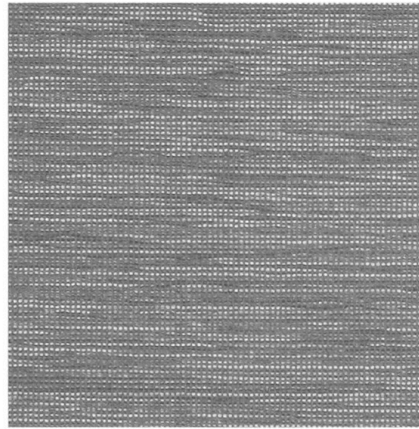
ARMATURE



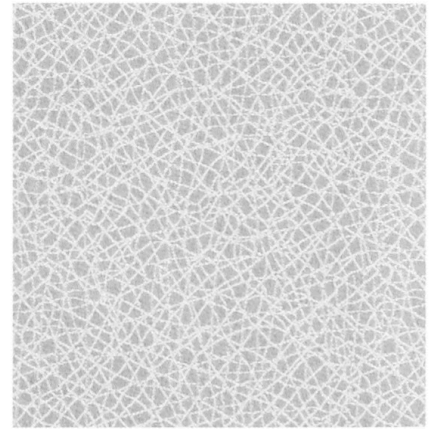
COLOR BLOCK



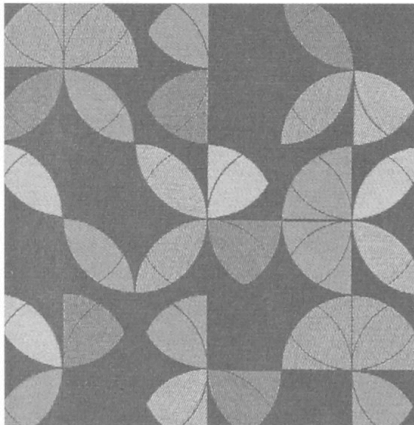
ENHANCE



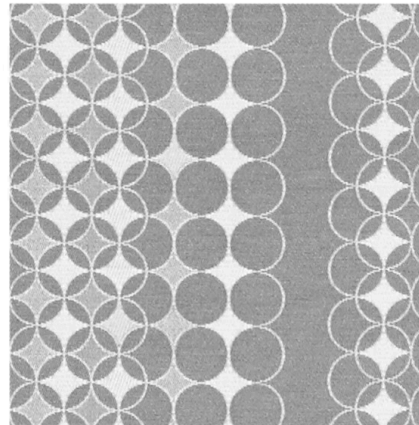
GRAVITY



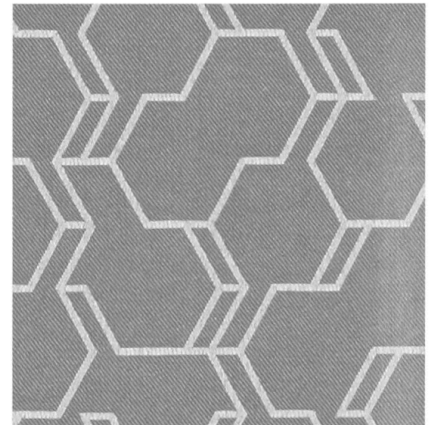
KINETIC



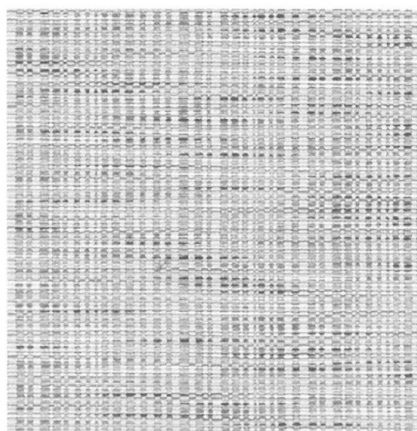
LIFECYCLE



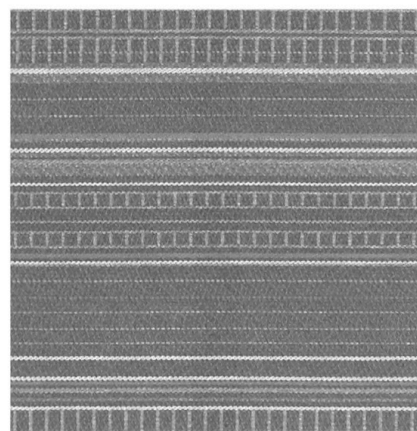
MIGRATION



NIMBLE



RECHARGE



STEPPE

# ENHANCE

## High Performance Upholstery Collection

### SPECIFICATIONS AND TECHNICAL INFORMATION

Pattern	Content	Finish/Backing	Durability	Maintenance
ADAGIO	100% Polyester	Crypton® Fluid Barrier, Crypton® Non-PFOA Soil & Stain Protection	100,000 D.R.	W
ARMATURE	36% Sunbrella® Solution Dyed Polyester, 34% Sunbrella® Solution Dyed Acrylic, 30% Non-Phthalate PVC Coated Polyester	Non-PFOA Stain Resistant Acrylic	100,000 D.R.	WS Bleach Cleanable 5:1
COLOR BLOCK	75% Post Consumer Recycled Polyester, 25% Solution Dyed Nylon	Non-PFOA Stain Resistant Acrylic	100,000 D.R.	WS Bleach Cleanable 5:1
ENHANCE WITH CELLIANT®	43% Celliant® Polyester, 26% Polyester, 17% Acrylic, 14% Rayon	Non-PFOA Stain Resistant Acrylic	75,000 D.R.	WS
GRAVITY	85% Polyester, 14% Post Consumer Recycled Polyester, 1% Solution Dyed Nylon	Non-PFOA Stain Resistant Acrylic	100,000 D.R.	WS Bleach Cleanable 5:1
KINETIC	100% Polyester	Crypton® Non-PFOA Soil & Stain Protection Crypton® Fluid Barrier	63,000 D.R.	W Bleach Cleanable 10:1
LIFECYCLE	100% Post Industrial Recycled Solution Dyed Nylon	Non-PFOA Stain Resistant Acrylic	100,000 D.R.	WS Bleach Cleanable 5:1
MIGRATION	100% Post Industrial Recycled Solution Dyed Nylon	Non-PFOA Stain Resistant Acrylic	100,000 D.R.	WS Bleach Cleanable 5:1
NIMBLE	57% Polyester, 28% Post Industrial Recycled Polyester, 15% Post Consumer Recycled Polyester	Crypton® Non-PFOA Soil & Stain Protection Crypton® Fluid Barrier	75,000 D.R.	W Bleach Cleanable 10:1
RECHARGE WITH CELLIANT®	58% Polyester, 42% Celliant® Polyester	Non-PFOA Stain Resistant Acrylic	100,000 D.R.	WS Bleach Cleanable 5:1
STEPPE	61% Post Consumer Recycled Solution Dyed Nylon, 39% Solution Dyed Nylon	Non-PFOA Stain Resistant Acrylic	100,000 D.R.	WS Bleach Cleanable 10:1

**Bleach Cleanable** - Spray a 5:1 or 10:1 ratio water / bleach mixture on fabric to disinfect. Thoroughly rinse with water and pat dry.

**WS** - For water-based stains use water-based cleaners. For oil-based stains use solvent-based cleaners. We recommend using a professional cleaning service.

**W** - Clean with water-based foam or water-based cleaners only. Do not use solvents. We recommend using a professional cleaning service.

**Non-PFOA Stain Resistant** - A topical finish that assists in protecting the textile from spills and stains and is formulated with no detectable perfluorooctanoic acid (c8 chemistry).

**Crypton Non-PFOA Soil and Stain Resistant** - An integrated finish that provides resistance to spills, stains, odors, and microbial growth, and has a moisture barrier backcoating.

**Celliant®** - The industry's first collection of responsive woven textiles incorporating proprietary infrared fiber technology that promotes more energy and reduces fatigue while sitting.

**Reduced Environmental Impact** - Reference [www.NationalOfficeFurniture.com](http://www.NationalOfficeFurniture.com) or [www.cfstinson.com](http://www.cfstinson.com) for details.

To view other colorways of these patterns, additional Stinson graded-in-fabrics, product applications and grades, and to link to the NOF/Stinson Sample Room, please visit [www.NationalOfficeFurniture.com/Alliance](http://www.NationalOfficeFurniture.com/Alliance).

Memo samples, pattern images, pattern information, and additional cleaning information are available at [cfstinson.com](http://cfstinson.com).

\*Multiple factors affect fabric durability and appearance retention, including end-user application and proper maintenance. Wyzenbeek results above 100,000 double rubs have not been shown to be an indicator of increased lifespan.

A satisfactory commercial match will be shipped. Due to industry standard dye lot variation, colors may not match exactly.

**GREENGUARD GOLD** Certification applies to all patterns.

**facts™ Silver** applies to patterns *Lifecycle* and *Migration*.

**facts™ Gold** applies to *Steppe*.



# NATIONAL

1610 ROYAL STREET, JASPER IN 47549  
TOLL FREE 800.482.1717  
WEB [NATIONALOFFICEFURNITURE.COM](http://NATIONALOFFICEFURNITURE.COM)

# Stinson®

C.F. Stinson, LLC  
2849 Product Drive  
Rochester Hills, MI 48309  
[cfstinson.com](http://cfstinson.com)

A Unit of Kimball International ©2019  
Form No. NSCCFSENH  
2019