



Maleny

Street tree strategy

Description of area

Located on the Maleny plateau at the southern end of the Blackall Range scenic drive, the 860 hectare plan area of Maleny encompasses the Maleny township and surrounding rural and residential landscapes. The area is characterised by rolling green hills, open grown fig trees, the beautifully preserved hinterland rainforest of Mary Cairncross Scenic Reserve and the stunning panorama of the mountain top location.

Vibrant and eclectic, the Maleny township reflects the ideals of its local community. The values of health and well being, sustainable living and environmental responsibility are embedded in the fabric, and evident in the spirit, of the town. With timber getting origins, the township also has an historic form and character.

Extensive open/cleared lands evident in the plan area's *Foliage and Shade Cover* map demonstrate the primary land use of agriculture. Rural residential living is the other major land use of the plan area.

Trees and landscape character

Before settlement the plan area was mostly covered in rainforest (with the exception of small pockets of vegetated swamp). Bunya pine and red cedar attracted the timber getters and were extensive logged. Hoop and kauri pine were also most likely present as well as flooded gum which dominated areas of wet sclerophyll tall open forest (with vine forest occurring beneath). Fig trees, beech, giant water gum, laurels, silky oak, quandong, turpentine, brush box, tallowwood, iron bark, pink bloodwood and blackbutt are other key species of the pre-clear *Regional Ecosystems* mapped for the area.

The natural landscape contributes significantly to the Maleny 'sense of place'. The township also has a strong cultivated landscape character. The volcanic soils of the plateau can support a range of species and good species diversity is evident. Figs, tulipwood, silky oak, hoop pine, liquidambar, kurrajong, lace bark, white oak and lemon myrtle are the most prevalent street tree species. Illawarra flame, tibouchina and the occasional poinciana or jacaranda provide splashes of colour to the landscape.

Canopy cover

The percentage canopy cover over all lands as well as the volume of trees within road reserves is below average for the Sunshine Coast region (33% cover on all lands and 29% cover on road reserve lands). *Foliage and Shade Cover* mapping clearly shows the large proportion of open pastures that help account for the below-average statistics reported. Establishing street trees of the relatively young residential landscape also help to explain the lower than average canopy cover figures reported for road reserve tree cover.

Major opportunities and constraints

Despite poor canopy cover evident, there's little opportunity for the planting of new trees in the Maleny town centre. This presents opportunity to complete the town streetscape with good potential for minor infill planting to achieve a 100% street tree occupancy rate.

Opportunity exists to extend street tree avenues in the Maleny hospital precinct and to create more shade around the local high school, as well as other areas of high pedestrian activity.

Beyond the immediate plan area there are numerous additional opportunities for the establishment of avenues as well as feature plantings, although existing view lines to the east and south east are a significant constraint.

Adopt A Street Tree Programs appear to have the greatest potential for new street tree establishment in streets immediately south of Macadamia Drive.

Street tree planting strategies

Street tree planting in the Maleny town centre sustains the leafy vibrancy of the town.

Infill planting seeks to achieve and sustain a 100% street tree occupancy rate in the town's centre.

Key footpath networks are shaded by street trees planted at close centres.

Significant views and vistas are preserved through careful positioning of new street tree plantings.

A diverse palette of tree species is used and generally a mixed planting theme followed with greater focus on the selection of local rainforest species for street trees.

Rainforest species form the base local residential street tree palette and are used wherever appropriate.

Avenues of trees in and around the town are extended and sustained through infill planting. Avenues on the outskirts of town and beyond the immediate plan area are strengthened over time.

Canopy building occurs in strategic locations beyond the immediate plan area where large canopy trees can be readily established.

Adopt A Street Tree planting partnerships focus on streets in residential estates south of Macadamia Drive.

Street tree palettes

Signature trees

Avenue trees / major thoroughfares

- Acmena smithii* (riberry)
- Backhousia citriodora* (lemon myrtle)
- Elaeocarpus eumundii* (Eumundi quandong)
- Elaeocarpus kirtonii* (hard quandong)
- Flindersia schottiana* (cudgerie)
- Flindersia bennettiana* (Bennett's ash)
- Liquidambar styraciflua* (sweetgum)
- Podocarpus elatus* (brown pine)
- Syzygium crebrinerve* (purple cherry tree)
- Syzygium ingens* (syn. *Acmena ingens*) (red apple lilly pilly)
- Vitex lignum-vitae* (satinwood)
- Waterhousia floribunda* (syn. *Syzygium floribundum*) (weeping lilly pilly)

Feature trees for large spaces

- Agathis robusta* (Queensland kauri pine)
 - Araucaria bidwillii* (bunya pine) (garden beds only)
 - Araucaria cunninghamii* (hoop pine)
 - Cinnamomum oliveri* (giant ironwood)
 - Cryptocarya erythroxylon* (rose maple)
 - Elaeocarpus grandis* (blue quandong)
 - Ficus macrophylla* (Moreton Bay fig)
 - Ficus obliqua* (small-leaved fig)
 - Ficus watkinsiana* (strangler fig)
 - Gmelina leichardtii* (white beech)
 - Grevillea hilliana** (white silky oak) (trial species)
 - Magnolia grandiflora* (bull magnolia)
 - Peltophorum pterocarpum* (yellow flame)
 - Syzygium francisii* (giant water gum)
 - Syzygium moorei* (rose apple)
 - Tamarindus indica* (tamarind)
 - Toona ciliata* (syn. *australis*) (red cedar)
- See also *Locally native species for natural character features* palettes for use where appropriate.

Signature trees (cont.)

Trees for accent and highlights

- Alloxylon flammeum* (Queensland tree waratah)
- Brachychiton acerifolius* (Illawarra flame tree)
- Brachychiton discolor* (lace bark)
- Hymenosporum flavum* (native frangipani) (use in groupings only)
- Magnolia* 'Little Gem' (little gem magnolia)
- Morus nigra* (mulberry)
- Stenocarpus sinuatus* (firewheel)
- Syzygium* (syn. *Acmena*) *ingens* (red apple lilly pilly)
- Tabebuia argentea* (trumpet tree)
- Tabebuia palida* (silver trumpet tree)

Trees for local streets

- Backhousia citriodora* (lemon myrtle)
- Barklya syringifolia* (crown of gold)
- Buckinghamia celcissima* (ivory curl)
- Castanospora alphanthii** (brown tamarind) (trial locations)
- Ceratopetalum gummiferum* (NSW Christmas bush)
- Cryptocarya obovata** (pepperberry) (trial locations)
- Cryptocarya triplinervis** (three-veined laurel) (trial locations)
- Cupaniopsis parvifolia* (small leaved tuckeroo)
- Elaeocarpus obovatus* (hard quandong)
- Harpullia hillii** (blunt leaf tulip) (trial locations)
- Harpullia pendula* (tulipwood)
- Leptospermum brachyandrum* var. *longifolia* (tea tree)
- Mallotus discolor** (yellow kamala) (trial locations)
- Mallotus phillippensis** (red kamala) (trial locations)
- Melaleuca* (syn. *Callistemon*) *viminialis* 'Dawson River Weeper' (weeping bottle brush)
- Podocarpus elatus* (brown pine)
- Syzygium australe* (brush cherry)
- Syzygium crebrinerve** (purple cherry tree) (trial locations)
- Syzygium* (syn. *Acmena*) *hemilampra* (blue satinash)
- Tristaniopsis laurina* 'Luscious' (water gum)

Locally native species for natural character features

Rainforest

- Aphananthe philippinensis* (rough-leaved elm)
- Argyrodendron actinophyllum* (black booyong)
- Argyrodendron trifoliolatum* (white booyong)
- Castanospermum australe* (Moreton Bay chestnut)
- Cryptocarya hypospodia* (purple laurel)
- Cryptocarya obovata* (pepperberry)
- Cryptocarya triplinervis* (three-veined laurel)
- Ficus coronata* (sand paper fig)
- Ficus fraseri* (Fraser Island fig)
- Gmelina leichardtii* (white beech)

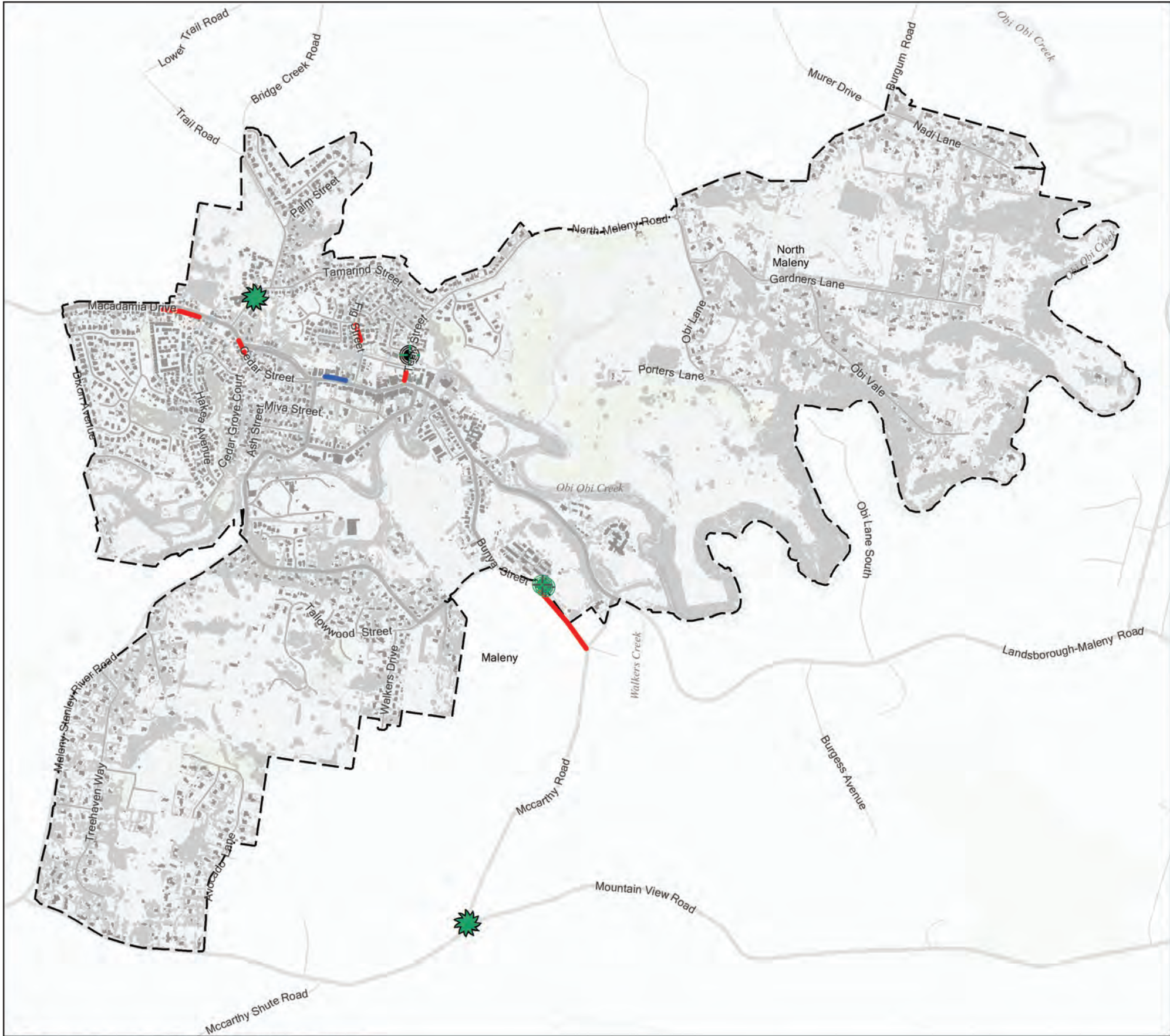
Street tree palettes are also appropriate for use in Curramore, Balmoral Ridge, North Maleny, Bald Knob, Ellaman Creek, Reesville, Wootha, Witta and Booroobin.

Maleny Local Plan Area



Priority Planting Plan

Maleny Local Plan Area



Legend

Priority planting locations

Nodes and Parkland perimeters

- Esplanade no view
- Park perimeter planting
- Space for group planting
- Space for single compact tree
- Space for single large canopy tree
- Vegetative screen or buffer

Priority planting locations

Major thoroughfares and Walkable routes

- Road verge - Key pedestrian route
- Road verge - Local access or residential street
- Road verge - Major thoroughfare
- Local Plan Area boundary
- Priority Development Area (Maroochydore City Centre)
- Priority Development Area (Caloundra South)
- Declared Master Planned Areas (Maroochydore & Palmview)



Disclaimer
While every care is taken to ensure the accuracy of this product, neither the Sunshine Coast Regional Council nor the State of Queensland makes any representations or warranties about its accuracy, reliability, completeness or suitability for any particular purpose and disclaims all responsibility and all liability (including without limitation, liability in negligence) for all expenses, losses, damages (including indirect or consequential damage) and costs that may occur as a result of the product being inaccurate or incomplete in any way or for any reason.

© Crown and Council Copyright Reserved 2014
Geocentric Datum of Australia 1994 (GDA94)

0 85 170 340 510 680
Metres

1:18,000 at A3 size



Path: F:\MapRequests\StreetTreeMasterPlan\Maps\HulkProducedMaps\PPP_MAPBOOK_Landscape_20160628.mxd