



Forest Glen / Kunda Park / Tanawha

Street tree strategy

Description of area and land use

The Forest Glen / Kunda Park / Tanawha local plan area is one of the most variable in the Sunshine Coast Council region. With a mix of land uses, the landscape ranges from cool eucalypt forest to shade-free industrial precincts.

Both established and establishing residential areas occur in the plan area. Established residential areas are mostly found in Tanawha and Mons and are generally rural residential in character (lots are large and well-vegetated). Younger residential estates can be found in Forest Glen along with commercial and industrial precincts, residential and retirement living and a caravan park.

Kunda Park is one the Sunshine Coast's largest industrial districts with few trees and very little shade. The low proportion of trees can be attributed to the need for high visibility of businesses especially to the passing traffic of Maroochydore Road.

Trees and landscape character

The tall eucalypts and natural forest environment of Tanawha forms an outstanding backdrop to the section of the Bruce Highway that runs through the plan area. The natural landscape beyond is characterised by ridges of tall open forest and pockets of notophyll vine forest in gullies. Flooded gum, blackbutt, tallowwood, pink and brown bloodwood, turpentine, brush box and swamp box are the dominant tree species while the lush sub-tropical under-story is characterised by cabbage tree/fan palms. The Tanawha Tourist Drive is a blend of this natural character and cultivated landscape character with *Liquidambar styraciflua* (sweet gum) providing colour, contrast and seasonal interest.

Canopy cover

Despite the establishing residential areas and industrial precincts within, Forest Glen / Kunda Park / Tanawha is one of the best performing areas of the Sunshine Coast Council region according to tree canopy statistics reported (canopy extent, vegetation volume and the shade value of trees growing on both public and private lands). The plan area's *Foliage and Shade Cover* map shows that the tallest trees in the region are found within the plan area, with 12.7m the average height of vegetation.

Major opportunities and constraints

The appearance and vibrancy of the village of Forest Glen could be significantly lifted as an outcome of additional street tree plantings. Buffer planting between the Bruce Highway and car parking areas north of the village would help to not only build canopy in the area but also provide better visual definition. Gateway planting opportunities exist at the Mons Road intersection, south of the village, where ample room for the establishment of large feature trees exists.

Prospects to build on character plantings and enhance the scenic amenity and experience of Tanawha Tourist Drive are good, with key nodes identified for feature plantings in and around existing tourist attractions. The intersection of Tanawha Tourist Drive and Crosby Hill Road presents promising landmark/gateway planting potential.

The potential to establish landmark plantings appears achievable in several locations on Mons Road to the west of the plan area. Opportunity to establish an commemorative feature planting near the locally significant Buderim Palmwoods Heritage Tramway trail, in conjunction with the community also exists.

Adopt A Street Tree Program partnerships should target the industrial precinct of Kunda Park (both north and south of Maroochydore Road) as well as Forest Glen's industrial precinct where businesses could benefit from shade, cooling and visual softening with new street trees. Partnerships with business owners and tenants have the potential to ensure signs or key brand components remain visible from the street while the amenity and comfort of these areas is increased.

Street tree planting strategies

Street trees in the Forest Glen and Tanawha localities are used to reinforce the locality's natural forest setting.

High impact sites are prioritised for the establishment of entry statement and feature plantings.

Colour, contrast and seasonal interest is strengthened along the scenic Tanawha Tourist Drive while the heritage character of Mons is preserved with key feature plantings marking sites of cultural significance.

Canopy building in the Forest Glen shopping strip is prioritised. Street tree plantings are used to enhance the look, feel and comfort of the commercial centre.

Corporate and local business partnerships are formed to help build much needed tree canopy in the local plan area's industrial precincts while retaining visibility of businesses to passing traffic.

Street tree palettes

Signature trees
Signature and avenue trees <i>Corymbia gummifera</i> (red bloodwood) <i>Corymbia intermedia</i> (pink bloodwood) <i>Corymbia trachyphloia</i> (brown bloodwood) <i>Elaeocarpus grandis</i> (blue quandong) <i>Eucalyptus grandis</i> (flooded gum) <i>Eucalyptus microcorys</i> (tallowwood) <i>Eucalyptus pilularis</i> (blackbutt) <i>Eucalyptus propinqua</i> (grey gum) <i>Ficus coronata</i> (sand paper fig) <i>Ficus fraseri</i> (Fraser Island fig) <i>Ficus macrophylla</i> (Moreton Bay fig) <i>Flindersia australis</i> (Crow's ash) <i>Flindersia schottiana</i> (cudgeriee) <i>Grevillea robusta</i> (silky oak) <i>Liquidambar styraciflua</i> (sweetgum) (where existing only) <i>Magnolia grandiflora</i> (bull magnolia) <i>Peltophrum pterocarpum</i> (yellow poinciana) <i>Podocarpus elatus</i> (brown pine) <i>Syncarpia glomulifera</i> (turpentine) <i>Syzygium australe</i> (brush cherry) <i>Syzygium francisii</i> (giant water gum) <i>Syzygium paniculata</i> (magenta cherry) (Forest Glen Shopping Village) See also <i>Locally native species for natural character features - Rainforest palette</i> for use where appropriate. Trees for accent and highlights <i>Archontophoenix cunninghamiana</i> (piccabeen palm) <i>Brachychiton acerifolius</i> (Illawarra flame tree) <i>Colvillea racemosa</i> (Colville's glory) <i>Livistona australis</i> (cabbage tree palm) <i>Magnolia</i> 'Little Gem' (little gem magnolia) <i>Schizolobium parahyba</i> (Brazilian fern tree) (Tanawha tourist precinct)

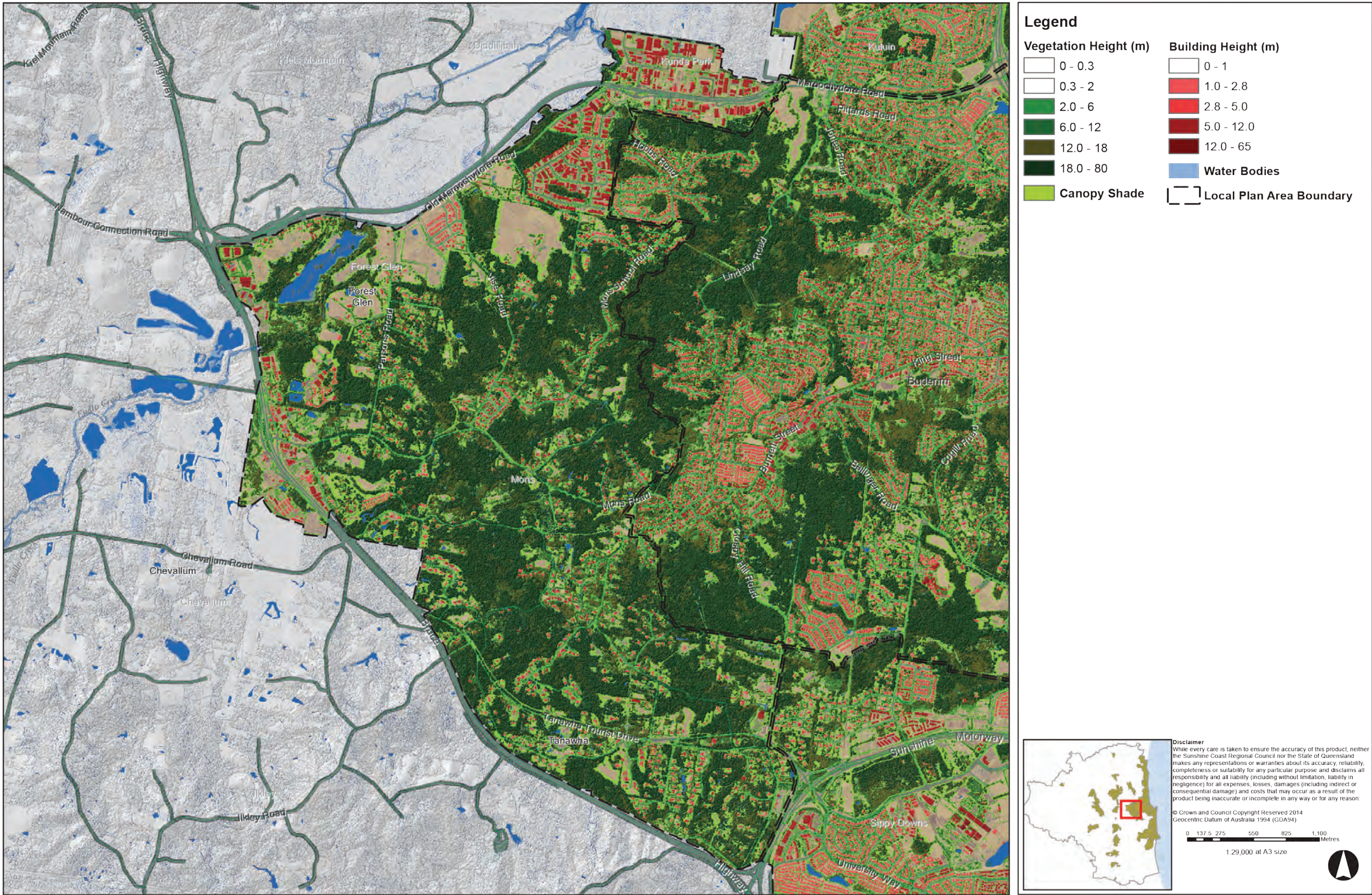
Trees for local streets
<i>Backhousia citriodora</i> (lemon myrtle) <i>Buckinghamia celcissima</i> (ivory curl) <i>Cryptocarya glaucescens</i> * (jackwood) (trial locations) <i>Cryptocarya hypospodia</i> * (purple laurel) (trial locations) <i>Cryptocarya obovata</i> * (pepperberry) (trial locations) <i>Cupaniopsis anacardioides</i> (tuckeroo) <i>Cupaniopsis parvifolia</i> (small leaved tuckeroo) <i>Diospyros geminata</i> * (ebony) (trial locations) <i>Elaeocarpus eumundii</i> (Eumundi quandong) (where existing only) <i>Elaeocarpus obovatus</i> (hard quandong) <i>Flindersia australis</i> (Crow's ash) <i>Flindersia xanthoxyla</i> (long jack/yellowwood) <i>Harpullia pendula</i> (tulipwood) <i>Lophostemon confertus</i> (brush box) <i>Lophostemon suaveolens</i> (swamp box) <i>Melaleuca quinquenervia</i> (broad-leaved paperbark) <i>Olea paniculata</i> * (native olive) (trial locations) <i>Syzygium australe</i> (brush cherry) <i>Syzygium paniculata</i> (magenta lilly pilly) <i>Waterhousia floribunda</i> (syn. <i>Syzygium floribundum</i>) (weeping lilly pilly) <i>Xanthostemon chrysanthus</i> (golden penda)

Locally native species for natural character features
Woodland / open forest <i>Corymbia gummifera</i> (red bloodwood) <i>Corymbia intermedia</i> (pink bloodwood) <i>Corymbia trachyphloia</i> (brown bloodwood) <i>Corymbia tessellaris</i> (Moreton Bay ash) <i>Eucalyptus grandis</i> (flooded gum) <i>Eucalyptus microcorys</i> (tallowwood) <i>Eucalyptus pilularis</i> (blackbutt) <i>Eucalyptus resinifera</i> (red mahogany) <i>Eucalyptus siderophloia</i> (grey ironbark) <i>Eucalyptus tereticornis</i> (blue gum/forest red gum) <i>Eucalyptus tindaliae</i> (Tindale's stringybark) <i>Melaleuca quinquenervia</i> (broad-leaved paperbark)

Locally native species for natural character features (cont.)
Rainforest <i>Agathis robusta</i> (kauri pine) <i>Aphananthe philippinensis</i> (rough-leaved elm) <i>Araucaria cunninghamii</i> (hoop pine) <i>Argyrodendron trifoliolatum</i> (white booyong) <i>Cryptocarya hypospodia</i> (purple laurel) <i>Cryptocarya obovata</i> (pepperberry) <i>Cryptocarya triplinervis</i> (three-veined laurel) <i>Cupaniopsis parvifolia</i> (small leaved tuckeroo) <i>Diospyros geminata</i> (ebony) <i>Drypetes deplanchei</i> (yellow tulipwood) <i>Elaeocarpus grandis</i> (blue quandong) <i>Flindersia australis</i> (Crow's ash) <i>Flindersia xanthoxyla</i> (long jack/yellowwood) <i>Ficus coronata</i> (sand paper fig) <i>Ficus fraseri</i> (Fraser Island fig) <i>Ficus macrophylla</i> (Moreton Bay fig) <i>Grevillea robusta</i> (silky oak) <i>Nauclea orinetalis</i> (yellow cheesewood) <i>Olea paniculata</i> (native olive) <i>Syzygium australe</i> (brush cherry) <i>Syzygium francisii</i> (giant water gum)

Foliage and Shade Cover

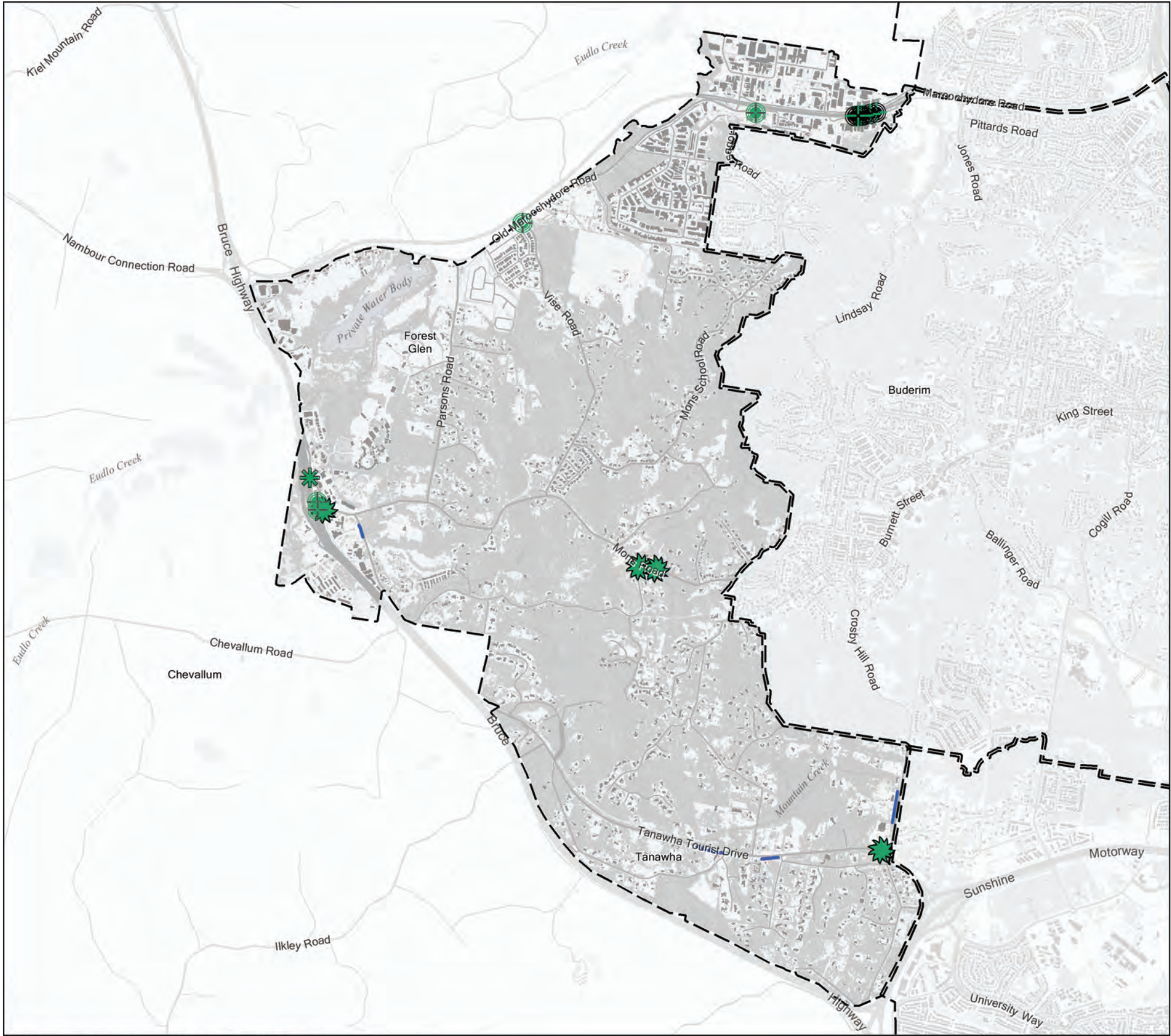
Forest Glen / Kunda Park / Tanawha Local Plan Area



Path: F:\MapRequests\StreetTreeMasterPlan\Maps\HukProducedMaps\FoliageShadeCover_MAPBOOK_Landscape_20160630.mxd

Priority Planting Plan

Forest Glen / Kunda Park / Tanawha Local Plan Area



Legend

Priority planting locations

Nodes and Parkland perimeters

- Esplanade no view
- Park perimeter planting
- Space for group planting
- Space for single compact tree
- Space for single large canopy tree
- Vegetative screen or buffer

Priority planting locations

Major thoroughfares and Walkable routes

- Road verge - Key pedestrian route
- Road verge - Local access or residential street
- Road verge - Major thoroughfare
- Local Plan Area boundary
- Priority Development Area (Maroochydore City Centre)
- Priority Development Area (Caloundra South)
- Declared Master Planned Areas (Maroochydore & Palmview)



Disclaimer
While every care is taken to ensure the accuracy of this product, neither the Sunshine Coast Regional Council nor the State of Queensland makes any representations or warranties about its accuracy, reliability, completeness or suitability for any particular purpose and disclaims all responsibility and all liability (including without limitation, liability in negligence) for all expenses, losses, damages (including indirect or consequential damage) and costs that may occur as a result of the product being inaccurate or incomplete in any way or for any reason.

© Crown and Council Copyright Reserved 2014
Geocentric Datum of Australia 1994 (GDA94)

0 137.5 275 550 825 1,100 Metres

1:29,000 at A3 size



Path: F:\MapRequests\StreetTreeMasterPlan\Maps\HulkProducedMaps\PPP_MAPBOOK_Landscape_20160628.mxd