

Guidelines for Creation and Submission of ADAC

Version 5.0.1

© Sunshine Coast Regional Council.
Sunshine Coast Council™ is a registered trademark
of Sunshine Coast Regional Council.

www.sunshinecoast.qld.gov.au
mail@sunshinecoast.qld.gov.au
T 07 5475 7272 F 07 5475 7277
Locked Bag 72 Sunshine Coast Mail Centre Qld 4560

Acknowledgements

Council wishes to thank all contributors and stakeholders
involved in the development of this document.

Disclaimer

Information contained in this document is based on
available information at the time of writing. All figures
and diagrams are indicative only and should be referred
to as such. While the Sunshine Coast Regional Council
has exercised reasonable care in preparing this
document it does not warrant or represent that it is
accurate or complete. Council or its officers accept no
responsibility for any loss occasioned to any person
acting or refraining from acting in reliance upon any
material contained in this document.

| VERSION NO | DISCRIPTION & DISTRIBUTION | DATE | COMMENTS |
|----------------|--|------------|----------------------------------|
| 1.0 | ADAC FIRST RELEASE | 2014 | REVIEWED AND UPDATED |
| 1.4 | SUNSHINE COAST COUNCIL INITIAL RELEASE | 03/10/2014 | FOR DISTRIBUTION |
| 2.0 | SUNSHINE COAST COUNCIL DOCUMENT RESTRUCTURED AND UPDATED | 03/12/2015 | WEB PAGE UPDATE AND DISTRIBUTION |
| 3.0 | ASSET CAPTURE – PITS ROAD EDGE – PAVEMENT EXTENSION WSUD AREA – COMPLEX – SPILLWAYS OPEN DRAIN DIAGRAMS MANDATORY ATTRIBUTES UPDATED LANDSCAPE AREA GLOBAL ASSET ATTRIBUTION UPDATED | 08/03/2017 | FOR DISTRIBUTION |
| 3.1 | ROAD ISLAND / DEFINITION UPDATED | 02/05/2017 | |
| 4.0 | TREES – REVISED GENERAL FIXTURES - REVISED PATHWAY / CYCLEWAY – REVISED ROAD PATHWAYS - REVISED WATER SUPPLY – NEW ADDITION SEWERAGE- NEW ADDITION STORMWATER PITS - REVISED | 21/08/2017 | |
| 4.1 | HEADWALL / ENDWALL TYPE DEFINITION | 05/10/2017 | |
| 4.2 | PITS – PROFILE IMAGES WSUD COMPLEX AREA | 10/10/2018 | |
| 5.0 (4.2.1) | TRAFFIC ISLANDS ACTIVITY POINT SEDIMENT FOREBAYS BARRIER CONTINUOUS SIGN | 29/01/2019 | FOR DISTRIBUTION |
| 4.2.2 | PROJECT ATTRIBUTION ASSET CAPTURE GUIDELINES – PARAGRAPH 3 INTRODUCTION TO ADAC XML – PARAGRAPH 7 SIGNS | 31/10/2019 | FOR DISTRIBUTION |

| | | | |
|-------|--|------------|------------------|
| | <p>TREES</p> <p>WATER PIPES</p> <p>VALVES</p> <p>STORMWATER PITS</p> | | |
| 4.2.3 | DATUM INFORMATION UPDATE TO GDA2020 | 07/01/2021 | FOR DISTRIBUTION |
| 5.0.1 | <p>GLOBAL TYPES – ATTRIBUTION</p> <p>OPEN SPACE AREA – POSITIONAL ACCURACY</p> <p>ACTIVITY AREA – ATTRIBUTION, POSITIONAL ACCURACY</p> <p>ARTWORK – ASSET CAPTURE</p> <p>BARBEQUES – ATTRIBUTION</p> <p>BARRIER CONTINUOUS – ASSET CAPTURE, POSITIONAL ACCURACY</p> <p>BUILDING – ASSET CAPTURE, POSITIONAL ACCURACY</p> <p>ELECTRICAL CONDUIT – POSITIONAL ACCURACY</p> <p>ELECTRICAL FITTING – POSITIONAL ACCURACY</p> <p>GENERAL FIXTURES – GENERAL INFORMATION, ASSET CAPTURE</p> <p>LANDSCAPE AREA – ATTRIBUTION, POSITIONAL ACCURACY</p> <p>RETAINING WALL – ASSET CAPTURE, POSITIONAL ACCURACY</p> <p>SHELTERS – ASSET CAPTURE (GEOMETRY), POSITIONAL ACCURACY</p> <p>STORMWATER END STRUCTURE – GENERAL INFORMATION, ASSET CAPTURE (GEOMETRY), ATTRIBUTION, POSITIONAL ACCURACY</p> <p>STORMWATER FITTING – POSITIONAL ACCURACY</p> <p>FLOW MANAGEMENT DEVICE</p> <p>GPT COMPLEX – POSITIONAL ACCURACY</p> <p>GPT SIMPLE – ATTRIBUTION, POSITIONAL ACCURACY</p> <p>NON GPT SIMPLE – POSITIONAL ACCURACY</p> <p>STORMWATER PIPE – POSITIONAL ACCURACY</p> <p>STORMWATER PIT – ASSET CAPTURE, ATTRIBUTION, POSITIONAL ACCURACY, TABLE</p> <p>SURFACE DRAIN - ATTRIBUTION</p> | 13/05/2022 | FOR DISTRIBUTION |

| | | | |
|--|--|--|--|
| | <p>WSUD COMPLEX AREA – ASSET CAPTURE, POSITIONAL ACCURACY</p> <p>PARKING – POSITIONAL ACCURACY</p> <p>PATH STRUCTURE – POSITIONAL ACCURACY</p> <p>PATHWAY / CYCLEWAY – ASSET CAPTURE, POSITIONAL ACCURACY</p> <p>PRAM RAMP - POSITIONAL ACCURACY</p> <p>PAVEMENT - POSITIONAL ACCURACY</p> <p>ROAD EDGE – ATTRIBUTION, POSITIONAL ACCURACY</p> <p>ROAD ISLAND - POSITIONAL ACCURACY</p> <p>ROAD PATHWAY - POSITIONAL ACCURACY</p> <p>SUB SOIL DRAIN - POSITIONAL ACCURACY</p> <p>ROAD SAFETY BARRIER</p> <p>BRIDGE EXTENT, BRIDGE DECK, BRIDGE SUPERSTRUCTURE</p> <p>WATER PIPE – ATTRIBUTION</p> <p>WATER METER – ATTRIBUTION</p> <p>WATER SERVICE FITTING – ATTRIBUTION</p> <p>WATER VALVE - ATTRIBUTION</p> <p>STORAGE TANK</p> <p>NON-PRESSURE PIPE – ATTRIBUTION</p> <p>PRESSURE PIPE - ATTRIBUTION</p> | | |
|--|--|--|--|

Contents

| | |
|--|-----------|
| 1. Purpose..... | 9 |
| 2. Introduction to ADAC XML | 9 |
| 3. General Requirements | 10 |
| 4. Datum Information | 10 |
| 5. Asset Capture Guidelines..... | 10 |
| 5.1 Project Attribution | 10 |
| 5.2 Global Asset Attribution | 11 |
| 5.3 Cadastre Assets | 13 |
| 5.3.1 Cadastral Connection..... | 13 |
| 5.3.2 Easement..... | 13 |
| 5.3.3 Lot Parcels | 13 |
| 5.3.4 Road Reserve | 14 |
| 5.3.5 Survey Mark..... | 14 |
| 5.3.6 Water Course Reserve..... | 14 |
| 5.3.7 Chainage Lines | 14 |
| 5.4 Surface | 14 |
| 5.4.1 Contour/Spot Height..... | 14 |
| 5.4.2 Breaklines | 15 |
| 5.4.3 Profile Lines | 15 |
| 5.5 Open Space Assets | 15 |
| 5.5.1 Open Space Area..... | 15 |
| 5.5.2 Activity Area | 16 |
| 5.5.3 Activity Point | 16 |
| 5.5.4 Artwork..... | 17 |
| 5.5.5 Barbeque | 17 |
| 5.5.6 Barrier Point | 18 |
| 5.5.7 Barrier Continuous | 18 |
| 5.5.8 Bicycle Fitting | 18 |
| 5.5.9 Boating Facility..... | 19 |
| 5.5.10 Building | 20 |
| 5.5.11 Edging..... | 20 |
| 5.5.12 Electrical Conduit | 20 |
| 5.5.13 Electrical Fitting..... | 21 |
| 5.5.14 General Fixture | 21 |
| 5.5.15 Landscape Area..... | 22 |
| 5.5.16 Retaining Wall..... | 22 |

| | | |
|--------|------------------------------|----|
| 5.5.17 | Seat | 23 |
| 5.5.18 | Shelter..... | 24 |
| 5.5.19 | Sign..... | 24 |
| 5.5.20 | Table | 25 |
| 5.5.21 | Tree | 26 |
| 5.5.22 | Waste Collection Point | 27 |
| 5.6 | Stormwater | 27 |
| 5.6.1 | End Structure | 27 |
| 5.6.2 | Fitting | 28 |
| 5.6.3 | Flow Management Device | 29 |
| 5.6.4 | GPT Complex..... | 30 |
| 5.6.5 | GPT Simple..... | 31 |
| 5.6.6 | Non GPT Simple | 32 |
| 5.6.7 | Pipe..... | 32 |
| 5.6.8 | Pit..... | 34 |
| 5.6.9 | Surface Drain | 37 |
| 5.6.10 | WSUD Complex Area..... | 38 |
| 5.7 | Transport | 40 |
| 5.7.1 | Flush Point | 40 |
| 5.7.2 | Parking..... | 40 |
| 5.7.3 | Path Structure | 41 |
| 5.7.4 | Pathway / Cycleway | 42 |
| 5.7.5 | Pram Ramp..... | 44 |
| 5.7.6 | Pavement..... | 45 |
| 5.7.7 | Road Edge | 46 |
| 5.7.8 | Road Island..... | 47 |
| 5.7.9 | Road Pathway..... | 48 |
| 5.7.10 | Sub Soil Drain | 49 |
| 5.7.11 | Road Safety Barrier..... | 49 |
| 5.7.12 | Bridge Extent..... | 50 |
| 5.7.13 | Bridge Deck | 51 |
| 5.7.14 | Bridge Superstructure | 51 |
| 5.7.15 | Bridge Abutment | 51 |
| 5.7.16 | Bridge Pier | 52 |
| 5.7.17 | Containment Class..... | 52 |
| 5.8 | Water Supply | 52 |
| 5.8.1 | Pipe..... | 52 |
| 5.8.1 | Meter..... | 53 |
| 5.8.1 | Service Fitting | 53 |

| | |
|---|-----------|
| 5.8.1 Valve..... | 54 |
| 5.8.1 Storage Tank..... | 55 |
| 5.9 Sewerage | 55 |
| 5.9.1 Maintenance Hole..... | 55 |
| 5.9.2 Non Pressure Pipe..... | 56 |
| 5.9.3 Pressure Pipe | 57 |
| 5.9.4 Valve | 58 |
| Reference Document ADAC Asset Data Dictionary..... | 59 |

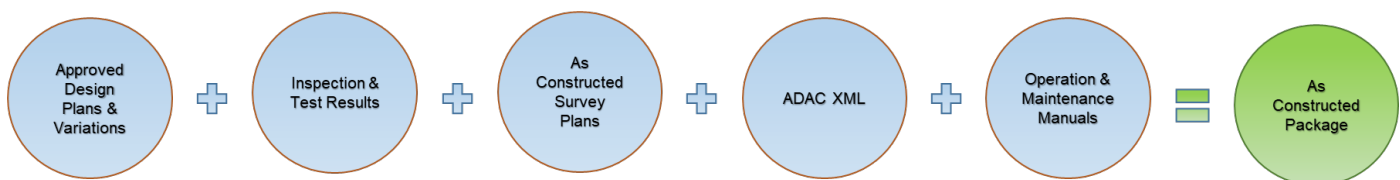
1. Purpose

The purpose of this document is to provide practical guidelines and general assistance with respect to the creation and provision of compliant **As Constructed As Designed (ADAC) EXtended Mark-up Language (XML)** files which are to be provided in the latest version and approved by Sunshine Coast Council. The current version ADAC XML files are to accompany any associated bundle of “As-Constructed” plans, drawings, schedules, and associated information reflecting newly constructed infrastructure and associated assets handed over to the Sunshine Coast Council.

On completion of physical works and prior to asset being accepted on maintenance, a current version ADAC XML file of the “As Constructed” and a full set of the “Design Drawings” with the “Marked Up” As Constructed information is to be submitted for Council review and acceptance. The final “As-Constructed” data should accurately reflect material types, specifications and other asset-specific information. The digital ADAC XML file must be a complete and detailed digital record of what was constructed, as this information is used by the Council in the management of the Assets.

2. Introduction to ADAC XML

ADAC XML files are an accompaniment to the “As-Constructed” bundle of information required by the Council as part of the final approval and handover of associated civil infrastructure and associated assets constructed.



Compliant ADAC XML files contain a structured and precise digital record of the assets described in the “As-Constructed” plans and other associated engineering documentation. Details include survey-accurate cadastral and boundary references, geometries and relative levels as well as detailed records of the new assets including accompanying attribute information.

ADAC XML files may also be used as a cross-check on accuracy and completeness of the “As-Constructed” information provided. The digital files afford a further confirmation of compliance with development approval conditions as well as helping to verify engineering specifications and other design-related requirements.

Depending on the tools (XML generator) being used to generate the ADAC XML, compliant files may be initially created during survey capture and then finalised in conjunction with the creation of the “As-Constructed” drawings. Alternatively, the XML files may be generated after the electronic “As-Constructed” drawings have been finalised. It is essential that the “As-Constructed” drawings are created using complete and accurate information to correctly identify the assets and the locations being represented in the ADAC XML file.

On receipt of the “As-Constructed” bundle of information, the Council will undertake data format and conformance checks on the ADAC XML file to confirm the completeness and validity of the details. Should significant anomalies, errors or missing information be identified during these checks, the ADAC XML file(s) may be returned to the provider for correction and resubmission in accordance with applicable conditions, potentially delaying the progress of the asset handover.

Once the ADAC XML file(s) are accepted by the Council, they are then uploaded to various internal systems and used to assist in the long-term management of the infrastructure. The detailed asset and location data is also available to external agencies in the future via various digital formats.

Please also note that some asset types are common to multiple asset classes (e.g. lighting fixtures designed and used for the purposes of either park or street lighting). In those cases, recording assets in a different asset class (Open Space vs Transport) is valid and appropriate when generating the ADAC XML file. This example would see streetlight fittings added to the ADAC XML file under the asset class of Open Space.

3. General Requirements

The ADAC XML file shall be produced using the most recent ADAC XML schema release (at the date of this document release Version 5.0.1) and should be “validated” for compliance before being submitted to Council. Details on the data schema (attributes and required status) describing the asset classes and sub-classes to be addressed by the ADAC capture process can be found throughout this document.

4. Datum Information

Data contained in the ADAC XML file(s) must reflect the survey details of the assets, exactly as found in the real world and as accurately reflected in the “As-Constructed” drawings. Unless otherwise specified, survey details must be derived from permanent survey marks (PSMs), with Map Grid of Australia (MGA Zone 56 – GDA2020) co-ordinates and AHD levels to be to fourth order standard as defined by ICSM Standard for the Australian Survey Control Network Special Publication 1 (SP1) Version 2.0 October 2013.

5. Asset Capture Guidelines

The following section is intended to provide guidance on the capture of assets within the ADAC XML in a manner which is acceptable to Sunshine Coast Council.

The physical nature of assets will determine where/if assets are captured separately within the ADAC XML file. For example, a pathway would be captured as individual and separate features to reflect any changes in physical properties, such as width or material type. Where possible, diagrams and images have been supplied in this document to assist in asset capture. The required attribution required by council is specified for each of the asset types below. The required element is the minimum data required however Council will accept the inclusion of Non required elements in the submission.

This guideline is structured in alignment with the ADAC asset group data structure. However, for the purpose of ADAC submission to Council, the asset group headings do not represent a location restriction. ie. Transportation pathway/cycle ways must be collected in road corridor and open space regardless of group heading.

5.1 Project Attribution

For ADAC XML files, the following attribution is included as header-level information within the schema.

| Attribute | Notes |
|----------------|--|
| ExportDateTime | Should be auto populated from the xml generating software. |
| Name | Should be populated with the Project Name for Capital Works or Development Name and Stage for Development Approvals. |
| Owner | This is not required to be provided at the project level, as it is a mandatory attribute for each feature. |
| Receiver | To be recorded as Sunshine Coast Council |

| | |
|----------------------------|--|
| WorksApprovalID | Developer contributed project; this will be Council's reference number. Sunshine Coast Council Capital works projects, this will be the project number. |
| DrawingNumber | Drawing Number from the corresponding "As Constructed" drawings. |
| HorizontalCoordinateSystem | Records the particulars of the horizontal coordinate systems for the project. Must be MGA56 . |
| HorizontalDatum | Records the particulars of the horizontal datum for the project. Must be GDA2020 . |
| VerticalDatum | Records the particulars of the vertical datum for the project. Must be AHD . |
| Surveyor | Containing information from the certifying Surveyor. |
| Engineer | Containing information from the certifying Engineer. |

5.2 Global Asset Attribution

Mandatory Attribution: The following attribution covered under the Global Types section of ADAC is required for all assets:

| Element Name | Attribute Description | Mandatory (Y/N) |
|---------------------|--|-----------------|
| Infrastructure Code | The code or number of an asset | Y |
| Owner | The entity that owns or is responsible for the asset. Used with the Department field to differentiate a sub-set of assets for an ADAC with multiple asset owners. | Y |
| DrawingNo | The drawing number of the as constructed plans | N |
| DrawingRevision | Date the drawing was revised. ISO 8601 is the accepted format. | N |
| ConstructionDate | The accepted date of construction for the whole project. Usually the project completion date. ISO 8601 is the accepted format. Date may be used to calculate remaining life in an asset management system. | Y |
| Department | Department is used to differentiate between assets with a common owner that need to go into separate GIS layers or asset registers | N |
| Surveyor | The name of the surveyor. | N |
| Engineer | The name of the consulting engineer | N |
| Status | The operational or existential status of the asset at the time the data was captured. A Project may contain a mix of planned and existing assets as well as operational and retired assets. | Y |
| DataQuality | Data Quality based on AS5488-2013. Classification of Subsurface Utility Information. | Y |
| Notes | Free text notes particular to this feature. | N |
| Supporting Files | Full path and filename of supporting information (e.g. drawing file, document file or image). It is recommended that the filename is relative to the URI of the ADAC XML document, E.g: ./images/image1.jpg | N |

The **Infrastructure Code** element is mandatory, as it will be used to as part of Council's data validation process to identify features which are non-compliant / incomplete. There is no naming/numbering

convention defined for the Infrastructure Code, except that all features within the file should be uniquely identified.

The **Owner** is a critical element within the XML, as defines the responsibility of the asset. Please note the descriptions for each owner below:

| Owner | Description |
|---------|--|
| Council | Asset Management is the responsibility of Council |
| Private | Asset Management is the responsibility of Property Owner, Gated Community or other private entity. |
| State | Asset Management is the responsibility of a State Government Department |

The **Status** is a critical element within the XML, as it is what the Council uses to load new and dispose existing assets into the asset register. Please note the descriptions for each status below:

| Status | Description |
|-------------------|--|
| Newly Constructed | Newly constructed asset described as constructed |
| Existing | Existing asset described as encountered |
| Designed | Future asset described as a design |
| Planned | Future asset prior to detailed design |
| Removed | Previously existing asset described as it was prior to removal |
| Retired | Pre-existing asset no longer in use but left in-situ. |
| Rehabilitated | Existing asset repaired, refitted or refurbished as part of works project. |

The **Construction Date** is a critical element within the XML, as this date is used to identify when the asset is complete and accepted by Council. This date should represent when the following key components are meet:

- Construction of all works are complete
- All necessary inspections and tests have been carried out and passed
- Essential documents and information have been provided and accepted by Council

The **Notes** element should be used to record any additional information regarding the asset, or to record attribute information which isn't available within the defined enumerations in the schema.

5.3 Cadastre Assets

5.3.1 Cadastral Connection

Asset Capture: Simple linear feature capturing the cadastral connections as deduced from observations and the survey reference mark(s).

Spatial Relationship: Must be coincident to the vertices that define the Cadastre Lot boundary features and relevant PSMs.

Mandatory Attribution: The following attribution is required for *Cadastral Connections*:

| Element Name | Attribute Description | Mandatory (Y/N) |
|--------------|---|-----------------|
| Bearing | The bearing in decimal degrees clockwise from North in the coordinate system of this project. | Y |
| Distance_m | The distance in metres on the coordinate system of this project. | Y |

5.3.2 Easement

Asset Capture: Multi-patched area feature representing a new or existing Easement.

Spatial Relationship: May share boundaries with WaterCourseReserve, LotParcels or RoadReserve. Node points between shared boundaries must be coincident i.e. no overlaps or “slivers”.

Mandatory Attribution: The following attribution is required for *Easements*:

| Element Name | Attribute Description | Mandatory (Y/N) |
|--------------|--|-----------------|
| LotNo | The lot number as described on the originating survey plan | Y |
| PlanNo | The plan number of the originating survey plan. | Y |

5.3.3 Lot Parcels

Asset Capture: Multi-patched area feature representing the boundary of a titled or proposed Cadastral Lot.

Spatial Relationship: May share boundaries with RoadReserves, WaterCourses or Easements. Node points between shared boundaries must be coincident i.e. no overlaps or “slivers”.

Mandatory Attribution: The following attribution is required for *Lot Parcels*:

| Element Name | Attribute Description | Mandatory (Y/N) |
|------------------|--|-----------------|
| LotNo | The lot number as described on the originating survey plan. | Y |
| PlanNo | The plan number of the originating survey plan. | Y |
| CancelledLotPlan | The lot on plan cancelled by this boundary if applicable. | N |
| TitledArea_sqm | The area in square metres enclosed by the boundary, as described by the survey plan. | Y |

5.3.4 Road Reserve

- Asset Capture:** Multi-patched area feature representing a gazetted or soon to be gazetted Road reserve boundary.
- Spatial Relationship:** May share boundaries with WaterCourseReserve, LotParcels, other RoadReserve or Easements. Node points between shared boundaries must be coincident i.e. no overlaps or “slivers”.
- Mandatory Attribution:** The following attribution is required for *Road Reserves*:

| Element Name | Attribute Description | Mandatory (Y/N) |
|--------------|---|-----------------|
| Name | The name of the road reserve represented by this boundary | Y |

5.3.5 Survey Mark

- Asset Capture:** Simple point feature representing a Permanent Survey Mark.
- Spatial Relationship:** May be used in a Cadastral Connection (as in lot parcels, noted above).
- Mandatory Attribution:** The following attribution is required for *Survey Marks*:

| Element Name | Attribute Description | Mandatory (Y/N) |
|--------------|--|-----------------|
| MarkName | The name by which the survey mark may be uniquely identified from control records. | Y |

5.3.6 Water Course Reserve

- Asset Capture:** Multi-patched area feature representing the boundary of a Water Course reserve.
- Spatial Relationship:** May share boundaries with RoadReserves, LotParcels or Easements. Node points between shared boundaries must be coincident i.e. no overlaps or “slivers”.
- Mandatory Attribution:** The following attribution is required for *Water Course Reserves*:

| Element Name | Attribute Description | Mandatory (Y/N) |
|--------------|--|-----------------|
| Name | The name of the watercourse reserve represented by this boundary | Y |

5.3.7 Chainage Lines

Not required to be captured

5.4 Surface

5.4.1 Contour/Spot Height

- Asset Capture:** Contour is a linear feature capturing a single contour feature. Spot Height is a simple point feature representing a single elevation point.
- Spatial Relationship:** Not applicable
- Non Mandatory Attribution:** The following attribution is requested, but not mandatory, for *Contour/SpotHeights*:

| Element Name | Mandatory (Y/N) |
|--------------|-----------------|
| Status | N |
| Elevation_m | N |

5.4.2 Breaklines

Not required to be captured

5.4.3 Profile Lines

Not required to be captured

5.5 Open Space Assets

5.5.1 Open Space Area

General Information: Open Space areas include Parks or Bushlands.

Asset Capture: Multi-patched area feature representing the complete “footprint” of the Open Space area and enclosing relevant Open Space assets. For example, parks will often align with the cadastral *Lot Parcels*, in which case the lot boundaries can be used to represent the Open Space feature. Please refer to the dashed red line in the example shown in Figure 1.

Spatial Relationship: Not applicable

Mandatory Attribution: The following attribution is required for *Open Space Areas*:

| Element Name | Attribute Description | Mandatory (Y/N) |
|--------------|--|-----------------|
| Name | The official name or description of the Open Space area (e.g.: Smith St Park, Stockland Park Sporting complex) | Y |
| Type | The type of Open Space area eg: Recreational, Bushland, Sporting Complex | Y |

Positional Accuracy: The minimum accepted horizontal accuracy for *Open Space Areas* is $\pm 50\text{mm}$.



Figure 1

5.5.2 Activity Area

| | |
|-------------------------------|--|
| <u>General Information:</u> | Examples include: Sports Fields, Courts, Playgrounds and Dog off Leash Areas. |
| <u>Asset Capture:</u> | Multi-patched area feature representing different activity areas. For playgrounds, this will often align with the soft fall boundaries. For animal agility areas, this will often align with the fencing surrounding the area. For sports fields and courts, this will often align with the marked boundaries of the area, or the edge of the material. Please refer to the dashed yellow line in the example shown below in Figure 1 Representing activity areas for dedicated purposes. |
| <u>Spatial Relationship:</u> | Feature must be totally within the Parent Open Space Activity Area feature. |
| <u>Mandatory Attribution:</u> | The following attribution is required for <i>Activity Areas</i> : |

| Element Name | Attribute Description | Mandatory (Y/N) |
|--------------|--|-----------------|
| Use | The type of use for the Activity Site eg: Animal, Fitness, Play, Sport | Y |
| Type | The type of Activity Site. Eg: Sports Field, Cycling Facility | Y |
| Material | The material type of Undersurfacing eg: Bark, Rubber, Grassed | Y |
| Thickness_mm | Thickness of material in millimetres. | Y |

| | |
|-----------------------------|---|
| <u>Positional Accuracy:</u> | The minimum accepted horizontal accuracy for <i>Activity Areas</i> is ± 50mm . |
|-----------------------------|---|

5.5.3 Activity Point

| | |
|-------------------------------|---|
| <u>General Information:</u> | Includes individual pieces of playground, fitness or sports equipment. |
| <u>Asset Capture:</u> | Simple point feature representing individual activity assets that typically fall within an Activity Area. Playground modules should be represented as a single feature, located by its approximate centre point. Dimensions of asset are to be represented in the Notes area. Please refer to the yellow dots in the example shown in Figure 1. |
| <u>Spatial Relationship:</u> | Should typically fall within a defined Activity Area feature. |
| <u>Mandatory Attribution:</u> | The following attribution is required for <i>Activity Points</i> : |

| Element Name | Attribute Description | Mandatory (Y/N) |
|--------------|---|-----------------|
| Use | The activity use category | Y |
| Type | The activity item type | Y |
| Material | The material type of Activity Item eg: Timber, Aluminium | Y |
| Theme | The theme of the Activity item. Eg: Kangaroo, Boat, Fort, Car | Y |
| Units | The number of units present eg: 1, 2, 3 | N |
| Manufacturer | The Manufacturer of the unit | Y |
| ModelNumber | The standard code, model number or part number for the unit | Y |

| | |
|-----------------------------|--|
| <u>Positional Accuracy:</u> | The minimum accepted horizontal accuracy for <i>Activity Points</i> is ± 1m . |
|-----------------------------|--|

5.5.4 Artwork

General Information: Includes Entry Statements, Memorials, Monuments, Plaques, and Sculptures & Statues.

Asset Capture: Simple point feature representing the centre of an asset. Please capture any dimensions into the 'Notes' field.

Given the unique design of artwork, photos should be included in the as-constructed package.

Spatial Relationship: Not applicable.

Mandatory Attribution: The following attribution is required for *Artwork*:

| Element Name | Attribute Description | Mandatory (Y/N) |
|--------------|--|-----------------|
| Type | The type of Artwork eg: Sculpture, Statue | Y |
| Material | The material type of Artwork eg: Timber, Aluminium | Y |

Positional Accuracy: The minimum accepted horizontal accuracy for *Artwork* is $\pm 1\text{m}$.

5.5.5 Barbeque

General Information: None.

Asset Capture: Simple point feature representing the centre of the barbeque. Any hot water units, taps, lighting or shelters associated with the barbeque should be captured as separate features. The slab the barbeque is installed on is considered part of the asset and does not need to be separately captured.



Spatial Relationship: Not applicable.

Mandatory Attribution: The following attribution is required for *Barbeques*:

| Element Name | Attribute Description | Mandatory (Y/N) |
|---------------------|---|-----------------|
| EnergySource | The Source of energy for the BBQ. ie: Mains, Bottled, Solar | Y |
| Plates | The number of plates fitted in the BBQ structure. | Y |
| SurroundingMaterial | The material type of the surround structure ie: brick, steel and Timber | Y |
| TopMaterial | The material type of the top structure ie: Tiled, marble, steel | Y |
| Manufacturer | The Manufacturer of the unit | Y |
| ModelNumber | The standard code, model number or part number for the unit | N |

Positional Accuracy: The minimum accepted horizontal accuracy for *Barbeques* is $\pm 1\text{m}$.

5.5.6 Barrier Point

Refer to Barrier Continuous

5.5.7 Barrier Continuous

General Information: Includes fences, walls, bollards, bollard runs, guardrails, pedestrian fall protection (rail) and gates.

Asset Capture: Complex linear feature (polylines including curves but not bézier curves) representing a barrier type asset. Please refer to the dashed yellow line in the example shown below in Figure 2

A Bollard run is defined as 3 or more bollards, of the same type/material and equal spacing.

If less than 3 bollards, each bollard should be captured as a line of 0.1 metre in length.

When capturing gates, please specify the gate configuration in the **Notes** field.

Gate configurations include:

- Single, Double, Boom Gate, Sliding / Roller etc.

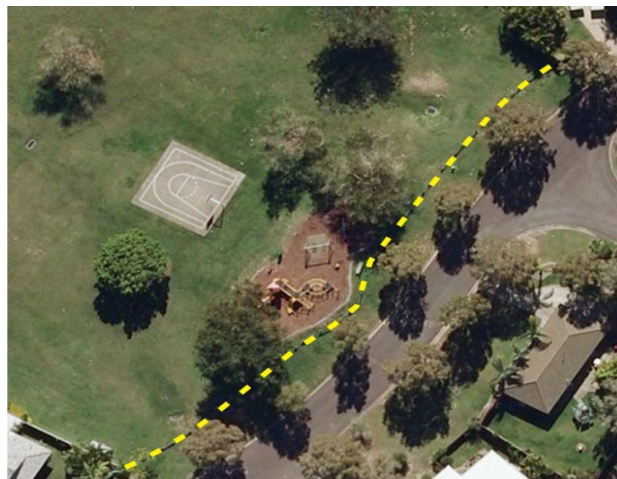


Figure 2

Spatial Relationship: None.

Mandatory Attribution: The following attribution is required for *Barrier Continuous*:

| Element Name | Attribute Description | Mandatory (Y/N) |
|-----------------|---|-----------------|
| Type | The type of Barrier eg: General Fencing, Bollard Run, Gate | Y |
| UprightMaterial | The material type of Barrier Uprights eg: Timber, Steel | Y |
| LinkMaterial | The material type of Barrier Link Material eg: None, Chain, Wire | Y |
| TopMaterial | The material type of Barrier Topping Material eg: None, Timber Rail, Barbed Wire | Y |
| Length_m | The lineal length of the barrier in metres | Y |
| Height_m | The height of the barrier in metres | Y |
| UprightNumber | Total number of uprights in the run. For fencing, this will be the number of posts. For a bollard run, it will be the number of bollards. | Y |

Positional Accuracy: The minimum accepted horizontal accuracy for *Barrier Continuous* is $\pm 0.5\text{m}$.

5.5.8 Bicycle Fitting

General Information: None.

Asset Capture:

Simple point feature representing the centre of a bicycle fitting. Any slab the bicycle fitting is installed on is considered part of the asset and does not need to be captured separately. When capturing a group of Bicycle Hopps, a single point at the centre of the group is to be captured and the quantity records in the notes.



Bicycle Hoop



Bicycle Chicane

Spatial Relationship: Not applicable.

Mandatory Attribution: The following attribution is required for *Bicycle Fittings*:

| Element Name | Attribute Description | Mandatory (Y/N) |
|--------------|---|-----------------|
| Type | The type of Bicycle fitting eg: Bicycle Hoop, Bannana Rail | Y |
| Material | The material type of Bicycle fitting eg: Stainless Steel, Aluminium | Y |
| Manufacturer | The Manufacturer of the unit | N |
| ModelNumber | The standard code, model number or part number for the unit | N |

Positional Accuracy: The minimum accepted horizontal accuracy for *Bicycle Fitting* is $\pm 1\text{m}$.

5.5.9 Boating Facility

General Information: None.

Asset Capture: Area feature representing an individual boating facility such as ramp, pontoon or jetty.

Spatial Relationship: Not applicable.

Mandatory Attribution: The following attribution is required for *Boating Facilities*:

| Element Name | Attribute Description | Mandatory (Y/N) |
|--------------|---|-----------------|
| Type | The type of Boating Facility eg: Jetty, Pier | Y |
| Material | The material type of Boating Facility eg: Timber, Aluminium | Y |

Positional Accuracy: The minimum accepted horizontal accuracy for *Boating Facilities* is $\pm 1\text{m}$.

5.5.10 Building

General Information: None.

Asset Capture: Area feature (closed polygon) representing the Building footprint for a structure other than a shelter.

Spatial Relationship: Not applicable.

Mandatory Attribution: The following attribution is required for *Buildings*:

| Element Name | Attribute Description | Mandatory (Y/N) |
|--------------|---|-----------------|
| Type | The type of Building eg: Toilet Block, Shed | Y |
| Material | The material type of Building eg: Timber, Brick | Y |

Positional Accuracy: The minimum accepted horizontal accuracy for *Buildings* is **± 0.5m**.

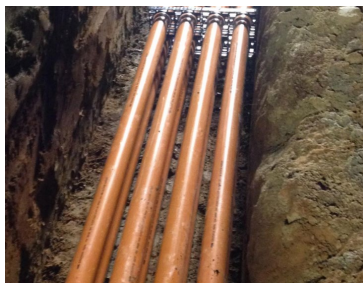
5.5.11 Edging

Not required to be captured.

5.5.12 Electrical Conduit

General Information: None.

Asset Capture: Complex linear feature (polylines including curves but not bézier curves) representing a conduit run.



Spatial Relationship: Conduit shown as a polyline starting and finishing at coincident points with each associated fitting.

Mandatory Attribution: The following attribution is required for *Electrical Conduits*:

| Element Name | Attribute Description | Mandatory (Y/N) |
|--------------|---|-----------------|
| Type | The conduit type eg: Medium Duty, Heavy Duty | Y |
| Material | The conduit material type | Y |
| Diameter_mm | The conduit diameter | Y |
| Length_m | The lineal length of the conduit in metres | Y |
| Protection | The type of conduit protection used eg: Concrete encased, rubber mat, tape only | N |

Positional Accuracy: The minimum accepted horizontal accuracy for *Electrical Conduits* is **± 50mm**.

5.5.13 Electrical Fitting

- General Information:** Includes Lights, Pits, Poles, Power Outlets and Switchboards.
- Asset Capture:** Simple point feature representing the centre point of the asset. The Council requires all **Rate 3** lighting installed to be included in the XML. For lights affixed to a pole, a separate Pole feature must also be captured. Bollard lighting does not require a separate Pole feature to be captured.
- Spatial Relationship:** Must be coincident to Electrical Conduit polylines. Lights with poles will have coincidence geometry.
- Mandatory Attribution:** The following attribution is required for *Electrical Fittings*:

| Element Name | Attribute Description | Mandatory (Y/N) |
|--------------|--|-----------------|
| Type | The type of Electrical Component eg: Light, Switch Board, Power Outlet | Y |
| Base | The type of base (eg: Fixed or Slip) | Y |
| Material | The material type of the component eg: Aluminium, Steel | Y |
| EnergySource | The type of Power Source eg; Mains, Solar | Y |
| Manufacturer | The Manufacturer of the unit | N |
| ModelNumber | The standard code, model number or part number for the unit | N |

Positional Accuracy: The minimum accepted horizontal accuracy for *Electrical Fittings* is **± 50mm**.

5.5.14 General Fixture

- General Information:** Includes Dog Bag Dispensers, Fish Cleaning Stations, Goal Posts, Planter Boxes, Flag Poles, Scoreboards and Landscape Features (see figure 3).
- Asset Capture:** Simple point feature representing the centre of an asset. Dog bag dispensers including a pole do not require the pole to be separately captured. Fish Cleaning Stations include any lighting, taps and slabs associated with it and these do not need to be captured separately. Refer to Service Fittings (5.7.3) to capture Dog Bowls.



Figure 3: Landscape Features (most common material = sandstone)

- Spatial Relationship:** Not applicable.
- Mandatory Attribution:** The following attribution is required for *Fixtures*:

| Element Name | Attribute Description | Mandatory (Y/N) |
|--------------|---|-----------------|
| Type | The type of Fixture eg: Dog bag dispensers, Fish cleaning station | Y |
| Material | The material type of Fixture eg: Steel Powder Coated, Aluminium | Y |
| Manufacturer | The Manufacturer of the unit | N |
| ModelNumber | The standard code, model number or part number for the unit | N |

Positional Accuracy: The minimum accepted horizontal accuracy for *Fixtures* is **± 1m**.

5.5.15 Landscape Area

General Information: None.

Asset Capture: Multi-patched area feature representing the “footprint” of a landscaped area. Individual areas are required where the type of Landscaping changes (e.g. garden beds, grass). Only Gardens (eg. cluster of plants), Grass and Synthetic Grass are required to be included in the XML. The grassed area of the Road Reserve is not to be captured. The grassed area is considered to be part of the road verge.

To further understand the capture of these assets for SCC, the following type definitions are provided:

‘Amenity Planting’ = ADAC Type ‘Garden’

‘Rehabilitation’ = ADAC Type ‘Revegetation’

‘Lawn’ = ADAC Type ‘Grass’

Spatial Relationship: Not applicable.

Mandatory Attribution: The following attribution is required for *Landscape Areas*:

| Element Name | Attribute Description | Mandatory (Y/N) |
|--------------|---|-----------------|
| Type | The type of Garden/L'scape Area eg: Garden, Grass, Rem Vegetation | Y |
| RootBarrier | Is there a Root Barrier? Yes or No | Y |
| Irrigated | Is Landscaped Area irrigated? Yes or No | Y |

Positional Accuracy: The minimum accepted horizontal accuracy for *Landscape Areas* is **± 0.5m**.

5.5.16 Retaining Wall

General Information: None.

Asset Capture: Complex linear feature (polylines including curves but not bézier curves) representing a retaining wall. While recognised as a three-dimensional object, the retaining wall is typically captured as a linear course where the wall intersects the ground. Figure shows the capture location of a new retaining wall (red dash dot). Where the retaining wall gradually changes height over its length, the height is to be averaged over the length of the wall. Changes in retaining wall material must be represented as separate features. If the wall is a scour wall, please specify ‘Scour wall’ in the ‘Notes’ section.



Figure 4

Spatial Relationship: Not applicable.

Mandatory Attribution: The following attribution is required for *Retaining Walls*:

| Element Name | Attribute Description | Mandatory (Y/N) |
|--------------|---|-----------------|
| Use | Context of use for this wall. i.e Terrestrial or Marine | Y |
| Material | The material/type of Retaining Wall eg: Rock, Conc. Block, Conc. Crib | Y |
| Construction | Construction principle of this wall (eg: Gravity, Piled, Cantilever) | Y |
| Length_m | The lineal length of the wall in metres | Y |
| Height_m | The height (or average height) of the wall in metres | Y |

Positional Accuracy: The minimum accepted horizontal accuracy for *Retaining Walls* is **± 0.5m**.

5.5.17 Seat

General Information: None.

Asset Capture: Simple point feature representing the centre of a seat. Seating associated with a table are not to be captured separately. Any slab the seat is installed on is considered part of the asset and does not need to be captured separately.



Seat



Bench



Platform Seat

Spatial Relationship: Not applicable.

Mandatory Attribution: The following attribution is required for *Seats*:

| Element Name | Attribute Description | Mandatory (Y/N) |
|--------------|--|-----------------|
| SeatType | The configuration of the seating. Eg. Freestanding, Border | Y |
| Places | The number of individuals the seating is designed for. This attribute may be used to help determine the capacity of a recreational facility. | Y |
| Material | The material type of Table/Seat eg: Timber, Aluminium | Y |
| Manufacturer | The Manufacturer of the unit | N |
| ModelNumber | The standard code, model number or part number for the unit | N |

Positional Accuracy: The minimum accepted horizontal accuracy for *Seats* is **± 1m**.

5.5.18 Shelter

General Information: None.

Asset Capture: Area feature (closed polygon) representing the shelter footprint. Any lighting, tables, seats or barbeques located underneath the shelter are to be captured as separate assets. Shade sails which share a common pole should be treated as the one feature. Poles associated with shade sails / shelters do not need to be captured separately. Any slab the shelter is installed on is considered part of the asset and does not need to be captured separately.

NOTE: The ADAC Schema allows for an identical point feature capture for Shelters however that is not accepted by SCC.

Given the unique design of many shelters, photos should be included in the as-constructed package.



Gable Pitched Shelter



Skillion Shelter



Shade Sails

Spatial Relationship: Not applicable.

Mandatory Attribution: The following attribution is required for *Shelters*:

| Element Name | Attribute Description | Mandatory (Y/N) |
|------------------|--|-----------------|
| Type | The type of structure eg: Sail, Rigid | Y |
| ConstructionType | The type of shelter constructed eg: Prefab or Built insitu | Y |
| FloorMaterial | The material type of the Floor eg: Concrete, Timber | Y |
| WallMaterial | The material type of the Walls eg: Timber/cladding, Reinforced Block | Y |
| RoofMaterial | The material type of the Roof eg: Steel Sheeting, Masonary tiles | Y |
| Manufacturer | The Manufacturer of the unit | N |
| ModelNumber | The standard code, model number or part number for the unit | N |

Positional Accuracy: The minimum accepted horizontal accuracy for *Shelters* is $\pm 0.5m$.

5.5.19 Sign

General Information: None.

Asset Capture: Simple point feature representing the centre of a sign. All signs (regardless of location eg. in park or road corridor) are required to be captured. Poles associated with the sign do not need to be separately captured. (In the instance of a sign having no text, please record "NOT APPLICABLE")

Spatial Relationship: Not applicable.

Mandatory Attribution: The following attribution is required for *Signs*:

| Element Name | Attribute Description | Mandatory (Y/N) |
|--------------|-----------------------|-----------------|
|--------------|-----------------------|-----------------|

| | | |
|--------------|--|---|
| Type | The type of Sign eg: Regulatory, Naming, Information The purpose of a sign. Applied to individual sign blades as blades may have different purposes in a compound sign. | Y |
| Material | The material type of sign eg: Timber, Steel/Aluminium, Carved stone | Y |
| Structure | The type of structure this sign blade is fixed to. | Y |
| SignText | Sign Text | Y |
| Rotation | Rotation angle (cartesian - anti-clockwise 0 degrees = East) May be used to denote direction of facing. | N |
| Manufacturer | The Manufacturer of the unit | N |
| ModelNumber | The standard code, model number or part number for the unit | N |

Positional Accuracy: The minimum accepted horizontal accuracy for *Signs* is **± 1m**.

5.5.20 Table

General Information: None.

Asset Capture: Simple point feature representing the centre of a table. Tables with associated seating do not require the seating to be captured separately. Any slab the table and/or associated seat are installed on, should be considered part of the asset and does not need to be captured separately.



Spatial Relationship: Not applicable.

Mandatory Attribution: The following attribution is required for *Tables*:

| Element Name | Attribute Description | Mandatory (Y/N) |
|--------------|--|-----------------|
| Type | The type of Unit eg: Table, Bench or Counter etc. | Y |
| SeatType | Seating details. Element should be nil if no seating is present. | Y |
| Places | The number of individuals the seating is designed for. This attribute may be used to help determine the capacity of a recreational facility. | Y |
| Material | The material type of Table/Seat eg: Timber, Aluminium | Y |
| Manufacturer | The Manufacturer of the unit | N |
| ModelNumber | The standard code, model number or part number for the unit | N |

Positional Accuracy: The minimum accepted horizontal accuracy for *Tables* is **± 1m**.

5.5.21 Tree

General Information: When capturing trees please refer to Sunshine Coast Council's Landscape Infrastructure Manual – Palettes – Planting – Planting Index for genus and species naming.

Where tree planting has a mulched area with timber edge it is considered a part of the tree planting and therefore not a separate asset (Refer figure 5)

Asset Capture: Simple point feature representing the centre of an asset. All trees (regardless of location eg. in park or road corridor) are required to be captured.

Spatial Relationship: Not applicable.

Mandatory Attribution: The following attribution is required for *Trees*: Please note botanical name is recorded in the genus field only, starting with a capital letter, eg: Grevillea. The species is to be recorded in the species field only, starting with a lower-case letter eg: victoriae.

| Element Name | Attribute Description | Mandatory (Y/N) |
|---------------------------------|-------------------------------------|-----------------|
| Genus – (eg) <i>Grevillea</i> | The Tree Genus | Y |
| Species – (eg) <i>victoriae</i> | The Tree Species | Y |
| RootBarrier | Does Root Barrier exist - Yes or No | Y |
| Grate | Does Tree Grate exist - Yes or No | N |

Positional Accuracy: The minimum accepted horizontal accuracy for *Trees* is $\pm 1\text{m}$.



Figure 5

5.5.22 Waste Collection Point

General Information: Includes any poles, stands or enclosures associated with a bin.

Asset Capture: Simple point feature representing the centre of the asset. Each bin or enclosure type is to be captured as separate assets



Wheelie bins attached to security post



Wheel bin enclosures

Spatial Relationship: Not applicable.

Mandatory Attribution: The following attribution is required for *Waste Collection Points*:

| Element Name | Attribute Description | Mandatory (Y/N) |
|--------------|--|-----------------|
| Type | The type of Bin/Waste collection point eg: Std Litter Bin, Wheelie Bin Enclosure | Y |
| Material | The material type of Bin/Waste collection point eg: Aluminium, Steel | Y |
| Manufacturer | The Manufacturer of the unit | N |
| ModelNumber | The standard code, model number or part number for the unit | N |

Positional Accuracy: The minimum accepted horizontal accuracy for *Waste Collection Points* is $\pm 1\text{m}$.

5.6 Stormwater

5.6.1 End Structure

General Information: Represents a stormwater headwall / end wall.

Asset Capture: Complex linear feature (polylines including curves but not bézier curves) representing a representing the face of the headwall (refer Figure 6). Fences surrounding the end structure should be captured separately as *Barrier Continuous*.

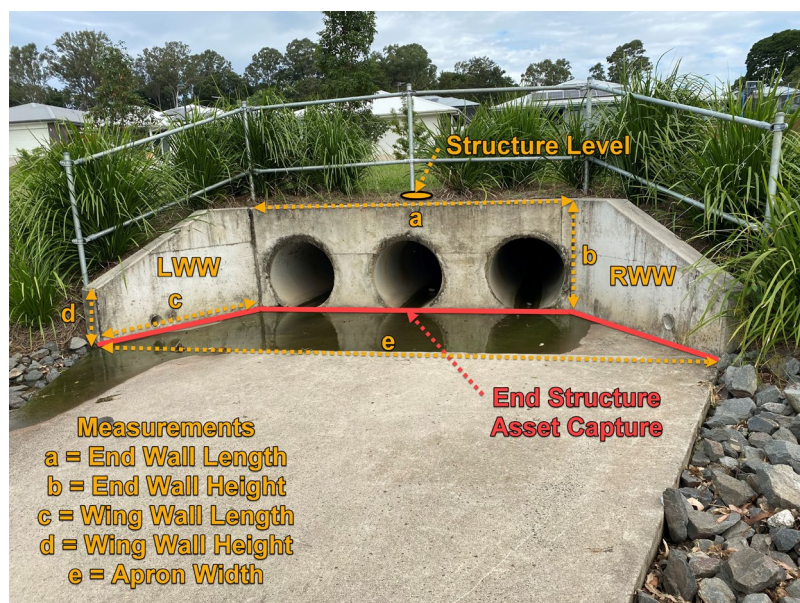


Figure 6

Spatial Relationship: Should be coincident to the end of a stormwater pipe/culvert

Mandatory Attribution: The following attribution is required for *End Structures* where the element type is applicable:

| Element Name | Attribute Description | Mandatory (Y/N) |
|---------------------|---|---------------------|
| StructureID | The identifier for this end structure. Usually, the textual identifier it would be labelled with on the face of a plan. | Y |
| StructureLevel_m | The surface level of the structure in metres against the vertical datum for the project. | Y |
| EndWallType | The type of stormwater end wall structure eg. Pipe Endwall, Box Endwall, Multi Cell Pipe Endwall etc | Y |
| EndWallSize | Define the number of cells and sizes penetrating the End Structure ie. 3/750 or 2/1200x900 or 2/900x600+1/600. | Y |
| EndWallLength_m | Represents the length in metres of the end wall. | Y |
| EndWallHeight_m | Represents the height in metres of the end wall. | Y |
| EndWallThickness_m | Represents the Thickness in metres of the end wall. | N |
| EndWallMaterial | The predominant construction material of the end wall structure. | Y |
| EndWallConstruction | The method of construction of the end wall structure. | Y |
| LWW_Length_m | Represents the length in metres of the left wing wall. | Y |
| LWW_Height_m | Represents the height in metres of the left wing wall. | Y |
| LWW_Thickness_m | Represents the thickness in metres of the left wing wall. | N |
| LWW_Material | The predominant construction material of the left wing wall. | Y |
| LWW_Construction | The method of construction of the left wing wall. | Y |
| RWW_Length_m | Represents the length in metres of the right wing wall. | Y |
| RWW_Height_m | Represents the height in metres of the right wing wall. | Y |
| RWW_Thickness_m | Represents the thickness in metres of the right wing wall. | N |
| RWW_Material | The predominant construction material of the right wing wall. | Y |
| RWW_Construction | The method of construction of the right wing wall. | Y |
| Apron_Width_m | Represents the width in metres of apron on the End Structure. | Y |
| Apron_Thickness_m | Represents the thickness in metres of apron on the End Structure. | N |
| Apron_Area_m2 | Represents the area in square metres of apron on the End Structure. | Y |
| Apron_Material | The predominant construction material of apron on the End Structure. | Y |
| Apron_Construction | The method of construction of apron on the End Structure. | Y |
| GrateType | Type of grate used, if applicable. | Y (if Grate exists) |
| TideGate | Type of tide or flood gate used, if applicable. | Y (if Grate exists) |

Positional Accuracy: The minimum accepted horizontal accuracy for *End Structures* is **± 50mm**.

5.6.2 Fitting

General Information: Represents a stormwater end cap.

Asset Capture: Single point feature representing the centre point of the fitting.

Spatial Relationship: Must be coincident to the end point a Stormwater pipe feature.

Mandatory Attribution: The following attribution is required for *Fittings*:

| Element Name | Attribute Description | Mandatory (Y/N) |
|--------------|---|-----------------|
| FittingType | The type of stormwater fitting. Eg EWnd Cap, Tide Gate, Frog Flap, Duckbill Valve | Y |
| Rotation | Rotation angle (cartesian - anti-clockwise 0 degrees = East) | N |

Positional Accuracy: The minimum accepted horizontal accuracy for *Fittings* is **± 50mm**.

5.6.3 Flow Management Device

General Information: Represents a Flow Management Device; Levee, Spillway or Weir.

Asset Capture: Complex linear feature (polylines including curves but not Bezier curves). If the Weir includes a 'Lock' structure as well please specify in 'Notes' section.

| Element Name | Attribute Description | Mandatory (Y/N) |
|------------------|--|-----------------|
| Sqid_Id | The string identifier of the device, as it would appear on a plan. | Y |
| Type | Stormwater Flow Management Device Type | Y |
| Material | The predominant material of the Stormwater Flow Management Device. | Y |
| Length_m | Length in metres | Y |
| CrestElevation_m | Crest level in AHD meters | Y |

Positional Accuracy: The minimum accepted horizontal accuracy for *flow management device* is **± 50mm**.

5.6.4 GPT Complex

General Information: None.

Asset Capture: Single point feature located at the centre of chamber on the top surface. Capturing centre of lid is appropriate only when the lid is centred over the chamber.

Gross Pollutant Trap (GPT) Complex assets are Commercial or Custom built devices (e.g. Humes Interceptor).

Spatial Relationship: GPT Complex assets must be coincident to pipe features as per Pits/Manhole features.

Mandatory Attribution: The following attribution is required for *GPT Complexes*:

| Element Name | Attribute Description | Mandatory (Y/N) |
|-------------------------|---|--------------------|
| Sqid_Id | The string identifier of the device, as it would appear on a plan. | N |
| Manufacturer | The manufacturer if applicable | Y |
| ModelNumber | The model if applicable | Y |
| Length_mm | Length in millimetres | Y (if rectangular) |
| Width_mm | Width in millimetres | Y (if rectangular) |
| Diameter_mm | Diameter in millimetres | Y (if circular) |
| Function1 | The first function of the WSUD point. The device must have at least one function. Usually, Gross Pollutant Capture will be the most important function. | Y |
| Function2 | The second function of the WSUD point, if applicable | N |
| Function3 | The third function of the device, if applicable | N |
| US_PipeDiameter_mm | The upstream pipe diameter in millimetres | N |
| DS_PipeDiameter_mm | The downstream pipe diameter in millimetres | N |
| SurfaceLevel_m | The surface level at the top of the device | Y |
| CleanoutLevel_m | The level to which the device must be cleaned out, in metres against the vertical datum of the project. | Y |
| Depth_m | The depth, in metres, of the device. | Y |
| SumpDepth_m | The depth, in metres, of the sump, if applicable | N |
| HasFilterMedia | True if the device has filtration media or a filter capsule installed. | N |
| HasBasket | True if the device has a litter basket installed. | N |
| HasBoards | True if the device has drop-boards or penstock installed. | N |
| DesignFlow_m3s | Design Flow in cubic metres per second | N |
| MaxContaminantVolume_m3 | Maximum contaminant retention volume in cubic metres. | N |
| MaxInternalVolume_m3 | Maximum internal volume in cubic metres. | N |
| MaintenanceCycle_mnths | The minimum maintenance cycle in months (refer to specifications) | N |
| Rotation | The minimum maintenance cycle in months (refer to specifications) | N |

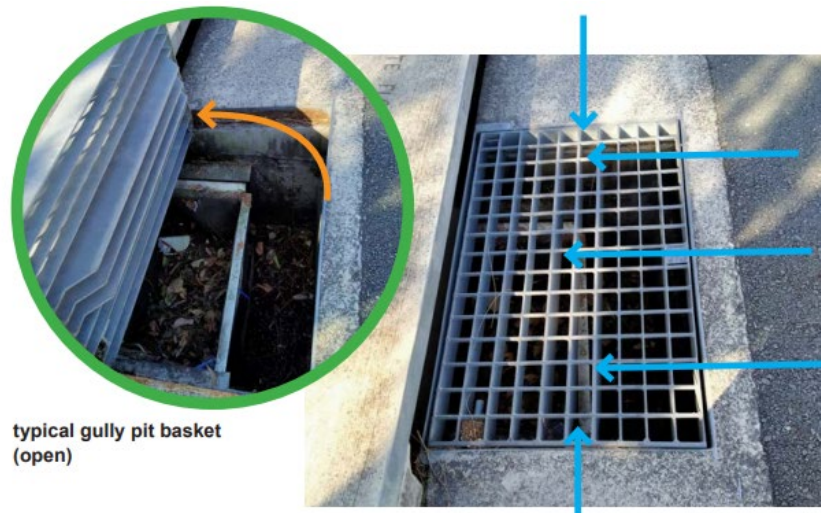
Positional Accuracy: The minimum accepted horizontal accuracy for *GPT Complexes* is **± 50mm**.

5.6.5 GPT Simple

General Information: None.

Asset Capture: Single point feature located at the centre of chamber on the top surface. Capturing centre of lid is appropriate only when the lid is centred over the chamber.

Gross Pollutant Trap (GPT) Simple assets are “in pit” basket or “end of line” devices.



Spatial Relationship: A GPT Simple asset's spatial location must correlate with a Pit/Manhole asset as they are housed within those structures and can be removed for maintenance or relocation.

Mandatory Attribution: The following attribution is required for *GPT Simple*:

| Element Name | Attribute Description | Mandatory (Y/N) |
|------------------------|--|-----------------|
| Sqid_Id | The string identifier of the device, as it would appear on a plan. | N |
| Construction | The construction method, Prefabricated, Insitu | Y |
| Manufacturer | The manufacturer if applicable | N |
| ModelNumber | The model if applicable | N |
| TreatmentMeasure | Simple treatment measures fitted to existing infrastructure to intercept solid litter being transported in stormwater. | Y |
| Function1 | The first function of the WSUD point. Has a fixed value because all GPTSimple points are. | Y |
| Length_mm | The length of the device | Y |
| Width_mm | The width of the device | Y |
| Material | Predominant material of device | Y |
| MaintenanceCycle_mnths | The minimum maintenance cycle in months. This is the revisit interval for clearing captured rubbish. | N |
| Rotation | Rotation angle (cartesian - anti-clockwise 0 degrees = East) | N |

Positional Accuracy: The minimum accepted horizontal accuracy for *GPT Simple* is **± 50mm**.

5.6.6 Non GPT Simple

General Information: None.

Asset Capture: Single point feature located at the centre of chamber on the top surface. Capturing centre of lid is appropriate only when the lid is centred over the chamber.

Non GPT Simple assets represent basic and minor sand filtration storage.

Spatial Relationship: Non GPT Simple assets must be coincident to pipe features as per Pits/Manhole features.

Mandatory Attribution: The following attribution is required for *Non GPT Simple*:

| Element Name | Attribute Description | Mandatory (Y/N) |
|------------------------|---|-----------------|
| Sqid_Id | The string identifier of the device, as it would appear on a plan. | N |
| Construction | The construction method, Prefabricated, Insitu | Y |
| Manufacturer | The manufacturer if applicable | N |
| ModelNumber | The model if applicable | N |
| TreatmentMeasure | Treatment measures applicable to WSUD points that are neither simple nor complex Gross Pollutant Traps | Y |
| Function1 | The first function of the WSUD point. Must be supplied. | Y |
| Function2 | The second function of the WSUD point, if applicable | N |
| Function3 | The third function of the device, if applicable | N |
| Length_mm | The length of the device | Y |
| Width_mm | The width of the device | Y |
| MaintenanceCycle_mnths | The minimum maintenance cycle in months. This is the revisit interval for maintenance or inspection, if applicable. | N |
| Rotation | Rotation angle (cartesian - anti-clockwise 0 degrees = East) | N |

Positional Accuracy: The minimum accepted horizontal accuracy for *Non GPT Simple* is **± 50mm**.

5.6.7 Pipe

General Information: Includes Stormwater drainage pipe between pits and pipe (ie culverts) between end structures.

Asset Capture: Simple linear feature representing the invert of the pipe or midpoint of a box asset. One feature represents multiple celled culverts/pipes; therefore, the number of cells is to be recorded in the "Cells" field of the table. The pipe/culvert is to be drawn in the direction from Gravity Upstream (read: higher AHD level) to Gravity Downstream (read: lower AHD level) to represent gravitation flow. Pipe features are captured from the intersection of pipe material and chamber wall. Refer to figures 7, 8 and 9 below.

Pipes are to be captured based on their physical and spatial properties and attributes. For example, if a pipe changes size, material, class, embedment, or direction etc. then it must be broken and captured separately.

Figure 7 represents a single-celled pipe asset where vertices one and four represent the maintenance hole capture and vertices two and three are the intersection of the Pipe material and the chamber wall.

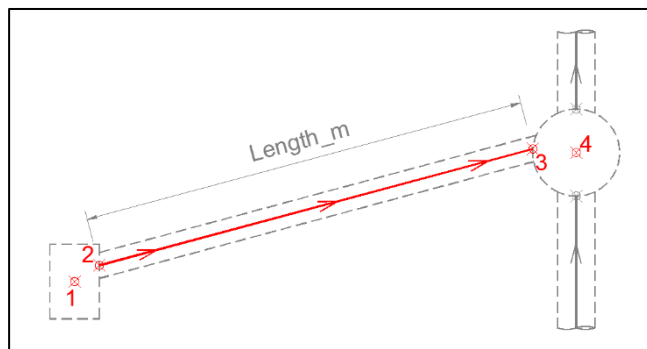


Figure 7

Figure 8 represents a multiple cell pipe/culvert arrangement. This arrangement is to be captured as a single linear feature from centre of end structure (vertex 1) to centre of end structure (vertex 2)

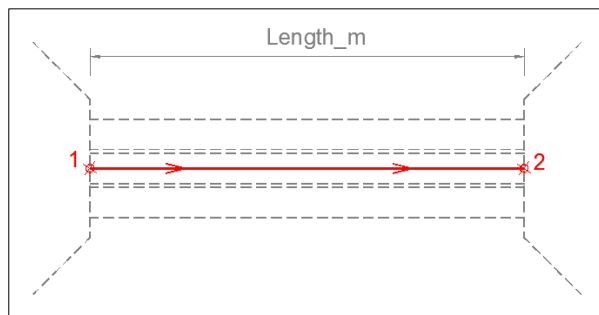


Figure 8

Figure 9 represents an irregular shaped pit with multiple multi-celled pipes entering the pit asset and a large single-celled asset exiting the pit with an outlet through an End Structure.

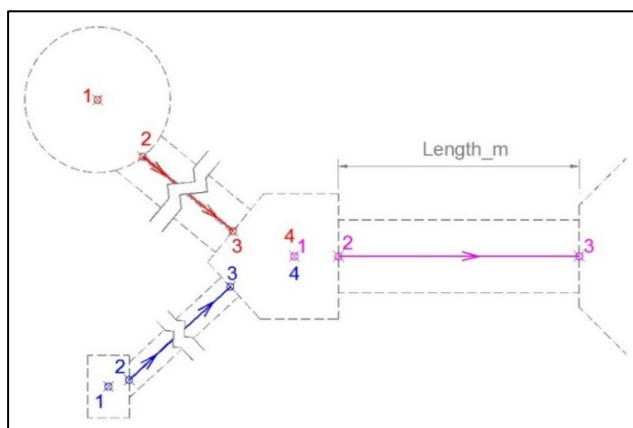


Figure 9

Spatial Relationship: May be coincident to Stormwater end structure features and snapped to the edge of the pit feature.

Mandatory Attribution: The following attribution is required for *Pipes*:

| Element Name | Attribute Description | Mandatory (Y/N) |
|-------------------|--|-----------------|
| US_InvertLevel_m | Invert level of this pipe end (in metres against the vertical datum). | Y |
| DS_InvertLevel_m | Invert level of this pipe end (in metres against the vertical datum). | Y |
| US_SurfaceLevel_m | Surface level (in metres against the vertical datum) vertically above this pipe end. | Y |

| | | |
|-------------------|--|-----------------|
| DS_SurfaceLevel_m | Surface level (in metres against the vertical datum) vertically above this pipe end. | Y |
| Diameter_mm | The internal diameter of the pipe in millimetres. | Y (if circular) |
| Height_mm | Height in millimetres of the internal cross section | Y (if box) |
| Width_mm | Width in millimetres of the internal cross section | Y (if box) |
| Material | The pipe wall material | Y |
| Class | The pipe wall class | Y (if circular) |
| JointType | The joint type of the pipe section | Y (if circular) |
| Cells | The number of cells in the pipe course. | Y |
| ConcreteCoverType | The pipe protection regime employed. | N |
| Grade | Pipe gradient as a percentage. Derivable from invert levels and horizontal length. | N |
| Length_m | Pipe material length in metres. | Y |

Positional Accuracy: The minimum accepted horizontal accuracy for *Pipes* is **± 50mm**.

5.6.8 Pit

General Information: None.

Asset Capture: Simple point feature representing the centre of chamber of a pit or manhole.
The InletConfig's Left/Centre/Right is referenced from the road crown looking at the lintel. Measurements of the "Pit" length, width, diameter, radius and extension measurements refer to the chamber dimensions (See figure 10).

Spatial Relationship: Not Applicable.

Mandatory Attribution: The following attribution is required for *Pits*:

| Element Name | Attribute Description | Mandatory (Y/N) |
|---------------------|--|--------------------|
| PitNumber | The pit identifier. | Y |
| Use | Purpose of the feature in the network. | Y |
| ChamberConstruction | Method of chamber construction. | N |
| Length_mm | Length in millimetres | Y (if rectangular) |
| Width_mm | Width in millimetres | Y (if rectangular) |
| Diameter_mm | Diameter in millimetres | Y (if circular) |
| Radius_mm | Radius, in millimetres, of the circular ends | Y (if extended) |
| Extension_mm | Distance, in millimetres, between the centre points of the circular ends | Y (if extended) |
| LidType | The type of lid or grate covering the opening. | Y (see Table 1) |
| SurfaceLevel_m | Surface level of this feature (in metres against the vertical datum). | Y |
| InvertLevel_m | Invert level of this feature (in metres against the vertical datum). | Y |
| Depth_m | The depth of the structure in metres. May be user-entered, or auto-calculated as the difference between the surface level and the invert level of the pit. | Y |
| InletConfig | Positioning of the inlet against the pit. | Y (see Table 1) |
| InletType | The type of inlet employed. | Y (see Table 1) |
| InletSize | Dimensions of the inlet e.g. Diameter or Length x Width. | Y (see Table 1) |

| | | |
|--------------------|--|-----------------|
| LintelConstruction | Method of lintel construction. | Y (see Table 1) |
| LintelLength_m | Represents the length in metres of the lintel. | Y (see Table 1) |
| OutletType | The type of outlet for this pit. | Y |
| FireRetardant | True or false value indicating whether fire retardant measures are incorporated. | N |
| Rotation | Rotation angle (cartesian - anti-clockwise 0 degrees = East) | N |

Positional Accuracy: The minimum accepted horizontal accuracy for *Pits* is **± 50mm**.

Table 1: Stormwater Pit Variations

| Asset Type | Attributes | |
|--------------------------|--------------------|--|
| Manhole | Use | Maintenance Hole, Roofwater Inspection Chamber |
| | LidType | required |
| | InletType | x |
| | InletSize | x |
| | InletConfig | x |
| | LintelConstruction | x |
| | LintelLength_m | x |
| Gully Pit / Catch Pit | Use | Kerb Inlet |
| | LidType | x |
| | InletType | required |
| | InletSize | required |
| | InletConfig | required for lip in line (LIL) or kerb in line (KIL) |
| | LintelConstruction | required |
| | LintelLength_m | required |
| Field Inlets | Use | Field Inlet |
| | LidType | x |
| | InletType | required |
| | InletSize | required |
| | InletConfig | x |
| | LintelConstruction | x |
| | LintelLength_m | x |
| All Others | Use | Pit, Roofwater Outlet |
| | LidType | x |
| | InletType | x |
| | InletSize | x |
| | InletConfig | x |
| | LintelConstruction | x |
| | LintelLength_m | x |

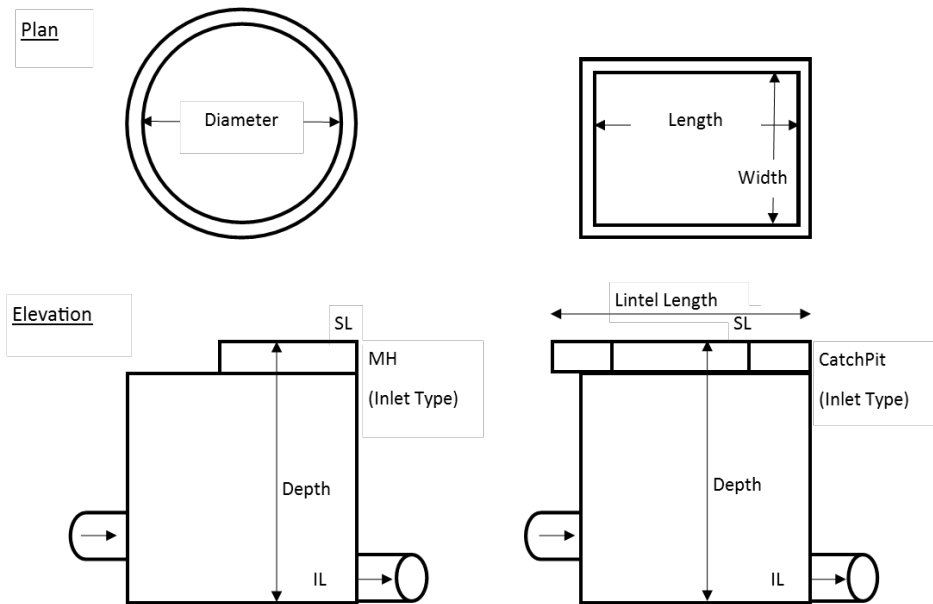


Figure 10: Stormwater Pit Dimensions

Asset Types

Maintenance hole – can be circular, square or rectangular with **no** surface inlet. The purpose of a maintenance hole is to change the direction of water flow.



Field Inlet

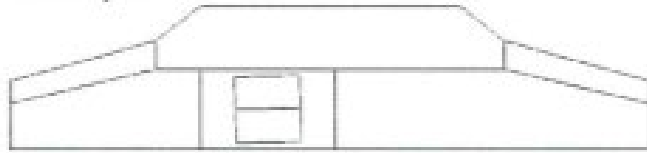


Field Inlet – Surge

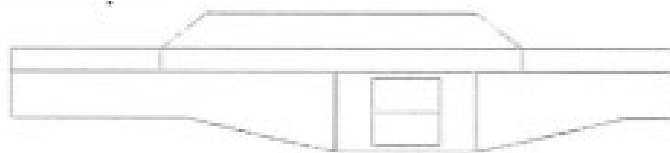


Field Inlet - Flush

Catch Pit – Lip in Line



Catch Pit – Kerb in Line



5.6.9 Surface Drain

General Information: None.

Asset Capture: Simple linear feature representing the invert of the channel. Surface Drains are to be captured based on their physical, spatial properties and attributes. For example, if a surface changes size, material, shape etc. then it must be captured separately.

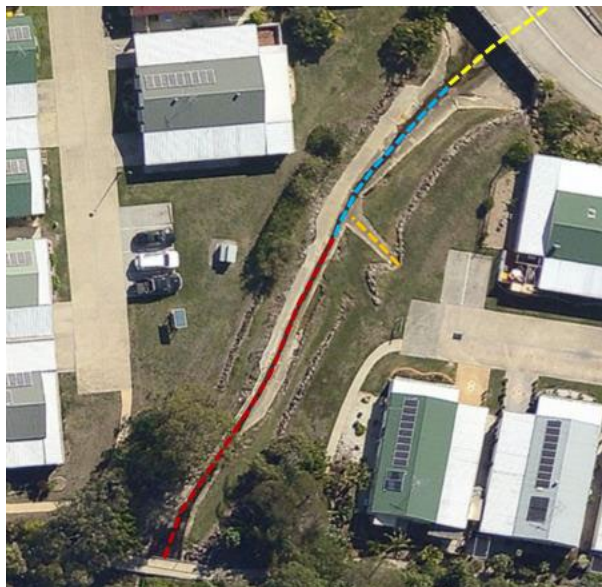


Figure 11

Figure 11 indicates the capture of a major surface drain as well as a smaller surface drain feeding into it. The main surface drain has been represented as a separate feature where the main change of width occurs (red and blue lines). The smaller surface drain ends at the intersection of the main surface drain's outer edge.

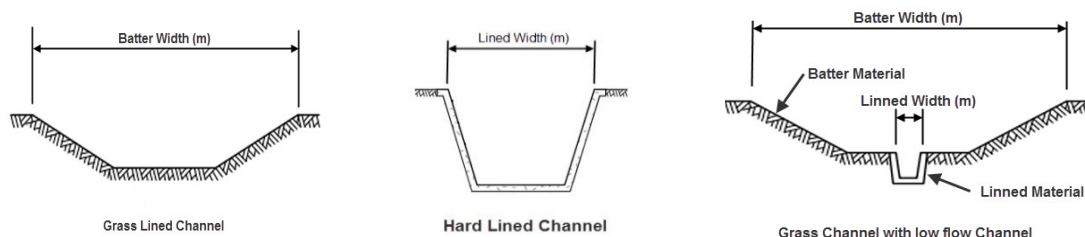


Figure 12

Figure 12 indicates where to collect the width of the channel for different Channel configurations and materials.

Spatial Relationship: May be coincident to End Structures and WSUD regions/polygons.

Mandatory Attribution: The following attribution is required for *Surface Drains*:

| Element Name | Attribute Description | Mandatory (Y/N) |
|------------------|---|-----------------|
| Type | The type of drain or channel. | Y |
| DrainShape | Cross-sectional shape of the drain. | Y |
| LiningMaterial | The material that the channel is lined with. | Y |
| LinedWidth_m | The width, in metres, of the lined portion of the channel. | Y |
| BatterMaterial | The material that the drain batter is lined with. A null value may be supplied where the drain has no batter. | Y |
| BatterWidth_m | The total width, in metres, from lip of batter to opposite lip of batter. A null value may be supplied where the drain has no batter. | Y |
| US_InvertLevel_m | Upstream Invert level of the Surface Drain (in metres against the vertical datum). | Y |
| DS_InvertLevel_m | Downstream Invert level of the Surface Drain (in metres against the vertical datum). | Y |
| AverageGrade | The average gradient over the whole length of the feature, as a percentage. Derivable from the difference in invert levels and the horizontal length of the geometry. | N |
| Length_m | The material length, in metres, of the centreline of the channel. | Y |

Positional Accuracy: The minimum accepted horizontal accuracy for *Surface Drains* is $\pm 1\text{m}$.

5.6.10 WSUD Complex Area

General Information: None.

Asset Capture: Water Sensitive Urban Design (WSUD) areas such as kerbside bio-filtration beds, constructed water bodies or purpose-built drainage swales should be captured individually as a region/polygon. Individual areas are to be recorded within the ADAC data capture fields defining class type (e.g. swale, buffer strip, bio-retention basin, sedimentation forebay). Any associated infrastructure with the WSUD (e.g. vehicle accesses, fences, gates, etc.) should be captured separately. Spillways are to be recorded in the WSUD Area attributes.

Note: Constructed Waterbodies are to be captured as a WSUD Area and noted in the comments that the asset is a “Constructed waterbody”.

Sedimentation Forebays are to be captured as an individual region/polygon under the WSUD Complex Area layer and noted in the comments that the asset is a “Sedimentation forebay”. See figure 13.



Figure 13

Spatial Relationship: Not Applicable.

Mandatory Attribution: The following attribution is required for *WSUD Complex Areas*:

| Element Name | Attribute Description | Mandatory (Y/N) |
|-----------------------|--|-----------------|
| Sqid_Id | The string identifier of the device, as it would appear on a plan. | N |
| TreatmentMeasure | The treatment measure employed. Choose from a list relevant to complex area features. | Y |
| Function1 | The first function of the WSUD area. At least one function must be supplied. Choose from a list relevant to complex area features. | Y |
| Function2 | The second function of the WSUD area, if applicable. | N |
| Function3 | The third function of the WSUD area, if applicable. | N |
| PondingArea_m2 | Area of Temporary Ponding or Extended Detention in square metres. | Y |
| PondingDepth_m | Average depth of Temporary Ponding or Extended Detention in metres. | Y |
| FilterArea_m2 | Area of Bioretention filter media in square metres. | Y |
| FilterDepth_m | Depth of Bioretention filter media in metres. | Y |
| TransitionDepth_m | Depth of the Bioretention Transition Layer in metres. | N |
| DrainageDepth_m | Depth of the Bioretention Drainage Layer in metres. | N |
| MacrophyteZoneArea_m2 | The vegetated area in square metres (may be zero). Area of vegetated portion of constructed wetland (macrophyte zone) | N |
| MacrophyteZoneDepth_m | Average depth of vegetated portion of constructed wetland (macrophyte zone). | N |
| CoarseSedimentArea_m2 | Maximum area of ponding (for coarse sediment capture) before bypass. | N |

| | | |
|------------------------|---|---|
| SedimentVolume_m3 | Volume of sediment capacity in cubic metres | N |
| MinSurfaceLevel_m | Minimum surface level within structure (above or below water surface level). | N |
| PermanentPondLevel_m | Water surface level during normal dry weather. | N |
| OutletLevel_m | The surface level in metres of the bypass, or spillway, or other overflow outlet structure. | Y |
| DesignFlow_m3s | The maximum design flow of the feature in cubic metres per second | N |
| HasSpillway | Whether the feature has a spillway | Y |
| MaintenanceCycle_mnths | The minimum maintenance cycle in months (refer to specifications) | N |

Positional Accuracy: The minimum accepted horizontal accuracy for *WSUD Complex Areas* is **± 0.5m**.

5.7 Transport

5.7.1 Flush Point

General Information: None.

Asset Capture: Simple point feature representing the outlet of sub-soil drains into drainage pits/maintenance holes.

Spatial Relationship: Must be coincident to Sub Soil Drain assets.

Mandatory Attribution: The following attribution is required for *Flush Points*:

| Element Name | Attribute Description | Mandatory (Y/N) |
|--------------|---|-----------------|
| Function | The function of the flushing out point. Eg Cleanout, Surface Outlet | Y |

Positional Accuracy: The minimum accepted horizontal accuracy for *Flush Points* is **± 1m**.

5.7.2 Parking

General Information: None.

Asset Capture: Multi-patch region/polygon feature representing the area of Parking. Asset capture is based on physicality therefore separate regions/polygons are required if any part of the pavement profile changes i.e. Surface, Base, Sub-Base, Lower Sub-Base and/or Subgrade.

Spatial Relationship: Must be coincident to other regions representing pavement / parking where there is a common boundary (e.g. no slivers/overlaps).

Mandatory Attribution: The following attribution is required for *Parking*:

| Element Name | Attribute Description | Mandatory (Y/N) |
|--------------|--|-----------------|
| Name | Parking area name | Y |
| NoOfCarparks | Number of individual vehicle spaces. | N |
| OnOffStreet | Value indicating whether the parking is an uninterrupted part of the road pavement, or a separate area with road access. | Y |
| SurfaceType | The surface type of the parking area. Asphalt, Full Depth Asphalt etc. | Y |

| | | |
|---------------------------|--|---------------------------------|
| SurfaceThickness_mm | The surface thickness in millimetres | Y |
| SurfaceArea_sqm | The area of the parking surface as a decimal number in square metres. | Y |
| PavementType | Pavement construction type | Y |
| BaseLayerType | Construction type of the base layer. Must be Concrete if PavementType is Rigid, otherwise must not be Concrete | Y |
| BaseLayerDepth_mm | Base layer depth in millimetres | Y |
| BaseStabilisation | Base layer stabilisation method | Y (if Base stabilised) |
| SubBaseLayerType | Construction type of the sub-base layer. | Y (if SubBase exists) |
| SubBaseLayerDepth_mm | Sub-base layer depth in millimetres | Y (if SubBase exists) |
| SubBaseStabilisation | Sub-base layer stabilisation method | Y (if SubBase stabilised) |
| LowerSubBaseLayerType | Construction type of the lower sub-base layer. | Y (if Lower SubBase exists) |
| LowerSubBaseLayerDepth_mm | Lower sub-base layer depth in millimetres | Y (if Lower SubBase exists) |
| LowerSubBaseStabilisation | Lower sub-base layer stabilisation method | Y (if Lower SubBase stabilised) |
| PavementGeoTextile | Pavement geotextile type. | N |
| SubgradeCBR | California Bearing Ratio. An expression of the load bearing and shear properties of the material. | Y |
| SubgradeStabilisation | Subgrade stabilisation method | N |

Positional Accuracy: The minimum accepted horizontal accuracy for *Parking* is **± 50mm**.

5.7.3 Path Structure

General Information: None.

Asset Capture: Complex linear feature (polylines including curves but not Bezier curves) representing the centre longitudinal axis of a path structure. Path Structures include boardwalks, footbridges, stairs, ramps & underpasses.
When capturing stairs, the number of treads should be recorded in the **Notes** field.

Spatial Relationship: Changes in surface types or widths must be represented as separate features.

Mandatory Attribution: The following attribution is required for *Path Structures*:

| Element Name | Attribute Description | Mandatory (Y/N) |
|----------------------|--|-----------------|
| Use | Intended path use of the structure. Eg. Shared, Cycleway, Pedestrian etc | Y |
| Structure | Type of pathway structure. Eg. Stairs, Ramp etc. | Y |
| SurfaceMaterial | Surface material of the structure. | Y |
| SubStructureMaterial | Material of the sub structure. | Y |
| Width_m | Nominal width of the pathway in metres. | Y |

Positional Accuracy: The minimum accepted horizontal accuracy for *Path Structures* is $\pm 0.5\text{m}$.

5.7.4 Pathway / Cycleway

General Information: None.

Asset Capture: Complex linear feature (polylines including curves but not Bezier curves) representing the centre longitudinal axis of a pathway. Changes in surface types or widths must be represented as separate features. If the pathway has a name please specify in the 'Notes' section.



Figure 13

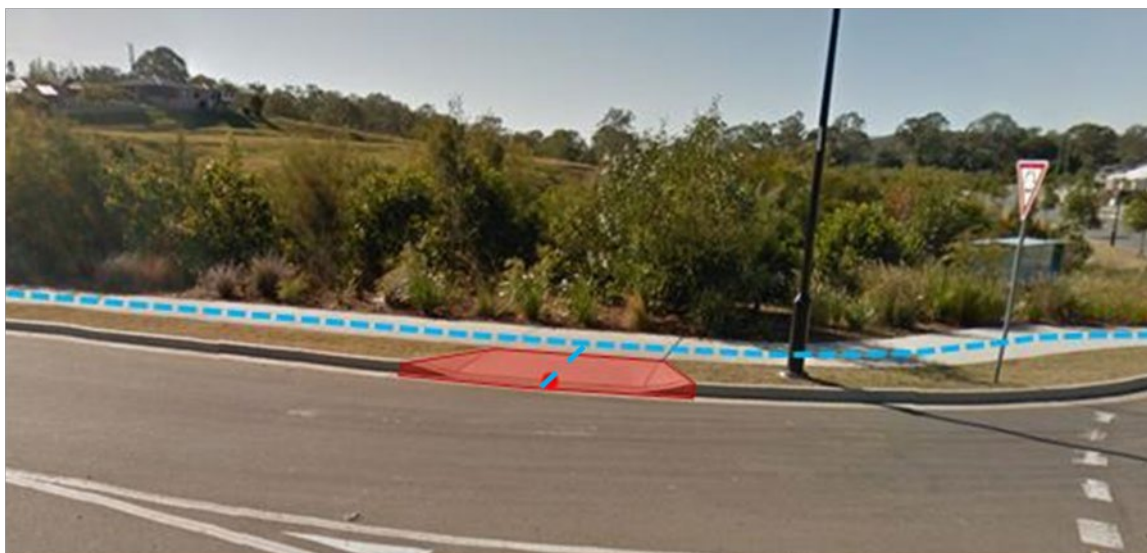


Figure 14

Spatial Relationship:

When capturing pathways, the 'Use' attribute defines the purpose of the asset.

Shared – Path is utilised by both Pedestrian and Cyclist (most common arrangement) – Refer Figure 13 & 14 Blue Dashed Line

Cycleway – Path defined for Cyclists - Refer Figure 15 Yellow Dashed Line

Pedestrian – Path defined for Pedestrian - Refer Figure 15 Pink Dashed Line



Figure 15

Mandatory Attribution:

The following attribution is required for *Pathways*:

| Element Name | Attribute Description | Mandatory (Y/N) |
|-----------------|---|-----------------|
| Use | Intended path use of the structure. Eg. Shared, Cycleway, Pedestrian etc | Y |
| Structure | Type of pathway structure. A fixed value of In Ground is required for this sub type | Y |
| SurfaceMaterial | Surface material of the structure. | Y |

| | | |
|----------|---|---|
| Width_m | Nominal width of the pathway in metres. | Y |
| Depth_mm | The nominal depth of the pathway material in millimetres. | Y |

Positional Accuracy: The minimum accepted horizontal accuracy for *Pathways* is **± 0.5m**.

5.7.5 Pram Ramp

General Information: None.

Asset Capture: Simple point feature representing a pram ramp. Typically captured in the centre of Pram Ramp where it transitions to a Kerb/Road. Refer to Figures 13 and 14 for the capture of Pram Ramps. The pram ramp (which is highlighted by the red polygon) is captured based on the red point.

Spatial Relationship: May be coincident with a Road Edge feature.

Mandatory Attribution: The following attribution is required for *Pram Ramps*:

| Element Name | Attribute Description | Mandatory (Y/N) |
|--------------|--|-----------------|
| Rotation | Rotation angle (cartesian - anti-clockwise 0 degrees = East) | Y |

Positional Accuracy: The minimum accepted horizontal accuracy for *Pram Ramps* is **± 0.5m**.

5.7.6 Pavement

General Information: None.

Asset Capture: Multi-patch region/polygon feature representing the area of Pavement. Asset capture is based on physicality therefore separate regions/polygons are required if any part of the pavement profile changes i.e. Surface, Base, Sub-Base, Lower Sub-Base and/or Subgrade. Please refer to the solid blue transparent fill in figure 16 below for a typical representation of Pavement capture

Spatial Relationship: Must be coincident to other regions representing pavement / parking where there is a common boundary- no slivers/overlaps.



Figure 16

Mandatory Attribution: The following attribution is required for *Pavements*:

| Element Name | Attribute Description | Mandatory (Y/N) |
|----------------------|--|---------------------------|
| Name | The gazetted, or proposed, road name. | Y |
| SurfaceType | The surface type of the parking area. Asphalt, Full Depth Asphalt etc. | Y |
| SurfaceThickness_mm | The surface thickness in millimetres | Y |
| SurfaceNomWidth_m | The nominal width of the surface of the road or street as a decimal number in metres. | Y |
| PavementType | Pavement construction type | Y |
| BaseLayerType | Construction type of the base layer. Must be Concrete if PavementType is Rigid, otherwise must not be Concrete | Y |
| BaseLayerDepth_mm | Base layer depth in millimetres | Y |
| BaseStabilisation | Base layer stabilisation method | Y (if Base stabilised) |
| SubBaseLayerType | Construction type of the sub-base layer. | Y (if SubBase exists) |
| SubBaseLayerDepth_mm | Sub-base layer depth in millimetres | Y (if SubBase exists) |
| SubBaseStabilisation | Sub-base layer stabilisation method | Y (if SubBase stabilised) |

| | | |
|---------------------------|---|---------------------------------|
| LowerSubBaseLayerType | Construction type of the lower sub-base layer. | Y (if Lower SubBase exists) |
| LowerSubBaseLayerDepth_mm | Lower sub-base layer depth in millimetres | Y (if Lower SubBase exists) |
| LowerSubBaseStabilisation | Lower sub-base layer stabilisation method | Y (if Lower SubBase stabilised) |
| PavementGeoTextile | Pavement geotextile type. | N |
| SubgradeCBR | California Bearing Ratio. An expression of the load bearing and shear properties of the material. | Y |
| SubgradeStabilisation | Subgrade stabilisation method | N |

Positional Accuracy: The minimum accepted horizontal accuracy for *Pavements* is $\pm 50\text{mm}$.

5.7.7 Road Edge

General Information: None.

Asset Capture: Complex linear feature (polylines including curves but not bézier curves) representing the lip/front edge of kerb, Refer yellow dashed line in figure 17



Figure 17

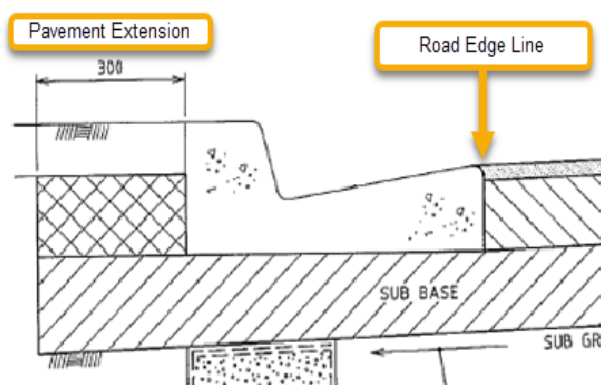


Figure 18:

Spatial Relationship: Must be coincident to other polygons representing road pavement where there is a common boundary between kerb lines and the road pavement edges i.e. no slivers and/or overlaps. Segmentation of road edge is not required for driveway crossovers and pram ramps. If Pavement Extension is constructed, dimension should be captured in accordance with the Figure 18 above. Where no pavement extension exists, a value of 999 is to be recorded in the pavement extension value.

Mandatory Attribution: The following attribution is required for *Road Edges*:

| Element Name | Attribute Description | Mandatory (Y/N) |
|--------------|--|-----------------|
| Type | Road edge configuration. Eg. Barrier Kerb, Barrier Kerb and Channel etc. | Y |
| Material | Material of Road Edge. | Y |
| Width_mm | Width in millimetres of the Edge feature. | Y |
| Length_m | Length in metres of edge material. | Y |

| | | |
|----------------------|--|---|
| PavementExtension_mm | The pavement extension, in millimetres, behind the back of kerb. | Y |
|----------------------|--|---|

Positional Accuracy: The minimum accepted horizontal accuracy for *Road Edge* is **± 50mm**.

5.7.8 Road Island

General Information: None.

Asset Capture: Multi-patch region/polygon feature representing the area of Island bounded by the back of Kerb features. Asset capture is based on physicality therefore separate regions/polygons are required if the Type of Island or Infill changes. Where the Road Island is landscaped, the asset is to be captured as a Road Island with landscaped infill and therefore there is no requirement to capture a Landscape Area as a separate Open Space asset. Refer to figure 19 for an example of asset capture. Road islands are to be cut from the Road Pavement polygon and offset by the width of kerb.



Figure 19

Spatial Relationship: Must be coincident to other regions representing road islands where changes of infill material changes share a common boundary i.e. no slivers and/or overlaps.

Mandatory Attribution: The following attribution is required for *Road Islands*:

| Element Name | Attribute Description | Mandatory (Y/N) |
|--------------|---|-----------------|
| Type | Type of Road Island. Eg. Pedestrian Refuge, Roundabout, Centre median | Y |
| Area_sqm | The area, in square metres, of the infill. | Y |
| InfillType | Type of Road Island Infill. Eg. AC, Concrete, Grass, Landscape etc. | Y |

Positional Accuracy: The minimum accepted horizontal accuracy for *Road Islands* is **± 50mm**.

5.7.9 Road Pathway

General Information: None.

Asset Capture: Complex linear feature (polylines including curves but not Bezier curves) representing the centre longitudinal axis of a road pathway (on-road cycleway) Refer Figure 20 – White and Green Dashed Lines. The structure and Surface Material are to be recorded for the different type of road pathways as defined below.

Structure = Bicycle Awareness Zone

Surface Material = Yellow Bicycle Symbol

Structure = Exclusive Bicycle Lane

Surface Material = White Bicycle Symbol

Structure = Exclusive Green Bicycle Lane

Surface Material = Green Lane



Spatial Relationship: Not applicable

Mandatory Attribution: The following attribution is required for *Road Pathways*:

| Element Name | Attribute Description | Mandatory (Y/N) |
|-----------------|---|-----------------|
| Use | Intended traffic use of the structure. Eg. Cycleway | Y |
| Structure | Type of pathway structure. A fixed value of On Road is required for this sub type | Y |
| SurfaceMaterial | Surface material of the structure. A fixed value of Road Pavement is applied to this sub type. | Y |
| Width_m | Nominal width of the marked pathway in metres. | Y |

Positional Accuracy: The minimum accepted horizontal accuracy for *Road Pathways* is $\pm 0.5\text{m}$.



Figure 20

5.7.10 Sub Soil Drain

General Information: None.

Asset Capture: Simple Linear feature (i.e. straight lines) representing the Invert of a circular sub-soil drain pipe asset. Pipes are typically broken where the Use and/or Type of drain changes.

Spatial Relationship: Must be coincident to Flush Points.

Mandatory Attribution: The following attribution is required for *Sub Soil Drains*:

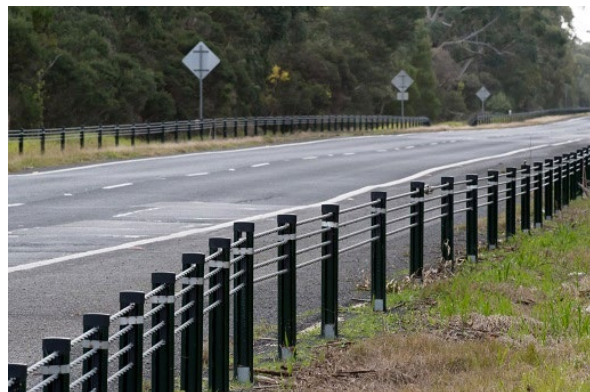
| Element Name | Attribute Description | Mandatory (Y/N) |
|--------------|--|-----------------|
| Use | The use (orientation) of the drain. | Y |
| Type | The type (configuration) of the drain. | Y |
| Length_m | The length in metres of the drain. | Y |

Positional Accuracy: The minimum accepted horizontal accuracy for *Sub Soil Drains* is $\pm 0.5\text{m}$.

5.7.11 Road Safety Barrier

General Information: None.

Asset Capture: Complex linear feature (polylines including curves but not bézier curves) representing a road safety barrier asset (guardrail).



Spatial Relationship: None.

Mandatory Attribution: The following attribution is mandatory for *Road Safety Barrier*:

| Element Name | Attribute Description | Mandatory (Y/N) |
|------------------------------|--|-----------------|
| Type | The type of road safety barrier employed. | Y** |
| LeadingEndTreatment | The type of Leading End treatment. | Y |
| TrailingEndTreatmentl | The type of Trailing End treatment. | Y |
| StandardHeight | Is barrier height standard? | N |
| Height_m | Nominal height of the barrier in metres. | Y |
| Length_m | Nominal length of the barrier in metres including terminals. | Y |
| MotorcyclistProtectionType | The type of motorcyclist protection rail. | N |
| PedestrianProtectionSheeting | as pedestrian protection sheeting been installed? | N |

| | | |
|---------------------|---|---|
| BridgeTransition | Is this a bridge transition? | Y |
| StandardPostSpacing | Is the post spacing standard? | N |
| PostSpacing_m | Spacing of posts in metres. | Y |
| PostType | The material type of post installed with road safety barrier. | Y |
| RailType | The material type of rail installed with road safety barrier. | Y |
| HorizontalAlignment | Horizontal alignment of road safety barrier. | N |
| NumberOfBollards | Number of bollards. | Y |

* 'Rigid/Semi-rigid Combination', 'Flexible/Rigid Combination' and 'Flexible/Semi-rigid Combination' types will not be accepted by SCC.

* If Type is a 'Thrie Beam' please specify in the Notes field, otherwise all Semi-rigid types assumed 'W Beam'.

Positional Accuracy: The minimum accepted horizontal accuracy for *Road Safety Barrier* is **± 0.5m**.

5.7.12 Bridge Extent

General Information: Bridge Extent describes the envelope or footprint for the whole structure and all its parts.

Asset Capture: Multi-patch region/polygon feature representing the bridge extent.



Spatial Relationship: Must be coincident to other regions representing bridge components where there is a common boundary i.e. no slivers and/or overlaps.

Mandatory Attribution: The following attribution is mandatory for *Bridge Extent*

| Element Name | Attribute Description | Mandatory (Y/N) |
|--------------------|---|-----------------|
| BridgeID | Unique identifier, used to associate components of the same bridge assembly. | Y |
| Name | Road name or nearest road where bridge resides, or the recognised name of the bridge. | Y |
| Use | Predominant use of bridge. | Y |
| Type | Type of bridge construction. | Y |
| CrossingType | The layout and configuration of this structure. | Y |
| Spans | Number of spans. | Y |
| MinimumClearance_m | Minimum clearance in metres. | Y |

| | | |
|---------------------|--------------------------------------|---|
| PredominantMaterial | Predominant Material of bridge. | Y |
| DesignLoad | Design load of bridge as per AS5100. | Y |

Positional Accuracy: The minimum accepted horizontal accuracy for *Bridge Extent* is $\pm 50\text{mm}$.

5.7.13 Bridge Deck

General Information: A single deck unit between abutments or supports.

Asset Capture: Multi-patch region/polygon feature representing the bridge deck.

Spatial Relationship: Must be coincident to other regions representing bridge components where there is a common boundary i.e. no slivers and/or overlaps.

Mandatory Attribution: The following attribution is mandatory for *Bridge Deck*

| Element Name | Attribute Description | Mandatory (Y/N) |
|--------------|--|-----------------|
| BridgeID | Unique identifier, used to associate components of the same bridge assembly. | Y |
| Material | Material types for Bridge deck. | Y |
| NomWidth_m | Nominal Width of deck in metres. | Y |
| DeckLength_m | Length of Bridge deck between joints at abutments in metres. | Y |

Positional Accuracy: The minimum accepted horizontal accuracy for *Bridge Deck* is $\pm 50\text{mm}$.

5.7.14 Bridge Superstructure

General Information: A single superstructure between abutments or supports.

Asset Capture: Multi-patch region/polygon feature representing the bridge superstructure.

Spatial Relationship: Must be coincident to other regions representing bridge components where there is a common boundary i.e. no slivers and/or overlaps.

Mandatory Attribution: The following attribution is mandatory for *Bridge Superstructure*

| Element Name | Attribute Description | Mandatory (Y/N) |
|--------------|--|-----------------|
| BridgeID | Unique identifier, used to associate components of the same bridge assembly. | Y |
| Material | Material types for the Superstructure. | Y |

Positional Accuracy: The minimum accepted horizontal accuracy for *Bridge Superstructure* is $\pm 50\text{mm}$.

5.7.15 Bridge Abutment

Not required to be captured

5.7.16 Bridge Pier

Not required to be captured

5.7.17 Containment Class

Not required to be captured

5.8 Water Supply

5.8.1 Pipe

General Information: None.

Asset Capture: Simple Linear feature (i.e. straight lines) representing the Invert of a circular pipe asset. Pipe segments are to be captured based on the pipe attributes. If any physical element of a pipe changes (e.g. size, material, class etc.) then the pipe asset must be broken and captured separately. Council owned pipe on customer side of the meter distributing water from mains to internal fixtures is to be captured and recorded as use = internal. Water pipe for Council irrigation purposes are to be captured and recorded as use = irrigation.



Spatial Relationship: Not applicable.

Mandatory Attribution: The following attribution is mandatory for *Pipes*:

| Element Name | Attribute Description | Mandatory (Y/N) |
|--------------|--|-----------------|
| Use | The purpose of this feature in the network. Eg Service, Irrigation etc. | Y |
| WaterQuality | The quality of the water being carried by the pipe. Eg. Rainwater, Drinking Water, Recycled A etc. | Y |
| Alignment_m | Offset from cadastral boundary to the main. | N |
| Diameter_mm | Nominal diameter of the pipe in millimetres. | Y |
| Material | The pipe material. | Y |
| Class | The pipe class as specified by the manufacture. Pipe class refers to the wall thickness and performance of the material. | N |
| Lining | The internal corrosion protection method employed on the pipe material. | N |

| | | |
|------------|---|---|
| Protection | The external corrosion protection method employed on the pipe material. | N |
| JointType | Pipe jointing method employed. | N |
| Depth_m | The average depth in metres that the pipe is buried. | N |
| Embedment | Embedment types. | N |
| Length_m | Material length of the pipe in metres. | Y |

Positional Accuracy: The minimum accepted horizontal accuracy for *Pipes* is $\pm 0.1\text{m}$.

5.8.1 Meter

General Information: None.

Asset Capture: Single point feature located at the centre point of the domestic meter.

Spatial Relationship: Not applicable.

Mandatory Attribution: The following attribution is mandatory for *Meters*:

| Element Name | Attribute Description | Mandatory (Y/N) |
|---------------|--|-----------------|
| Serial Number | The manufacturers serial number, as stamped or fixed on the meter. | Y |
| Type | Configuration of the meter. | Y |
| Diameter_mm | The nominal bore diameter of the meter. | Y |

Positional Accuracy: The minimum accepted horizontal accuracy for *Meters* is $\pm 0.1\text{m}$.

5.8.1 Service Fitting

General Information: Includes Dog Bowls, Drinking Fountains, Fountain Decorative, Filling Station, Showers, Taps, etc.

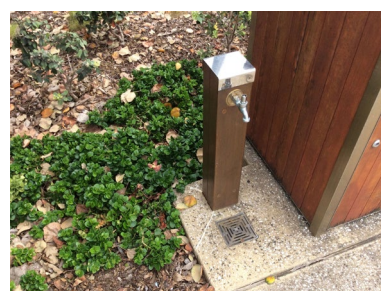
Asset Capture: Single point feature representing the centre point of the fitting.



Drinking Fountain with Dog Bowl



Shower



Tap

Spatial Relationship: Must be coincident to a pipe asset in the water reticulation network.

Mandatory Attribution: The following attribution is mandatory for *Service Fittings*:

| Element Name | Attribute Description | Mandatory (Y/N) |
|--------------|-----------------------------|-----------------|
| Type | The type of service fitting | Y |
| BelowGround | Is the fitting below ground | Y |

| | | |
|--------------|--|---|
| WaterSaver | Does the fitting employ waste minimisation technology (other than auto shut-off) | N |
| AutoShutOff | Does the fitting employ auto shut-off technology | Y |
| Rotation | Rotation angle (cartesian - anti-clockwise 0 degrees = East) | N |
| WaterQuality | The quality/source of the water being supplied through the service fitting. | Y |

Positional Accuracy: The minimum accepted horizontal accuracy for *Service Fittings* is **± 0.1m**.

5.8.1 Valve

General Information: None.

Asset Capture: Single point feature representing the centre of a valve body, typically the spindle.

Spatial Relationship: Must be coincident to a Water Pipe asset.

Mandatory Attribution: The following attribution is mandatory for *Valves*:

| Element Name | Attribute Description | Mandatory (Y/N) |
|--------------|--|-----------------|
| Use | The purpose of the valve in the network. | N |
| Type | The type of valve. | Y |
| Diameter_mm | The nominal bore diameter of the valve. | Y |

Positional Accuracy: The minimum accepted horizontal accuracy for *Valves* is **± 0.1m**.

5.8.1 Storage Tank

General Information: None.

Asset Capture: Single point feature located on the centre of the chamber.

Spatial Relationship: None.

Mandatory Attribution: The following attribution is mandatory for Storage Tanks:

| Element Name | Attribute Description | Mandatory (Y/N) |
|--------------|---|-----------------|
| Material | The material that the storage tank is made from. | Y* |
| Source | The source of water in the tank. Eg. Rainwater, Groundwater, Mains Service etc. | Y |
| Manufacturer | The Manufacturer of the unit | Y |
| ModelNumber | The standard code, model number or part number for the unit | N |
| Volume_m3 | The effective volume in cubic metres. | Y |

*Please specify in Notes what type of steel, eg. Galvanised Steel, etc.

Positional Accuracy: The minimum accepted horizontal accuracy for *Storage Tanks* is $\pm 1\text{m}$.

5.9 Sewerage

5.9.1 Maintenance Hole

General Information: None.

Asset Capture: Single point feature located at the centre of chamber on the top surface.
Note: Capturing centre of lid is appropriate only when the lid is centred over the chamber.

Spatial Relationship: Must be coincident to the end of pipe assets or a pipe asset anywhere along its length.

Mandatory Attribution: The following attribution is mandatory for *Maintenance Holes*:

| Element Name | Attribute Description | Mandatory (Y/N) |
|----------------|--|-----------------|
| Use | Use or purpose of this MaintenanceHole in the network | Y |
| ChamberSize | Data structure describing the chamber configuration and dimensions. | Y |
| SurfaceLevel_m | The height of the top surface of the lid, hatch, rim or roof. Surface level in metres against the vertical datum for this project. | Y |
| InvertLevel_m | The height of the top surface of interior floor/bottom. Invert level in metres against the vertical datum for this project. | Y |
| LidMaterial | Chamber lid configuration and material | Y |

Positional Accuracy: The minimum accepted horizontal accuracy for *Maintenance Holes* is $\pm 0.1\text{m}$.

5.9.2 Non Pressure Pipe

General Information: None.

Asset Capture: Complex linear feature (polylines including curves but not Bezier curves) representing the invert of the pipe asset. Line direction should be enforced from Gravity Upstream (higher AHD level) to Gravity Downstream (lower AHD level) due to gravitation flow in each individual pipe.

The gravity upstream and downstream ends of an individual pipe are captured at the intersection between the pipe material and the wall of the chamber. Refer to Figure 21 for a detailed diagram. Points 2 and 3 represent the intersection of pipe material and chamber wall whereas points 1 and 4 represent the Maintenance Holes capture.

Pipes are to be captured based on their physical and spatial properties and attributes. For example, if a pipe changes size, material, class, embedment or direction etc. then it must be broken and captured separately.

Spatial Relationship: Not Applicable

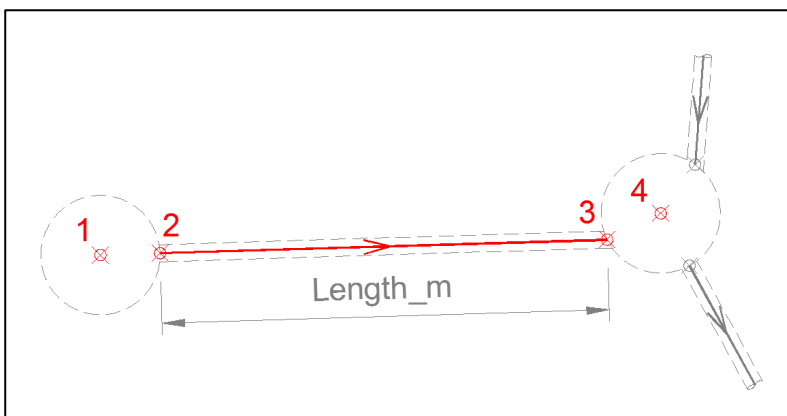


Figure 21

Mandatory Attribution: The following attribution is mandatory for *Non Pressure Pipes*:

| Element Name | Attribute Description | Mandatory (Y/N) |
|-------------------|--|-----------------|
| LineNumber | The sewer line identifier | N |
| Use | The function of this pipe in the network. | Y |
| Diameter_mm | Nominal pipe diameter in millimetres. | Y |
| Material | Pipe material | Y |
| Class | The pipe class as specified by the manufacture. Pipe class refers to the wall thickness and performance of the material. | Y |
| Lining | The internal corrosion protection method employed on the pipe material. | Y |
| Protection | The external corrosion protection method employed on the pipe material. | Y |
| US_InvertLevel_m | UpStream Invert level of this pipe end (in metres against the vertical datum). | Y |
| DS_InvertLevel_m | DownStream Invert level of this pipe end (in metres against the vertical datum). | Y |
| US_SurfaceLevel_m | UpStream Surface level (in metres against the vertical datum) vertically above this pipe end. | Y |
| DS_SurfaceLevel_m | DownStream Surface level (in metres against the vertical datum) vertically above this pipe end. | Y |
| Alignment_m | Average offset distance in metres from cadastral boundary to the main. | N |
| Depth_m | Nominal depth in metres to the top of the pipe. | Y |
| Length_m | Actual material length of the pipe. Not the horizontal length of the geometry. | Y |

Positional Accuracy: The minimum accepted horizontal accuracy for *Non-Pressure Pipes* is **± 0.1m**.

5.9.3 Pressure Pipe

General Information: None.

Asset Capture: Complex linear feature (polylines including curves but not Bezier curves) representing the invert of the pipe asset. Line direction should be enforced from Pump active asset to Discharge Maintenance Hole due to pumped flow.

Pipes are to be captured based on their physical and spatial properties and attributes. For example, if a pipe changes size, material, class, embedment or direction etc. then it must be broken and captured separately.

Spatial Relationship: Not Applicable

Mandatory Attribution: The following attribution is mandatory for *Pressure Pipes*:

| Element Name | Attribute Description | Mandatory (Y/N) |
|--------------|--|-----------------|
| Use | The function of this pipe in the network. | Y |
| Diameter_mm | Nominal pipe diameter in millimetres. | Y |
| Material | Pipe material | Y |
| Class | The pipe class as specified by the manufacture. Pipe class refers to the wall thickness and performance of the material. | Y |
| Lining | The internal corrosion protection method employed on the pipe material. | Y |
| Protection | The external protection for the pipe. | Y |
| Depth_m | Nominal depth in metres to the top of the pipe. | Y |
| Length_m | Actual material length of the pipe. Not the horizontal length of the geometry. | Y |

Positional Accuracy: The minimum accepted horizontal accuracy for *Pressure Pipes* is $\pm 0.1\text{m}$.

5.9.4 Valve

General Information: None.

Asset Capture: Single point feature representing the centre of a valve body, typically the spindle.

Spatial Relationship: Must be coincident to the end of pipe assets or a pipe asset anywhere along its length.

Mandatory Attribution: The following attribution is mandatory for *Valves*:

| Element Name | Attribute Description | Mandatory (Y/N) |
|--------------|---|-----------------|
| Use | The function of this valve in the network. | Y |
| Type | The physical configuration of the valve | Y |
| Diameter_mm | The nominal bore diameter of the valve | Y |
| Manufacturer | The Manufacturer of the unit | N |
| ModelNumber | The standard code, model number or part number for the unit | N |

Positional Accuracy: The minimum accepted horizontal accuracy for *Valves* is $\pm 0.1\text{m}$.

Reference Document **ADAC Asset Data Dictionary**

To further assist in the creation on ADAC Assset Data reference should be made to the ADAC Asset Data Dictionary. The tables in this reference document, define the data structure and attribute values that make up the asset data schema.

The asset data schema tables are grouped based on the Asset Group Categories. These groups are defined to assist in locating asset types within schema and do not limit the capturing of asset information to the asset's physical location (ie Water Service Pipe in a Park will have it's asset schema defined in Water Supply, not OpenSpace)

Project Details

Transport

Stormwater

OpenSpace

Water Supply

Sewerage

Cadastre

