








## Water Resource Catchments Overlay Map

### Land Subject to Water Resource Catchments Overlay

-  Water Resource Catchment Area
-  Water Supply Storage

### Other Elements

-  Local Plan Area Boundary
-  Declared Master Planned Area (see Part 10 - Other Plans)
-  Land within Development Control Plan 1 - Kawana Waters which is the subject of the Kawana Waters Development Agreement (see Section 1.2 - Planning Scheme Components)
-  Priority Development Area (subject to the *Economic Development Act 2012*)
-  DCDB 28 January 2013 © State Government

**Note** — Overlays provide a trigger for consideration of an overlay issue to be verified by further on-site investigations.

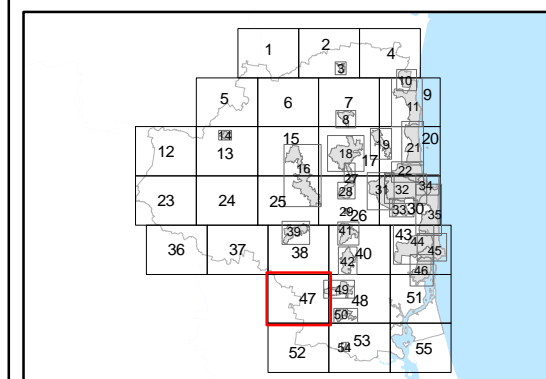
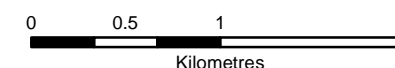
**Note** — In certain circumstances pre-existing development approvals may override the operation of an overlay.

**Disclaimer**  
While every care is taken to ensure the accuracy of this product, neither the Sunshine Coast Regional Council nor the State of Queensland makes any representations or warranties about its accuracy, reliability, completeness or suitability for any particular purpose and disclaims all responsibility and all liability (including without limitation, liability in negligence) for all expenses, losses, damages (including indirect or consequential damage) and costs that may occur as a result of the product being inaccurate or incomplete in any way or for any reason.

© Crown and Council Copyright Reserved 2014

Geocentric Datum of Australia 1994 (GDA94)

Approx Scale @ A3 1:40,000



## Overlay Map OVM 47M