







Coastal Protection Overlay Map

Land Subject to Coastal Protection Overlay

-  Coastal Protection Area
-  Maritime Development Area

Other Elements

-  Local Plan Area Boundary
-  Declared Master Planned Area (see Part 10 - Other Plans)
-  Land within Development Control Plan 1 - Kawana Waters which is the subject of the Kawana Waters Development Agreement (see Section 1.2 - Planning Scheme Components)
-  Priority Development Area (subject to the *Economic Development Act 2012*)

 DCDB 31 January 2017 © State Government

Note — Overlays provide a trigger for consideration of an overlay issue to be verified by further on-site investigations.

Note — In certain circumstances pre-existing development approvals may override the operation of an overlay.

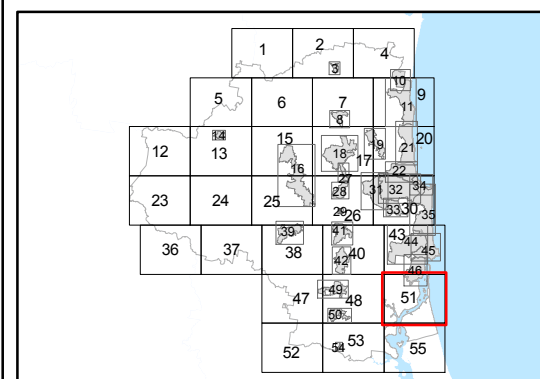
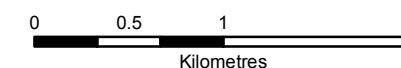
Disclaimer

While every care is taken to ensure the accuracy of this product, neither the Sunshine Coast Regional Council nor the State of Queensland makes any representations or warranties about its accuracy, reliability, completeness or suitability for any particular purpose and disclaims all responsibility and all liability (including without limitation, liability in negligence) for all expenses, losses, damages (including indirect or consequential damage) and costs that may occur as a result of the product being inaccurate or incomplete in any way or for any reason.

© Crown and Council Copyright Reserved 2017

Geocentric Datum of Australia 1994 (GDA94)

Approx Scale @ A3 1:40,000



Overlay Map OVM51E

Amended 27 February 2017

Sunshine Coast Planning Scheme 2014