



Beerburrum

Street tree strategy

Description of area and land use

The Beerburrum local plan area is 69 hectares in total. The locality consists of a very small town centre, 'in town' and rural residential estates, and farmlands with horticulture the predominant commercial land use. Nestled between the Glass House Mountains and sprawling Queensland Forestry pine plantations to the south east, the town is the southern gateway to the Sunshine Coast with key roads running through the plan area a part of the hinterland's scenic road network. Despite being on the tourist trail, the town's main function is to service its local community.

Trees and landscape character

The vegetated character and form of the immediate and wider landscape is dramatic with Mount Beerburrum perched above the township. Natural character blends with cultural landscape plantings that are equally intrinsic to the look and feel of the locality. An avenue of camphor laurel honours fallen soldiers in the town's heritage precinct where a classic country town streetscape character is found, complete with mature shade trees, a centre median and wide verges.

Scribbly gum, paperbark and swamp gum woodlands, tall open eucalypt forest and small pockets of vine forest (rainforest) once covered the plan area. Scribbly gum, pink bloodwood and blue gum remain the prominent natural character trees growing in road reserve of the plan area today. Lemon-scented gums and swamp bloodwoods provide accent and colour. Camphor laurel, poinciana, mango and frangipani are also well-represented in the township.

Canopy cover

While statistics reported for canopy cover over road reserve spaces were exceptionally high when compared to other Sunshine Coast localities (47% of road reserve spaces contain direct tree cover and 83% of road reserve spaces are either directly covered in vegetation or shaded by low-angled light in the summer months), average cover across all land types reported was only average for the Sunshine Coast (33% tree cover across all lands in the plan area). The associated *Foliage and Shade Cover* map shows a large open area of land in the southern section of the plan area. This land now contains a growing rural residential estate where a good mix of juvenile trees are establishing (brush box does however appear to be over-represented).

Major opportunities and constraints

While the town itself contains a strong landscape character, street tree establishment opportunities exist in the form of entry way, infill and avenue extensions plantings. Natural character vegetation on intersections and along the railway line makes a significant impression however the main avenue of trees running through the centre of town is under performing, with a number of key plantings missing all together.

Infill planting in and around town will help reinforce the shady character of the town's heritage precinct. Good opportunity to reinvigorate the town's *Avenue of Honour* in Anzac Avenue, in partnership with local communities exists.

Other street tree planting opportunities include creating shade and coherent landscapes along pathways leading into town and in and around the local school's parking zones.

The Tibrogargan residential estate located just outside the defined plan area contains a high number of vacant planting sites. Similarly, the streetscapes of Cobb & Co and Carriage Crescents in the residential estate south-west of the plan area would benefit from the utilisation of a wider species palette, with current plantings of wattle and bottle brush failing to make a substantial landscape impact.

Scenic amenity and views to Mount Tibrogargan to the west need to be considered in any local street tree planting programs. While the backdrop of Mount Beerburrum is very much a part of the visual amenity of the streets, the lack of overhead power, wide nature strips and numerous vacant sites present excellent *Adopt A Street Tree Program* opportunities.

Street tree planting strategies

Street tree plantings enhance and reinforce the natural character and forest feel of the locality.

Street tree species selections are predominately locally native.

Infilling and extending avenues of street trees on town approaches enhances the sense of arrival to, and identity of the town.

Under performing Crow's ash trees in town are investigated with alternate species potentially introduced for infill planting in the town centre.

Eucalypts form the dominant structure of natural character plantings (where space permits). Bribie Island pine are used to replace exotic pine specimens as required.

Flame trees and swamp bloodwood provide accent and colour to the townscape.

Bottlebrush and wattle trees growing in local streets are phased out through natural attrition and brush box are not introduced into any new areas in an effort to reduce dominance of the species in the plan area.

Camphor laurel trees are replaced with a substitute broad-leaved species (for example mango where space permits) through natural attrition.

Replacement species for the Anzac Avenue *Avenue of Honour* are developed in conjunction with the local community.

All new plantings are considerate of existing views to Mount Beerburrum and Mount Tibrogargan.

Street tree planting aligns with the *Beerburrum townscape strategy* (report date March 2002) and the *Beerburrum Road streetscape plan* (plan date August 2004).

Street tree palettes

Signature trees

Avenue trees (major thoroughfares)

- Caesalpinia ferrea* (leopard tree) (where existing only)
- Callitris columellaris* (Bribie Island pine)
- Flindersia australis* (Crow's ash)
- Flindersia bennettiana* (Bennett's ash)
- Flindersia xanthoxyla* (yellowwood)
- Lophostemon confertus* (brush box)
- Syzygium australe* (brush cherry)
- Syncarpia glomulifera* (turpentine)

Specimen trees for large spaces

- Agathis robusta* (Queensland kauri pine)
- Araucaria cunninghamii* (hoop pine)
- Corymbia citriodora* (lemon-scented gum)
- Eucalyptus cloeziana* (Gympie messmate)
- Eucalyptus seeana* (narrow-leaved red gum)
- Elaeocarpus grandis* (blue quandong)
- Mangifera indica* (mango) (where space permits)
- *See also *Locally native species for natural character features* palette

Accent and highlight trees

- Brachychiton acerifolius* (Illawarra flame tree)
- Brachychiton discolor* (lace bark)
- Corymbia ptychocarpa* (swamp bloodwood)
- Erythrina caffra* (African coral tree)

Trees for local streets

- Backhousia citriodora* (lemon myrtle)
- Brachychiton acerifolius* (Illawarra flame tree)
- Buckinghamia celcissima* (ivory curl)
- Cryptocarya glaucescens** (jackwood) (trial locations)
- Cupaniopsis anacardioides* (tuckeroo) (where existing)
- Cupaniopsis parvifolia* (small leaved tuckeroo)
- Elaeocarpus eumundii* (Eumundi quandong) (where avenue plantings exist)
- Flindersia xanthoxyla* (long jack/yellow wood)
- Grevillea hilliana** (white silky oak) (trial locations)
- Harpullia pendula* (tulipwood)
- Harpullia hillii* (blunt leaf tulipwood)
- Lophostemon confertus* (brush box) (where avenue plantings exist)
- Melaleuca viridiflora* (weeping broad-leaf paperbark)
- Podocarpus elatus* (brown pine)
- Sterculia quadrifida* (peanut tree)
- Syzygium australe* (brush cherry)
- Tristaniopsis laurina* 'Luscious' (water gum)
- Xanthostemon chrysanthus* (golden penda)

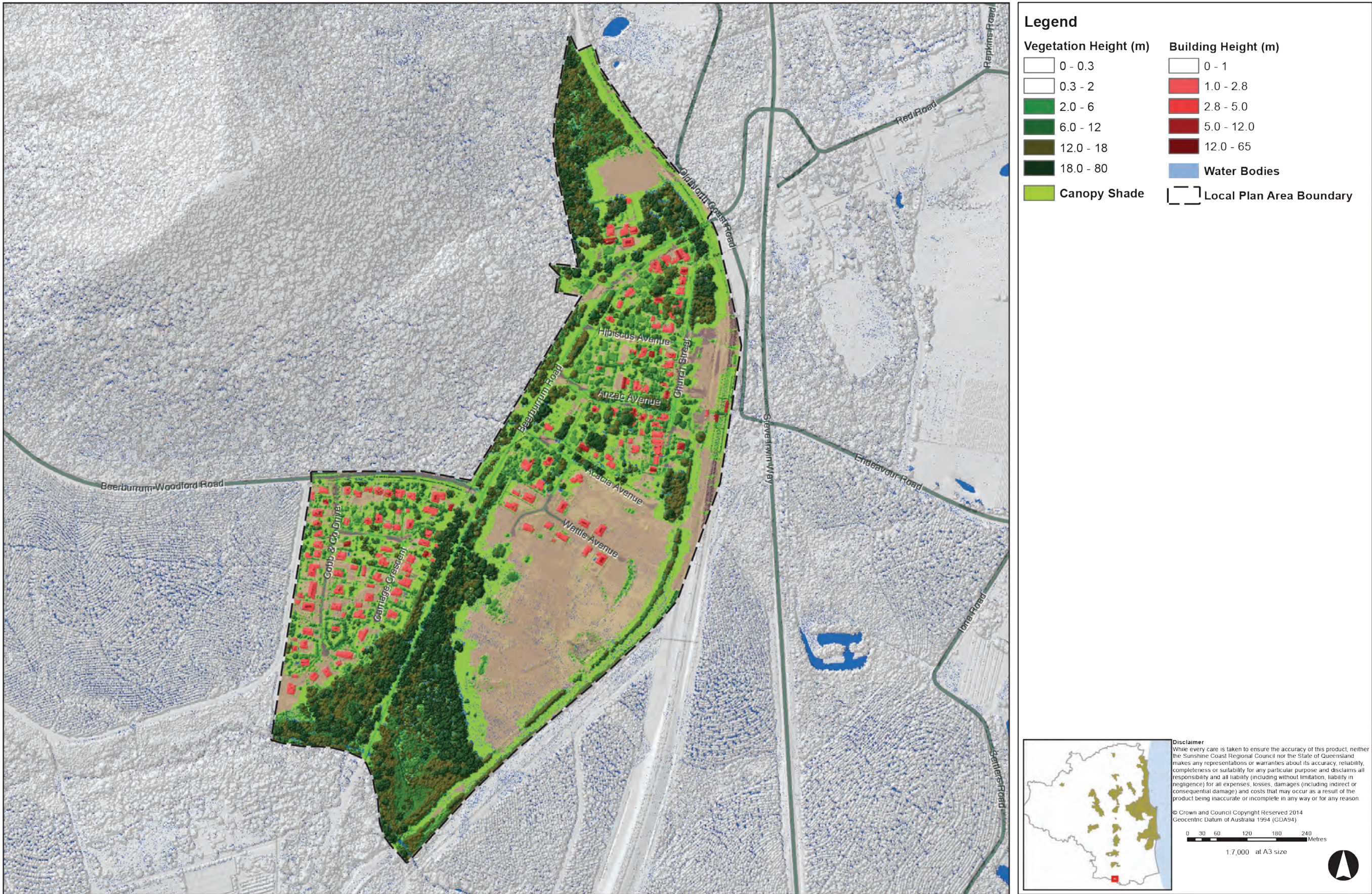
Locally native species for natural character features

Woodland/open forest species

- Acacia complanata* (long pod wattle)
- Acacia concurrens* (curracabah)
- Acacia leiocalyx* (early flowering black wattle)
- Allocasuarina littoralis* (black wattle)
- Angophora woodsiana* (smudgy apple)
- Corymbia gummifera* (red bloodwood)
- Corymbia intermedia* (pink bloodwood)
- Corymbia trachyphloia* (brown bloodwood)
- Eucalyptus acmenoides* (white mahogany)
- Eucalyptus curtisii* (plunkett mallee)
- Eucalyptus microcorys* (tallowwood)
- Eucalyptus pilularis* (blackbutt)
- Eucalyptus propinqua* (grey gum)
- Eucalyptus seeana* (narrow-leaved red gum)
- Eucalyptus siderophloia* (grey ironbark)
- Leptospermum leuhmanii* (Glass House Mountains tea tree)
- Lophostemon suaveolens* (swamp box)
- Melaleuca quinquenervia* (broad-leaved paperbark)
- Syncarpia glomulifera* (turpentine)

Foliage and Shade Cover

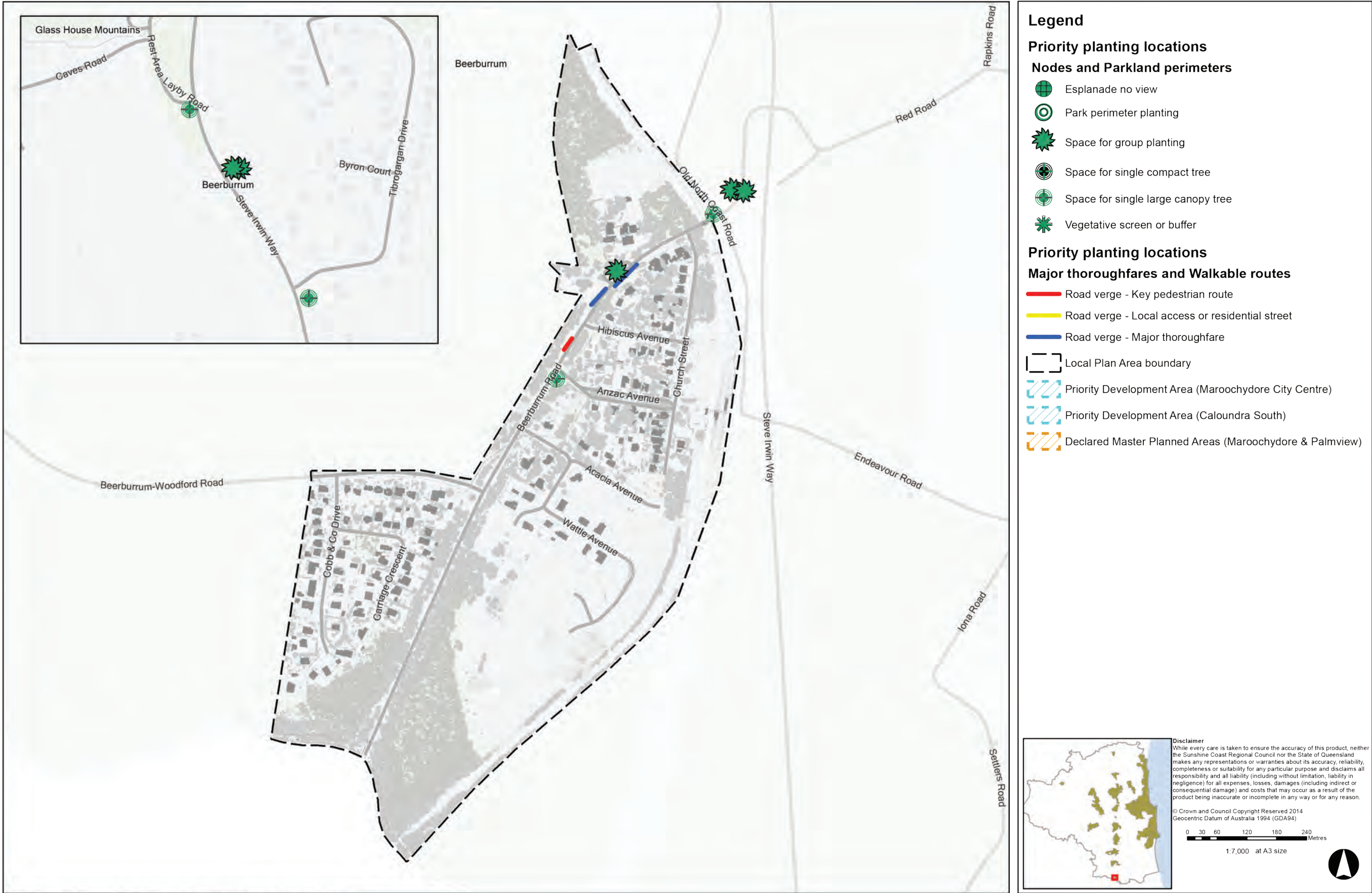
Beerburrum Local Plan Area



Path: F:\MapRequests\StreetTreeMasterPlan\Maps\HulkProducedMaps\FoliageShadeCover_MAPBOOK_Landscape_20160630.mxd

Priority Planting Plan

Beerburum Local Plan Area



Path: F:\MapRequests\StreetTreeMasterPlan\Maps\HulkProducedMaps\PPP_MAPBOOK_Landscape_Beerburum_20160628.mxd