



# WWS100i

## Quick Start Guide



# Table of Contents

Quick Start	2
1. Unpack	2
2. Charging the WWS100i	2
3. Setting up the Bluetooth Adaptor	2
4. Connecting the Scanner to a Bluetooth Device	2
Setup & Configuration	4
Factory Default	5
Check Version	5
Link Quality On/Off	5
Set Connection	5
Bluetooth SPP (Bluetooth COM)	6
Bluetooth HID (Keyboard)	6
Start and Stop Pin	6-7
Terminator	8
iPad/iPhone Toggle Keyboard	8

## Quick Start

### 1. Unpack

Open the box and remove all the pieces from their protective packaging.

### 2. Charging the WWS100i

You must charge the scanner for 4 hours before first using it.

To charge the scanner, plug the provided USB cable into the scanner and your local PC.

When the device is charging, the LED light on the top of the scanner will blink red.



### 3. Setting up the Bluetooth Adaptor

If you already have Bluetooth setup on your PC or device, please continue to the next step.

To setup Bluetooth on your PC you will need to insert the Bluetooth adapter into an available USB port. Windows will detect the adapter and install the required Microsoft Bluetooth software. If Windows does not detect the Bluetooth adapter, please remove the adapter and insert the CD with the adapter's Bluetooth software on it. Follow the instruction on the CD for installing the Bluetooth software.

### 4. Connecting the Scanner to a Bluetooth Device

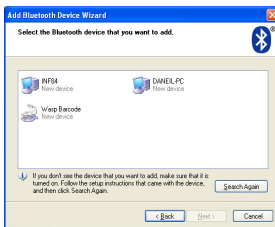
The scanner will connect to most Bluetooth devices that support HID connection. You will need to open your Bluetooth software and search for Bluetooth devices. The Bluetooth software can be found by clicking the Bluetooth symbol on the start bar near the computer time. If the Bluetooth symbol is not found, there could be a problem with the Bluetooth adapter installation.

Once you have the Bluetooth software open you will need to scan the Set Connection barcode (page 5). This will make the scanner ready to be detected by the Bluetooth software.

Note: These instructions are for XP users. For instructions on pairing a device using Win7, please refer to page 5 of the users manual



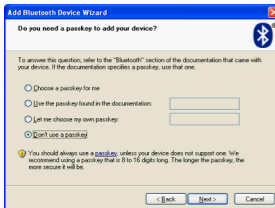
Check the “My device is setup and ready to be found.” and click Next.



The scanner will show up in the list of Bluetooth devices found. Select Wasp Barcode and click Next.

If Wasp Barcode does not show up in the available devices please check the following:

1. Make sure the scanner is on by pressing the trigger.
2. If you are using a pre-installed Bluetooth adapter, make sure the adapter supports HID.



The next step will ask you to setup a passkey for the device. By default the scanner will not have a passkey set. Please select “Don’t use a passkey” and click Next.

You can set a passkey later if you prefer, see Start/Stop Pin on page 6 for details.



The Complete Wizard screen appears. Just click Finish to complete.

Once the wizard is complete the scanner will show up as a Wasp Keyboard. Click OK to close the screen. You are now ready to use the WWS100i.

## Setup & Configuration

In order to configure Wasp WWS100i Cordless Pocket Barcode Scanner, you must familiarize yourself with the setup procedures on the following pages. The default settings of the scanners are identified on each page and clearly marked using an asterisk (\*). The default settings have been pre-programmed for the most common barcode configurations. Use the setup & configuration barcodes to customize the WWS100i Scanner settings. If you need to configure the Scanner, the default settings will be overwritten. All the pre-programmed settings are stored permanently in non-volatile memory.

In order to configure Wasp WWS100i Scanner, two basic steps need to be followed:

- (1) Locate the group that contains the options to be changed.
- (2) Scan the barcode representing the option to be changed.  
The scanner will sound two beeps.

## Factory Default

Use the Factory Default barcode to reset the scanner to the Default settings.



Factory Default

Scan the Check Version barcode to verify your current firmware's version number.



Check Version

## Link Quality On/Off

The Link Quality affects the transmission quality. When Link Quality is turned on (default setting), data transfer is more secure, but slower. If you notice that your transmissions to the host are too slow, you can try to turn the Link Quality setting to off.



Link Quality On



Link Quality Off

## Set Connection

Scan this barcode to break your current connection and enable your device to connect to a new Bluetooth host.



Set Connection

## Bluetooth SPP (Bluetooth COM)

The Bluetooth SPP (Serial Port Protocol) creates a virtual Bluetooth comport. This setting is not recommended. Only use this option if you have software capable of capturing data off of a comport.



Bluetooth SPP (Bluetooth COM)

## Bluetooth HID

Use this setting (on by default) to pair with most Bluetooth connections. Bluetooth HID works just like a keyboard.



Bluetooth HID

## Start and Stop Pin

Use the Start and Stop Pin barcodes when you are prompted for a password (Passkey) during Bluetooth pairing. To use this setting:

1. When prompted for a password, scan the Start Pin barcode.
2. Scan the appropriate numbers (provided on page 7) for your password.
3. Scan ENTER.
4. Scan the Stop Pin barcode.

Now the Pin is set and the scanner should pair to the PC. Test the connection by scanning a barcode from WordPad, NotePad or the equivalent and verifying the scan is correct.





Start Pin



Stop Pin



1



2



3



4



5



6



7



8



9



0



ENTER

## Terminator

The 'Terminator' option is used to specify the end-of-text message and is primarily used to denote the end of the barcode value.



CR \*



TAB



None



Space



LF



ESC



CR + LF

## iPad/iPhone Toggle Keyboard

Scan this barcode to display or hide the keyboard when connect to an iPad or iPhone.



iPad/iPhone Toggle Keyboard



# **Wasp Barcode Technologies**

1400 10th Street

Plano, TX 75074

[www.waspbarcode.com](http://www.waspbarcode.com)