



Want to be part of the future of radiology?

I-MED Radiology offers a wide range of career opportunities, together with great benefits, flexibility, and a diverse, supportive and caring working environment.



**I-MED Radiology
Network**

Comprehensive care. Uncompromising quality.



Discover I-MED Radiology

Making a difference for our patients and communities

Our clinics offer a full range of scans and diagnostic imaging services including x-ray, CT, MRI, nuclear medicine, ultrasound, mammography, PET, cardiac imaging and interventional procedures.

We operate 270 clinics and perform over 6 million patient procedures each year, making us one of the largest providers of medical imaging in the world.

Join I-MED to become part of a collegiate and welcoming team with more than 4,500 people across Australia and New Zealand.

You are welcome here

I-MED seeks to recognise, promote, and celebrate the diversity and inclusion of our workplace, for the benefit of our people, colleagues, and patients. We are committed to bringing together the most diverse set of backgrounds and perspectives and enabling the full potential of our people.

We understand how important it is to celebrate what makes each and every member of our Network unique, encourage differences, and promote fair opportunities for all. We work directly with our people through our Diversity, Equity and Inclusion Committee, championing inclusive change across our network.

Working together. Innovation. Compassion. Connection. Quality.

These are the values that set us apart, along with our people, our state-of-the-art technology, our innovative systems, and our imaging and diagnosis. So much so, that we are the provider of choice for more specialists, GPs, hospitals, and allied health professionals around the country.

Our purpose

We have a vision – to be the most respected and trusted medical imaging specialists in the world. That’s our vision, underpinned by our purpose – to save lives and reduce uncertainty. At I-MED our patients are at the centre of everything we do.

“My motivation to join the Gender Sub-Committee stems from my deep commitment to gender equality and my passion for empowering female leaders. I recognise the importance of breaking down gender biases and barriers, especially in the context of Radiology and the medical industry. Being a part of this committee has not only enhanced my personal and professional skills, but also afforded me the opportunity to collaborate on meaningful projects with colleagues from diverse roles across the organisation.”

Laura Richards
DEI Gender Sub-Committee



Careers @ I-MED

We will support your career journey through our technical and leadership pathways.



Our Professions

- Radiologists
- Sonographers
- Radiographers
- Nuclear Medicine Technologists
- Medical Administrators / Receptionists
 - Medical Imaging Assistants
 - Registered Nurses
- Support Services including; Information Technology, Finance, Human Resources, Training, Contact Centres, Marketing and Sales, Data Analytics, Project Management and much more

Our Leadership Pathways

- Office Managers and second in charge
 - Transformation projects and secondment opportunities
 - Chief Radiographer/Medical Imaging Technologist
 - Clinic Leader
 - Regional Technical Managers
- Regional Administration Managers
 - Contact Centre Team Leader
 - Contact Centre Manager
 - Regional Managers & Operations Managers
 - General Managers
 - Representatives on the National Clinical Management Committee
 - Representatives on our Diversity, Equity and Inclusion Sub-Committees

Our Technical Training Pathways

- Ultrasound
 - PET/CT
 - MRI
- Advanced CT including CTCA's
 - Interventional procedures
 - Fellowships
- Business/financial acumen courses
- National clerical training programs

Internal career opportunities

Discover Australia and New Zealand with us. Our extensive clinic network in both metro and regional areas offers widespread opportunities to discover amazing new locations through internal opportunities. We actively promote both short term, long term and career building secondments and promotions for our people.

Be rewarded for great work

We offer a competitive salary as well as generous flexible leave entitlements.

Training and ongoing skill development

We provide our people with fantastic opportunities for ongoing development of knowledge, skills, and expertise within a peer supported environment. Our I-MED Aspire learning portal is an immersive learning platform designed to complement clinical learning CPD opportunities and ongoing training for all our people. We also offer various national conferences, local training events and career development opportunities - including our industry leading internal Business Acumen program.



Why choose I-MED Radiology

Meaningful and challenging work

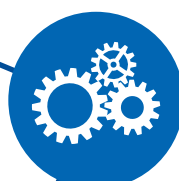
Join us and experience a dynamic and stimulating working environment with access to an interesting case mix and range of modalities.

You become part of a quality, focused team

Our people are committed to delivering excellence in patient care.

Our commitment to you

We are committed to our people and providing them with the opportunity to grow their career through a positive and supportive culture.





Health

Look forward to flexible private health cover options to suit your needs. We also offer I-MED Radiology services for you and your immediate family to access discounts on medical imaging services when required.



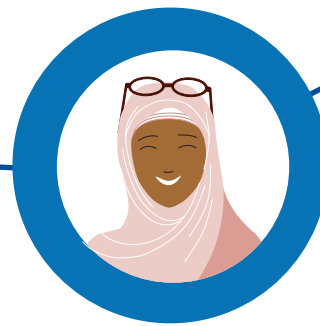
Wellbeing

Our Employee Assistance Program provides access to a range of support services, including counselling sessions. You will also have access to our exclusive health and wellbeing portal and programs. Our corporate health and fitness program provides access to a wide range of local health, fitness and leisure facilities across Australia.



Flexibility

At I-MED, we recognise and support the need for flexible working arrangements to help our employees achieve a better work-life balance. This can include adjustments to work hours, modifications to work patterns, or the ability to work remotely for some of our people.



Growth

Whether you're a trainee or an experienced professional, we support your passion to grow in your role or explore other areas of interest. Our presence in large hospitals, ongoing expansion of clinics into new metro and regional areas, and continual investment in upgrading equipment and technology provide our employees with a progressive and rewarding workplace.



Family support

We provide flexible parental leave options available to support working families with 8 weeks' paid leave for primary carers, and 2 weeks' paid leave for non-primary carers.



Financial

We provide a range of special banking discounts and packages from our financial banking partners. I-MED employees may benefit from salary packaging options including vehicle novation, airline lounge memberships, financial or taxation advice and income protection insurance.



Retail

Enjoy a variety of discounts from our partners including Dell electronics, a range of corporate vehicles and Hertz car hire.




Great benefits enhance your I-MED experience

We offer a wide range of benefits to support our people.



Hear from our people



What I love most about working for I-MED is the encouragement to learn new things.

When I joined I-MED in Armidale, NSW, I had no background in radiology or working in medicine. I-MED supported me to become a Clinic Leader, managing both technical and administrative staff.

In 2015, I took part in a year-long I-MED management training program with financial and business training under senior management mentors. Additionally, I had the chance to work in another region and help recruit and train staff.

I now manage the medical typing teams across NSW, ACT, WA and regional areas. Working for I-MED has allowed me to seek out new career challenges and kept my job interesting.

Chrys Woodyard
Medical Typist Manager



I joined I-MED to train in a new modality, then worked at various locations, including regional Victoria, to improve my qualifications.

Over the years I-MED has offered me many opportunities to apply for roles to expand my knowledge. I have gained experience as a Tutor Radiographer, a Chief Medical Imaging Technologist, Sonographer Supervisor and Ultrasound Co-ordinator.

I'm extremely fortunate that I-MED has provided me with multiple opportunities to advance my career across different focus areas, and I was very proud to be appointed as the first female metro Regional Manager in Melbourne.

I have always felt supported throughout all stages of my personal and professional journey at I-MED.

Angela Duncan
Senior Regional Manager



During my time at I-MED, I have worked with a diverse range of patients, including those from different cultural backgrounds and with varying medical conditions.

I have also worked alongside talented and experienced healthcare professionals to provide the best possible patient care, learning how to work as part of a multidisciplinary team.

I-MED has a positive workplace culture that values employee well-being and work-life balance. As a trainee sonographer, I work in a supportive and collaborative environment that promotes personal and professional growth. Working at I-MED has provided me with an excellent foundation for my career with opportunities for growth and development.

Rajeshwari Kangle
Sonography Trainee



The future of AI is now

I-MED has joined forces with Harrison.ai, a healthcare artificial intelligence company, to launch Annalise.ai through which our radiologists and AI engineers are developing world-leading prediction engines to improve efficiency, accuracy, and safety in radiologists' workflows.



A spotlight on teleradiology

I-TeleRAD – our teleradiology business – reports for more than 170 hospitals around Australia and New Zealand, assisting them with emergency and acute radiology. There is a constant flow of routine and overflow reporting, second opinions on complex cases and sub-specialist work. The importance of the work we do is reflected in the demand for our services from hospitals around the country.

Our commitment to the community

Giving back to the community when there's an important need is a priority at I-MED. We are committed to assisting those in need and encourage our people to join with us whenever they can.

In recent years we have proudly supported Breast Cancer Trials, Heart of Australia, Red Cross Flood Relief and Radiology Across Borders. In addition, our people make regular contributions to a number of charity partners through our workplace giving program and by participating in Movember.

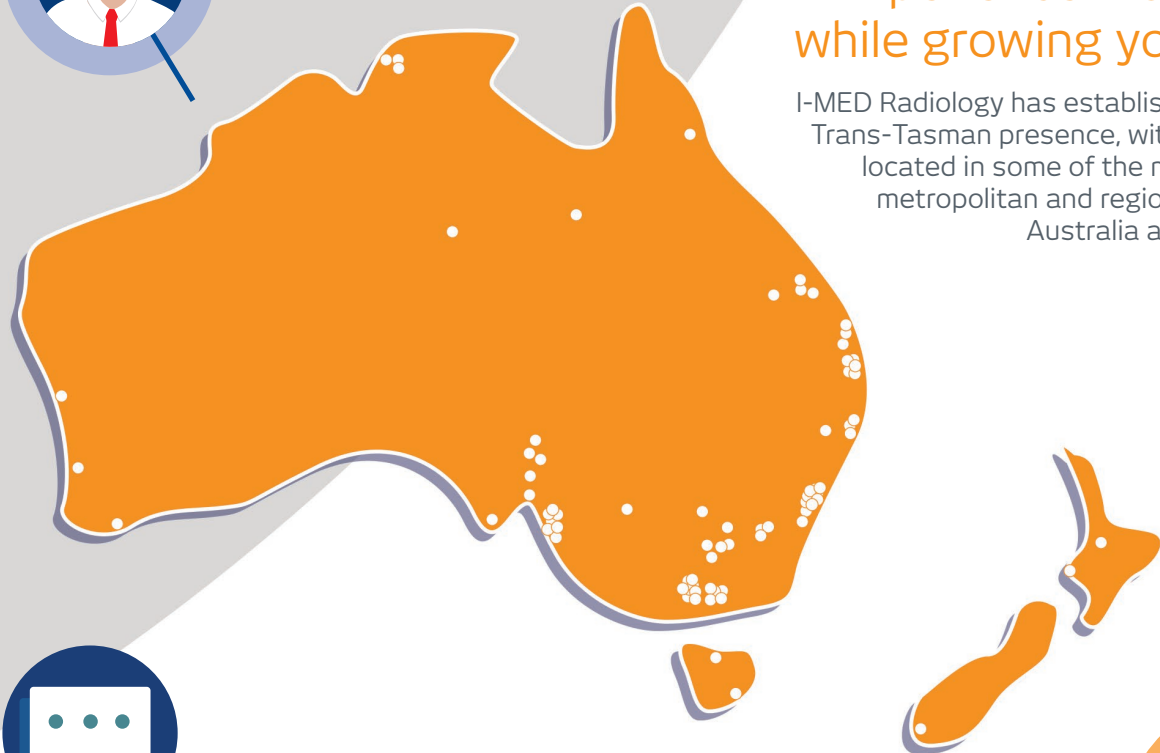


Watch how I-MED is using AI to improve patient outcomes



Experience more places while growing your career

I-MED Radiology has established a significant Trans-Tasman presence, with multiple clinics located in some of the most picturesque metropolitan and regional areas across Australia and New Zealand.



Come and work with us

At I-MED Radiology, you will have a career, not just a job. Whether you thrive with a busy case load, or are seeking more flexible working hours, we have a range of locum and permanent career options that will help you build your career and work/life balance.

From world-renowned radiologists, to our dedicated and caring clinic teams, or skilled support staff - there's a role for you at I-MED.

If you care about making a difference and are ready to be part of an incredible team delivering exceptional patient care, please contact our careers team at careers@i-med.com.au

i-med.com.au



**I-MED Radiology
Network**

Comprehensive care. Uncompromising quality.

