

Sunlighten Sauna Cover



INSTALLATION GUIDE

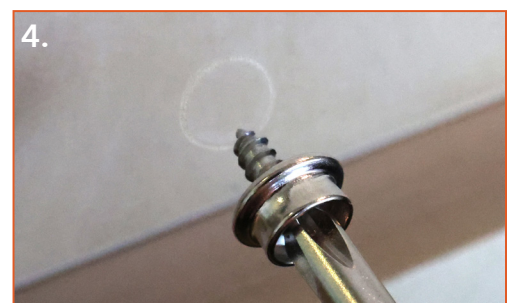
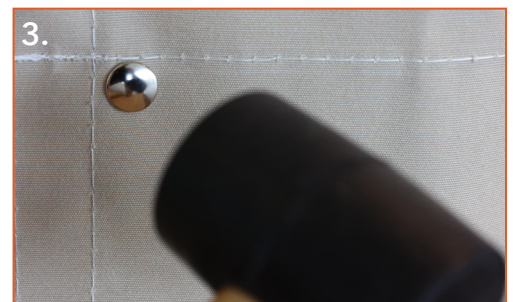
Each water-resistant sauna cover is custom made with quality fabric; perfect for the great outdoors. Installing your sauna cover is easiest with more than one person.

The plastic thermal Aqualon liner, included with the canvas cover, is water-resistant and transparent. Lift the plastic thermal liner over the sauna and pull it over the top (1).

In addition to using the thermal liner layer, you want to create a convex (2) surface on top of your sauna to help any condensation or elements to roll off the top, rather than accumulate. To do this, place a small object the size of a coffee can on top of the plastic thermal liner before adding the outer canvas cover.

Now, with the canvas cover unzipped, lift it over the sauna and thermal liner and pull it over the top. Rotate to be sure its orientation has both zippers aligned with the sauna door.

Secure the thermal liner and reinforce stability against windy conditions by using the set of loose snaps lining the canvas with their corresponding snaps on the canvas. After installing the cover, close it tight around the wood, and lightly tap each snap with a hammer (3). This will leave an indentation in the wood. For each indentation, take a loose snap and screw at the indentation (4).



When in use, to create an opening in the canvas liner for your sauna door, undo both zippers on either side of the door and roll the now loose door flap up, wrapping and tying (5) it with the straps hanging from the top of the canvas' opening.

Remove the thermal liner and canvas cover from the unit at least twice a year during temperate weather to inspect for holes, tears, and the structural integrity of both.



LIMITED WARRANTY

The limited warranty covers the fabric becoming unserviceable because of loss of color or strength from normal usage and exposure conditions, including sunlight, mildew, and atmospheric chemicals.* Consumer is responsible for normal care and cleaning of the fabric. This warranty covers fabric only and is for 1 year.

*If sauna is placed outdoors, failure to utilize the .004 plastic sheet supplied as additional water protection for your sauna will void your warranty. The fabric used for the roof of the waterproof cover is resistant to water penetration; however, it is sewn to the acrylic canvas sides. It is required to place the plastic sheet included directly over the sauna roof prior to installing the cover and placing an object on the sauna roof to give the fabric elevation for water to run off as further protection. The cover should remain on the sauna at all times (including while on and in-use) to avoid water damage and void the warranty.

CLEANING INSTRUCTIONS

Sauleda® Marine Canvas - Use one cup of non-soap detergent per gallon of water. Wet the surface and apply solution with a soft brush and scrub gently. Do not use bleach.

AQUALON - Use a mild soap solution (such as Ivory) rinse thoroughly with clear water. Do not use bleach.