

The image is a vertical collage. At the top center is the University of Sussex logo, consisting of the letters 'US' in a large, white, serif font, with 'UNIVERSITY OF SUSSEX' in a smaller, white, sans-serif font below it. The background is divided into three vertical panels. The left panel shows a young man with dark hair and glasses, wearing a bright yellow hoodie, looking directly at the camera. The middle panel shows a young woman with dark, curly hair and a purple headband, smiling broadly. The right panel shows a young man with dark hair and glasses, wearing a blue button-down shirt, smiling. A dark blue horizontal band with the text 'SUCCEED IN THE WORLD' in white, bold, sans-serif font spans across the middle of the three panels. At the bottom of the collage, the text 'INTERNATIONAL STUDY CENTRE PROSPECTUS' and the website 'sussex.ac.uk/isc' are displayed in white, sans-serif font.

US  
UNIVERSITY  
OF SUSSEX

**SUCCEED IN THE WORLD**

INTERNATIONAL STUDY  
CENTRE PROSPECTUS  
[sussex.ac.uk/isc](http://sussex.ac.uk/isc)

SUCCEED IN THE WORLD

# WELCOME

I am delighted that you are considering enrolling at the International Study Centre (ISC) here at the University of Sussex. Your ISC studies are carefully designed to prepare you for our Sussex undergraduate or postgraduate degree programmes.

As you will discover, we are a warm and welcoming community, with students and staff from across the globe, enjoying our beautiful green campus close to the vibrant coastal city of Brighton and Hove.

I look forward to seeing you here.

Professor Sasha Roseneil  
Vice-Chancellor  
University of Sussex

At the University of Sussex International Study Centre, we help you to take the important next step towards academic success. You will have the complete UK student experience: classes with inspirational and creative tutors, support from our dedicated student experience team, and opportunities to make lifelong friends from all over the world.

You'll find us 10 minutes from the sunny seaside resort of Brighton, surrounded by the South Downs National Park, and with easy access to London.

We look forward to welcoming you very soon!

Martin Torjussen  
Centre Director  
University of Sussex  
International Study Centre

SUCCEED IN THE WORLD



## CONTENTS

Experience a life-changing education **2** Brighton, a city that excites **4**  
Campus life that inspires **6** Your International Study Centre **8**  
Prepare for your future career **10** International Foundation Year **12**  
International Year One **16** Extended International Year One **20**  
Pre-Masters Programme **22** Support that matters **26**  
Accommodation that feels like home **28**



SUCCEED IN THE WORLD

# EXPERIENCE A LIFE-CHANGING EDUCATION



## RESEARCH THAT DELIVERS

Research is the pathway to progress at the University of Sussex. It is internationally recognised for drawing together leading academics from different disciplines – an approach that delivers the most powerful and meaningful results.

## TEACHING THAT COUNTS

Teachers and professors deliver courses designed to inspire you, helping you to develop skills that make your education count, and giving you the confidence to make a mark in your chosen field. Teaching at Sussex is underpinned by research, so you'll be at the forefront of knowledge in your subject.

## LOCATIONS THAT INSPIRE

The Sussex campus has a unique combination of tranquillity and energy, surrounded by a National Park. You can explore the beautiful hills and woodlands of the South Downs whenever you want to.

Furthermore, it is only 10 minutes by train from Brighton – a vibrant seaside city famous for its pier, beach, shops and thriving art and music scenes.

## COMMUNITY THAT WELCOMES

Each year, Sussex gains almost 6,000 new international students from more than a hundred countries. The result is a genuinely multicultural campus that helps you see the world, and your future, in a new way.

**16th**  
in the UK  
for employment outcomes  
(out of 90 Higher  
Education institutions)

*QS World University Rankings 2025*

**8th**  
in the UK  
for sustainability  
(out of 91 ranked institutions)

*QS World University Rankings 2025*

**1st**  
in the world  
for Development Studies

*QS World University Rankings by Subject 2024*

**89%**  
of the University research  
is considered “world leading  
or internationally excellent”

*Research Excellence Framework 2021*





SUCCEED IN THE WORLD

# BRIGHTON, A CITY THAT EXCITES

## **CREATIVE AND VIBRANT**

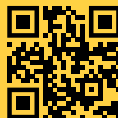
University of Sussex is a short train ride from Brighton, one of the UK's most vibrant locations. The city is famous for its beautiful seafront, unique shops and markets, and thriving music and art scenes. Brighton also has more than 400 restaurants and cafés, serving cuisine from around the world with food festivals taking over the streets throughout the year. Each year, millions of inquisitive tourists visit this inspirational city to experience its friendly and creative atmosphere.

## **SEASIDE ESCAPE**

Brighton's pebble beach is perfect for meeting up with friends for fish and chips, or simply enjoying the fresh air and sunshine. You can go for a walk along the promenade or have a go at water sports, such as stand-up paddle boarding. The city's Palace Pier, dating back to 1899, is full of charm with its colourful fairground rides, games arcades and food stalls.

## **BEAUTIFUL COUNTRYSIDE**

Brighton is surrounded by the South Downs National Park. This means that you'll have the opportunity to enjoy stunning views and go for peaceful walks. If you're feeling adventurous, you can also try hiking, mountain biking or even paragliding.



More information  
[isc.sussex.ac.uk/why-sussex/  
brighton](https://isc.sussex.ac.uk/why-sussex/brighton)

# CAMPUS LIFE THAT INSPIRES

## PERFECT LOCATION

The Sussex campus is in a unique location – surrounded by beautiful and peaceful countryside, but also only a short distance from the lively city of Brighton. If you want to explore the rest of the UK, central London is within an hour of Brighton and Gatwick Airport is just 30 minutes away by train.

## EVERYTHING YOU NEED

If you are keen to stay closer to campus, at Sussex, you can. You'll find everything you need to live and study comfortably here, from modern classrooms and labs to cosy coffee shops, bars and restaurants. There's also a supermarket, launderette, Post Office, pharmacy, health centre and a whole range of sports and fitness facilities.

## RELAX AND SOCIALISE

The University of Sussex Students' Union arranges fun student events and activities throughout the year. There's plenty to see and do, from comedy and quizzes to live music and student-led DJ nights.

**10**  
minutes  
from the campus  
to Brighton  
by train

**30**  
minutes  
from Brighton  
to Gatwick Airport  
by train

**1**  
hour  
from Brighton  
to central London  
by train



More information  
[isc.sussex.ac.uk/why-sussex/  
campus-life](https://isc.sussex.ac.uk/why-sussex/campus-life)







**YOUR  
INTERNATIONAL  
STUDY CENTRE**

The University of Sussex International Study Centre will help you develop your confidence, boost your English language skills and give you the academic knowledge you need to succeed at Sussex, and beyond.

### TAKE THE FIRST STEP

Courses at the International Study Centre will prepare you for your undergraduate or postgraduate degree at the University at Sussex.

Choose from:

- International Foundation Year: prepares you to start the first year of an undergraduate degree
- International Year One: prepares you to join the second year of an undergraduate degree
- Extended International Year One in Business and Management: prepares you to enter the second year of selected undergraduate business degrees
- Pre-Masters Programme: prepares you to start a postgraduate degree

### SETTLE IN

We are committed to helping you have an unforgettable experience at Sussex. Our friendly staff at the International Study Centre will be on hand to provide support and advice, and we'll organise a range of exciting activities to help you get used to living in the UK. You will also have access to university facilities, so you can get involved with campus life from day one.

### STAY ON TRACK

Our tutors are experts in teaching ambitious international students like you. We will review your progress on an ongoing basis to ensure that you are developing to the best of your ability. We will tailor our support to match your individual needs, encourage you to reach your goals and help you make your future.

### BUILD YOUR CONFIDENCE

You will learn in a supportive environment that offers small class sizes and individual tutor attention. We will develop your confidence and introduce you to university style assessment and teaching, so that you know exactly what to expect when you start your degree. You will take part in seminars, tutorials and lectures, learn how to give effective presentations and take part in classroom discussions.

### FOCUS ON YOUR CAREER

We know that you may already be thinking about your future career, which is why we have integrated Skills for Success into our academic courses at the International Study Centre. We will guide you towards making the right choices and give you the tools you need to stand out in the competitive graduate job market.

**94.8%**  
of students who completed  
their ISC course were offered  
a place to study at the  
University of Sussex  
in 2023



More information  
[isc.sussex.ac.uk/about-the-isc](https://isc.sussex.ac.uk/about-the-isc)



# PREPARE FOR YOUR FUTURE CAREER



At the International Study Centre, we care about your academic success – as well as your career once you graduate.

With your future career in mind, we have integrated a variety of employability activities into our academic courses at the International Study Centre. These employability activities are designed to give you a head start in today's competitive graduate employment market by helping you become a confident, highly-skilled and employable graduate.

All activities are tailored to your level of study, whether you are preparing for undergraduate or postgraduate study. With our support, you will identify your strengths, develop your skills for success and focus on areas for improvement, enabling you to maximise your chances of success at the University of Sussex and achieve your future goals.



“I feel more confident and comfortable with my future career because I've developed the skills that will help me progress.”

**Alison from Peru**

Studied International Foundation Year in Business, Humanities, Science and Engineering



More information  
[isc.sussex.ac.uk/about-the-isc/careers](https://isc.sussex.ac.uk/about-the-isc/careers)



“

The benefit of studying at the International Study Centre is they prepare you for university. So when you start your course you have an idea on how to take notes, and writing and reading.”

**Rehab from Saudi Arabia**

Studied International Foundation Year in Business, Humanities, Science and Engineering  
Progressed to BSc (Hons) Biomedical Science

# INTERNATIONAL FOUNDATION YEAR

## GENERAL ENTRY REQUIREMENTS

### ACADEMIC

Good high school graduation grades or equivalent

### ENGLISH LANGUAGE

Academic IELTS for UKVI 5.0 overall (minimum 5.0 in writing) or equivalent

### AGE

Applicants must turn 18 by the 1st of September of the year they are due to complete their ISC course and progress

## COURSE FACTS

### ENTRY DATES

September, November (Enhanced Induction) or January

### LENGTH

Two semesters

### STRUCTURE

A variety of academic modules plus Academic English Skills

## COURSE BENEFITS

- Option to change your pathway and/or progression degree
- Access to a wide range of progression degrees
- Teaching style mirrors that of the University, preparing you for undergraduate study

## CHOOSE YOUR SUBJECT ROUTE

- Business, Accounting and Economics
- Social Sciences with Maths
- Social Sciences and Law
- Film and Media
- Finance and Technology (FinTech)
- Life Sciences
- Medicine
- Psychology
- Computer Science
- Engineering, Maths and Physics
- Product Design

## YOUR ASSESSMENT

You'll be assessed through many different activities, which may include exams, seminar discussions, group projects, presentations, essays, practical reports and software exercises, depending on your subject route.

## IMPROVE YOUR ENGLISH

If you do not meet the English language requirements to study the International Foundation Year, you can improve your level of English by studying our English language course delivered online or enrolling for the Language Lift course.

**1st**  
**in the world**  
**for Development Studies**

*QS World University Rankings  
by Subject 2024*

**=10th**  
**in the UK**  
**for Psychology**

*ShanghaiRanking Global Ranking  
of Academic Subjects 2023*



More information  
[isc.sussex.ac.uk/international-  
foundation-year](http://isc.sussex.ac.uk/international-foundation-year)



## BUSINESS, ACCOUNTING AND ECONOMICS

Our Business, Accounting and Economics pathway prepares students for their first year of undergraduate studies at the University of Sussex.

### MODULES

- Academic English Skills
- Media, Communication and Society
- Applications of Maths
- Accounting
- Business Management
- Economics
- Marketing
- Organisational Behaviour

### PROGRESSION DEGREES

Accounting and Finance  
BSc (Hons)<sup>^</sup>  
Banking and Digital Finance  
BSc (Hons)<sup>^</sup>  
Business and Management Studies  
BSc (Hons)<sup>^</sup>  
Economics Management Studies  
BSc (Hons)  
Finance and Business BSc (Hons)<sup>^</sup>  
International Business BSc (Hons)<sup>^</sup>  
Marketing and Management  
BSc (Hons)<sup>^</sup>  
Marketing and Management with  
Psychology BSc (Hons)<sup>^</sup>



#### More information

For a full list of progression degrees and further information, visit [isc.sussex.ac.uk/international-foundation-year](http://isc.sussex.ac.uk/international-foundation-year)

## SOCIAL SCIENCES WITH MATHS

The Social Sciences with Maths pathway prepares students for their first year of undergraduate studies at the University of Sussex.

### MODULES

- Academic English Skills
- Media, Communication and Society
- Applications of Maths
- Criminology
- Economics
- English Legal System
- International Relations and International Development
- Politics

### PROGRESSION DEGREES

Economics BA (Hons)<sup>^</sup> or  
BSc (Hons)<sup>^</sup>  
Economics and Finance BSc (Hons)  
Economics and International  
Development BA (Hons)  
Geography BA (Hons) or BSc (Hons)  
Geography and Anthropology  
BA (Hons)  
Geography and International  
Development BA (Hons)  
Geography and International  
Relations BA (Hons)  
Geography with a Language  
BA (Hons)  
Geography, Sustainable  
Development and Climate Change  
BSc (Hons)  
Law with Business and Management  
LLB (Hons)  
Philosophy, Politics and Economics  
(PPE) BA (Hons)

## SOCIAL SCIENCES AND LAW

This pathway prepares students and leads to related undergraduate degrees at the University of Sussex.

### MODULES

- Academic English Skills
- Media, Communication and Society
- Criminology
- Economics
- English Legal System
- International Relations and International Development
- Politics

### PROGRESSION DEGREES

Anthropology with a Language  
BA (Hons)  
Art History BA (Hons)<sup>^</sup>  
Childhood and Youth: Theory and  
Practice BA (Hons)  
Criminology and Psychology  
BA (Hons)  
History and International Relations  
BA (Hons)  
Geography and International  
Relations BA (Hons)  
International Relations and  
Development BA (Hons)  
Law with Criminology LLB (Hons)  
Law with Politics LLB (Hons)  
Philosophy and Sociology  
BA (Hons)  
Politics and International Relations  
BA (Hons)  
Sociology with Media Studies  
BA (Hons)

<sup>^</sup>Programme is available with an optional professional placement year.

## FILM AND MEDIA

The Film and Media pathway leads to a list of undergraduate degrees specialising in Film and Media, the pathway prepares students to join their first year of studying at University of Sussex.

### MODULES

- Academic English Skills
- Media, Communication and Society
- Screen Studies
- Global Cinemas
- Creative Media Technologies: Digital Video
- Creative Media Technologies: Photography
- Media Representation

### PROGRESSION DEGREES

Art History and Film Studies BA (Hons)  
 Drama and Film Studies BA (Hons)  
 Film Studies BA (Hons)  
 Filmmaking BA (Hons)  
 Liberal Arts BA (Hons)  
 Media and Communications BA (Hons)  
 Media and Journalism BA (Hons)  
 Media Production BA (Hons)  
 Sociology with Media Studies BA (Hons)

## FINANCE AND TECHNOLOGY (FINTECH)

This pathway offers the progression degree option to study Finance and Technology (FinTech) BSc (Hons) at University of Sussex.

### MODULES

- Academic English Skills
- Media, Communication and Society
- Applications of Maths or Pure Maths 1
- Accounting
- Algorithms and Data Structures
- Object Oriented Programming
- Economics

### PROGRESSION DEGREES

Finance and Technology (FinTech) BSc (Hons)

## MEDICINE

This pathway offers the progression degree option to study Bachelor of Medicine Bachelor of Surgery (BM BS) at Brighton and Sussex Medical School.

### MODULES

- Academic English Skills
- Prepare for Medicine
- Pure Maths 1
- Biochemistry and Cell Biology
- Genetics, Ecology and Physiology
- Organic Chemistry and Structural Theory
- Physical and Quantitative Chemistry

### PROGRESSION DEGREES

Bachelor of Medicine Bachelor of Surgery BM BS\*\*

## LIFE SCIENCES

The Life Sciences pathway leads to a list of undergraduate degrees specialising in Life Sciences, at University of Sussex.

### MODULES

- Academic English Skills
- Foundations of Science or Prepare for Medicine
- Pure Maths 1 or Applications of Maths
- Biochemistry and Cell Biology
- Genetics, Ecology and Physiology
- Organic Chemistry and Structural Theory
- Physical and Quantitative Chemistry

### PROGRESSION DEGREES

Biochemistry MSci or BSc (Hons)\*  
 Biology MSci or BSc (Hons)  
 Biomedical Science MSci or BSc (Hons)  
 Chemistry MChem\* or BSc (Hons)  
 Ecology and Conservation MSci or BSc (Hons)  
 Genetics MSci or BSc (Hons)  
 Neuroscience MSci or BSc (Hons)  
 Neuroscience with Psychology BSc (Hons)  
 Zoology MSci or BSc (Hons)

\*Programme is available with an optional industrial placement year.

\*\*Please note that progression is conditional upon a number of requirements including successful interview, BioMedical Admissions Test (BMAT) and achieving 75% in all academic subject modules. Please visit the website for complete progression requirements.

## ENGINEERING, MATHS AND PHYSICS

The Engineering, Maths and Physics pathway prepares students for their first year of undergraduate studies at the University of Sussex.

### MODULES

- Academic English Skills
- Foundations of Science
- Pure Maths 1
- Pure Maths 2
- Physics Fundamentals 1
- Physics Fundamentals 2
- Mechanics

### PROGRESSION DEGREES

Astrophysics MPhys  
 Electrical and Electronic Engineering BEng (Hons)\* or MEng\*  
 Mathematics BSc (Hons) or MMath  
 Mathematics with Economics BSc (Hons) or MMath  
 Mathematics with Finance BSc (Hons) or MMath  
 Mechanical Engineering BEng (Hons)\* or MEng\*  
 Mechanical Engineering with Robotics BEng (Hons)\* or MEng\*  
 Physics BSc (Hons)\* or MPhys\*  
 Physics with Astrophysics BSc (Hons) or MPhys  
 Robotic and Mechatronic Engineering BEng (Hons)\* or MEng\*  
 Sustainable Automotive Engineering BEng (Hons)\* or MEng\*  
 Theoretical Physics BSc (Hons) or MPhys

## PSYCHOLOGY

The Psychology pathway prepares students for their first year of undergraduate studies at the University of Sussex.

### MODULES

- Academic English Skills
- Foundations of Science
- Applications of Maths or Pure Maths 1
- Research Methods in Psychology
- Principles of Psychology
- Biological and Cognitive Psychology
- Social and Developmental Psychology

### PROGRESSION DEGREES

Psychology BSc (Hons) ^  
 Psychology with Clinical Approaches BSc (Hons)

## PRODUCT DESIGN

This pathway offers the progression degree option to study Product Design BA (Hons) or BSc (Hons) at University of Sussex.

### MODULES

- Academic English Skills
- Media, Communication and Society
- Materials and 3D Modelling
- Creative Media Technologies: Digital Video
- Creative Media Technologies: Photography
- Media Representation
- Databases and Internet Computing
- Applications of Maths

### PROGRESSION DEGREES

Product Design BA (Hons) or BSc (Hons)

## COMPUTER SCIENCE

The Computer Science pathway leads to a list of undergraduate degrees specialising in Computer Science at University of Sussex.

### MODULES

- Academic English Skills
- Foundations of Science
- Applications of Maths or Pure Maths 1
- Object Oriented Programming
- Algorithms and Data Structures
- Databases and Internet Computing
- Computer Systems

### PROGRESSION DEGREES

Computer Science MComp\* or BSc (Hons)\*  
 Computer Science and Artificial Intelligence BSc (Hons)\*  
 Computing for Business and Management BSc (Hons)\*  
 Computing for Digital Media and Games BSc (Hons)\*

\*Programme is available with an optional professional placement year.

\*Programme is available with an optional industrial placement year.



**More information**  
 For a full list of progression degrees and further information, visit [isc.sussex.ac.uk/international-foundation-year](http://isc.sussex.ac.uk/international-foundation-year)



# INTERNATIONAL YEAR ONE

## GENERAL ENTRY REQUIREMENTS

### ACADEMIC

Good high school graduation grades or equivalent, plus one year of further study

### ENGLISH LANGUAGE

Academic IELTS for UKVI 5.5 overall (minimum 5.5 in writing) or equivalent

### AGE

Applicants must turn 18 by the 1st of September of the year they are due to complete their ISC course and progress

## COURSE FACTS

### ENTRY DATES

September, November (Enhanced Induction) or January

### LENGTH

Two semesters

### STRUCTURE

A variety of academic modules plus Academic English Skills

## COURSE BENEFITS

This course is equivalent to the first year of an undergraduate degree. Its aim is to fully prepare you for joining the second year of your chosen undergraduate degree, so that you can go on to achieve success at Sussex, in your career and in the world.

## CHOOSE YOUR SUBJECT ROUTE

The International Year One is offered in the following range of subject routes:

- Business and Management
- Computing
- Engineering
- Film and Media
- Finance and Accounting
- International Relations and International Development

## WHAT YOU WILL LEARN

You will study a combination of core and optional subject-specific modules that focus on teaching you the English language, study skills, employability and academic areas most relevant to your chosen degree at Sussex.

## YOUR ASSESSMENT

You'll participate in exams, seminar discussions, group projects, presentations and essays, for example, as part of your overall assessment.

## IMPROVE YOUR ENGLISH

If you do not meet the English language requirements to study the International Year One, you can improve your level of English by studying our English language course delivered online or enrolling for the Language Lift course.



More information  
[isc.sussex.ac.uk/international-year-one](http://isc.sussex.ac.uk/international-year-one)

**=16th**  
**in the UK**  
**for Communication**  
**and Media Studies**

*QS World University Rankings  
by Subject 2024*

---

## BUSINESS AND MANAGEMENT

---

Studying an undergraduate degree in Business and Management is often a very beneficial career choice. Increase your employability and prepare yourself for a career in business with this subject route.

---

### MODULES

- Academic English Skills
- Digital Data and Decision-Making Skills
- Intrapreneurship and Entrepreneurship
- Introduction to Accounting
- Introduction to Business Management
- Introduction to Economics
- Introduction to Marketing
- Organisational Behaviour

---

### PROGRESSION DEGREES

Business and Management Studies BSc (Hons)<sup>^</sup>

International Business BSc (Hons)<sup>^</sup>

Marketing and Management BSc (Hons)<sup>^</sup>



#### More information

For a full list of progression degrees and more information, visit [isc.sussex.ac.uk/international-year-one](http://isc.sussex.ac.uk/international-year-one)

---

## COMPUTING

---

With an increasing number of businesses and organisations seeing the long-term value of computing specialists, there has never been a better time to choose a degree specialisation in this field. This subject route will help you get there.

---

### MODULES

- Academic English Skills
- Data Structures and Algorithms
- Further Programming
- Global Design Challenge
- Introduction to Computer Systems
- Introduction to Multimedia
- Introduction to Programming
- Mathematical Concepts
- Programming Concepts

---

### PROGRESSION DEGREES

Computer Science BSc (Hons)<sup>\*</sup> or MComp<sup>\*</sup>

Computer Science BSc (Hons)<sup>\*</sup> and Artificial Intelligence

Computing for Business and Management BSc (Hons)<sup>\*</sup>

Computing for Digital Media and Games BSc (Hons)<sup>\*</sup>

---

## ENGINEERING

---

Technical, practical and offering a variety of well-paid career options, engineering is a rewarding subject to study at university. To study an undergraduate degree in the field of engineering, look no further than this subject route.

---

### MODULES

- Academic English Skills
- Global Design Challenge
- Engineering Maths A
- Electrical Circuits and Devices
- Materials and Manufacturing Processes
- Electromagnetism and Introduction to Electrical Machines
- Electronic Devices and Circuit Prototyping
- Engineering Maths B
- Engineering Mechanics
- Engineering Thermodynamics
- Programming for Electronic Engineering
- Programming, Technical Drawing and CAD

---

### PROGRESSION DEGREES

Electrical and Electronic Engineering BEng (Hons)<sup>\*</sup> or MEng (Hons)<sup>\*</sup>

Mechanical Engineering BEng (Hons)<sup>\*</sup> or MEng (Hons)<sup>\*</sup>

Mechanical Engineering with Robotics BEng (Hons)<sup>\*</sup> or MEng (Hons)<sup>\*</sup>

Sustainable Automotive Engineering BEng (Hons)<sup>\*</sup> or MEng (Hons)<sup>\*</sup>

<sup>\*</sup>Programme is available with an optional professional placement year

<sup>\*</sup>Programme is available with an optional industrial placement year

## FILM AND MEDIA

From television to radio, photography to journalism, there are many exciting career options in the film and media industry. If you dream of working in this area, this subject route can help you on your way to studying an undergraduate degree in the discipline you love.

### MODULES

- Academic English Skills
- Analysing Media Texts
- Approaching Film and Media Studies
- Connecting Film: Influences and Authorship
- Media Industries: Critical Debates
- Media Production: Digital Video and Sound
- Media Production: Photography and Design
- Studying Film

### PROGRESSION DEGREES

Film Studies BA (Hons)  
 Media and Communications BA (Hons)  
 Media Production BA (Hons)



#### More information

For a full list of progression degrees and more information, visit [isc.sussex.ac.uk/international-year-one](http://isc.sussex.ac.uk/international-year-one)

## FINANCE AND ACCOUNTING

Graduates from finance and accounting degrees are in high demand, and are often offered a range of fast-paced job opportunities in every kind of industry. To boost your employability by studying a finance-based degree, choose this subject route.

### MODULES

- Academic English Skills
- Introduction to Financial Accounting
- Introduction to Mathematics for Finance and Accounting
- Principles of Finance
- Business Management and Economics
- Financial Institutions and Markets
- Law for Accounting
- Digital, Data and Decision-Making Skills (Optional)
- Introduction to Management Accounting (Optional)
- Organisational Behaviour (Optional)

### PROGRESSION DEGREES

Accounting and Finance BSc (Hons) ^  
 Banking and Digital Finance BSc (Hons) ^  
 Finance and Business BSc (Hons) ^

^Programme is available with an optional professional placement year

## INTERNATIONAL RELATIONS AND INTERNATIONAL DEVELOPMENT

International relations and development careers centre around highly important areas of work and require well-rounded, educated graduates. For access to an exciting range of undergraduate degrees, this subject route will help you get where you want to be.

### MODULES

- Academic English Skills
- Colonialism and its Legacy
- Development Issues
- Development of the Modern International System
- Enhanced Reading for International Relations and International Development
- Global Affairs
- Introduction to International Relations
- Key Thinkers in Development

### PROGRESSION DEGREES

International Development BA (Hons)  
 International Relations BA (Hons)  
 International Relations and Development BA (Hons)



“

The experience of the International Study Centre is unique because you meet a lot of different nationalities there, which provides you with an understanding of diversity and multiculturalism. The teachers are very international and professional.”

**Yolanda from China**

Studied International Year One in International Relations and International Development  
Progressed to BA (Hons) International Relations and Development



# EXTENDED INTERNATIONAL YEAR ONE IN BUSINESS AND MANAGEMENT

---

## GENERAL ENTRY REQUIREMENTS

### ACADEMIC

Good high school graduation grades or equivalent

### ENGLISH LANGUAGE

Academic IELTS for UKVI with minimum 5.0 overall (minimum 5.0 in writing) or equivalent

### AGE

17+

---

## COURSE FACTS

### ENTRY DATE

April

### LENGTH

Four semesters

### STRUCTURE

A variety of academic modules plus Academic English Skills

---

## COURSE BENEFITS

The course combines a variety of foundation and year one modules preparing you to enter the second year of chosen undergraduate business and management degrees at University of Sussex. The diverse, essential skills and knowledge you acquire in this programme will greatly increase your employability and prepare yourself for a career in business.

---

## WHAT YOU WILL LEARN

You will study a variety of modules that provide an in-depth understanding of business, while improving your English language, study skills, and employability.

---

## YOUR ASSESSMENT

You'll participate in exams, seminar discussions, group projects, presentations and essays, for example, as part of your overall assessment.

---

## IMPROVE YOUR ENGLISH

If you do not meet the English language requirements to study the Extended International Year One in Business and Management, you can improve your level of English by enrolling for the Language Lift course.



More information  
[isc.sussex.ac.uk/extended-international-year-one](https://isc.sussex.ac.uk/extended-international-year-one)

**17th  
in the UK  
for Marketing**  
*Complete University Guide 2025*

**Top 15  
in the UK  
for Business and  
Economics**  
*Times Higher Education World University  
Rankings by Subject 2024*

---

## MODULES

### SEMESTER ONE AND TWO

- Academic English Skills<sup>^</sup>
- Media, Communication and Society<sup>^</sup>
- Applications of Maths<sup>^</sup>
- Accounting
- Business Management
- Economics
- Marketing
- Organisational Behaviour

You will have the option to study any four of the pathway modules (Accounting, Business Management, Economics, Marketing and Organisational Behaviour).

<sup>^</sup>Core Modules: students must study this module

---

## MODULES

### SEMESTER THREE AND FOUR

- Enhanced Reading for Business and Management
- Introduction to Business and Management
- Introduction to Economics
- Introduction to Accounting
- Introduction to Marketing
- Digital, Data and Decision-Making Skills
- Organisational Behaviour
- Intrapreneurship and Entrepreneurship

---

## PROGRESSION DEGREES

- Business and Management Studies BSc (Hons)
- Business and Management Studies (with a professional placement year) BSc (Hons)
- International Business BSc (Hons)
- International Business (with a professional placement year) BSc (Hons)
- Marketing and Management BSc (Hons)
- Marketing and Management (with a professional placement year) BSc (Hons)

# PRE-MASTERS PROGRAMME

## GENERAL ENTRY REQUIREMENTS

### ACADEMIC

Recognised degree in related field or honours degree in any subject

### ENGLISH LANGUAGE

#### One semester course:

Academic IELTS for UKVI 6.0 overall (minimum 5.5 in all bands) or equivalent

#### Two semester course:

Academic IELTS for UKVI 5.5 overall (minimum 5.5 in all other bands) or equivalent

### AGE

20 years of age, or older

## COURSE FACTS

### ENTRY DATES

#### One semester:

November (Enhanced Induction), January or April

#### Two semesters:

September, November (Enhanced Induction) or January

### LENGTH

One or two semesters

### STRUCTURE

A range of academic modules per semester, plus Academic English Skills and Research Skills

## WHY PRE-MASTERS

This advanced course aims to fully prepare you for studying a postgraduate degree, so that you can go on to achieve success at Sussex, in your professional career and in the world.

You will study academic modules based on your progression degrees and your programme aim. This gives you the flexibility to deepen your knowledge based on your career aims and study interests. During the Pre-Masters Programme, you also have the option to change your progression degree.

## CHOOSE YOUR SUBJECT ROUTE

- Business, Management and Finance
- Film and Media
- Finance and Technology (FinTech)
- Law, International Relations and Social Sciences
- Computer Science and Engineering
- Life Sciences
- Psychology

## WHAT YOU WILL LEARN

You will study a combination of core and optional subject-specific modules that focus on teaching you the English language, study skills, employability and academic areas most relevant to your chosen degree at Sussex.

## YOUR ASSESSMENT

You'll be assessed through many different activities, which may include exams, seminar discussions, group projects, presentations, essays, practical reports and software exercises, depending on your subject route.

## IMPROVE YOUR ENGLISH

If you do not meet the English language requirements to study the Pre-Masters Programme, you can improve your level of English by studying our English language course delivered online.



More information  
[isc.sussex.ac.uk/pre-masters](https://isc.sussex.ac.uk/pre-masters)

9th  
in the UK  
for Social Sciences

Times Higher Education World University  
Rankings by subject 2024

## BUSINESS, MANAGEMENT AND FINANCE

A pathway leading to postgraduate degrees in Business, Management and Finance at University of Sussex.

### MODULES

- Academic English Skills
- Interdisciplinary Research
- Postgraduate Skills
- International Business and Leadership
- Marketing
- Accounting for Managers
- Finance and Investment

### PROGRESSION DEGREES

Accounting and Finance MSc  
 Banking and Finance MSc  
 Development Economics MSc  
 Entrepreneurship and Innovation MSc  
 International Business and Development MSc  
 Management of Information Technology MSc  
 Project Management MSc  
 Strategic Innovation Management MSc<sup>^</sup>  
 Science and Technology Policy MSc<sup>^</sup>  
 Sustainable Finance and Accounting MSc<sup>^</sup>



#### More information

For a full list of progression degrees and more information, visit [isc.sussex.ac.uk/pre-masters](http://isc.sussex.ac.uk/pre-masters)

## FILM AND MEDIA

A pathway leading to postgraduate degrees in Film and Media at University of Sussex.

### MODULES

- Academic English Skills
- Interdisciplinary Research
- Postgraduate Skills
- Global Film Movements
- Approaches to Media and Communication
- Media Critical Production: Photography
- Media Critical Production: Digital Video

### PROGRESSION DEGREES

Film Studies MA  
 International Journalism MA  
 Media and Cultural Studies MA  
 Media Practice for Development and Social Change MA

## FINANCE AND TECHNOLOGY (FINTECH)

A pathway leading to postgraduate degrees in Finance and Technology (Fintech) at University of Sussex.

### MODULES

- Academic English Skills
- Interdisciplinary Research
- Research Skills 2
- Accounting for Managers
- Finance and Investment
- Maths for Pre-Masters
- Data Analysis and Modelling

### PROGRESSION DEGREES

Fintech, Risk and Investment Analysis MSc

## LAW, INTERNATIONAL RELATIONS AND SOCIAL SCIENCES

A pathway leading to postgraduate degrees in Law, International Relations and Social Sciences at University of Sussex.

### MODULES

- Academic English Skills
- Interdisciplinary Research
- Postgraduate Skills
- Legal Approaches to Global Studies
- International Relations
- Politics
- Conflict and Development

### PROGRESSION DEGREES

Anthropology of Development and Social Transformation MA  
 Art History MA  
 Childhood and Youth Studies MA  
 Climate Change, Development and Policy MSc  
 Conflict, Security and Development MA  
 Criminal Law and Criminal Justice LLM  
 Education MA  
 Gender and Media MA  
 Geopolitics and International Affairs MA  
 International Financial Law LLM  
 International Human Rights Law LLM  
 International Relations MA  
 Migration and Global Development MA  
 Social Anthropology MA  
 Social Development MA

<sup>^</sup>Programme is available with an optional professional placement year.



## COMPUTER SCIENCE AND ENGINEERING

A pathway leading to postgraduate degrees in Computer Science and Engineering at University of Sussex.

### MODULES

- Academic English Skills
- Interdisciplinary Research
- Postgraduate Skills
- Maths for Pre-Masters
- Data Analysis and Modelling
- Applications in the Global Context
- Design and Prototyping
- Programming and Systems Control

### PROGRESSION DEGREES

5G Mobile Communications and Intelligent Embedded Systems MSc\*

Advanced Computer Science MSc

Advanced Electronic and Electrical Engineering MSc

Advanced Mechanical Engineering MSc

Artificial Intelligence and Adaptive Systems MSc\*

Computing with Digital Media MSc

Data Science MSc\*

Engineering Business Management MSc

Management of Information Technology MSc

## LIFE SCIENCES

A pathway leading to postgraduate degrees in Life Sciences at University of Sussex.

### MODULES

- Academic English Skills
- Interdisciplinary Research
- Postgraduate Skills
- Statistical Research Methods
- Life Sciences: The Cutting Edge
- Exploring Ethics in Research
- Research Project: Psychology and Life Sciences
- Maths for Pre-Masters

### PROGRESSION DEGREES

Animal Behaviour MRes

Cancer Cell Biology MSc

Climate Change, Development and Policy MSc

Computer Science (Conversion) MSc

Conservation Biology MRes

Genetic Manipulation and Molecular Cell Biology MSc

Global Biodiversity Conservation MSc

Neuroscience MRes or MSc

## PSYCHOLOGY

A pathway leading to postgraduate degrees in Psychology at University of Sussex.

### MODULES

- Academic English Skills
- Interdisciplinary Research
- Postgraduate Skills
- Statistical Research Methods
- Research Project: Psychology and Life Sciences
- Psychology: The Cutting Edge
- Exploring Ethics in Research
- Maths for Pre-Masters

### PROGRESSION DEGREES

Cognitive Neuroscience MSc

Foundations of Clinical Psychology and Mental Health MSc

Marketing and Consumer Psychology MSc

Occupational and Organizational Psychology MSc

Psychology (Conversion) MSc

\*Programme is available with an optional industrial placement year.



#### More information

For a full list of progression degrees and more information, visit [isc.sussex.ac.uk/pre-masters](https://isc.sussex.ac.uk/pre-masters)



“

The International Study Centre enables me to study with many different nationalities, which is very interesting. If I had to describe the teaching here compared to my country, I would say that here it is more interactive and varied.”

**Muzi from South Africa**

Studied Pre-Masters in Business, Management and Finance

# SUPPORT THAT MATTERS

## HERE TO HELP

We know that living and studying away from home can be challenging at times, which is why our student support staff at the International Study Centre are here to help. Whether you need advice about your course or you simply need to talk, we'll be there to support you so that you can enjoy your Sussex student experience to the full.

## SUPPORT NETWORK

The University of Sussex has excellent support services, such as the Student Life Centre, where you can get advice and guidance on issues such as accommodation, fees, disabilities, mental health and learning needs. Friendly and experienced support staff also run groups and workshops to help you with university life.

## HEALTH SERVICES

There's a dentist, pharmacy and a health centre on campus, in case you ever feel unwell or need help with a health issue. You'll also have access to a drop-in centre in central Brighton where you can get medical treatment.

## PLACES OF WORSHIP

Sussex supports students from a range of different cultures and backgrounds. The Meeting House is the on-campus chaplaincy that hosts services for a range of faiths and religions, including the Jewish community. There's also a Muslim Student Centre and Muslim prayer facility.

## STUDENT INSURANCE

While studying in the UK you will need to have personal insurance. StudyCare Insurance Plus is an insurance policy that covers you for loss of personal possessions. It also gives you health and medical insurance for the duration of your studies at the International Study Centre.

## DISABLED ACCESS

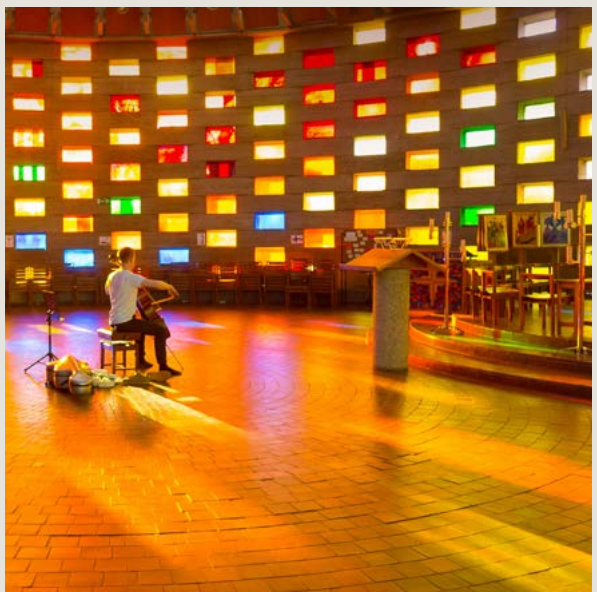
Sussex welcomes students of all abilities. The University has dedicated services and specialist staff who can provide information on a range of disabilities. Most of the academic buildings are accessible by wheelchair and you'll find disabled parking, tactile paving and handrails around the campus.



More information  
[sussex.ac.uk/studentlifecentre](https://sussex.ac.uk/studentlifecentre)

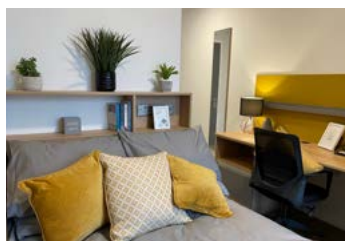


More information  
[sussex.ac.uk/equalities](https://sussex.ac.uk/equalities)





# ACCOMMODATION THAT FEELS LIKE HOME



## WELCOME HOME

Living in student accommodation is the best way to experience student life at Sussex. You'll make friends from around the world, have fun and learn to live independently within a supportive student community.

## STUDENT ROOST ACCOMMODATION

We've partnered with Student Roost, a leading student accommodation provider in the UK. Conveniently located between the University of Sussex campus and Brighton city centre, our accommodation options provide you with the flexibility and quality you expect. Located in Brighton, the new Hillfort House Roost is a short cycle or bus ride away from the University of Sussex International Study Centre. With fast Wi-fi, gym and social spaces available to you from the day you move in, this brand-new accommodation building provides you with a wide range of facilities you require to make your journey to the UK as smooth as possible.

## BENEFITS OF STAYING AT STUDENT ROOST

- 24/7 staff on site
- In-house house keeping
- High speed Wi-fi
- Spacious communal areas
- Courtyard
- Gym
- Study room
- Contents insurance
- Flexible payment terms
- Onsite laundry facilities
- Maintenance team
- Secured deposit.

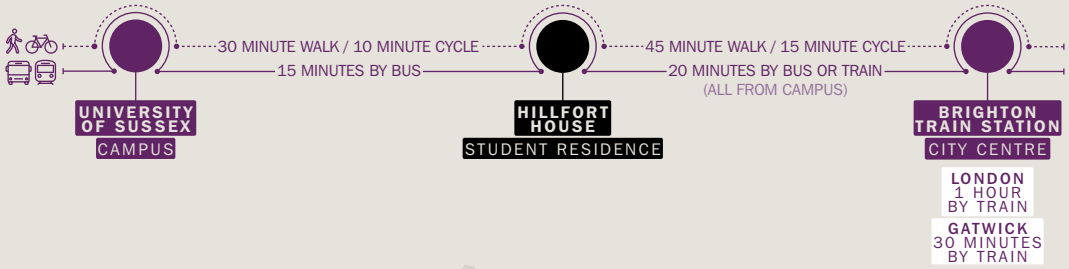
## PRIVATE ACCOMMODATION

Brighton is a friendly city with a range of private accommodation available. If you are booking your own accommodation privately, it is important that you let us know where you are staying and that you are staying less than 60 minutes away from the University of Sussex International Study Centre.



More information  
[isc.sussex.ac.uk/about-the-isc/accommodation](https://isc.sussex.ac.uk/about-the-isc/accommodation)

# SUCCEED IN THE WORLD





37179\_11.24

## Join us on social media

- @iscsussex
- @sussexisc
- @ISCSussex
- #MySussexStory

## Apply

If you would like to apply to study at University of Sussex International Study Centre, you will need to complete an application form and submit the relevant documentation.

You can apply through your local education agent. Alternatively you can apply directly via our website and one of our dedicated Student Enrolment Advisors will be happy to provide support through every step of the application process.

Full information on how to apply, fees, entry requirements and more, visit [isc.sussex.ac.uk/how-to-apply](https://isc.sussex.ac.uk/how-to-apply)



Delivered by



## Disclaimer

This guide is intended as a general guide for students considering entry to the University of Sussex International Study Centre from 2025. The University of Sussex International Study Centre is operated, and its programmes offered by Study Group Limited ('Study Group'). This guide forms no part of any contract between you and Study Group except as provided below. The guide is prepared in advance of the academic year to which it relates and Study Group makes every effort to ensure that the information contained here is accurate. Although reasonable steps are taken by Study Group to provide the programmes and services described, Study Group cannot guarantee the provision of any programme. Any programme may be altered or withdrawn owing to circumstances beyond Study Group's reasonable control. Such circumstances include (but are not limited to) industrial action, lack of demand, departure of key personnel, change in government policy, withdrawal or reduction of funding, change of law or changes necessitated by pandemic or epidemic. Study Group will take such steps as are available to it to minimise the effect of any alteration or withdrawal of a programme and we will notify you of such alteration or withdrawal as soon as possible. Such steps may include the offer of a place on an alternative programme. Alternatively you may withdraw your application without any liability for fees (including the enrolment fee).

Please note that the University of Sussex International Study Centre's website is the most up to date source of information regarding programmes and facilities and we strongly recommend that you always visit the website before making any commitments. The University of Sussex and its logo are registered Trade Marks of the University of Sussex. 'Study Group' and the Study Group logo are registered Trade Marks of Study Group. Unless otherwise stated, all material in this publication is copyright of Study Group. No part of this publication may be reproduced, stored in a retrieval system or transmitted in any form, or by any means, electronic, mechanical, photocopying, recording or otherwise, without the permission of Study Group.

For more information, please visit [studygroup.com](https://www.studygroup.com)