

# START YOUR FUTURE IN NEW YORK



## Contents

---

**2** Start Your Future  
in New York

**4** Choose Your LIU

**6** LIU Brooklyn

**8** Life at Brooklyn

**10** LIU Post

**12** Life at Post

**14** Academic Programs

**15** Pharmacy

**16** Business

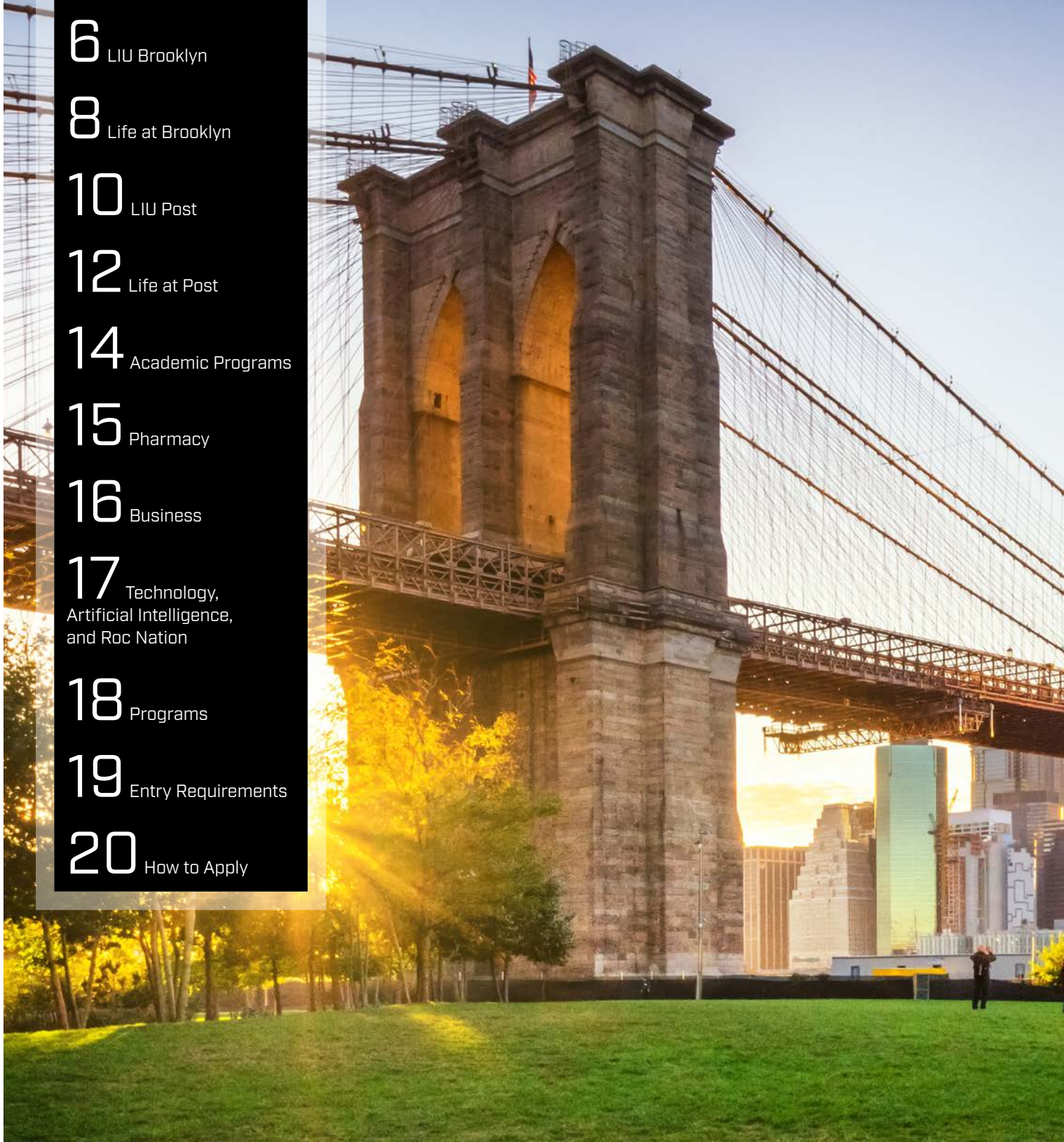
**17** Technology,  
Artificial Intelligence,  
and Roc Nation

**18** Programs

**19** Entry Requirements

**20** How to Apply

LIU was **founded**  
**in 1926** in Brooklyn,  
expanding to the Long Island  
Post campus in 1954



# WELCOME TO LONG ISLAND UNIVERSITY

With LIU's New York location, unmatched **real-world learning experiences** and industry connections, the possibilities for your future are endless.

LIU offers a wide range of undergraduate and postgraduate programs taught by faculty who are **industry experts in trending fields**, with a focus on hands-on learning so you can excel, grow, and prepare for your future success.

At Long Island University, you can choose to experience New York City in your own way with a choice of **two unique campuses**. Choose from our traditional Post campus on the shores of Long Island, or our Brooklyn campus in the heart of New York City. LIU offers **a unique college experience for every student**.

Whether you're a **city lover** or you're seeking the **quintessential college campus** experience, we've got the perfect degree for you.





# START YOUR FUTURE IN NEW YORK

## Exclusive Partnerships

LIU partners with top companies creating an extensive network of opportunities to our students. With access to internships and connections at top companies, you will gain extensive experience during your studies at LIU. Our students often receive full-time job offers during their internships, to be accepted upon graduation. Our online Handshake job portal will help you find these connections.

## You'll Succeed. We Promise.

The LIU Promise is LIU's commitment to ensuring you have the right tools, guidance and support to achieve your goals.

If you're an undergraduate student, you'll be assigned an LIU Promise Success Coach. You'll meet with your coach regularly from day one through graduation. Your coach will be the point of contact for everything you need—from academic and career counseling to campus activities to financial aid. It's our promise to help you chart your success.

If you're in a graduate program, you'll be assigned an Enrollment Services coach, as well as an academic advisor from your department of study, to guide and assist you with your academic progress, degree requirements, and any financial aid issues.

Additionally, all LIU students can benefit from meeting with a Career Coach for help with:

- Exploring majors and career options
- Identifying internships and jobs in your field
- Writing a resume and interview prep
- Building a network and finding mentors



## #18 Best Student City in the World

QS World University Rankings, 2025

You will be supported all the way with our **LIU Promise, Enrollment Services** and **Career Coaches**

**10:1** student-to-faculty ratio

LIU partners with **top companies** to offer internships and connections to students

**285,000** alumni globally

Ranked **#1 City** in the World by Oxford Economics (2024), New York is one of the **leading financial and business centers** of the global economy.

LIU's Brooklyn campus is located in the heart of Brooklyn, **ranking 2nd** among the nation's fastest growing tech hubs, followed closely by nearby Manhattan.

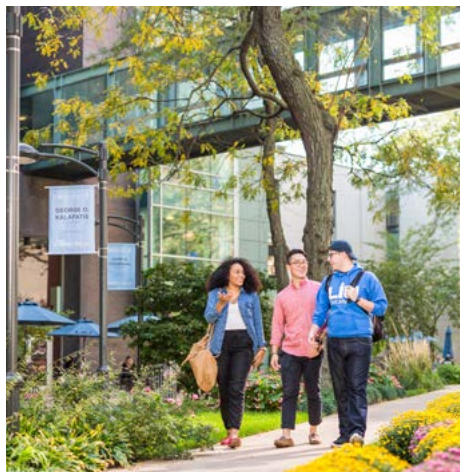
The heavy concentration of pharmaceutical industry and health-care institutions in the New York Metropolitan area provides **unique opportunities** for both study and practical experience.

LIU students have obtained internships and jobs at:

- Apple, Amazon, Google, KPMG, JP Morgan Chase, the New York Stock Exchange, Novartis, the U.S. Food and Drug Administration (FDA), Merrill Lynch, Gucci, ESPN, Marvel, and more.

**50+** Fortune 500 companies headquartered in New York City including:

- JPMorgan Chase
- Verizon Communications
- Goldman Sachs
- Estée Lauder
- Pfizer



# CHOOSE YOUR LIU

## Innovative, Urban Brooklyn

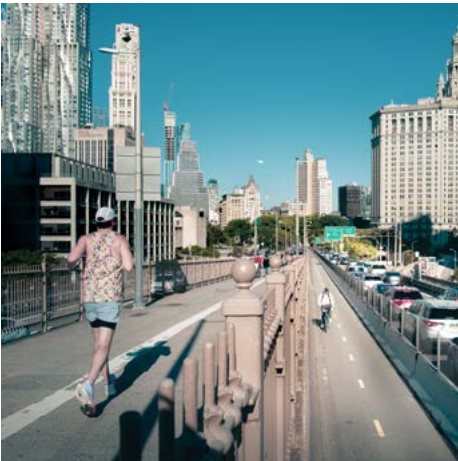
If you're looking for the **ultimate city experience**, living in – and being a part of – Brooklyn's busy and **exciting neighborhood** is for you. Live and study in the **"Tech Triangle"**, with some of the world's **leading companies** on your doorstep. With all this, plus some of the world's biggest events and most famous entertainment venues both locally and in Manhattan, you'll **never be bored** in New York City.

"No matter where I go, I meet people from Brooklyn. I'm proud of that heritage. It's where I'm from, who I am."

**Howard Schultz,**  
former CEO of Starbucks



# BROOKLYN



## Chic, Relaxed Post

Looking for **space to think** and focus while remaining close to a major city? Post offers a **friendly community**, with **outdoor activities** and a calm lifestyle to give you the time to get the most from your degree. Try something new, like **sailing** or **horse riding**, or just **enjoy** living in the place New Yorkers flock to each summer for vacation.



## POST



F. Scott Fitzgerald based his popular novel 'The Great Gatsby' in the Gold Coast of Long Island, where Post is located.





# LIU BROOKLYN

Multicultural Brooklyn is famous around the world. From the music of Jay-Z to the iconic hot dog, Brooklyn has had an impact far larger than the size of this borough of New York City.

## “Concrete Jungle Where Dreams Are Made...”

Although small, Brooklyn is the most highly populated borough in the city, giving it a bustling and energetic feeling. You can find arts, science, and business communities all in close proximity, and often working together.

These days, Brooklyn is known for a number of technology start-ups that have found a home there, reflecting the forward-thinking nature of the area. This is known as the

‘Tech Triangle’, and with LIU Brooklyn located within the triangle, there are plenty of opportunities for students to network with the technology community.

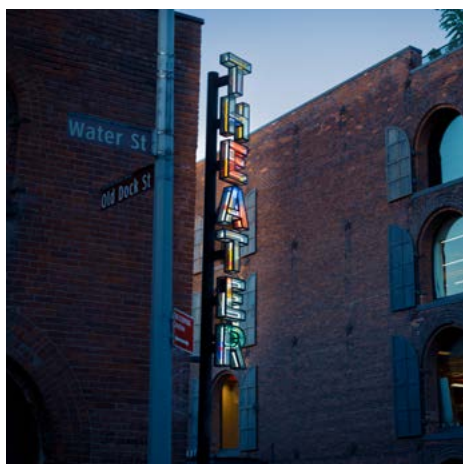
Brooklyn is open-minded, edgy and dynamic, appealing to those who are interested in setting their own path and being a part of a growing scene.

The Brooklyn Bridge is **1.8 kilometers** (1.1 miles) long

Brooklyn has nearly **50 kilometers** (30 miles) of shoreline

Prospect Park borders 5 Brooklyn neighborhoods and welcomes **10 million visitors** every year





### “There’s Nothing You Can’t Do”

To the northeast of the LIU Brooklyn campus lies Williamsburg, the area famous for the “hipster” movement. Here you will find coffee shops, nightlife and a wide range of places to eat. It even has its own market, Smorgasburg, open every weekend, where you can sample local street food.

Throughout Brooklyn you can go shopping in the array of local boutiques, home to vintage fashion and emerging designers. You can also catch the subway to Manhattan and check out the famous Macy’s and Bloomingdale’s department stores.

Manhattan offers the traditional New York City tourist experience; take a trip up the Empire State Building or marvel at the enormous Grand Central Terminal. You can hire a rowboat on Central Park’s lake or find something to eat at some of the world’s best restaurants.

However you choose to enjoy Brooklyn and the rest of New York City, there’s something for everyone.

### LIU Brooklyn

At our Brooklyn campus in the epicenter of business, healthcare and tech innovation—in the heart of New York City—you’ll get the best of both worlds:

- The convenience and excitement of being just one subway stop from Wall Street and steps away from the Barclays Center, top arts venues like the Brooklyn Academy of Music, and trendy restaurants and boutiques
- A beautifully landscaped 11-acre campus offering security and tranquility amidst the hustle and bustle of New York City

Our friendly campus is located close to the iconic Brooklyn Bridge. Student residences, academic facilities and lecture theaters are housed in both traditional and modern buildings that are connected together by a series of enclosed bridges.

Although the campus is located in an urban area, our gated campus offers beautifully landscaped areas in which to study, meet with friends or just relax.

### Brooklyn Is New York’s College Town

LIU Brooklyn is located just steps away from the Barclays Center and top arts venues like BAM. It is also near the hip restaurants, boutiques and cafés of Fort Greene, and it’s only a short subway ride to the vast cultural offerings and professional opportunities of Manhattan.

### ABOUT BROOKLYN, NEW YORK

Population: **2.6 million residents**

Almost **30%** of all New Yorkers live in Brooklyn

**200** different languages spoken

Nearly **40%** of residents were born outside the U.S.

**700+** Arts and Cultural institutions, including:

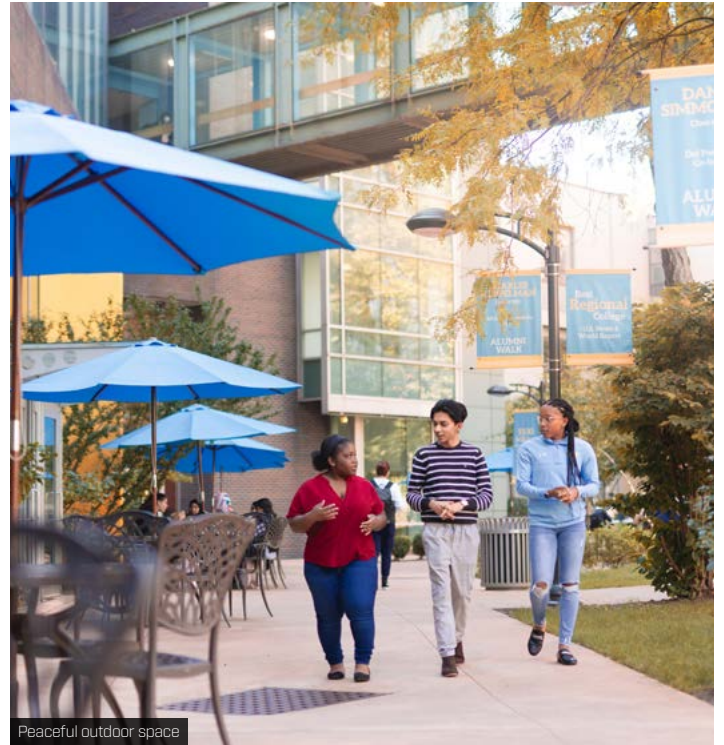
- The Brooklyn Museum, one of the oldest and largest art museums in the U.S.
- New York Transit Museum
- Brooklyn Academy of Music [BAM]

#### Entertainment:

- Barclays Center: home of the Brooklyn Nets NBA team, New York Islanders NHL team, and host to top artists like Beyoncé and Madonna
- New York Aquarium (the city’s one and only aquarium)
- Brooklyn Heights and Brooklyn Promenade
- Brooklyn Botanic Garden
- Coney Island, home to the legendary 1927 roller coaster, The Cyclone



To find out more about life on campus at LIU Brooklyn, visit [liu-international.com/campus](http://liu-international.com/campus)



# LIFE AT BROOKLYN

## On Campus

Our friendly and safe campus is located close to the Brooklyn Bridge, a landmark recognized around the world. You'll also be within walking distance of the Barclays Center, the Brooklyn Academy of Music and amazing restaurants and shops.

## Find a New Interest

With more than 80 active student clubs, organizations, and athletic teams, including arts, culture, the environment, student government, health care, the media, sports, and recreation, it's never been easier to get involved. Becoming a member of one—or several—of our exciting student clubs and organizations will immerse you in campus life and help you build long-lasting friendships.

## Stay Active in the City

There are a number of on-campus programs, services and facilities to keep you fit and healthy. The Steinberg Wellness Center includes a swimming pool, gym, rooftop running track, tennis courts and a 2,500-seat sports arena. 30+ sports teams represent the University in athletic leagues and tournaments, including basketball, soccer and cross-country running.

## Culture and Entertainment

The on-campus Kumble Theater for Performing Arts is the place to see a diverse range of music, dance and theatre. To watch a movie, play video games or relax over a game of pool, head to the Avena Lounge. This student-run business also offers snacks, drinks, and events like comedy and jazz nights.

## Join in with "Greek" Life

If you're interested in the traditional American college experience seen in the movies, you can choose to join a fraternity or sorority during your studies. Known as "Greek" membership, joining one of these houses provides the opportunity to develop valuable leadership skills, get involved with the local community, join social activities, and form lifelong friendships.

## Residence Halls

LIU Brooklyn has two residential halls. Richard L. Conolly Hall is a 16-story building with standard, suite, and apartment spaces for undergraduate or graduate residents. All Conolly students residing in standard and suite rooms are required to enroll in the Carte Blanche meal plan. Graduate students and students 21+ are eligible to live in apartments at our 490 Fulton Hall.

Each residential hall also has:

- Free Wi-Fi and cable
- Study lounges
- Recreation rooms
- TV lounges
- Free laundry rooms
- 24/7 security

When it comes to housing, safety is our number one priority. The campus is self-contained, fully protected on all sides by gates and has on-site security guards 24/7.



Escape into nature just one block away at **Fort Greene Park**, a 30-acre oasis with **walking trails, gardens, and free events** including concerts, movie nights, and yoga classes.

Brooklyn is the **2nd fastest** growing tech hub in the nation



Accommodation at LIU Brooklyn

## Dining

You will find a variety of food options across campus. Whether you need a caffeine boost before class, or want to sit and enjoy a meal with your friends, you will find plenty of great choices on campus and at nearby restaurants. You can choose a meal plan to help save on food costs and make sure you've always got energy to focus on your studies.

- Check out Shark Bite Café for American entrees, international specialties, vegetarian selections and much more.
- Freshens offers an energy boost that tastes great with a variety of smoothies, frozen yogurts, and salads.
- At Peet's Coffee & Tea, grab a cup of coffee and some breakfast on the way to class, or stop by in the afternoon for a snack.
- P.O.D. Express is a one-stop shop for grab-n-go items grocery needs, coffee, bottled beverages, pastries, or snacks in between classes and studying.

## Safety First

Our Department of Public Safety provides safety and security services 24 hours a day 365 days a year, including:

- 24-hour foot, bicycle and vehicle patrols
- Late-night walking escort service
- 24-hour emergency telephones
- Lighted walkways
- Residence entry card system
- Crime prevention programs
- Personal safety workshops



Find out more about public safety at [liu.edu/brooklyn/public-safety/crime-prevention-campus-security](https://liu.edu/brooklyn/public-safety/crime-prevention-campus-security)



I chose to study at Long Island University because I feel like it gives me such an experience that no other school could. Roc Nation is a label owned by Jay-Z. So, both the connections and the realness of the business is just... I can feel it here in the school. I really like the professionals that work with us. It really gives a hands-on experience on the whole music industry.

Laura, Hungary  
Music and Marketing



# LIU POST

The Post campus is located on Long Island's Gold Coast, the vacation destination of choice for many of New York City's residents.

## The Gold Coast

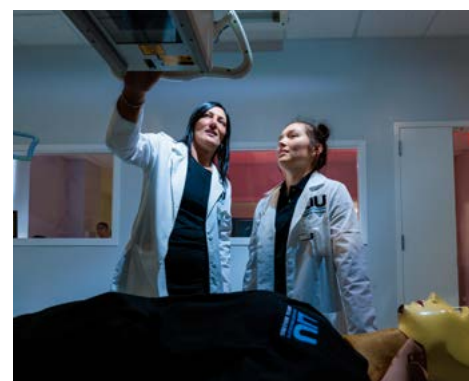
Long Island's Gold Coast inspired the classic novel "The Great Gatsby," and the historic campus is located on the 330-acre estate of the Post Cereal family. With three mansions on-site, 4,000 trees and nature trails throughout, LIU Post offers an idyllic haven for those wishing to be part of a community and have an outdoors lifestyle.

As suggested in the name, the Gold Coast has a beautiful sandy coastline, where you can relax or hire a boat and go sailing. The nearby woodlands also offer horse riding and hiking when you want a break from your studies.

**5** minutes from Long Island's beautiful beaches

**22** miles to New York City

**330** acres of stunning countryside



### Arts, Culture and Entertainment

The heart of New York City is less than an hour away by train so you can easily get into the city and visit some of the famous attractions.

On campus, the Tilles Center for the Performing Arts is Long Island's leading venue for world-class cultural events. Students can attend and learn from professionals in the arts and the business side of the arts.

### Sports and Athletics

State-of-the-art sports facilities make LIU athletes leaders on the track and field. Student-athletes here combine their academic reputation with an impact in the community and benefit from the division-leading teams. The Sharks compete in NCAA Division I athletics and are members of the Northeast Conference. Athletic achievements include 23 national championships, 6 Olympians, 68 professional draft picks.

### Top 10% Highest Paid College Graduates: Health Professions (Bachelor's)

College Factual, 2024

### Ranked one of the Best Northeastern Colleges

The Princeton Review, 2025

**90%** of faculty hold the highest degree in their field

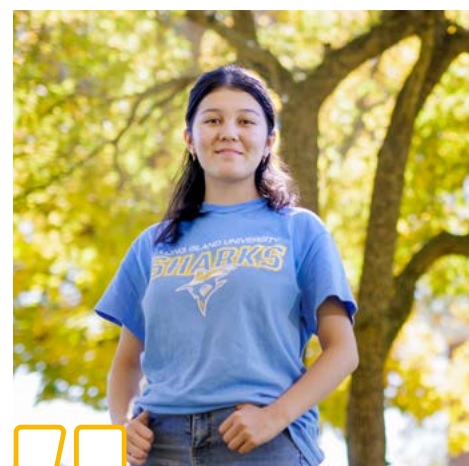
### Business Skills

For students who are interested in becoming entrepreneurs, the Student-Run Businesses program will teach you leadership skills and give you experience in every business function along the way. Proceeds are put back into the University to provide more student ventures and fund scholarships.

### Global Citizens

Our students give back to local and global communities through service organizations, charity events and social awareness initiatives. LIU Post students devoted more than 25,000 hours to community service in recent years, earning a place on former President Obama's Community Service Honor Roll. LIU Post students...

- Build homes in Mexico
- Develop fundraising strategies for local charities
- Organize toy drives
- Volunteer at local soup kitchens
- Counsel families affected by 9/11
- Work with disabled children
- Raise funds for breast cancer research
- Are eco-friendly and volunteer for clean-up initiatives



In my home country, I studied computer science in my first language, which is Russian. And coming here, I got to learn computer science in English. In my country, we don't speak English at all. So, when I came here, English was everywhere, and I think my English skills improved a lot, speaking, listening, and understanding.

Nodira, Uzbekistan  
BS Computer Science



To find out more about life on campus at LIU Post, visit [liu-international.com/campus](http://liu-international.com/campus)



The Tilles Centre for the Performing Arts

# LIFE AT POST

## On Campus

Our large campus is set in beautiful countryside where you can enjoy relaxing or try new activities. Broaden your horizons and explore new opportunities with nearly 80 athletic teams, student clubs, and organizations – including arts, the environment, student government, healthcare and media.

## Culture and Entertainment

The Tilles Center for the Performing Arts brings popular comedians, singers and bands to campus with discounted tickets for students. Hillwood Commons Lecture Hall is another popular venue for plays, small concerts, lectures and coffee.

## Visual and Performing Arts Facilities

- 2,200-seat concert hall
- 490-seat recital hall
- Cinema and two theaters
- TV and radio stations with two newsrooms
- Interactive multimedia arts lab
- Music technology lab

## Keep Active

The Recreational Sports Department is committed to providing you with the best programs, services and equipment. It enriches your university learning experience and fosters a lifetime commitment to health.

## Sports and Fitness Facilities

- Eight-lane swimming pool
- Three full-size basketball courts
- Racquetball courts
- Elevated indoor jogging track
- Classes in yoga, pilates, Zumba, and total body conditioning
- Club and intramural sports: ice hockey, equestrian, dance, badminton, and more
- North Shore Equestrian Center and horse riding trails

## Residence Halls

About 1,600 students live in eight residence halls on the LIU Post campus. Some are traditional-style, offering two, three, or four-person rooms that open onto a common hallway. All share a large bathroom.

Every residence hall offers lounges for relaxation or study, as well as snack areas with vending machines and convection ovens, and fully equipped laundry rooms.

## Meal Plans

You can choose a meal plan that will provide your food each day, saving you time and money. Meal plan options include:

- Varying quantity of meals per week at the Winnick Student Center dining hall
- Additional Dining Dollars which can be used at any on-campus dining location



Shark Nation, for everything athletics at LIU

### Student Entrepreneurs

LIU Post has several student-run businesses, plus the Browse store, which is student-staffed.

**70+ student clubs & organizations**



### Hillwood Commons

This three-story building is the student and community hub of LIU Post. It features a large cafeteria, Starbucks, Subway, Twisted Taco, lecture hall, movie theater, museum, computer lab, gaming lounge, student organization offices, student information center, student-run businesses, and a variety of areas for group study, recreation and quiet contemplation.

### Shuttle Services

LIU Post is home to the Shark Shuttle. This shuttle service runs throughout the academic year as a free service to students. The Shark Shuttle takes students to the Hicksville Train Station, Broadway Mall, and even just around campus! The Shark Shuttle is easy, convenient, and puts the entire Long Island/NYC area at your fingertips!

### Security Services

Our Department of Public Safety is committed to providing a safe and secure environment for students, faculty, staff and visitors at LIU Post. Our security services include:

- 24-hour foot, bicycle and vehicle patrols
- Late-night walking escort service
- 24-hour emergency telephones
- Lighted walkways
- Residence entry card system
- Crime prevention programs
- Personal safety workshops



Find out more about public safety at [liu.edu/post/public-safety/crime-prevention-campus-security](http://liu.edu/post/public-safety/crime-prevention-campus-security)



I'm so glad that I came. I love the campus, it's so beautiful, and I love the program, I love campus life, I do many activities and I love them all.

It's really central, and it's close to the train station so you can go to Manhattan any time that you want.

**Karen Chayban, Mexico**  
MS Nutrition



## ACADEMIC PROGRAMS

At LIU, we offer a wide range of programs, many of which are in top areas such as **business, pharmacy, computer science** and **artificial intelligence**. Our faculty are industry experts and bring their professional experience into the classroom for our students. LIU's emphasis on experiential learning means you will gain **real-world, hands-on experience** while you study for your degree.



## #4 best pharmacy school in the State of New York

[US News and World Report, 2023]

### PHARMACY

At LIU Pharmacy, you'll find a tradition of excellence that is unmatched. As one of the largest and oldest pharmacy schools in the country, we have educated more than 20,000 pharmacy students, many of whom are now leaders in their field.

#### Program options

LIU Pharmacy offers a variety of focus areas for your degree including:

- **Doctor of Pharmacy (PharmD):** A 6-year accelerated, advanced-degree, **undergraduate-entry** professional program preparing students to become practicing pharmacists
- **Pharmaceutics (MS):** With concentrations in Cosmetic Science or Industrial Pharmacy
- **Pharmacology & Toxicology (MS)**
- **Drug Regulatory Affairs (MS)**
- **Pharmacy Administration (MS)**

The Arnold & Marie Schwartz College of Pharmacy and Health Sciences is located on LIU's Brooklyn campus in the heart of one of New York City's hottest neighborhoods, near the world's top pharmaceutical companies, academic centers, and teaching hospitals.

#### Top career opportunities

Our outcomes-oriented approach will give you the skills you need to take advantage of a wide range of pharmaceutical career opportunities with competitive starting salaries.

#### Innovative STEM degree

All LIU Pharmacy programs are STEM designated, which can qualify you to extend your post-graduation stay in the U.S. for Optional Practical Training (OPT).



#### Hands-on learning and career preparation

All LIU Pharmacy programs are career oriented. Our unique combination of experiential learning opportunities at leading clinical sites and one-on-one interactions with top-notch faculty in state-of-the-art research laboratories will help you discover your full potential for success.

LIU Pharmacy's Brooklyn campus offers students easy access to one of the largest health care job markets in the world and hundreds of affiliations with top clinical research and medical facilities, providing unique opportunities for both study and practical experience from the start of their programs.

LIU students have gone on to work at companies like Novartis, the U.S. Food and Drug Administration (FDA), Regeneron, the Cleveland Clinic, and more.

#### Cutting-edge research

The LIU College of Pharmacy offers research training programs for students at all levels of their studies. Emphasis is placed on the importance of high-quality research experiences in the fields of cancer pharmacology, pharmaceuticals, cosmetics, drug regulation, and drug discovery.

The Arnold & Marie Schwartz College of Pharmacy and Health Sciences has several institutes and programs established to bring together faculty and students towards becoming leaders in pharmaceutical and biomedical research, including:

- The Lachman Institute for Pharmaceutical Analysis
- The Natoli Institute for Industrial Pharmacy Research and Development
- Cancer Research Laboratories
- The Samuel J. and Joan B. Williamson Institute for Pharmacometrics
- The Arthur Zupko Laboratory for Precision Medicine

**A Princeton Review “Best Business School”  
for 18 years in a row**

**AACSB Accreditation - less than 6%  
of business schools worldwide can  
claim this distinction**

**One-of-a-kind hands-on learning experiences**

## BUSINESS

**LIU’s business students learn classroom theory and gain practical experience through internships, engaged learning, and introductions to top executives and entrepreneurs.**

### Range of programs

You can choose from many business programs at LIU. We offer a variety of both undergraduate and graduate programs including:

- Accounting
- MBA/Business Administration\*
- Data Analytics\*
- Entrepreneurship
- Finance
- Human Resources
- Management
- Marketing
- Public Administration

### STEM-Designated Business Degrees

LIU offers STEM-designated business degrees to meet the growing demand for professionals with expertise in business and STEM fields.

- Data Analytics BS
- Data Analytics & Strategic Business Intelligence MS
- MBA: Concentrations in entrepreneurship, finance, international business, management information systems, management, marketing and accounting



### Engaged learning

LIU’s hands-on learning opportunities make us, and our students, stand out. Business students can participate in student-run consulting, startup incubator, our Financial Markets Lab, and more.

#### LIU-iQ

LIU-iQ is a client-paid, student-run consulting program. You will have the opportunity to implement semester-long business cases for domestic and international companies.

#### LIU Incubator Space

Our incubator space offers student entrepreneurs mentors, resources, and office space to make their business ideas a reality.

#### Center for Entrepreneurship

This center aims to connect the LIU community with the New York startup ecosystem by providing networking opportunities, programs, resources, and incubator space.

#### Brooklyn Trading Floor

Including Bloomberg Terminal, the universal benchmark for financial data and analysis, the Trading Floor provides LIU students with the tools to analyze financial markets, assess economic developments and interpret the key changes that impact the international economy.

#### Center for Branding & Licensing

LIU’s unique Center offers research, internships, and bespoke and executive education for licensing professionals around the world.

#### LIU Student-Run Investment Fund

The student-run investment fund gives students the opportunity to manage a real investment fund in the market. Students do the research, create the prospectus, and execute the trades through our Brooklyn trading floor.

## #205 Graduate Computer Science Programs

(U.S. News & World Report, 2024)

Artificial Intelligence is listed in the **Top 5 Most In-Demand Skills in 2021** by Forbes, Indeed, and LinkedIn



## TECHNOLOGY

In the modern world, digital communications and technology are essential to nearly every business, large or small. From smartphones to the web, to database networks, you'll learn the skills that are essential to today's international marketplace.

### Gain hands-on skills with LIU's cutting-edge STEM-designated programs

- **Computer Science (BS, MS):** This program will provide you with knowledge and technical skills to design and develop software systems, and become a successful leader in your computer science and information technology career
- **Data Analytics and Strategic Business Intelligence (BS, MS):** This specialized program offers a combination of data science, IT, and business courses
- **Artificial Intelligence (BS, MS):** Among the first degrees of its kind in the U.S., this program will equip you with the knowledge you'll need to design computational systems that display "human-like intelligence" such as the ability to learn from experience, interpret sensory input, and more



## AI AT LIU: A ONE-OF-A-KIND EXPERIENCE

LIU has collaborated with Fortune 50's Dassault Systèmes, a global leader in 3D design and engineering software, to work on pioneering artificial intelligence and digital engineering technologies. The partnership will promote research, education, and training through an advanced learning lab and design center.

The Dassault Systèmes technology is an important element to LIU's Artificial Intelligence program, but also offers students studying a wide variety of subjects the chance to engage in real-world solutions through our new, state-of-the-art digital simulation lab. This partnership is revolutionizing the tools used across all of our programs, including artificial intelligence for market and supply chain forecasting, computer modeling of the brain for psychology, and 3D dissection tables for health professions.

## ROC NATION SCHOOL OF MUSIC, SPORTS & ENTERTAINMENT

**NEW!** LIU has partnered with Roc Nation, the premier global entertainment company founded by superstar and Brooklyn native Jay-Z, to form a unique school to educate the next generation of industry changemakers.

The Roc Nation School of Music, Sports & Entertainment will prepare students for a wide range of careers in performance, entrepreneurship, all aspects of music, and sports business management.

Students will engage with university professors, alongside visiting guest artists and lecturers, while participating in immersive internships, ensuring they graduate with both hands-on experience and a network of professional contacts.

LIU's Roc Nation offers the following programs:

### Undergraduate

- **Applied Music (BA)**
- **Music Technology, Entrepreneurship & Production (BFA)**
- **Sports Communication & Marketing (BA)**
- **Sports Management (BS)**
- **Vocal Performance (BM)**

### Postgraduate

- **Sports Management (MS)**

# PROGRAMS

## Undergraduate Programs

Degree category and name	Award	LIU Brooklyn	LIU Post
<b>Business</b>			
Accountancy	BS	•	•
Business Administration	BBA	•	•
Business Administration	BS		•
Economics	BA		•
Entrepreneurship	BS	•	•
Fashion Merchandising	BS		•
Finance	BS	•	•
Marketing	BS	•	•
Sports Communication & Marketing	BA	•	•
Sports Management	BS	•	•
<b>Digital Arts and Technology</b>			
Digital Arts and Design	BFA		•
Digital Game Design and Development	BFA		•
Media Arts (Digital Art & Design)*	BA	•	•
Music Technology, Entrepreneurship & Production	BFA	•	•
<b>Education</b>			
Adolescence Education: Biology	BS		•
Adolescence Education: English	BS		•
Adolescence Education: Mathematics	BS		•
Adolescence Education: Social Studies	BS		•
Childhood/Early Childhood Education	BS		•
Childhood/Special Education (Grades 1-6)	BS		•
Early Childhood Education/Special Education (Birth - Grade 2)	BS		•
Health Education & Physical Education	BS		•
<b>Health Professions and Sciences</b>			
Biochemistry*	BS	•	•
Biology*	BS	•	•
Biomedical Science: Clinical Lab Science - Generalist*	BS		•
Communication Science Disorders	BS	•	•
Exercise Science and Wellness*	BS	•	•
Health Sciences	BS	•	•
Nursing	BS	•	•
Pre-Pharmacy* (Doctor of Pharmacy Professional Program - 6 years)	PharmD	•	•
Psychology	BA	•	•
Radiologic Technology	BS		•
Respiratory Care	BS	•	•
Social Work	BS	•	•
Speech Language Pathology and Audiology	BS		•
Veterinary Technology	BS		•
<b>Humanities and Social Sciences</b>			
Communications	BS		•
Criminal Justice	BA		•
English	BA		•
Forensic Science*	BS		•
Global Studies	BA	•	•
International Relations & Diplomacy	BA	•	•
Journalism	BFA	•	•
Political Science	BA	•	•
<b>Science, Technology and Engineering</b>			
Artificial Intelligence*	BS	•	•
Computer Science*	BS	•	•
Data Analytics*	BS	•	•
Digital Engineering	BE	•	•
Mathematics*	BS		•
<b>Visual and Performing Arts</b>			
Acting for Theatre, Film and Television	BFA	•	•
Applied Music	BA	•	•
Art	BFA		•
Broadcasting	BFA		•
Film	BFA		•
Film and Television	BFA	•	•
Music	BS		•
Theatre Arts	BA, BFA		•
Vocal Performance	BM	•	•

## Graduate Programs

Degree category and name	Award	LIU Brooklyn	LIU Post
<b>Business</b>			
Business Administration (Accounting, Entrepreneurship, Finance, Human Resource Management, International Business, Management, Management, Management Information Systems, Marketing)*	MBA	•	•
Public Administration	MPA	•	•
Sports Management	MS	•	•
<b>Education</b>			
Childhood/Special Education	MS		•
School Counselor	MS		•
<b>Health Professions and Sciences</b>			
Behavior Analysis	MA		•
Biomedical Science*	MS		•
Clinical Laboratory Science*	MS		•
Clinical Mental Health Counseling	MS		•
Drug Regulatory Affairs*	MS	•	•
Exercise Science*	MS	•	•
Health Administration	MPA	•	•
Marriage and Family Therapy	MS	•	•
Mental Health Counseling	MS	•	•
Nutrition*	MS		•
Pharmaceutics: Cosmetic Science*	MS	•	•
Pharmaceutics: Industrial Pharmacy*	MS	•	•
Pharmacology/Toxicology*	MS	•	•
Psychology	MA	•	•
Public Health	MPH	•	•
School Psychology	MSED	•	•
Social Work	MSW	•	•
Speech-Language Pathology	MS	•	•
<b>Humanities and Social Sciences</b>			
Creative Writing	MFA	•	•
Criminal Justice	MS		•
<b>Science, Technology and Engineering</b>			
Artificial Intelligence*	MS	•	•
Computer Science*	MS	•	•
Data Analytics & Strategic Business Intelligence*	MS	•	•
Management Engineering*	MS		•
<b>Visual and Performing Arts</b>			
Writing and Producing for Television	MFA	•	•

\*STEM-Designated Degree Program: May qualify international students to extend their post-graduation stay in the USA through Optional Practical Training (OPT)

## LIU Global

This international course of study focuses on the world's most pressing issues, seen through the lenses of Governance, Culture, Ecology and Economics, with extensive experiential learning and intensive training in research and writing. LIU Global students spend six semesters studying outside of the United States, first in Latin America; then Europe; and then Australia or China. Your senior year independent research internship is conducted in a country of your choosing, before returning to the LIU Brooklyn campus for the final semester to complete your senior research theses.

## Entry Requirements

Undergraduate	TOEFL (IBT)	IELTS	Pearson PTE (accepted, but not recommended)	Duolingo	GPA
General	75	6.0	50	100	3.0

Graduate	TOEFL (IBT)	IELTS	Pearson PTE (accepted, but not recommended)	Duolingo	GPA
General	79	6.5	58	105	2.5-3.0 (varies by program)

Program-Specific					
Artificial Intelligence MS	75	6.0	50	100	2.75
Data Analytics & Strategic Business Intelligence and Computer Science	75	6.0	50	100	3.0
Clinical Lab Sciences	90	7.0	66	130	3.0

## ENGLISH LANGUAGE COURSES

### LIU English Language Institute (ELI): On Campus

If you do not yet have an official English score or do not meet the entry requirements for your LIU degree program, you may also attend LIU's English Language Institute. LIU's ELI courses are available on campus prior to entering your program. Course duration will be dependent on LIU's assessment of your language level. When you reach the necessary level for your program of choice, you will be able to progress into your degree studies.

#### LIU English Language Institute (ELI): On Campus

No official score required; course duration dependent on LIU language assessment

## SCHOLARSHIPS AVAILABLE!

New undergraduate students are eligible for merit-based scholarships up to **\$30.250 per year**.

### #YOUAREWELCOMEHERE

Long Island University places a distinct importance on inclusion and safety, taking all possible steps to help ensure an exceptional experience while living and learning on campus. Join in on the conversation via social media to find out more about the ongoing campaign, letting the international community and future students around the world know that **#YouAreWelcomeHere**



For a full list of programs, visit  
[liu-international.com/programs](https://liu-international.com/programs)

# HOW TO APPLY

If you would like to apply to study at LIU, you will need to complete an application form and submit the relevant documentation.

We are always happy to answer your questions and help with your application. Our advisers speak a variety of languages, and understand several more. We will do our best to contact you in your preferred language.



The internships I've had through LIU have warranted me the opportunity to **gain more hands-on skills** that now I can take from my work at school, I'll take them into the workforce. Being able to communicate, manage my time, lead others, and being able to put everything together are **transferable skills I can take into the workforce**.

This summer I interned at the Special Narcotics Prosecutor's Office for the state of New York. And this fall, I'm currently interning at the Office of the Attorney General for the state of New York.

**Camille, Canada**  
**Political Science**



**We have our own Pharmacy building** and inside there are lounges. In those lounges we get to study, and along with that there's the library facility and other labs. In the labs we would have recitation and **we work together with our other colleagues** to be able to figure out what's going on with the case studies that were given from day to day.

I want to teach, so I want to come back to Long Island University and end up being a professor, hopefully maybe a dean one day.

**Mirna, U.S.**  
**Pharmacy**

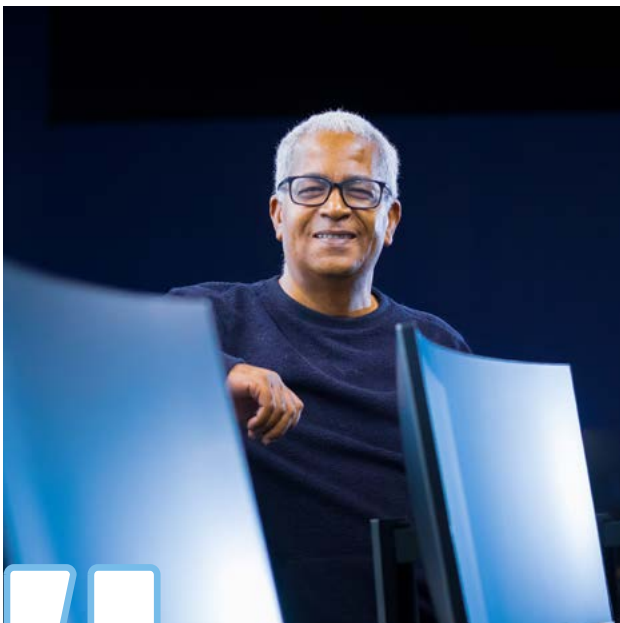


### Apply online

[liu-international.com/admissions/apply#/](https://liu-international.com/admissions/apply#/)

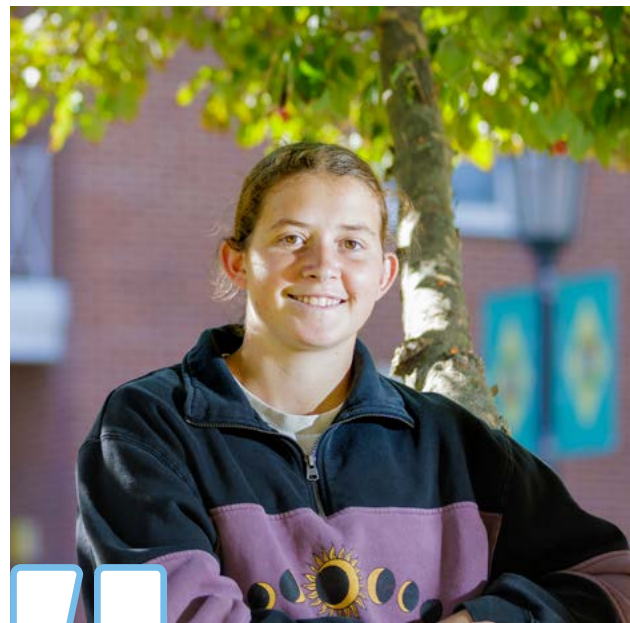
### Apply via a local counselor

Please contact your counselor if you have any questions.



We have students from so many countries represented here. The **diversity of the campus reflects the diversity of New York City**, and it's special because we have connections with the industry across the bridge from here. The most interesting part of studying at LIU is that you are focused on project-based learning and experiential learning. These are the drivers of the education and the training that you're going to get to secure an internship. **I work with international students one by one to secure internships during the summer** and to secure internships after they finish their plans of study.

**Mohammed Ghriga, PhD**  
**Chair of the Department of Computer Science,**  
**Digital Engineering, and Artificial Intelligence**



Post is a very nice campus, I will say. **I haven't been immersed in an environment like this before**, so you don't really know what it's like coming in. But already I've had a really great time. My dorm building is a community. People are throwing events.

I know university here is different to back home. So, I'm learning a lot from a wide variety of areas. I'm someone who has a curiosity for knowledge and I'm finding that really helpful to learn about everything else **I can and continue developing foundational skills like writing and public speaking.**

**Isabella, Australia**  
**BFA Film**



## Getting Around

**LIU Brooklyn** The campus is walkable and the nearby DeKalb Ave subway station quickly goes to Manhattan or other parts of Brooklyn.

**LIU Post** Students can go from New York City to Long Island from Penn Station or the Atlantic Terminal on the Long Island Rail Road (LIRR). There is a 40-minute ride to Hicksville where an LIU Post shuttle takes students to and from the university campus every 20 minutes.

New York City is central to many other great American cities that can be easily accessed by affordable train rides from Manhattan. Or, a flight can be booked at one of three major airports. We encourage students to explore the U.S.A. with their friends during holidays and breaks.

### Distance from Penn Station or Grand Central to other train stations:

- Newark, NJ – 25 min
- Philadelphia, PA – 1.5 hours
- Baltimore, MD – 3 hours
- Providence, RI – 3 hours
- Washington, DC – 3.5 hours
- Boston, MA – 4 hours



[liu-international.com](http://liu-international.com)

This brochure is issued for the general guidance of students considering entry to Long Island University from 2025.

The information is correct at the time of going to press, and the programs and services described herein are those which Study Group is planning to offer. However, Study Group reserves the right to amend, add or remove any program and/or services set out in this brochure and/or the timetable, delivery, content syllabi, and assessment of such programs.

The University (where applicable) also reserves the right to amend the regulations governing those programs without prior notice. Study Group therefore strongly recommends that immediately prior to making any application to Study Group or accepting any offer from Study Group, students should refer to the most up-to-date version of the program descriptions and specifications and the regulations on the Long Island University website: [liu-international.com](http://liu-international.com).

Study Group also reserves the right to make variations to the content and method of delivery of the programs and services, to discontinue programs and services and/or to combine and merge programs, if such action is reasonably considered to be necessary by Study Group. Applicants to Study Group programs will be notified as soon as practicable of any material changes likely to have a bearing on their applications, such as cancellation of, or major modification to programs offered, changes to accommodation provision, or fees and charges to be levied where applicable. Neither the University nor Study Group shall be liable for any errors or omissions that may be contained.

Study Group is a global leader in preparing students for international academic success and rewarding careers through a life changing learning experience. We offer customized programs across higher and language education, starting from high school to life-long learning. To learn more, please visit [studygroup.com](http://studygroup.com).