



ROYAL  
HOLLOWAY  
UNIVERSITY  
OF LONDON



Royal Holloway International Study Centre

Where global citizens  
become **future leaders**

[royalholloway.ac.uk/isc](http://royalholloway.ac.uk/isc)



# UK study experience

We introduce our graduates to the world stage with a globally recognised degree

"Welcome to Royal Holloway International Study Centre (ISC). By studying with us, you join a thriving community of international students who have all made the same decision, to broaden horizons and invest in a better future for yourselves, and the wider world, through education. This prospectus provides details of the programmes available and what you will experience living and learning on a spectacular campus, at a world-class university, recognised for its leading research and international excellence, while living close to London's global industry hubs. As one of the first universities in the UK to accept women, we have a history of shaping social change through education. We in turn challenge our students to ask, how will you express your values and make a difference to the world around you?"

All the staff at the ISC are here to support you in preparing for your future studies at Royal Holloway. ISC academic teams are made up of subject matter experts who are also specialists in working with international students on Pathway Programmes. The ISC Student Experience Team is here to ensure that all students are happy, safe and on track to succeed. Our role as ISC staff members is to help you achieve this goal. Your responsibility, as a student, is to work hard, attend and engage in your course and to express your creativity, confidence, and passion for your subject in your work here at the ISC."

**Benjamin Feben**  
Centre Director  
Royal Holloway International Study Centre

## **British degree, global influence**

Royal Holloway, University of London combines the finest British education, heritage and culture with international networks in academia, research and business.

## **Where students thrive**

Our friendly and safe community provides the perfect environment to immerse yourself in your studies and enjoy new activities.

## **Creating values-forward future leaders**

The university has strong academic rankings and many of our graduates establish successful careers. Our alumni include scientists, business leaders, creators and influencers all over the world.

# TOP 25% OF UK UNIVERSITIES FOR RESEARCH

THE, REF, Overall ranking of  
institutions, 2022



## Contents

Explore a brilliant study location	2
Your life at Royal Holloway	3
Discover your student home	4
The International Study Centre	5
International Foundation Year	6
International Year One	10
Pre-Masters Programme	12
Accommodation	15
How to apply	18





# Explore a brilliant study location

At Royal Holloway, students benefit from the best of both worlds. Studying on a beautiful and close-knit campus means you can join student groups and clubs, while being close to London means you can also explore the city's cultural and artistic attractions. There is a variety of opportunities, whatever your interest.

## Beautiful campus

Studying on one of the world's most beautiful campuses will inspire and enable you to focus on your studies. Situated in 135 acres of parkland, Royal Holloway boasts an iconic, green campus, with all the facilities you will ever need within easy reach.

## Close to London

Getting to the centre of London from the university campus in Egham, Surrey takes just 40 minutes by train, meaning students have great access to many famous attractions, international sports and entertainment venues. Additionally, Royal Holloway is located just seven miles from Heathrow Airport, making international travel as easy as can be.





# Your life at Royal Holloway

## International community

We are proud to welcome you to an international, diverse and inspiring student community. With students from over 130 countries studying here and 100,000 + alumni in 165 countries, international students are more welcome than ever.

## Keep yourself entertained

The university has a proud tradition of music and performance. You can join a band or choir, perform in musical theatre or the opera. Alternatively, you can enjoy any hobby you like through the Students' Union.

[rhulisc.com/student-life](http://rhulisc.com/student-life)



*"The beautiful campus, professors, tutors, students, friends, they're so supportive. I love the atmosphere, helping each other and respecting each culture, each background. That is the part I really love in Royal Holloway."*

**Shoka from Malaysia**  
Studied International Foundation Year  
and progressed to BA Human Geography

**100+ STUDENT-  
RUN SOCIETIES,  
FROM COMPUTING  
TO BAKING**

**OVER 35 VARSITY  
SPORTS CLUBS,  
FROM FOOTBALL  
TO FENCING**



# Discover your student home

## Culturally iconic

Home to the spectacular Founder's Building and famous Picture Gallery, the historic campus is frequently named as one of the most beautiful campuses in the world. Since the original building was opened by Queen Victoria in the late 1800s, Royal Holloway has been home to many generations of learning.

## New state-of-the-art facilities

Royal Holloway has been investing in new campus buildings and student services to support your development. The Beatrice Shilling Building is the latest space to open its doors for more learning, with a new lecture theatre, seminar rooms, research areas and additional core working spaces. It is also the home of the Department of Electronic Engineering.

## Great study resources

Our flagship Library and Student Services Centre, the Emily Wilding Davison Building, opened in September 2017. It sits in the heart of the university campus and contains everything you'll need to succeed as a student at Royal Holloway, from a library and careers hub to a shop, café and exhibition space.

[rhulisc.com/royal-holloway](http://rhulisc.com/royal-holloway)



*"The people here have honestly been so great. They've been so welcoming. I've really felt at home, if I need anything or need any support, it's been absolutely fantastic. And working with the International Study Centre in general has been fantastic. They've been really encouraging and supportive."*

**Megan from South Africa**  
Studying Pre-Masters Programme in  
Business and Management



# The International Study Centre

Here at the International Study Centre, we provide academic tuition and language support for international students so they can progress to their degree at Royal Holloway.

## University-style teaching

With our expertise in international education, we will provide you with the skills and confidence needed to begin your university studies. At the International Study Centre, you will be introduced to the type of curriculum and teaching style used in British universities, gaining exposure to small-group and individual tutorials, seminar-style classes and larger-group lectures before you begin your university studies.

## Access to university facilities

As a student of the International Study Centre, you will be part of the Royal Holloway community from the day you start your programme, and can use all of the facilities on campus. From the library to the Students' Union, you will benefit from all aspects of university life, as well as get the chance to familiarise yourself with the campus and town you will be studying in ahead of starting your degree.

## Support and advice

We understand that moving to a new country is a significant change and we provide ongoing support to ensure you settle into your new surroundings. Our Student Support team is available to speak to students about any matters unrelated to studies, from adjusting to your new life in the UK, to health and personal matters. You will also receive continuing academic support to help you get the most from your education.

We will even be here to help you choose the right degree programme – advising on entry requirements, career opportunities and suitable subjects so you can achieve your goals. When you start your pathway programme you will have access to regular one-to-one support from your Academic tutors and Progress Coaches to ensure you succeed in your studies.

## Careers and employability

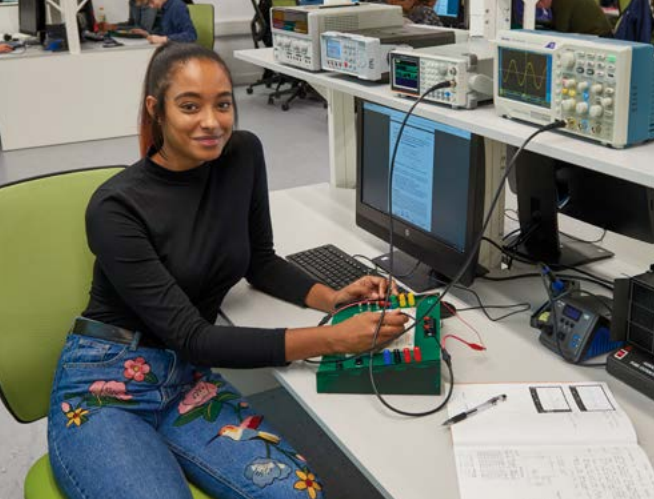
The International Study Centre offers a variety of activities, all with the aim of helping you become a highly skilled, self-aware, confident and employable graduate. Employability services, and jobs fairs connect you to employers and the chance to develop your experience, and understanding of the opportunities in your specialist field.

These skills are mapped to and embedded in your course and many degree programmes offer integrated work opportunities within your studies. Royal Holloway has excellent graduate outcomes and our students are the values-forward, leaders of tomorrow.

Students on selected pathways also have the opportunity to participate in competitions pitching innovations and solutions to sector-leading businesses, from top motorsport teams to global fast-food brands. Previous shortlisted winners have also been offered opportunities to attend summer internships interviews.

## Visa opportunities

Save time and money by applying for a combined visa. You can apply for one visa to study for the length of International Year One as well as a degree course. Students applying to the Pre-Masters programme can apply for a combined visa to include a masters degree course too. Experience a seamless transition from programme to degree, with one visa for the full length of study.



# International Foundation Year

The International Foundation Year is a two semester programme that will provide you with the support to progress to the first year of your chosen undergraduate degree.

**You can choose from three International Foundation Year pathways:**

- Social Science, Arts and Humanities
- Management and Economics
- Sciences

## ✓ KEY FACTS

### COURSE LENGTH:

Two semesters: September - July,  
November - August or January - August

### ENTRY REQUIREMENTS:

#### Academic\*

Students normally need to have a minimum of 12 years of schooling with good grades

#### English language

Academic IELTS for UKVI 5.0 overall  
(minimum 5.0 in writing and no lower than 4.0 in other skills)

#### Age

Students should be aged 17 or older at the start of their programme

\*Please visit our website for country specific entry requirements

### English language support

If you do not meet the required IELTS scores to start the International Foundation Year, you can improve your level of English by studying an English Language Preparation programme.

Visit [rhulisc.com/english-language-preparation](https://rhulisc.com/english-language-preparation) for more information.

[rhulisc.com/international-foundation-year](https://rhulisc.com/international-foundation-year)







## SOCIAL SCIENCE, ARTS AND HUMANITIES

Our unique combination of creative arts and humanities disciplines, along with a wealth of rich academic resources, research expertise, cultural opportunities and links with related companies provides a dynamic platform for developing your talents.

This pathway will prepare you for a wide range of progression degrees at Royal Holloway.

### Core modules

- Academic English Skills
- Literature and Culture
- Social Science
- Collaboration for Sustainable Futures

### Pathway specific modules

- Film and Media
- Music
- Politics

### Progression degrees

- BA Ancient History
- BA Ancient History and Philosophy
- BA Classical Archaeology and Ancient History
- BA Classical Studies
- BA Classics
- BA Comparative Literature and Culture
- BA Comparative Literature and Culture and Drama
- BA Comparative Literature and Culture and English
- BA Comparative Literature and Culture with History of Art and Visual Culture
- BA Digital Media Culture and Technology
- BA Drama with Film
- BA Drama with Philosophy
- BA Drama and Theatre Studies
- BA English
- BA English and American Literature

- BA English and Creative Writing
- BA English and Drama
- BA English and Film Studies
- BA English and History
- BA Film Studies
- BA Film, Television and Digital Production
- BA Geography
- BA Greek
- BA History
- BA History and Music
- BA History and Philosophy
- BA History of Art and Visual Culture and Comparative Literature and Culture
- BA Human Geography
- BA International Relations
- BA Latin
- BA Liberal Arts
- BA Liberal Arts with a language year abroad
- BA Modern Languages
- BA Modern Languages and Comparative Literature and Culture
- BA Modern Languages with History of Art and Visual Culture
- BA Modern Languages with International Relations
- BA Music and English
- BA Music and Philosophy
- BA Music and Sound Design for Film, Television and Interactive Media
- BA Music and Theatre
- BA Music with French/ German/ Italian/ Philosophy/ Political Studies/ Spanish
- BA Philosophy
- BA Politics
- BA Politics and International Relations
- BA Politics and International Relations and Philosophy
- BA Politics with Philosophy

- BA Sociology and Philosophy
- BA Video Games Art and Design
- BMus Music
- BSc Criminology and Sociology
- BSc (Hons) Physics with Music
- LLB Law
- LLB Law with Criminology
- LLB Law with International Relations
- LLB Law with Politics
- LLB Law with Sociology

For more information and a full list of progression degree options, visit [rhulisc.com/international-foundation-year](https://www.rhulisc.com/international-foundation-year)





# International Foundation Year

## MANAGEMENT AND ECONOMICS

Make your impact on the global world of business. This pathway will prepare you for a range of management and economics-related degrees at the School of Business and Management at Royal Holloway.

This pathway leads to a number of degrees at Royal Holloway in fields related to management and economics. It offers the perfect option if you're planning a career in business, finance or government.

### Core modules

- Academic English Skills
- Business
- Economics
- Core Maths 1
- Core Maths 2 or Digital Technologies
- Collaboration for Sustainable Futures

### Progression degrees

- BSc Accounting and Finance
- BSc Business and Management
- BSc Economics and Management
- BSc Economics and Mathematics
- BSc Economics, Politics and International Relations
- BSc Environment and Social Change

- BSc Finance and Mathematics
- BSc Management with Accounting
- BSc Management with Entrepreneurship
- BSc Management with Human Resources
- BSc Management with International Business
- BSc Management with Marketing
- BSc (Econ) Economics
- BSc (Econ) Economics with Music
- BSc (Econ) Economics with Political Studies
- BSc (Econ) Financial and Business Economics

For more information and a full list of progression degree options, visit [rhulisc.com/international-foundation-year](http://rhulisc.com/international-foundation-year)



## SCIENCES

Learn with international researchers and lead the way. The Sciences pathway will prepare you for an intensive science-related degree at Royal Holloway. The university offers a dynamic research environment, which is essential in maintaining academic excellence at all levels, and this provides a strong base for further research growth.

This pathway is split into two routes, the Life Sciences and the Environment route, and the Engineering, Physical and Mathematical route. Your chosen progression degree will determine which route you take and the modules that you will study.

### Core modules

#### Life Sciences and the Environment route

- Academic English Skills
- Biology
- Core Maths 1
- Core Maths 2 or Chemistry
- Environmental Science or Psychology
- Collaboration for Sustainable Futures

#### Engineering, Physical and Mathematical route

- Academic English Skills
- Pure Maths
- Applied Mathematics
- Programming
- Physics
- Collaboration for Sustainable Futures

### Progression degrees

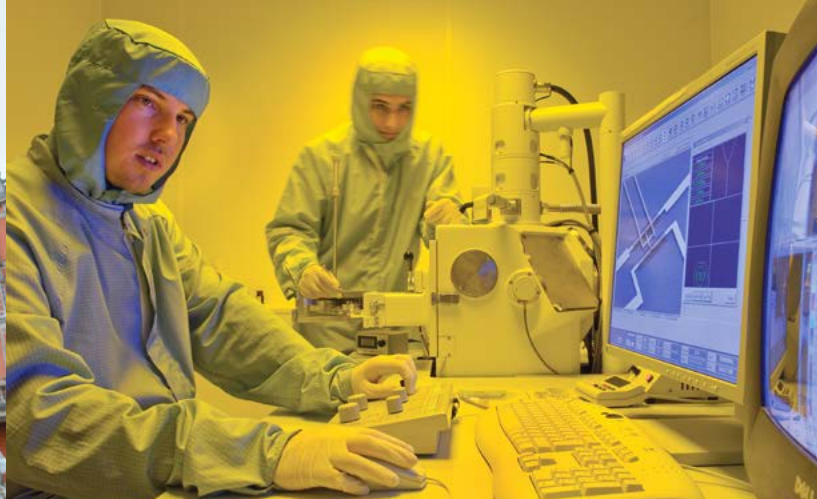
- BEng/MEng Computer Systems Engineering with a Year in Industry
- BEng/MEng Electronic Engineering
- BEng/MEng Electronic Engineering with a Year in Industry



AACSB Accredited on all Business Degrees  
(AACSB International - The Association to Advance Collegiate Schools of Business)



(Chartered Institute of Management Accountants)



- BSc Applied Psychology
- BSc Astrophysics
- BSc Biochemistry
- BSc Biochemistry with a Year in Industry
- BSc Biology
- BSc Biology with a Year in Industry
- BSc Biomedical Sciences
- BSc Biomedical Sciences with a Year in Industry
- BSc Computer Science
- BSc Computer Science with a Year in Industry
- BSc Computer Science and Mathematics
- BSc Computer Science (Artificial Intelligence)
- BSc Computer Science (Artificial Intelligence) with a Year in Industry
- BSc Computer Science (Cyber Security)
- BSc Computer Science (Cyber Security) with a Year in Industry
- BSc Computer Science (Software Engineering)
- BSc Computer Science (Software Engineering) with a Year in Industry
- BSc Criminology and Psychology
- BSc Ecology and Conservation
- BSc Ecology and Conservation with a Year in Industry
- BSc Environmental Geology
- BSc Environmental Geology with a Year in Industry
- BSc Genetics
- BSc Genetics with a Year in Industry
- BSc Geography
- BSc Geology
- BSc Geology with a Year in Industry

- BSc Mathematics
- BSc Mathematics and Physics
- BSc Mathematics with Statistics
- BSc Medical Biochemistry
- BSc Medical Biochemistry with a Year in Industry
- BSc Physical Geography
- BSc Physics
- BSc Physics with Particle Physics
- BSc Physics with Philosophy
- BSc Psychology
- BSc Psychology, Clinical Psychology and Mental Health
- BSc Psychology, Clinical and Cognitive Neuroscience
- BSc Psychology, Development and Developmental Disorders
- BSc Theoretical Physics
- BSc Zoology
- BSc Zoology with a Year in Industry
- MSci Mathematics
- MSci Physics

For more information and a full list of progression degree options, visit [rhulisc.com/international-foundation-year](http://rhulisc.com/international-foundation-year)



**83% IN GRADUATE LEVEL EMPLOYMENT OR FURTHER STUDY 15 MONTHS AFTER LEAVING ROYAL HOLLOWAY**

*(Guardian University Guide, 2025)*

**ALL BUSINESS AND MANAGEMENT UNDERGRADUATE DEGREES AVAILABLE WITH A YEAR IN BUSINESS**



IET Accredited on all Electronic Engineering degrees (IET - The Institution of Engineering and Technology)



BCS Accredited on all Computer Science Degrees (BCS - The Chartered Institute for IT)



All Biology degrees are accredited by Royal Society of Biology



# International Year One

The International Year One is a programme consisting of two semesters, providing a tailored curriculum, that aims to prepare you to join the second year of your undergraduate degree.

**You can choose from four International Year One pathways:**

- Business and Management
- Economics
- Computer Science
- Electronic Engineering

**✓ KEY FACTS**

**COURSE LENGTH:**  
Two semesters: September - July, November - August or January - August

**ENTRY REQUIREMENTS:**

**Academic\***  
Good high school graduation grades or equivalent, plus one year of further study

**English language**  
Academic IELTS for UKVI 5.5 overall (minimum 5.5 in all components)

**Age:**  
Students should be aged 17 or older at the start of their programme

\*Please visit our website for country specific entry requirements

**English language support**

If you do not meet the English language requirements to study, you can improve your level of English by studying an English Language Preparation programme.

Visit [rhulisc.com/english-language-preparation](http://rhulisc.com/english-language-preparation) for more information.

**COMBINED VISA**

Save time and money, and experience a seamless transition to university success, by studying this programme and the remainder of your degree with one visa. Opting for this means you will benefit from just one visa required for the whole length of your study and a range of other benefits.

[rhulisc.com/international-year-one](http://rhulisc.com/international-year-one)





## BUSINESS AND MANAGEMENT

A pathway leading to management undergraduate degrees with marketing, accounting, digital innovation and more, the International Year One in Business and Management will prepare students to join their second year at Royal Holloway.

### Core modules

- Academic English Skills
- Foundation in Digital Enterprise
- Financial Accounting
- International Business
- Interpreting Management
- Management First
- Marketing, Markets and Consumption
- Organisation Studies
- Quantitative Methods

### Progression degrees

- BSc Business and Management
- BSc Management with Accounting
- BSc Management with Entrepreneurship
- BSc Management with Human Resources
- BSc Management with International Business
- BSc Management with Marketing

## COMPUTER SCIENCES

A pathway leading to undergraduate degrees in computer sciences and artificial intelligence, the International Year One in Computer Sciences will prepare students to join the second year of their studies at Royal Holloway.

### Core modules

- Academic English Skills
- Internet Services
- Machine Fundamentals
- Mathematics for Computer Science
- Object Orientated Programming 1
- Object Orientated Programming 2
- Programming Laboratory
- Software Design

### Progression degrees

- BSc/MSci Computer Science (Artificial Intelligence)
- BSc/MSci Computer Science (Cyber Security)
- BSc/MSci Computer Science (Software Engineering)
- BSc Computer Science (Year in Industry)
- BSc Computer Science Artificial Intelligence (Year in Industry)
- BSc Computer Science
- BSc Computer Science Cyber Security (Year in Industry)
- BSc Computer Science Cyber Security
- BSc Computer Science Software Engineering (Year in Industry)

For more information and a full list of progression degree options, visit [rhulisc.com/international-year-one](http://rhulisc.com/international-year-one)



## ECONOMICS

A pathway leading to one of three undergraduate degrees specialising in economics, the International Year One in Economics will prepare students to join their second year of studying at Royal Holloway.

### Core modules

- Academic English Skills
- Applied Economics and Policy
- Data Skills for Economics
- Mathematics for Economics
- Principles of Economics

### Progression degrees

- BSc (Econ) Economics
- BSc (Econ) Economics with a Year in Business
- BSc (Econ) Financial & Business Economics

## ELECTRONIC ENGINEERING

A pathway leading to undergraduate degrees in electronic or computer systems engineering, the International Year One in Electronic Engineering will prepare students to join their second year at Royal Holloway.

### Core modules

- Academic English Skills
- Communications Engineering
- Creative Engineering Team Project
- Electronic Circuits and Components
- Internet Services
- Mathematics for Engineers 1
- Mathematics for Engineers 2
- Programming in C++

### Progression degrees

- BEng/MEng Computer Systems Engineering
- BEng/MEng Electronic Engineering
- BEng/MEng Computer Systems Engineering (Year in Industry)
- BEng/MEng Electronic Engineering (Year in Industry)

**6<sup>TH</sup> FOR STUDENT  
EXPERIENCE IN  
THE UK ELECTRONIC  
ENGINEERING  
DEPARTMENTS**

*(The Times and Sunday Times  
Good University Guide, 2025)*




# Pre-Masters Programme

The Pre-Masters Programme takes place over two terms and is designed to give you all the skills and abilities you'll need to successfully study a postgraduate course at Royal Holloway.

**You can choose from three Pre-Masters pathways:**

- Business and Management
- Computer Science and Electronic Engineering
- Arts, Humanities, Economics and Sciences

 **KEY FACTS**

**COURSE LENGTH:**  
Two terms: September - July or March - August

**ENTRY REQUIREMENTS:**  
**Academic\***  
Students will need to have successfully completed an appropriate first qualification in their resident country.

**English language**  
Academic IELTS for UKVI 5.5 overall (minimum 5.5 in all components) or equivalent

**Age:**  
Students should be aged 20 or older at the start of their programme

\*Please visit our website for country specific entry requirements

**English language support**

If you do not have the required level of English language to start the Pre-Masters Programme, you can take an English Language Preparation programme before you start your academic programme.

Visit [rhulisc.com/english-language-preparation](https://rhulisc.com/english-language-preparation) for more information.

## COMBINED VISA

Save time and money, and experience a seamless transition to university success, by studying this programme and the remainder of your degree with one visa. Opting for this means you will benefit from just one visa required for the whole length of your study and a range of other benefits.

[rhulisc.com/pre-masters](https://rhulisc.com/pre-masters)





## BUSINESS AND MANAGEMENT

The Pre-Masters Programme in Business and Management at the International Study Centre can be the first step towards a future in a number of business-related careers.

### Core modules

- Academic English Skills
- Accounting and Finance
- Economics
- Entrepreneurial Innovation and Leadership
- Project Research Skills

### Progression degrees

- MSc Accounting and Financial Management
- MSc Business Analytics
- MSc Digital Marketing
- MSc Engineering Management
- MSc Entrepreneurship and Innovation
- MSc Human Resource Management
- MSc Information Security
- MSc International Business Management
- MSc International Business Management (Marketing)
- MSc Logistics and Supply Chain Management
- MSc Marketing
- MSc Project Management

**85% POSTGRADUATE TAUGHT STUDENTS IN GRADUATE LEVEL EMPLOYMENT OR FURTHER STUDY 15 MONTHS AFTER LEAVING ROYAL HOLLOWAY**

*(Graduate Outcomes Survey (students graduating in 2020) data from Heidi+, the Higher Education Statistics Authority (HESA) data analytics service)*

## COMPUTER SCIENCE AND ELECTRONIC ENGINEERING

A pathway leading to postgraduate degrees in machine learning, artificial intelligence and information security at Royal Holloway.

### Core modules

- Academic English Skills
- Computational Mathematics
- Research Project Skills for Sciences
- Programming

### Progression degrees

- MSc Artificial Intelligence
- MSc Artificial Intelligence (Year in Industry)
- MSc Data Science & Analytics
- MSc Data Science & Analytics (Year in Industry)
- MSc Information Security
- MSc Information Security (Year in Industry)
- MSc Machine Learning
- MSc Machine Learning (Year in Industry)

## ARTS, HUMANITIES, ECONOMICS AND SCIENCES

This Pre-Masters Programme prepares you for a wide range of postgraduate degrees Split into 3 routes, depending on your chosen progression degree students can choose from the Arts and Humanities route, Economics route or Sciences route

### Core modules

- Academic English Skills
- Project Research Skills
- Social Science

### Pathway specific modules

- Communication, Cultures and Heritage – Creative Project
- Data Skills for Researchers
- Sustainability for Life and Environmental Sciences
- Advanced Mathematics for Economics

### Progression degrees

- MA Ancient History
- MA Classical Art & Archaeology
- MA Classics
- MA Creative Writing
- MA Crusader Studies
- MA English Literature
- MA European Philosophy
- MA History
- MMus Music (Performance)
- MSc Economics
- MSc Elections, Campaigns & Democracy
- MSc Engineering, Geology and Hydrogeology
- MSc International Public Policy and Development
- MSc International Relations
- MSc International Security
- MSc Media, Power & Public Affairs
- MSc Political Philosophy
- MSc Terrorism & Counter-Terrorism Studies

For more information and a full list of progression degree options, visit [rhulisc.com/pre-masters](http://rhulisc.com/pre-masters)



*"I like the campus here and the facilities. Everything around helps me to study and get into my course. The library here is great and it's full of places that help me to study. Living on campus itself is a great experience. I have everything literally I need on campus and I don't need to go out a lot. There is the Students' Union, they organise weekly events, wellbeing, markets and everything."*

**Khaled from Egypt**  
Studying International Foundation  
Year in Social Sciences,  
Arts and Humanities







# Accommodation

During your time at Royal Holloway International Study Centre you can choose to live in allocated student accommodation (known as ‘halls’) or arrange your own private accommodation.

## Living in halls

Living in halls is a big part of the student experience. A dedicated team of residential staff will look after you, ensuring you are provided with a secure and comfortable home throughout your stay. There are many advantages to living on campus. You will experience campus life, as well as an easy access to events and services the campus offers. You will also benefit from the convenience of being within a short walking distance from your accommodation to your classes on campus.

There are several options, depending on your budget and needs, ranging from a shared room with a washbasin, to a private room with its own bathroom.

All study bedrooms in halls are equipped with necessary furniture, including a desk, chair and bed. Please note that some halls may not be available for all start dates.

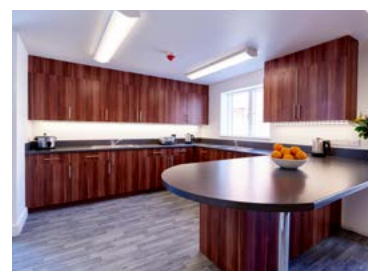
## Private accommodation

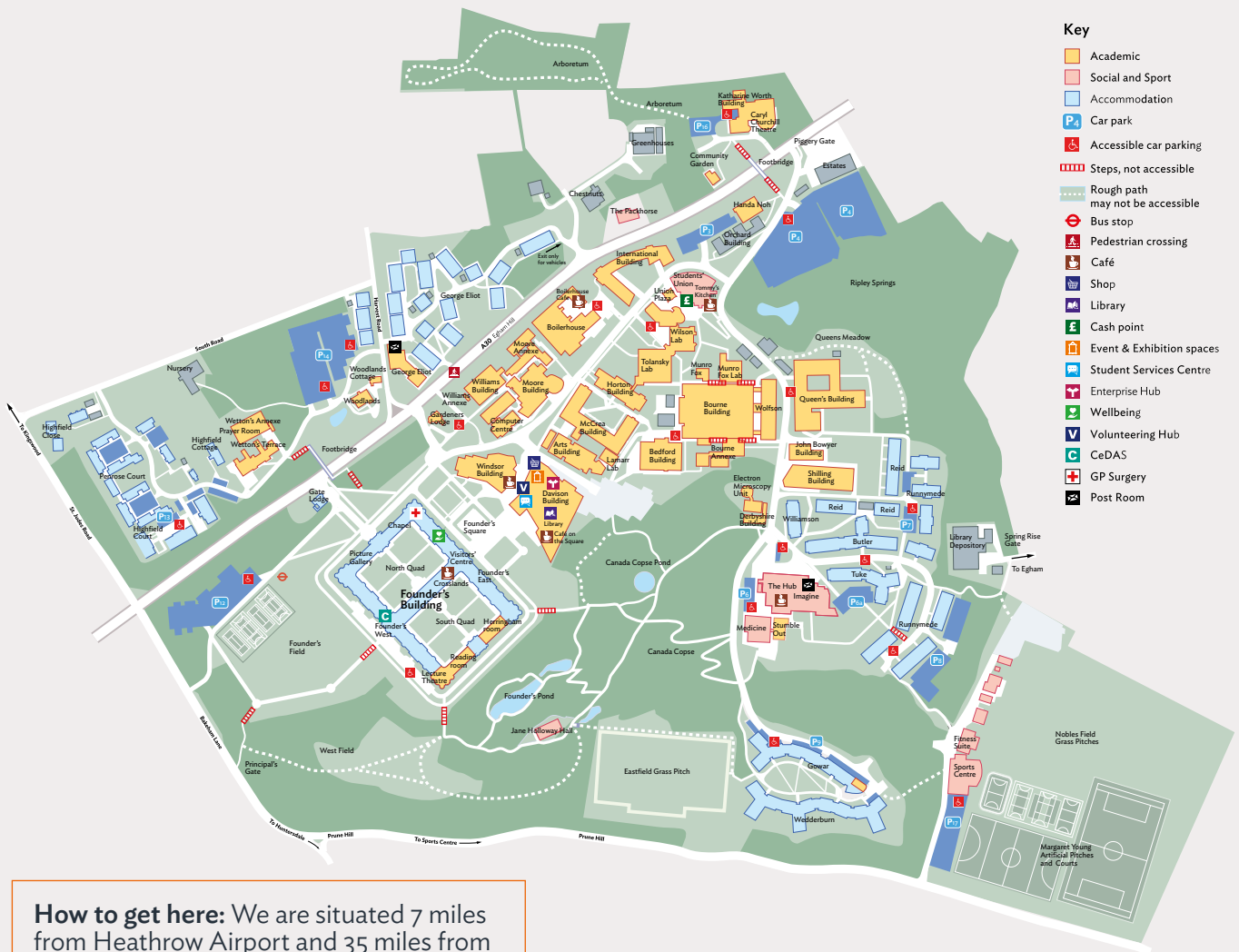
You can arrange your accommodation privately or we can assist you with this process.

Ask your agent or student enrolment advisor for information and how to get started.

If you are choosing private accommodation, it is important that you let us know where you are staying. Please note that you must live less than 60 minutes away from the International Study Centre.

[rhulisc.com/accommodation](http://rhulisc.com/accommodation)





**How to get here:** We are situated 7 miles from Heathrow Airport and 35 miles from Gatwick Airport, as well as 40 minutes away from centre of London by train.

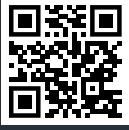
*“I think that’s one of the main features that makes Royal Holloway special as an international student: you feel welcome here.”*

**Omar, from Saudi Arabia**  
Studied International Foundation Year  
and progressed to BSc (Hons)  
Computer Science (Information Security)



## HOW TO APPLY

If you would like to apply to study at Royal Holloway International Study Centre, you will need to complete an application form and submit the relevant documentation. You can either apply through your local education agent or directly via our website. If you are applying directly and have a question, then a Student Enrolment Adviser will be happy to help. They speak a variety of languages and understand several more. You can make an enquiry through the website, visit [rhulisc.com/how-to-apply](https://rhulisc.com/how-to-apply)



- [facebook.com/RoyalHollowayISC](https://facebook.com/RoyalHollowayISC)
- [instagram.com/RoyalHollowayISC](https://instagram.com/RoyalHollowayISC)
- [youtube.com/RoyalHollowayISCUK](https://youtube.com/RoyalHollowayISCUK)

[royalholloway.ac.uk/isc](https://royalholloway.ac.uk/isc)



### Disclaimer

This guide is intended as a general guide for students considering entry to Royal Holloway, University of London International Study Centre from 2025. Royal Holloway, University of London International Study Centre is operated, and its programmes offered by Study Group Limited ('Study Group'). This guide forms no part of any contract between you and Study Group except as provided below. The guide is prepared in advance of the academic year to which it relates and Study Group makes every effort to ensure that the information contained here is accurate.

Although reasonable steps are taken by Study Group to provide the programmes and services described, Study Group cannot guarantee the provision of any programme. Any programme may be altered or withdrawn owing to circumstances beyond Study Group's reasonable control. Such circumstances include (but are not limited to) industrial action, lack of demand, departure of key personnel, change in government policy, withdrawal or reduction of funding, change of law or changes necessitated by pandemic or epidemic.

Study Group will take such steps as are available to it to minimise the effect of any alteration or withdrawal of a programme and we will notify you of such alteration or withdrawal as soon as possible. Such steps may include the offer of a place on an alternative programme. Alternatively you may withdraw your application without any liability for fees (including the enrolment fee).

Please note that Royal Holloway, University of London International Study Centre's website is the most up to date source of information regarding programmes and facilities and we strongly recommend that you always visit the website before making any commitments.

Royal Holloway, University of London and its logo are registered Trade Marks of Royal Holloway, University of London. 'Study Group' and the Study Group logo are registered Trade Marks of Study Group. Unless otherwise stated, all material in this publication is copyright of Study Group. No part of this publication may be reproduced, stored in a retrieval system or transmitted in any form, or by any means, electronic, mechanical, photocopying, recording or otherwise, without the permission of Study Group. For more information, please visit [studygroup.com](https://studygroup.com)

