



University of  
Sheffield

International  
College



**UNIVERSITY  
OF THE YEAR**



[sheffield.ac.uk/international-college](https://sheffield.ac.uk/international-college)

Ambitious  
students are  
**made in  
Sheffield.**

# A Big Sheffield Welcome



Our ambitious students **thrive in our unique College environment.**



Join our **vibrant international community** at the International College, and become a part of the University of Sheffield from day one.



When you enrol at the University of Sheffield International College, **you are welcomed into student life.**



From day one, you can join the University's societies, **get involved with the award-winning Students' Union** or start your own club.



Teachers will monitor your progress and support you to **develop an appropriate pace of study and apply your skills.**



We look forward to welcoming you and helping you on your journey to **become who you are going to be.**



Our **staff are dedicated to supporting you**, providing the best possible introduction to studying in Sheffield.



If you enjoy the great outdoors, **exploring Sheffield's natural scenery is a must.**



Welcome! When you join the **University of Sheffield International College**, you will become a part of the University of Sheffield and our vibrant international community.

We've found that our ambitious students thrive in our unique College environment, which is based on the University's own academic structure and study cycle. Our experienced team of more than 200 academic and professional staff, alongside our excellent teaching facilities, **ensure that you are fully prepared for University life.**

Our staff are dedicated to supporting you, providing the **best possible introduction to studying in Sheffield.** Whatever your ambition, we look forward to welcoming you and helping you on your journey to **become who you are going to be.**

## **Kirsten Bartlett**

College Director

### **Contents**

1. A Big Sheffield Welcome
2. The University of Sheffield
4. Living in Sheffield
6. The International College
8. Campus facilities
10. Accommodation
12. **Undergraduate pathway**
13. **Business, Social Sciences and Humanities**
14. **Science and Engineering**
16. **Undergraduate progression degrees**
18. **Postgraduate pathway**
19. **Business, Social Sciences and Humanities**
21. **Science and Engineering**
22. **Postgraduate progression degrees**
25. Student insurance
25. How to apply

# I'm going to be... in an amazing place to study

Get involved at the University of Sheffield and join a community known for its global reputation of exceptional teaching, impactful research, international outlook and dynamic student experiences.





A world top 100 university, and 12th in the UK by the Times Higher Education World University Rankings 2025



Top university in the Russell Group for student experience and student support

(Daily Mail University Guide 2025)



Ranked 105th globally in the QS World University Rankings 2025



No.1 in the Russell Group for the second year in a row

(National Student Survey 2023 & 2024, based on aggregate responses)



92% of research is world-leading or internationally excellent

(Research Excellence Framework 2021)



Top 20 most targeted UK universities by graduate employers

(High Fliers Research 2024)



No.1 Students' Union in the UK for the seventh year in a row

(Whatuni Student Choice Awards 2017 - 2024)



Six Nobel Prize winners in the fields of Chemistry and Medicine/Physiology



A member of the UK's prestigious Russell Group, one of 24 leading UK universities for research and teaching



Recipient of 5 Queen's Anniversary Prizes, which recognise quality and innovation in research



University of the Year and Best for Student Life, voted by students

(Whatuni Student Choice Awards 2024)



17 subjects ranked in the world top 100

(QS World University Rankings by Subject 2024)



# I'm going to be... living in Sheffield

A community-focused and friendly cultural hub in the north of England, with the Peak District on your doorstep, Sheffield has plenty to experience.

## A student city

Sheffield is England's fifth largest city (*World Population Review 2021*) and is made up of 564,000 people – nearly 60,000 of which are students. This vibrant student community plays an active role in the life and feel of the city.

## A top city for shopping

Meadowhall Shopping Centre is the leading shopping and leisure destination in Sheffield. With over 290 stores, choose from independent shops or big name brands.

## The UK's best city for foodies

As the home of some fab festivals and markets, the city of Sheffield was named as the UK's best foodie hotspot by *Accor 2024*. Whatever you fancy, there's guaranteed to be something to delight your tastebuds in Sheffield.

## A city to discover

When you want to explore, the city welcomes you to – Sheffield doesn't hold back on things to do. Famous for its creativity, the city's music, art and film communities are bustling with activity.

Sheffield is large enough to offer a great range of activities, yet small enough to find your way around quickly and feel part of the community.

## The UK's greenest city

If you enjoy the great outdoors, exploring Sheffield's natural scenery is a must. With 60% of Sheffield a green space, and the Peak District National Park a short bus or train ride away, there are lots of places to hike, climb or have a picnic.



Population of 564,000 people – 60,000 of which are students



One of the UK's top 10 most affordable student cities (*NatWest Student Living Index 2024*)



UK's foodie capital (*Accor 2024*)



Famous for its music, art and digital communities

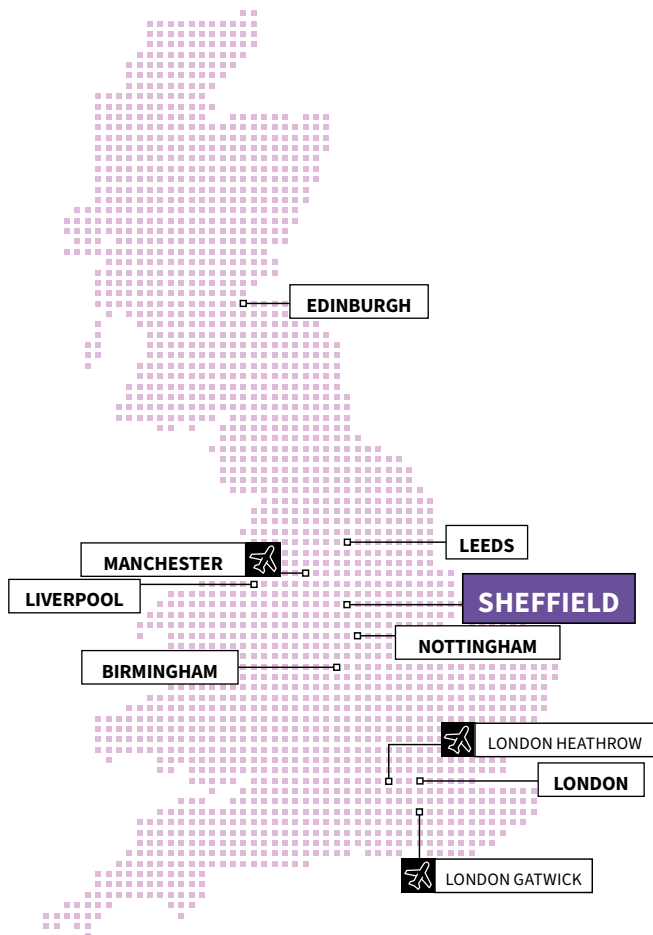


60% of the city is green space



Over 60,000 students are proud to say, "I study in Sheffield."

Sheffield is a friendly multicultural city located in the heart of the UK. Whether you're travelling by road, rail or air, Sheffield's excellent transport links allow you to experience UK life to the full.



**Born in Myanmar. / Made in Sheffield.**

"I'm a big foodie, so I thought food would be a big problem. Coming here, seeing the variety of restaurants that make me really happy and especially the nature, it's really photogenic. Everywhere I go I can whip out my phone and take a few pictures and I'm pretty sure there'll be a nice view somewhere."

**Shin**

*Studied International Foundation Year.  
Progressed to BEng (Hons) Biomedical Engineering.*

**Explore the UK by train from Sheffield to:**



A group of students tell us what they love about studying in Sheffield. See what they get up to in the city centre and the Peak District: [bit.ly/Sheffield\\_city](http://bit.ly/Sheffield_city)



# I'm going to be... studying at the International College

Join the community at the University of Sheffield International College – a dedicated place for ambitious international students to prepare for the challenges of academic life.



## An extraordinary learning environment

At the University of Sheffield International College, we provide tailored pathway programmes for international students. During your time with us, we'll help you to:

- **Reach the academic level you need** in your chosen subject
- **Gain the study skills and independent learning techniques** that will be vital to your success at both the International College and on your chosen university degree
- **Develop your English language ability** so you can express yourself clearly, take part in lessons, and get the most out of your studies
- **Adapt to the UK education model** by studying in a semester-based system, aligned closely to the University's own teaching style.

Programmes at the International College are designed in collaboration with the University and are delivered by Study Group. Experts in international education, Study Group staff know how to support international students as they adjust to the UK education system. Once you have completed your programme successfully, you will progress to your chosen degree and be taught by University of Sheffield staff.



## Pre-courses

### Prepare for Success

Join our free online preparation course designed to give you a head start before beginning your academic pathway programme. The course covers three essential areas of life, language and learning through a mixture of self-study content and live sessions.

### November start (Enhanced Induction)

If you want to settle into your new environment and become familiar with the International College prior to starting your academic pathway programme in January, the Enhanced Induction starts in November and consists of three additional weeks of life, learning and language skills, at no additional tuition fee.





### A transformative learning space

Our College is in the city centre, within walking distance of other University buildings and accommodation. College facilities include:

- **Over 40 classrooms** designed to support different classroom activities
- **Social study zones** for collaborative group work
- **A laboratory** for science and engineering students.

### Small class sizes with experienced tutors

You will study in small classes with teachers experienced in helping students learn in a second language. With a combination of lectures, tutorials, workshops, seminars, interactive learning and independent study, you will experience a wide range of learning methods similar to those at the University.

Teachers will monitor your progress and support you to develop an appropriate pace of study and apply your skills. We will encourage you to build your competence in using academic English on a daily basis and work collaboratively with staff and your fellow students.

### The perfect introduction to studying abroad

You may find that there is a difference between how you studied at home and how students study in the UK. You'll also need to be able to study your chosen subject in English. You may need time to get used to new ways of learning with a focus on independent study. And, you'll have to do all of this while getting used to being in a different country. This is why we are here to help you get used to your new surroundings.

### Dedicated student support

We have over **200 members of staff** dedicated to supporting your success while you're studying here at the College.

Our **highly qualified academic staff** are experts in teaching students from across the world. You will have an academic tutor who will advise you on your strengths and areas for development throughout your programme.

Our **Student Support team** can also help you from the moment you arrive. They can arrange transport from the airport, organise induction activities and trips throughout the semester – and are also available to talk if you have any problems.

The **Progression Support team** can also help if you do not achieve the required progression level for the University of Sheffield at the end of your programme. This team works to ensure that all students who pass our programmes have an alternative choice either at the University of Sheffield, or in another UK university.

**87% of students who completed their preparation programme at the International College were offered a place to study at the University of Sheffield in 2023.**



From the moment you confirm your place, you will be part of the **Big Sheffield Welcome**. We provide free airport transfer service\* on selected dates from Manchester Airport to Sheffield. Further arrival events, tours and activities will be available to help you get settled in, as well as orientation to make sure you complete all the steps of enrolment. This support will continue throughout your time at the International College, as you work towards progressing to the University of Sheffield.

\*The free coach transfer service depends on the intake, and may be subject to change. Students will receive information nearer the course start date.



**AnaMaria from Romania / Academic Tutor**

**“Coming to a new country to study is such an exciting adventure for students, they are so full of energy and curiosity, it is a privilege to witness such enthusiasm. Nevertheless, sometimes there are challenges in moving to a new country and as a former international student myself, I find it very rewarding to help others navigate similar difficulties that I’ve experienced. An important aspect of my job as their teacher is to help create a sense of belonging, a bit like a home away from home, an inclusive environment where they can thrive and become the best version of themselves.”**

# I'm going to be... part of a vibrant campus community



## Your campus

As an International College student, you'll have access to the University of Sheffield's top class facilities, including the best Students' Union in the UK (*Whatuni Student Choice Awards 2017 - 2024*). The University campus has everything you need to study, relax, and socialise:

- **Western Bank Library** – check out new media, digital works, texts, research materials and more
- **The Information Commons** – an innovative, multi-purpose learning environment, open 24 hours a day
- **The Diamond Building** – home to exceptional engineering facilities, and study areas for all students
- **The Arts Tower** – the tallest academic building in the UK, and the city's second tallest building which makes for an exciting place to learn
- **iForge, the UK's first student-led makerspace** – benefit from access to facilities including laser cutters, 3D printers and woodworking tools to allow you to make whatever you want.

You can find the International College on the University of Sheffield campus – right in the heart of the city, where everything you need is within walking distance.





More than 30,000 students from over 150 countries come to the University of Sheffield every year.



Born in Malaysia. / Made in Sheffield.

“Being a Sheffield student, it’s endless opportunities and facilities for you. Our Students’ Union (SU) is really great. There’s a lot of cafés and study areas around the SU and the libraries are also really nice. I like Western Bank and The Diamond, particularly. I’m in the Law society and the Malaysian and Singaporean society.”

Eesha

Studied International Foundation Year.

Progressed to LLB Law.

**What else is on campus?**

Alongside the bars, cafés and restaurants in the Students’ Union, there’s plenty of other things to see and do on campus:

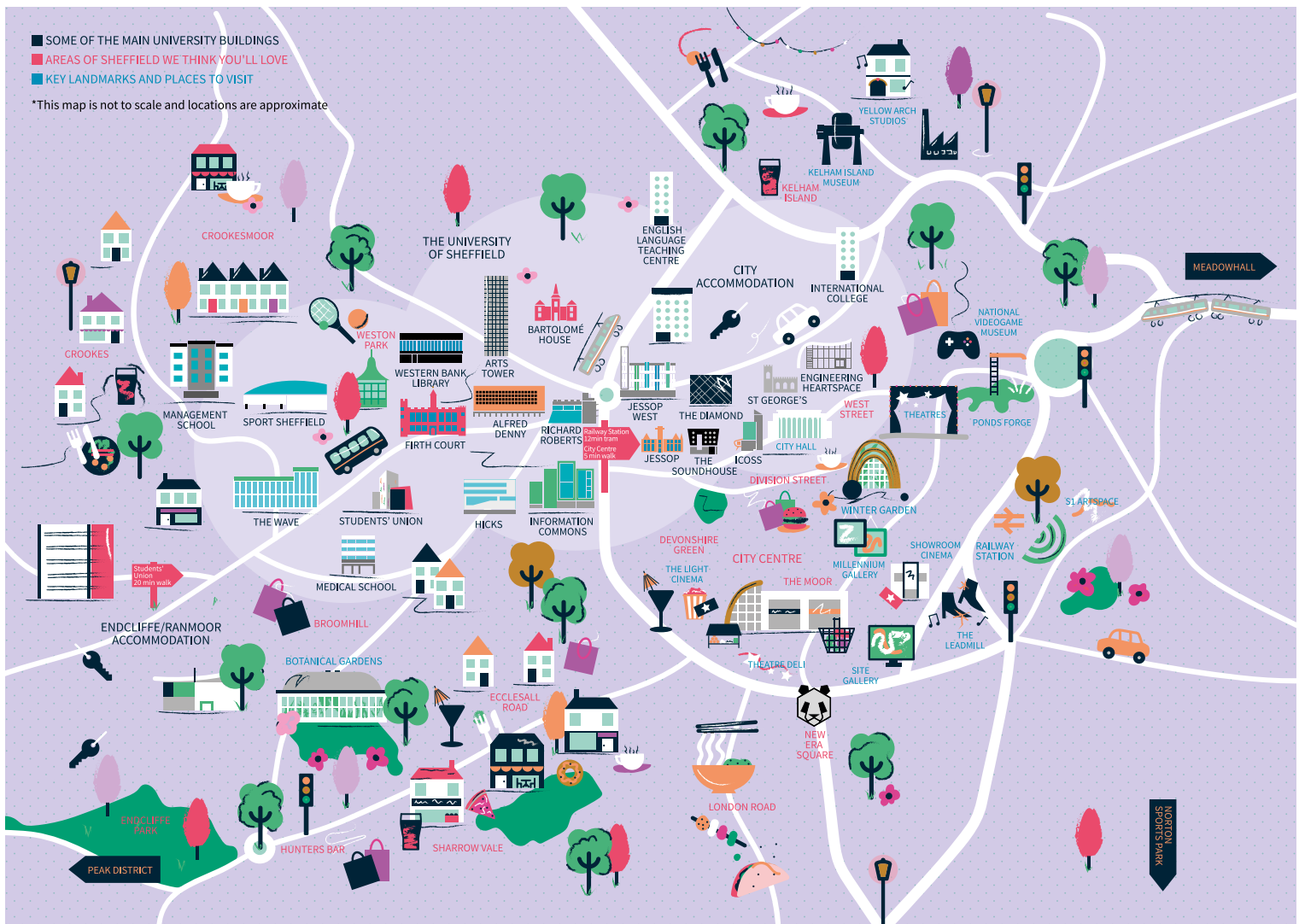
- Over 350 clubs and societies – with the option for students to create their own based around their passions and interests
- Box office for tickets to concerts and performances
- Student council
- Musical and theatrical events
- A bookshop
- Support services
- State-of-the-art fitness centre, with a gym and fitness classes.

**Student sport in the city of Sheffield**

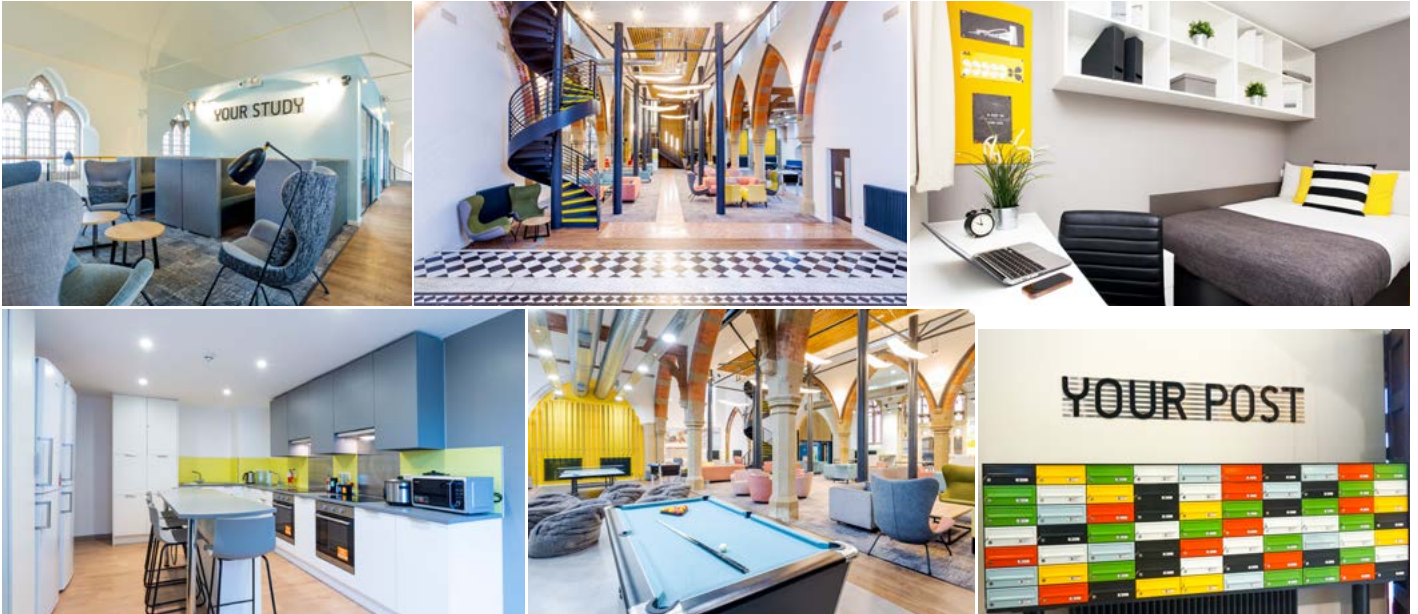
Sheffield Varsity is a showcase and celebration of student sport in the city of Sheffield, with a head-to-head battle between the sports teams of the University of Sheffield and Sheffield Hallam University, including football, athletics and finishing with the annual ice hockey final at the Sheffield Arena.



Take a virtual tour of the University of Sheffield campus: [bit.ly/sheffield\\_campus\\_tour](http://bit.ly/sheffield_campus_tour)



# I'm going to be... at home in Sheffield



## When you're not busy studying or socialising, you'll need somewhere to call home.

Living in student accommodation is a great way to make lifelong friends. It's a key part of the student experience, and a big step in finding your independence. You can choose from University-managed accommodation, [under 5-minute walk from the International College](#), or arrange your own private accommodation.

### St Vincent's Place

Located near the University's main campus, and next to the International College, St Vincent's Place is our University-managed accommodation, incorporating a beautifully renovated church. With plenty of space to socialise and relax, as well as a Residence Life Mentor to help you settle into life in the UK, St Vincent's Place is the ideal spot to call home.

### Facilities at St Vincent's Place

Your room at St Vincent's Place will be a single-occupancy room with a private en-suite bathroom in a shared flat. You can expect the following in your room:

- Fully furnished (including a bed, mattress, under bed storage, wardrobe, mirror, wall shelves and curtains)\*
- Private en-suite bathroom (with shower, mirror, toilet, sink and towel rail)
- Study space (computer desk and chair)
- Bills included (electricity, gas, water and Wi-Fi)

\* Beddings (i.e. covers, sheets and pillowcases) are not included in the accommodation. Students are expected to purchase their own items.

St Vincent's Place also has a number of shared facilities and services, all designed for your comfort and safety:

- Shared kitchen for eight students (including microwave, oven, fridge/freezer, cooking hobs, breakfast bar, stools, sofa, iron, ironing board, noticeboard, kitchen bin, vacuum cleaner, dustpan and brush, mop and bucket)^
- Communal study areas
- 24/7 on-site security
- Social spaces, including a games room and cinema room
- Bike storage
- High speed Wi-Fi
- Laundry facilities (additional charge for each use)
- Music room.

^ Utensils are not included in the kitchen. Students are expected to purchase their own items.

### Information for under 18s

We strongly recommend that all under 18s live in University-managed accommodation. If you are younger than 18 years old when you start your programme, you are guaranteed a room in University-managed accommodation. You'll be placed with students of a similar age group and benefit from specific services available to support younger residents, as well as quick and easy access to the College team.

### Alternative accommodation

We highly recommend the University-managed accommodation to all of our students. However, students studying at the International College do also have the option to arrange their own private accommodation. If you choose to do this, it is important that you let us know where you are staying and this must be less than 60 minutes door-to-door from the College. We also advise that you arrange your accommodation as soon as you confirm your place.

**Note:** Accommodation options vary depending on the time of year you start your course. For the latest information, please visit our website.



See our accommodation facilities at St Vincent's through a 360° virtual tour:  
[usic.sheffield.ac.uk/about/accommodation](https://usic.sheffield.ac.uk/about/accommodation)



Born in Hong Kong. / Made in Sheffield.

“I dreamed to become a pilot and fly a plane since I was young. So getting a pilot license really makes my dreams come true.

My favourite memory from the University of Sheffield is my pilot training during my final year. I still remember when I first flew a plane, the feelings was really amazing. It's really different to being a passenger in the plane, because I could actually touch the controls and get the planes flying.”

**Harald**

*Studied* International Foundation Year.  
*Graduated* with BEng (Hons) Aerospace Engineering.

Secured a job as an Assistant Satellite Operation Engineer.



Find out more about Harald's story:  
[bit.ly/Harald\\_story](https://bit.ly/Harald_story)

# Undergraduate pathway

## International Foundation Year

The International Foundation Year is an intensive programme, designed specifically to provide you with a route to undergraduate degree study at the University of Sheffield.

This course includes academic subjects, study skills and English language preparation. It has been developed for international students and will provide you with the skills and knowledge to succeed in your undergraduate degree. Once you successfully complete your International Foundation Year and achieve the required progression grades, you can enter the first year of your chosen undergraduate degree at the University.

### Study structure

You can choose one of two routes:

#### Business, Social Sciences and Humanities

This will prepare you for an undergraduate degree in business, arts, humanities or social sciences, including those taught at the Management School and the School of Law, and many degrees in other academic schools.

#### Science and Engineering

This will prepare you for an undergraduate degree in the Faculty of Engineering or the Faculty of Science and a small number of degrees in other faculties. For each of our programmes, there are subject-specific pathways based on your progression degree.

### Progression degrees

The International Foundation Year leads to a wide range of undergraduate degrees, subject to meeting progression requirements. These degrees are subject to availability and may change at the University's discretion.

Please refer to the progression degrees listed on page 16 and 17 (note that some progression degrees are not available from the 1.5 semester programme). For the latest list and up-to-date entry requirements, please visit our website.



For more information: [usic.sheffield.ac.uk/programmes/international-foundation-year](https://usic.sheffield.ac.uk/programmes/international-foundation-year)

### Study plan options

Academic IELTS for UKVI	Course length	Start	September-December	January-March	March-June	July-August	September
5.0 (5.0 in writing, 4.0 in other skills)	2 semesters	September or January	IFY			Holiday/re-sits*	Start your undergraduate degree programme at the University of Sheffield
5.0 (5.0 in writing, 4.0 in other skills)	3 weeks EI + 2 semesters	November	EI	IFY			
6.0 (5.0 in all skills)	1.5 semesters	March			IFY		

EI – Enhanced Induction IFY – International Foundation Year

\*Re-sits for the September starters take place end of May. Re-sits for the January and March starters take place end of August.

**Note:** Students wishing to progress to some degree programmes at the University will require an English level of IELTS 0.5 or equivalent higher than the standard level of entry to their International Foundation Year. Please see the website for more information.

### International Foundation Year: key facts

#### Course length

1.5 or 2 semesters

#### Entry points

1.5 semesters: March<sup>A</sup>

2 semesters: September, November (Enhanced Induction) or January

#### Age

Students should be at least 17 years of age on entry to the International College.\*

#### Entry requirements

**Academic:** Good high school graduation grades or equivalent.

For more information on country-specific requirements, please see the website.

**English language:** See the study plan below.

\* For some degrees, students must be aged 18 or over upon progression to the University. Please see page 16 and 17 for more information.

<sup>A</sup> Please note that the Biological, Medical and Life Sciences subject route is not available for the March intake.

### English Language Preparation

If you need further language training before you start the International Foundation Year, you can join our intensive English Language Preparation programme. This course is taught in partnership with the University's English Language Teaching Centre and is designed to improve your English language skills to the necessary level. At the end of your English language preparation programme, you will start the International Foundation Year, providing you have achieved the required language level.

### English Language Preparation: key facts

Our English Language Preparation programmes are delivered either on campus or online depending on the intake date and your English language level:

#### Course length and entry points

**On campus (leading to 2 semesters International Foundation Year):**

1 term: June or September

2 terms: March or June

**Online (leading to 1.5 semesters International Foundation Year):**

7 weeks: January



# International Foundation Year Business, Social Sciences and Humanities

This programme provides a route to a number of degrees in business, the humanities, and social sciences, which include degrees taught at the Management School, the School of Law, and the School of Architecture and Landscape.

Your International Foundation Year will include a combination of academic subjects, study skills and English language preparation. The programme will be tailored to allow you to prepare for your chosen degree, studying the most relevant modules for your subject area.

## Core modules

- Academic English Skills
- Academic Success
- Project Skills

## Pathway modules (related to your degree choice)

There is a choice of four pathways, each with modules specific to that pathway:

### Architecture, Landscape and the Urban Environment (A)

- Social Science
- The Built Environment

### Business, Management and Finance (BM&F)

- Accounting and Financial Management
- Management

### Economics (E)

- Mathematics
- Principles of Economics

### Social Science and Humanities (SS&H)

- Humanities
- Social Science

## University-style teaching

The University of Sheffield International College introduces you to the style of teaching that you will experience on your degree. Taking part in tutorials, seminar-style classes and larger group lectures means that you will be well prepared for an undergraduate degree at the University.

## Assessment

You will be assessed regularly throughout the course. Your development is monitored through coursework during the semesters and assessments at the end of each semester. Some of these assessments might take the form of examinations. You may also need to complete a series of presentations and extended essays as part of your overall assessment.



**1st in the world for  
Library & Information  
Management**

(QS World University Rankings by Subject 2024)



**8th in the UK for Music**

(The Times and The Sunday Times Good University Guide 2025)



**Top 100 in the world  
for Geography**

(QS World University Rankings by Subject 2024)



**Top 100 in the world for  
Philosophy**

(QS World University Rankings by Subject 2024)



**Sheffield University  
Management School  
is triple accredited:  
AACSB, AMBA & EQUIS**

# International Foundation Year Science and Engineering

A pathway to an exciting scientific degree in the Faculty of Engineering or Faculty of Science, as well as a small number of degrees in other faculties.

Your programme will be tailored to prepare you for your chosen degree, studying the most relevant modules to your subject area. Some of the modules listed will be compulsory for progression on to specific degree programmes at the University.

## Core modules

- Academic English Skills
- Academic Success
- Project Skills

## Pathway modules (related to your degree choice)

There is a choice of three pathways, with modules tailored to your aims:

### Biological, Medical and Life Sciences (B&LS) <sup>A</sup>

- Biology
- Chemistry

### Chemistry and Engineering (C&E)

- Chemistry
- Mathematics

### Physics and Engineering (P&E)

- Mathematics
- Physics

<sup>A</sup> Please note that the Biological, Medical and Life Sciences subject route is not available for the March intake.

## University-style teaching

The University of Sheffield International College introduces you to the style of teaching that you will experience on your degree. Taking part in tutorials, seminars, lectures and laboratory work means that you'll be well prepared for an undergraduate degree at the University. Occasionally, our teaching takes place in the University's Diamond Building, so you might get the chance to use the specialist laboratories and facilities.

## Assessment

You will be assessed regularly throughout the course. Your development is monitored through coursework during the semesters and assessments at the end of each semester. Some of these assessments might take the form of examinations. You may also need to complete a series of presentations and extended essays as part of your overall assessment.



See the Diamond, one of the University's engineering facilities, through a 360° virtual tour: [usic.sheffield.ac.uk/diamond-VR](http://usic.sheffield.ac.uk/diamond-VR)



Siemens has collaborated with the University's Careers Service, allowing students access to **Siemens Connected Curriculum** and the brand new **Digital Innovation Zone**.



**4th in the UK for Bioengineering and Biomedical Engineering**

(The Times and The Sunday Times Good University Guide 2025)



**4th in the UK for Materials Technology**

(The Times and The Sunday Times Good University Guide 2025)



**5th in the UK for General Engineering**

(The Times and The Sunday Times Good University Guide 2025)



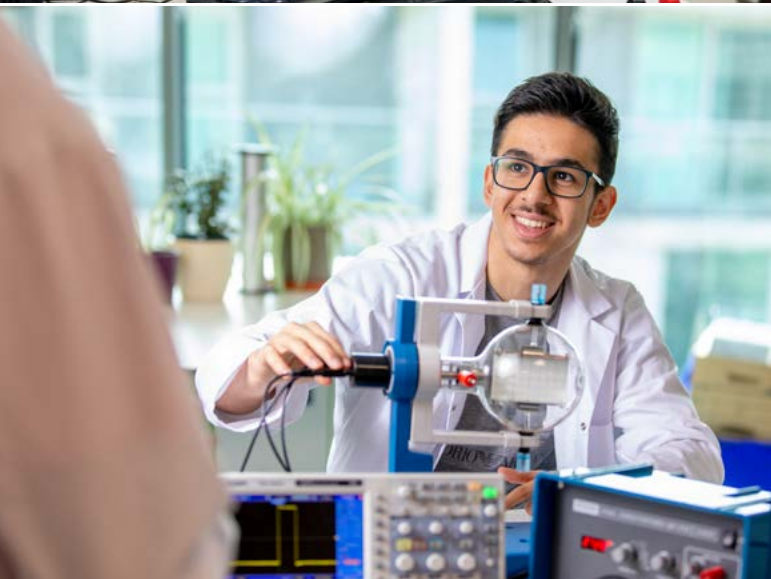
**13th in the UK for Biological Sciences**

(The Times and The Sunday Times Good University Guide 2025)



In the past three years, over **750 engineering students** have completed an **Industrial Placement Year**.





Born in Colombia. / Made in Sheffield.

“In College, the labs were strict in the sense that you had to write everything down... Coming to work, because of all the legal regulations like good manufacturing practice, all the laws that you need to follow, you also need to write everything down, be really neat. Like you need to make sure that whoever reads your process during the test, they need to be able to repeat it. And having the experience from College really helped. I still get the comments of “Your notes are really easy to read.”

**Jose**

*Studied International Foundation Year.*

*Graduated with MEng (Hons) Biomedical Engineering.*

*Secured a job as a Development Engineer at Smith+Nephew, UK.*



# Undergraduate progression degrees

Choose from **over 145 undergraduate degrees** available from the International Foundation Year, subject to meeting progression requirements. Please note some progression degrees are not available from the 1.5 semester programme. Places are limited on some courses, so you are advised to apply and confirm your place as soon as possible. These degrees are subject to availability and may change at the University's discretion. **Please refer to the website for full and up-to-date details.**

## International Foundation Year Business, Social Sciences and Humanities

Degree Programmes	Pathway
Accounting and Financial Management BA (Hons)	BM&F
Accounting and Financial Management and Economics BA (Hons)	BM&F
Applied Social Sciences BA (Hons)	SS&H
Architecture BA (Hons) *	A
Architecture and Landscape BA (Hons) *	A
Business Management BA (Hons)	BM&F
Business Management and Economics BA (Hons)	BM&F
Business Management and Japanese Studies BA (Hons) ☐	BM&F
Chinese Studies BA (Hons) ☐	SS&H
Chinese Studies and Business Management BA (Hons) ☐	SS&H
Chinese Studies and History BA (Hons) ☐	SS&H
Chinese Studies with Japanese BA (Hons) ☐	SS&H
Criminology BA (Hons)	SS&H
Data Science BSc (Hons)	BM&F / E / SS&H
Digital Media and Society BA (Hons)	SS&H
East Asian Studies BA (Hons)	SS&H
Economics BA (Hons)	E
Economics BSc (Hons)	E
Economics and Mathematics BSc (Hons)	E
Economics and Politics BA (Hons)	E
Economics with Finance BSc (Hons)	E
Education, Culture and Childhood BA (Hons)	SS&H
English and History BA (Hons)	SS&H
English and Music BA (Hons)	SS&H
English Language and Linguistics BA (Hons)	SS&H
English Language and Literature BA (Hons)	SS&H
English Literature BA (Hons)	SS&H
Financial Mathematics BSc (Hons)	E
Geography BA (Hons)	A
Geography and Planning BA (Hons)	A
Global Sustainable Development BA (Hons)	A
History BA (Hons)	SS&H
History and Music BA (Hons)	SS&H
International Business Management with Study Abroad BA (Hons) ^	BM&F
International Relations and Politics BA (Hons)	SS&H
Japanese Studies BA (Hons) ☐	SS&H
Japanese Studies and History BA (Hons) ☐	SS&H
Journalism Studies BA (Hons) **† Δ	SS&H
Korean Studies BA (Hons) ☐	SS&H
Korean Studies with Japanese BA (Hons) ☐	SS&H
Landscape Architecture BA (Hons) ‡	A
Landscape Architecture BSc (Hons) ‡	A
Landscape Architecture MLA #	A
Law LLB (Hons)	SS&H
Law (European and International) LLB (Hons)	SS&H
Law and Criminology LLB (Hons)	SS&H

Degree Programmes	Pathway
Mathematics BSc (Hons)	E
Mathematics MMath (Hons)	E
Mathematics and Philosophy BSc (Hons)	E
Mathematics and Statistics MMath (Hons)	E
Modern Languages and Cultures BA (Hons)	SS&H
Music BMus (Hons) !	SS&H
Music and Korean Studies BA (Hons) !☐	SS&H
Music and Modern Languages and Cultures BA (Hons) !	SS&H
Music and Philosophy BA (Hons) !	SS&H
Philosophy BA (Hons)	SS&H
Philosophy and Modern Languages and Cultures BA (Hons)	SS&H
Philosophy, Religion and Ethics BA (Hons)	SS&H
Politics and Philosophy BA (Hons)	SS&H
Politics and Sociology BA (Hons)	SS&H
Psychology BSc (Hons)	BM&F / E / SS&H
Psychology with Placement Year BSc (Hons)	BM&F / E / SS&H
Sociology BA (Hons)	SS&H
Sociology with Social Policy BA (Hons)	SS&H
Urban Studies BA (Hons)	A
Urban Studies and Planning MPlan (Hons)	A

### Pathway key:

- (A) Architecture, Landscape and the Urban Environment
- (BM&F) Business, Management and Finance
- (E) Economics
- (SS&H) Social Science and Humanities

\* Design portfolio required at application to the International College.

^ Language degrees not suitable for native speakers.

☐ Students must be 18 or over when starting their degree.

\*\* Students wishing to progress to these degree programmes at the University will require an English level of IELTS 0.5 or equivalent higher than the standard level of entry to their International Foundation Year.

† Pass in a blog and interview is required as well as meeting the progression requirements.

‡ Portfolio will be completed at the International College and students need to pass as well as meeting the academic progression requirements.

! Grade 8 Practical (ABRSM/Trinity/Rockschool) at Merit + Grade 5 theory (ABRSM/Trinity) at Merit or equivalent. Students without the required Music qualifications need to submit their portfolio (1-2 pieces of recorded performance video or compositions), which will be assessed by the School before students can be admitted to the International College.

Δ Blog chat required.

# This is a five-year integrated masters course, which includes one year working in a professional landscape practice. Students need to create a portfolio during their pathway programme and present it with a personal statement to the department for approval before progression.



## International Foundation Year Science and Engineering

Degree Programmes	Pathway	Degree Programmes	Pathway
Aerospace Engineering BEng (Hons)	P&E	Environmental Science BSc (Hons) <sup>Δ</sup>	ALL
Aerospace Engineering MEng (Hons)	P&E	Environmental Science MEnvSci <sup>Δ</sup>	ALL
Aerospace Engineering with Private Pilot Instruction BEng (Hons)	P&E	Financial Mathematics BSc (Hons)	P&E
Aerospace Engineering with Private Pilot Instruction MEng (Hons)	P&E	General Engineering BEng (Hons)	P&E
Architectural Engineering MEng (Hons)	P&E	General Engineering MEng (Hons)	P&E
Architectural Engineering with an Industrial Placement Year MEng	P&E	General Engineering with an Industrial Placement Year BEng (Hons)	P&E
Biochemistry BSc (Hons) !	B&LS	General Engineering with an Industrial Placement Year MEng (Hons)	P&E
Biochemistry with an Industrial Placement Year BSc (Hons) !	B&LS	Geography BSc (Hons) <sup>Δ</sup>	ALL
Biological Sciences BSc (Hons) !	B&LS	Materials Science and Engineering BEng (Hons)	C&E
Biological Sciences MBiolSci (Hons) !	B&LS	Materials Science and Engineering MEng (Hons)	C&E
Biomedical Engineering BEng (Hons)	P&E / C&E	Mathematics BSc (Hons)	P&E
Biomedical Engineering MEng (Hons)	P&E / C&E	Mathematics MMath (Hons)	P&E
Biomedical Engineering with an Industrial Placement Year BEng (Hons)	P&E / C&E	Mathematics and Philosophy BSc (Hons)	P&E
Biomedical Engineering with an Industrial Placement Year MEng (Hons)	P&E / C&E	Mathematics and Statistics BSc (Hons)	P&E
Biomedical Science BSc (Hons) !	B&LS	Mathematics and Statistics MMath (Hons)	P&E
Biomedical Science MBiolSci (Hons) <sup>Δ</sup> !	B&LS	Mechanical Engineering BEng (Hons)	P&E
Biomedical Science with an Industrial Placement Year BSc (Hons) !	B&LS	Mechanical Engineering MEng (Hons)	P&E
Biomedical Science with an Industrial Placement Year MBiomedSci (Hons) !	B&LS	Mechatronic and Robotic Engineering BEng (Hons)	P&E
Chemical Engineering BEng (Hons)	C&E	Mechatronic and Robotic Engineering MEng (Hons)	P&E
Chemical Engineering MEng (Hons)	C&E	Mechatronic and Robotic Engineering with an Industrial Placement Year BEng (Hons)	P&E
Chemical Engineering with an Industrial Placement Year MEng (Hons)	C&E	Mechatronic and Robotic Engineering with an Industrial Placement Year MEng (Hons)	P&E
Chemical Engineering with an Industrial Placement Year BEng (Hons)	C&E	Orthoptics BMedSci (Hons) <sup>Δ</sup> † !	P&E / C&E
Chemistry BSc (Hons)	C&E	Pharmacy MPharm ‡	B&LS / C&E
Chemistry MChem (Hons)	C&E	Physics BSc (Hons)	P&E
Chemistry with an Industrial Placement Year BSc (Hons)	C&E	Physics MPhys (Hons)	P&E
Chemistry with an Industrial Placement Year MChem (Hons)	C&E	Physics and Astrophysics BSc (Hons)	P&E
Chemistry with Biological and Medicinal Chemistry BSc (Hons) !	C&E	Physics and Astrophysics MPhys (Hons)	P&E
Chemistry with Biological and Medicinal Chemistry MChem (Hons)	C&E	Physics with Particle Physics BSc (Hons)	P&E
Civil and Structural Engineering MEng (Hons)	P&E	Physics with Particle Physics MPhys	P&E
Civil and Structural Engineering with an Industrial Placement Year MEng	P&E	Psychology BSc (Hons) !	B&LS
Civil Engineering BEng (Hons)	P&E	Psychology with Placement Year BSc (Hons)	B&LS
Civil Engineering MEng (Hons)	P&E	Structural Engineering and Architecture MEng (Hons) *	P&E
Civil Engineering with an Industrial Placement Year BEng	P&E	Structural Engineering and Architecture with an Industrial Placement Year MEng (Hons) *	P&E
Civil Engineering with an Industrial Placement Year MEng	P&E	Theoretical Physics BSc (Hons)	P&E
Computer Science BSc (Hons)	P&E	Theoretical Physics MPhys (Hons)	P&E
Computer Science MComp	P&E	Zoology BSc (Hons) !	B&LS
Computer Science (Artificial Intelligence) BSc (Hons)	P&E	Zoology MBiolSci (Hons) !	B&LS
Computer Science (Artificial Intelligence) MComp	P&E		
Computer Science (Artificial Intelligence) with an Industrial Placement Year BSc (Hons)	P&E	<b>Pathway key:</b>	
Computer Science (Software Engineering) BEng (Hons)	P&E	(B&LS) Biological, Medical and Life Sciences	
Computer Science (Software Engineering) MEng (Hons)	P&E	(C&E) Chemistry and Engineering	
Computer Systems Engineering BEng (Hons)	P&E	(P&E) Physics and Engineering	
Computer Systems Engineering MEng (Hons)	P&E		
Computer Systems Engineering with an Industrial Placement Year BEng (Hons)	P&E	* Design portfolio required at application to the International College.	
Computer Systems Engineering with an Industrial Placement Year MEng (Hons)	P&E	<sup>Δ</sup> Students must be 18 or over when starting their degree.	
Data Science BSc (Hons)	ALL	! Not available for March starters.	
Electrical and Electronic Engineering BEng (Hons)	P&E	† Students must attend at least two events organised by the Academic Unit of Ophthalmology and Orthoptics.	
Electrical and Electronic Engineering MEng (Hons)	P&E	<sup>Δ</sup> This progression degree is only available for March starters via the C&E or P&E pathway routes.	
Electronics and Computer Engineering BEng (Hons)	P&E	‡ The International College can accept ten students onto the International Foundation Year for its September intake only. The admission process for the pathway will also include an aptitude assessment. In order to progress to the four-year Pharmacy course, as well as meeting module grades, students will also need to undergo an interview, a Disclosure and Barring Service check and an Occupational Health check.	
Electronics and Computer Engineering MEng (Hons)	P&E		

# Postgraduate pathway

## Pre-Masters

The Pre-Masters programme at the University of Sheffield International College offers a path to postgraduate study for international students.

This course is an intensive 1.5 or 2 semester programme of academic subjects, study skills and English language preparation. It has been designed specifically to prepare you for masters study at the University of Sheffield. This programme is for you if you do not meet the direct entry requirements for a masters degree, want to refresh your skills, or want to be better prepared for the style of study required during a UK masters degree. Once you successfully complete your Pre-Masters programme and achieve the required progression grades, you can proceed to your postgraduate degree at the University.

### Study structure

You can choose one of two routes:

#### Business, Social Sciences and Humanities

This will prepare you for a taught postgraduate degree in the Faculty of Social Sciences, including the School of Law, the Management School, and the School of Architecture and Landscape. It can also lead to degrees in the Faculty of Arts and Humanities and other areas too.

#### Science and Engineering

This will prepare you for a taught postgraduate degree in the Faculty of Engineering or Faculty of Science, and a small number of programmes in other faculties, such as Health. For each of our programmes, there are subject-specific pathways based on your progression degree.

### Progression degrees

The Pre-Masters leads to a wide range of postgraduate degrees, subject to meeting progression requirements. These degrees are subject to availability and may change at the University's discretion. Please refer to the progression degrees listed on page 22 and 23. For the latest list and up-to-date entry requirements, please visit our website.



For more information:  
[usic.sheffield.ac.uk/programmes/pre-masters](http://usic.sheffield.ac.uk/programmes/pre-masters)

### Study plan options

Academic IELTS for UKVI <sup>A</sup>	Course length	Start	September-December	January-March	March-June	July-August	September
5.5 (5.5 in all skills)	2 semesters	September or January	PMP			Holiday/re-sits*	Start your postgraduate degree programme at the University of Sheffield
5.5 (5.5 in all skills)	3 weeks EI + 2 semesters	November	EI	PMP			
6.0 (5.5 in all skills)	1.5 semesters	March			PMP		

**EI** – Enhanced Induction    **PMP** – Pre-Masters programme

\*Re-sits for the September starters take place end of May. Re-sits for the January and March starters take place end of August.

<sup>A</sup>Alternative equivalent assessment are accepted provided you meet all the programme entry requirements.

**Note:** Students wishing to progress to some degree programmes at the University will require an English level of IELTS 0.5 or equivalent higher than the standard level of entry to their Pre-Masters programme. See the website for more information.

### Pre-Masters: key facts

#### Course length

1.5 or 2 semesters

#### Entry points

1.5 semesters: March <sup>A</sup>

2 semesters: September, November (Enhanced Induction) or January

#### Age

Students will normally be 19 years of age or older.

#### Entry requirements

**Academic:** Recognised degree – in a related field for most subjects.

For more information on country-specific requirements, please see the website.

**English language:** See the study plan below.

<sup>A</sup> Please note that the Biological, Medical and Life Sciences subject route is not available for the March intake.

### English for Pre-Masters

If you need additional language training before you start your Pre-Masters, depending on your degree choice, you may be able to join our intensive English for Pre-Masters programme. This is taught in partnership with the University's English Language Teaching Centre and is designed to improve your English language skills to the necessary level. At the end of your English language preparation programme, you will start the Pre-Masters programme, providing you have achieved the required language level.

### English for Pre-Masters: key facts

Our English for Pre-Masters programme is delivered either on campus or online depending on the intake date and your English language level:

#### Course length and entry points

##### On campus (leading to 2 semesters Pre-Masters):

1 term: June or September

2 terms: March or June

##### Online (leading to 2 semesters Pre-Masters):

10 weeks: June or September

##### Online (leading to 1.5 semesters Pre-Masters):

7 weeks: January

# Pre-Masters

## Business, Social Sciences and Humanities

This course provides a route to a number of masters degrees in the Faculties of Arts and Humanities and Social Sciences, including the Management School, the School of Law, and School of Architecture and Landscape.

Your programme will be tailored to prepare you for your chosen degree, studying the most relevant modules to your subject area. Some of the modules listed will be compulsory for progression on to specific degree programmes at the University. To join a Pre-Masters pathway, you may need a relevant first degree.

### Core modules

- Academic English Skills
- Academic Success
- Research Project

### Pathway modules (related to your degree choice)

There is a choice of five pathways, with modules tailored to your aims:

#### **Business, Management and Finance (BM&F)**

- Accounting and Finance
- Management

#### **Economics (E)**

- Advanced Economics
- Statistics and Econometrics

#### **Information Studies (IS)**

- Social Science
- Statistics and Econometrics

#### **Law and Criminology (L&C)**

- Advanced Law
- Social Science

#### **Social Sciences & Humanities (SS&H)**

- Communication, Cultures and Heritage
- Social Science

### University-style teaching

The University of Sheffield International College introduces you to the style of teaching that you will experience on your degree. Taking part in tutorials, seminar-style classes and larger group lectures will prepare you for your masters at the University.

### Assessment

You will be assessed regularly throughout the course. Your development is monitored through coursework during the semesters and assessments at the end of each semester. Some of these assessments might take the form of examinations. You may also need to complete a series of presentations and extended essays as part of your overall assessment.



Sheffield University Management School has been awarded a **Silver Charter Award** from the Small Business Charter, recognising the University's active participation in supporting start-ups and small and medium sized businesses.



Born in China.

Made in Sheffield.

“I have a plan to apply for a PhD degree in the UK and my friend told me that if I study in the International College before my masters, I can have the experience of learning academic English skills, like how to write in a formal format and it will help me to have a high mark in the masters degree. So then it will be more helpful for me to apply for a higher degree in the UK.

The style of teaching is very helpful. It's very different from the way our Chinese teachers are teaching... In summary, in China the teacher puts the knowledge into our brain, but here the teacher helps us to acquire the knowledge by ourselves.”

Yingjie (Alex)

*Studied Pre-Masters programme.*

*Progressed to MSc Finance and Accounting.*



Find out more about Yingjie's story:  
[bit.ly/Yingjie\\_story](https://bit.ly/Yingjie_story)

# Pre-Masters Science and Engineering

This course provides a route to a number of masters degrees in the Faculty of Engineering and Faculty of Science, as well as a small number of degrees in other faculties.

Your Pre-Masters will include a combination of academic subjects, study skills and English language preparation. You will study modules relevant to your chosen subject area. Some of the modules listed will be compulsory for progression on to specific degree programmes at the University. To join a Pre-Masters pathway, you may need a relevant first degree.

## Core modules

- Academic English Skills
- Academic Success
- Research Project for STEM
- Statistics

## Pathway modules (related to your degree choice)

There is a choice of three pathways, with modules tailored to your aims:

### Biological, Medical and Life Sciences (B&LS)<sup>Δ</sup>

- Bioscience

### Computing and Computer Science (C&CS)

- Programming

### Physical Sciences and Engineering (PS&E)

- Mathematics

<sup>Δ</sup> Please note that the Biological, Medical and Life Sciences subject route is not available for the March intake.

## University-style teaching

The University of Sheffield International College introduces you to the style of teaching that you will experience on your degree. Taking part in tutorials, seminars, lectures and laboratory work means that you will be well prepared for a masters degree at the University.

## Assessment

You will be assessed regularly throughout the course. Your development is monitored through coursework during the semesters and assessments at the end of each semester. Some of these assessments might take the form of examinations. You may also need to complete a series of presentations and extended essays as part of your overall assessment.



See the Diamond, one of the University's engineering facilities, through a 360° virtual tour:  
[usic.sheffield.ac.uk/diamond-VR](https://usic.sheffield.ac.uk/diamond-VR)



**98% of research and impact from the School of Biosciences is rated as world-leading or internationally excellent.**

(Research Excellence Framework 2021)



# Postgraduate progression degrees

Choose from **over 115 postgraduate degrees** available from the Pre-Masters programme, subject to meeting progression requirements. Places are limited on some courses, so you are advised to apply and confirm your place as soon as possible. These degrees are subject to availability and may change at the University's discretion.

**Please refer to the website for full and up-to-date details.**

**Note:** Some progression degrees require specific academic background for application/confirmation.

## Pre-Masters Business, Social Sciences and Humanities

Degree Programmes	Pathway
Applied Linguistics MA	SS&H
Archaeology and Heritage MA	ALL
Architectural Design MA <sup>Δ</sup>	SS&H
Broadcast Journalism MA <sup>**^</sup>	SS&H
Business Administration MBA <sup>∅</sup>	BM&F
Business Finance and Economics MSc	E
Cognitive Studies MA	SS&H
Corporate and Commercial Law LLM	L&C
Creative and Cultural Industries Management MSc	BM&F
Cultural Data Management & Communications MA	SS&H
Cultural Heritage Management MA	SS&H
Data Science MSc	IS
Digital Culture & Communications MA	SS&H
Digital Media and Society MA	SS&H
East Asian Business MSc	SS&H
Economics MSc	E
Education MA	SS&H
Education: Early Childhood MA	SS&H
Education: Language and Education MA	SS&H
English Literature MA <sup>†</sup>	SS&H
English Literature (Creative Writing) MA <sup>‡</sup>	SS&H
Environmental Change and International Development MSc	SS&H
Finance MSc	E
Finance and Accounting MSc	BM&F
Financial Economics MSc	E
Geographical Information Systems (GIS) MSc	SS&H
Global Journalism MA	SS&H
History MA	SS&H
Human Resource Management MSc	BM&F
Human Resource Management with CIPD Pathway MSc	BM&F
Information Management MSc	IS
Information Systems MSc	IS
Information Systems Management MSc	IS
International Criminology MA	L&C
International Development MA	SS&H
International Development MPH	SS&H
International Law and Global Justice LLM	L&C
International Management MSc	BM&F
International Management and Marketing MSc	BM&F
International Political Economy MA	SS&H
International Public and Political Communication MA	SS&H
International Relations MA	SS&H
International Relations and East Asia MA	SS&H
Journalism MA <sup>**^</sup>	SS&H
Law MA <sup>*</sup>	L&C
Logistics and Supply Chain Management MSc	BM&F
Management MSc	BM&F
Management (International Business) MSc	BM&F

Degree Programmes	Pathway
Money, Banking and Finance MSc	E
Music Management MA	SS&H
Musicology MA	SS&H
Music Performance Studies MA <sup>!</sup>	SS&H
Music Performance Studies (Piano) MA <sup>!</sup>	SS&H
Philosophy MA	SS&H
Political Theory MA	SS&H
Politics and Media in East Asia MA	SS&H
Politics, Governance and Public Policy MA	SS&H
Psychology and Education MA	SS&H
Psychology of Music MA	SS&H
Real Estate MSc	SS&H
Speech Difficulties MSc	SS&H
Strategic Marketing and Branding MSc	BM&F
Sustainable Architecture Studies MSc <sup>Δ</sup>	SS&H
TESOL MA	SS&H
Translation Studies MA	SS&H
Urban Design MA <sup>Δ</sup>	SS&H
Urban Design and Planning MA	SS&H
Urban and Regional Planning MSc	SS&H

### Pathway key:

(BM&F) Business, Management and Finance  
 (E) Economics  
 (IS) Information Studies  
 (L&C) Law and Criminology  
 (SS&H) Social Sciences & Humanities

\* Two-year programme at the University. The MA is designed for graduates who don't have a law degree.

\*\* Students wishing to progress to these degree programmes at the University will require an English level of IELTS 0.5 or equivalent higher than the standard level of entry to their Pre-Masters programme.

<sup>Δ</sup> Design portfolio on entry to the International College assessed by Study Group (sample portfolios of adequate standard will be provided by the School to the College selection team).

<sup>Δ</sup> Pass in a blog and interview is required.

<sup>!</sup> Portfolio submission - progression must be via a video audition on principal instrument. This is required before progression at the end of the Pre-Masters programme.

<sup>∅</sup> At least three years relevant full-time work experience after graduation with some managerial experience and interview is required.

<sup>‡</sup> A portfolio of prose/drama (2,000 words) or five poems need to be submitted to the Course Director for approval by the end of the Pre-Masters programme.

<sup>†</sup> An indicative piece of the student's academic writing that demonstrates their competence in written English and critical thinking, breadth of reading, ability to subject literary texts to close analysis need to be submitted to the Course Director for approval by the end of the Pre-Masters programme.

## Pre-Masters Science and Engineering

Degree Programmes	Pathway
Advanced Computer Science MSc	C&CS
Advanced Control and Systems Engineering MSc	C&CS
Advanced Mechanical Engineering MSc	PS&E
Advanced Metallurgy MSc	PS&E
Aerospace Engineering MSc	PS&E
Artificial Intelligence MSc	C&CS
Astrophysics MSc	PS&E
Autonomous and Intelligent Systems MSc	PS&E
Biochemical Engineering with Industrial Management MSc	PS&E
Biological and Bioprocess Engineering MSc (Eng)	PS&E
Biomedical Engineering MSc	PS&E
Biomedical Science MSc <sup>Δ</sup>	B&LS
Cancer Biology and Therapeutics MSc <sup>Δ</sup>	B&LS
Chemistry MSc	PS&E
Civil Engineering MSc <sup>Δ</sup>	PS&E
Civil Engineering and Project Management MSc	PS&E
Cognitive and Computational Neuroscience MSc	PS&E
Cognitive and Systems Neuroscience MSc	PS&E
Cognitive Neuroscience and Human Neuroimaging MSc	B&LS
Computer Science with Speech and Natural Language Processing MSc	C&CS
Cybersecurity and Artificial Intelligence MSc	C&CS
Data Communications MSc (Eng)	PS&E
Drug Discovery Science MSc	PS&E
Electronic and Electrical Engineering MSc (Eng)	PS&E
Energy Engineering with Industrial Management MSc	PS&E
Environmental and Energy Engineering MSc (Eng)	PS&E
Human and Molecular Genetics MSc <sup>Δ</sup>	B&LS
Materials Science and Engineering MSc	PS&E
Mechanical Engineering and Industrial Management MSc	PS&E
Molecular Biology and Biotechnology MSc <sup>Δ</sup>	B&LS
Nanomaterials and Materials Science MSc	PS&E
Pharmaceutical Engineering MSc	PS&E
Process Safety and Loss Prevention MSc (Eng)	PS&E
Psychological Research Methods MSc	PS&E
Psychological Research Methods with Advanced Statistics MSc	PS&E
Psychological Research Methods with Data Science MSc	PS&E
Robotics MSc	C&CS
Statistics MSc	PS&E
Statistics with Medical Applications MSc	PS&E
Structural Engineering MSc	PS&E
Wireless Communications Systems MSc (Eng)	PS&E

### Pathway key:

(B&LS) Biological, Medical and Life Sciences

(C&CS) Computing and Computer Science

(PS&E) Physical Sciences and Engineering

<sup>Δ</sup> This degree is accredited as meeting the requirements for Further Learning for a Chartered Engineer (CEng) for candidates who have already acquired a partial CEng accredited undergraduate first degree.

<sup>Δ</sup> Not available for March starters.



Born in Egypt.

Made in Sheffield.

“My best time was during foundation year. I got to know the places, the restaurants, the accommodation I wanted to join. I didn’t want to just go straight to university.

One of the best skills I had from the foundation year was how to work in a group, how to communicate with people that you’re not friends with. You’re getting familiar with deadlines, you’re getting familiar with like assignments and stuff, because we didn’t really have that in school. So it’s the best preparation for university. When I went to university, I expected everything and I was not surprised with what was happening around me.”

**Mohamed**

*Studied International Foundation Year.  
Progressed to BEng (Hons) Aerospace  
Engineering.*



## Student insurance

We strongly recommend that international students have the protection of personal insurance whilst in the UK. You may wish to purchase our “StudyCare Insurance Plus” cover or arrange your own.

StudyCare Insurance Plus is specifically designed for international students’ needs during your studies at the International College and, if required, after progressing to your university.

Our insurance cover is available for up to 12 months or 24 months (fixed), allowing you to choose the policy length that suits you. Both lengths cover travel to the UK, loss of personal possessions as well as providing health and medical insurance. You can purchase StudyCare Insurance Plus as part of the application process. Visit our website for more information [studygroup.com/studycare](http://studygroup.com/studycare).

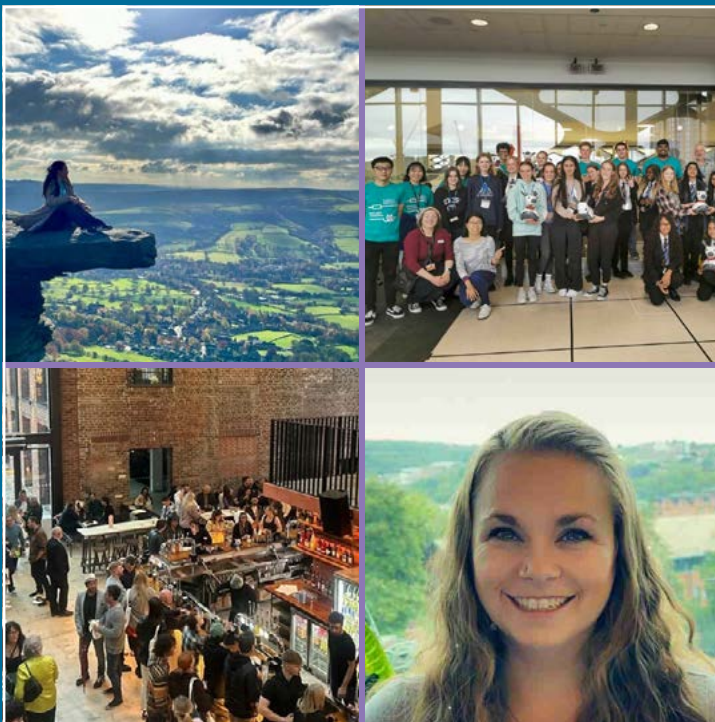
## How to apply

If you would like to apply to study at the University of Sheffield International College, you will need to complete an application form and submit the relevant documentation.

You can apply through your local education agent. Alternatively you can apply directly via our website and one of our dedicated Student Enrolment Advisors will be happy to provide support through every step of the application process.



Full information on how to apply, fees, entry requirements and more, visit [usic.sheffield.ac.uk/how-to-apply](http://usic.sheffield.ac.uk/how-to-apply)



## Ask us your questions

Some of our Staff and Student Ambassadors are available to answer your questions about studying in Sheffield.



Start a chat with one of them today:  
[bit.ly/Ask\\_a\\_friend](https://bit.ly/Ask_a_friend)

## Join us on social media

 /UniversityofSheffieldInternational

 @sheffield\_ic

 /TheUniversityofSheffieldInternationalCollege

#MadelnSheffield

### Scholarships



Scholarships are available for the pathway programme and the degree study at the University of Sheffield. Please visit our website for more information: [usic.sheffield.ac.uk/how-to-apply/scholarships](https://usic.sheffield.ac.uk/how-to-apply/scholarships)

### Online events

We know that there is a lot to consider when researching and choosing where to study. Our online sessions on Zoom and Instagram cover different aspects of studying at the International College, the University life and living in the city of Sheffield.

Each session features a variety of speakers, including our College staff and Student Ambassadors. These sessions will also give you the opportunity to ask any questions you may have about studying in Sheffield.



Join our upcoming virtual events: [usic.sheffield.ac.uk/international-college/virtual-events](https://usic.sheffield.ac.uk/international-college/virtual-events)



#### Disclaimer

This guide is intended as a general guide for students considering entry to the University of Sheffield International College from December 2024. The University of Sheffield International College is operated, and its programmes offered by Study Group Limited ('Study Group'). This guide forms no part of any contract between you and Study Group except as provided below.

The guide is prepared in advance of the academic year to which it relates, and Study Group makes every effort to ensure that the information contained here is accurate. Although reasonable steps are taken by Study Group to provide the programmes and services described, Study Group cannot guarantee the provision of any programme. Any programme may be altered or withdrawn owing to circumstances beyond Study Group's reasonable control.

Such circumstances include (but are not limited to) industrial action, lack of demand, departure of key personnel, change in government policy, withdrawal, or reduction of funding, change of law or changes necessitated by pandemic or epidemic.

Study Group will take such steps as are available to it to minimise the effect of any alteration or withdrawal of a programme and we will notify you of such alteration or withdrawal as soon as possible. Such steps may include the offer of a place on an alternative programme. Alternatively you may withdraw your application without any liability for fees (including the enrolment fee).

Please note that University of Sheffield International College's website is the most up-to-date source of information regarding programmes and facilities, and we strongly recommend that you always visit the website before making any commitments.

The University of Sheffield and its logo are registered Trade Marks of the University of Sheffield. 'Study Group' and the Study Group logo are registered Trade Marks of Study Group. Unless otherwise stated, all material in this publication is copyright of Study Group. No part of this publication may be reproduced, stored in a retrieval system or transmitted in any form, or by any means, electronic, mechanical, photocopying, recording or otherwise, without the permission of Study Group.

For more information, please visit [studygroup.com](https://www.studygroup.com)

