



# INTERNATIONAL STUDY CENTRE

**UK top 10** in 21 subjects

The Times and The Sunday Times  
Good University Guide 2024

Glasgow is **ranked 4th best student city** in the UK

QS Best Student Cities 2024

[isc.strath.ac.uk](http://isc.strath.ac.uk)



**THE PLACE OF USEFUL LEARNING**

# WHY STRATHCLYDE?

## A top 20

UK university

The Guardian University Guide 2024 and,  
The Times and The Sunday Times Good  
University Guide 2024

---

## First university

to win the coveted  
'Times Higher Education  
University of the Year'  
title twice

(2012 & 2019)

---

## £1 billion

investment in the University  
campus to create a  
world-class environment  
for students

(2008-2025 plan)

---

## Recipient

of the Queen's  
Anniversary Prize

(1996, 2019, 2021 & 2023)

---

## Almost 90%

of research is rated  
'world-leading' or  
'internationally-excellent'

Times Higher Education's analysis  
of REF 2021

---

### Scholarships

Joint scholarships available  
for the pathway programme  
and the degree study. Please  
visit our website for more  
information: [isc.strath.ac.uk/  
how-to-apply/scholarships](https://isc.strath.ac.uk/how-to-apply/scholarships)



# THE INTERNATIONAL STUDY CENTRE WELCOMES YOU

Here at the University of Strathclyde International Study Centre, we are dedicated to providing specialist degree preparation for international students.

Our programmes combine academic modules, study skills and English language training. These skills are designed to provide you with the best opportunity to succeed when you progress onto your degree programme at the University of Strathclyde.

The International Study Centre introduces you to the style of teaching that you will experience when you progress on to your degree at Strathclyde. This includes tutorials, seminar-style classes and some large group lectures. You will be assessed regularly throughout the course to help us monitor your progress, and experienced staff are always available to help you with anything you need, both inside and outside of your academic studies.

## Pre-courses

### Prepare for Success

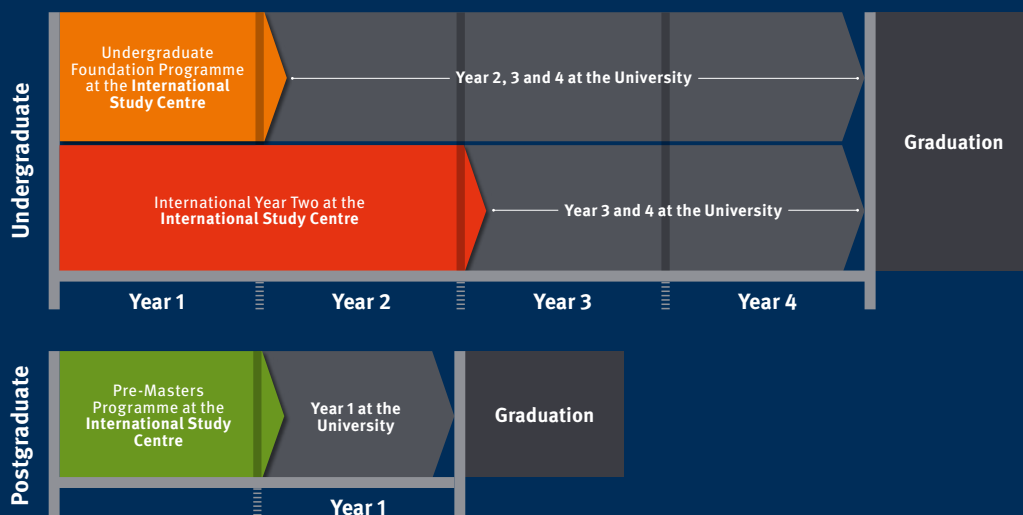
Join our free online preparation course to improve your expectations, skills and readiness ahead of starting your academic pathway programme. The course is designed to provide you with practical advice, guidance and support, so that you are ready to succeed from day one of your academic programme.

### November start (Enhanced Induction)

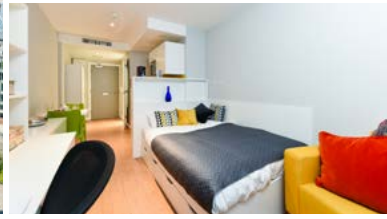
If you want to settle into your new environment and become familiar with the International Study Centre prior to starting your academic pathway programme in January, the Enhanced Induction starts in November and consists of three additional weeks of life, learning and language skills, at no additional tuition fee.

**95% of International Study Centre students** who completed their course were offered a place to study at the University of Strathclyde in 2023

## Your study plan options



Note: This is an example timeline. Some exceptions apply. Find out more on the website.



# DISCOVER STUDYING IN GLASGOW, SCOTLAND

## LOCATION

**Glasgow is one of Scotland's largest, most vibrant cities.**

The city has an abundance of sights to see, as well as exciting food, music and sports scenes. It is a compact city that is full of culture. Additionally, Glasgow has excellent transport links that make it easy to visit the rest of the UK, EU and the world.

### Cultural highlights include:

- Famous artworks at the Kelvingrove Art Gallery and Museum, and Gallery of Modern Art
- Riverside Museum, displaying many objects from Glasgow's history
- Touring the city's striking street art (look out for the Panda or Spaceman)
- Multicultural food scene at the West End, including traditional Scottish fayre
- Two of the UK's major football teams – Rangers F.C. and Celtic F.C.

## ACCOMMODATION

**We can help you choose the right accommodation for you, and ensure you settle in with ease.**

While studying a programme at the International Study Centre, you can find your home abroad through Student Roost, a leading student accommodation provider, or have the option to arrange accommodation independently.

If you are younger than 18 at the start of your programme, you must stay in our approved accommodation, to which you will be invited when you confirm your place and payment plan.

**Note:** The accommodation options will vary depending on your start date. For up-to-date information, please visit [isc.strath.ac.uk/international-study-centre/accommodation](https://isc.strath.ac.uk/international-study-centre/accommodation)



## UNIVERSITY FACILITIES

**At the University of Strathclyde, the campus has everything you need for an unforgettable student experience.**

You will be part of the University from the day you start studying at the International Study Centre. As well as benefitting from resources at the International Study Centre, you will have access to all the University's facilities.

Facilities include a state-of-the-art library, a £31 million Sport, Health and Wellbeing facility, and a £60 million Learning & Teaching building.

### As a student here, you can enjoy:

- A brand-new Students' Union building with games area and bars
- Over 200 clubs and societies
- Access to Strathclyde Sport, home to over 50 sport and fitness clubs
- The Student Media Centre
- The Strathclyde International Society.

**Free bus travel across Scotland** for young people under 22 years old

Transport Scotland

# UNDERGRADUATE FOUNDATION PROGRAMME

**This programme provides progression to the second year of a four-year undergraduate degree at the University of Strathclyde.\***

The Undergraduate Foundation Programme is specially designed for international students. It provides English language and academic support that prepares you fully for an undergraduate degree study at the University.

Once you complete your pathway programme and achieve the required grades, you can start the second year of your degree at the University.†

**You can choose from two routes:**

- Business and Social Sciences
- Engineering and Sciences

\*Some exceptions apply depending on the progression aim.

†Should you not reach the grades required for progression to year two, there may be the option to progress to year one.

## KEY FACTS

**Programme length:** 3 terms

**Entry dates:** September, November (Enhanced Induction) or January

## Entry Requirements

**Academic:** Good high school grades or equivalent

**English language:** Academic IELTS for UKVI 5.0 overall (with minimum 4.5 in writing and 4.0 in other areas)†

**Age:** 17+

†Students aiming to progress to Pharmacy (MPharm) are required to have Academic IELTS for UKVI 5.5 overall (with 5.5 in writing and no sub-skill below 5.0).

## PROGRESSION DEGREES\*\*

Choose from over 100 progression degrees available, including:

- Accounting BA (Hons)
- Biology with Teaching (International) BSc (Hons)
- Biomedical Engineering BEng (Hons)
- Biomedical Science BSc (Hons)
- Chemical Engineering BEng (Hons)
- Civil Engineering BEng (Hons)
- Computer Science BSc (Hons)
- Economics & Finance BA (Hons)
- Education & TESOL BA (Hons)
- Electronic & Electrical Engineering BEng (Hons)
- Finance BA (Hons)
- International Business BA (Hons)
- Law LLB
- Marketing BA (Hons)
- Mathematics with Teaching (International) BSc (Hons)
- Mechanical Engineering BEng (Hons)
- Pharmacy MPharm
- Physics with Teaching (International) BSc (Hons)
- Politics & International Relations BA (Hons)
- Psychology BA (Hons)

\*\*There is a wide range of progression degrees available. Please note that some courses have limited places, and some degrees may have further conditions for entry and progression.



For more information about the Undergraduate Foundation Programme, please visit [isc.strath.ac.uk/programmes/undergraduate-foundation](https://isc.strath.ac.uk/programmes/undergraduate-foundation)



**7th in the UK**  
for Economics

The Times and The Sunday Times  
Good University Guide 2024

# INTERNATIONAL YEAR TWO

**This programme provides a route to the third year of a four-year undergraduate degree at the University of Strathclyde.\***

The International Year Two is equivalent to the second year of a Scottish undergraduate honours degree. It is designed to support international students who perform well-above the level needed for entry to the Undergraduate Foundation Programme.

During your time with us at the International Study Centre, you will develop your English language skills and study subject-specific modules, before completing the final two years of your undergraduate degree at the University.

By completing the International Year Two programme and achieving the required grades, you can progress to the third year of a four-year undergraduate degree.

**You can choose from two routes:**

- Business
- Computer Science<sup>†</sup>

## KEY FACTS

**Programme length:** 2 semesters

**Entry dates:** September, November (Enhanced Induction) or January

## Entry Requirements

**Academic:** Good high school graduation grades or equivalent academic study plus one year of further study<sup>^</sup>

**English language:** Academic IELTS for UKVI 5.5 overall (with minimum 5.0 in writing and 4.0 in other areas)

**Age:** 17+

\*Some exceptions apply; the Business Administration BBA offers the second year entry of a three-year undergraduate degree and the MEng offers the third year entry of a five-year degree.

<sup>†</sup>Subject to programme approval.

<sup>^</sup>For the Computer Science route, students need to have a pass grade in a Maths/numerate subject, or Physics, or Computer Science, and some curriculums may require a further year of study.

## PROGRESSION DEGREES

### Business

**Progression to year 2 of a 3-year BBA (Hons):**

- Business Administration BBA
- Business Administration BBA with specialism<sup>‡</sup>

**Progression to year 3 of a 4-year BA (Hons):**

- Economics and Business Analysis and Technology
- Economics and Finance
- Economics and Hospitality and Tourism Management
- Economics and Human Resource Management
- Economics and Marketing
- Finance and Economics
- Finance and Marketing
- Hospitality and Tourism Management and
  - Economics
  - Human Resource Management
  - Marketing
- Human Resource Management and
  - Economics
  - Hospitality and Tourism Management
  - Marketing
- Marketing and Business Analysis and Technology
- Marketing and Economics
- Marketing and Finance
- Marketing and Hospitality and Tourism Management
- Marketing and Human Resource Management

### Computer Science

**Progression to year 3 of a 4-year BSc (Hons):**

- Computer Science BSc (Hons)
- Software Engineering BSc (Hons)

**Progression to year 3 of a 5-year MEng:**

- Computer Science MEng

<sup>‡</sup>The BBA specialisms include: Economics, Human Resource Management, Hospitality and Tourism Management, or Marketing.



For more information about International Year Two, please visit [isc.strath.ac.uk/programmes/international-year-two](https://isc.strath.ac.uk/programmes/international-year-two)

**Strathclyde Business School is triple accredited:**

AACSB, EQUIS & AMBA

# POSTGRADUATE PATHWAY PROGRAMMES

## Our programmes provide a pathway to a wide variety of postgraduate degrees at the University of Strathclyde.

The Pre-Masters Programme provides academic and English language study modules to prepare you for a postgraduate degree at the University of Strathclyde. We offer the two-term standard programme, and a 12-week accelerated format.

Once you successfully complete your Pre-Masters Programme and achieve the required grades, you can start your chosen Masters degree in January or September at the University.

### CHOOSE YOUR PROGRAMME

#### Pre-Masters Programme

**Programme length:** 2 terms

**Entry dates:** November (Enhanced Induction), January or March - leading to September start at the University

**Subject routes:** Business and Social Sciences, or Engineering and Sciences

#### Entry Requirements

**Academic:** Recognised first degree in a related field

**English language:** Academic IELTS for UKVI 5.5 (with minimum 5.5 in all areas) or equivalent<sup>^</sup>

**Age:** 20+

#### Accelerated Pre-Masters Programme

**Programme length:** 12 weeks (plus induction and exam week)

**Entry dates:** September - leading to January start at the University

**Subject routes:** Business and Social Sciences, or Engineering and Sciences

#### Entry Requirements

**Academic:** Recognised first degree in a related field

**English language:** Academic IELTS for UKVI 6.0 (with minimum 5.5 in all areas) or equivalent<sup>^</sup>

**Age:** 20+

<sup>^</sup>Alternatives are accepted for the English language requirement.

**Top 25 in the world**  
for Library & Information  
Management

QS World University Rankings by Subject 2024

### PROGRESSION DEGREES\*

Depending on which Pre-Masters Programme you choose to study, there are over 130 progression degrees available, including:

- 5G Advanced Communications MSc
- Advanced Computer Science MSc
- Advanced Mechanical Engineering MSc
- Advanced Pharmacology MSc
- Biomedical Sciences MSc
- Business & Management MSc
- Civil Engineering MSc
- Data Analytics MSc
- Information & Library Studies MSc
- Information Management MSc
- International Accounting & Finance MSc
- Law LLM
- Marketing MSc
- Quantitative Finance MSc
- TESOL and Intercultural Communication MSc

\*There is a wide range of progression degrees available. Some degrees may have further conditions for entry and progression.



For more information about the postgraduate pathway programmes, please visit [isc.strath.ac.uk/programmes/pre-masters](https://isc.strath.ac.uk/programmes/pre-masters)

## ENGLISH LANGUAGE PREPARATION

If you meet the academic entry requirements for our pathway programmes but need help with your English language, you can join our English Language Preparation programme first.

The programme is designed to develop your English language skills and introduce you to essential academic and study skills before starting your main pathway programme at the International Study Centre.

For more information about the English Language Preparation programme, please visit [isc.strath.ac.uk/programmes/english-language-preparation-course](https://isc.strath.ac.uk/programmes/english-language-preparation-course)



## Join us on social media

 /iscstrathclyde

 /strathclydeisc

 /UniversityofStrathclydeInternationalStudyCentre

#MyStrathStory

## How to apply

You will need to complete an application form and submit the relevant documentation.

You can apply through your local education agent. Alternatively, you can apply directly via our website and one of our dedicated Student Enrolment Advisors will be happy to provide support through every step of the application process.

Full information on how to apply, fees, entry requirements and more, visit [isc.strath.ac.uk/how-to-apply](http://isc.strath.ac.uk/how-to-apply)



The International Study Centre programmes are provided by Study Group in collaboration with the University of Strathclyde.

### Disclaimer

This guide is intended as a general guide for students considering entry to the University of Strathclyde International Study Centre from September 2024. University of Strathclyde International Study Centre is operated, and its programmes offered by Study Group Limited ('Study Group'). This guide forms no part of any contract between you and Study Group except as provided below. The guide is prepared in advance of the academic year to which it relates, and Study Group makes every effort to ensure that the information contained here is accurate.

Although reasonable steps are taken by Study Group to provide the programmes and services described, Study Group cannot guarantee the provision of any programme. Any programme may be altered or withdrawn owing to circumstances beyond Study Group's reasonable control.

Such circumstances include (but are not limited to) industrial action, lack of demand, departure of key personnel, change in government policy, withdrawal, or reduction of funding, change of law or changes necessitated by pandemic or epidemic. Study Group will take such steps as are available to it to minimise the effect of any alteration or withdrawal of a programme and we will notify you of such alteration or withdrawal as soon as possible. Such steps may include the offer of a place on an alternative programme. Alternatively you may withdraw your application without any liability for fees (including the enrolment fee).

Please note that University of Strathclyde International Study Centre's website is the most up-to-date source of information regarding programmes and facilities, and

we strongly recommend that you always visit the website before making any commitments.

University of Strathclyde and its logo are registered Trade Marks of the University of Strathclyde. 'Study Group' and the Study Group logo are registered Trade Marks of Study Group. Unless otherwise stated, all material in this publication is copyright of Study Group. No part of this publication may be reproduced, stored in a retrieval system or transmitted in any form, or by any means, electronic, mechanical, photocopying, recording or otherwise, without the permission of Study Group.

For more information, please visit [studygroup.com](http://studygroup.com)

