



## Fine texture trendy colors for indoor and outdoor applications



### High-quality fine texture finishes

Rich colors with matte, premium finishes are trending in the architectural market. The uniformly fine texture of the coating creates a soft, matte finish and gives solid colors an elegant, sophisticated and contemporary metallic look. Twenty of the most popular hues in matte finishes are now in stock for immediate supply.

The PPG ENVIROCRON® PCS P4 Series is a high-quality, polyester-based powder coating designed to meet the requirements and needs of the architectural market. The robust and highly scratch-resistant finish extends product life, an important consideration for companies interested in sustainability.

Thanks to its enhanced edge coverage, the series offers excellent corrosion protection for aluminum extrusion and sheets, steel and galvanized steel substrates. The product formulation is resistant to contamination and allows for easy application.

### Product benefits

- High-scratch resistance
- Good hiding power to cover casting defects
- Low sensitivity to product contamination in the paint line
- Good edge coverage due to high viscosity

### Product certificates

- Qualicoat Class 1 P-1767
- GSB standard 132g approved

### Applications

- Urban furniture
- Metal office furniture
- Steel or galvanized steel for cladding
- Aluminum profiles and sheets
- Verandas
- Doors
- Window frames
- Facades



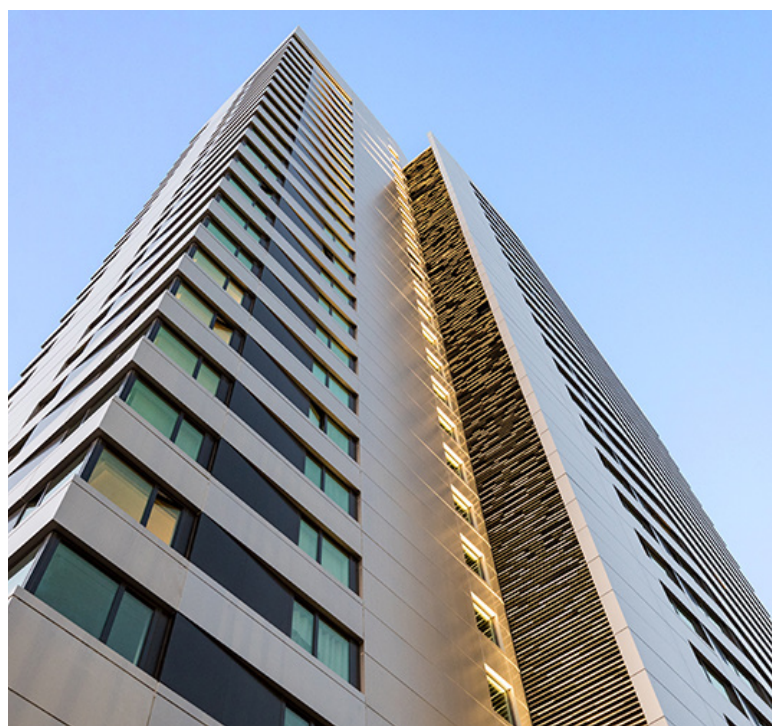


## Fine texture colors available on stock

Color	RAL	SAP Code	Item Code
	1015	442250	<b>P474P015R-YD</b>
	3004	442251	<b>P474R004R-YD</b>
	3005	442388	<b>P474R005R-YD</b>
	5010	442386	<b>P474B010R-YD</b>
	6005	442387	<b>P474E005R-YD</b>
	7012	442249	<b>P474G012R-YD</b>
	7016	441693	<b>P474G016R-YD</b>
	7021	441690	<b>P474G021R-YD</b>
	7022	442603	<b>P474G022R-YD</b>
	7024	442489	<b>P474G024R-YD</b>
	7035	442490	<b>P474G035R-YD</b>
	7039	442201	<b>P474G039R-YD</b>
	8014	442491	<b>P474H014R-YD</b>
	8019	442492	<b>P474H019R-YD</b>
	9003	441794	<b>P474W003R-YD</b>
	9004	442493	<b>P474N004R-YD</b>
	9005	441689	<b>P474N005R-YD</b>
	9010	441691	<b>P474W010R-YD</b>
	9011	442202	<b>P474N011R-YD</b>
	9016	441692	<b>P474W016R-YD</b>

Product Characteristics	
Color	21 colors available on stock (other RAL colors upon request)
Gloss	4 - 8 GU
Film thickness	60 - 80 µm
Shelf life	24 months at max 30 °C
Curing conditions	17-37 min at 170 °C 12-32 min at 180 °C 7-22 min 190 °C
Application	Tribo / Corona

Performance Properties		
Adhesion	ISO 2409	Gt0
Impact resistance	ISO 6272/ ASTMD2794	2.5 Nm / 22 inch-pound
Cylindrical Mandrel Bending	ISO 1519	5 mm
Erichsen Cupping	ISO 1520	5 mm
Humidity chamber	ISO 6270-2	1000 hrs pass - no blistering
Weathering - Florida	ISO 2810	1 year, residual gloss ≥ 50%



This document contains general information only and should not be construed as creating any warranties, express or implied. Please contact a PPG representative for additional information.

Envirocron and the PPG Logo are registered trademarks of PPG Industries Ohio, Inc. The IN Logo is a registered trademark of LinkedIn Corporation. ©2021 PPG Industries, Inc. All rights reserved. 07/21 IC150

