

# Lumen

A Sonepar Company

## ONTARIO

Special deals  
**March - April**  
2024



AIR MILES

Valid for Electrical Contractors  
ECAO and OEL members only



## AN EVENT THAT'S **UNIQUE** AND INNOVATIVE

in Québec's electrical  
industry

- 50 000 ft<sup>2</sup> area
- 175 exhibiting suppliers
- Products and innovations
- Conferences
- Guided labs

## QUÉBEC

Centre de foires

Tuesday April 16, 2024

9 am to 6 pm

## MONTRÉAL

Palais des congrès

Thursday April 18, 2024

9 am to 6 pm



FREE ADMISSION

[lumen.ca/en/exhibition](http://lumen.ca/en/exhibition)

## SIEMENS



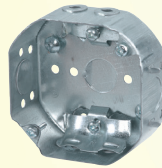
### Electrical Panel SPA Kit

120 / 240V - NEMA 3R

- 20A # SIEW0408ML112520
- 30A # SIEW0408ML112530
- 40A # SIEW0408ML112540
- 50A # SIEW0408ML112550
- 60A # SIEW0408ML112560

## Iberville<sup>MD</sup>

## ABB



### Octagonal Box

4 x 1-1/2 in

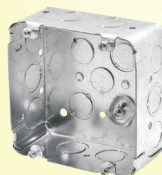
# IBE54151L



### Square Box

4 x 4 x 1-1/2 in

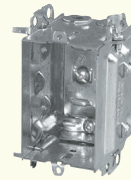
# IBE52151K



### Square Box

4-11/16 x 4-11/16 x 2-1/8 in

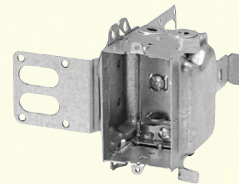
# IBE72171K



### Dry-Wall LHTQ Junction Box

3 x 2 x 2-1/2 in - 14.5 cu. in, gangable.

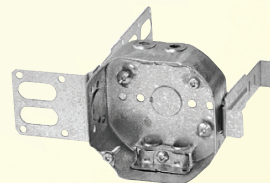
# IBE1304LHTQ



### Steel Stud Square Box with integral support bracket

3 x 2 x 2-1/2 in - 16 cu. in, gangable.  
Connector for armored and standard  
cable included.

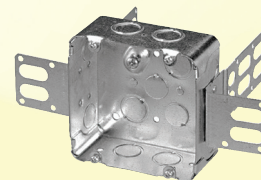
# IBE3104LSSAX



### Steel Stud Octagonal Box with integral support bracket

4 x 4 x 1-1/2 in - 15 cu. in  
Connector for armored and standard  
cable included.

# IBE54151LSSAX



### Steel Stud Square Box

4-11/16 x 4-11/16 x 2-1/8 in

# IBE72171KSSX



Suitable for wet location

**LED Surface Mount Ceiling Fixture**

7 in - 20V, 14W, 1 000LM, 4 000K, with motion detector (passive infrared), frosted polycarbonate lens, steel housing, non-dimmable, white.

Replaces 75W, incandescent  
# STACLDKMS7R14WA40WH



Suitable for wet location

**LED Surface Mount Ceiling Fixture**

120V, 2 700 / 3 000 / 3 500 / 4 000 / 5 000K, dimmable, round.

4 in - 8W, 580LM  
Replaces up to 60W, incandescent  
# STACLDK4R8WA5CWH

6 in - 15W, 1 000LM  
Replaces up to 75W, incandescent  
# STACLDK6R15WA5CWH



**LED Recessed Gimbal**

4 in - 8W, 120V, 2 700 / 3 000 / 4 000K, rotates 360°, with a maximum angle of 90°, insulated ceiling, dimmable.  
Replaces 60W, incandescent

550LM, black  
# STASWDL4R8A3CBKCHOICE

600LM, white  
# STASWDL4R8A3CWHCHOICE



Suitable for damp location

**LED Strip Fixture**

Rocker switch, aluminum housing, frosted lens, 120° beam, interconnect up to 300W, for under-cabinet or task lighting, residential or commercial use (accessories sold separately).

1 ft - 5W, 360LM  
# LUMLUUCFL12IN120V5W3KFR

3 ft - 15W, 1 050LM  
# LUMLUUCFL36IN120V15W3KFR



**LED Lamp**

A19 - 9.5W, 800LM, non-dimmable.  
Replaces 60W, incandescent

3 000K # STAA1995W30KNDCHOICE4P  
4 000K # STAA1995W40KNDCHOICE4P  
5 000K # STAA1995W50KNDCHOICE4P



Pour endroit mouillé

**Commercial LED Recessed Fixture**

120/347V, 3 000 / 3 500 / 4 000K

4 in - 7/9/12W, 595/765/1 000LM  
# STACDU4RG2PS3Q3CWH

6 in - 12/16/20W, 1 080/1 440/2 000LM  
# STACDU6RG2PS3Q3CWH

8 in - 15/20/25W, 1 800/2 200/2 900LM  
# STACDU8RG2PS3Q3CWH



**Type B High Intensity LED Filament Replacement Lamp**

EX39 base, 120 / 277V, 4 000K, suitable for open or enclosed fixtures.

ED23.5 shape, 20W, 3 500LM - Replaces 75W, HID

① # STAED23520W4KBYPEX39VFIL

ED28 shape, 40W, 7 500LM - Replaces 250W, HID

② # STAED2840W4KBYPEX39VFIL

ED37 shape, 65W, 12 000LM - Replaces 400W, HID

③ # STAED3765W4KBYPEX39VFIL

Suitable for wet location



**LED Recessed Gimbal**

Clear polycarbonate lens, dimmable

3 in - 7W, 600LM, 3 000K

White # STADLGIMBAL3INRND7W30KWH

3.5 in - 12W, 850LM, 5 CCT 2 700 to 5 000K

Black # STADLGIMBAL35INRND12W5CB

White # STADLGIMBAL35INRND12W5CW

3.5 in - 12W, 660LM, warm dim (3 000 to 2 200K)

White # STADLGIMBALRND12W3022KWH

4 in - 7W, 600LM, 3 000K

White # STADLGIMBAL4INRND7W30KWH



A19

A19 - 9.8W, 2 700K, 750LM  
Non-dimmable  
Replaces 60W, incandescent

Single  
# LAMLEDA199W27KND

Pack of 4  
# LAMLEDA199W27KND4P



A19 - 9.8W, 2 700K, 800LM  
Dimmable  
Replaces 60W, incandescent  
# LAMLEDA199W27KDIM

**LED Lamps**



PAR20

PAR20 - 7W, 3 000K, 500LM  
40° beam - Dimmable  
Replaces 50W, halogen  
# LAMLEDPAR207W3KFL



GU10

GU10 - 7W, 3 000K, 500LM  
35° beam - Dimmable  
Replaces 50W, halogen  
# LAMLEDGU107W3KFL

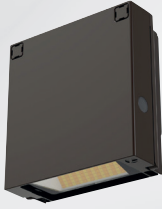


MR16

MR16 - 7W, 3 000K, 500LM  
35° beam - Dimmable  
Replaces 50W, halogen  
# LAMLEDMR167W3KFL







### Full Cut Off LED Wall Pack

120/277V, 850LM to 1 650LM, 3 000/4 000/5 000K, photocell (on / off) selectable, bronze finish.

# LITWPX0LEDALOSWW2MVPEDDB



### LED Wall Pack

120/347V, 3 000/4 000/5 000K, photocell (on / off), glass lens, cast aluminum housing, bronze finish.

16/36/59W, 2 300 to 8 500LM

Replaces up to 250W, HID

# LITTWR1LEDALOSWW2UVPEDDB

55/82/112W, 8 200 to 16 100LM

Replaces up to 400W, HID

# LITTWR2LEDALOSWW2UVPEDDB



### LED Wall Pack

120/277V, 4 000K, bronze finish.

22W, 2 950LM, photocell included

Replaces up to 100W, MH

# LITTWX1LEDP240KMVPEDDB

54W, 1 450 to 6 950LM

Replaces up to 250W, MH

# LITTWX2LEDAL040KMVDDDB

108W, 2 900 to 13 850LM

Replaces up to 250W, MH

# LITTWX3LEDAL040KMVDDDB



### LED Surface Fixture

120/277V, 4 000K, dimmable, white acrylic lens.

2 ft - 32W, 3 000LM, replaces 1 x 32W, T8

# LITFMLWL24840ZTMVOLT

4 ft - 48W, 4 600LM, replaces 2 x 32W, T8

# LITFMLWL48840ZTMVOLT

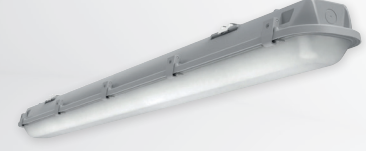


### LED Surface Fixture

4 ft - 25/55W, 120V, 3 000/4 000/5 000K, 2 000/3 000/4 000LM, white acrylic lens, interconnectable up to 6 units.

Replaces 2 X 32W, T8

# LITFMLWLLNK48ALO48SWW2



### LED Surface Fixture

4 ft - 34W, 120/277V, 5 000LM, IP66, dimmable 0/10V, frosted polycarbonate lens, captive polycarbonate latches.

Replace 2 X 32W, T8

4 000K # LITCSVTL485000LMMV4K80CR

5 000K # LITCSVTL485000LMMV5K80CR



### LED Striplight

120/347V, 3 500/4 000/5 000K, frosted acrylic lens.

2 ft - 1500/2 000/2 500LM

# LITCSSL24ALO15UVOLTSWW3

4 ft - 3 000/4 000/5 000LM

# LITCSSL48ALO3UVOLTSWW3

8 ft - 6 000/8 000/10 000LM

# LITCSSL96ALO4UVOLTSWW3



### LED Panel for T-Bar Ceiling

120/347V, 3 500/4 000/5 000K, dimmable 0/10V.

1 x 4 - 15/24/31W, 2 305 to 4 445LM

# LITCPX1X4ALO7SWW7UVOLT

2 x 2 - 15/24/31W, 2 260 to 4 400LM

# LITCPX2X2ALO7SWW7UVOLT

2 x 4 - 27/35/47W, 3 500 to 6 590LM

# LITCPX2X4ALO8SWW7UVOLT



### LED Projector

3 000/4 000/5 000K, die cast aluminium housing, integrated selectable photocell, bronze finish.

**Knuckle mount - 120/277V, 17W, 2 500LM**

Replaces 150W, halogen or 70W, HID

# LITESXF1POSWW2THKDDB

**Knuckle or yoke mount - 120/277V**

9/19/34W, 1 500 to 5 000LM

Replaces 500W, halogen or 150W, HID

# LITESXF1ALOSWW2KYDDB

22/37/56W, 3 500 to 7 500LM

Replaces 500W, halogen or 175W, HID

# LITESXF2ALOSWW2KYDDB

**Yoke or slip fitter mount - 120/347V**

53/69/100W, 8 500 to 14 000LM

Replaces 250W, HID

# LITESXF3ALOSWW2UVOLTYSDDB

111/124/150W, 16 000 to 20 000LM

Replaces 400W, HID

# LITESXF4ALOSWW2UVOLTYSDDB

177/255/342W, 30 000 to 50 000LM

Replaces up to 1 000W, HID

# LITESXF5ALOSWW2UVOLTYSDDB



### High Bay LED Fixture

120/347V, 4 000/5 000K, medium distribution, open hook with 7 ft galvanized safety cable, 6 ft cord, dimmable 0/10V, polycarbonate lens.

**12 000/15 000/18 000LM**

White # LITCPRBALO13UVOLTSWW9DWH

Black # LITCPRBALO13UVOLTSWW9DBL

**21 000/24 000/27 000LM**

White # LITCPRBALO14UVOLTSWW9DWH

Black # LITCPRBALO14UVOLTSWW9DBL

Integrated passive infrared motion sensor (on / off)

# LITCPRBALO14UVOLTSWWHMS

**Juno**



Suitable for wet location

### LED Recessed Fixture

120V, 5 CCT 2 700K to 5 000K

4 in - 9W, 670LM

Replaces up to 65W, incandescent

White

# JUNWF4SWW590CRIMW

Black

# JUNWF4SWW590CRIMB

6 in - 13W, 950LM

Replace up to 75W, incandescent

White

# JUNWF6SWW590CRIMW

Black

# JUNWF6SWW590CRIMB



**Day-Brite**  
**CFI**  
by @signify

**LED Surface Fixture**

4 ft - 120/277V, 4 000LM, 3 000/3 500/4 000K, wraparound lens and occupancy sensor.

Replaces 2 X 32W, T8  
# CFINWL440L8CSTUNVDIMOC

**PHILIPS**



**T5**  
**HO**

**Linear LED Tube**

4 ft - 24W, 120/277/347V, made of polycarbonate.  
Replaces 54W, fluorescent

3 500K, 3 300LM # PHI24T5LEDHO483500IF  
4 000K, 3 500LM # PHI24T5LEDHO484000IF  
5 000K, 3 500LM # PHI24T5LEDHO485000IF

**PHILIPS**



**T8**

**Linear LED Tube**

4 ft - 10W, 100/277/347V, 1 600LM, dimmable, frosted glass.  
Replaces 32W, fluorescent

3 500K # PHI10T8CORE48835IF15GDIM  
4 000K # PHI10T8CORE48840IF16GDIM  
5 000K # PHI10T8CORE48850IF16GDIM

**KEENE**

by @signify



**LED Ceiling Mount Fixture**

120/347V, 3 000/4 000/5 000K, die cast aluminum housing, polycarbonate lens, textured bronze finish.

28/40/60W, 3 870 to 9 130LM  
# KEEGCR60SCTG1SM510BZ  
70/80/90W, 9 000 to 13 310LM  
# KEEGCR90SCTG1SM510BZ

**KEENE**

by @signify



**LED Wall Pack**

13W, 120V, 1 200LM, 3 000K, photocell included, wall mount with galvanized mounting plate, frosted polycarbonate lens, bronze finish.

Replaces up to 70W, HID  
# KEESWLWWG1PCB1BZ

**KEENE**

by @signify



**LED Wall Pack**

12W, 120V, 1 100LM, 3 000K, photocell included, wall mount with galvanized mounting plate, frosted polycarbonate lens, bronze finish.

Replaces up to 70W, HID  
# KEELWLWWG2PCB1BZ

**EMERGI-LITE**



**LED Pictogram Exit Sign**

4.2W, plastic, self-powered

# EMECMPSSPE  
# LUMCMPSSPL



**LED Pictogram Exit Combo Unit**

2 x 1W, plastic, self-powered

# EMECMPCE  
# LUMCMPCL



**Emergency LED Lighting**

6-12V

Single - 1 x 2W  
# EMECMR1E  
# LUMCMR1L

Double - 2 x 2W  
# EMECMR2E  
# LUMCMR2L

**LUMACELL**



**LED Lighting Battery Unit**

120/347V, 27W, 2 X 2W, steel white housing, can power CMR1 and CMR2 remote heads only.

# EMECMSBE  
# LUMCMSBL

**Liteline**

**LED Projector for Track**

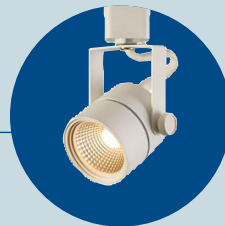
**APOLLO SERIES**



8W, 120V, 3 000K, 605LM, 38° beam, dimmable, 358° rotation, 90° tilt, white.

# LITAO10083038WH

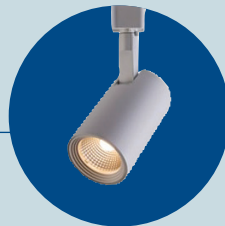
**SORA SERIES**



8W, 120V, 3 000K, 611LM, 38° beam, dimmable, 358° rotation, 90° tilt, white.

# LITSO10083038WH

**DELTA SERIES**



10W, 120V, 3 000K, 1 010LM, 38° beam, dimmable, 358° rotation, 90° tilt, white.

# LITDA2010303880WH



**Lighting Track**

20A, 120V, 1 circuit, accessories not included, white.

4 ft  
# LITATK04WH

6 ft  
# LITATK06WH

8 ft  
# LITATK08WH





## Commercial Series

### Duplex Receptacle



15A, white  
# HUBCR15WHI



20A, white  
# HUBCR20WHI



15A, isolated ground  
# HUBCR5252IG

### Switch



15A, 1P, white  
# HUBCS115W



20A, 1P, white  
# HUBCS120W



15A, 1P, 3-way, white  
# HUBCS315W

## Decorator Commercial Series

### Duplex Receptacle



15A, 125V  
# HUBDR15WHI



20A, 125V  
# HUBDR20WHI

### Switch



15A, 120/277V, 1P  
# HUBDS115W



20A, 120/277V, 1P  
# HUBDS120W



15A, 120/277V, 1P, 3-way  
# HUBDS315W



20A, 120/277V, 1P, 3-way  
# HUBDS320W



### Dimmer and Remote Control Kit

Wall mount- 150W LED and CFL, 600W incandescent and halogen. Wallplate not included.

# LUTPPKG1WWHC

### MAESTRO SERIES



### Switch with Motion Sensor

120V, passive infrared, white. Wallplate not included.

2A - Single-pole  
# LUTMSOPS2HWHC

5A - Multi-location, 3-way  
# LUTMSOPS5MHWHC



### DIVA SERIES



### Smart Dimmer Starter Caseta Kit

Control your lighting with the Pico remote control or through the Lutron app (smart hub required). Includes: dimmer, smart hub, Pico remote control with mounting plate and faceplate, white.

# LUTDVRFBGD1DC



### Clamp Meter

400A AC TRMS, CAT III 600V, w/NCVT, with non-contact voltage and temperature detection.

# IDE61737



### Reflex Premium Wire Stripper

7 in - T 45-415, 18 to 10 AWG.

# IDE45415



### ClearGlide™ Wire Pulling Lubricant

Squeeze bottle, 1L (1-qt.)

# IDE31388



### Medium Fuse Puller

250V  
5 in - 9/32 to 1/2 in diameter  
# IDE34001

0-100A, 250V and 600V  
7-1/2 in - 1/2-1 in diameter  
# IDE34002

0-100A, 250V and 600V  
11-3/4 in - 1/2-1 in diameter  
# IDE34003



### Receptacle 250V



**Surface mount**  
30A, 2P, 3 wire, NEMA 6-30R  
# LEV5376P



**Surface mount**  
50A, 2P, 3 wire, NEMA 6-50R  
# LEV5378P



**Flush mount**  
30A, 2P, 3 wire, NEMA 6-30R  
# LEV5372S00



**Flush mount**  
50A, 2P, 3 wire, NEMA 6-50R  
# LEV5374S00

### Receptacle 125 / 250V



**For oven**  
5.5 x 5.43 in - 50A, 3P, 4 wire, flush mount  
with integrated mounting plate, white.  
# LEV1279S50



**For dryer**  
5.5 x 5.43 in - 30A, 3P, 4 wire, flush mount  
with integrated mounting plate, white.  
# LEV1278S30



**Photocell**  
*Stem and swivel type.*  
120V, 6A, 1 650W to 277VAC,  
for HID or LED fixtures.  
# INTEK4236S



**Digital Electronic Timer**  
30A, 120/208V, 1 pole, 1 circuit,  
7-day astronomic programming,  
type NEMA 1 metal enclosure.  
# INTET1105C



**Extendable Weatherproof Cover**  
Heavy duty, single gang, gray.  
# INTWP7000G



### Hinged-Cover Pull Box

NEMA 1



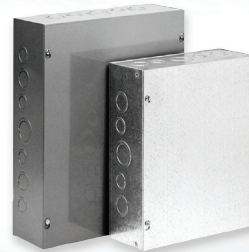
6 x 6 x 4 in  
# HOFAHE664

8 x 8 x 4 in  
# HOFAHE884

10 x 10 x 4 in  
# HOFAHE10104

12 x 12 x 4 in  
# HOFAHE12124

12 x 12 x 6 in  
# HOFAHE12126



### Screw-Cover Pull Box

NEMA 1

6 x 6 x 4 in  
# HOFASE664

8 x 8 x 4 in  
# HOFASE884

10 x 10 x 4 in  
# HOFASE10104

12 x 12 x 4 in  
# HOFASE12124



**Duplex Straight Cable Connector**  
3/8 in  
# IBE2175



**Single Screw Straight Cable Connector**  
3/8 in  
# IBE70



**Single Screw Straight Cable Connector**  
1/2 in # IBE2166  
3/4 in # IBE2167  
1 in # IBE2169



### Double Screw 90° BX Cable Connector

3/8 in # IBE2210  
1/2 in # IBE2211  
3/4 in # IBE2214  
1 in # IBE2216  
1-1/4 in # IBE2218







[flo.com](http://flo.com)

# Now in stock!

## CoRe+ Series™

The best solution for businesses who want to provide their customers and employees with first-class charging.

- ⚡ Wall-mount or pedestal
- ⚡ Single or double stations
- ⚡ Back-to-back or side-by-side
- ⚡ Standard or PoweSharing™
- ⚡ Operational in temperatures ranging from -40°C to 50°C
- ⚡ Two configurations: CoRe+ 7.2 kW and CoRe+ MAX 19.2 kW
- ⚡ Integrated Power Management technology



Heavy-duty



Safe



Made in Canada



Certified



1-Year Limited Warranty

Available at



### The solution that allows you to cut costs while planning for the future installation of EV chargers

Ask your branch representative for more information about the DCC product line and its availability.



Try the:

**DCC-9-BOX**

**DCC-11-BOX**



### GET BUILDINGS EV READY WITH US



## EV series

- For use with any SAE J1772™ compatible electric vehicle
- Cable design prevents cord from freezing and cracking
- For indoor and outdoor use with a thermoplastic, waterresistant enclosure rated NEMA Type 3R



**Standard**  
Charging Station

- 32A  
# LEVEV320
- 48A  
# LEVEV480
- 80A  
# LEVEV800

**WiFi**  
Charging Station

- 32A  
# LEVEV32W
- 48A  
# LEVEV48W
- 80A  
# LEVEV80W

**ONTARIO** - Effective from March 1 to April 30, 2024



## 200A Electric Entrance Kit with Mast # LUMKITENTRE200MATONT



**SIEMENS**

**1x Service Entrance Loadcentre**  
40/80 circuits, 1 phase,  
3 wires, 240V, 200A  
# SEQ40200

**ABB**



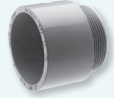
**2x Steel Locknut for Conduit Fitting**  
# BL200

**Iberville®**



**1x Duct Seal Compound**  
# DUCT1

**IPEX**  
by allaxis



**2x PVC Terminal Adapter**  
# TA35

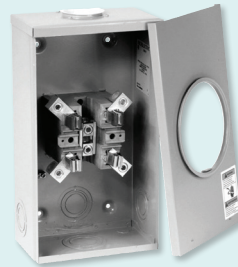
**MICROELECTRIC**



**1x 200MH Mast Kit**  
# LUM2MH



**1x Entrance Mast**  
2-1/2 in x 12 ft  
# MM12



**1x 4 Jaw Meter Socket**  
# BS2TCV



**1x LB Type PVC Access Fitting**  
# SLB60S

## 200A Electric Entrance Kit with PVC Accessories # LUMKITENTRE200PVCNT



**SIEMENS**

**1x Service Entrance Loadcentre**  
40/80 circuits, 1 phase,  
3 wires, 240V, 200A  
# SEQ40200

**MICROELECTRIC**



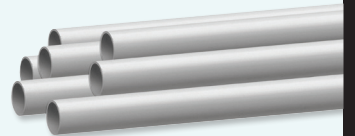
**1x 4 Jaw Meter Socket**  
# BS2TCV

**IPEX**  
by allaxis



**1x PVC Conduit Solvent Cement**  
250 ml - with applicator cap  
# S100PT5

**1x SCEPTER™ Rigid PVC Conduit**  
10 ft x 2 in  
# PVC2



**2x PVC Terminal Adapter**  
# TA35

**ABB**

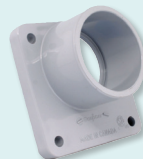


**2x Steel Locknut for Conduit Fitting**  
# BL200

**Iberville®**



**1x Duct Seal Compound**  
# DUCT1



**1x 2" PVC Meter Hub**  
# MHU35




**1x LB Type PVC Access Fitting**  
# SLB60S



**1x 2" PVC Service Entry Fitting**  
# EF35



**SHC**  
Standard Convector

---

STESH0502WCW	STESH0502W
STESH1002WCW	STESH1002W
STESH1502WCW	STESH1502W
STESH2002WCW	STESH2002W



**MIRAGE™**  
Convector

---

STEMIR0502WCW	STEMIR0502W
STEMIR1002WCW	STEMIR1002W
STEMIR1502WCW	STEMIR1502W
STEMIR2002WCW	STEMIR2002W



**ORLÉANS™**  
High-end Convector

---

STESOR0502WCW	STESOR0502W
STESOR1002WCW	STESOR1002W
STESOR1502WCW	STESOR1502W
STESOR2002WCW	STESOR2002W

**10% OFF**

WCW = WITHOUT BUIL-IN THERMOSTAT | W = WITH BUIL-IN THERMOSTAT. WHITE COLOR



1-844-STELPRO

WWW.STELPRO.COM



Platinum member




**PROMO**  
**15% DISCOUNT**

**\*WITH THE PURCHASE OF A CABLE AND A THERMOSTAT**

For a multiple cable purchase, the discount applies to the most expensive products.

**FLEXTHERM**



GreenCable**SURFACEXL**

120 V CODE	
FLEHGS120L0024	FLEHGS120L0176
FLEHGS120L0031	FLEHGS120L0195
FLEHGS120L0045	FLEHGS120L0209
FLEHGS120L0067	FLEHGS120L0240
FLEHGS120L0079	FLEHGS120L0252
FLEHGS120L0100	FLEHGS120L0276
FLEHGS120L0111	FLEHGS120L0316
FLEHGS120L0129	FLEHGS120L0356
FLEHGS120L0160	

240 V CODE	
FLEHGS240L0031	FLEHGS240L0291
FLEHGS240L0049	FLEHGS240L0320
FLEHGS240L0063	FLEHGS240L0352
FLEHGS240L0089	FLEHGS240L0390
FLEHGS240L0111	FLEHGS240L0418
FLEHGS240L0134	FLEHGS240L0480
FLEHGS240L0157	FLEHGS240L0503
FLEHGS240L0178	FLEHGS240L0553
FLEHGS240L0200	FLEHGS240L0632
FLEHGS240L0222	FLEHGS240L0712
FLEHGS240L0258	

**THERMOSTATS AND EXPANSION UNIT**

CODE	DESCRIPTION
FLEFLK50-120/240GA	Non-programmable thermostat compatible with the <b>FLETR1310</b> expansion unit
FLEFLP55-120/240GA	Programmable Wi-Fi thermostat compatible with the <b>FLETR1310</b> expansion unit
FLEFLP60-120/240GA	Programmable touchscreen thermostat compatible with the <b>FLE30</b> expansion unit
FLEFLP35-120/240GA	Programmable thermostat compatible with the <b>FLE30</b> expansion unit
FLEFLETR1310-120/240GA	Expansion unit compatible with the <b>FLK50 and FLP55</b> thermostats
FLEFLE30-120/240GA	Expansion unit compatible with the <b>FLP35 and FLP60</b> thermostats



Platinum member

1 800 353-9843

WWW.FLEXTHERM.COM



## The 3 Convectair heat pump series, for legendary comfort.

**Capella 16**  
Single Zone

**Capella 28**  
Single Zone

**Capella MZ**  
Multizone



Performance up to



-20°C

-20°C

Up to

16.8 SEER

9.7 HSPF

Performance up to



-30°C

-30°C

Up to

28.1 SEER

13 HSPF

Performance up to



-30°C

-30°C

Up to

22.5 SEER

11.3 HSPF

Contact a Convectair representative for more details. 1 800 463-7043 • [www.convectaircanada.com](http://www.convectaircanada.com)

## Accessories necessary to install a heat pump



### Wall Brackets for Outdoor Unit

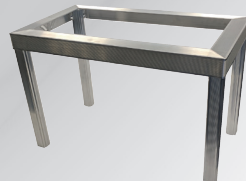
Aluminum

24 x 16 in

# CONSVLBR2416

30 x 16 in

# CONSVLBR3016



### Ground Stand for Outdoor Unit

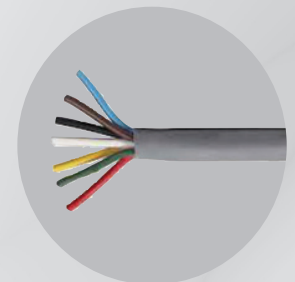
Aluminum

14-1/4 x 26 in

# CONSVLGS1426

14-1/4 x 30 in

# CONSVLGS1430



### 14 AWG Cable

75 m - 4 conductors, PVC, FT4, gray

# CAB14/4PVCFT475





# Structured Media Enclosure

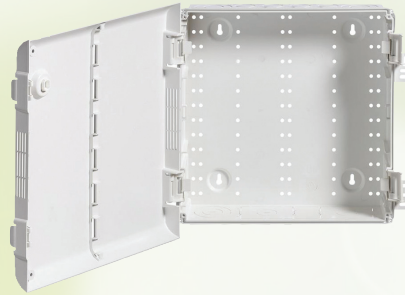
For installations in houses, multi-unit residential buildings, condos, and small businesses.



### Economical Solution

#### Plastic Media Enclosure with Vented Cover

14 in  
# LEV49605140  
28 in  
# LEV4960528W



### Standard Solution

#### Plastic Media Enclosure with Vented Hinged Door

14 in  
# LEV4960514P  
28 in  
# LEV4960528P  
42 in  
# LEV4960542P



Bulk Pack  
**6**

#### Vented Plastic Cover

28 in  
# LEV4960528F



Bulk Pack  
**6**

#### Vented Plastic Hinged Door

28 in  
# LEV4960528B



Bulk Pack  
**6**

#### Structured Media Enclosure

28 in  
# LEV4960528G

# FIRE ALARM CABLES

In stock at Lumen



### APPLICATIONS

Fire alarm cables are for use with fire monitoring/detection, power-limited fire alarm systems, smoke detectors, signaling, audio circuits, control circuits, fire protective circuits and security systems.



Non armoured unshielded cable - 300m  
# CAB18/3FAFT4300

Non armoured shielded cable - 300m  
# CAB18/3FASHFT4300

Armoured unshielded cable - 300m  
# CAB18/3FAFT4AARED300

Armoured shielded cable - 300m  
# CAB18/3FASHFT4AARED300

Also Available in the following gauges 12AWG, 14AWG and 16AWG and calibers 2c to 6c



# PEDESTAL POWER SUPPLY HAMMER HEAD SERIES

- 26" x 4" x 4"
- NEMA 3R, steel
- Includes 1 duplex 20A GFI receptacle

# DAN1IDPP120AGFIDR45H



### Thin Kerf Super SawZall Blades

6 in - 5TPI. Application: Wood with nails.

# MIL48005035



### Thin Kerf Super SawZall Blades

6 in - 24TPI. Application: EMT/Tube/Duct sheet metal.

# MIL48005186



### Thin Kerf Super SawZall Blades

18TPI. Application Rigid conduit/Strut.

6 in

# MIL48005184

9 in

# MIL48005188

12 in

# MIL48005189



### SHOCKWAVE Impact Duty Driver Bit Set - 32 Pieces

# MIL48324004



### SHOCKWAVE Impact Duty

#### Square Bit

6 in - Impact #2

Single

# MIL48324805

Pack of 10

# MIL48324815



### SHOCKWAVE Impact Duty

#### Socket Adaptor Set - 3 Pieces

2 x 1/4 in, 2 x 3/8 in, 2 x 1/2 in

# MIL48325033

### Black Oxyde Step Bit

Shank size: 3/8 in - For metal / plastic



7/8 to 1-1/8 in

# MIL48899209



7/8 to 1-3/8 in

# MIL48899212



1/4 to 1-3/8 in

# MIL48899205



### Compact Ratchet Cable Cutter

Cutting range: aluminum 750MCM, communication cables 1-1/8", copper 500MCM. Simple one-handed operation, compact for working in tight spaces.

# GRE759

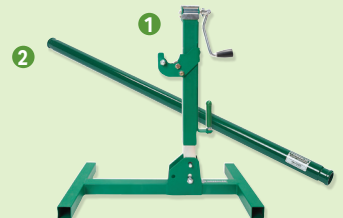


### Storage Rack for Conduit and Pipes

7 individual bins allow you to sort by size and type.

Heavy duty 6" casters included.

# GRE668



### Reel Stand (# GRE647)

Sidewind crank decreases muscle efforts to the wrist, hand and forearm. Interchangeable left and right usage. Requires 2 reel stands and 1 spindle for complete set up.

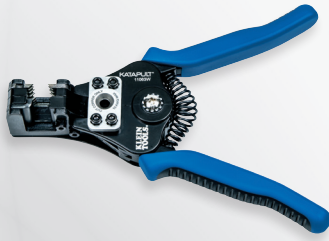
2 Spindle 62 in - 6 000 lb (2 722 kg)  
# GRE647

2 Spindle 76 in - 5 000 lb (2 268 kg)  
# GRE684





**Diagonal Cutting Pliers**  
8 in - Angled head, short jaw.  
# KLED2488



**Katapult® Wire Stripper / Cutter®**  
Cuts and strips 8-22 AWG wire with ease.  
# KLE11063W

**BUY LINEMAN'S PLIERS D2000-9NE**



9 in - Cuts ACSR, screws, nails and most hardened steel wires. High-leverage design and unique handle tempering helps absorb the "snap" when cutting wire.

# KLEKITPINCOCOUTEAU

**GET A FREE BEARING-ASSISTED OPEN POCKET KNIFE 44213\***



**Diagonal Cutting Pliers**  
8 in - High-leverage  
# KLED2288



**4-in-1 Screwdriver for Electronics**  
Four different tips: #0 & #00 Phillips and 1/8 & 3/32 in Slotted. Rotating cap for optimum and precise control.  
# KLE32581



**11-in-1 Screwdriver / Nut Driver**  
Phillips, Slotted, Square, Torx Bits.  
# KLE32500



**Dismantling Knife**  
With guide shoe at the blade point. Insulated, 1 000V.  
# KNI9855SB



**4-Piece Cobra Cutter and Plier Set**  
Includes: 8" long nose pliers with 12 AWG stripping hole, 10" diagonal cutter, 10" adjustable Cobra pliers, 8" combination pliers.  
# KNI9K008094US



**Hex-Plus L-Key Set**  
9 pieces - Multicolour, ball-end hexagon tips, with durable plastic sleeve, imperial.  
# WER022640



**Kraftform Kompakt 26**  
Retractable bayonet blade. Intergrated magazine for bit storage. Tough viscous bits for universal use. Ergonomic Kraftform handle for low-fatigue working. Comes with pouch.  
# WER051025



**Polypropylene Rope**



Twisted 3 strands, yellow. Humidity, abrasion, acid, oil and gas resistant.

3/8 in x 630 ft - Capacity 2120 lb.  
# BARA1PJ038

1/4 in x 1 300 ft - Capacity 1120 lb.  
# BARA1PJ014



Red hollow braid rope on reel  
3/8 in x 500 ft - Capacity 2 000 lb.

# BARP1PH038/05RS





**Label Printer Kit**

Automatic label formatting for wires, over 100 symbols for electricity and Datacom. Ability to create UPC, DataMatrix, and QR codes. Uses the same cartridges as BMP21PLUS. **Includes:** carrying case, lithium battery and charger. 2-year warranty.

# BRAM210KIT



**Compact Bluetooth Label Printer Kit**

IPrints from the Express Labels Bluetooth mobile app. Automatic label formatting for wires, over 14 000 symbols / 85 fonts / 22 bar code types (including QR). Uses the same cartridges as BMP21PLUS. **Includes:** carrying case, lithium battery (integrated), charger, charging power bank, belt clip and magnet. 2-year warranty.

# BRAM211KIT



**Indoor / Outdoor Vinyl Labels**

Adheres to irregular, curved or rough surfaces. Resistant to chemicals, oils and detergents (black on white).

1/2 in  
# BRAM21500595WT

3/4 in  
# BRAM21750595WT



**Nylon Cloth Label**

Wire & cable wraps. Highly pliable to conform to tightly curved surfaces (black on white).

1/2 in  
# BRAM21500499

3/4 in  
# BRAM21750499



**M210 Label Printer Only**

# BRAM210



**M211 Label Printer Only**

# BRAM211



**Hard Point™ Test Lead Set**

One pair (red / black). Cat IV 600V. Cat III 1 000V, 10A rating.

# FLUTL75



**Insulation Resistance Tester**

Measures AC/DC: 0, 1 V à 600 V. Resistance: 0, 01 Ω à 20, 00 kΩ

# FLU1507



**Digital Multimeter**

With non-contact voltage detection. CAT III, 600V

# FLU117EFSP



**Electrical Tester Kit with Holster**

**Includes:** T5-1000 CAT III 1 000V current tester, 1AC-II non-contact AC voltage detector, 4 mm detachable probes and holster.

# FLUT5H51ACKITUS



**Industrial True RMS Multimeter**

Measures up to 1 000V AC and DC. With built-in thermometer

# FLU875



**PRM-6 Phase Sequence and Motor Rotation Tester**

Test the motor rotation of 3-phase systems, and verify 3-phase receptacle wiring and phase sequencing with test leads.

# AMPPRM6





### UltraFit Corded Earplugs

Noise reduction rating: 25dB

# 3MS3404004



### SecureFit™ Protective Eyewear

*Série 200* - Anti-fog, anti-scratch polycarbonate lenses absorb 99.9% UVA and UVB rays. Certified CSA Z94.3.

Clear lens # 3MSSF201AF  
Amber lens # 3MSSF203AF



### SecureFit™ Protective Eyewear

*Série 400* - Anti-fog lens, protects against UV rays radiation. Adjustable nose pads and soft-touch temple inlays provide increased comfort and improved grip, black and green frame. Certified CSA Z94.3.

Clear lens # 3MSSF401AF  
Gray lens # 3MSSF402AF



### Half Facepiece Reusable Respirator

Offers reliable and convenient respiratory protection. Comes with sealable storage bag.

Petit # 3MS6100  
Moyen # 3MS6200  
Grand # 3MS6300



### P100 Filter

For welding, metal casting, and pharmaceutical products  
# 3MS2091

For welding, concentration of harmful organic vapours.  
# 3MS2097



### P100 Particulate Filter Cartridge

NIOSH approved for environments containing certain oil and non-oil based particles. Can be used in a variety of applications including welding, brazing torch cutting, metal pouring, soldering, etc.

# 3MS7093



### FR-Tech® Hi-Viz Coveralls

High visibility, flame resistant, 7 oz, 88% cotton, 12% nylon. \*\*Sizes : 36 to 60.

Orange # PIOV2540650\*\*  
Royal blue # PIOV2540510-\*\*



### Sweater with Hood

10.5 oz high end polyester fleece, detachable hood with drawstring, elastic cuffs and hem, 2 front pockets in bias, 2 radiophone clip straps, black.

Large # PIOV1060471L  
X-Large # PIOV1060471XL  
2X-Large # PIOV10604712XL



### 2-Piece Rainsuit

Hooded jacket and bib pant, fold into storage pouch, 100% waterproof polyester / PVC, CSA Z96-15, class 1, level 2.

Small # PIOV1080150-S  
Medium # PIOV1080150-M  
Large # PIOV1080150L  
X-Large # PIOV1080150XL  
2X-Large # PIOV10801502XL  
3X-Large # PIOV1080150-3XL



### Sentec™ Safety Glasses

Anti-scratch lens, ANSI and CSA certified.



Clear lens  
# DEN12E90801

Gray lens  
# DEN12E90802



### MicroMax® NS Coveralls

Protects against dry particles and moderate chemical liquids. Elastic hood, cuffs, waist and ankles, storm flap with zipper. EN14126 compliant. Super "B" ergonomic style.

Small # LAKEMN428SM  
Medium # LAKEMN428M  
Large # LAKEMN428L  
X-Large # LAKEMN428XL  
2X-Large # LAKEMN4282XL  
3X-Large # LAKEMN4283XL  
4X-Large # LAKEMN4284XL



### TenActiv™ Cut-Resistant Gloves

Level ANSI A5, 13-gauge, salt and pepper, polyurethane palm.

Size 6 # SUPSTAGXPU6  
Size 7 # SUPSTAGXPU7  
Size 8 # SUPSTAGXPU8  
Size 9 # SUPSTAGXPU9  
Size 10 # SUPSTAGXPU10  
Size 11 # SUPSTAGXPU11  
Size 12 # SUPSTAGXPU12



# Smoke Alarm



*Ionization, hardwired with 10-year lithium battery backup.*

**# BRK9120LBLA**



*Combination ionization and carbon monoxide, hardwired with 10-year lithium battery backup.*

**# BRKSC9120LBLA**



*Low profile photoelectric with 10 year sealed lithium battery.*

**# FIRPR710A**



Set your clock forward on **Sunday, March 10<sup>th</sup> 2024** and don't forget to:



### INSTALL

**# BRKSC9120LBLA  
# BRK9120LBLA  
# FIRPR710A**



### CLEAN

**# CRC74085**



### CHECK

**# CRC72105**



### REPLACE

**# DURPC1604BK**



**Download the Lumen app!**



Place your orders directly online at [lumen.ca](http://lumen.ca) or via the Lumen app.



## Two branches to better serve Ottawa and Eastern Ontario !

### OTTAWA EAST

1000, Belfast Road, Ottawa (ON) K1G 4A2  
**Tel. : 613 789-7500 / Fax : 613 789-7501**  
**Toll free : 1 855 589-7500**

### OTTAWA WEST

1050, Baxter Road, Ottawa (ON) K2C 3P1  
**Tel. : 613 828-2930 / Fax : 613 828-2972**  
**Toll free : 1 888 491-2930**



Prices are subject to change without notice. All images are for illustrative purposes only. Air Miles program is reserved to the Electrical Contractor ECAO or OEL members only. We are currently experiencing an exceptionally high demand for many popular products. As a result, some products advertised in this flyer may not be available. Please check your local branch for availability or visit [lumen.ca](http://lumen.ca). We are currently working on replenishing supplies as quickly as possible and apologize for any inconvenience this may cause.

POSTES		CANADA
CANADA		POST
	Port payé Courrier personnalisé	Postage paid Personalized Mail 7059489

FSC  
POUR POSITION  
SEULEMENT