



A Sonepar Company

## ONTARIO

Special deals  
**November -  
December  
2023**



AIR MILES.

Valid for Electrical Contractors  
ECAO and OEL members only

**EMERGI-LITE**



### **LED** Pictogram Exit Sign

4.2W, plastic, self-powered

# EMECMPSSPE  
# LUMCMPSSPL



### **LED** Pictogram Exit Combo Unit

2 x 1W, plastic, self-powered

# EMECMPCE  
# LUMCMPCL

**LUMACELL**



### **LED** Lighting Battery Unit

120/347V, 27W, 2 x 2W, steel white housing,  
can power CMR1 and CMR2 remote heads only.

# EMECMSBE  
# LUMCMSBL



### Emergency **LED** Lighting 6-12V

Single - 1 x 2W  
# EMECMR1E  
# LUMCMR1L

Double - 2 x 2W  
# EMECMR2E  
# LUMCMR2L

Gift  
Ideas for  
Christmas  
(pages 8 & 9)



### **CATAMOUNT® Ty-Rap™** Standard Cable Tie

UV resistant, black nylon

Bundle diameter 1-3/4 in  
7.5 in # THOL7500M

Bundle diameter 2 in  
8 in # THOL8180M

Bundle diameter 2 in  
8.5 in # THOL8400M

**ABB**



### EMT Set Steel Screw Fitting

1/2 in  
# APPTW50S

3/4 in  
# APPTW75S

1 in  
# APPTW100S



### EMT Set Steel Screw Coupling

1/2 in  
# APPTWC50S

3/4 in  
# APPTWC75S

1 in  
# APPTWC100S

**Iberville®**



### Type LB Conduit Body

For rigid conduit and EMT

1/2 in  
# IBELBA1/2

3/4 in  
# IBELBA3/4

1 in  
# IBELBA1



### Single Hole Conduit Strap

Galvanized Steel

1/2 in  
# APPTWCL50

3/4 in  
# APPTWCL75

1 in  
# APPTWCL100

**LEVITON®**



### GFI Receptacle

125V, tamper-resistant, self-test SmartlockPro GFCI,  
monochromatic, back and side wired. Nylon  
wallplate, screws and self-grounding clip included.

15A  
# LEVGFT1W

20A, for residential /  
commercial use  
# LEVGFT2W



### LED Striplight

120/347V, 3 500 / 4 000 / 5 000K, frosted acrylic lens.

48 in - 3 000 / 4 000 / 5 000LM

# LITCSSL48ALO3UVOLTSWW3

96 in - 6 000 / 8 000 / 10 000LM

# LITCSSL96ALO4UVOLTSWW3



### LED Surface Fixture

120/277V, 4 000K, dimmable, white acrylic lens.

2 ft - 32W, 3 000LM

Replaces 1 x 32W, T8

# LITFMLWL24840ZTMVOLT

4 ft - 48W, 4 600LM

Replaces 2 x 32W, T8

# LITFMLWL48840ZTMVOLT

### LED Wall Pack

120/277V, 4 000K, bronze finish.

22W, 600 to 2 950LM

Replaces up to 100W, MH

# LITTWX1LEDALO40KMVDDDB

54W, 1 450 to 6 950LM

Replaces up to 250W, MH

# LITTWX2LEDALO40KMVDDDB

108W, 2 900 to 13 850LM

Replaces up to 250W, MH

# LITTWX3LEDALO40KMVDDDB



Suitable  
for wet  
location

### LED Surface Mount Ceiling Fixture

120V, 3 000K, dimmable, polycarbonate lens, direct mounting on octagonal junction box, can be use in storage room, shower, bathroom, outside under soffit or covered area.

4 in - 10.5W, 750LM

# JUNJSBT4IN30K90CRIWLMW

6 in - 14.4W, 990LM

# JUNJSBT6IN30K90CRIMWWL



### LED Surface Mount Fixture

6 in - 15W, 120V, 1 050LM, 3 000 / 4 000 / 5 000K, with passive infrared motion sensor, frosted polycarbonate lens, aluminium housing, non-dimmable, white.

# JUNJSBT6INSWW290CRIPIRMW



Suitable  
for damp  
location

### LED Recessed Fixture

120V, 2 700 / 3 000 / 3 500 / 4 000 / 5 000K, 700 / 1 000 / 1 200LM, warm dim, renovation junction box.

4 in

# JUNJPDZ4JBRDB1WWH

6 in

# JUNJPDZ6JBRDB1WWH



A19

A19 - 9.8W, 2 700K, 750LM

Non-dimmable

Replaces 60W, incandescent

Single

# LAMLEDA199W27KND

Pack of 4

# LAMLEDA199W27KND4P

A19 - 9.8W, 2 700K, 800LM

Dimmable

Replaces 60W, incandescent

# LAMLEDA199W27KDIM



### LED Lamps



PAR20



PAR20 - 7W, 3 000K, 500LM

40° beam - Dimmable

Replaces 50W, halogen

# LAMLEDPAR207W3KFL



GU10



GU10 - 7W, 3 000K, 500LM

35° beam - Dimmable

Replaces 50W, halogen

# LAMLEDGU107W3KFL



MR16

MR16 - 7W, 3 000K, 500LM

35° beam - Dimmable

Replaces 50W, halogen

# LAMLEDMR167W3KFL



Suitable  
for wet  
location

### LED Recessed Fixture

120V, dimmable, white finish

4 in - 12W, 860LM, 75° beam

# LITSLMB412WCCTWH

6 in - 16W, 1 400LM, 80° beam

# LITSLMB616WCCTWH

Skye Series

**PROMOTION**  
**BUY 12 LIGHT FIXTURES**  
**AND GET 1 FREE**

Free



12x

### LED Recessed Fixture

120V, dimmable, white finish

4 in - 12W, 860LM, 75° beam

# LITKITSLMB4PROMO

6 in - 16W, 1 400LM, 80° beam

# LITKITSLMB6PROMO



**STANPRO****LED Hibay Fixture**

120/347V, 4 000 / 5 000K, polycarbonate lens, aluminum housing, open hook, 10 ft cord.

100/120/150W, 16 672/18 024/22 361LM

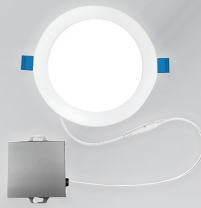
# STAL1RUHPS150Q2C

150/200W, 25 149/29 319LM

# STAL1RUHPS200Q2C

200/240W, 28 938/35 816LM

# STAL1RUHPS240Q2C

**LED Recessed Fixture**

4 in - 120V, 2 700K to 5 000K, 550LM

Replaces up to 65W, incandescent

White

# STALPDL4RND9W5CCTWHSTD

Black

# STALPDL4RND9W5CCTBKSTD

Brushed nickel

# STALPDL4RND9W5CCTBNSTD

**IP65 LED Fixture**

21W, 120/277V, 2 679LM, 3 000 / 4 000 / 5 000K, 3 mounting options (ceiling, wall and threaded conduit), grey finish aluminium die cast housing, frosted glass lens.

Replaces 150W, incandescent or 40W, CFL

# STAWJMLS1AW3CGY

**LED Compact Projector**

3 000 / 4 000 / 5 000K, 120/277V, tempered glass, bronze finish die cast aluminium housing.

15/25W, 2 100 / 3 500LM

Knuckle mount

# STAFLMPS25AW3CBRKN

Yoke mount

# STAFLMPS25AW3CBRYK

35/60W, 4 900 / 8 400LM, photocell (on/off)

Knuckle mount

# STAFLMPS60AW3CBRKNP

Yoke mount

# STAFLMPS60AW3CBRYKP

**LED Flat Panel for T Bar Ceiling**

120/347V, 3 500 / 4 000 / 5 000K, dimmable

1X4 - 20/30/40W, 2 650 to 5 100LM

# STAL3PNB1LPS40PQ3C

2X2 - 20/30/440W, 2 650 to 5 100LM

# STAL3PNB2LPS40PQ3C

2X4 - 30/40/50W, 4 000 to 6 600LM

# STAL3PNB4LPS50PQ3C

**LED Wall Pack**

120/347V, 3 000 / 4 000 / 5 000K, die cast housing, bronze color finish, transparent polycarbonate lens, integrated photocell, adjustable projection angle.

15/30W, 2 100 / 3 925LM

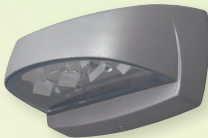
# STAWTLPS30AQ3CBRP

50/80W, 7 000 / 10 392LM

# STAWTLPS80AQ3CBRP

**@ignify****KEENE**

per @ignify

**LED Wall Pack**

10W, 120/277V, 1 050LM, 4 000K

Replaces up to 50W, HID

Titanium finish # KEELPW7G38DGY

Bronze finish # KEELPW7G38BZ

**KEENE**

by @ignify

**LED Ceiling Mount Fixture**

120/347V, 3 000 / 4 000 / 5 000K, die cast aluminium housing, polycarbonate lens, textured bronze finish.

28/40/60W, 4 100 to 8 350LM

# KEEGC60SCTG2SM510BZ

70/80/90W, 9 800 to 12 850LM

# KEEGC90SCTG2SM510BZ

**KEENE**

per @ignify

**LED Wall Pack**

120/347V, 3 000 / 4 000 / 5 000K, integrated selectable photocell, glass lens, die cast aluminium housing, bronze finish.

28/40/60W, 3 860 to 8 160LM

# KEEWP60SCTG210BZ

70/80/90/100W, 9 240 to 13 600LM

# KEEWP100SCTG210BZ

**Day-Brite****CFI**

by @ignify

**LED Surface Fixture**

4 ft - 120/277V, 4 000LM, 3 000 / 3 500 / 4 000K, wraparound lens and occupancy sensor.

Replaces 2 X 32W, T8

# CFINWL440L8CSTUNVDIMOC

**PHILIPS****LED Linear Tube**

48 in - 15W, 120/347V, ballast bypass installation, frosted glass, dimmable.

Replaces 32W, fluorescent

3 500K, 2 000LM

# PHI15T8COR48835MF20G347V

4 000K, 2 100LM

# PHI15T8COR48840MF21G347V

5 000K, 2 100LM

# PHI15T8COR48850MF21G347V

**LIGHTOLIER**

by @ignify



Suitable for damp location

**Commercial LED Recessed Fixture**

120/347V, 3 000 / 3 500 / 4 000K, aluminium white baffle reflector, dimmable 0/10V, metallic cable for connection included.

4 in - 5.5/8/12W, 500/700/1 000LM

# LIGCR4RLMCCT

6 in - 7/10/17W, 700/1 000/1 500LM

# LIGCR6RLMCCT

8 in - 10/15/21W, 1 000/1 500/2 000LM

# LIGCR8RLMCCT

10 in - 20/25/32W, 2 000/2 500/3 000LM

# LIGCR10RLMCCT


**\$259**
**LED Wall Pack**

50/80/100/120W, 120/277V, 2 200K, 12 240LM (maximum), polycarbonate lens, photocell included, grey finish aluminium molded housing.

Replaces up to 400W, HID

# RABBL2SLED120A50B22KGRPC

**NEW!**

**\$319**
**LED Post Top Fixture**

25W to 55W, 120/347V, 2 200K, 6 000LM dimmable, black finish.

Replaces up to 150W, HID

# RABXBAR1LED55A25H22K90DB



MONT-MÉGANTIC  
INTERNATIONAL  
DARK SKY  
RESERVE

Fixtures with amber colored lighting to reduce light pollution


**\$247**
**LED Adjustable Wall Pack**

100/120W, 120/347V, 2 200K, 15 273LM (maximum), polycarbonate lens, photocell included, bronze finish aluminium molded housing.

Replaces up to 400W, HID

# RABAWL3SLED120A100H22KPC


**\$187**
**Full Cut-Off LED Wall Pack**

33/45/53W, 120/347V, 2 200K, 7 560LM (maximum), polycarbonate lens, bronze finish aluminium molded housing.

Replaces up to 175W, HID

# RABWPF2LED55A33H22KBRDIM

**\$207**
**LED Adjustable Wall Pack**

50/60/80W, 120/347V, 2 200K, 9 783LM (maximum), polycarbonate lens, photocell included, bronze finish aluminium molded housing.

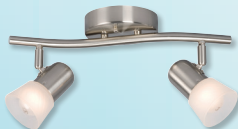
Replaces up to 250W, HID

# RABAWL2SLED80A50H22KBRPC

## DECORATIVE LIGHTING

### Rail

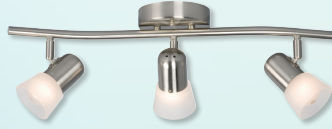
A15/R20, medium base, frosted glass, brushed nickel, lamps not included.



2 x 60W

15 x 5-3/4 x 6-3/8 in

# LUMLU754172BNFR



3 x 60W

23 x 5-3/4 x 6-3/8 in

# LUMLU754173BNFR


**LED Ceiling Mount Fixture**

120V, 3 000K, round, dimmable, white

5 in - 6W, 450LM

# LUMLU203674A

7 in - 12W, 1 000LM

# LUMLU203675A

9 in - 18W, 1 500LM

# LUMLU203646A

12 in - 24W, 2 100LM

# LUMLU203677A

**GMLighting®**

No soldering wire connections


**LED Tape Kit**

5 m - 24V, 5W per meter, 3 000K, plug in led driver 120V AC / 24V DC, remote control and mounting accessories included.

# GMLKTLE24V1530K16A


**LED Pro Series Tape**

98 ft - 24V, 3W, interior usage, can be cut every 2 in, accessories not included.

3 000K, 242LM per foot

# GMLLTRP24V30W30K100

4 000K, 251LM per foot

# GMLLTRP24V30W40K100





### Straight Strain Relief Cord Connector

Used to secure flexible cord or power cable to a box or enclosure and provide strain relief.



### Heat Shrink Tubing Kit

6 in - Thin-wall heat shrinkable tubing.

# THOHSKIT



### STA-KON™ Terminal Kit

Includes crimping tool.

# THOSKCLASSIQUE

| Product Code | Hub Size (in) | Cord Range (in) | SV, SO, ST, STO<br>Cord gauges | SJO, SJT, SJTO, SJ<br>Cord gauges  |
|--------------|---------------|-----------------|--------------------------------|------------------------------------|
| THO2920NM    | 1/2           | 0.125-0.375     | 18-2, 18-3*                    | 18-2, 18-3, 18-4, 16-2             |
| THO2921NM    | 1/2           | 0.125-0.375     | 18-2, 18-3*                    | 18-3, 18-4, 18-5, 18-6, 18-7*      |
| THO2922NM    | 1/2           | 0.310-0.560     | 16-5, 16-6, 14-2, 14-3, 14-4   | 14-3, 14-4, 12-2, 12-3, 12-4, 10-2 |
| THO2930NM    | 3/4           | 0.125-0.375     | 18-2, 18-3*                    | 16-3, 16-4*, 14-2, 14-3*           |
| THO2931NM    | 3/4           | 0.310-0.560     | 18-3, 18-4*, 18-5, 16-2*       | 16-3, 16-4, 16-5, 16-6*, 14-2      |
| THO2932NM    | 3/4           | 0.500-0.750     | 14-5, 12-2, 12-3, 12-4, 12-5   | 12-4, 10-2, 10-3, 10-4             |
| THO2940NM    | 1             | 0.310-0.560     | 18-3, 18-4*, 18-5, 16-2*       | 14-3, 14-4, 12-2, 12-3, 12-4, 10-2 |
| THO2941NM    | 1             | 0.500-0.750     | 10-2, 10-3, 10-4, 8-2          | 12-4, 10-2, 10-3, 10-4             |
| THO2942NM    | 1             | 0.700-0.950     | 10-4, 10-5, 8-3, 8-4           | 12-4, 10-2, 10-3, 10-4             |

\* The actual diameter of the cord must be determined before a suitable fitting can be chosen.



### Lock Nut

1/2 in  
# APPBL50

3/4 in  
# APPBL75

1 in  
# APPBL100



### Powertite Connector

30A, 4P, 3 wires  
# APPACP3034BC

60A, 4P, 3 wires  
# APPACP6034BC



### Powertite Receptacle

30A, 4P, 3 wires  
# APPADR3034

60A, 4P, 3 wires  
# APPADR6034



### Aluminum Mounting Box

1 outlet, AE series

3/4 in - For powertite 30A receptacle  
# APPAEE23

1 in - For powertite 60A receptacle  
# APPAEE36



Kit to produce **5 extensions of 50 feet!**

76m (250')

5X

5X



### Cable

12/3 or 14/3 SJOOW76  
Resistant to oil and water Up to 300V

+



### Valise Plug

15A, 125V  
2P, 3-Wire  
HBL5965VY

+



### Connector Body

15A, 125V,  
2P, 3-Wire  
HBL5969VY

# CABKIT14/3SJOOW76

# CABKIT12/3SJOOW76



**Decora Edge Switch**

15A, 1P, 120V

# LEVE5601W

**Decora Edge Switch**

15A, 3-way, 120V

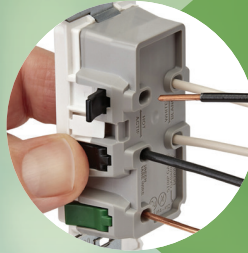
# LEVE5603W

**Decora Edge Tamper-Resistant Outlet**

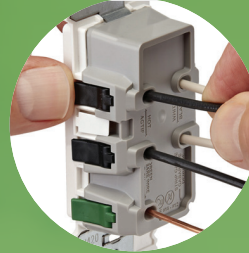
15A, 120V

# LEVE5325W

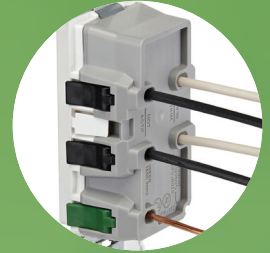
**1 PUSH**



**2 CLICK**



**3 DONE**



**Wire Pulling Lubricant**  
Yellow 77



950 ml  
# IDE31358



3.78L (1 gallon)  
# IDE31351

**IN-SURE® Lever Wire Connector**

| MODEL | PORTS         | WIRE RANGE  | QTY                      | PRODUCT CODE              |
|-------|---------------|---|--------------------------|---------------------------|
| L22   | 2 Port<br>20A | 600V*<br><br>Solid wire :<br>24 - 12 AWG  | Box of 150<br>Jar of 500 | IDE3010L22<br>IDE3050L22J |
| L23   | 3 Port<br>20A | Stranded wire :<br>24 - 12 AWG  | Box of 100<br>Jar of 350 | IDE3010L23<br>IDE3035L23J |
| L25   | 5 Port<br>20A | *1000V in panels<br>and lighting.<br>For use with Cu/Cu<br>combinations only.<br>Do not use on<br>aluminum. | Box of 75<br>Jar of 200  | IDE3010L25<br>IDE3020L25J |



**Digital Electronic Timer**

15A, 1 pole, countdown, auto shut-off.

# INTEI200W



**Weatherproof Cover**

Single-gang, plastic, mounts vertically or horizontally.

# INTWP3100C



**Electronic Timer Control**

20A, 120 / 277V, 1 circuit, NEMA 1, 1P, 7-day astronomic schedule, indoor type 1 metal enclosure.

# INTET8015C



**Digital Electronic Timer**

30A, 1 pole

# INTET1105C



RECEIVE A **FREE** DCC

WITH THE PURCHASE OF **10** UNITS  
FROM THE FOLLOWING MODELS

10x **DCC-12** OR 10x **DCC-9-40A**  
#RVEDCC12PROM010 #RVEDCC940APROM010



dyson

Just in time  
for the holidays!

Dyson Purifier Cool™ TP7A  
Dyson Cool™ Tower Fan AM07  
Dyson V8 Animal



DYSFANAM07BLACK  
DYSFANAM07WHITE

DYSPURIFAIRTP7A

DYSV8NICKEL

flo



flo.com

## CoRe+ Series™

Reliable charging and versatility  
just about anywhere!

The best solution for businesses who want to  
provide their customers and employees with  
first-class charging.

- ⚡ Wall-mount or pedestal
- ⚡ Single or double stations
- ⚡ Back-to-back or side-by-side
- ⚡ Standard or Power Sharing™
- ⚡ Operational in temperatures ranging  
from -40°C to 50°C
- ⚡ Two configurations: CoRe+ 7.2 kW and  
CoRe+ MAX 19.2 kW
- ⚡ Integrated Power Management  
technology

Heavy-duty

Safe

Made in Canada

Certified

1-Year Limited Warranty

Available at

**lumen**

ONTARIO - Effective from November 1<sup>st</sup> to December 31<sup>st</sup> 2023

f in o

lumen

7



# Gift Ideas



## Boss® ThermMD Heated Vest

Base layer with 3 adjustable settings. Heating elements located on the chest and back, includes battery operated remote control, quick rechargeable 5V power bank provides 8+ hours of warmth on a single charge, machine washable, one size fits all.

# DYN300HV100

Replacement battery for  
# DYN300HV100

# DYNPC399HVBAT

KNIPLEX



## Lineman's Pliers

Pliers black atrimentized, head polished, handles with non-slip plastic coating.

# KNI0901240SBA



## Boss® Heated Glove Liner

2 rechargeable batteries with 2.5 hours of autonomy, 3 temperature ranges, machine washable, one size.

# DYNPC399HG20

HORIZON



## Lined Cowhide Gloves

Patch palm. Acrylic pile lining.

L/XL # BAR721800BOPP



## Dry Ice 3E Contractor Safety Boot

8 in - Anti-stress insole, 100% waterproof, vibram dry ice outsole, vibram 3D bumper, flexible and comfort collar, toe and plate composite, CSA Z-195-14 certification.

| PRODUCT #      | COLOR | SIZE | PRODUCT #      | COLOR | SIZE |
|----------------|-------|------|----------------|-------|------|
| UNIUSF89400070 | Tan   | 7    | UNIUSF89401070 | Black | 7    |
| UNIUSF89400075 |       | 7.5  | UNIUSF89401075 |       | 7.5  |
| UNIUSF89400080 |       | 8    | UNIUSF89401080 |       | 8    |
| UNIUSF89400085 |       | 8.5  | UNIUSF89401085 |       | 8.5  |
| UNIUSF89400090 |       | 9    | UNIUSF89401090 |       | 9    |
| UNIUSF89400095 |       | 9.5  | UNIUSF89401095 |       | 9.5  |
| UNIUSF89400100 |       | 10   | UNIUSF89401100 |       | 10   |
| UNIUSF89400105 |       | 10.5 | UNIUSF89401105 |       | 10.5 |
| UNIUSF89400110 |       | 11   | UNIUSF89401110 |       | 11   |
| UNIUSF89400120 |       | 12   | UNIUSF89401120 |       | 12   |

Other sizes available.



## K1 Mid-Sole Ice Cleat

Adds traction in icy and snowy work conditions. Ideal for workers regularly going from outdoor to indoor environments (just rotate them). One size.

Regular # PIOV9770150OS  
Low profile # PIOV9770250OS

TINGLEY



## Orion™ Winter Over-Shoes Boot

For construction boots, nylon upper, polyurethane midsole and TPR outsole. Anti-fatigue, with heavy-duty performance.

| PRODUCT #   | SIZE     | MEN       | WOMEN       |
|-------------|----------|-----------|-------------|
| TIN7500GSM  | Small    | 4 - 5-1/2 | 6 - 7-1/2   |
| TIN7500GMD  | Medium   | 6 - 7-1/2 | 8 - 9-1/2   |
| TIN7500GLG  | Large    | 8 - 9-1/2 | 10 - 11-1/2 |
| TIN7500GXL  | X-Large  | 10 - 12   | 12 - 14     |
| TIN7500G2XL | 2X-Large | 13 - 15   | -           |



## Storm Master Pullover Head Cover

100% spun acrylic. One size, black.

# PIOV4010170



## 3-in-1 Neck Warmer

Micro-fleece, converts from neck warmer to hat or face mask. One size, black.

# PIOV4030470-O/S





### Winter Demolition Gloves

Medium # MIL48730041  
Large # MIL48730042  
X-Large # MIL48730043



### REDLITHIUM USB Bluetooth® Ear Buds

*Delivers uncompromised sound with awareness control, multiple ear tips and wings for a secure fit. Water, dust & impact resistant.*

# MIL219121



### PACKOUT Backpack

*Impact-resistant molded base that you can connect with all other PACKOUT system. Made with tear-resistant 1680D ballistic material. 48 pockets.*

# MIL48228301



### Keychain Measuring Tape

6 ft (2 m)

# MIL48225506



### LED REDLITHIUM USB Flashlight

*1 100LM, twist focus, up to 14 hours of runtime, IP67 rating, powered by the REDLITHIUM USB 3.0AH battery.*

# MIL216121



### PACKOUT Tumbler

*Keeps drink hot or cold all day, dishwasher safe.*

20 oz

# MIL48228392R

30 oz

# MIL48228393R



### Smart Digital Floor Lamp

*50 in - 120V, 720LM, RGB / CCT, WiFi connection with the Dals Connect mobile app or with your preferred AI home assistant device, black finish.*

# DALSMSTFL50BK

### Smart Digital Table Lamp

*20 in - 120V, 360LM, RGB / CCT, WiFi connection with the Dals Connect mobile app or with your preferred AI home assistant device, black finish.*

# DALSMSTTL20BK



### Portable Wireless Jobsite Speaker

*Connects wirelessly via Bluetooth or with wired 1/8" stereo auxiliary cable (included).*

# KLEAEPJS1



Caseta Wireless



### Dimmer and Remote Control Table Lamp Kit

*100W LED and CFL, 300W incandescent and halogen.*

# LUTPPKG1PWHC

DIVA SERIES



### Smart Dimmer Starter Caseta Kit

*Control your lighting with the Pico remote control or through the Lutron app (smart hub required). Includes: dimmer, smart hub, Pico remote control with mounting plate and faceplate, white.*

# LUTDVRFBDG1DC

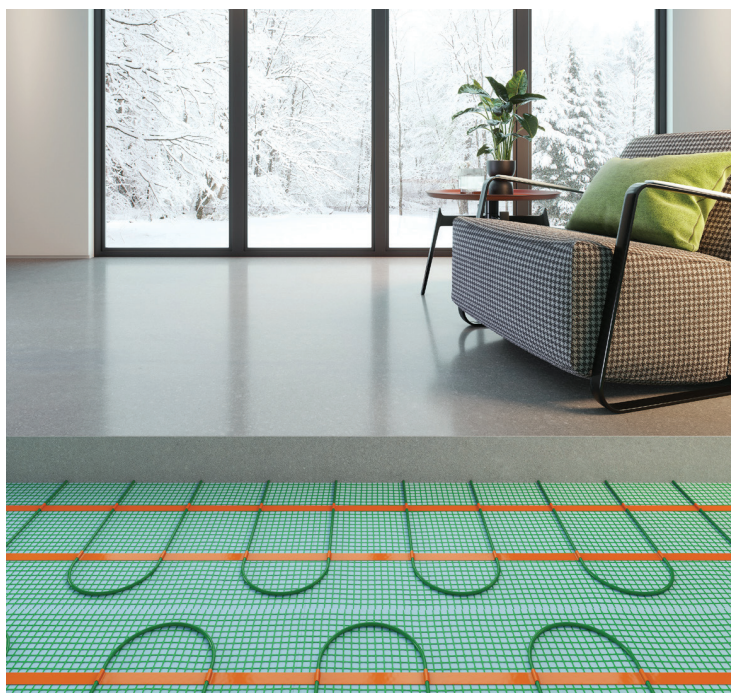


### Caseta Wireless Outdoor Smart Plug

*120V, 15A (lighting load) or 1/2HP (motor and pump load), IP65 certified rating, perfect for controlling outdoor lighting or pump motor from your phone or Caseta wireless control (Pico).*

# LUTPD150UTBL





## CONCRETE MAT XPRESS™ 6W - 240V

|                     |           |                     |           |
|---------------------|-----------|---------------------|-----------|
| FLETC240P0024 ..... | \$ 184.91 | FLETC240P0224 ..... | \$337.69  |
| FLETC240P0040 ..... | \$ 190.16 | FLETC240P0248 ..... | \$365.89  |
| FLETC240P0048 ..... | \$ 197.37 | FLETC240P0272 ..... | \$379.66  |
| FLETC240P0068 ..... | \$ 208.52 | FLETC240P0300 ..... | \$ 392.12 |
| FLETC240P0088 ..... | \$ 236.71 | FLETC240P0324 ..... | \$ 405.89 |
| FLETC240P0104 ..... | \$ 247.20 | FLETC240P0372 ..... | \$ 451.79 |
| FLETC240P0120 ..... | \$ 253.76 | FLETC240P0391 ..... | \$ 467.52 |
| FLETC240P0140 ..... | \$ 266.88 | FLETC240P0428 ..... | \$ 487.85 |
| FLETC240P0156 ..... | \$ 274.74 | FLETC240P0492 ..... | \$ 540.31 |
| FLETC240P0172 ..... | \$ 295.07 | FLETC240P0552 ..... | \$ 567.85 |
| FLETC240P0200 ..... | \$ 318.02 | FLETC240P0600 ..... | \$ 600.63 |



1 800 353-9843 | WWW.FLEXTHERM.CA



# °STELPRO



## BELLA HIGH-END BASEBOARD

|                  |          |
|------------------|----------|
| STEBA0302W ..... | \$156.42 |
| STEBA0502W ..... | \$163.53 |
| STEBA0752W ..... | \$184.86 |
| STEBA1002W ..... | \$193.55 |
| STEBA1252W ..... | \$227.52 |
| STEBA1502W ..... | \$243.32 |
| STEBA1752W ..... | \$291.51 |
| STEBA2002W ..... | \$318.37 |
| STEBA2252W ..... | \$351.55 |
| STEBA2502W ..... | \$376.83 |



## PRIMA HIGH-END COMPACT BASEBOARD

|                          |                 |
|--------------------------|-----------------|
| <b>STESPR0502W .....</b> | <b>\$69.97</b>  |
| <b>STESPR1002W .....</b> | <b>\$80.97</b>  |
| <b>STESPR1502W .....</b> | <b>\$97.97</b>  |
| <b>STESPR2002W .....</b> | <b>\$124.97</b> |



## BRAVA ELECTRIC BASEBOARD

|                 |          |
|-----------------|----------|
| STEB0302W ..... | \$47.03  |
| STEB0502W ..... | \$49.50  |
| STEB0752W ..... | \$56.93  |
| STEB1002W ..... | \$66.00  |
| STEB1252W ..... | \$77.55  |
| STEB1502W ..... | \$84.15  |
| STEB1752W ..... | \$99.83  |
| STEB2002W ..... | \$109.73 |
| STEB2252W ..... | \$120.45 |
| STEB2502W ..... | \$131.18 |



1-844-STELPRO | WWW.STELPRO.COM





# PROMOTION

## Radiant Convectors Opera Series

Offer valid from November 1 to December 31  
or while stocks last.

Discounts available for electrical contractors



*Opera B not included.*

[www.convectaircanada.com](http://www.convectaircanada.com) • 1 800 463-7043



***Lapp Canada, your single source for automation cable, industrial connectors, cable assemblies and accessories.***

- Machinery cable for all types of application (stationary, continuous flexing, and torsional)
- CSA TC FT4 rated cable for tray applications
- VFD & servo cable for all leading manufacturers
- Bus cable and industrial Ethernet cable for signal, network, and control
- Rectangular & circular connectors, cable chain, and protective conduit
- High-quality metallic & non-metallic strain relief cable glands
- Cable management accessories



# KOHLER®

## COMMERCIAL GENERATOR

Up to 150 kW, 3PH, 347 / 600V

# KOH150ERESCQS11

## RESIDENTIAL GENERATOR

26 kW, 1 PH, 240V, CSA  
Includes cold weather kit

# KOH26RCAQS50



**Become an official installer  
of Kohler generators!**

Contact your Lumen representative for details.

**Now available at Lumen**



Westinghouse

## Portable Generator



120 / 240V, 9 500W, bi-fuel, electric and remote start,  
up to 17 hours of battery life, CO<sub>2</sub> sensor,  
30A Twist-Lock outlet.

# WESWGEN9500DFC



120 / 240V, 12 000W, bi-fuel. Up to 11-hour run  
time at 50% load with remote and electric start.  
CO<sub>2</sub> sensor, 30A L14-30R Twist-Lock outlet.

# WESWGEN12000DFC

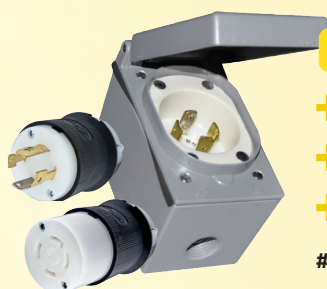


120V, 4 500W, inverter motor. Up to 18-hour  
run time at 25% load.

# WESIGEN4500DFC



## Generator Power Connector Kit



### Kit 30A

- + Generator Hook-Up Box
- + Twist-Lock® Edge 3-Port Plug
- + Twist-Lock® Edge 3-Port Connector

# HUBKITGENERATRICE30AEDGE



### Kit 50A

- + Industrial Grade Back Box
- + Portable Power Flanged Inlet
- + Twist-Lock® Female Connector

# HUBKITGENERATRICE50A





### M18 REDLITHIUM XC5.0 Batteries

2 pack, extended capacity.

# MIL48111852



### M18 FUEL 2-Tool Combo Kit

*Includes:* M18 FUEL 1/2 in hammer drill, M18 FUEL 1/4 in hex impact driver, 2x M18 REDLITHIUM XC 5.0Ah battery packs, M18 / M12 charger and carrying case.

# MIL369722



### M18 FUEL 1" SDS Plus Rotary Hammer

*with dust extractor kit*

*Includes:* 1 in SDS plus rotary hammer, HAMMERVAC 1 in dedicated dust extractor, 2x REDLITHIUM HIGH OUTPUT XC6.0 battery pack and a M18 / M12 rapid charger.

# MIL291222DE



### M18 FUEL 7-Tool Combo Kit

*Includes:* 1/2 in hammer drill / driver, 1/4 in HEX impact driver, recip saw, 6-1/2 in circular saw, 4-1/2 to 5 in braking grinder, 1/2 in mid-torque impact wrench, worklight, 2x REDLITHIUM XC5.0 extended battery pack and a M12 / M18 multi-voltage charger.

# MIL369727



### Kraftform Kompakt Turbo Screwdriver Kit

*16 pieces - Imperial, 4x the screwdriving speed with turbo function (purely mechanical - no battery required). Turbo functions can be deactivated.*

# WER057485



### Kraftform Kompakt 60 Screwdriver Kit

*17 pieces - Imperial, rapidaptor quick release chuck. Comes in a robust pouch.*

# WER051042



### Poly Line

*With 6 500 ft green tracer. Used to pull rope through conduit.*

# GRE430



### Winter Gel Pulling Lube

*1 gallon - Gel will not freeze below -31°C.*

# GREWGEL1



### Diagonal Cutter

*For plastic with opening spring.*

# KNI7201160SB



### Aluminum Hand Bender

*For 1/2" EMT*

# GRE840AH

*1/2" rigid conduit or 3/4" EMT*

# GRE841AH



### Glo Stix™ Kit

*3/16 in x 15 ft - Three luminescent fiberglass 5 ft rods glow in the dark to make fishing data wires easier in dark spaces. Includes: bullet and "J" hook nose tips.*

# GRE54015



### Bushings for Metal Stud Punches

*For pre-punched hole or 1-11/32" diameter hole punched by 710.*

*Pack of 100*

# GRE712A100

*Pack of 1 000*

# GRE712A1000



**FLUKE**



### True-RMS Clamp Meter

Measures current 400A AC, voltage AC/DC, continuity, resistance up to 4K Ohm, temperature and capacitance. With backlit display. Safety level CAT IV 300V / CAT III 600 V.

# FLUKIT324



### True-RMS Clamp Meter

Measures current 400A AC/DC, voltage AC/DC, continuity, resistance up to 40K Ohm, temperature and capacitance. With frequency meter and backlit display. Safety level CAT IV 300V/CAT III 600 V.

# FLUKIT325



### True-RMS AC / DC Clamp Meter

Clamp meter with iFlex transmits results via Fluke Connect Measurements app, stays safely away from the arc flash zone through Bluetooth connectivity to Apple and Android devices.

# FLUKIT376FC



### Electrical Tester

CAT III, 1 000V. Voltage, continuity and current tester. Excellent front-line troubleshooting and measurement tool.

# FLUKITT51000



**AND GET A FREE  
VOLTAGE DETECTOR  
(1ACA111)**



### Electrical Tester

AAC / DC up to 600V, measures current up to 100A without breaking the circuit with OpenJaw technology.

# FLUKITT5600



### Electrical Tester

Integrated FieldSense technology, measure by sliding the open fork over a conductor to see the voltage level without the need for test leads.

# FLUKITT6600



### Electrical Tester

**Includes:** Attached test leads with 4 mm probe caps, removable black crocodile clip, AC285 SureGrip<sup>MD</sup> and H-T6 Holster.

# FLUKIT61000PRO

**KLEIN TOOLS**

## Collection MODbox™



### A Electrician's Backpack

32 pockets for maximum tool and gear storage and includes a spacious interior for large hand tools, steady molded front pocket helps protect items like phones and safety glasses, extra padding on the back extends over the hard bottom for carrying comfort.

# KLE62201MB

### B Tool Carrier Rail Attachment

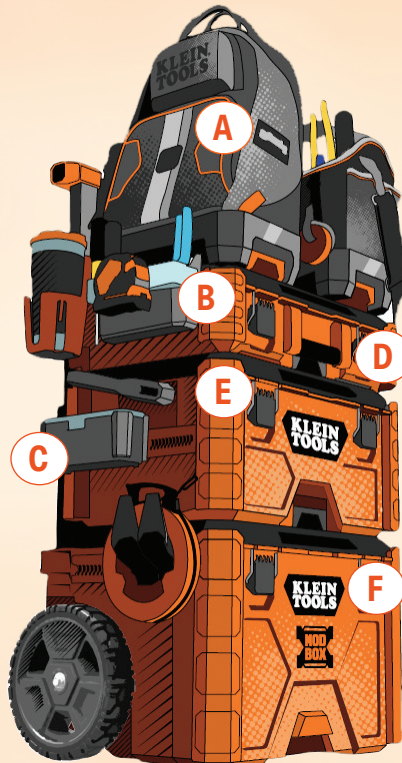
Secure your rail attachments inside the rolling and medium toolboxes. It keeps rail attachments securely in place and prevent shifting inside the toolbox when not in use on the outside rails.

# KLE54814MB

### C Parts Bin Rail Attachment

Connects to side rails to keep tool accessible on the worksite. The storage compartment comes with removable dividers for added modularity.

# KLE54815MB



### Internal Rail Accessory

Secures all rail attachments inside MODBox™ rolling toolbox and medium toolbox. Use handle side up or down depending on the clearance needed.

# KLE54818MB

### D Small Toolbox

22 x 15.5 x 6.6 in - Capacity 75 lb

# KLE54804MB

### E Medium Toolbox

22 x 15.5 x 11.7 in - Capacity 100 lb

# KLE54803MB

### F Rolling Toolbox

22.6 x 19.88 x 44 in - Capacity 250 lb

# KLE54802MB





### DO NOT OPERATE Lockout Tag

5-3/4 x 3 in

# BRA65520



### Steel Lockout Hasp with Tab

1 in diameter jaws and 3/8 in diameter lock holes.

# BRA105718



### Electrical Breaker Lockout Tagout Kit

With nylon safety padlock in pouch.

**Includes:** 1 in lockout hasp, clamp-on circuit breaker lockout 480/600V, lockout pouch, nylon safety lockout padlock, 2x clamp-on circuit breaker lockouts 120/277V, 5x lockout tags, 5x zip ties.

# BRA153669



### Nylon Safety Lockout Padlocks

1.77 in H x 1.5 in W x 0.82 in D - Keyed different, steel shackle. Key-retaining brass cylinder prevents key removal in the unlocked position for added safety and helps limit lost keys. Shackle Vertical Clearance: 1.5 in.

Blue # BRASDPLBLU38STKD  
Green # BRASDPLGRN38STKD  
Orange # BRASDPLORG38STKD  
Yellow # BRASDPLYLW38STKD  
Red # BRASDPLRED38STKD

Red - Pack of 12

# BRASDPLRED38STKD12

Red - Pack of 24

# BRASDPLRED38STKD24



### Aluminum Safety Lockout Padlocks

1.8 in H x 1.5 in W x 0.75 in D - Keyed different, steel shackle, durable, corrosion-resistant and ideal for general lockout applications. Shackle vertical clearance: 1.5 in.

Blue # BRASDALBLU38STKD  
Green # BRASDALGRN38STKD  
Orange # BRASDALORG38STKD  
Yellow # BRASDALYLW38STKD  
Red # BRASDALRED38STKD

Red - Pack of 12

# BRASDALRED38STKD12

Red - Pack of 24

# BRASDALRED38STKD24



### Cold Weather Hi-Viz Gloves

Orange, enhanced grip. Does it all without compromising dexterity and movement.

Medium # EDM970119  
Large # EDM9701110  
X-Large # EDM9701111



### N95 Particulate Respirator

Adjustable nose clip reduces potential for eyewear fogging and helps ensure a better seal and fit. Two-strap design with welded dual point attachment, without valve.

# 3MS8210



### Safety Glasses

Blue / gray frame, with anti-fog and anti-scratch lenses.

Clear lens # 3MSSF401SGAFBLUF  
Gray lens # 3MSSF402SGAFBLUF



### Magnesium Chloride Flakes

Melts down to -25°C (-13°F), safe to use around pets, vegetation and plants.

3.5 kg  
# WAR45004  
20 kg  
# WAR45020



### Super 33+ Vinyl Electrical Tape

3/4 in x 66 ft - 7 mil.  
All-weather, -18 to 105°C  
(0 to 220°F), black.

# TRO333/4X66



### Super 88 Vinyl Electrical Tape

3/4 in x 66 ft - 8.5 mil.  
All-weather, -18 to 105°C  
(0 to 220°F), black.

# TRO883/4X66



### Linerless Rubber Splicing Tape

3/4 in x 30 ft - 30 mil. 130C, black.

# TRO130C3/4X30



# DURACELL<sup>MD</sup>



## 1.5V Alkaline Procell<sup>®</sup> Constant Battery

**AA - Box of 24**  
# DURKITPC1500TC24

**AAA - Box of 24**  
# DURKITPC2400TC24

**C - Box of 12**  
# DURKITPC1400TC12

**D - Box of 12**  
# DURKITPC1300TC12

**9V - Box of 12**  
# DURKITPC1604TC12

Has been completely redesigned for longer lasting performance in low and medium continuous flow devices.

- Wireless keyboard and mouse
- Smoke/carbon monoxide detector
- Laser level
- Glucometer
- Digital gauges



## 1.5V Alkaline Procell<sup>®</sup> Intense Power Battery

**AA - Box of 24**  
# DURKITPX1500TC24

**AAA - Box of 24**  
# DURKITPX2400TC24

**C - Box of 12**  
# DURKITPX1400TC12

**D - Box of 12**  
# DURKITPX1300TC12

**9V - Box of 12**  
# DURKITPX1604TC12

Offers up to 50% longer lasting performance, with pump or mechanism to provide precise pulses of high rate energy, for professional devices.

- Soap or paper towel dispensers
- Hands-free faucets
- Disinfectant dispenser
- Electronic door lock
- Motorized sun visor



## Smoke Alarm



Ionization, hardwired with 10-year lithium battery backup.

# BRK9120LBLA



Combination ionization and carbon monoxide, hardwired with 10-year lithium battery backup.

# BRKSC9120LBLA



Low profile photoelectric with 10 year sealed lithium battery.

# FIRPR710A

We're setting back the time on **Sunday, November 5th 2023**, don't forget to...



### INSTALL

# BRKSC9120LBLA  
# BRK9120LBLA  
# FIRPR710A



### CLEAN

# CRC74085



### CHECK

# CRC72105



### REPLACE

# DURPC1604BK

Two branches to better serve Ottawa and Eastern Ontario !

### OTTAWA EAST

1000, Belfast Road, Ottawa (ON) K1G 4A2  
Tel. : 613 789-7500 / Fax : 613 789-7501  
Toll free : 1 855 589-7500

### OTTAWA WEST

1050, Baxter Road, Ottawa (ON) K2C 3P1  
Tel. : 613 828-2930 / Fax : 613 828-2972  
Toll free : 1 888 491-2930

**Lumen**  
A Sonepar Company

Prices are subject to change without notice. All images are for illustrative purposes only. Air Miles program is reserved to the Electrical Contractor ECAO or OEL members only. We are currently experiencing an exceptionally high demand for many popular products. As a result, some products advertised in this flyer may not be available. Please check your local branch for availability or visit [lumen.ca](http://lumen.ca). We are currently working on replenishing supplies as quickly as possible and apologize for any inconvenience this may cause.



FSC  
POUR POSITION  
SEULEMENT