

# Lumen

A Sonepar Company

## ONTARIO

### Special deals May - June 2023



AIR MILES

Valid for Electrical Contractors  
ECAO and OEL members only

## NOVOLED

### LED Lamps

MR16



**MR16 - 7W, 3 000K, 500LM**  
35° beam - Dimmable  
Replaces 50W, halogen  
# LAMLEDMR167W3KFL



GU10



**GU10 - 7W, 3 000K, 500LM**  
35° beam - Dimmable  
Replaces 50W, halogen  
# LAMLEDGU107W3KFL



PAR20



**PAR20 - 7W, 3 000K, 500LM**  
40° beam - Dimmable  
Replaces 50W, halogen  
# LAMLEDPAR207W3KFL



A19



**A19 - 9.8W, 2 700K, 800LM**  
Replaces 60W, incandescent

Non-dimmable  
# LAMLEDA199W27KND

Dimmable  
# LAMLEDA199W27KDIM



## nvent HOFFMAN



### Splitter Trough

NEMA 1

3 ft - 200A, 3 wires  
# HOFAST3223R

4 ft - 200A, 3 wires  
# HOFAST4223R

3 ft - 400A, 3 wires  
# HOFAST3403R

4 ft - 400A, 3 wires  
# HOFAST4403R

6 ft - 600A, 3 wires  
# HOFAST6603R

## SIEMENS

### DISTRIBUTION PANEL

Single phase 120 / 240V, NEMA, with main circuit breaker



### SEQ Series

100A - 24 / 48 circuits  
# SIESEQ24100SM

125A - 24 / 48 circuits  
# SIESEQ24125SM

100A - 32 / 64 circuits  
# SIESEQ32100SM

PHILIPS



**Linear LED Tube**

4 ft - 10W, 100/277/347V, 1600LM, dimmable, frosted glass

Replaces 32W, fluorescent

- 4 000K # PHI10T8CORE48840IF16GDIM
- 5 000K # PHI10T8CORE48850IF16GDIM

PHILIPS



**Linear LED Tube**

4 ft - 24W, 120/277/347V, made of polycarbonate

Replaces 54W, fluorescent

- 3 500K, 3 300LM # PHI24T5LEDHO483500IF
- 4 000K, 3 500LM # PHI24T5LEDHO484000IF
- 5 000K, 3 500LM # PHI24T5LEDHO485000IF

KEENE

by signify



**LED Ceiling Mount Fixture**

120/347V, 3 000/4 000/5 000K, die cast aluminum housing, polycarbonate lens, textured bronze finish.

- 28/40/60W, 3 870 to 9 130LM
- # KEEGCR60SCTG1SM510BZ
- 70/80/90W, 9 000 to 13 310LM
- # KEEGCR90SCTG1SM510BZ

LIGHTOLIER

by signify



Suitable for wet location

**LED Recessed Fixture**

2 700/3 000/3 500/4 000/5 000K, white trim

4 in - 11W, 700LM

Replaces 65W incandescent lamp

# LIGFD4R7ESCT1W

6 in - 15W, 1 100LM

Replaces 75W incandescent lamp

# LIGFD6R11ESCT1W

LIGHTOLIER

by signify



Suitable for damp location

**Commercial LED Recessed Fixture**

120/347V, adjustable lumen output and CCT  
3 000/3 500/4 000K, aluminium white baffle reflector, dimmable 0/10V, metallic cable for connection included.

4 in - 5.5/8/12W, 500/700/1 000LM

# LIGCR4RLMCCCT

6 in - 7/10/17W, 700/1 000/1 500LM

# LIGCR6RLMCCCT

Day-Brite

CFI  
by signify



**LED High Bay Fixture**

120/347V, 4 000/5 000K, suspension open hook, 6 ft cord, 0/10V dimmable, motion sensor receptacle, polycarbonate lens.

14 000 to 21 000LM

# CFHICY1421L8CSTUN3DIM

28 000 to 33 000LM

# CFHICY2833L8CSTUN3DIM

STANPRO



**LED Recessed Fixture**

3.5 in - 12W, 3 000K, 920LM, pivoting light source.

Replaces 50W, halogen

- White # STAGMB12WA9030WH
- Brushed nickel # STAGMB12WA9030BN
- Black # STAGMB12WA9030BK



**LED Wraparound Surface Fixture**

120/277V, 4 000K, frosted polycarbonate lens.

2 ft - 27W, 2 695LM, replaces 1 x 32W, T8

Interconnectable up to 15 units

# STAL2WMG241G2

4 ft - 47W, 5 043LM, replaces 2 x 32W, T8

Interconnectable up to 8 units

# STAL2WMG481



**LED Strip Fixture**

With motion sensor

4 ft - 34/38/45W, 120/347V, 3 500/4 000/5 000K, 4 930 to 6 660LM

# STAL2TRV48LP45Q3C



**LED Projector**

120/277V, 3 000/4 000/5 000K, cast aluminum housing, polycarbonate lens, bronze finish.

50/80/100/150W, 6 800 to 19 200LM

1 Bracket mount

# STAKITFLBMP150MW3CBRETR

2 Pole mount 2-1/2 in

# STAKITFLBMP150MW3CBRPOT



**LED Surface Fixture**

4 ft - 3 500/4 000/5 000K, dimmable 0/10V, IP66, NSF, NEMA 4X, polycarbonate lens, stainless steel clips, V hook included.

42W, 120/277V, 5 450LM

# STAVTL4LS3W3C

67W, 120/277V, 8 560LM

# STAVTL4LS4W3C



**LED Strip Fixture**

120/347V, 3 500/4 000/5 000K, acrylic frosted lens

4 ft - 34/38/45W, 4 930 to 6 660LM

# STAL2STR48LP45Q3C

8 ft - 65/70/90W, 9 230 to 12 240LM

# STAL2STN96LP90Q3C



### LED Panel for T-Bar Ceiling

120/347V, 3 500/4 000/5 000K, dimmable 0/10V

- 2 x 2 - 19/28/37W, 2 400 to 4 500LM  
# LITCPX2X2ALO7SWW7UVOLT
- 2 x 4 - 28/36/50W, 3 800 to 6 500LM  
# LITCPX2X4ALO8SWW7UVOLT

### LED Projector

120/277V, 3 000/4 000/5 000K, die cast aluminium housing, integrated selectable photocell, bronze finish.

#### Knuckle mount

17W, 2 500LM  
Replaces 150W, halogen or 70W, HID  
# LITESXF1P0SWW2THKDDB

#### Knuckle or yoke mount

9/19/34W, 1 500 to 5 000LM  
Replaces 500W, halogen or 150W, HID  
# LITESXF1ALOSWW2KYDDB  
22/37/56W, 3 500 to 7 500LM  
Replaces 500W, halogen or 175W, HID  
# LITESXF2ALOSWW2KYDDB



Suitable for wet location

### LED Surface Mount Ceiling Fixture

6 in - 15W, 3 000/4 000/5 000K, 1 000LM, Dimmable, polycarbonate lens, direct mounting on octagonal junction box, can be use in storage room, shower, bathroom, outside under soffit or covered area.

# JUNJSBT6INSWW290CRIWLMW



### LED Wallpack

7/12/17W, 120/277V, 3 000/4 000/5 000K, 1 000 to 2 400LM, photocell (on/off), dark brown polycarbonate housing, polycarbonate lens, die cast aluminium mounting back plate.

Replaces up to 100W, HID  
# LITTSWLEDALOSWW2MVPEDDB



### LED Wallpack

120/347V, 3 000/4 000/5 000K, photocell (on/off), glass lens, cast aluminum housing, bronze finish.

16/36/59W, 2 300LM to 8 500LM  
Replaces up to 250W, HID  
# LITTW1LEDALOSWW2UVPEDDB

55/82/112W, 8 200LM to 16 100LM  
Replaces up to 400W, HID  
# LITTW2LEDALOSWW2UVPEDDB



Suitable for wet location

### LED Retrofit Module

For 5 or 6 in housing, 10.5W, 120V, 900LM, 2 700/3 000/3 500/4 000/5 000K, dimmable, aluminium baffle reflector paint white, diffuse lens, adjustable torsion springs, quick connector, E26 medium base socket adaptor.

Replaces 75W, incandescent  
# JUN65BEMWSWW590CRI



Suitable for wet location

### LED Recessed Fixture

4 in - 8W, 120V, 2 700/3 000K/3 500/4 000/5 000K, 560LM, dimmable, with 3 magnetic trims (white, black, silver), direct mount on octagonal junction box or in a existing 4 in recessed can (for retrofit purpose).

# LITSLMT48W



Suitable for wet location

### LED Recessed Fixture

4 in - 12W, 120V, 860LM, 2 700/3 000/3 500/4 000/5 000K, 75° beam, dimmable, white finish

# LITSLMB412WCCTWH

### SKYE SERIES



### Magnetic Trim

For 4 in round Skye recessed fixture

- Black # LITSLMB412WRTBK
- Brushed nickel # LITSLMB412WRTBN
- Oil bronze # LITSLMB412WRTOB



### MAESTRO SERIES



#### Switch

120V, 2A, 150W DEL, 250W incandescent, with motion sensor, for residential use, white. Wallplate not included.

# LUTMSOPS2HWHC

### SKYLARK SERIES



#### Dimmer

Compatible with : LED, incandescent, halogen, CFL, single and 3-way, white. Wallplate not included.

# LUTCTCL153PWH

### Caseta Wireless

#### Kit Caseta

Includes: dimmer, wallplate, remote and smart bridge.

# LUTPBDGPKG1WC



## LANDSCAPE LIGHTING



### LED Path Light Fixture

**Round head - 93° beam**

20 in tall - 8W, 360LM, 12VAC,  
2 200 / 2 700 / 3 000 / 3 500 / 4 000K,  
aluminum construction, ground stake  
included, frosted lens, black finish.

# DALLPP20CCBK



### LED Path Light Fixture

**Lantern head - 147° beam**

26 in tall - 13W, 800LM, 12VAC,  
2 200 / 2 700 / 3 000 / 3 500 / 4 000K,  
aluminum construction, ground stake  
included, frosted lens, black finish.

# DALLPL26CCBK



### LED Path Light Fixture

**Square head - 90° beam**

12 in tall - 3W, 265LM, 12VAC,  
2 200 / 2 700 / 3 000 / 3 500 / 4 000K, cast  
aluminum construction, ground stake and 21 in  
extension arm included, frosted lens, black finish.

# DALLSQPCCBK



### LED Path Light Fixture

**Rectangular - 109° beam**

12VAC, 3 000K, aluminum construction,  
ground stake included, frosted lens, black finish.

20 in tall - 12W, 600LM  
# DALLRB20CCBK

26 in tall - 13W, 700LM  
# DALLRB30CCBK



### Transformer

300W, 120V to 12 / 13 / 14 / 15VAC, with  
timer, photocell, metal housing, black finish.

# LUMLULTR300BK



### Transformer

60W, 120V to 12VAC, with timer, photocell,  
pluggable, plastic housing, black finish.

# LUMLULTRP60BK



### String Lights

48 ft - 15 LED bulbs, 24VDC, 24W, 1 200LM, 2 200 to  
4 000K + RGB, black finish, IP65, plug in driver and on wire  
remote control included, bluetooth technology, compatible  
with Google Assistant and Amazon Alexa (pro core driver  
needed), Dals connect apps required.

# DALDCPSTG48



### LED Projector

12VAC, 2 200 / 2 700 / 3 000 / 3 500 / 4 000K,  
180° directional, interchangeable clear lens  
of 10° / 40° / 90°, aluminum housing, ground  
stake included, black finish.

3 in diameter - 10W, 500LM  
# DALLSP3CCLBK

4 in diameter - 20W, 1 000LM  
# DALLSP4CCLBK



### Low Voltage Cable

50 ft - Caliber 14  
# LUMLULCBL5014

50 ft - Caliber 16  
# LUMLULCBL5016

100 ft - Caliber 12  
# LUMLULCBL10012

100 ft - Caliber 14  
# LUMLULCBL10014

100 ft - Caliber 16  
# LUMLULCBL10016

200 ft - Caliber 12  
# LUMLULCBL20012



### Dimmable LED Driver

12V DC (54W maximum, 30W minimum load),  
direct connection, Nema 3R enclosure for exterior  
usage, 2 waterproof cable connectors (magekosr)  
required for exterior installation.

# MAGMLDRE6012DM



### LED Step Light

1 in diameter x 3-1/2 in long - 0.24W, 12V, 2 900K, round,  
dimmable, cast aluminum barrel and faceplate, interior  
and exterior usage, frosted lens, aluminum color finish.

Without dome

# MAGLEDMDWWAL

With dome

# MAGLEDMDSWWAL



### LED Step Light

1.5 in diameter x 4 in long - 3W, 12V, 2 700K, 95LM,  
round, dimmable, stainless steel barrel and faceplate,  
interior and exterior usage.

1 Frosted lens  
# MAGLEDDFWW

1 Clear lens  
# MAGLEDDCWW

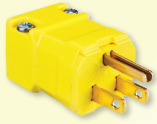
2 Clear lens, with dome  
# MAGLEDDCWWD



**Circuit-Lock®**

**Unfused Disconnect Switch**

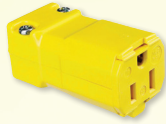
30A - 3P, 600V, IP69K, NEMA 4X, industrial grade, non-metallic, NSF certified.



**Valise Plug**

15A, 125V, 2P, 3 wires.

# HUBHBL5965VY



**Valise Connector Body**

15A, 125V, 2P, 3 wires.

# HUBHBL5969VY



# HUBHBLDS3



With integrated LED indicators  
# HUBHBLDS3P

**Circuit-Lock® Enclosure**



**Motor Disconnect**

NEMA 4X, 12, commercial grade.

30A, 7.5HP # HUBMD30  
60A, 20HP # HUBMD60



30A - 3P, 600V, NEMA 3  
# HUBHBL13R89



60A - 3P, 600V, NEMA 3  
# HUBHBL16R93D



30A - 600V, NEMA 1, with switch  
2P # HUBHBL1372  
3P # HUBHBL1379



**GFI Receptacle**

Self-test SmartlockPro GFCI, monochromatic, back and side wired, white.  
Nylon wallplate, screws and self-grounding clip included.



15A, 125V, tamper resistant  
# LEVGFTR1W



15A, 125V  
# LEVGFNT1W



20A, 125V, tamper resistant, for residential / commercial applications.  
# LEVGFTR2W



20A, 125V, for residential / commercial applications.  
# LEVGFNT2W

**White Toggle Switch**



1P, 15A, 120V  
# LEV56912W



1P, 15A, 347V  
# LEV5691CW



3-way, 15A, 120/277V  
# LEV56932W



3-way, 15A, 347V  
# LEV5693CW

**GFI Receptacle**

Combination charger USB Type A/C 24W (4.8A),  
Self-test SmartlockPro GFCI



15A, NEMA 5-15R  
# LEVGUAC1W



20A, NEMA 5-20R  
# LEVGUAC2W

Costs up to 99% less to run than paper towels\*

- # DYSHU02BLANC
- # DYSHU02ARGENT
- # DYSHU02ARGENT208V



dyson airblade V

\*Average electricity price \$0.1/kWh as of April 2021. For calculations visit [www.dysoncanada.ca/calcs](http://www.dysoncanada.ca/calcs).

Cool down for the summer

- # DYSFANAM07BLACK
- # DYSFANAM07WHITE



dyson cool



**Water Heater for Above Ground Pool**

240V, LED display, economy mode, silent, odorless, PVC tank, easy to install, plastic interior probes



**Mechanical**

- 15 ft pool, 5kW  
5 200 gallons, 17 060 BTU/hour  
# VALC55KW
- 18 to 21 ft pool, 10kW  
7 600-10 400 gallons, 34 120 BTU/hour  
# VALC1010KW
- 24 to 27 ft pool, 15kW  
13 500-17 200 gallons, 51 180 BTU/hour  
# VALC1515KW



**Digital**

- 15 ft pool, 5kW  
5 200 gallons, 17 060 BTU/hour  
# VALC5KW240DIGIT
- 18 to 21 ft pool, 10kW  
7 600-10 400 gallons, 34 120 BTU/hour  
# VALC10KW240DIGIT



**PROPANE BBQ - ROGUE SE 525 SERIES**

Cooking surface 18 x 28.75 in



57 000 BTU max, 4 burners and 1 infrared side burner, black  
# NAPRXT525SIBPK1



57 000 BTU max, 4 burners and 1 infrared side burner, stainless steel  
# NAPRXT525SIBPSS1

**BBQ AU PROPANE - ROGUE SE 625 SERIES**

Cooking surface 18 x 34.75 in



69 000 BTU max, 5 burners and 1 infrared side burner, black  
# NAPRXT625SIBPK1



6 500 BTU max, 4 burners, 1 side burner and 1 rear infrared burner, stainless steel  
# NAPRSE525RSIBPSS1



**BBQ Cover**  
Rogue series 525  
# NAP61527



**BBQ Cover**  
Rogue series 625  
# NAP61627

## 200A Electric Entrance Kit with Mast

# LUMKITENTRE200MATONT



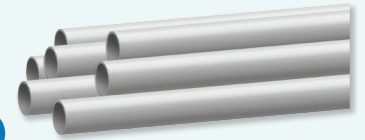
**1x** **SIEMENS**  
Service Entrance  
Loadcentre  
40/80 circuits, 1 phase,  
3 wires, 240V, 200A  
# SEQ40200



**2x** **ABB**  
Steel Locknut for  
Conduit Fitting  
# BL200



**1x** **Iberville®**  
Duct Seal  
Compound  
# DUCT1



**1x**  
SCEPTER™ Rigid PVC Conduit  
10 ft x 2 in  
# PVC2



**2x** **PVC Terminal  
Adapter**  
# TA35



**1x** **LB Type PVC  
Access Fitting**  
# SLB60S



**1x** **90° PVC  
Elbow**  
# EE3590

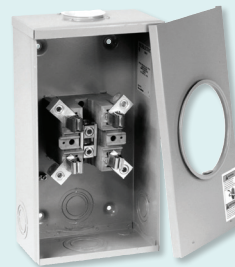
### MICROLECTRIC



**1x** **200MH  
Mast Kit**  
# LUM2MH



**1x** **Entrance Mast**  
2-1/2 in x 12 ft  
# MM12



**1x** **4 Jaw  
Meter Socket**  
# BS2TCV

## 200A Electric Entrance Kit with PVC Accessories

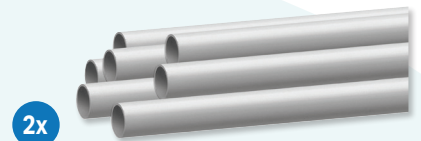
# LUMKITENTRE200PVCONT



**1x** **SIEMENS**  
Service Entrance  
Loadcentre  
40/80 circuits, 1 phase,  
3 wires, 240V, 200A  
# SEQ40200



**1x** **MICROLECTRIC**  
4 Jaw  
Meter Socket  
# BS2TCV



**2x**  
SCEPTER™ Rigid PVC Conduit  
10 ft x 2 in  
# PVC2



**2x** **PVC Terminal  
Adapter**  
# TA35



**1x** **LB Type PVC  
Access Fitting**  
# SLB60S



**1x** **90° PVC  
Elbow**  
# EE3590



**1x** **2" PVC Service  
Entry Fitting**  
# EF35

### ABB

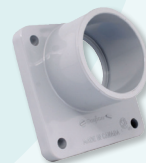


**2x** **ABB**  
Steel Locknut for  
Conduit Fitting  
# BL200

### Iberville®



**1x** **Iberville®**  
Duct Seal  
Compound  
# DUCT1



**1x** **2" PVC Meter Hub**  
# MHU35

Install the **DCC-9-BOX3** or **DCC-9-BOX6**

- ✓ Simplify large-scale installations
- ✓ Save space
- ✓ Allow for a neat and tidy cable installation
- ✓ Allow for a more ergonomic installation for the electrician
- ✓ 100% Future Proof
- ✓ Minimum initial investment

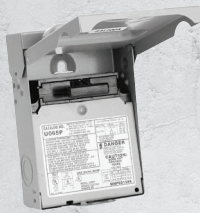


— rve

**GET BUILDINGS  
EV READY WITH US**



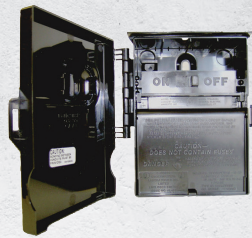
**Disconnect Switch**  
60A, 120 / 240V, 1PH, NEMA 3R



Non-fusible "pull-out"  
disconnect, metallic  
# MIDU065P



Metallic  
# MIDU065NA1



Plastic  
# MIDP065NA1



**RAB**  
DESIGN

**Charging Station  
Pedestal for Flo Home  
G5 and X5, Core + and  
Core + Max**

*Aluminum post and base plate,  
ideal for commercial and residential  
applications, black finish.*

# RABEVP5SBKFLOSL



**flo**

**FLO Home™**  
240V | 30A | 7,2 kW

**Level 2 charging station  
at home**

- Certified to operate at temperatures ranging from -40 °C to 50 °C
- CSA-certified. Meet applicable UL safety standards
- NEMA 4X aluminum casing
- Integrated safety features
- 25-foot industrial grade cable

flo.com

- Heavy-duty aluminum casing
- Safe
- Made in Canada
- Certified
- 3-Year Limited Warranty



## SLIM 24 Hyper Heat

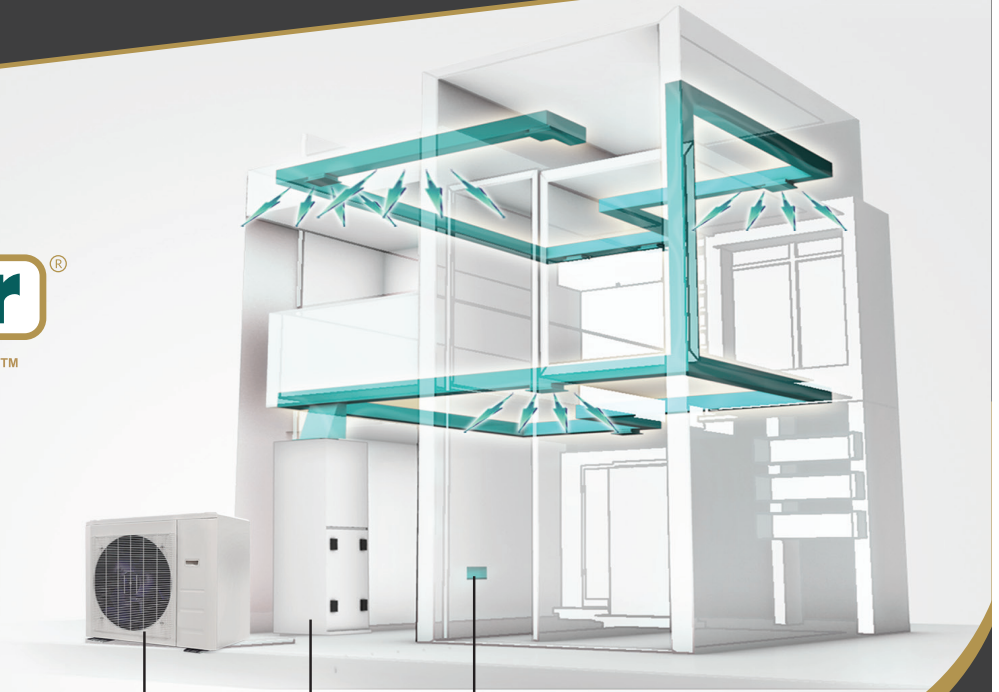
### Heat Pump Central System



Up to

**20** SEER //

**12** HSPF //



Slim Outdoor Unit

Air Handler

Any Thermostat



- Up to 20 SEER AHRI, NEEP and UL Rated
- 35% energy savings achieved by advanced inverter technology
- Slim design side-discharge condenser for smaller foot print
- Low ambient operation temperature at 5°F
- Can be matched with most brands air handler and A coil
- 24V control allows compatibility with most third party branded thermostats
- Electrical Heating belt for compressor
- Gold-Fin condenser protection
- Self-diagnostic
- Outdoor sound level as low as 56 dBA
- Multi-positional flexibility for air handler
- Static pressure will adjust automatically
- Dedicated wiring port for UV Light and humidifier (neither included)



www.convectaircanada.com • 1 800 463-7043

# °STELPRO



**HIGH-END CONVECTOR - SOR**

**Without thermostat**

500 W ..... STESOR0502WCW  
 1000 W ..... STESOR1002WCW  
 1500 W ..... STESOR1502WCW  
 2000 W ..... STESOR2002WCW



**CONVECTOR - MIR**

**Without thermostat**

500 W ..... STEMIR0502WCW  
 1000 W ..... STEMIR1002WCW  
 1500 W ..... STEMIR1502WCW  
 2000 W ..... STEMIR2002WCW



**CONVECTOR - SHC**

**Without thermostat**

500 W ..... STESHC0502WCW  
 1000 W ..... STESHC1002WCW  
 1500 W ..... STESHC1502WCW  
 2000 W ..... STESHC2002WCW



**THERMOSTATS - ST**

**Non-programmables**

2500 W ..... STEST252NP (FF)  
 3000 W ..... STEST302NP  
 4000 W ..... STEST402NP (FF)

**Programmables**

3000 W ..... STEST302P  
 4000 W ..... STEST402P (FF)



STELPRO.COM 1-844-STELPRO



Platinum member



**CERTIFIED EXPERTISE**  
 Get customized training



**FLEX\$**  
 Get access to a marketing fund to promote your floor heating expertise



**LIFETIME WARRANTY**  
 Enjoy the exclusive right to offer a lifetime warranty to your clients on the FLEXTHERM cables and mats you install



**WEB VISIBILITY**  
 Get referrals through our website to direct customers to you

*Proudly Canadian*

**JOIN OUR FLEXPART NETWORK**  
[flextherm.com/en/partner-zone/](http://flextherm.com/en/partner-zone/)

BECOME A



**CERTIFIED FLEXTHERM FLOOR HEATING INSTALLER**



**Autonomous camera**



**LTE Cellular Outdoor Security Photo Camera**

Solar powered, motion activated, 90 ft range. Includes: mounting arm, 16GB SD & SIM cards.

# VOSV150

**Night vision**



**LTE Cellular Outdoor Security Video Camera**

Live broadcast, solar powered, video and real time on the app, motion detection up to 100 ft, AI image recognition. Includes: 16GB SD card and SIM card, lithium battery pack and adjustable stand.

# VOSV300



**Universal Solar Charger**

External solar panel, 15 000 mAh battery, IP66 protection, 360° rotatable and tiltable mounting arm.

# VOSVPWRB



**V150 / V300 Security Box**

Heavy duty steel case for V150 and V300 security cameras, hole to insert padlock and to anchor to any surface.

# VOSVSBOX2



**Cable Lock**

6 ft - for camera or security box, two keys included.

# VOSVCBLOCK



**Long Range Cellular Antenna**

Improved signal performance, 15 ft cable, bracket for easy installation, compatible with all VOSKER cameras.

# VOSVANT01

**SPC90 600V POWER & CONTROL**

**INDUSTRIAL LED LIGHTING CABLE**

Brings Power, Control and Signal under one armour. Designed for fluorescent dimming controls, LED lighting and other Smart Building Applications.

- Two configurations of power and control in the same cable
- 12/2 Power & 16/2 Control
- 14/2 Power & 16/2 Control
- Designed as per CSA certification



# CAB12/2-16/2AC90150  
# CAB14/2-16/2AC90150

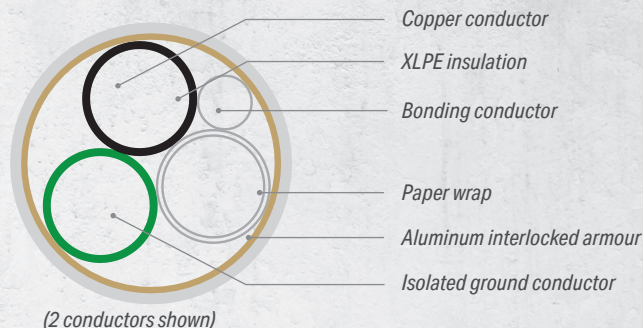


# CAB12/2AC90ISO150  
# CAB12/3AC90ISO150

**AC90 ISO GROUND GLO WRAP™**

**COPPER CONDUCTOR**

- Two conductors #12 AWG, #10 AWG / 600V
- Isolated ground
- XLPE / aluminum armoured





LIMITED QUANTITY

Outdoor Home Set Tool Kit
Includes: M18 FUEL QUIK-LOK power head string trimmer head and XC8.0 battery, M18 FUEL blower (tool only), M18 and M12 rapid charger.
# MILKIT282521ST2724BAT

LIMITED QUANTITY



M18 FUEL Self-Propelled Mower Kit
21 in - Mulch, bag or side discharge. Includes: 2x High Output™ HD12.0Ah battery packs and rapid charger.
# MIL282322HD

M18 FUEL QUIK-LOK ACCESSORIES



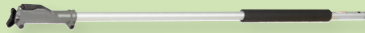
Articulating Hedge Trimmer Attachment
# MIL49162719



PACKOUT Tumbler
Keeps drink hot or cold all day, dishwasher safe.
20 oz # MIL48228392R
30 oz # MIL48228393R



M18 FUEL Chainsaw Kit
16 in - Faster cut speed in hardwoods vs 40CC gas engines. Reaches full throttle in under 1 second. Includes: M18 FUEL chainsaw (tool only), M18 Redlithium High Output HD12.0 battery pack, M18 & M12™ rapid charger and srench.
# MIL272721HD



3 ft Extension Attachment
# MIL49162721



Brush Cutter Attachment
# MIL49162738



M18 REDLITHIUM XC5.0 Batteries
2 pack, extended capacity.
# MIL48111852



M18 FUEL 2-Tool Combo Kit
Includes: 1/2 in hammer drill, impact wrench with 1/4 in HEX, multi-voltage charger M12 / M18, 2x XC5.0AH batteries and a carrying case.
# MIL369722



Collapsible Garbage
19 x 24 in
# RAC51000



ER-GO 50 Spool Carrying Handle
Ergonomic carrier specially designed for the manual transportation of wire spools (electric wiring, steel cable, chain, etc.). Maximum lifting capacity: 22.6 kg (50 lb).
# RAC56050



Electrician Tool Belt & Bag Combo
Includes: Molded Air-Channel Support Belt, 18 Pocket Electrician's tool pouch, 9 pocket fastener pouch, hammer holster and tape holder.
Medium (21 to 34 in) # RAC43242
Large (35 to 39 in) # RAC43243
X-Large (40 to 44 in) # RAC43244

FLUKE



### Voltage Detector

Voltbeat™ technology and continuous self-test. Upon detection, tip glows and beeper sounds. CAT IV, 1 000V.

# FLU1ACA1II



### T5-1000 Tester

Voltage, continuity and current tester. Excellent front-line troubleshooting and measurement tool, CAT III, 1 000V.

# FLUT51000



### RMS Clamp Meter

Combines general electrical measurements with temperature and capacitance to create one solid troubleshooting tool. CAT III 600V, CAT IV 300V.

# FLU324



### GFCI Outlet Tester

Plug it into the outlet. With bright LED and beeping, check wiring status or identify common wiring problems on standard and GFCI outlets.

# FLUST120+



### Insulation Resistance Tester

Measures AC/DC voltage from 0.1V to 600V and resistance from 0.01Ω to 20.00kΩ.

# FLU1507



### Industrial True RMS Multimeter

Measures up to 1 000V AC and DC. With built-in thermometer.

# FLU875

**KLEIN TOOLS**



### Cable Spicer's Knife

Special-purpose short blade with textured handle for comfort and firm grip.

# KLE44200



### Wire Pulling Foam Lubricant

19 oz - Stays where it is applied and wipes clean from hands and fabric. 4X greater yield than gel or wax lubricants. 30% more slippery than gel or wax lubricants.

# KLE51100



### Wire Stripper/Cutter

10-18 AWG solid, 6-1/4" length.

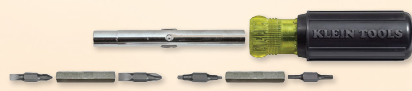
# KLE11045



### Side-Cutting Slim Pliers

9-3/8 in - Cuts ACSR, screws, nails and most hardened wire.

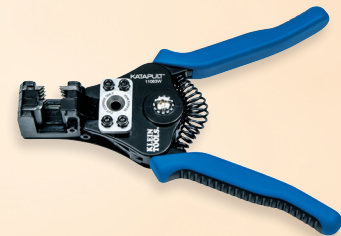
# KLED20009NE



### 11-in-1 Screwdriver / Nut Driver

Phillips, Slotted, Square, Torx Bits.

# KLE32500



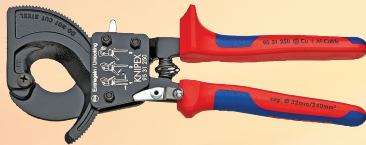
### Katapult® Wire Stripper / Cutter

Cuts and strips 8-22 AWG wire with ease.

# KLE11063W



**High Leverage Diagonal Cutter**  
8 in - 12° angled head offers clearance for gripping, cutting edge hardness approximately 64 HRC.  
# KNI7421200SBA



**Ratchet Cable Cutter**  
Black lacquered tool, handles with multi-component grips. Good for cutting copper and aluminium single conductors as well as multiple stranded cables. Little handforce required due to high transmission ratio.  
# KNI9531250SBA



**Hex-Plus L-Key Set**  
9 pieces, multicolour, ball-end hexagon tips, with durable plastic sleeve.



Metric  
# WER073593



Imperial  
# WER022640



**IMPORTANT !**  
Two reel jackstands are required to complete the installation.



**Reel Jackstand**  
Capacity 2 500 lb, maximum height 54", minimum height 22", maximum reel diameter 96", minimum reel diameter 46", for use with GLE647.  
# GRE683



**Compact Ratchet Cable Cutter**  
Cutting range: aluminum 750MCM, communication cables 1-1/8", copper 500MCM. Simple one-handed operation, compact for working in tight spaces.  
# GRE759



**Stylus Pro® Pen Light**  
White LED, 100LM, 950 candela, 62 m beam, 8h run time, 2 AAA alkaline batteries included, durable, anodized machined aircraft aluminium construction, removable pocket clip, unbreakable polycarbonate lens.  
# STR66118



**ENDURO® Pro Haz-Lo® Headlamp**  
Elastic headstrap, rubber hard hat strap, 3M® Dual Lock® fasteners included. **Three modes:** spot, flood and spot/flood combo for maximum brightness. Spot mode: 160LM, 73 m distance, 5h run time.  
# STR61424



**Dualie Laser**  
150LM, 3 AA alkaline lithium batteries included. The first intrinsically safe flashlight featuring a red laser pointer. Its focused spot beam illuminates your work area while the laser identifies and pinpoints objects at a distance. Yellow.  
# STR68760



**Zinc Plated HEX Nuts**  
3/8 in  
Pack of 100  
# VISHN3/8



**Toggle Bolt**  
3/16 x 3 in  
Pack of 50  
# VISTB3/16X3



**Hex Head Concrete Screws**  
3/16 x 1-1/4 in  
Box of 100  
# VIS72100



**Hex Head Concrete Screws**  
1/4 x 1-1/4 in  
Box of 100  
# VIS72240



### Half Facepiece Reusable Respirator

Offers reliable and convenient respiratory protection. Comes with sealable storage bag.

- Small # 3MS6100
- Medium # 3MS6200
- Large # 3MS6300



### P100 Filter

For welding, metal casting, and pharmaceutical products.

Pack of 2 # 3MS2091

For welding, concentration of harmful organic vapours.

Pack of 2 # 3MS2097



### P100 Particulate Filter Cartridge

NIOSH approved for environments containing certain oil and non-oil based particles. Can be used in a variety of applications including welding, brazing torch cutting, metal pouring, soldering, etc.

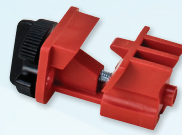
Pack of 2 # 3MS7093



### Snap-On Breaker Lockout

Quick and easy to install - just snap in place and apply lock. Designed for 120V breakers that have holes in the switch tongue.

# BRA65387



### Universal Multi-Pole Breaker Lockout

# BRA66321



### Clamp-On Breaker Lockout

Extremely versatile - works on a wide range of single-pole and internal-trip multi-pole breakers.

120/277V # BRA65396  
480/600V # BRA65397



### Hi-Viz Drop Shoulder Safety Tear-Away Vest

Tricot polyester interlock, CSA Z96-15, Class 2, level 2.

Small / Medium  
# PIOV1020951S/M

Large / X-Large  
# PIOV1020951L/XL

2X-Large / 3X-Large  
# PIOV10209512/3XL



### Delineator Post

44 in - Loop top  
Base sold separately

# PIOV62102500/S

### Delineator Base

11 lb (5 kg)

# PIOV62201700/S



### Orange Cotton Sweatband for Hard Hat

Innovative air-cushioned foam inner layer for maximum sweat absorption. Hook and loop for universal fit on most hard hats. Reusable and washable. Hat not included.

# PIOV2051370-O/S



### Ion Speed 1000 AA and AAA Battery Charger

Recharge 2 or 4 batteries at a time in 4-8 hours.  
Includes: 4x AA rechargeable batteries.

# DURCEF14DX4N

### Rechargeable Pre-Charged NiMH Batteries

Guaranteed to last for 10 years or 400 charges, and will hold a charge for up to 1 year when not in use. Compatible with any NiMH charger (not included).



AA - Pack of 4  
# DURDX1500B4N



AAA - Pack of 4  
# DURDX2400B4N

**Electrical Panel SPA Kit**  
120/240V - NEMA 3R

- 20A # SIEW0408ML112520
- 30A # SIEW0408ML112530
- 40A # SIEW0408ML112540
- 50A # SIEW0408ML112550
- 60A # SIEW0408ML112560



**EQL loadcentres**  
Single phase - main lug 120/240V



120/240V, 125A, NEMA 1,  
24 / 48 circuits, white  
# SIEEQL24125DW



120/240V, 125A, NEMA 1,  
16 / 32 circuits, gray  
# SIEEQL16125D



Download the Lumen app!



Place your orders directly  
online at [lumen.ca](http://lumen.ca) or via  
the Lumen app.



Two branches to better serve Ottawa and Eastern Ontario !

**OTTAWA EAST**

1000, Belfast Road, Ottawa (ON) K1G 4A2  
Tel. : 613 789-7500 / Fax : 613 789-7501  
Toll free : 1 855 589-7500

**OTTAWA WEST**

1050, Baxter Road, Ottawa (ON) K2C 3P1  
Tel. : 613 828-2930 / Fax : 613 828-2972  
Toll free : 1 888 491-2930



Prices are subject to change without notice. All images are for illustrative purposes only. Air Miles program is reserved to the Electrical Contractor ECAO or OEL members only. We are currently experiencing an exceptionally high demand for many popular products. As a result, some products advertised in this flyer may not be available. Please check your local branch for availability or visit [lumen.ca](http://lumen.ca). We are currently working on replenishing supplies as quickly as possible and apologize for any inconvenience this may cause.

