



A Sonepar Company

ONTARIO

Special deals
May-June
2022



Valid for Electrical Contractors
ECAO and OEL members only



Ty-Rap® 2022 Promo
Get your backpack today!

**It's a promotion.
It's a backpack cooler.
It's a seat.**

Two options are available:

THOTYBACKPACKMX

Weather and UV-resistant cable ties

- TY25MX — 1,000
- TY27MX — 1,000

THOTYBACKPACKM

Cable ties for indoor applications

- TY25M — 1,000
- TY27M — 500



SIEMENS EQL LOADCENTRES
Single phase - Main lug 120 / 240V



120/240V, 125A, NEMA 1, gray

16/32 circuits
SIEEQL16125D

24/48 circuits
SIEEQL24125D



120/240V, 125A, NEMA 1, white

24/48 circuits
SIEEQL24125DW



LED Projector

20W, 120V, 4 000K, 1 770LM,
photocell included, bronze.

Replaces 150W, PAR38 incandescent
LITOVFLLED2RH40K120PEDB



NEW!

LED Projector

In stock at all branches

120V, adjustable wattage (21W, 2 150LM / 26W, 2 600LM)
and CCT (3 000/4 000/5 000K), with motion sensor and
photocell, wall mount.

White # LITHGXLED2RHALOSWW120PIW
Bronze # LITHGXLED2RHALOSWW120PID



LED Striplight

In stock at all branches

120/277V, 4 000K, non-dimmable.

48 in - 4 500LM
Replaces 2 x 32W, T8
LITMNSLL482LLMVGZN40K

96 in - 8 200LM
Replaces 4 x 32W, T8
LITMNSLL962LLMVGZN40K



LED Wall Pack

In stock at all branches

120/277V, 4 000K, bronze finish

22W, 2 950LM, photocell included
Replaces 100W, MH
LITTWX1LEDP240KMVPEDDB

54W, adjustable output 1 450 to 6 950LM
Replaces 70W to 250W, MH
LITTWX2LEDALO40KMVDDB

108W, adjustable output 2 900 to 13 850LM
Replaces 100W to 400W, MH
LITTWX3LEDALO40KMVDDB



LED Full Cut Off Wall Pack

120/277V, 3 000K, bronze finish

24W, 2 900LM
Replaces up to 150W, MH
LITWPX1LEDP230KMVDDDBXD

47W, 6 000LM
Replaces up to 250W, MH
LITWPX2LED30KMVDDDBXD

69W, 9 200LM
Replaces up to 400W, MH
LITWPX3LED30KMVDDDBXD



High Bay LED Fixture

In stock at all branches

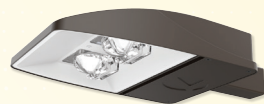
4 000K, dimmable 0/10V, 6 ft cord, hook,
glass lens, 120° beam, white housing.

Replaces up to 400W, HID or 6 fluorescents, T5HO
120/277V, 18 000LM
LITJEBL18L40K80CRIWH

347V, 18 000LM
LITJEBL18LHV40K80CRIWH

Replaces up to 400W, HID or 8 fluorescents, T5HO
120/277V, 24 000LM
LITJEBL24L40K80CRIWH

347V, 24 000LM
LITJEBL24LHV40K80CRIWH



Area Fixture

120/277V, 4 000K, adjustable output, type 3 distribution,
universal mounting bracket (round or square post 3-1/2"
minimum), bronze finish.

50W/8 000LM or 98W/14 000LM
Replaces up to 250W, HID
LITEXX1LEDP240KR3MVUPADB

146W/21 000LM or 190W/25 000LM
Replaces up to 400W, HID
LITEXX1LEDP440KR3MVUPADB

Juno



LED Recessed Fixture

In stock at all branches

120V, 5 CCT 2 700K to 5 000K, 670LM, white

4 in - 9W, 670LM
Replaces up to 65W, incandescent
JUNWF4SWW590CRIMW

6 in - 13W, 950LM
Replaces 75W, incandescent
JUNWF6SWW590CRIMW



LED Recessed Fixture

In stock at all branches

120V, 5 CCT 2 700 to 5 000K, dimmable, regressed
lens and deflector designed to reduce glare, white.

4 in - 9W, 670LM
Replaces 65W, incandescent
JUNWF4REGSWW590CRMW

6 in - 13W, 950LM
Replaces 75W, incandescent
JUNWF6REGSWW590CRMW



SUNNATA SERIES

NEW!



Dimmer

White, rated load 150W (LED),
600W (incandescent/halogen).
Wallplate not included.

LUTSTCL153MHWHC

NEW!



Dimmer Pro

White, rated load 250W (LED),
500W (incandescent/halogen), 400VA (MLV),
500W (ELV). Wallplate not included.

LUTSTPRONWH

Caseta Wireless

Caseta Wireless Outdoor Smart Plug

120V, 15A (lighting load) or 1/2HP
(motor and pump load), IP65 certified
rating, perfect for controlling outdoor
lighting or pump motor from your
phone or Caseta wireless control (Pico).

LUTPD150UTBL





LED Wraparound Surface Fixture

In stock at all branches
 120/277V, 4 000K, frosted polycarbonate lens.
2 ft - 27W, 2878LM, **replaces 1 x 32W, T8**
 Interconnectable up to 15 units
 # STAL2WMG241
4 ft - 47W, 5 043LM, **replaces 2 X 32W, T8**
 Interconnectable up to 8 units
 # STAL2WMG481



LED Surface Fixture

4 ft - 3 500/4 000/5 000K, dimmable 0/10V,
IP66, NSF, NEMA 4X, polycarbonate lens,
 stainless steel clips, V hook included.
 42W, 120/277V, 5 450LM
 # STAVTL4LS3W3C
 67W, 120/277V, 8 560LM
 # STAVTL4LS4W3C



Suitable for wet locations

LED Ceiling Fixture

In stock at all branches
 120V, 5CCT (2 700/3 000/3 500/4 000/5 000K),
 dimmable, round.
4 in - 8W, 580LM
Replaces up to 60W, incandescent
 # STACLDK4R8WA5CWH
6 in - 15W, 1 000LM
Replaces up to 75W, incandescent
 # STACLDK6R15WA5CWH

NEW!

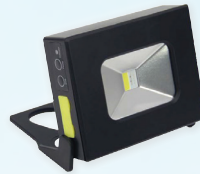
LED Projector

120/277V, 3 000/4 000/5 000K,
 cast aluminium housing, yoke mount,
 polycarbonate lens, bronze finish.



50/80/100/150W, 6 800 to 19 200LM
 # STAKITFLBMPS150MW3CBRETR

150/200/240/300W, 22 400 to 38 000LM
 # STAKITFLBXP300MW3CBRETR



Mini Portable LED Projector

10W, 100/240V, 450LM, 120° beam,
 lithium-ion 3.7V 2Ah battery working time is
 2 hours (100%) or 4 hours (energy saving
 mode), 2 intensity switch, flashing switch,
 magnetic handle, black housing.

STAMFLBTRYMGN10024010WCW



LED Panel for Suspended Ceiling

In stock at all branches
 120/347V, 3 500/4 000/5 000K,
 dimmable 0/10V.
2 x 2 - 20/30/40W
 # STAL3PNB2LPSQ3C
2 x 4 - 30/40/50W
 # STAL3PNB4LPSQ3C

LIGHTOLIER

by ©ignify



LED Recessed Fixture

In stock at all branches
3 in - 8W, 120V, 3 000K, 550LM, recessed,
 large beam, junction box included, white.
Replaces 50W, halogen
 # LIGMD3R069301FW

LIGHTOLIER

by ©ignify

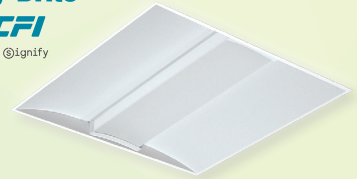


LED Recessed Fixture

In stock at all branches
3 in - 8W, 120V, 3 000K, 550LM, gimbal,
 narrow beam, junction box included.
Replaces 50W, halogen
 Matte white # LIGMG3R06930NF1W
 Matte black # LIGMG3R06930NF1B
 Brushed nickel # LIGMG3R06930NF1N

Day-Brite

CFI
 by ©ignify



LED T-Bar Fixture

120V / 227V, 4 000K, dimmable 0/10V,
 ribbed acrylic diffuser.
2 x 2 - 3 800LM
 # CFI2FGG38B8402DUNVDIM
2 x 4 - 4 200LM
 # CFI2FGG42B8404DUNVDIM

KEENE

by ©ignify



LED Projector

In stock at all branches
 120/277V, 4 000K, bronze finish
Knuckle or yoke mount
 10W, 1 100LM
Replaces 150W, quartz
 # KEETF10NWG1KFL8BZ
 30W, 3 250LM
Replaces 150W, HID
 # KEETF30NWG1KFL8BZ
 50W, 5 500LM
Replaces 150W, HID
 # KEETF50NWG1KFL8BZ

KEENE

by ©ignify



LED Wall Pack

40W, 120V, 4 000K, 4 973LM, gray, photocell
 included, wall mount, mounted to vertical surfaces
 or mounted onto 1-1/2" O.D. arms (not included).
Replaces up to 150W, HID
 # KEEDTD40NWG3AR5TLRPC1GY3

Day-Brite

CFI
 by ©ignify



LED High Bay Fixture

120/347V, **adjustable CCT (4 000/5 000K)**, open
 hook, 6 ft cord, dimmable 0/10V, polycarbonate lens.
 14 000LM
 # CFIHCY14L8CSTUN3DIM
 28 000LM
 # CFIHCY28L8CSTUN3DIM

DECORATIVE LIGHTING

Suitable for wet location



LED Ceiling Mount Fixture

13 in - 32W, 1 800LM, dimmable, brushed nickel ring, 5 adjustable CCT (2 700 to 5 000K), aluminum housing, frosted glass lens, 4 in octagon box mount (not included)

LUMLUCFG13CC

LED Ceiling Mount Fixture

120V, 3 000K, round, dimmable, white



5 in - 6W, 450LM
LUMLU203674A

7 in - 12W, 1 000LM
LUMLU203675A

9 in - 18W, 1 500LM
LUMLU203646A

12 in - 24W, 2 100LM
LUMLU203677A



LED Ceiling Mount Fixture

12 in - 20W, 120V, 1 458LM, 3 000K, round, dimmable, black rings

LUMLUCLDR12S220W30KRNDK

Suitable for damp locations



LED Wall Mount Fixture

2-3/4 x 6 in (H) - 1 x 10W, 800LM, 3 000K, dimmable, aluminum housing, clear glass lens, downlight lighting, black finish

LUMLUL325531BK

Suitable for damp locations



LED Wall Mount Fixture

4-1/2 x 4 x 16-13/16 in - 20W, 5CCT, 760LM, dimmable, fully sealed aluminum housing, frosted glass lens, central, uplight and downlight lighting

Black # LUMLULWJ16CCBK
White # LUMLULWJ16CCWH

Suitable for damp locations



LED Wall Mount Fixture

2-3/4 x 8 in (H) - 2 x 10W, 1 500LM, 3 000K, dimmable, aluminum housing, clear glass lens, uplight and downlight lighting, black finish

LUMLUL325532BK

LANDSCAPE LIGHTING



LED Path Light Fixture

Round head - 93° beam

20 in tall - 8W, 360LM, 12VAC, 3 000K, aluminum construction, ground stake included, frosted lens, black finish.

LUMLULPP203KBK



LED Path Light Fixture

Lantern head - 147° beam

26 in tall - 13W, 800LM, 12VAC, 3 000K, aluminum construction, ground stake included, frosted lens, black finish.

LUMLULPL263KBK



LED Path Light Fixture

Rectangular - 109° beam

12VAC, 3 000K, aluminum construction, ground stake included, frosted lens, black finish.

20 in tall - 12W, 600LM

LUMLULRB203KBK

26 in tall - 13W, 700LM

LUMLULRB303KBK



Low Voltage Cable

50 ft - caliber 14

LUMLULCBL5014

50 ft - caliber 16

LUMLULCBL5016

100 ft - caliber 12

LUMLULCBL10012

100 ft - caliber 14

LUMLULCBL10014

100 ft - caliber 16

LUMLULCBL10016

200 ft - caliber 12

LUMLULCBL20012



LED Projector

12VAC, 5CCT, 180° directional, 95° beam, frosted lens, aluminum housing, ground stake included, black finish

3 in diameter - 10W, 500LM

LUMLULSP3CCBK

4 in diameter - 20W, 1 000LM

LUMLULSP4CCBK



Transformer

60W, 120V to 12VAC, with timer, photocell, pluggable, plastic housing, black finish.

LUMLULTRP60BK



Transformer

300W, 120V to 12/13/14/15VAC, with timer, photocell, metal housing, black finish.

LUMLULTR300BK



Twist Locks

UL / CSA



Transparent Cover
2-3/4" deep,
horizontal/vertical.
HUBMM420CCN



Expandable Cover
1G, horizontal/vertical, extra duty.
Gray # HUBML500GCN
White # HUBML500WCN
Bronze # HUBML500ZCN

	125V	250V	347V AC	600V AC
20A 2P, 3 wires	 NEMA L5-20P 1 HP	 NEMA L6-20P 2 HP	 NEMA L24-20P	 NEMA L9-20P
	# HUBHBL2310	# HUBHBL2320	# HUBHBL3720	# HUBHBL2350
	# HUBHBL2311	# HUBHBL2321	# HUBHBL3721	# HUBHBL2351
	# HUBHBL2313	# HUBHBL2323	# HUBHBL3723	# HUBHBL2353



Lamp and brackets for garage pits



FE Series Hinged Brackets
APPFEHBA



FV Series Mounting Bracket
Stainless steel
APPFVSM



LED Lamp
4 ft - 120/277V, 5650K 7800LM, clear polycarbonate lens. Certified NEC and CEC
APPLLEDA17LU2



Wire Pulling Lubricant
3.78L (1 gallon) bucket, yellow 77
IDE31351



Noalox® Anti-Oxydant
8 oz. squeeze bottle
IDE30030



Water Heater for Above Ground Pool

- LED display
- Economy mode
- Silent
- Odorless
- PVC tank
- Easy to install
- Plastic interior probes

Mechanical

- 15 ft pool, 5kW, 240V
5200 gallons, 17060 BTU/hour
VALC55KW
- 18 to 21 ft pool, 10kW, 240V
7600-10400 gallons, 34120 BTU/hour
VALC1010KW
- 24 to 27 ft pool, 15kW, 240V
13500-17200 gallons, 51180 BTU/hour
VALC1515KW



Digital

- 15 ft pool, 5kW 240V,
5200 gallons, 17060 BTU/hour
VALC5KW240DIGIT
- 18 to 21 ft pool, 10kW, 240V
7600-10400 gallons, 34120 BTU/hour
VALC10KW240DIGIT





Receptacle - 250V

Receptacle 125 / 250V



Surface mount
50A, 2P, 3 wire,
NEMA 6-50R
LEV5378P



Surface mount
30A, 2P, 3 wire,
NEMA 6-30R
LEV5376P



Flush mount
30A, 2P, 3 wire,
NEMA 6-30R
LEV5372S00



Flush mount
50A, 2P, 3W,
NEMA 6-50R
LEV5374S00



For oven
50A, 3P, 4 wire, flush mount with
integrated mounting plate, white.
5.5 x 5.43 in
LEV1279S50



For dryer
30A, 3P, 4 wire, flush mount with
integrated mounting plate, white.
5.5 x 5.43 in
LEV1278S30

dyson airblade V

Touch-free. HEPA-purified.
Fast. Hygienic.

Certified hygienic by NSF international.
Tested and proven in washrooms worldwide.



DYSHU02ARGENT
DYSHU02ARGENT208V
DYSHU02BLANC



Propane Grill
Stainless steel - 88,500 BTU max, 57,000 BTU max,
5 burners + 1 side infrared, cooking surface 18 x 28.75 in
NAPRSE625RSIBPSS1

ROGUE SE 625 SERIES



Propane Grill
Black - 69,000 BTU max, 5 burners + 1 infrared
side burner, cooking surface 18 x 34.75 in
NAPRXT625SIBPK1



Grill Cover
Rogue series 625
NAP61627

ROGUE SE 525 SERIES

LIMITED QUANTITY



Propane Grill
57,000 BTU max,
4 burners + 1 side infrared,
cooking surface 18 x 28.75 in
Black
NAPRXT525SIBPK1
Stainless steel
NAPRXT525SIBPSS1

LIMITED QUANTITY



Propane Gas Grill
Stainless steel - 76,500 BTU max, 4 rear burners
+ 1 infrared side burner, cooking area: 18 x 28.75 in.
NAPRSE525RSIBPSS1

LIMITED QUANTITY



Grill Cover
Rogue series 525
NAP61527



CoRe+ Max™

240 V | 80A | 19,2 kW



Fastest* commercial level 2 charger, designed to last.

- Operational in temperatures ranging from -40°C to +50°C
- Flexible 7.62 m (25') cable that remains malleable in the winter
- Integrated Power Management technology

Now available at



*As permitted under the SAE J1772.

Heavy-duty | Safe | Made in Canada | 1-Year Limited Warranty

Electric Vehicle Energy Management System

Ask your branch representative for more information about the DCC product line and its availability.



DCC-11

Allows the connection of a charging station to a fully loaded electrical panel with a main power supply of more than 125A (150A or 200A).



DCC-9

If your main power supply is of 125A or under, get the DCC-9 instead.



3 New Ductless Heat Pumps

Capella 16
Single Zone



Capella 28
Single Zone



Capella MZ
Multizone



Performance up to



Up to

16.8 SEER

9.7 HSPF

Performance up to



Up to

28.1 SEER

13 HSPF

Performance up to

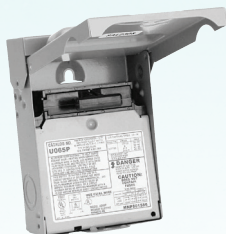


Up to

22.5 SEER

11.3 HSPF

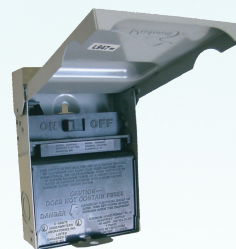
Contact a Convectair representative for more details. 1 800 463-7043 • www.convectaircanada.com



**Non-Fusible "Pull-Out"
Disconnect**

60A, 120/240V, 1PH, NEMA 3R, metallic

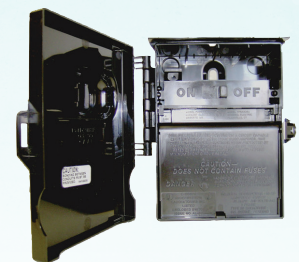
MIDU065P



**Non-Automatic
Disconnect Switch**

60A, 120/240V, 1PH, NEMA 3R, metallic

MIDU065NA1



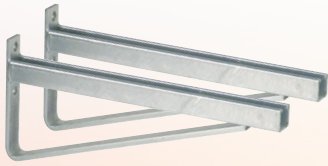
**Non-Automatic
Disconnect Switch**

60A, 120/240V, 1PH, NEMA 3R

MIDP065NA1

Products necessary to install a heat pump

ABB



Support Racks for Outdoor Unit

Aluminum, 26-1/2 x 3-1/4 in, pack of 2

SUPKITS24926AL



Ty-Rap™ Cable Tie

0.19 (W) x 7.31 (L) in Polyamide (nylon 6.6), recommended for outdoor use. Pack of 100

THOTY525MX



Expansion Shield Anchor

3/8 X 2-1/2 in, pack of 50

VISLSH3/8XLONG



Wall Anchor

1-1/4 in, 20 lb capacity, pack of 100

POW02371

SIEMENS

PANELS & BREAKERS KIT

SIEKITSEQ40150



SEQ Panels

240V, main breaker 150A, 40 circuits

SIESEQ40150

Breakers



SIEQA115AFCCSA



SIEQ115



SIEQ215



SIEQ220

Kit includes

- 2X SIESEQ40150
- 24X SIEQ115
- 6X SIEQ215
- 6X SIEQ220
- 10X SIEQA115AFCCSA

SIEKITSEQ40150



Power Outlets - NEMA 3R

Perfect outdoor connection solution for electric vehicle charging stations.



30A, 120V, receptacle R32U
MIDU013



50A, 120/240V, receptacle 14-50R
MIDU054



50A, 240V, receptacle 6-50R
MIDU501





THE HEATED FLOORS **SPECIALIST**

With the purchase of a FLEXTHERM heating cable and thermostat

RECEIVE A FREE
UNCOUPLING MEMBRANE.*

FLEKITHGS240L....

Proudly Canadian

* Includes one HGS cable, one FLK50 thermostat and the sq. ft. amount of uncoupling membrane required to cover the cable covering.

1-800-353-9843 | client@flextherm.com

°STELPRO

BRAVA BLACK



ELECTRIC BASEBOARD

- ROUNDED CORNERS
- QUICK AND EASY INSTALLATION
- ONE-PIECE CONSTRUCTION

BRAVA



Black

500WSTEB0502BK
750WSTEB0752BK
1 000WSTEB1002BK
1 250WSTEB1252BK
1 500WSTEB1502BK

White

300WSTEB0302W
500WSTEB0502W
750WSTEB0752W
1 000WSTEB1002W
1 250WSTEB1252W
1 500WSTEB1502W
1 750WSTEB1752W
2 000WSTEB2002W
2 250WSTEB2252W
2 500 WSTEB2502W



WALL FAN HEATER

500W STERWF0502W
750W STERWF0752W
1 000W STERWF1002W
1 250W STERWF1252W
1 500W STERWF1502W
2 000W STERWF2002W

Surface adapter STERWFT1W
Built-in thermostat STERWFSAW

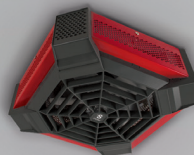


MECHANICAL THERMOSTAT LINE VOLTAGE SINGLE POLE

240V, 1P, 22A

White
STESWT1C
STERJ32W1

SPIDER



CEILING FAN HEATER

Red
4 000W STESGH4002R



1-844-STELPRO | WWW.STELPRO.COM



Platinum member



FIRE ALARM CABLES

In stock at Lumen



APPLICATIONS

Fire alarm cables are for use with fire monitoring/detection, power-limited fire alarm systems, smoke detectors, signaling, audio circuits, control circuits, fire protective circuits and security systems.



Non armoured unshielded cable - 300m
CAB18/3FAFT4300

Non armoured shielded cable - 300m
CAB18/3FASHFT4300

Armoured unshielded cable - 300m
CAB18/3FAFT4AARED300

Armoured shielded cable - 300m
CAB18/3FASHFT4AARED300

Also Available in the following gauges 12AWG, 14AWG and 16AWG and calibers 2c to 6c



Telephone / Video Wall Jack

Type-F, wiring type: 625D, wallplate included

LEV80781W



Standard Telephone Wall Jack

6P4C, wiring type: 625B4, wallplate included, screw terminals

LEV40249W



Standard Telephone / Video Wall Jack

6P6C x F, wiring type: 625D, screw terminals. Wallplate included.

LEV40258W



1G Module Frame

2 ports
LEV41642W

3 ports
LEV41643W

4 ports
LEV41644W



1G Faceplate

1 port
LEV410801WP

3 ports
LEV410803WP

4 ports
LEV410804WP

6 ports
LEV410806WP



Surface Mount Box

1 port
LEV410891WP

2 ports
LEV410892WP



Blank Module Connector

Pack of 10

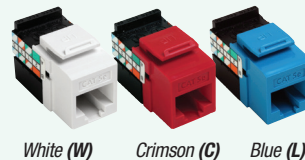
LEV41084BW



F-Type Module

LEV41084FWF

Jack Modules



White (W) Crimson (C) Blue (L)

- Almond (T)
- Ivory (I)
- Yellow (Y)
- Orange (O)
- Gray (G)
- Black (E)
- Dark red (R)
- Purple (P)
- Green (V)
- Brown (B)

CAT 5
LEV41108R*5

CAT 5E
LEV5G108R*5

CAT 5E+
LEV5G110R*5

CAT 6
LEV61110R*6

* Replace the asterisk by the color code letter



► **BUY A VACUUM**
M18 FUEL™ Wet/ Dry - 6 Gallons

- M18™ REDLITHIUM™ HIGH OUTPUT™ XC8.0 battery (charger not included)
- Motor head
- 6 gallon tank
- Cart
- High efficiency filter
- Flexible hose 1-7/8" x 9'
- Crevice tool 1-7/8"
- Floor utility nozzle 1-7/8"
- 2 x extension wands 1-7/8"

Many models and accessories available online.

MILKIT091021



► **VACUUM ACCESSORIES**



AIR-TIP™ Conduit Line Puller Kit

Designed for electricians to seal multiple conduit sizes for strong line-pulling suction.

MIL49902024

► **AND GET A FREE**
Storage Bag for Vacuum Accessories

Top storage area for longer vacuum accessories and enclosed zipper area for smaller pieces. Bottom storage includes adjustable velcro inserts that can be moved to fit a variety of accessories and customize storage needs.



► **SPECIAL PRICE**



M18™ REDLITHIUM™ XC5.0 Batteries

Two pack, extended capacity.

MIL48111852



Aluminum Hand Bender

For 1/2" EMT
 # GRE840AH

1/2" rigid conduit or 3/4" EMT
 # GRE841AH



Non-Contact Voltage Detector

50V to 1 000V AC. Bright flashlight for use in dark work areas.

GREGT13

IMPORTANT !
 Two reel jackstands are required to complete the installation.



Reel Jackstand

Capacity 2 500 lb, maximum height 54", minimum height 22", maximum reel diameter 96", minimum reel diameter 46", for use with GLE647.

Each # GRE683



Slug-Buster® Knockout Kit

1" ratchet wrench allows use with both 3/8" and 3/4" draw studs. 1/2" to 2" conduit.

GRE7238SB



Ultra Cutter Kit

Last 10 times longer than standard hole saws. Includes: 7/8 in to 2-1/2 in cutters.

GRE930



Carbide Cutter Set

7 pieces. Cuts stainless steel quickly and easily with "Quick-change" technology. Includes: 7/8", 1-1/8", 1-3/8", 1-3/4" and 2".

GRE660



Portable Wireless Jobsite Speaker

Connects wirelessly via Bluetooth or with wired 1/8" stereo auxiliary cable (included).

KLEAEPJS1



Keystone Demolition Driver

KLE6027DD



Tradesman Pro™ Electrician Backpack

KLE55421BP14



Self-Leveling Cross-Line Laser Level

With plumb spot. Integrated magnetic 360° mounting bracket with 1/4" and 5/8" tripod mounting threads. IP54: water and dust resistant. Hard plastic carrying case included.

KLE93LCLS



Digital Circuit Breaker Finder

With GFCI outlet tester. CAT II 120V safety rating. Includes: transmitter, receiver and 9V battery.

KLEET310

BUY A SCREWDRIVER SET

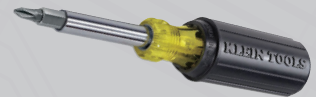
5 pieces - Flat/Phillips (85075)



5 screwdrivers: 5/16", 1/4", 3/16", 1/4" droit (6.4 mm à 7.9 mm) and #2 Phillips.

KLEKITTOURNEVIS

AND GET A FREE Multi-Bit 11-in-1 Screwdriver/Nutdriver (32500)*



Self-Drilling Screws (Tek 5)

12 x 1-1/2 - Hexagonal head

Jar of 100 # VIS44439



Metal Screws

10 x 1-1/4 - Pan square head (zinc), type A

Jar of 500 # VISPMS10X11/4POT500



Flat Socket Wood Screws

8 x 1-1/2 - Zinc

Jar of 600 # VISFWS8X11/2POT600



Kraftform Kompakt 26

Retractable bayonet blade. Intergrated magazine for bit storage. Tough viscous bits for universal use. Ergonomic Kraftform handle for low-fatigue working. Comes with pouch.

WER051025



Kraftform Kompakt 62

33 pieces. Pouch with 89 mm long bits. Kraftform bitholding screwdriver 816 R with Rapidaptor quick-release chuck.

WER059297

DURACELL®

1.5V Alkaline Procell® Intense Power Battery



- AA # DURPX1500
- AAA # DURPX2400
- D # DURPX1300
- C # DURPX1400
- 9V # DURPX1604

Specifically engineered to deliver precise pulses of energy while lasting longer in high-drain professional devices.

NEW PRODUCTS



Label Printer Kit

Automatic label formatting for wires, over 100 symbols for electricity and Datacom. Ability to create UPC, DataMatrix, and QR codes. Uses the same cartridges as BMP21PLUS. **Includes:** carrying case, lithium battery and charger.

BRAM210KIT



Compact Bluetooth Label Printer Kit

Prints from the Express Labels Bluetooth mobile app. Automatic label formatting for wires, over 14 000 symbols / 85 fonts / 22 bar code types (including QR). Uses the same cartridges as BMP21PLUS. **Includes:** carrying case, lithium battery (integrated), charger, charging power bank, belt clip and magnet. 2-year warranty.

BRAM211KIT



Indoor / Outdoor Vinyl Labels

Adheres to irregular, curved or rough surfaces. Resistant to chemicals, oils and detergents (black on white).

- 1/2 in
BRAM21500595WT
- 3/4 in
BRAM21750595WT



Nylon Cloth Label

Wire & cable wraps. Highly pliable to conform to tightly curved surfaces (black on white).

- 1/2 in
BRAM21500499
- 3/4 in
BRAM21750499



M210 Label Printer Only

BRAM210



M211 Label Printer Only

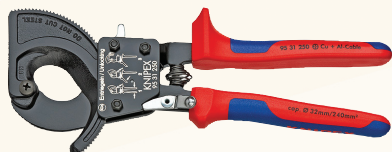
BRAM211



High Leverage Diagonal Cutter

8 in - 12° angled head offers clearance for gripping, cutting edge hardness approximately 64 HRC.

KNI7421200SBA



Ratchet Cable Cutter

Black lacquered tool, handles with multi-component grips. Good for cutting copper and aluminium single conductors as well as multiple stranded cables. Little handforce required due to high transmission ratio.

KNI9531250SBA



325 True RMS Clamp Meter

CAT IV 300V, CAT III 600V. Measures AC / DC current, voltage, temperature, frequency. Backlit, easy to read display.

FLU325



True-RMS AC / DC Clamp Meter

Clamp meter with iFlex transmits results via Fluke Connect Measurements app, stays safely away from the arc flash zone through Bluetooth connectivity to Apple and Android devices.

FLU376FC



Digital Multimeter
With non-contact voltage detection.

CAT III, 600V
FLU117EFSP



Electrical Tester

With integrated FieldSense technology, you can quickly and easily take measurements by sliding the open fork over a conductor to see the voltage level without the need for test leads.

FLUT6600



IC 15WB+ Fire Barrier Sealant

20 fl. oz (591 ml) - Provides up to 3 hours of fire protection in tested and listed systems.

TROIC15WB+20OZ



1000 NS Fire Barrier Water Tight Sealant

Light gray. Ready-to-use, single component, neutral cure, silicone sealants that cure upon exposure to atmospheric humidity to form a flexible firestop seal. Used primarily on vertical surfaces..

TRO1000NS10.1OZ



Linerless Rubber Splicing Tape

2 in x 30 ft - 30 mils, black.

TRO130C2X30



E-A-Rsoft™ Ear Plugs

Uncorded earplugs feature a bell shape and super soft. NRR 33dB. Box of 200

3MS3121261



Particulate Respirator N95

Adjustable nose clip reduces potential for eyewear fogging and helps ensure a better deal and fit. Two-strap design with welded dual point attachment, without valve. Box of 20

3MS8210



SecureFit™ Protective Eyewear

Anti-fog lens, protects against Ultraviolet (UV) radiation. Adjustable nose pads and soft-touch temple inlays provide increased comfort and improved grip. Black and green frame. CSA Z94.3 certified.

Gray lens # 3MSSF402AF

Clear lens # 3MSSF401AF

INDUSTRIAL SCIENTIFIC



DSXi Cloud-Connected Docking Station

Easily maintains the gas detectors that keep your people safe in hazardous environments. 3 gas inlet ports.

ISC18109327131

Ventis MX4 Gas Detector

LEL, O2, CO, H2S, lithium-ion battery, desktop charger.



Without pump

ISCVTSK1231100101



With pump

ISCVTSK1232110101



Traffic Cone

18 in - 3 lb, hi-viz orange colour with UV protection, black rubberized base, without reflective band

PIOV62004500/S



Hard Hat Sun Shade

Orange, one size fits all (hard hat not included).

PIOV2051450-O/S



NEW!

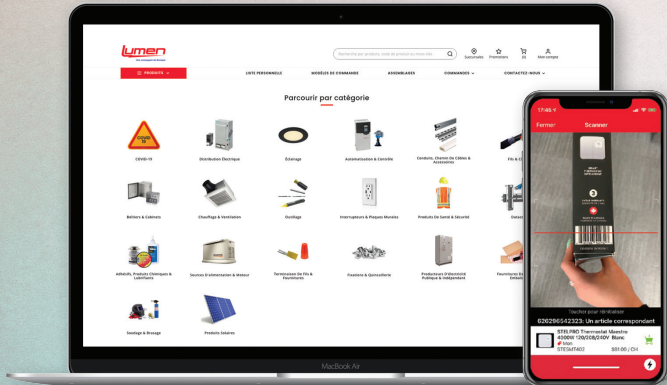
Professional Roofer's Kit

Includes: Grommeted leg harness, reusable roof bracket, 2 ft shock pack lanyard with integral adp rope grab, 50 ft vertical lifeline, and 15-litre waterproof pail.

PIOV8257065

ORDER ONLINE 24/7

WEB • ERP INTEGRATION • MOBILE



- Access your prices
- View real-time inventory
- Search products by category
- Download product spec sheets

Chat online and make an appointment with our e-Commerce experts.



PRIORITY PICK-UP FOR ORDERS ALREADY PLACED

Place your order in advance on lumen.ca or on the mobile app.



Two branches to better serve Ottawa and Eastern Ontario !

OTTAWA EAST

1000, Belfast Road, Ottawa (ON) K1G 4A2
Tel.: 613 789-7500 / **Fax:** 613 789-7501
Toll free: 1 855 589-7500

OTTAWA WEST

1050, Baxter Road, Ottawa (ON) K2C 3P1
Tel.: 613 828-2930 / **Fax:** 613 828-2972
Toll free: 1 888 491-2930



Prices are subject to change without notice. All images are for illustrative purposes only. Air Miles program is reserved to the Electrical Contractor ECAO or OEL members only. We are currently experiencing an exceptionally high demand for many popular products. As a result, some products advertised in this flyer may not be available. Please check your local branch for availability or visit lumen.ca. We are currently working on replenishing supplies as quickly as possible and apologize for any inconvenience this may cause.

