

# Lumen

A Sonepar Company


ATLANTIC

Special deals  
**July - August**  
2023



AIR MILES.

Valid for Electrical Contractors  
ESA and ECA members only

  
Earn  
**DOUBLE** \*  
**2X** AIR  
MILES

on all orders  
from July 1<sup>st</sup> to August 31<sup>st</sup>, 2023

Valid for all orders : picked up,  
delivered and projects.

\* Special offer for ESA and ECA members only.

BMO HAS COMPLETED THE ACQUISITION  
OF AIR MILES LOYALTY INC.'S AIR MILES  
REWARD PROGRAM BUSINESS.

See terms and conditions  
on [Lumen.ca](http://Lumen.ca)



## LEVITON



### Decora Switch

15A - 1P, 120V  
White  
# LEV5601P2W  
Black  
# LEV5601P2E  
15A - 3-Way, 120V  
White  
# LEV5603P2W  
Black  
# LEV5603P2E



### Duplex Receptacle

15A - 120V  
White  
# LEV5325W  
Black  
# LEV5325E



### Tamper Resistant Duplex Receptacle

15A - 120V  
White  
# LEVT5325W  
Black  
# LEVT5325E



### Tamper Resistant Duplex Receptacle

Dual type A USB port  
3.6A Total charge power, 18W  
15A - White  
# LEVT5632W  
15A - Black  
# LEVT5632E  
20A - White  
# LEVT5832W  
20A - Black  
# LEVT5832E



### Tamper Resistant Duplex Receptacle

Type A and type C USB ports  
5.1A Total charge power, 25W  
15A - White  
# LEVT5633W  
15A - Black  
# LEVT5633E  
20A - White  
# LEVT5833W  
20A - Black  
# LEVT5833E



### Tamper Resistant Duplex Receptacle

Type C USB ports  
6A total charge power, 30W  
15A - White  
# LEVT5635W  
15A - Black  
# LEVT5635E  
20A - White  
# LEVT5835W  
20A - Black  
# LEVT5835E



### LED Striplight

120 / 277V, 4 000K, frosted acrylic lens.

48 in - 4 000LM

# LITCSSL484000LMMV40K

96 in - 8 000LM

# LITCSSL968000LMMV40K



### LED Striplight

120V, 3 500K, interconnectable up to 18 units, coupler and 18 in cord included, 5 ft cord with plug, toggle switch, polycarbonate lens, white.

23 in - 9W, 940LM

# LITRLNKL2412035K80CRI

47 in - 20W, 1950LM

# LITRLNKL4812035K80CRI



### LED Surface Fixture

4 ft - 34W, 120 / 277V, 5 000LM, IP66, dimmable 0 / 10V, frosted polycarbonate lens, captive polycarbonate latches. Replaces 2 X 32W, T8

4 000K

# LITCSVTL485000LMMV4K80CR

5 000K

# LITCSVTL485000LMMV5K80CR



### LED Surface Fixture

120 / 277V, 4 000K, dimmable, white acrylic lens.

2 ft - 32W, 3 000LM, replaces 1 x 32W, T8

# LITFMLWL24840ZTMVOLT

4 ft - 48W, 4 600LM, replaces 2 x 32W, T8

# LITFMLWL48840ZTMVOLT



Suitable for damp location

### LED Surface Mount Ceiling Fixture

7 in - 12.2W, 120V, 636LM, 3 000K / 4 000K / 5 000K, dimmable, aluminium housing, acrylic lens, for storage room, hallway, office, residential and commercial use.

# LITFMLS7SWW2



### High Bay LED Fixture

120 / 347V, 4 000 / 5 000K, medium distribution, open hook with 7 ft galvanized safety cable, 6 ft cord, dimmable 0 / 10V, polycarbonate lens.

12 000 / 15 000 / 18 000LM

# LITCPBALO13UVOLTSWW9DWH

21 000 / 24 000 / 27 000LM

# LITCPBALO14UVOLTSWW9DWH



With specular reflector

### Fluorescent High Bay Fixture

120 / 277V, with 6 ft flexible cord (lamps not included).

13 - 1/4" wide - 4 x F54T5HO

# LITIBZT5454MVCS93W

18 - 1/8" wide - 6 x F54T5HO

# LITIBZT5654MVCS93W



### Recessed Fluorescent T-Bar Fixture

120V / 277V (lamps not included)

1 x 4 ft - 2 x F32T8

# LIT1GT2MV

2 x 4 ft - 4 x F32T8

# LITGT4MV



### Fluorescent Surface Fixture

120V / 277V (lamps not included)

4 ft - 2 x F54T5HO

# LITZ254T5HOMV

8 ft - Tandem - 4 x F54T5HO

# LITZ254T5HOMV

### Luna Series

120V, 2 700 / 3 000 / 3 500 / 4 000 / 5 000K



Suitable for wet location

### LED Recessed Fixture

Dimmable, 40° beam, white finish

5 or 6 in

17W, 1 150LM

# LITRA5617F90WHWH

20W, 1 435LM

# LITRA5620F90WHWH

33W, 2 330LM

# LITRA5633F90WHWH



Suitable for wet location

### LED Recessed Fixture

12W, adjustable gimbal, diffused mirror reflector

3-1/2 in

White # LITRA3512RG90WH

Black # LITRA3512RG90BK

4 in

White # LITRA412RG90WH

Black # LITRA412RG90BK

3 000 to 2 000K - Warm dim

3-1/2 in

White # LITRA3512RGDTW90WH

Black # LITRA3512RGDTW90BK

4 in

White # LITRA412RGDTW90WH

Black # LITRA412RGDTW90BK





Suitable for damp location

**LED Recessed Fixture**

4 in - 120V, 11W, 750LM, 3 000K, frosted polycarbonate lens, white.

# STALPDL4R11A30WHCHOICE



Suitable for wet location

**LED Recessed Gimbal Fixture**

4 in - 120V, 9W, 750LM, 3 000K, frosted polycarbonate lens, white.

# STASWDL4R9A30WHCHOICE



Suitable for wet location

**LED Surface Mount Ceiling Fixture**

7 in - 14W, 120V, 1 000LM, 4 000K, with motion detector (passive infrared), frosted polycarbonate lens, steel housing, non-dimmable, white.

Replaces 75W, incandescent

# STACLDKMS7R14WA40WH

**NEW!**



**Ceiling Mount Fixture**

120/347V, 40/60/70W, 6 000/7 600/9 000LM, 3 000/4 000/5 000K, frosted polycarbonate lens, bronze finish die cast aluminium housing.

# STAIFOPS70AQ3CBRP

**NEW!**



**Wall Pack**

120/277V, 72/96/120W, 9 485 to 15 680LM, 3 000/4 000/5 000K, polycarbonate lens, photocell, grey finish die cast aluminium housing.

# STAYLDPS120AW3CPT



**LED Compact Projector**

3 000/4 000/5 000K, 120/277V, tempered glass, bronze finish die cast aluminium housing.

15/25W, 2 100/3 500LM

Knuckle mount

# STAFLMPS25AW3CBRKN

Yoke mount

# STAFLMPS25AW3CBRYK

35/60W, 4 900/8 400LM, photocell (on/off)

Knuckle mount

# STAFLMPS60AW3CBRKNP

Yoke mount

# STAFLMPS60AW3CBRYKP

**NEW!**



**LED Surface Fixture**

4 ft - 120/277V, 4 000LM, 3 000/3 500/4 000K, wraparound lens et and occupancy sensor.

Replaces 2 X 32W, T8

# CFINWL440L8CSTUNVDIMOCC

**KEENE**

by @ignify



**LED Wall Pack**

13W, 120V, 1 200LM, 3 000K, photocell included, bronze finish, wall mount with galvanized mounting plate, frosted polycarbonate lens.

Replaces up to 70W, HID

# KEESWLWWG1PCB1BZ

**KEENE**

by @ignify



**LED Wall Pack**

12W, 120V, 1 100LM, 3 000K, photocell included, bronze finish, wall mount with galvanized mounting plate, frosted polycarbonate lens.

Replaces up to 70W, HID

# KEELWLWWG2PCB1BZ

**KEENE**

by @ignify



**LED Wall Pack**

120/347V, 3 000/4 000/5 000K, integrated selectable photocell, glass lens, die cast aluminium housing, bronze finish.

28/40/60W, 3 860 to 8 160LM

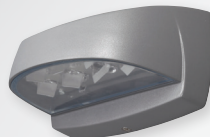
# KEEWP60SCTG210BZ

70/80/90/100W, 9 240 to 13 600LM

# KEEWP100SCTG210BZ

**KEENE**

by @ignify



**LED Wall Pack**

10W, 120/277V, 1 050LM, 4 000K

Replaces up to 50W, HID

Titanium finish

# KEELPW7G38DGY

Bronze finish

# KEELPW7G38BZ

**KEENE**

par @ignify



**LED Wall Pack**

20W, 120/277V, 2 277LM, 4 000K, bronze

Replaces 70W, HID

# KEETW20NWG18BZ

With photocell

# KEETW20NWG1PCB1BZ

## WINDOW AIR CONDITIONER

**MECHANICAL THERMOSTAT**  
CONGJC05BVA6NMNC4B1



**5000 BTU/HR**

Up to  
**150 sq. ft.**  
(14 sq. m)

**ELECTRONIC THERMOSTAT**  
CONGJC06BVA6NRNC5B1



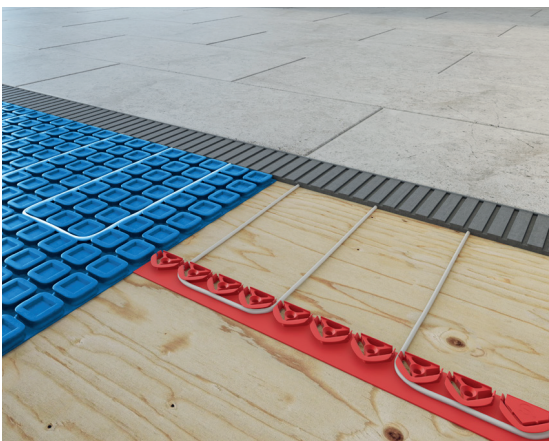
**6000 BTU/HR**

Up to  
**250 sq. ft.**  
(23 sq. m)

BETTER AIR QUALITY - 3-IN-1 • COMPACT AND ECONOMIC • CLASSIC DESIGN • DURABLE

www.convectaircanada.com • 1 800 463-7043

## °STELPRO



UNIVERSAL HEATING CABLE\*

STESCU2W0270S025	STESCU2W0475S042
STESCU2W0338S030	STESCU2W0540S047
STESCU2W0405S036	STESCU2W0675S058



HEATING CABLE ON LATTICE FOR CONCRETE\*

STESECM2W0300S025	STESECM2W0600S050
STESECM2W0400S033	STESECM2W0750S063
STESECM2W0500S042	STESECM2W0850S071

\*OTHER DIMENSIONS AVAILABLE



FLOOR HEATING THERMOSTAT

**Single Programming**  
STESTCNPW5

**Multiple Programming**  
STESTCPW5



1-844-STELPRO | WWW.STELPRO.COM







### F-Series Boxes - Single Gang



1/2 in  
# SCEFS10  
3/4 in  
# SCEFS15



1/2 in  
# SCEFSC10  
3/4 in  
# SCEFSC15

### Weatherproof Covers - Single Gang



Toggle switch cover  
# SCEVSC1510



Ground fault receptacle  
# SCEWGF1510



Duplex receptacle  
# SCEWDR1510

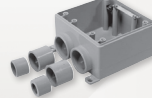
### F-Series Universal Boxes - Double Gang



1/2, 3/4 and 1 in  
# SCEFSU2101520



1/2, 3/4 and 1 in  
# SCEFSCU2101520



1/2, 3/4 and 1 in  
# SCEFSSU2101520

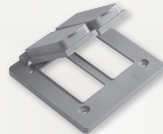
### Weatherproof Covers - Double Gang



Toggle switch cover  
# SCEVSCU202



Double door duplex cover  
# SCEVSDD202



Double door GFCI cover  
# SCEVSGG202



### SKYLARK SERIES



#### Dimmer

Compatible with : LED, incandescent, halogen, CFL, single and 3-way, white. Wallplate not included.

# LUTCTCL153PWH

### DIVA SERIES



#### Dimmer

Compatible with : LED, incandescent, halogen, CFL, single and 3-way, white. Wallplate not included.

# LUTDVCL153PHWHC

### MAESTRO SERIES



#### Dimmer

120V, 600W incandescent or halogen, 150W LED or CFL, single and 3-way, white. Wallplate not included.

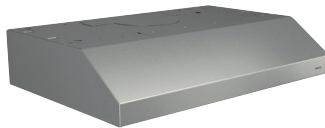
# LUTMACL153MHWHC



### Economical Range Hood

30 in - 160 CFM, 2 speeds, maximum sound level 5 sones.

White # BROBU230WH  
Black # BROBU230BL  
Stainless steel # BROBU230SS



### Glacier Range Hood

30 in - 250 CFM, superior smoke and odor capture, 1.5 sones, 2 speeds, 2 levels light, 2 fine mesh filters.

# BROBCS330SSC



### Glacier Range Hood

30 in - 300 Max Blower CFM, 3 speeds, 2 levels LED light, maximum sound level 5 sones.

White # BROBCDA130WW  
Black # BROBCDA130BL  
Stainless steel # BROBCDA130SS



### Compact Central Vacuum Unit

Disposable bag system / For 4 000 ft<sup>2</sup> house  
120V, 12A, 66dB, 500 Air Watt, 29-3/4" height

# BROBQ550



### Accessories Kit

Includes: 30 ft low voltage hose, 3 brushes, long crevice tool, telescopic wand and a mounting bracket.

# BROBAK1



# Collection MODbox™



## Internal Rail Accessory

Secures all rail attachments inside MODBox™ rolling toolbox and medium toolbox. Use handle side up or down depending on the clearance needed.

# KLE54818MB

## A Electrician's Backpack

32 pockets for maximum tool and gear storage and includes a spacious interior for large hand tools, steady molded front pocket helps protect items like phones and safety glasses, extra padding on the back extends over the hard bottom for carrying comfort.

# KLE62201MB

## B Tool Carrier Rail Attachment

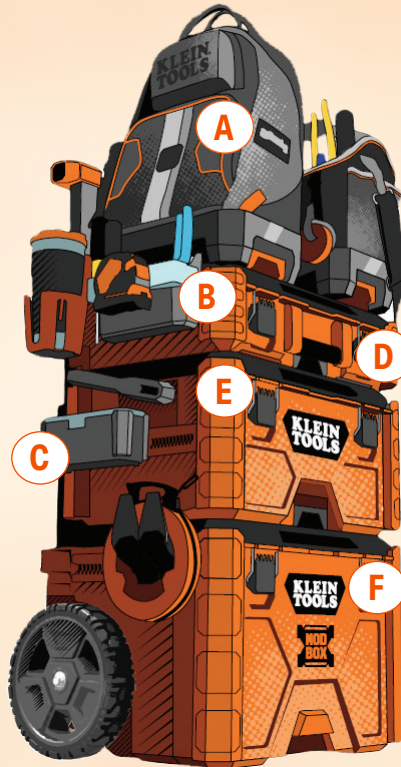
Secure your rail attachments inside the rolling and medium toolboxes. It keeps rail attachments securely in place and prevent shifting inside the toolbox when not in use on the outside rails.

# KLE54814MB

## C Parts Bin Rail Attachment

Connects to side rails to keep tool accessible on the worksite. The storage compartment comes with removable dividers for added modularity.

# KLE54815MB



## D Small Toolbox

22 x 15.5 x 6.6 in - Capacity 75 lb

# KLE54804MB

## E Medium Toolbox

22 x 15.5 x 11.7 in - Capacity 100 lb

# KLE54803MB

## F Rolling Toolbox

22.6 x 19.88 x 44 in - Capacity 250 lb

# KLE54802MB



## M12 Cable Stapler Kit

Coil-spring mechanism sinks the staples to the appropriate depth when fastening loomex NMD 90 (14/2, 14/3, 12/2, 12/3, 10/2, 10/3) and low voltage cables. Only compatible with our 1" insulated staples. Sink up to 1 200 staples on a fully charged M12 CP2.0ah battery. Includes: stapler 2448-20, battery M12 CP2.0 48-11-2420, battery charger 48-59-2401 and carrying bag.

Stapler kit  
# MIL244821

Tool only  
# MIL244820



## Insulated Cable Staples for Stapler 2448

1 in - CUL approved for loomex NMD 90 cable (14/2, 14/3, 12/2, 12/3, 10/2, 10/3) installation.

# MILMNM1600



## Step Drill Bit Set

#1, #4 and #9. Replaces GRE35884

# GREGSBSET3



## Carbide Cutter Set

1" ratchet wrench allows use with both 3/8" and 3/4" draw studs. 1/2" to 2" conduit.

# GRE660



## Nail Eater® Extreme

18" made of super tough, heat-treated steel, cuts through nails and provides longer life.

5/8 in # GRE66PT5/8  
3/4 in # GRE66PT3/4  
13/16 in # GRE66PT13/16  
7/8 in # GRE66PT7/8





**Label Printer Kit**

Automatic label formatting for wires, over 100 symbols for electricity and Datacom. Ability to create UPC, DataMatrix, and QR codes. Uses the same cartridges as BMP21PLUS. Includes: carrying case, lithium battery and charger. 2-year warranty.

# BRAM210KIT



**Compact Bluetooth Label Printer Kit**

Prints from the Express Labels Bluetooth mobile app. Automatic label formatting for wires, over 14 000 symbols / 85 fonts / 22 bar code types (including QR). Uses the same cartridges as BMP21PLUS. Includes: carrying case, lithium battery (integrated), charger, charging power bank, belt clip and magnet. 2-year warranty.

# BRAM211KIT



**M210 Label Printer Only**

# BRAM210



**M211 Label Printer Only**

# BRAM211



**Indoor / Outdoor Vinyl Labels**

Adheres to irregular, curved or rough surfaces. Resistant to chemicals, oils and detergents (black on white).

- 1/2 in # BRAM21500595WT
- 3/4 in # BRAM21750595WT



**Nylon Cloth Label**

Wire & cable wraps. Highly pliable to conform to tightly curved surfaces (black on white).

- 1/2 in # BRAM21500499
- 3/4 in # BRAM21750499



**Non-Contact VoltAlert™ Tester**

Detects from 90 to 1000 VAC, pocket size.

# FLU2AC/901000V



**Infrared Thermometer 62 MAX**

Large backlit display, supports heat, dust, water and a 3 m drop. Accuracy of +/- 1.5°C.

# FLU62MAX



**Laser Distance Meter**

Instantly measure up to 131 ft, with 1-button point-and-click. Quickly calculate area (ft<sup>2</sup> / m<sup>2</sup>).

# FLU417D



**Fire Barrier Moldable Putty Stix MP+**

Moldable through penetration firestop with excellent smoke-seal capability.

# TROMPS2



**Particulate Respirator N95**

Adjustable nose clip reduces potential for eyewear fogging and helps ensure a better deal and fit. Two-strap design with welded dual point attachment, without valve.

# 3MS8210



**SecureFit™ Protective Eyewear**

Anti-fog lens, protects against Ultraviolet (UV) radiation. Adjustable nose pads and soft-touch temple inlays provide increased comfort and improved grip. CSA Z94.3 certified

- Clear lens # 3MSSF401AF
- Grey lens # 3MSSF402AF

## THE ENERGY MANAGEMENT SYSTEM FOR EV



### DCC-9

- # RVEDCC930A
- # RVEDCC940A
- # RVEDCC950A
- # RVEDCC960A



### DCC-12

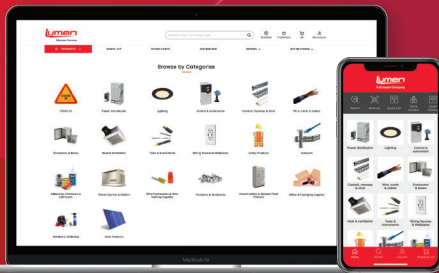
- # RVEDCC12

Applicable taxes not included.

**rve**

**GET BUILDINGS  
EV READY WITH US**

**ORDER ONLINE 24/7**  
WEB · ERP INTEGRATION · MOBILE



**PRIORITY PICK-UP  
FOR ORDERS ALREADY PLACED**

Place your order in advance on **lumen.ca**  
or on the **mobile app**.

Two branches to better serve Atlantic Canada!

#### DARTMOUTH

121, Ilsley Avenue, unit 119, Dartmouth (NS), B3B 1S4  
**Tel. : 902 468-7996 / Fax : 902 468-7997**  
**Toll free : 1 844 516-0158**

#### MONCTON

1070, St-George Blvd., unit 1A, Moncton (NB), E1E 4K7  
**Tel. : 506 382-1396 / Fax : 506 382-9376**  
**Toll free : 1 844 311-1396**

Prices are subject to change without notice. All images are for illustrative purposes only. Air Miles program is reserved to the Electrical Contractor ECAO or OEL members only. We are currently experiencing an exceptionally high demand for many popular products. As a result, some products advertised in this flyer may not be available. Please check your local branch for availability or visit [lumen.ca](http://lumen.ca). We are currently working on replenishing supplies as quickly as possible and apologize for any inconvenience this may cause.

