

# Lumen

A Sonepar Company

## ATLANTIC

Special deals  
**May - June**  
2023



AIR MILES.

Valid for Electrical Contractors  
ESA and ECA members only

**N**  
NOVOLED

### LED Lamps

MR16



**MR16 - 7W, 3 000K, 500LM**  
35° beam - Dimmable  
Replaces 50W, halogen  
# LAMLEDMR167W3KFL



GU10



**GU10 - 7W, 3 000K, 500LM**  
35° beam - Dimmable  
Replaces 50W, halogen  
# LAMLEDGU107W3KFL



PAR20



**PAR20 - 7W, 3 000K, 500LM**  
40° beam - Dimmable  
Replaces 50W, halogen  
# LAMLEDPAR207W3KFL



A19



**A19 - 9.8W, 2 700K, 800LM**  
Replaces 60W, incandescent

Non-dimmable  
# LAMLEDA199W27KND

Dimmable  
# LAMLEDA199W27KDIM



**nvent**  
HOFFMAN



**Splitter Trough**  
NEMA1

3 ft - 200A, 3 wires  
# HOFAST3223R

4 ft - 200A, 3 wires  
# HOFAST4223R

3 ft - 400A, 3 wires  
# HOFAST3403R

4 ft - 400A, 3 wires  
# HOFAST4403R

6 ft - 600A, 3 wires  
# HOFAST6603R

**ABB**

**Marrette® PRO-BLU™ 933™**

Cable ties with ergonomic wing design, caliber #22 to #8 AWG, blue.



Jar of 200  
# MAR933JAR200



Jar of 400  
# MAR933JAR400



Jar of 1000  
# MAR933JAR1000



Pack of 10 000  
# MAR933BK



Baril of 25 000  
# MAR933BAR



### LED Panel for T-Bar Ceiling

120 / 347V, 3 500 / 4 000 / 5 000K, dimmable 0 / 10V

2 x 2 - 19 / 28 / 37W, 2 400 to 4 500LM  
# LITCPX2X2ALO7SWW7UVOLT

2 x 4 - 28 / 36 / 50W, 3 800 to 6 500LM  
# LITCPX2X4ALO8SWW7UVOLT

### LED Projector

120 / 277V, 3 000 / 4 000 / 5 000K, die cast aluminium housing, integrated selectable photocell, bronze finish.

#### Knuckle mount

17W, 2 500LM

Replaces 150W, halogen or 70W, HID  
# LITESXF1P0SWW2THKDDB

#### Knuckle or yoke mount

9 / 19 / 34W, 1 500 to 5 000LM

Replaces 500W, halogen or 150W, HID  
# LITESXF1ALOSWW2KYDDB

22 / 37 / 56W, 3 500 to 7 500LM

Replaces 500W, halogen or 175W, HID  
# LITESXF2ALOSWW2KYDDB



Suitable for wet location

### LED Surface Mount Ceiling Fixture

6 in - 15W, 3 000 / 4 000 / 5 000K, 1 000LM, dimmable, polycarbonate lens, direct mounting on octagonal junction box, can be use in storage room, shower, bathroom, outside under soffit or covered area.

# JUNJSBT6INSWW290CRIWLMW



### LED Wallpack

7 / 12 / 17W, 120 / 277V, 3 000 / 4 000 / 5 000K, 1 000 to 2 400LM, photocell (on / off), dark brown polycarbonate housing, polycarbonate lens, die cast aluminium mounting back plate.

Replaces up to 100W, HID

# LITTSWLEDALOSWW2MVPEDDB



### LED Wallpack

120 / 347V, 3 000 / 4 000 / 5 000K, photocell (on / off), glass lens, cast aluminum housing, bronze finish.

16 / 36 / 59W, 2 300 to 8 500LM

Replaces up to 250W, HID

# LITWR1LEDALOSWW2UVPEDDB

55 / 82 / 112W, 8 200 to 16 100LM

Replaces up to 400W, HID

# LITWR2LEDALOSWW2UVPEDDB



Suitable for wet location

### LED Retrofit Module

For 5 or 6 in housing, 10.5W, 120V, 900LM, 2 700 / 3 000 / 3 500 / 4 000 / 5 000K, dimmable, aluminium baffle reflector paint white, diffuse lens, adjustable torsion springs, quick connector, E26 medium base socket adaptor.

Replaces 75W, incandescent

# JUN65BEMWSWW590CRI



Suitable for wet location

### LED Recessed Fixture

4 in - 8W, 120V, 2 700 / 3 000K / 3 500 / 4 000 / 5 000K, 560LM, dimmable, with 3 magnetic trims (white, black, silver), direct mount on octagonal junction box or in a existing 4 in recessed can (for retrofit purpose).

# LITSLMT48W



Suitable for wet location

### LED Recessed Fixture

4 in - 12W, 120V, 860LM, 2 700 / 3 000 / 3 500 / 4 000 / 5 000K, 75° beam, dimmable, white finish

# LITSLMB412WCCTWH

### SKYE SERIES



### Magnetic Trim

4 in - For Skye round recessed fixture

Black

Brushed nickel

Oil bronze

# LITSLMB412WRTBK

# LITSLMB412WRTBN

# LITSLMB412WRTOB



### MAESTRO SERIES



### Switch

120V, 2A, 150W DEL, 250W incandescent, with motion sensor, for residential use, white. Wallplate not included.

# LUTMSOPS2HWHC

### SKYLARK SERIES



### Dimmer

Compatible with : LED, incandescent, halogen, CFL, single and 3-way, white. Wallplate not included.

# LUTCTCL153PWH

### Caseta Wireless

### Kit Caseta

Includes: dimmer, wallplate, remote and smart bridge.

# LUTPBDGPKG1WC



**PHILIPS**



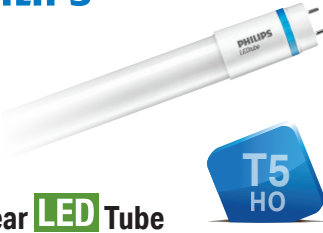
**Linear LED Tube**

4 ft - 10W, 100/277/347V, 1 600LM, dimmable, frosted glass

Replaces 32W, fluorescent

- 4 000K # PHI10T8CORE48840IF16GDIM
- 5 000K # PHI10T8CORE48850IF16GDIM

**PHILIPS**



**Linear LED Tube**

4 ft - 24W, 120/277/347V, made of polycarbonate

Replaces 54W, fluorescent

- 3 500K, 3 300LM # PHI24T5LEDHO483500IF
- 4 000K, 3 500LM # PHI24T5LEDHO484000IF
- 5 000K, 3 500LM # PHI24T5LEDHO485000IF

**KEENE**

by signify



**LED Ceiling Mount Fixture**

120/347V, 3 000/4 000/5 000K, die cast aluminum housing, polycarbonate lens, textured bronze finish.

- 28/40/60W, 3 870 to 9 130LM
- # KEEGCR60SCTG1S5M510BZ
- 70/80/90W, 9 000 to 13 310LM
- # KEEGCR90SCTG1S5M510BZ

**LIGHTOLIER**

by signify



Suitable for wet location

**LED Recessed Fixture**

2 700/3 000/3 500/4 000/5 000K, white trim

4 in - 11W, 700LM

Replaces 65W incandescent lamp

# LIGFD4R7ESCT1W

6 in - 15W, 1 100LM

Replaces 75W incandescent lamp

# LIGFD6R11ESCT1W

**LIGHTOLIER**

by signify



Suitable for damp location

**Commercial LED Recessed Fixture**

120/347V, adjustable lumen output and CCT

3 000/3 500/4 000K, aluminium white baffle reflector, dimmable 0/10V, metallic cable for connection included.

4 in - 5.5/8/12W, 500/700/1 000LM

# LIGCR4RLMCC2

6 in - 7/10/17W, 700/1 000/1 500LM

# LIGCR6RLMCC2

**Day-Brite**

CFI by signify



**LED High Bay Fixture**

120/347V, 4 000/5 000K, suspension open hook, 6 ft cord, 0/10V dimmable, motion sensor receptacle, polycarbonate lens.

14 000 to 21 000LM

# CFHICY1421L8CSTUN3DIM

28 000 to 33 000LM

# CFHICY2833L8CSTUN3DIM

**STANPRO**



**LED Recessed Fixture**

3.5 in - 12W, 3 000K, 920LM, pivoting light source.

Replaces 50W, halogen

- White # STAGMB12WA9030WH
- Brushed nickel # STAGMB12WA9030BN
- Black # STAGMB12WA9030BK



**LED Wraparound Surface Fixture**

120/277V, 4 000K, frosted polycarbonate lens.

2 ft - 27W, 2 695LM, replaces 1 x 32W, T8

Interconnectable up to 15 units

# STAL2WMG241G2

4 ft - 47W, 5 043LM, replaces 2 x 32W, T8

Interconnectable up to 8 units

# STAL2WMG481



**LED Strip Fixture**

With motion sensor

4 ft - 34/38/45W, 120/347V, 3 500/4 000/5 000K, 4 930 to 6 660LM

# STAL2TRV48LP45Q3C



**LED Projector**

120/277V, 3 000/4 000/5 000K, cast aluminum housing, polycarbonate lens, bronze finish.

50/80/100/150W, 6 800 to 19 200LM

- 1 Bracket mount # STAKITFLBMP5150MW3CBRETR
- 2 Pole mount 2-1/2 in # STAKITFLBMP5150MW3CBRPOT



**LED Surface Fixture**

4 ft - 3 500/4 000/5 000K, dimmable 0/10V, IP66, NSF, NEMA 4X, polycarbonate lens, stainless steel clips, V hook included.

42W, 120/277V, 5 450LM

# STAVTL4LS3W3C

67W, 120/277V, 8 560LM

# STAVTL4LS4W3C



**LED Strip Fixture**

120/347V, 3 500/4 000/5 000K, acrylic frosted lens

4 ft - 34/38/45W, 4 930 to 6 660LM

# STAL2STR48LP45Q3C

8 ft - 65/70/90W, 9 230 to 12 240LM

# STAL2STN96LP90Q3C



### GFI Receptacle

Self-test SmartlockPro GFCI, monochromatic, back and side wired, white.  
Nylon wallplate, screws and self-grounding clip included.



15A, 125V, tamper resistant  
# LEVGFTR1W



15A, 125V  
# LEVGFNT1W



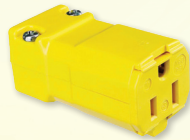
20A, 125V, tamper resistant, for residential / commercial applications.  
# LEVGFTR2W



20A, 125V, for residential / commercial applications.  
# LEVGFNT2W



**Valise Plug**  
15A, 125V, 2P, 3 wires.  
# HUBHBL5965VY



**Valise Connector Body**  
15A, 125V, 2P, 3 wires.  
# HUBHBL5969VY



**Expandable Cover**  
1G, horizontal / vertical, extra duty.  
Gray # HUBML500GCN  
White # HUBML500WCN



**Transparent Cover**  
2-3/4" deep,  
horizontal / vertical.  
# HUBMM420CCN



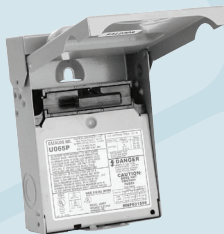
### SEQ Series Distribution Panel

Single phase 120 / 240V, NEMA, with main circuit breaker

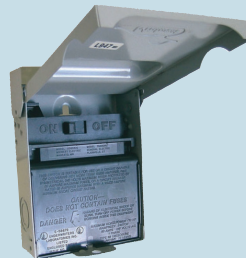
100A - 24 / 48 circuits  
# SIESEQ24100SM

125A - 24 / 48 circuits  
# SIESEQ24125SM

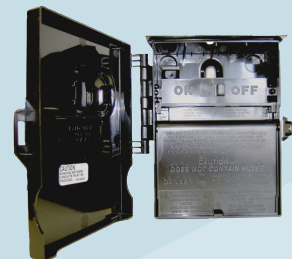
100A - 32 / 64 circuits  
# SIESEQ32100SM



**Non-Fusible "Pull-Out" Disconnect**  
60A, 120 / 240V, 1PH, NEMA 3R, metallic  
# MIDU065P



**Disconnect Switch**  
60A, 120 / 240V, 1PH, NEMA 3R, metallic  
# MIDU065NA1



**Disconnect Switch**  
60A, 120 / 240V, 1PH, NEMA 3R, plastic  
# MIDP065NA1

## 200A Electric Entrance Kit with Mast

Nova Scotia  
# LUMKITENTRE200MAT  
New-Brunswick  
# LUMKITENTRE200MATNB



**1x** Service Entrance Loadcentre  
40/80 circuits, 1 phase,  
3 wires, 240V, 200A  
# SEQ40200

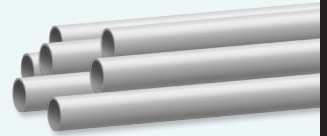


**2x** Steel Locknut for Conduit Fitting  
# BL200

Iberville®



**1x** Duct Seal Compound  
# DUCT1



**1x** SCEPTER™ Rigid PVC Conduit - 10ft x 2in  
# PVC2

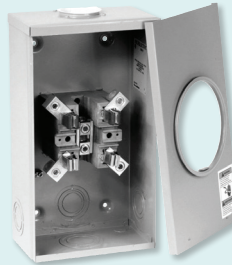
MICROELECTRIC



**1x** 200MH Mast Kit  
NS # LUM2MH  
NB # KIT200NBMH



**1x** Entrance Mast  
2-1/2 in x 12 ft  
# MM12



**1x** 4 Jaw Meter Socket  
NS # BQ2V  
NB # BQ2VGN



**2x** PVC Terminal Adapter  
# TA35



**1x** LB Type PVC Access Fitting  
# SLB60S



**1x** 90° PVC Elbow  
# EE3590

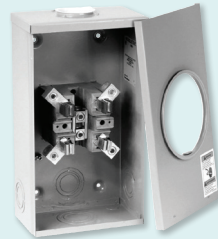
## 200A Electric Entrance Kit with PVC Accessories

Nova Scotia  
# LUMKITENTRE200PVC  
New-Brunswick  
# LUMKITENTRE200PVCNB



**1x** Service Entrance Loadcentre  
40/80 circuits, 1 phase,  
3 wires, 240V, 200A  
# SEQ40200

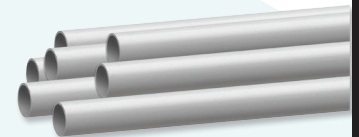
MICROELECTRIC



**1x** 4 Jaw Meter Socket  
NS # BQ2V  
NB # BQ2VGN



**1x** PVC Conduit Solvent Cement  
250 ml - with applicator cap  
# S100PT5



**2x** SCEPTER™ Rigid PVC Conduit  
10 ft x 2 in  
# PVC2



**2x** PVC Terminal Adapter  
# TA35



**1x** LB Type PVC Access Fitting  
# SLB60S



**1x** 90° PVC Elbow  
# EE3590



**1x** 2" PVC Service Entry Fitting  
# EF35

ABB

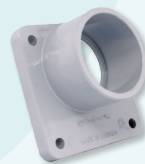


**2x** Steel Locknut for Conduit Fitting  
# BL200

Iberville®



**1x** Duct Seal Compound  
# DUCT1



**1x** 2" PVC Meter Hub  
# MHU35



LIMITED QUANTITY

### Outdoor Home Set Tool Kit

Includes: M18 FUEL QUIK-LOK power head string trimmer head and XC8.0 battery, M18 FUEL blower (tool only), M18 and M12 rapid charger.

# MILKIT282521ST2724BAT

LIMITED QUANTITY



### M18 FUEL Self-Propelled Mower Kit

21 in - Mulch, bag or side discharge. Includes: 2x High Output™ HD12.0Ah battery packs and rapid charger.

# MIL282322HD

### M18 FUEL QUIK-LOK ACCESSORIES



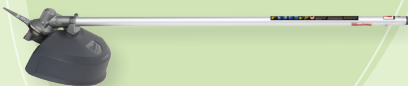
#### Articulating Hedge Trimmer Attachment

# MIL49162719



#### 3 ft Extension Attachment

# MIL49162721



#### Brush Cutter Attachment

# MIL49162738



#### PACKOUT Tumbler

Keeps drink hot or cold all day, dishwasher safe.

20 oz # MIL48228392R  
30 oz # MIL48228393R



#### M18 FUEL Chainsaw Kit

16 in - Faster cut speed in hardwoods vs 40CC gas engines. Reaches full throttle in under 1 second. Includes: M18 FUEL chainsaw (tool only), M18 Redlithium High Output HD12.0 battery pack and M18 & M12 rapid charger.

# MIL272721HD



#### M18 REDLITHIUM XC5.0 Batteries

2 pack, extended capacity.

# MIL48111852



#### M18 FUEL 2-Tool Combo Kit

Includes: 1/2 in hammer drill, impact wrench with 1/4 in HEX, multi-voltage charger M12 / M18, 2x XC5.0Ah batteries and a carrying case.

# MIL369722



#### Collapsible Garbage

19 x 24 in

# RAC51000



#### Combo Tool Belt

1 250 denier DuraTek fabric with high density nylon webbing around pocket openings.

Medium (21 to 34 in) # RAC43242  
Large (35 to 39 in) # RAC43243  
X-Large (40 to 44 in) # RAC43244



#### Compact Ratchet Cable Cutter

Cutting range: aluminum 750MCM, communication cables 1-1/8", copper 500MCM. Simple one-handed operation, compact for working in tight spaces.

# GRE759

**FLUKE**



### Voltage Detector

*Voltbeat™ technology and continuous self-test. Upon detection, tip glows and beeper sounds. CAT IV, 1 000V.*

# FLU1ACA1II



### GFCI Outlet Tester

*Plug it into the outlet. With bright LED and beeping, check wiring status or identify common wiring problems on standard and GFCI outlets.*

# FLUST120+



### T5-1000 Tester

*Voltage, continuity and current tester. Excellent front-line troubleshooting and measurement tool, CAT III, 1 000V.*

# FLUT51000



### RMS Clamp Meter

*Combines general electrical measurements with temperature and capacitance to create one solid troubleshooting tool. CAT III 600V, CAT IV 300V.*

# FLU324



### Hex Head Concrete Screws

3/16 x 1-1/4 in

Box of 100 # VIS72100



### Hex Head Concrete Screws

1/4 x 1-1/4 in

Box of 100 # VIS72240

**KLEIN TOOLS**



### Cable Splicer's Knife

*Special-purpose short blade with textured handle for comfort and firm grip.*

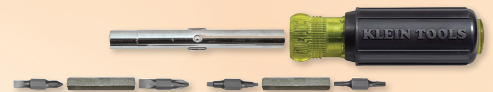
# KLE44200



### Side-Cutting Slim Pliers

*9-3/8 in - Cuts ACSR, screws, nails and most hardened wire.*

# KLED20009NE



### 11-in-1 Screwdriver / Nut Driver

*Phillips, Slotted, Square, Torx Bits.*

# KLE32500

**DURACELL**



### Ion Speed 1000 AA and AAA Battery Charger

*Recharge 2 or 4 batteries at a time in 4-8 hours. Includes: 4x AA rechargeable batteries.*

# DURCEF14DX4N

### Rechargeable Pre-Charged NiMH Batteries

*Guaranteed to last for 10 years or 400 charges, and will hold a charge for up to 1 year when not in use. Compatible with any NiMH charger (not included).*



AA - Pack of 4  
# DURDX1500B4N



AAA - Pack of 4  
# DURDX2400B4N

**Electrical Panel SPA Kit**

120/240V - NEMA 3R

- 20A # SIEW0408ML112520
- 30A # SIEW0408ML112530
- 40A # SIEW0408ML112540
- 50A # SIEW0408ML112550
- 60A # SIEW0408ML112560



**EQL loadcentres**  
Single phase - main lug 120/240V



120/240V, 125A, NEMA 1,  
24 / 48 circuits, white  
# SIEEQL24125DW



120/240V, 125A, NEMA 1,  
16 / 32 circuits, gray  
# SIEEQL16125D



Download the Lumen app!



Place your orders directly  
online at [lumen.ca](http://lumen.ca) or via  
the Lumen app.



Two branches to better serve Atlantic Canada!

**DARTMOUTH**

121, Ilsley Avenue, unit 119, Dartmouth (NS), B3B 1S4  
Tel. : 902 468-7996 / Fax : 902 468-7997  
Toll free : 1 844 516-0158

**MONCTON**

1070, St-George Blvd., unit 1A, Moncton (NB), E1E 4K7  
Tel. : 506 382-1396 / Fax : 506 382-9376  
Toll free : 1 844 311-1396



Prices are subject to change without notice. All images are for illustrative purposes only. Air Miles program is reserved to the Electrical Contractor ECAO or OEL members only. We are currently experiencing an exceptionally high demand for many popular products. As a result, some products advertised in this flyer may not be available. Please check your local branch for availability or visit [lumen.ca](http://lumen.ca). We are currently working on replenishing supplies as quickly as possible and apologize for any inconvenience this may cause.



FSC  
POUR POSITION  
SEULEMENT