



A Sonepar Company

**ATLANTIC**

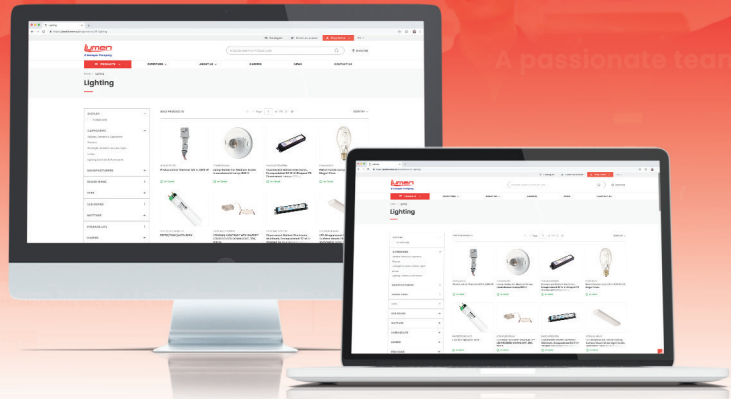
Special deals  
**May-June**  
2019



Valid for Electrical Contractors  
ESA and ECA members only

**lumen**  
A Sonepar Company

**NEW LOOK,  
NEW EXPERIENCE**



**View our products and  
availability in stock.**

**Now accessible to everyone!**

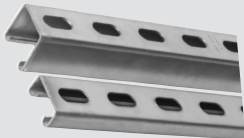
**lumen.ca**



**Pre-Galvanized Channels**  
10 ft - 1-5/8" x 1-5/8", 12 gauge



**Full scale**  
# SUPA120010PGC



**Half slot**  
# SUPA1200HS10PGC

**Superstrut SuperMag Magnetic Fittings**

Steel with SilverGalv™ finish



**Magnetic fitting with 90° angle**  
2 holes, 1-7/8" (height) x 2" (length)  
# SUPAB202MEG  
4 holes, 4-1/8" (height) x 3-1/2" (length)  
# SUPAB205MEG



**Magnetic flat L-Bracket**  
# SUPAB219MEG



**Magnetic square washer**  
For 1/4" bolt  
# SUPAB241M1/4EG  
For 3/8" bolt  
# SUPAB241M3/8EG  
For 1/2" bolt  
# SUPAB241M1/2EG



**Magnetic flat T-Bracket**  
# SUPAB220MEG



**LED Lamps**

**GU10**



**GU10** - 7W, 3000K, 500LM  
35° beam - Dimmable  
Replaces 50W, halogen  
# LAMLEDGU107W3KFL



**A19** - 9.5W, 2700K, 750LM  
Non-dimmable  
Replaces 60W, incandescent  
# LAMLEDA199W27KND



**A19** - 9.5W, 2700K, 800LM  
Dimmable  
Replaces 60W, incandescent  
# LAMLEDA199W27KDIM

**PAR20**



**PAR20** - 7W, 3000K, 500LM  
40° beam - Dimmable  
Replaces 50W, halogen  
# LAMLEDPAR207W3KFL

**MR16**



**MR16** - 7W, 3000K, 500LM  
35° beam - Dimmable  
Replaces 50W, halogen  
# LAMLEDMR167W3KFL



## LED Striplight

120/277V, 4 000K, non-dimmable

48 in - 4 500LM

Replaces 2 x 32W, T8

# LITMNSLL482LLMVGZ40K

96 in - 8 200LM

Replaces 4 x 32W, T8

# LITMNSLL962LLMVGZ40K



## LED Surface Fixture

120/277V, 4 000K, dimmable  
White acrylic lens

2 ft - 32W, 3 000LM

Replaces 1 x 32W, T8

# LITFMLWL24840ZTMVOLT

4 ft - 48W, 4 600LM

Replaces 2 x 32W, T8

# LITFMLWL48840ZTMVOLT



## LED High Bay Fixture

120/277V, 4 000K, medium distribution  
Acrylic lens, 6 ft cord, white

18 000LM

Replaces 6 x T8, 32W or 4 x T5HO, 54W

# LITIBEL2418LMATCMDMV4KCS

22 000LM

Replaces 6 x T5HO, 54W

# LITIBEL2422LMATCMDMV4KCS



## LED Panel for T-Bar

2 x 2 - 120/277V, 3 200LM

3 500K # LITCPX2X23200LM35K

4 000K # LITCPX2X23200LM40K

2 x 4 - 120/277V, 4 000LM

3 500K # LITCPX2X44000LM35K

4 000K # LITCPX2X44000LM40K



## LED Projector

120V, 4 000K, bronze finish, arm mount

24W, 2 500LM

# LITQTELEDP140K120THKDD

40W, 4 000LM

# LITQTELEDP240K120THKDD



## LED Wall Pack

14W, 120V, 4 000K, 1 242LM, photocell included

Replaces up to 70W, MH

Bronze # LITOVWPLED40K120PEDBHP17

White # LITOVWPLED40K120PEWHHP17



## LED High Bay Fixture

4 000K, dimmable 0-10V, 6 ft cord,  
hook, clear glass lens, 120° beam,  
white housing

Replaces up to 400W, HID or 6 fluorescents T5HO

120/277V, 18 000LM

# LITJEBL18L40K80CRIWH

347V, 18 000LM

# LITJEBL18LHV40K80CRIWH

Replaces up to 400W, HID or 8 fluorescents T5HO

120/277V, 24 000LM

# LITJEBL24L40K80CRIWH

347V, 24 000LM

# LITJEBL24LHV40K80CRIWH

Replaces up to 575W, HID or 10 fluorescents T5HO

**NEW!** 120/277V, 30 000LM

# LITJEBL30L40K80CRIWH

**NEW!** 347V, 30 000LM

# LITJEBL30LHV40K80CRIWH



Suitable  
for wet  
locations

## Recessed LED Fixture

120V, 3 000K, dimmable, junction box,  
approved for daisy chain installation, matte white

3 in - 550LM

Remplace jusqu'à 60W, incandescent

# LITWF3LED30KMW

4 in - 675LM

Replaces up to 65W, incandescent

# LITWF4LED30KMW



## White Track Lighting

3 head step cylinder (lamps not included)

2 ft - 50W, PAR20

# JUNR3F511WWH

4 ft - 75W, BR30/PAR30L

# JUNR4K3512WWH

## LED Trac-Lites™ Cone Track Head

10W, 3 000K, 80 CRI,  
wide beam, for Juno track

Replaces 50W MR16, halogen

Black # JUNR600L3KFBL

White # JUNR600L3KFWH





**CFI**

**LED Surface Fixture**

48 in - 120/277V, 4000LM  
Non-dimmable, acrylic frosted lens  
*Replaces 2 x 32W, T8*

3500K # CFISSEZ440L835UNV  
4000K # CFISSEZ440L840UNV



**CFI**

**Linear Strip Fixture**

2 x F54T5HO (lamps not included)

120/277V # CFISV4S254UNV1/2EB  
347V # CFISV4S254347PG

**Double tandem**

4 x F54T5HO (lamps not included)

120/277V # CFISV8S254UNVPV  
347V # CFISV8S254347PV



**CFI**

**Fluorescent T-Bar Troffer**

120V, recessed (lamps not included)

**1 x 4 ft**  
2 X F32T8 # CFI1TG823201UNV12EB  
**2 x 4 ft**  
2 x F32T8 # CFI2TG823201UNV  
3 x F32T8 # CFI2TG833201UNV13EB  
4 X F32T8 # CFI2TG843201UNV14EB



**CFI**

**LED T-Bar Fixture**

120V/277V, 4000K  
0-10V Dimmable / Ribbed acrylic diffuser

1 x 4 - 4100LM  
# CFI1FGG41B8404DUNVDIM  
2 x 2 - 3800LM  
# CFI2FGG38B8402DUNVDIM  
2 x 4 - 4200LM  
# CFI2FGG42B8404DUNVDIM



**CFI**

**High Bay Fluorescent Fixture**

With 6 ft cord (lamps not included)

4 x F54T5HO, 120/277V  
# CFISHE454UNVCORD  
4 x F54T5HO, 347V  
# CFISHE454347VCORD  
6 x F54T5HO, 120/277V  
# CFISHE654UNVCORD  
6 x F54T5HO, 347V  
# CFISHE654347VCORD



**KEENE**

**LED Ceiling Fixture**

4000K, bronze

**40W, 4735LM** - *Replaces up to 150W, HID*  
120/277V # KEEGC40NWG1SM58BZ  
347V # KEEGC40NWG1SM56BZ  
**57W, 6313LM** - *Replaces up to 175W, HID*  
120/277V # KEEGC57NWG1SM58BZ  
347V # KEEGC57NWG1SM56BZ

**LIGHTOLIER**



**LED Recessed Fixture**

3 in - 8W, 120V, 3000K, 550LM  
Regressed, large beam, junction box included  
*Replaces 50W, halogen*

White # LIGMD3R069301FW



**KEENE**

**LED Bollard Fixture**

IP65 - Rugged aluminum construction  
25W, 120/277V, 4000K, 2508LM  
Clear polycarbonate lens

42 in x 8 in  
# KEEBL25NWG158BZ



**KEENE**

**LED Wallpack**

40W, 120V, 4000K, 4973LM, gray, photocell included, wall mount, mounted to vertical surfaces or mounted onto 1-1/2" O.D. arms (sold separately).

*Replaces up to 150W, HID*  
# KEEDTD40NWG3AR5TLRPC1GY3

**LIGHTOLIER**



**LED Recessed Fixture**

3 in - 8W, 120V, 3000K, 550LM  
Gimbal, narrow beam, junction box included  
*Replaces 50W, halogen*

Matte white # LIGMG3R06930NF1W  
Matte black # LIGMG3R06930NF1B  
Brushed nickel # LIGMG3R06930NF1N



**PHILIPS**

**Linear LED Tube**

48 in - 24W, 120/277/347V, made of polycarbonate  
*Replaces 54W, fluorescent*

3500K, 3000LM # PHI24T5LEDHO483500IF  
4000K, 3500LM # PHI24T5LEDHO484000IF  
5000K, 3500LM # PHI24T5LEDHO485000IF



**Linear LED Tube**

48 in - 12W, 120/277/347V, 1800LM, made of glass  
*Replaces 32W, fluorescent*

3500K # PHI12T8PRO48835IFG  
4000K # PHI12T8PRO48840IFG  
5000K # PHI12T8PRO48850IFG





**LED Shoplight**

4 ft - 40W, 120V, 4000K, 4000LM  
Non dimmable, pull chain switch,  
5 ft cord with plug, polycarbonate lens  
**Replaces 2 X 32W, T8**

# STALSHOPS240W40K120NDSTD

**\$38<sup>95</sup>**

**LED Wallpack**

120/277V, 4000K,  
bronze finish

50W, 5826LM

**Replaces 175W HID or 150W HPS**

# STALWPFCO50W40K120277BRZ

80W, 9053LM

**Replaces 250W HID or 200W HPS**

# STALWPFCO80W40K120277BRZ



**\$159**

**\$199**

**NEW!**

**\$199**



**Temporary LED High Bay Fixture**

150W, 120V, 15000LM, 360° beam, 20 ft cord,  
18 AWG/3C wire, remote control included

# STATHBDSC150WCWNDORSTD



**LED Fixture with Motion Sensor**

2 x 12W, 120/277V, 4000K  
**Replaces up to 70W, HID**

Bronze # STALEDSL2H24W40K120VBRZ  
White # STALEDSL2H24W40K120VWHT

**Portable LED Projector**

120V, 120° beam, battery autonomy of 3 hours at  
100% luminosity and 12 hours at 20% luminosity.



20W, 1100LM  
# STAPFLBTRY10024020WCWYLS



50W, 3250LM  
# STAPFLBTRY10024050WCWYLS

**MAESTRO SERIES**



**Dimmer**

Compatible with multiple modes:  
incandescent, halogen, CFL, LED.  
Single and 3-way dimmer.

# LUTMACL153MHWHC



**Table Lamp**

100W (LED and CFL)  
and 300W. Incandescent  
and halogen.

# LUTPPKG1PWHC



**Wall Mount**

150W (LED and CFL)  
and 600W. Incandescent  
and halogen.

# LUTPPKG1WWHC

*Caséta* Wireless  
**Dimmer and Remote Control Kit**



**Occupancy Sensor**

800W, wall switch with passive infrared detector  
and auto-tuning, wallplate not included.

# LEVODS10IDW



**Decora Digital Switch**

24 hour timer with Bluetooth technology,  
1800W incandescent (120V), 15A fluorescent (120V),  
5A 600W LED/CFL (120V), wallplate not included.

# LEVDDS15BDZ



**Decora Digital Dimmer**

24 hour timer with Bluetooth technology.  
Dimmable 450W LED/CFL (120V),  
1000W incandescent (120V),  
wallplate not included.

# LEVDDMX1BLZ





## Commercial Series

## Decorator Commercial Series

### Duplex Receptacle



15A, white  
# HUBCR15WHI



20A, white  
# HUBCR20WHI



15A, isolated ground  
# HUBCR5252IG

### Switch



15A, 1P, white  
# HUBCS115W



20A, 1P, white  
# HUBCS120W



15A, 3W, white  
# HUBCS315W

### Duplex Receptacle



15A, 125V  
# HUBDR15WHI



20A, 125V  
# HUBDR20WHI

### Switch



15A, 1P, 120/277V  
# HUBDS115W



15A, 3W, 120/277V  
# HUBDS315W

20A, 1P, 120/277V  
# HUBDS120W

20A, 3W, 120/277V  
# HUBDS320W



### Motor Disconnects

NEMA 4X, 12, commercial grade

30A, 7.5HP # HUBMD30

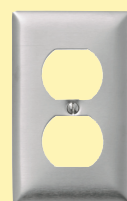
60A, 20HP # HUBMD60



### Toggle Plate

1G, stainless steel

# TEM97071SS



### Duplex Plate

1G, stainless steel

# TEM97101SS



### Decorator Wall Plate

1G, stainless steel

# TEM97401SS



AUTHORIZED DISTRIBUTOR

### Heat-Shrink Tubing - 1000 V

Cal. #8 - #2, diameter: 0.17" - 0.41"  
16" # RAYWCSM1641200S

Cal. #6 - #4/0, diameter: 0.25" - 0.64"  
24" # RAYWCSM2461200S

Cal. #2 - 500 MCM, diameter: 0.35" - 0.94"  
34" # RAYWCSM3481200S

Cal. #2/0 - 750 MCM, diameter: 0.51" - 1.12"  
48" # RAYWCSM48121200S

Cal. 250 - 1 000 MCM, diameter: 0.68" - 1.27"  
56" # RAYWCSM56161200S

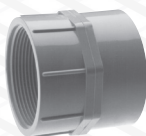
Cal. 500 - 1 500 MCM, diameter: 0.90" - 1.40"  
70" # RAYWCSM70201200S



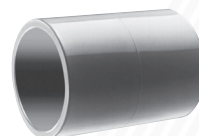
## PVC Connection 2" Electric Entry



*Terminal Adapter*  
# SCETA35



*Female Adapter*  
# SCEFA35



*Coupling*  
# SCEEC35



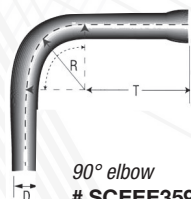
*Access fitting, LB type*  
# SCESLB60S



*Meter offset*  
# SCEMO35



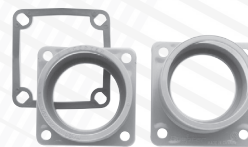
*Service entrance fitting*  
# SCEEF35



*90° elbow*  
# SCEEE3590

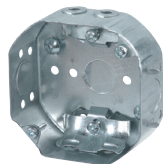


*Pipe strap PVC, 2 holes*  
# SCEPS35



*Meter hub*  
# SCEMHU35

## IBERVILLE



**Octagonal Box**  
4 in x 1 1/2 in  
# IBE54151L



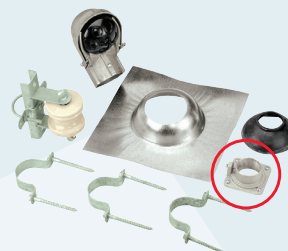
**Dry-wall LHTQ Junction Box**  
14.5" cu, groupable  
# IBE1304LHTQ

## MICROELECTRIC

### Service Entrance Masts and Accessories



**200AM**  
# MICLUM2



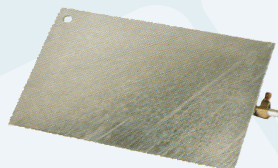
**200MH**  
# MICLUM2MH

### Meter Socket



**600V**  
# MICBQ2V

### Galvanized Ground Plate Complete with JAB



# BLA1016BTB

### Outside Mast 2-1/2" Diameter



**10 ft**  
# MICMM10

**12 ft**  
# MICMM12





## Non-Fused Disconnect Switch

60A, 1PH, 120/240V  
NEMA - Type 3R

# SIEWN2060



## Circuit Breaker Enclosure

1 or 2 poles

15 @ 60A  
# SIEEQS260

15 @ 125A  
# SIEEQS2125



## Electrical Panel SPA Kit

120/240V - NEMA 3R

20A	# SIEW0408ML112520
30A	# SIEW0408ML112530
40A	# SIEW0408ML112540
50A	# SIEW0408ML112550
60A	# SIEW0408ML112560



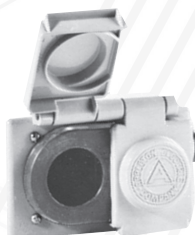
## 1G Cast Iron Box

1/2 in  
# APPFS1  
3/4 in  
# APPFS2



## 1G Cast Iron Box

1/2 in  
# APPFSC1  
3/4 in  
# APPFSC2



## 1G Duplex Cover

1-3/8" hole diameter  
# APPFSKWRD



## Weatherproof Wire Connector

Silicone-based sealant

<b>Gray/Orange</b> (22 to 14 AWG)	<b>Gray/Red</b> (18 to 8 AWG)
# IDE301161	# IDE301162
# IDE301261J	# IDE301262J
# IDE301361	# IDE301362



## Clear Cover

Weatherproof  
# INTWP5100C

## Extendable Cover

Weatherproof, extra-duty



### Single Gang

Gray	# INTWP7000G
White	# INTWP7000W
Bronze	# INTWP7000BR



### Double Gang

Gray	# INTWP7200G
White	# INTWP7200W
Bronze	# INTWP7200BR



**BROAN**



### Compact Central Vacuum Unit

120V, 12A, 70dB, 500 Air Watt, 29-3/4" height  
Disposable bag system / for 4000 ft² house

# BROBQ1



### Deluxe Accessories

**Includes:** 1 x 30 ft low voltage hose, 3 x brushes, 2 x nozzles,  
1 x telescopic wand, 2 x mounting brackets and 1 x storage bag.

# BROBNAK2

### Fan

FLEX DC, 50-80-110CFM



# BROAE50110DC



With humidity sensor  
# BROAE50110DCS



With light  
# BROAE50110DCL



### Hinged Cover Junction Box

NEMA 1



6 x 6 x 4 in

# BELEUKO664

8 x 8 x 4 in

# BELEUKO884

8 x 8 x 6 in

# BELEUKO886

10 x 10 x 4 in

# BELEUKO10104

10 x 10 x 6 in

# BELEUKO10106



## NEW Propane Gas Grills

### LEX Series

- Double walled stainless steel lid
- Ceramic infrared bottom and rear burner
- Range side burner
- Stainless steel cooking grids

- Backlit control knobs
- Stainless steel shelves with tool hooks and holders
- Integrated ice / marinade bucket and cutting board



**LEX Series** - 106 500 BTU, 7 burners,  
1 025 in² cooking surface, **with centre drawers**

# NAPLEX730RSBIPSS



**LEX Series** - 74 000 BTU, 6 burners,  
815 in² cooking surface

# NAPLEX485RSBIPSS1

### ROGUE Series

- Folding side shelves
- Dual-level stainless steel sear plates
- Detachable storage basket
- Accu-probe™ temperature gauge



**ROGUE Series** - 57 000 BTU, 5 burners,  
745 in² cooking surface

# NAPR525SIBPSS



### Cable Cutter

For RIZE steel cable

# RIZ30340/0690TN



### 500 ft Cable

WC2, 1/16" diameter

# RIZ30380/RWC2



### Starter Kit

Including cable length counter

1/16 in - KL75 for cable WC2

# RIZ30398/KL75SK

3/32 in - KL100 for cable WC3

# RIZ30394/KL100SK



### Indoor/Outdoor Vinyl Labels

Adheres to irregular, curved or rough surfaces. Resistant to chemicals, oils and detergents. (BLACK ON WHITE)

1/2" # BRAM21500595WT

3/4" # BRAM21750595WT



### Safety Padlocks

Lightweight, non-conductive and non-sparking body. Fiberglass reinforced nylon body and triple-coated hardened steel shackle. Shackle clearance 1-1/2".

Green # BRA99564

Red # BRA99552

Yellow # BRA99570

Blue # BRA99556



### Clamp-On Breaker Lockouts

Versatile and easy to install using the proprietary thumbwheel design - no screwdrivers needed! Works on a wide range of single-pole and internal-trip multi-pole breakers.

# BRA65965



Tools not included

### Fiberglass Step Ladder

Rated ANSI Type IA, load capacity of 300lbs, equipped with magnet and multiple tool slots. SHOX impact absorption system, new Raptor boots mechanically fastened to the upper boot to create a secure slip-resistant footing.

6 ft # LOUFS1506

8 ft # LOUFS1508



Tools not included

### Fiberglass Step To Shelf Ladder

Converts from a step ladder into a shelf ladder for a 2-in-1 combination in order to get closer to the work area. V-shape Pro Top allows the ladder to lean against walls, buildings and poles. Supports up to 300 lbs, type 1A.

6 ft # LOUFXS1506

8 ft # LOUFXS1508



### Fiberglass Extension Ladder

Rated ANSI Type IA, load capacity of 300lbs, equipped with the MAXLOCK rung lock, also includes a QuickLatch system that secures the ladder when extended.

24 ft # LOUFE3224

28 ft # LOUFE3228

**Milwaukee**



### 18V M18 String-Trimmer

With brushless motor (FUEL), fast charging (M12 and M18) charger and 9.0A.H battery.

# MIL272521HD



Get a **RedLithium battery 9.0A.H. (MIL48111890)** for **FREE** when you purchase this kit!

### 18V M18 Chainsaw - 16"

With brushless motor (FUEL) and a fast charging (M12 & M18) charger. Cuts faster than gas, and delivers up to 150 cuts per charge. **Includes:** 12.0A.H. battery.

# MILKIT272721HD



### M18 FUEL™ 1" SDS Plus Rotary Hammer

with M18™ HAMMERVAC™ Dedicated Dust Extractor. **Includes:** two M18™ REDLITHIUM™ XC5.0 battery packs, multi-voltage charger, side handle, HEPA filter, depth rod and carrying case.

# MIL271222DE

**RACK-A-TIERS**



### Tug Wise Standard

Attach the Tug Wise to the base of your reel and you're ready to pull cable in minutes! Can hold up to 1000 lbs. 4 screw holes for easy attachment. Threaded hole accommodates a 1/2" rigid thread.

# RAC11931



### Copper Wire Stripper

Recover copper wire and aluminum quickly and easily! Strips from 14AWG to 750MCM (1-1/4" max), 1/2 horsepower motor, strips solid core or braided wire.

# RAC47200



### Impact Robertson Bits

Designed to be used with impact screwdrivers.

4" - Green #1

# RAC70144R

4" - Red #2

# RAC70244R

6" - Green #1

# RAC70166R

6" - Red #2

# RAC70266R



**Wera**

### Kraftform Kompakt 26

Retractable bayonet blade. Integrated magazine for bit storage. Tough viscous bits for universal use. Ergonomic Kraftform handle for low-fatigue working. Comes with pouch.

# WER051025



### Tool-Check PLUS - 39 PC Kit

With 1/4" wrench, rapidaptor bit holder, 1/4" adapter and socket.

Metric # WER056490

Imperial # WER056491

**FLEX LITE**



### Camera & Lighting Combination

7 in - Color readable in the sun

# FLEFLX3KCAMMON12V

**KNIPEX**



### Wire Stripper and Dismantling Tool

For dismantling round cable sheaths made of PVC, rubber, silicone or PTFE from 6-29mm diameter. Changing from circular to longitudinal cutting by turning the tool body. Replaceable blade.

# KNI1630135SB



### Cobra Water Pump Pliers

Adjustment at the touch of a button.

150mm length, 30mm bolt opening

# KNI8701150SBA

180mm length, 36mm bolt opening

# KNI8701180SBA



**LED** Light

For nacelle and lifting platform

# FLEFLXNACELLE2G



**KLEIN  
TOOLS®**



### 5" Flush Cutter

Lightweight, Improved knife design snips wire up to 16 AWG producing a flat, flush cut. Steel return spring for increased comfort during repetitive cutting. Great for cutting small wire, zip ties and other fine material.

# KLED2755



### Tradesman Pro™ Tough Box Cooler

Keeps cool up to 30 hours. Main compartment has a 16L (17 quart) capacity. Supports up to 300lbs (136kg). Not only does this cooler carry lunch, it doubles as a handy place to sit.

# KLE55600



### USB Digital Meter and Tester

**USB-A (type A)** - Continuously monitor up to 1000 hours of voltage, current, capacity/charge delivered, energy, and resistance (calculated). Tests most common standard USB-A ports, including Qualcomm Quick Charge® ports.

# KLEET910



### Aluminum Hand Bender

For 1/2" EMT

# GRE840AH

1/2" rigid conduit  
or 3/4" EMT

# GRE841AH



### Slug-Buster® Knockout Kit

1" ratchet wrench allows use with both 3/8" and 3/4" draw studs. 1/2" to 2" conduit.

# GRE7238SB



### Carbide Cutter Set

7 pieces. Cuts stainless steel quickly and easily. Includes: 7/8", 1-1/8", 1-3/8", 1-3/4" and 2".

# GRE660



### 24" Infra-Red Window

Large window, aluminum.  
Many other models available.

# FLIIRW24PC



### Voltage, Continuity, and Current Tester

Carries a CAT III-1000V/CAT IV-600V safety rating and a 200A/1000V measuring range.

# FLIVT81000



### Clamp Meter

Combines thermal imaging with electrical measurement into powerful inspection, troubleshooting, and diagnostic tools.

# FLICM275



### Concrete Screws

Blue ceramic hexagonal head, 1/4 x 1-1/4"

# VIS72247



### Metal Screws

Pan square head (zinc), Type A, 10 x 1-1/4"

# VISPMS10X11/4POT500



Tek 5 head



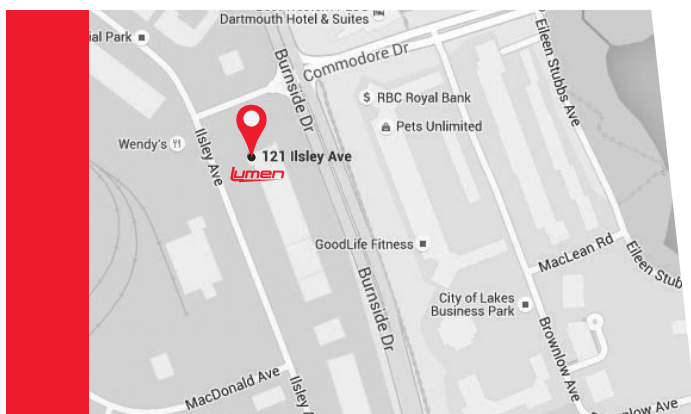
### Self-Drilling Screws (Tek 5)

Hexagonal head, 12-24 x 1-1/2"

# VIS44439

# Electrical Wholesale Distributor

## SERVING ATLANTIC CANADA



### DARTMOUTH

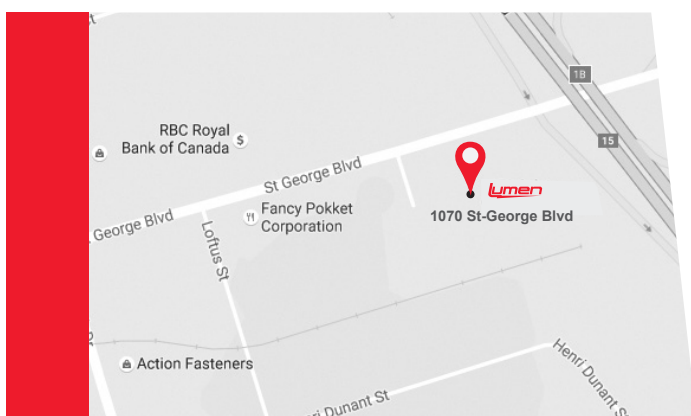
121, Ilsley Avenue / (NS) B3B 1S4

**Tel.:** 902 468-7996 / **Fax:** 902 468-7997

**Toll free:** 1 844 516-0158

**Branch manager:** Wayne Hall

**Email:** wayne.hall@lumen.ca



### MONCTON

1070, St-George Blvd / (NB) E1E 4K7

**Tel.:** 506 382-1396 / **Fax:** 506 382-9376

**Toll free:** 1 844 311-1396

**Branch manager:** Glenn Leaman

**Email:** glenn.leaman@lumen.ca



*New mobile application*

◀ Look for the Lumen icon!



LEARN MORE:  
[lumen.ca/app](http://lumen.ca/app)



Prices are subject to change without notice. All promotions are valid from **May 1<sup>st</sup> to June 30<sup>th</sup> 2019** while supplies last. All images are for illustrative purposes only. Air Miles program is reserved to the Electrical Contractor ESA or ECA members only.