

Lumen

A Sonepar Company

ATLANTIC

Special deals
**January -
February
2023**



AIR MILES.

Valid for Electrical Contractors
ESA and ECA members only



Westinghouse

PORTABLE GENERATOR



120V, 2200W, inverter motor,
up to 12 hours of battery life.

WESIGEN2200C



120V, 3600W, dual-fuel, electric start,
up to 14 hours of runtime. Includes CO²
and oil level sensor.

WESWGEN3600DFC



120/240V, 9500W, bi-fuel, electric
and remote start, up to 17 hours
of battery life. Includes CO² sensor.

WESWGEN9500DFC

nvent
RAYCHEM



WINTER

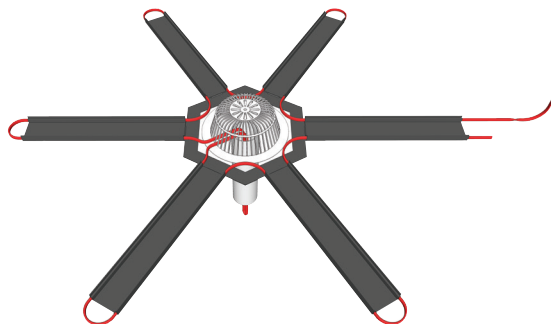


**Has winter freeze caused you problems?
Avoid them by installing a heating cable!**



Pre-Assembled Heating Cable
120V, self-regulating, with 6 ft lead cable
and lighted plug.

6 ft	# RAYFG16P
12 ft	# RAYFG112P
18 ft	# RAYFG118P
24 ft	# RAYFG124P
36 ft	# RAYFG136P
50 ft	# RAYFG150P
75 ft	# RAYFG175P
100 ft	# RAYFG1100P



RIM-DT Ice Melting System for Roof Drains
Includes cable, connection kit and channel panel.

120V	# RAYF6205AL231
208/240V	# RAYF6205AL232

signify

PHILIPS



Linear LED Tube

4 ft - 10W, 100/277/347V, 1600LM, dimmable, frosted glass
Replaces 32W, fluorescent

4 000K # PHI10T8CORE48840IF16GDIM
5 000K # PHI10T8CORE48850IF16GDIM



Linear LED Tube

48 in - 24W, 120/277/347V, made of polycarbonate
Replaces 54W, fluorescent

3 500K, 3 300LM # PHI24T5LEDHO483500IF
4 000K, 3 500LM # PHI24T5LEDHO484000IF
5 000K, 3 500LM # PHI24T5LEDHO485000IF

KEENE

by signify



LED Wall Pack

20W, 120/277V, 4 000K, 2 277LM, bronze.
Replaces 70W, HID

Without photocell
KEETW20NWG18BZ

With photocell
KEETW20NWG1PCB1BZ



LED Ceiling Mount Fixture

120/347V, 28/40/60W, 3 870 to 9 130LM,
3 000/4 000/5 000K, die cast aluminum housing,
polycarbonate lens, textured bronze finish.

KEEGCR60SCTG1SM510BZ

Day-Brite

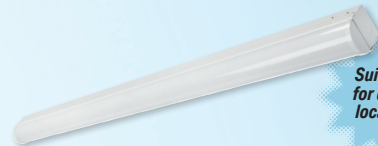
CPI
by signify



LED Panel for Suspended Ceiling

2 x 4 - Adjustable power 120/347V and adjustable
CCT 3 500/4 000/5 000K, dimmable.

CF12SBP3550L8CS4UN3DIM



Suitable
for damp
location

LED Strip Fixture

120/347V, selectable CCT (3 500/4 000/5 000K),
dimmable 0/10V, frosted acrylic lens, white metal housing
paint, safety cable between lens and fixture housing.

4 ft - 2 448LM

CFISDS42448L8CSTUN3DIM

8 ft - 4 998LM

CFISDS84998L8CSTUN3DIM

Liteline

LED Recessed Fixture

120V selectable CCT, dimmable, white finish



Suitable
for wet
location

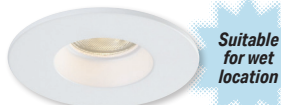
SKYE SERIES

4 in - 12W, 860LM, 75° beam

LITSLMB412WCCTWH

6 in - 16W, 1 400LM, 80° beam

LITSLMB616WCCTWH



Suitable
for wet
location

LUNA SERIES

2 in - 7W, 565LM, 40° beam

LITRA27F90WH



Suitable
for wet
location

LED Recessed Fixture

4 in - 8W, 120V, 560LM, dimmable, 5CCT
(2 700/3 000K/3 500/4 000/5 000K), 3 magnetic
trim (white, black, silver), direct mount on octagonal
junction box or in a existing 4 in recessed can
(for retrofit purpose).

LITSLMT48W

LUTRON.

**MAESTRO
SERIES**



Switch

120V, 2A, 150W LED, 250W incandescent,
with motion detector, for residential use, white.
Wallplate not included.

LUTMSOPS2HWHC

**SKYLARK
SERIES**



Dimmer

Compatible with : LED, incandescent,
halogen, CFL, single and 3-way, white.
Wallplate not included.

LUTCTCL153PWH

**DIVA
SERIES**



Dimmer

Compatible with : LED, incandescent,
halogen, CFL, single and 3-way, white.
Wallplate not included.

LUTDVCL153PHWHC



Suitable
for wet
location

Recessed LED Fixture

4 in - 9.6W, 120V, 3 000K, 675LM
dimmable, junction box, approved
for daisy chain installation, matte white.
Sold in multiple of 6 only.

Replaces up to 65W, incandescent
LITWF4LED30KMWM6



High Bay LED Fixture

120 / 347V, adjustable CCT (4 000 / 5 000K), medium
distribution, open hook with 7 ft galvanized safety
cable, 6 ft cord, dimmable 0 / 10V, polycarbonate lens.

12 000 / 15 000 / 18 000LM

White housing

LITCPRBALO13UVOLTSWW9DWH

Black housing

LITCPRBALO13UVOLTSWW9DBL

21 000 / 24 000 / 27 000LM

White housing

LITCPRBALO14UVOLTSWW9DWH

Black housing

LITCPRBALO14UVOLTSWW9DBL



LED Striplight

120 / 277V, 4 000K, frosted acrylic lens.

48 in - 4 000LM

LITCSSL484000LMMV40K

96 in - 8 000LM

LITCSSL968000LMMV40K



Fluorescent Surface Fixture

4 ft - 120V / 277V, 2 x F32T8
(lamps not included)

LITC232MV

LED Projector

3 000 / 4 000 / 5 000K, die cast
aluminium housing, integrated
selectable photocell, bronze finish

120 / 277V - Knuckle mount

17W, 2 500LM

Replace 150W, halogen or 70W, HID

LITESXF1POSWW2THKDD

120 / 277V - Knuckle or yoke mount

9 / 19 / 34W, 1 500 to 5 000LM

Replace 500W, halogen or 150W, HID

LITESXF1ALOSWW2KYDD

22 / 37 / 56W, 3 500 to 7 500LM

Replace 500W, halogen or 175W, HID

LITESXF2ALOSWW2KYDD

120 / 347V - Yoke or slip fitter mount

53 / 69 / 100W, 8 500 to 14 000LM

Replaces 250W, HID

LITESXF3ALOSWW2UVOLTYSD

111 / 124 / 150W, 16 000 to 20 000LM

Replaces 400W, HID

LITESXF4ALOSWW2UVOLTYSD



Full Cut Off LED Wall Pack

120 / 277V, 4 lumen outputs from 850
to 1 650LM, CCT (3 000 / 4 000 / 5 000K),
photocell (on / off) selectable, bronze finish.

LITWPX0LEDALOSWW2MVPEDDB

STANPRO



Pack of 3

Under-Cabinet LED Puck Lights

2.2W, 12V, 3 000K, 150LM, 120° beam, dimmable,
frosted lens, recessed or surface mount installation,
plug-in transformer (12W, 12V) included, white.

LUMLUUCPKIT312V22W3KFRWH



Suitable
for wet
location

LED Surface Mount Ceiling Fixture

7 in - 14W, 120V, 4 000K 1 000LM, with motion detector
(passive infrared), frosted polycarbonate lens, steel
housing, non-dimmable, white.

Replace 75W, incandescent

STACLDKMS7R14WA40WH



Suitable
for wet
location

LED Surface Mount Ceiling Fixture

120V, 5CCT (2 700 / 3 000 / 3 500 / 4 000 / 5 000K),
dimmable, round.

4 in - 8W, 580LM

Replaces up to 60W, incandescent

STACLDK4R8WA5CWH

6 in - 15W, 1 000LM

Replaces up to 75W, incandescent

STACLDK6R15WA5CWH



Under-Cabinet LED Fixture

120V, 2 700 / 3 000 / 4 000K, 120° beam,
dimmable, frosted lens, pivoting light source.

12 in - 5W, 330LM

LUMLUUCS12IN120V5WSELFR

18 in - 8W, 530LM

LUMLUUCS18IN120V8WSELFR

24 in - 12W, 800LM

LUMLUUCS24IN120V12WSELFR

32 in - 16W, 1 060LM

LUMLUUCS32IN120V16WSELFR



LED EDGELIT Surface Fixture

120V, 3 000K, white trim

6 in - 11W, 855LM

STALEDCLE6EDG11W3KFMRNDWH

8 in - 14W, 1 066LM

STALEDCLE8EDG14W3KFMRNDWH

12 in - 22W, 1 647LM

STALEDCLE12EDG22W3KFMRNDW



LED Wall Pack

120 / 347V, 3 000 / 4 000 / 5 000K, dimmable 0 / 10V,
photocell included, prismatic glass lens, bronze finish.

25 / 30 / 40W

STAWSPSPS40Q3C

60 / 80 / 100W

STAWSPSPS100Q3C

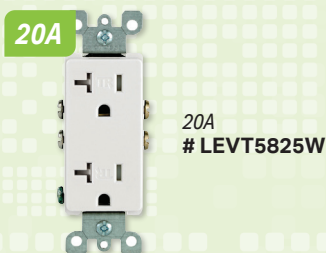
120W

STAWSPSNS120Q3C



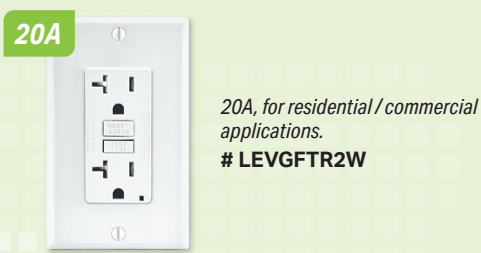
Tamper Resistant Duplex Receptacle

120V, white



GFI Receptacle

125V, tamper resistant, self-test SmartlockPro GFCI, monochromatic, back and side wired, white. Nylon wallplate, screws and self-grounding clip included.



Noalox® Anti-Oxydant

8 oz. squeeze bottle
IDE30030



Aqua-Gel Cable Pulling Lubricant

1-quart squeeze bottle. Temperature rating -33°C, for exterior use in cold weather.
IDE31298



40 circuit panel including arc fault circuit breaker

SIEKITXP40200Q



Breaker

1P, 10kA, 15A, single pole, combination arc fault (AFCI)
QA115AFCCSA



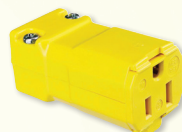
Panel*

240V, 200A, 40 circuits, single phase main breaker
XP40200Q
*While supplies last.



Valise Plug

15A, 125V, 2P, 3 wires.
HUBHBL5965VY



Valise Connector Body

15A, 125V, 2P, 3 wires.
HUBHBL5969VY

Circuit-Lock® Enclosure



30A - 3P, 600V, NEMA 3

HUBHBL13R89D



60A - 3P, 600V, NEMA 3

HUBHBL16R93D



30A - 3P, 600V, NEMA 1, with switch

HUBHBL1379

**STAR
TECK****NEW!****STAR
TECK**

A natural extension to the Star Teck family, the Star Teck ST90 series for Teck and jacketed armored cables offers innovative design that sets the standard for ease of installation, quality engineering, and for safe and reliable cable termination in challenging industrial environments.

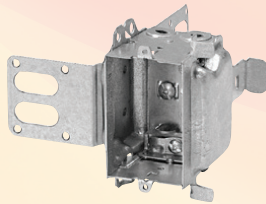
**90° Fitting**

1/2 in - 0.600 - 0.760
THOST90050464
1/2 in - 0.750 - 0.985
THOST90050466
3/4 in - 0.950 - 1.205
THOST90075468
1 in - 1.180 - 1.375
THOST90100469

**Straight Fitting**

1/2 in - 0.525 - 0.650
THOST050462
1/2 in - 0.600 - 0.760
THOST050464
1/2 in - 0.725 - 0.885
THOST050465

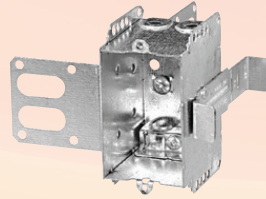
1/2 in - 0.825 - 0.985
THOST050466
3/4 in - 0.880 - 1.065
THOST075467
3/4 in - 1.025 - 1.205
THOST075468
1 in - 1.187 - 1.375
THOST100469

Iberville^{MD}**Steel Stud with Integral Support Bracket**

Gangable, 16 cu. in
3 x 2 x 2-1/2 in

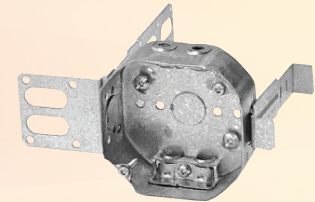
With universal connector
IBE3104LSSX

With connector for armored
and standard cable
IBE3104LSSAX



Non-gangable, 12.5 cu. in
3 x 2 x 2-1/2 in

With connector for armored
and standard cable
IBE2104LSSAX



Octagonal Box, 15 cu. in
4 x 4 x 1-1/2 in

With connector for armored
and standard cable
IBE54151LSSAX

°STELPRO**WALL FAN HEATER - RWF**

STERWF1002W 1000 W
STERWF1502W 1500 W
STERWF2002W 2000 W
STERWFT1W Built-in thermostat
STERWFSAW Surface adapter

**COMMERCIAL AND RESIDENTIAL UNIT HEATER - RUH****Without thermostat**

STERUH4CHAR 4000WCharcoal
STERUH5CHAR 5000WCharcoal

Built-in thermostat

STERUH4TCHAR 4000WCharcoal
STERUH5TCHAR 5000WCharcoal



STELPRO.COM 1-844-STELPRO

**Fiberglass
Step Ladder**

Rated ANSI Type IA, load capacity
of 300 lb, equipped with magnet
and multiple tool slots.

6 ft # LOUFS1506
8 ft # LOUFS1508

**Fiberglass
Cross Step Ladder**

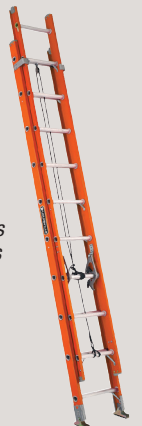
Rated ANSI Type IA, load capacity of 300 lb.
PRO-TOP system: V-shape Pro Top allows
the ladder to lean against walls, buildings
and poles. Magnet tray, raptor booth with
slip-resistant.

6 ft # LOUFXS1506
8 ft # LOUFXS1508

**Fiberglass
Extension Ladder**

Rated ANSI Type IA, load capacity
of 300 lb, equipped with the
MAXLOCK rung lock, also includes
a QuickLatch system that secures
the ladder when extended.

24 ft # LOUFE3224
28 ft # LOUFE3228





Telescoping Magnetic Pick Up Tool with LED Light
22 in - 25LM, IP54. Powerful magnetic head with 2 lb (0.9 kg) pickup strength.
KLE56027



Cable Cutter
Cuts 4/0 aluminum, 2/0 soft copper, 100-pair 24 AWG communications cable. Has a jaw capacity of 1-1/16 in (2.7 cm).
KLE63050



Tradesman Pro™ Tool Master Tool Bag Backpack
19-1/2 in - 48 pockets. Made of durable water resistant 1680d ballistic weave material and a molded bottom to help protect from the elements.
KLE55485



Digital Circuit Breaker Finder
With GFCI outlet tester. CAT II 120V safety rating. Includes: transmitter, receiver and 9V battery.
KLEET310



Electrician Bag / Belt Combo
Medium (31"-34")
RAC43242
Large (35"-39")
RAC43243



Double Ended Robertson
#1 & #2
4 in # RAC70214RG
6 in # RAC70216RG



Heavy-Duty Hack Saw
12 in - Over-molded rugged design for heavy-duty use and comfort, fully adjustable blade tension up to 30 000 psi for longer blade life and faster, accurate cuts.
GRE333A



Nail Eater® Extreme
18 in made of super tough, heat-treated steel, cuts through nails and provides longer life.
5/8 in # GRE66PT5/8
3/4 in # GRE66PT3/4
13/16 in # GRE66PT13/16
7/8 in # GRE66PT7/8



OPEN-LOK™ Metal Cutting Multi-Tool Blade
3-piece variety pack (1-1/8, 1-3/4, 1-3/8).
MIL49109006



Wood and Metal Cutting Bi-Metal Reciprocating Saw Blade Set (10-Piece)
MIL49223310



Universal Flat Boring Bit Set
6 in - 8 pieces
MIL49220175



M18™ Wet / Dry Vacuum
2 gallon capacity. Includes: 6' flexible hose, crevice tool, utility nozzle and HEPA filter. Battery and charger not included.
MIL088020

3M

E-A-R™ Classic™ Earplugs

Uncorded, NRR 29 dB,
Pillow Pack

Pack of 200
3MS3101001



E-A-R Soft™ Yellow Neons™ Earplugs

Uncorded, pliable foam offers
comfortable extended wear, regular size
fits most ear canals, NRR 33 dB.

Pack of 200
3MS3121250



Over-the-Head Peltor™ Earmuffs

Lightweight and lower-profile
earmuffs, NRR 27 dB.

3MSX4A



SecureFit™ Protective Eyewear

Anti-fog lens, protects against Ultraviolet (UV)
radiation. Adjustable nose pads and soft-touch temple
inlays provide increased comfort and improved grip.
CSA Z94.3 certified

Clear lens # 3MSSF401AF
Gray lens # 3MSSF402AF



Peltor™ Cap-Mounted Earmuffs

25dB attenuation. Listen-through capability with
the pass-through sound limited to 87 dB.

3MSH7P3E

BRADY®

B-500 Wire Marker Cards

36 numerical legends per card,
black on white background, vinyl cloth.

0 # BRAWM0	5 # BRAWM5
1 # BRAWM1	6 # BRAWM6
2 # BRAWM2	7 # BRAWM7
3 # BRAWM3	8 # BRAWM8
4 # BRAWM4	9 # BRAWM9



Safety Padlocks

Lightweight, non-conductive and non-sparking body.
Fiberglass reinforced nylon body and triple-coated
hardened steel shackle. Shackle clearance 1-1/2".

Green	# BRA99564
Red	# BRA99552
Yellow	# BRA99570
Blue	# BRA99556



Handy Mat

8 x 16 in - Designed for kneeling in
cold / hard, steel, concrete, grating,
gravel, wet surfaces, dirt / mud.
Impervious to petroleum products.

IMPMAT5040



Hi-Viz Drop Shoulder Safety Tear-Away Vest

Tricot polyester interlock, CSA Z96-15.
Class 2, Level 2.

Small / Medium
PIOV1020951S/M
Large / X-Large
PIOV1020951L/XL



Liquid Hand Sanitizer

70 % alcohol, 350 ml

WALFLSANIH70350ML



Truck First-Aid Kit

16 units, plastic box

DYNFAKTBP



Lined Split Cowhide Fitter

Cotton backhand w/ split leather knuckle
strap, C100 Thinsulate™ insulation.
Size Large.

The pair # BOB309473TFL

rve



ELECTRIC VEHICLE ENERGY MANAGEMENT SYSTEM

Ask your branch representative for more information
about the DCC product line and its availability.

DCC-9

Allows the connection of a charger
to a fully loaded electrical panel
with a main power supply of 125A
or under.

DCC-11

Allows the connection of a charger
to a fully loaded electrical panel
with a main power supply of more
than 125A (150A or 200A).

DCC-10

Allows the connection of a charger
to a new branch-circuit of a panel
without affecting the load calcula-
tion when breaker spaces are
available.



Download the Lumen app!



Place your orders directly
online at lumen.ca or via
the Lumen app.



Two branches to better serve Atlantic Canada!

DARTMOUTH

121, Ilsley Avenue, unit 119, Dartmouth (NS), B3B 1S4
Tel. : 902 468-7996 / Fax : 902 468-7997
Toll free : 1 844 516-0158

MONCTON

1070, St-George Blvd., unit 1A, Moncton (NB), E1E 4K7
Tel. : 506 382-1396 / Fax : 506 382-9376
Toll free : 1 844 311-1396

Lumen
A Sonepar Company

Prices are subject to change without notice. All images are for illustrative purposes only. Air Miles program is reserved to the Electrical Contractor ESA or ECA members only. We are currently experiencing an exceptionally high demand for many popular products. As a result, some products advertised in this flyer may not be available. Please check your local branch for availability or visit lumen.ca. We are currently working on replenishing supplies as quickly as possible and apologize for any inconvenience this may cause.

