



ATLANTIC

Special deals
May-June
2022



Valid for Electrical Contractors
ESA and ECA members only



Ty-Rap® 2022 Promo
Get your backpack today!

**It's a promotion.
It's a backpack cooler.
It's a seat.**

Two options are available:

THOTYBACKPACKMX

Weather and UV-resistant cable ties

- TY25MX — 1,000
- TY27MX — 1,000

THOTYBACKPACKM

Cable ties for indoor applications

- TY25M — 1,000
- TY27M — 500



SIEMENS EQL LOADCENTRES
Single phase - Main lug 120 / 240V



120/240V, 125A, NEMA 1, gray

16/32 circuits
SIEEQL16125D

24/48 circuits
SIEEQL24125D



120/240V, 125A, NEMA 1, white

24/48 circuits
SIEEQL24125DW

LIGHTOLIER

by @ignify



LED Recessed Fixture

In stock at all branches

3 in - 8W, 120V, 3 000K, 550LM, regressed, large beam, junction box included, white.

Replaces 50W, halogen
LIGMD3R069301FW

LIGHTOLIER

by @ignify



LED Recessed Fixture

In stock at all branches

3 in - 8W, 120V, 3 000K, 550LM, gimbal, narrow beam, junction box included.

Replaces 50W, halogen

Matte white # LIGMG3R06930NF1W
Matte black # LIGMG3R06930NF1B
Brushed nickel # LIGMG3R06930NF1N

Day-Brite

CFI

by @ignify



LED T-Bar Fixture

120V / 227V, 4 000K, dimmable 0/10V, ribbed acrylic diffuser.

2 x 2 - 3 800LM
CF12FGG38B8402DUNVDIM

2 x 4 - 4 200LM
CF12FGG42B8404DUNVDIM

KEENE

by @ignify

LED Projector

In stock at all branches

120/277V, 4 000K, bronze finish

Knuckle or yoke mount

10W, 1 100LM

Replaces 150W, quartz

KEETF10NWG1KFL8BZ

30W, 3 250LM

Replaces 150W, HID

KEETF30NWG1KFL8BZ

50W, 5 500LM

Replaces 150W, HID

KEETF50NWG1KFL8BZ



KEENE

by @ignify



LED Wall Pack

40W, 120V, 4 000K, 4 973LM, gray, photocell included, wall mount, mounted to vertical surfaces or mounted onto 1-1/2" O.D. arms (not included).

Replaces up to 150W, HID

KEEDTD40NWG3AR5TLRPC1GY3

Day-Brite

CFI

by @ignify



LED High Bay Fixture

120/347V, adjustable CCT (4 000/5 000K), open hook, 6 ft cord, dimmable 0/10V, polycarbonate lens.

14 000LM
CF1HCY14L8CSTUN3DIM

28 000LM
CF1HCY28L8CSTUN3DIM

STANPRO



LED Wraparound Surface Fixture

In stock at all branches

120/277V, 4 000K, frosted polycarbonate lens.

2 ft - 27W, 2 878LM, replaces 1 x 32W, T8

Interconnectable up to 15 units

STAL2WMG241

4 ft - 47W, 5 043LM, replaces 2 x 32W, T8

Interconnectable up to 8 units

STAL2WMG481



LED Surface Fixture

4 ft - 3 500/4 000/5 000K, dimmable 0/10V, IP66, NSF, NEMA 4X, polycarbonate lens, stainless steel clips, V hook included.

42W, 120/277V, 5 450LM

STAVTL4LS3W3C

67W, 120/277V, 8 560LM

STAVTL4LS4W3C



Suitable for wet locations

LED Ceiling Fixture

In stock at all branches

120V, 5 CCT (2 700/3 000/3 500/4 000/5 000K), dimmable, round.

4 in - 8W, 580LM

Replaces up to 60W, incandescent

STACLDK4R8WA5CW

6 in - 15W, 1 000LM

Replaces up to 75W, incandescent

STACLDK6R15WA5CW

NEW!

LED Projector

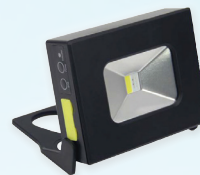
120/277V, 3 000/4 000/5 000K, cast aluminium housing, yoke mount, polycarbonate lens, bronze finish.

50/80/100/150W, 6 800 to 19 200LM

STAKITFLBMPS150MW3CBRETR

150/200/240/300W, 22 400 to 38 000LM

STAKITFLBXP300MW3CBRETR



Mini Portable LED Projector

10W, 100/240V, 450LM, 120° beam, lithium-ion 3.7V 2Ah battery working time is 2 hours (100%) or 4 hours (energy saving mode), 2 intensity switch, flashing switch, magnetic handle, black housing.

STAMFLBTRYMG10024010WCW

LED Panel for Suspended Ceiling

In stock at all branches

120/347V, 3 500/4 000/5 000K, dimmable 0/10V.

2 x 2 - 20/30/40W

STAL3PNB2LPSQ3C

2 x 4 - 30/40/50W

STAL3PNB4LPSQ3C



LED Projector

20W, 120V, 4 000K, 1 770LM, bronze, photocell included.
Replaces 150W, PAR38 incandescent
LITOVFLLED2RH40K120PEDB



LED Projector

NEW!

In stock at all branches
120V, adjustable wattage (21W, 2 150LM / 26W, 2 600LM) and CCT (3 000 / 4 000 / 5 000K), with motion sensor and photocell, wall mount.
White # LITHGXLED2RHALOSWW120PIW
Bronze # LITHGXLED2RHALOSWW120PID



LED Striplight

In stock at all branches
120/277V, 4 000K, non-dimmable.
48 in - 4 500LM
Replaces 2 x 32W, T8
LITMNSLL482LLMVGZN40K
96 in - 8 200LM
Replaces 4 x 32W, T8
LITMNSLL962LLMVGZN40K



LED Wall Pack

In stock at all branches
120/277V, 4 000K, bronze finish
22W, 2 950LM, photocell included
Replaces 100W, MH
LITTWX1LEDP240KMPEDDB
54W, adjustable output 1 450 to 6 950LM
Replaces 70W to 250W, MH
LITTWX2LEDAL040KMVDDDB
108W, adjustable output 2 900 to 13 850LM
Replaces 100W to 400W, MH
LITTWX3LEDAL040KMVDDDB



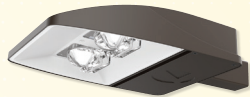
LED Full Cut Off Wall Pack

3 000K, 120/277V, bronze finish
24W, 2 900LM
Replaces up to 150W, MH
LITWPX1LEDP230KMVDDDBXD
47W, 6 000LM
Replaces up to 250W, MH
LITWPX2LED30KMVDDDBXD
69W, 9 200LM
Replaces up to 400W, MH
LITWPX3LED30KMVDDDBXD



High Bay LED Fixture

In stock at all branches
4 000K, dimmable 0/10V, 6 ft cord, hook, glass lens, 120° beam, white housing.
Replaces up to 400W, HID or 6 fluorescents, T5HO
120/277V, 18 000LM
LITJEBL18L40K80CRIWH
347V, 18 000LM
LITJEBL18LHV40K80CRIWH
Replaces up to 400W, HID or 8 fluorescents, T5HO
120/277V, 24 000LM
LITJEBL24L40K80CRIWH
347V, 24 000LM
LITJEBL24LHV40K80CRIWH



Area Fixture

120/277V, 4 000K, adjustable output, type 3 distribution, universal mounting bracket (round or square post 3-1/2" minimum), bronze finish.
50W/8 000LM or 98W/14 000LM
Replaces up to 250W, HID
LITESX1LEDP240KR3MVPADB
146W/21 000LM or 190W/25 000LM
Replaces up to 400W, HID
LITESX1LEDP440KR3MVPADB



LED Recessed Fixture

In stock at all branches
120V, 5 CCT 2 700K to 5 000K, 670LM, white
4 in - 9W, 670LM
Replaces up to 65W, incandescent
JUNWF4SWW590CRIMW
6 in - 13W, 950LM
Replaces 75W, incandescent
JUNWF6SWW590CRIMW



LED Recessed Fixture

In stock at all branches
120V, 5 CCT 2 700 to 5 000K, dimmable, regressed lens and deflector designed to reduce glare, white.
4 in - 9W, 670LM
Replaces 65W, incandescent
JUNWF4REGSWW590CRMW
6 in - 13W, 950LM
Replaces 75W, incandescent
JUNWF6REGSWW590CRIMW



SUNNATA SERIES

NEW!



Dimmer

White, rated load 150W (LED), 600W (incandescent/halogen).
Wallplate not included.
LUTSTCL153MHWHC

NEW!



Dimmer Pro

White, rated load 250W (LED), 500W (incandescent/halogen), 400VA (MLV), 500W (ELV). Wallplate not included.
LUTSTPRONWH



Caseta Wireless Outdoor Smart Plug

120V, 15A (lighting load) or 1/2HP (motor and pump load), IP65 certified rating, perfect for controlling outdoor lighting or pump motor from your phone or Caseta wireless control (Pico).
LUTPD150UTBL

3 New Ductless Heat Pumps

Capella 16
Single Zone



Capella 28
Single Zone



Capella MZ
Multizone



Performance up to



Up to

16.8 SEER

9.7 HSPF

Performance up to



Up to

28.1 SEER

13 HSPF

Performance up to



Up to

22.5 SEER

11.3 HSPF

Contact a Convector representative for more details. 1 800 463-7043 • www.convectaircanada.com



Ty-Rap™ Cable Tie
0.19 (W) x 7.31 (L) in
Polyamide (nylon 6.6), recommended
for outdoor use. Pack of 100
THOTY525MX

Products necessary to install a heat pump



**Support Racks
for Outdoor Unit**
Aluminum, 26-1/2 x 3-1/4 in,
pack of 2
SUPKITS24926AL



**Expansion Shield
Anchor**
3/8 X 2-1/2 in, pack of 50
VISLSH3/8XLONG



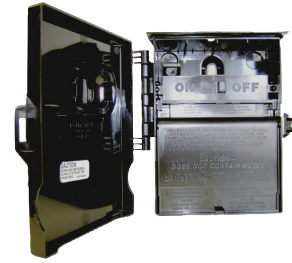
Wall Anchor
1-1/4 in, 20 lb capacity,
pack of 100
POW02371



Non-Fusible "Pull-Out" Disconnect
60A, 120/240V, 1PH, NEMA 3R, metallic
MIDU065P



Non-Automatic Disconnect Switch
60A, 120/240V, 1PH, NEMA 3R, metallic
MIDU065NA1



Non-Automatic Disconnect Switch
60A, 120/240V, 1PH, NEMA 3R
MIDP065NA1

SIEMENS

PANELS & BREAKERS KIT # SIEKITSEQ40150



SEQ Panels
240V, main breaker 150A,
40 circuits
SIESEQ40150

Breakers



SIEQA115AFCCSA



SIEQ115



SIEQ215



SIEQ220

Kit includes

- 2X SIESEQ40150
 - 24X SIEQ115
 - 6X SIEQ215
 - 6X SIEQ220
 - 10X SIEQA115AFCCSA
- # SIEKITSEQ40150**

LEVITON

Receptacle - 250V



Flush mount
30A, 2P, 3 wire, NEMA 6-30R
LEV5372S00



Flush mount
50A, 2P, 3 wire, NEMA 6-50R
LEV5374S00

Receptacle - 125/250V



For oven
50A, 3P, 4 wire, flush mount with
integrated mounting plate, white.
5.5 x 5.43 in
LEV1279S50



For dryer
30A, 3P, 4 wire, flush mount with
integrated mounting plate, white.
5.5 x 5.43 in
LEV1278S30



3-Port Plug

30A, 125/250V, 4 wires

HUBHBL2711



3-Port Connector

30A, 125/250V, 4 wires

HUBHBL2713



Valise Plug

15A, 125V, 2P, 3 wires

HUBHBL5965VY



Valise Connector Body

15A, 125V, 2P, 3 wires

HUBHBL5969VY



Generator Junction Box

Male plug, 30A, 3P, 4 wires

HUB58405



Expandable Cover

1G, horizontal / vertical, extra duty.

Gray # HUBML500GCN

White # HUBML500WCN



Noalox® Anti-Oxydant

8 oz. squeeze bottle

IDE30030



Wire Pulling Lubricant

3.78L (1 gallon) bucket, yellow 77

IDE31351



Cable Splicer's Knife

Special-purpose short blade with textured handle for comfort and firm grip.

KLE44200



Cap Visor with LED Light

Conveniently centered power button controls the light from high to low to off.

KLE56402



Square-Recessed Tip Screwdriver

8 in - #2, round-shank

KLE666

BUY A SCREWDRIVER SET

5 pieces - Flat / Phillips (85075)



5 screwdrivers: 5/16", 1/4", 3/16", 1/4" droit (6.4 mm à 7.9 mm) and #2 Phillips.

KLEKITTOURNEVIS

AND GET A FREE

Multi-Bit 11-in-1

Screwdriver/Nutdriver (32500)*



Saw Keyhole

Pointed tip easily punches through drywall.

GRE301A



Drill / Tap Bit Set

6 Pieces - 6-32 to 1/4-20

GREDTAPKIT



E-A-R™ Classic™ Earplugs

Uncorded, NRR 29 dB, Pillow Pack, pack of 200

3MS3101001



Peltor™ Cap-Mounted Earmuff

25dB attenuation. Listen-through capability with the pass-through sound limited to 87 dB.

3MSH7P3E



SecureFit™ Protective Eyewear

400 series, amber anti-fog lens.

3MSSF403AF



TwistGuard™ Test Leads

CAT II 1000V, CAT III 1000V, CAT IV 600V, 10A max.

FLUTL175



Lightweight Waterproof Suit

2 pieces: hooded jacket and bib pant, fold into storage pouch. CSA Z96-09 Class 1 Level 2. 100% waterproof polyester/PVC.

Large # PIOV1080150L

X-Large # PIOV1080150XL

NEW!



Professional Roofer's Kit

Includes: Grommeted leg harness, reusable roof bracket, 2 ft shock pack lanyard with integral adp rope grab, 50 ft vertical lifeline, and 15-litre waterproof pail.

PIOV8257065



NEW PRODUCTS



Label Printer Kit

Automatic label formatting for wires, over 100 symbols for electricity and Datacom. Ability to create UPC, DataMatrix, and QR codes. Uses the same cartridges as BMP21PLUS. Includes: carrying case, lithium battery and charger. 2-year warranty.

BRAM210KIT



Compact Bluetooth Label Printer Kit

Prints from the Express Labels Bluetooth mobile app. Automatic label formatting for wires, over 14 000 symbols/ 85 fonts/ 22 bar code types (including QR). Uses the same cartridges as BMP21PLUS. Includes: carrying case, lithium battery (integrated), charger, charging power bank, belt clip and magnet. 2-year warranty.

BRAM211KIT



Indoor / Outdoor Vinyl Labels

Adheres to irregular, curved or rough surfaces. Resistant to chemicals, oils and detergents (black on white).

1/2 in

BRAM21500595WT

3/4 in

BRAM21750595WT



Nylon Cloth Label

Wire & cable wraps. Highly pliable to conform to tightly curved surfaces (black on white).

1/2 in

BRAM21500499

3/4 in

BRAM21750499



M210 Label Printer Only

BRAM210



M211 Label Printer Only

BRAM211



► **VACUUM ACCESSORIES**



AIR-TIP™ Conduit Line Puller Kit

Designed for electricians to seal multiple conduit sizes for strong line-pulling suction.

MIL49902024

► **SPECIAL PRICE**



M18™ REDLITHIUM™ XC5.0 Batteries

Two pack, extended capacity.

MIL48111852

► **BUY A VACUUM**

M18 FUEL™ Wet / Dry - 6 Gallons

- M18™ REDLITHIUM™ HIGH OUTPUT™ XC8.0 battery (charger not included)
- Motor head
- 6 gallon tank
- Cart
- High efficiency filter
- Flexible hose 1-7/8" x 9'
- Crevice tool 1-7/8"
- Floor utility nozzle 1-7/8"
- 2 x extension wand 1-7/8"



Many models and accessories available online.

MILKIT091021

► **AND GET A FREE**

Storage Bag for Vacuum Accessories

Top storage area for longer vacuum accessories and enclosed zipper area for smaller pieces. Bottom storage includes adjustable velcro inserts that can be moved to fit a variety of accessories and customize storage needs.



Download the Lumen app!



Place your orders directly online at lumen.ca or via the Lumen app.



Two branches to better serve Atlantic Canada!

DARTMOUTH

121, Ilsey Avenue, unit 119, Dartmouth (NS), B3B 1S4

Tel.: 902 468-7996 / Fax: 902 468-7997

Toll free: 1 844 516-0158

MONCTON

1070, St-George Blvd., unit 1A, Moncton (NB), E1E 4K7

Tel.: 506 382-1396 / Fax: 506 382-9376

Toll free: 1 844 311-1396



A Sonepar Company

Prices are subject to change without notice. All images are for illustrative purposes only. Air Miles program is reserved to the Electrical Contractor ESA or ECA members only. We are currently experiencing an exceptionally high demand for many popular products. As a result, some products advertised in this flyer may not be available. Please check your local branch for availability or visit lumen.ca. We are currently working on replenishing supplies as quickly as possible and apologize for any inconvenience this may cause.

