

# Lumen

A Sonepar Company

ONTARIO

Special deals  
**July - August**  
2023



AIR MILES

Valid for Electrical Contractors  
ECAO and OEL members only



AIR MILES<sup>MC</sup>

Earn  
**DOUBLE\***  
**2X** AIR  
MILES

on all orders  
from July 1<sup>st</sup> to August 31<sup>st</sup>, 2023

Valid for all orders: picked up,  
delivered and projects.

\*Special offer for ECAO and OEL members only.

BMO HAS COMPLETED THE ACQUISITION  
OF AIR MILES LOYALTY INC.'S AIR MILES  
REWARD PROGRAM BUSINESS.

See terms and conditions  
on [Lumen.ca](http://Lumen.ca)



# ABB

## Marrette<sup>®</sup> PRO-BLU<sup>™</sup> 933<sup>™</sup>

Wire connector with ergonomic wing design,  
caliber #22 to #8 AWG, blue.



Jar of 200  
# MAR933JAR200



Jar of 400  
# MAR933JAR400



Jar of 1000  
# MAR933JAR1000



Flip Pack of 10 000  
# MAR933BK



Barrel of 25 000  
# MAR933BAR

# LEVITON



## Decora Switch

15A - 1P, 120V

White # LEV5601P2W  
Black # LEV5601P2E

15A - 3-Way, 120V

White # LEV5603P2W  
Black # LEV5603P2E



## Duplex Receptacle

15A - 120V

White # LEV5325W  
Black # LEV5325E

## Tamper Resistant Duplex Receptacle

15A - 120V

White # LEVT5325W  
Black # LEVT5325E



**Day-Brite**  
**CFI**  
by @ignify

**LED Surface Fixture**

4 ft - 120/277V, 4 000LM, 3 000/3 500/4 000K, wraparound lens et **and occupancy sensor.**  
**Replaces 2 X 32W, T8**

# CFINWL440L8CSTUNVDIMOCC



by @ignify



**LED Wall Pack**

13W, 120V, 1 200LM, 3 000K, photocell included, bronze finish, wall mount with galvanized mounting plate, frosted polycarbonate lens.  
**Replaces up to 70W, HID**

# KEESWLWWG1PCB1BZ



by @ignify



**LED Wall Pack**

12W, 120V, 1 100LM, 3 000K, photocell included, bronze finish, wall mount with galvanized mounting plate, frosted polycarbonate lens.  
**Replaces up to 70W, HID**

# KEELWLWWG2PCB1BZ



by @ignify



**LED Wall Pack**

120/347V, 3 000/4 000/5 000K, integrated selectable photocell, glass lens, die cast aluminium housing, bronze finish.

28/40/60W, 3 860 to 8 160LM

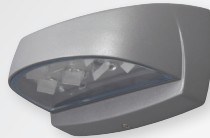
# KEEWP60SCTG210BZ

70/80/90/100W, 9 240 to 13 600LM

# KEEWP100SCTG210BZ



by @ignify



**LED Wall Pack**

10W, 120/277V, 1 050LM, 4 000K  
**Replaces up to 50W, HID**

Titanium finish # KEELPW7G38DGY  
Bronze finish # KEELPW7G38BZ



by @ignify



**LED Wall Pack**

20W, 120/277V, 2 277LM, 4 000K, bronze  
**Replaces 70W, HID**

# KEETW20NWG18BZ

With photocell  
# KEETW20NWG1PCB1BZ



Suitable for damp location

**LED Recessed Fixture**

4 in - 120V, 11W, 750LM, 3 000K, frosted polycarbonate lens, white.

# STALPDL4R11A30WHCHOICE



Suitable for wet location

**LED Recessed Gimbal Fixture**

4 in - 120V, 9W, 750LM, 3 000K, frosted polycarbonate lens, white.

# STASWDL4R9A30WHCHOICE



Suitable for wet location

**LED Surface Mount Ceiling Fixture**

7 in - 20V, 14W, 1 000LM, 4 000K, with motion detector (passive infrared), frosted polycarbonate lens, steel housing, non-dimmable, white.  
**Replaces 75W, incandescent**

# STACLDKMS7R14WA40WH

**NEW!**



**Ceiling Mount Fixture**

120/347V, 40/60/70W, 6 000/7 600/9 000LM, 3 000/4 000/5 000K, frosted polycarbonate lens, bronze finish die cast aluminium housing.

# STAIFOPS70AQ3CBRP

**NEW!**



**Wall Pack**

120/277V, 72/96/120W, 9 485 to 15 680LM, 3 000/4 000/5 000K, polycarbonate lens, photocell, grey finish die cast aluminium housing.

# STAYLDPS120AW3CPT



**LED Compact Projector**

3 000/4 000/5 000K, 120/277V, tempered glass, bronze finish die cast aluminium housing.

15/25W, 2 100/3 500LM

Knuckle mount  
# STAFLMPS25AW3CBRKN

Yoke mount  
# STAFLMPS25AW3CBRYK

35/60W, 4 900/8 400LM, photocell (on / off)

Knuckle mount  
# STAFLMPS60AW3CBRKNP

Yoke mount  
# STAFLMPS60AW3CBRYKP

**NEW!**



### LED Striplight

120 / 277V, 4 000K, frosted acrylic lens.

48 in - 4 000LM

# LITCSSL484000LMMV40K

96 in - 8 000LM

# LITCSSL968000LMMV40K



### LED Striplight

120V, 3 500K, interconnectable up to 18 units, coupler and 18 in cord included, 5 ft cord with plug, toggle switch, polycarbonate lens, white.

23 in - 9W, 940LM

# LITRLNKL2412035K80CRI

47 in - 20W, 1950LM

# LITRLNKL4812035K80CRI



### LED Surface Fixture

4 ft - 34W, 120 / 277V, 5 000LM, IP66, dimmable 0 / 10V, frosted polycarbonate lens, captive polycarbonate latches. Replaces 2 X 32W, T8

4 000K

# LITCSVTL485000LMMV4K80CR

5 000K

# LITCSVTL485000LMMV5K80CR



### LED Surface Fixture

120 / 277V, 4 000K, dimmable, white acrylic lens.

2 ft - 32W, 3 000LM, replaces 1 x 32W, T8

# LITFMLWL24840ZTMVOLT

4 ft - 48W, 4 600LM, replaces 2 x 32W, T8

# LITFMLWL48840ZTMVOLT



Suitable for damp location

### LED Surface Mount Ceiling Fixture

7 in - 12.2W, 120V, 636LM, 3 000K / 4 000K / 5 000K, dimmable, aluminium housing, acrylic lens, for storage room, hallway, office, residential and commercial use.

# LITFMMLS7SWW2



### High Bay LED Fixture

120 / 347V, 4 000 / 5 000K, medium distribution, open hook with 7 ft galvanized safety cable, 6 ft cord, dimmable 0 / 10V, polycarbonate lens.

12 000 / 15 000 / 18 000LM

# LITCPRBALO13UVOLTSWW9DWH

21 000 / 24 000 / 27 000LM

# LITCPRBALO14UVOLTSWW9DWH

With specular reflector



### Fluorescent High Bay Fixture

120 / 277V, with 6 ft flexible cord (lamps not included).

13-1/4" wide - 4 x F54T5HO

# LITIBZT5454MVCS93W

18-1/8" wide - 6 x F54T5HO

# LITIBZT5654MVCS93W



### Recessed Fluorescent T-Bar Fixture

120 / 277V (lamps not included)

1 x 4 ft - 2 x F32T8

# LIT1GT2MV

2 x 4 ft - 4 x F32T8

# LITGT4MV



### Fluorescent High Bay Fixture

120 / 277V (lamps not included)

4 ft - 2 x F54T5HO

# LITZ254T5HOMV

8 ft - Tandem - 4 x F54T5HO

# LITZ254T5HOMV



### Luna Series

120V, 2 700 / 3 000 / 3 500 / 4 000 / 5 000K



Suitable for wet location

### LED Recessed Fixture

Dimmable, 40° beam, white finish

5 or 6 in

17W, 1 150LM

# LITRA5617F90WHWH

20W, 1 435LM

# LITRA5620F90WHWH

33W, 2 330LM

# LITRA5633F90WHWH



Suitable for wet location

### LED Recessed Fixture

12W, adjustable gimbal, diffused mirror reflector

3-1/2 in

White # LITRA3512RG90WH

Black # LITRA3512RG90BK

4 in

White # LITRA412RG90WH

Black # LITRA412RG90BK

3 000 to 2 000K - Warm dim

3-1/2 in

White # LITRA3512RGDTW90WH

Black # LITRA3512RGDTW90BK

4 in

White # LITRA412RGDTW90WH

Black # LITRA412RGDTW90BK





## LANDSCAPE LIGHTING



### LED Path Light Fixture

**Round head - 93° beam**  
20 in tall - 8W, 360LM, 12VAC,  
2200/2700/3000/3500/4000K,  
aluminum construction, ground stake  
included, frosted lens, black finish.

# DALLPP20CCBK



### LED Path Light Fixture

**Lantern head - 147° beam**  
26 in tall - 13W, 800LM, 12VAC,  
2200/2700/3000/3500/4000K,  
aluminum construction, ground stake  
included, frosted lens, black finish.

# DALLPL26CCBK

### LED Projector

12VAC, 2200/2700/3000/3500/4000K,  
180° directional, interchangeable clear lens of  
10°/40°/90°, aluminum housing, ground  
stake included, black finish.

3 in diameter - 10W, 500LM

# DALLSP3CCLBK

4 in diameter - 20W, 1000LM

# DALLSP4CCLBK



### LED Path Light Fixture

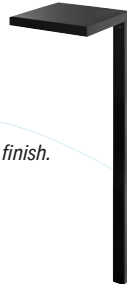
**Rectangular - 109° beam**  
12VAC, 3000K, aluminum construction,  
ground stake included, frosted lens, black finish.

20 in tall - 12W, 600LM

# DALLRB20CCBK

26 in tall - 13W, 700LM

# DALLRB30CCBK



### LED Path Light Fixture

**Square head - 90° beam**  
12 in tall - 3W, 265LM, 12VAC,  
2200/2700/3000/3500/4000K,  
cast aluminium construction, ground  
stake and 21 in extension arm included,  
frosted lens, black finish.

# DALLSQCCBK



### String Lights

48 ft - 15 LED bulbs, 24VDC, 24W, 1200LM, 2200 to  
4000K + RGB, black finish, IP65, plug in driver and on  
wire remote control included, bluetooth technology,  
compatible with Google Assistant and Amazon Alexa  
(pro core driver needed), Dals connect apps required.

# DALDCPSTG48



### LED Steplight Fixture

7-3/4 x 2-1/2 x 3-1/4 in - 120V, 5.2W, 468LM, 3000K,  
die cast aluminium housing and cover, dimmable, **housing  
is the size of a regular brick**, interior and exterior usage.

Aluminium color finish

# MAGLEDBSIIWHLAL

Bronze color finish

# MAGLEDBSIIWHLBZ

Stainless steel finish

# MAGLEDBSIIWHLSS



### Transformer

60W, 120V to 12VAC, with timer, photocell,  
pluggable, plastic housing, black finish.

# LUMLULTRP60BK



### Transformer

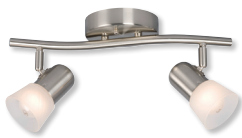
300W, 120V to 12/13/14/15VAC, with  
timer, photocell, metal housing, black finish.

# LUMLULTR300BK

## DECORATIVE LIGHTING

### Rail

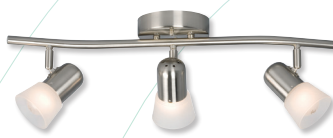
A15/R20, medium base, frosted glass, brushed nickel, lamps not included.



2 x 60W

15 x 5-3/4 x 6-3/8 in

# LUMLU754172BNFR



3 x 60W

23 x 5-3/4 x 6-3/8 in

# LUMLU754173BNFR



### LED Ceiling Mount Fixture

120V, 3000K, round, dimmable, white

5 in - 6W, 450LM

# LUMLU203674A

7 in - 12W, 1000LM

# LUMLU203675A

9 in - 18W, 1500LM

# LUMLU203646A

12 in - 24W, 2100LM

# LUMLU203677A



## THE ENERGY MANAGEMENT SYSTEM FOR EV



### DCC-9

- # RVEDCC930A
- # RVEDCC940A
- # RVEDCC950A
- # RVEDCC960A



### DCC-12

- # RVEDCC12

Applicable taxes not included.

**rve**

**GET BUILDINGS  
EV READY WITH US**

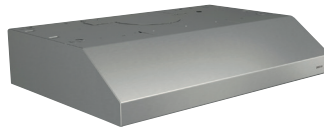
## BROAN



### Economical Range Hood

30 in - 160 CFM, 2 speeds,  
maximum sound level 5 sones.

- White # BROBU230WH
- Black # BROBU230BL
- Stainless steel # BROBU230SS



### Glacier Range Hood

30 in - 250 CFM, superior smoke and odor capture,  
1.5 sones, 2 speeds, 2 levels light, 2 fine mesh filters.

- # BROBCS330SSC



### Glacier Range Hood

30 in - 300 Max Blower CFM, 3 speeds,  
2 levels LED light, maximum sound level 5 sones.

- White # BROBCDA130WW
- Black # BROBCDA130BL
- Stainless steel # BROBCDA130SS



### Compact Central Vacuum Unit

Disposable bag system /  
For 4 000 ft<sup>2</sup> house  
120V, 12A, 66dB, 500 Air Watt,  
29-3/4" height

- # BROBQ550



### Accessories Kit

Includes: 30 ft low voltage hose,  
3 brushes, long crevice tool, telescopic  
wand and a mounting bracket.

- # BROBNAK1



### Mechanical

- 15 ft pool, 5kW  
5 200 gallons, 17 060 BTU / hour  
# VALC55KW
- 18 to 21 ft pool, 10kW  
7 600-10 400 gallons, 34 120 BTU / hour  
# VALC1010KW
- 24 to 27 ft pool, 15kW  
13 500-17 200 gallons, 51 180 BTU / hour  
# VALC1515KW



### Digital

- 15 ft pool, 5kW  
5 200 gallons, 17 060 BTU / hour  
# VALC5KW240DIGIT
- 18 to 21 ft pool, 10kW  
7 600-10 400 gallons, 34 120 BTU / hour  
# VALC10KW240DIGIT

ONTARIO - Effective from July 1<sup>st</sup> to August 31<sup>st</sup> 2023



**lumen**

**5**



**4-Port USB  
Charger Receptacle**  
TYPE A  
4.2A Total charge power 25W  
White  
# LEVUSB4PW  
Black  
# LEVUSB4PE



**Tamper Resistant  
Duplex Receptacle**  
Type A and type C USB ports  
5.1A Total charge power, 25W  
15A - White  
# LEVT5633W  
15A - Black  
# LEVT5633E  
20A - White  
# LEVT5833W  
20A - Black  
# LEVT5833E



**Tamper Resistant  
Duplex Receptacle**  
Dual type A USB port  
3.6A Total charge power, 18W  
15A - White  
# LEVT5632W  
15A - Black  
# LEVT5632E  
20A - White  
# LEVT5832W  
20A - Black  
# LEVT5832E



**Tamper Resistant  
Duplex Receptacle**  
Type C USB ports  
6A Total charge power, 60W  
15A - White  
# LEVT5636W  
15A - Black  
# LEVT5636E  
20A - White  
# LEVT5836W  
20A - Black  
# LEVT5836E



**Tamper Resistant  
Duplex Receptacle**  
Type C USB ports  
6A Total charge power, 30W  
15A - White  
# LEVT5635W  
15A - Black  
# LEVT5635E  
20A - White  
# LEVT5835W  
20A - Black  
# LEVT5835E



**Weather Resistant  
Duplex Receptacle**  
Type A and type C USB ports  
5.1A Total charge power, 25W  
15A - White  
# LEVW5633W  
20A - White  
# LEVW5833W



**Starter Kit**  
Including cable length counter.  
1/16 in - KL75 for cable WC2  
# RIZ30398/KL75SK  
3/32 in - KL100 for cable WC3  
# RIZ30394/KL100SK



**Y Toggle Kit**  
Two 10 ft cables and two KL 75 cable locks (Kwik-Loc). Designed to hang fluorescents and other lighting products.  
# RIZ30202/RWC2YP10K



**RWC2 Cable**  
500 ft - Aviation cable roll, 1/16" diameter, galvanized steel, 7x7 construction.  
# RIZ30380/RWC2

**SKYLARK  
SERIES**



**Dimmer**  
Compatible with : LED, incandescent, halogen, CFL, single and 3-way, white. Wallplate not included.  
# LUTCTCL153PWH

**DIVA  
SERIES**



**Dimmer**  
Compatible with : LED, incandescent, halogen, CFL, single and 3-way, white. Wallplate not included.  
# LUTDVCL153PHWHC

**MAESTRO  
SERIES**



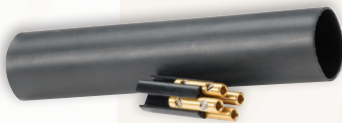
**Dimmer**  
120V, 600W incandescent or halogen, 150W LED or CFL, single and 3-way, white. Wallplate not included.  
# LUTMACL153MHWHC





### Compression Wire Joints for Copper Conductors

Product Code	Cable Combinations		Color
	Minimum	Maximum	
# THO54610	3 #12 mas. or tor.	2 #10 w/ 1 #12 mas. or tor.	Blue
# THO54615	3 #10 mas. or tor.	4 #10 mas. or tor.	Grey
# THO54620	3 #8 mas. or tor.	1 #4 w/ 2 #10 mas. or tor.	Brown
# THO54625TB	4 #8 mas. or tor.	1 #2 w/ 2 #12 mas. or tor.	Green
# THO54630	4 #2 mas. or tor.	2 #4 w/ 1 #10 mas. or tor.	Pink
# THO54635	6 #8 tor.	2 #4 w/ 2 #10 mas. or tor.	Black
# THO54640	3 #4 mas. or tor.	3 #4 w/ 2 #10 mas. or tor.	Orange
# THO54645TB	4 #4 mas. or tor.	2 #1 w/ 2 #10 mas. or tor.	Purple
# THO54650	3 #2 tor.	2 #10 w/ 2 #8 tor.	Yellow



#### Direct Burial Splice Kit

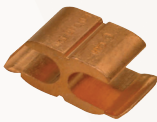
**Cable repair kit** - For 14-8 AWG conductor sizes.  
**Includes:** heat-shrinkable insulating tube filled with adhesive to cover the splice and ensure water and weather tightness.

# BLAUFK148DB



#### Galvanized Ground Plate with JAB

# BLA1016BTB



#### Type H Compression Connector

For tapping copper conductors to unbroken main copper conductors, efficient design for lower crimping force, standard compression tools and dies.

# BLACF441



#### Copper Lay-In Lug Connector

Open-faced design enables installer to quickly lay-in grounding conductor as jumper to multiple conduits without breaking, ideal for swimming pool grounding applications, carries "DB" marking for direct burial.

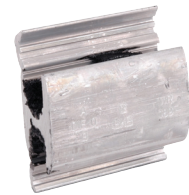
# BLACULL414TP



#### Insulation Piercing Connector

**Residential service entrance 200A and less.**  
Bolt head size: 1/2 in. Conductor range: main 250MCM @ 1AWG, tap 4AWG @ 4/0. As per Z462 and Z801 Standards.

# TROTTD2610XFBTA



#### H-Tap Compression Connector

1@6 & 1@6 AL&Cu

# BLAWR159



#### Ground Rod Copper Plated

99.9% pure electrolytic copper coating.

3/4 in X 10 ft copper / steel

# ERH613400

5/8 in X 10 ft copper / steel

# ERH615800



Cal. #8 - #2, diameter : 0.17 - 0.41 in  
16 in # RAYWCSM1641200S

Cal. #6 - #4/0, diameter : 0.25 - 0.64 in  
24 in # RAYWCSM2461200S

Cal. #2 - 500 MCM, diameter : 0.35 - 0.94 in  
34 in # RAYWCSM3481200S

Cal. #2/0 - 750 MCM, diameter : 0.51 - 1.12 in  
48 in # RAYWCSM48121200S

Cal. 250 - 1000 MCM, diameter : 0.68 - 1.27 in  
56 in # RAYWCSM56161200S

Cal. 500 - 1500 MCM, diameter : 0.90 - 1.40 in  
70 in # RAYWCSM70201200S

#### 1000 V Heat-Shrink Tubing







### F-Series Boxes - Single Gang



1/2 in  
# SCEFS10  
3/4 in  
# SCEFS15



1/2 in  
# SCEFSC10  
3/4 in  
# SCEFSC15

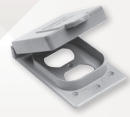
### Weatherproof Covers - Single Gang



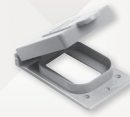
Toggle switch cover  
# SCEVSC1510



Plunger style switch  
# SCEVPT1510



Duplex receptacle  
# SCEWDR1510



Ground fault receptacle  
# SCEWGF1510

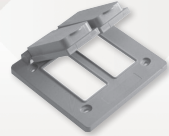
### Weatherproof Covers - Double Gang



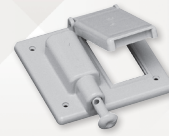
Toggle switch cover  
# SCEVSCU202



Double door duplex cover  
# SCEVSDD202



Double door GFCI cover  
# SCEVSGG202



Combination switch cover & GFI receptacle  
# SCEVSRUCU202

### F-Series Universal Boxes - Double Gang



No opening  
# SCEFDU2



1/2, 3/4 and 1 in  
# SCEFSU2101520



1/2, 3/4 and 1 in  
# SCEFSCU2101520



1/2, 3/4 and 1 in  
# SCEFSSU2101520



**NEW VERSION!**

### Twist-Locks Edge Connect

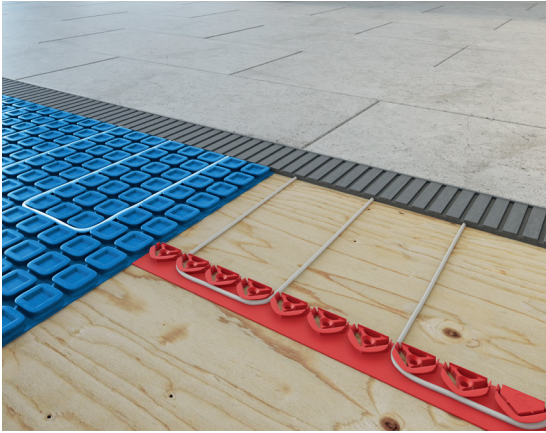
UL / CSA - Twist-Lock® Edge series featuring screwless terminations. Strong levered springs continue to apply pressure as strands relax over time for a reliable connection.



Deck cover for single outlet and GFCI  
13 x 3.25 x 8.5 in

Grey # HUBDOCK320GCN  
White # HUBDOCK320WCN  
Bronze # HUBDOCK320ZCN

	20A, 125V 2P, 3F	20A, 250V 2P, 3F	30A, 125V 2P, 3F	30A, 250V 2P, 3F
	NEMA L5-20P 1 HP	NEMA L6-20P 2 HP	NEMA L5-30P 2 HP	NEMA L6-30P 2 HP
	# HUBHBL2310ST	# HUBHBL2320ST	# HUBHBL2610ST	# HUBHBL2620ST
	# HUBHBL2311ST	# HUBHBL2321ST	# HUBHBL2611ST	# HUBHBL2621ST
	# HUBHBL2313ST	# HUBHBL2323ST	# HUBHBL2613ST	# HUBHBL2623ST



**UNIVERSAL HEATING CABLE\***

**HEATING CABLE ON LATTICE FOR CONCRETE\***

**FLOOR HEATING THERMOSTAT**

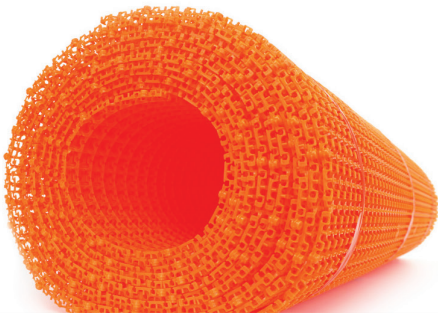
- STESCU2W0270S025
- STESCU2W0338S030
- STESCU2W0405S036
- STESCU2W0475S042
- STESCU2W0540S047
- STESCU2W0675S058

- STESECM2W0300S025
- STESECM2W0400S033
- STESECM2W0500S042
- STESECM2W0600S050
- STESECM2W0750S063
- STESECM2W0850S071

- Single Programming**  
STESTCPW5
- Multiple Programming**  
STESTCPW5



1-844-STELPRO | WWW.STELPRO.COM



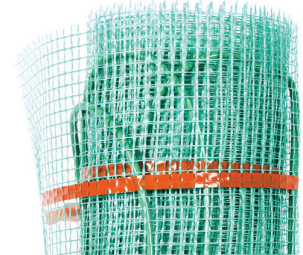
FLOOR HEATING SYSTEM

**FLEXTHERM.**  
your comfort experts **30**

PROUDLY CANADIAN



1 800 353-9843



flextherm.com



## WINDOW AIR CONDITIONER

**MECHANICAL THERMOSTAT**  
WAT-M Series



#CONGJC05BVA6NMNC4B1

**5000  
BTU/HR**

Up to  
**150 sq. ft.**  
(14 sq. m)

**ELECTRONIC THERMOSTAT**  
WAT-BV Series



#CONGJC06BVA6NRNC5B1

**6000  
BTU/HR**

Up to  
**250 sq. ft.**  
(23 sq. m)

BETTER AIR QUALITY - 3-IN-1 • COMPACT AND ECONOMIC • CLASSIC DESIGN • DURABLE

## PATIO INFRARED HEATER

STAY WARM AND COZY ON YOUR TERRACE

**Curved, DSH Series**

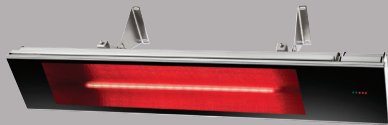
Can be installed on walls, ceilings and floor stands.



240V 2000W #DIMDSH20W

**Ceramic Glass, DIR Series**

Can be installed on walls or ceilings.



120V 1500W #DIMDIR15A10GR  
240V 1800W #DIMDIR18A10GR  
240V 2200W #DIMDIR22A10GR  
240V 3000W #DIMDIR30A10GR

Ideal for restaurants, solariums, spas and hotels.



Contact a Convectair representative for more details.  
1 800 463-7043 • [www.convectaircanada.com](http://www.convectaircanada.com)





**1G Module Frame**

- 2 ports # LEV41642W
- 3 ports # LEV41643W
- 4 ports # LEV41644W



**1G Faceplate**

- 1 port # LEV410801WP
- 3 ports # LEV410803WP
- 4 ports # LEV410804WP
- 6 ports # LEV410806WP



**Surface Mount Box**

- 1 port # LEV410891WP
- 2 ports # LEV410892WP



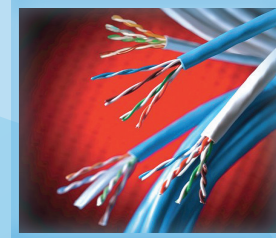
**F-Type Module**

# LEV41084FWF



**Jack Modules CAT 5E**

- White # LEV5G108RW5
- Black # LEV5G108RE5
- Blue # LEV5G108RL5
- Green # LEV5G108RV5



**Network Cable**

CAT 5E U/UTP eXtreme<sup>®</sup> Riser rated FT4  
White # CABLEV5EEXTREMEWHIFT4305

CAT 5E U/UTP eXtreme<sup>®</sup> Riser rated FT4  
Blue # CABLEV5EEXTREMEBLUFT6305

CAT 5E U/UTP HYperplus Plenu Rated FT6  
Blue # CABLEV5EHYPERPBLUFT6305



**Blank Module Connector**

# LEV41084BW



**Lapp Canada, your single source for automation cable, industrial connectors, cable assemblies and accessories.**

- Machinery cable for all types of application (stationary, continuous flexing, and torsional)
- CSA TC FT4 rated cable for tray applications
- VFD & servo cable for all leading manufacturers
- Bus cable and industrial Ethernet cable for signal, network, and control
- Rectangular & circular connectors, cable chain, and protective conduit
- High-quality metallic & non-metallic strain relief cable glands
- Cable management accessories



### M18 TOP-OFF Power Supply

175W. Attach any M18 battery to provide continuous power or recharge devices with AC 120V outlet, USB-C PD port and USB-A port.

# MIL284620



### M18 Jobsite Fan

Circulates air over 40 ft, ideal for drying or cooling. Includes: AC adaptor for extended run-time.\*17 hours with a M18 REDLITHIUM XC 5.0 battery (Battery and charger sold separately).

# MIL088620



### M18 18V Cordless Tire Inflator

Optimized for passenger, light truck, and other medium-duty tires. Rated to deliver max 150PSI (Battery and charger sold separately).

# MIL284820



### M12 Cable Stapler Kit

Coil-spring mechanism sinks the staples to the appropriate depth when fastening loomex NMD 90 (14/2, 14/3, 12/2, 12/3, 10/2, 10/3) and low voltage cables. Only compatible with our 1" insulated staples. Sink up to 1 200 staples on a fully charged M12 CP2.0ah battery. Includes: stapler 2448-20, battery M12 CP2.0 48-11-2420, battery charger 48-59-2401 and carrying bag.

Stapler kit  
# MIL244821

Tool only  
# MIL244820



### Insulated Cable Staples for Stapler 2448

1 in - CUL approved for loomex NMD 90 cable (14/2, 14/3, 12/2, 12/3, 10/2, 10/3) installation.

# MILMNM1600



### Step Drill Bit Set

#1, #4 and #9. Replaces GRE35884

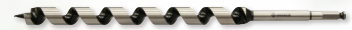
# GREGSBSET3



### Conduit Measuring Tape

3/16 in - 3 000 ft, polyester. Fish and measure conduit runs in one operation. Made of strong, waterproof polyester. Pay-out dispenser has anti-skid pads, handle and built-in cutter.

# GRE435



### Nail Eater® Extreme

18" made of super tough, heat-treated steel, cuts through nails and provides longer life.

5/8 in # GRE66PT5/8  
3/4 in # GRE66PT3/4  
13/16 in # GRE66PT13/16  
7/8 in # GRE66PT7/8



### Carbide Cutter Set

1" ratchet wrench allows use with both 3/8" and 3/4" draw studs. 1/2" to 2" conduit.

# GRE660



### Ultra Cutter Kit

Last 10 times longer than standard hole saws. Includes: 7/8" to 2-1/2" cutters.

# GRE930



### 0.95L Clear Lube Pulling Lubricant

Designed for use within electrical or datacom cable pulls. Environmentally safe, non-hazardous, non-toxic and non-corrosive.

# GRECLRQ

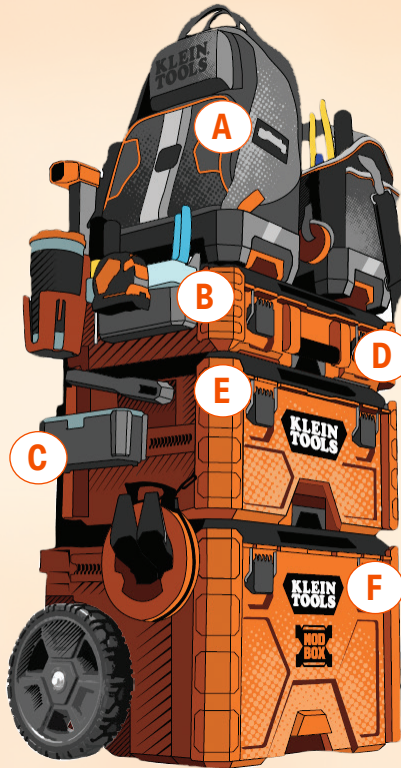




**A Electrician's Backpack**  
 32 pockets for maximum tool and gear storage and includes a spacious interior for large hand tools, steady molded front pocket helps protect items like phones and safety glasses, extra padding on the back extends over the hard bottom for carrying comfort.  
 # KLE62201MB

**B Tool Carrier Rail Attachment**  
 Secure your rail attachments inside the rolling and medium toolboxes. It keeps rail attachments securely in place and prevent shifting inside the toolbox when not in use on the outside rails.  
 # KLE54814MB

**C Parts Bin Rail Attachment**  
 Connects to side rails to keep tool accessible on the worksite. The storage compartment comes with removable dividers for added modularity.  
 # KLE54815MB



**Internal Rail Accessory**  
 Secures all rail attachments inside MODBox™ rolling toolbox and medium toolbox. Use handle side up or down depending on the clearance needed.  
 # KLE54818MB

**D Small Toolbox**  
 22 x 15.5 x 6.6 in - Capacity 75 lb  
 # KLE54804MB

**E Medium Toolbox**  
 22 x 15.5 x 11.7 in - Capacity 100 lb  
 # KLE54803MB

**F Rolling Toolbox**  
 22.6 x 19.88 x 44 in - Capacity 250 lb  
 # KLE54802MB



**Insulated Screwdriver Set**  
 1 000V, with interchangeable blades.  
 Includes : 2 square, 2 Philips, 2 flat  
 # WER003473



**Kraftform Kompakt**  
 Screwdriver with ratchet function.  
 Fine tooth system for precision work.  
 # WER073661



**High Leverage Diagonal Cutters**  
 Precision cutting edges additionally inductionhardened (cutting edge hardness approx. 64 HRC), for all sorts of wire including 1/8" piano wire.  
 # KNI7401250SBA



**CoBolt® Compact Bolt Cutter**  
 10 in  
 # KNI7131200SBA



**STAY HYDRATED WITH SQUINCHER**

**Qwik Stik® ZERO Powder Mix**  
 Electrolyte, sugar free powder  
 Strawberry lemonade  
 # DEN11060453SL

Mixed berry  
 # DEN11060101MB

Fruit punch  
 # DEN11060102FP

Orange  
 # DEN11060100OR



**KWIK PAK™**  
 Four different drinks for a total of 16 drinks.  
 # DEN11QWKPMF





**Label Printer Kit**

Automatic label formatting for wires, over 100 symbols for electricity and Datacom. Ability to create UPC, DataMatrix, and QR codes. Uses the same cartridges as BMP21PLUS. Includes: carrying case, lithium battery and charger. 2-year warranty.

# BRAM210KIT



**Compact Bluetooth Label Printer Kit**

Prints from the Express Labels Bluetooth mobile app. Automatic label formatting for wires, over 14 000 symbols / 85 fonts / 22 bar code types (including QR). Uses the same cartridges as BMP21PLUS. Includes: carrying case, lithium battery (integrated), charger, charging power bank, belt clip and magnet. 2-year warranty.

# BRAM211KIT



**Indoor / Outdoor Vinyl Labels**  
Adheres to irregular, curved or rough surfaces. Resistant to chemicals, oils and detergents (black on white).

1/2 in  
# BRAM21500595WT  
3/4 in  
# BRAM21750595WT



**Nylon Cloth Label**  
Wire & cable wraps. Highly pliable to conform to tightly curved surfaces (black on white).

1/2 in  
# BRAM21500499  
3/4 in  
# BRAM21750499



**M210 Label Printer Only**  
# BRAM210



**M211 Label Printer Only**  
# BRAM211

**FLUKE**



**Non-Contact VoltAlert™ Tester**

Detects from 90 to 1000 VAC, pocket size.

# FLU2AC/901000V



**True-RMS Digital Multimeter**

Cat III, 600V safety rated, 10A AC / DC current measurement (20A overload for 30-seconds max.), LED backlight, min / max / average to record signal fluctuations. Measures resistance, continuity, frequency and capacitance.

# FLU115EFSP



**GFCI Outlet Tester**

Plug it into the outlet. With bright LED and beeping, check wiring status or identify common wiring problems on standard and GFCI outlets.

# FLUST120+



**323 True RMS Clamp Meter**

Features a CAT III 600V, CAT IV 300V safety rating. 400A-600V AC/DC.

# FLU323



**Laser Distance Meter**

Instantly measure up to 131 ft, with 1-button point-and-click. Quickly calculate area (ft<sup>2</sup> / m<sup>2</sup>).

# FLU417D



**Infrared Thermometer 62 MAX**

Large backlit display, supports heat, dust, water and a 3 m drop. Accuracy of +/- 1.5°C.

# FLU62MAX



### Fire Barrier Moldable Putty Pad MPP+

7 x 7 x 1/8 in - Self-adhering pads can be joined together for larger firestop applications.

# TROMPP7X7



### Particulate Respirator N95

Adjustable nose clip reduces potential for eyewear fogging and helps ensure a better deal and fit. Two-strap design with welded dual point attachment, without valve.

# 3MS8210



### Scotchfil™ Electrical Insulation Putty

Use as a build-up compound on highly irregular surfaces such as fittings and valves, providing a smooth, waterproof taping surface. 1.5in X 60in

# TROSCOTCHFIL



### Fire Barrier Moldable Putty Stix MP+

Moldable through penetration firestop with excellent smoke-seal capability.

# TROMPS2



### Fire barrier Self-Locking pillow

2i X 6in X 9in

# TROFBSLP269



### Foam Sweat Bands

With elastic head strap.

# DYNHP65000



### Professional Roofer's Kit

Includes: Grommeted leg harness, reusable roof bracket, 2 ft shock pack lanyard with integral adp rope grab, 50 ft vertical lifeline, and 15-litre waterproof pail.

# PIOV8257065



### Orange Cotton Sweatband for Hard Hat

Innovative air-cushioned foam inner layer for maximum sweat absorption. Hook and loop for universal fit on most hard hats. Reusable and washable. Hat not included.

# PIOV2051370-O/S



### Hard Hat Sun Shade

Orange, one size fits all (hard hat not included).

# PIOV2051450-O/S



Westinghouse

### Portable Generator



120 / 240V, 9 500W, bi-fuel, electric and remote start, up to 17 hours of battery life, CO<sub>2</sub> sensor, 30A Twist-Lock outlet.

# WESWGEN9500DFC



RV and transfer switch ready with 120 / 240V voltage selector. Easily powers sump pumps, AC, refrigerators, well pumps and more. 6 600 peak watts, 5 300 rated watts; up to 14.5 hour run time at 25% load, CO<sub>2</sub> sensor, 30A Twist-Lock outlet.

# WESWGEN5300CV



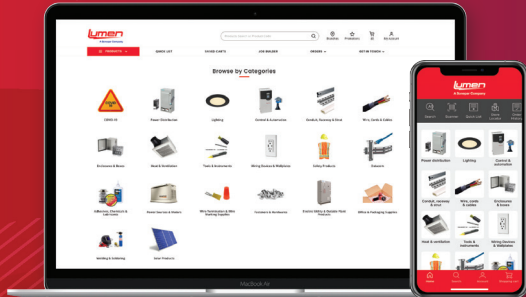
### Home Generator Inlet Box Kit

30A, 125 / 250V

# LEV37830KIT

# ORDER ONLINE 24 / 7

WEB · ERP INTEGRATION · MOBILE



- Access your prices
- View real-time inventory
- Search products by category
- Download product spec sheets

Chat online and make an appointment with our e-Commerce experts.



## PRIORITY PICK-UP FOR ORDERS ALREADY PLACED

Place your order in advance on [lumen.ca](http://lumen.ca) or on the mobile app.

Two branches to better serve Ottawa and Eastern Ontario !

### OTTAWA EAST

1000, Belfast Road, Ottawa (ON) K1G 4A2  
**Tel. :** 613 789-7500 / **Fax :** 613 789-7501  
**Toll free :** 1 855 589-7500

### OTTAWA WEST

1050, Baxter Road, Ottawa (ON) K2C 3P1  
**Tel. :** 613 828-2930 / **Fax :** 613 828-2972  
**Toll free :** 1 888 491-2930



Prices are subject to change without notice. All images are for illustrative purposes only. Air Miles program is reserved to the Electrical Contractor ECAO or OEL members only. We are currently experiencing an exceptionally high demand for many popular products. As a result, some products advertised in this flyer may not be available. Please check your local branch for availability or visit [lumen.ca](http://lumen.ca). We are currently working on replenishing supplies as quickly as possible and apologize for any inconvenience this may cause.

