

Lumen

A Sonepar Company

ONTARIO

Special deals
**January -
February
2023**



AIR MILES

Valid for Electrical Contractors
ECAO and OEL members only



Westinghouse

PORTABLE GENERATOR



120V, 2 200W, inverter motor,
up to 12 hours of battery life.

WESIGEN2200C



120V, 3600W, dual-fuel, electric start,
up to 14 hours of runtime. Includes CO²
and oil level sensor.

WESWGEN3600DFC



120/240V, 9500W, bi-fuel, electric
and remote start, up to 17 hours
of battery life. Includes CO² sensor.

WESWGEN9500DFC

Liteline

LED Recessed Fixture



Suitable
for wet
location

SKYE SERIES

120V, selectable CCT, dimmable, white finish

4 in - 12W, 860LM, 75° beam

LITSLMB412WCCTWH

6 in - 16W, 1 400LM, 80° beam

LITSLMB616WCCTWH



Suitable
for wet
location

LUNA SERIES

2 in - 7W, 120V, 565LM, selectable CCT,
dimmable, 40° beam, white finish

LITRA27F90WH



Suitable
for wet
location

4 in - 8W, 120V, 560LM, dimmable, 5CCT
(2 700 / 3 000K / 3 500 / 4 000 / 5 000K), 3 magnetic
trim (white, black, silver), direct mount on octagonal
junction box or in a existing 4 in recessed can
(for retrofit purpose).

LITSLMT48W

LUTRON.

MAESTRO SERIES



Switch

120V, 2A, 150W LED, 250W incandescent,
with motion detector, for residential use, white.
Wallplate not included.

LUTMSOPS2HWHC

SKYLARK SERIES



Dimmer

Compatible with : LED, incandescent, halogen, CFL,
single and 3-way, white. Wallplate not included.

LUTCTCL153PWH

DIVA SERIES



Dimmer

Compatible with : LED, incandescent, halogen, CFL,
single and 3-way, white. Wallplate not included.

LUTDVCL153PHWHC



Suitable
for wet
location

LED Surface Mount Ceiling Fixture

7 in - 14W, 120V, 4 000K 1 000LM, with motion detector (passive infrared), frosted polycarbonate lens, steel housing, non-dimmable, white.

Replace 75W, incandescent
STACLDKMS7R14WA40WH



Suitable
for wet
location

LED Surface Mount Ceiling Fixture

120V, 5CCT (2 700 / 3 000 / 3 500 / 4 000 / 5 000K), dimmable, round.

4 in - 8W, 580LM
Replaces up to 60W, incandescent
STACLDK4R8WA5CWH

6 in - 15W, 1 000LM
Replaces up to 75W, incandescent
STACLDK6R15WA5CWH



Under-Cabinet LED Fixture

120V, 2 700 / 3 000 / 4 000K, 120° beam, dimmable, frosted lens, pivoting light source.

12 in - 5W, 330LM
LUMLUUCS12IN120V5WSELFRR
18 in - 8W, 530LM
LUMLUUCS18IN120V8WSELFRR
24 in - 12W, 800LM
LUMLUUCS24IN120V12WSELFRR
32 in - 16W, 1 060LM
LUMLUUCS32IN120V16WSELFRR



Under-Cabinet LED Puck Lights

2.2W, 12V, 3 000K, 150LM, 120° beam, dimmable, frosted lens, recessed or surface mount installation, plug-in transformer (12W, 12V) included, white.

LUMLUUCPKIT312V22W3KFRWH



Gimbal LED Recessed Fixture

4 in - 8W, 120V, 3CCT (2 700 / 3 000 / 4 000K), rotates 360° with a maximum angle of 90°, insulated ceiling, dimmable.

Replaces 60W, incandescent
550LM, black
STASWDL4R8A3CBKCHOICE
600LM, white
STASWDL4R8A3CWHCHOICE



LED EDGELIT Surface Fixture

120V, 3 000K, white trim

6 in - 11W, 855LM
STALEDCLE6DG11W3KFMNRNDWH
8 in - 14W, 1 066LM
STALEDCLE8DG14W3KFMNRNDWH
12 in - 22W, 1 647LM
STALEDCLE12DG22W3KFMNRNDWH



LED Projector

120 / 277V, 3 000 / 4 000 / 5 000K, cast aluminum housing, polycarbonate lens, bronze finish.

150 / 200 / 240 / 300W, 22 400 to 38 000LM

1 Bracket mount
STAKITFLBXP300MW3CBRETR

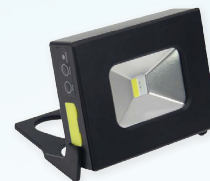
2 Pole mount 2-1/2 in
STAKITFLBXP300MW3CBRPOT



LED Wall Pack

120 / 347V, 3 000 / 4 000 / 5 000K, dimmable 0 / 10V, photocell included, prismatic glass lens, bronze finish.

25 / 30 / 40W
STAWSPS40Q3C
60 / 80 / 100W
STAWSPS100Q3C
120W
STAWPSNS120Q3C



Mini Portable LED Projector

10W, 100 / 240V, 450LM, 120° beam, lithium-ion 3.7V 2Ah battery working time is 2 hours (100%) or 4 hours (energy saving mode), 2 intensity switch, flashing switch, magnetic handle, black housing.

STAMFLBTRYMG10024010WCW

Current



LED Replacement Lamp

Type B, for classified fixtures

45W, 6 000LM, ED17 base
Replaces 100W, HID

120 / 277V, 4 000K
GELLED45ED17740HAZ

120 / 277V, 5 000K
GELLED45ED17750HAZ

80W, 12 000LM, ED23 base
Replaces 250W, HID

120 / 277V, 4 000K
GELLED80ED235740HAZ

120 / 277V, 5 000K
GELLED80ED235750HAZ

80W, 12 000LM, ED23 base
Replaces 250W, HID

277 / 480V, 4 000K
GELLED80ED235740277480HA

277 / 480V, 5 000K
GELLED80ED235750277480HA

150W, 23 500LM, ED28 base
Replaces 400W, HID

277 / 480V, 5 000K
GELLED150ED28750277480HA



LED Striplight

120 / 277V, 4 000K, frosted acrylic lens.

48 in - 4 000LM

LITCSSL484000LMMV40K

96 in - 8 000LM

LITCSSL968000LMMV40K



LED Striplight

120V, 3 500K, white, interconnectable up to 18 units, coupler and 18 in cord included, 5 ft cord with plug, toggle switch, polycarbonate lens.

23 in - 9W, 940LM

LITRLNKL2412035K80CRI

47 in - 20W, 1950LM

LITRLNKL4812035K80CRI



Fluorescent Surface Fixture

4 ft - 2 x F32T8 (lamps not included)

120V / 277V

LITC232MV

347V

LITC232347V



Suitable
for wet
location

Recessed LED Fixture

4 in - 9.6W, 120V, 3 000K, 675LM, dimmable, junction box, approved for daisy chain installation, matte white. **Sold in multiple of 6 only.**

Replaces up to 65W, incandescent

LITWF4LED30KMWM6



LED Wall Pack

14W, 120 / 277V, 4 000K, 500LM, up and down lighting

Replaces 150W, incandescent

White # LITOLLWULEDP140KMVWH

Bronze # LITOLLWULEDP140KMVDDB



Full Cut Off LED Wall Pack

120 / 277V, 4 Lumen output from 850LM to 1 650LM, CCT (3 000 / 4 000 / 5 000K), photocell (on / off) selectable, bronze finish.

LITWPX0LEDALOSWW2MVPEDDB



LED Projector

3 000 / 4 000 / 5 000K, die cast aluminium housing, integrated selectable photocell, bronze finish

120 / 277V - Knuckle mount

17W, 2 500LM

Replaces 150W, halogen or 70W, HID

LITESXF1P0SWW2THKDDB

120 / 277V - Knuckle or yoke mount

9 / 19 / 34W, 1 500 to 5 000LM

Replaces 500W, halogen or 150W, HID

LITESXF1ALOSWW2KYDDB

120 / 277V - Knuckle or yoke mount

22 / 37 / 56W, 3 500 to 7 500LM

Replaces 500W, halogen or 175W, HID

LITESXF2ALOSWW2KYDDB

120 / 347V - Yoke or slip fitter mount

53 / 69 / 100W, 8 500 to 14 000LM

Replaces 250W, HID

LITESXF3ALOSWW2UVOLTYSD

111 / 124 / 150W, 16 000 to 20 000LM

Replaces 400W, HID

LITESXF4ALOSWW2UVOLTYSD

With
spectral
reflector



Fluorescent High Bay Fixture

120 / 277V, with 6 ft flexible cord (lamps not included).

13 - 1/4" wide - 4 x F54T5HO

LITIBZT5454MVC93W

18 - 1/8" wide - 6 x F54T5HO

LITIBZT5654MVC93W



High Bay LED Fixture

120 / 347V, adjustable CCT (4 000 / 5 000K), medium distribution, open hook with 7 ft galvanized safety cable, 6 ft cord, dimmable 0 / 10V, polycarbonate lens.

Adjustable power (12 000 / 15 000 / 18 000LM)

White housing

LITCPBALO13UVOLTSWW9DWH

Black housing

LITCPBALO13UVOLTSWW9DBL

Adjustable power (21 000 / 24 000 / 27 000LM)

White housing

LITCPBALO14UVOLTSWW9DWH

Black housing

LITCPBALO14UVOLTSWW9DBL

PHILIPS

Linear LED Tube

48 in - 14.5W, 120/277V, installation without ballast, dimmable, frosted glass
Replaces 32W, fluorescent

3 500K, 1 750LM # PHI145T8BCP48835MF17G
4 000K, 1 800LM # PHI145T8BCP48840MF18G
5 000K, 1 800LM # PHI145T8BCP48850MF18G



PHILIPS

Linear LED Tube

4 ft - 10W, 100/277/347V, 1 600LM, dimmable, frosted glass
Replaces 32W, fluorescent

4 000K # PHI10T8CORE48840IF16GDIM
5 000K # PHI10T8CORE48850IF16GDIM



PHILIPS

Linear LED Tube

48 in - 24W, 120/277/347V, made of polycarbonate
Replaces 54W, fluorescent

3 500K, 3 300LM # PHI24T5LEDHO483500IF
4 000K, 3 500LM # PHI24T5LEDHO484000IF
5 000K, 3 500LM # PHI24T5LEDHO485000IF



LIGHTOLIER

by @ignify



Ideal for wet location

LED Recessed Fixture

Selectable CCT 2 700 / 3 000 / 4 000 / 5 000K, white trim

4 in - 11W, 700LM
Replaces 65W incandescent lamp
LIGFD4R4CCT

6 in - 13W, 900LM
Replaces 75W incandescent lamp
LIGFD6R4CCT

LIGHTOLIER

by @ignify



Suitable for damp location

LED Recessed Fixture

3 in - 8W, 120V, 3 000K, 550LM, gimbal, narrow beam, junction box included.
Replaces 50W, halogen

Matte white # LIGMG3R06930NF1W
Matte black # LIGMG3R06930NF1B
Brushed nickel # LIGMG3R06930NF1N

KEENE

by @ignify



LED Ceiling Mount Fixture

120/347V, 3 000 / 4 000 / 5 000K, die cast aluminum housing, polycarbonate lens, textured bronze finish.

28 / 40 / 60W, 3 870 to 9 130LM
KEEGCR60SCTG1SM510BZ

70 / 80 / 90W, 9 000 to 13 310LM
KEEGCR90SCTG1SM510BZ

KEENE

by @ignify



LED Wall Pack

20W, 120/277V, 4 000K, 2 277LM, bronze.
Replaces 70W, HID

KEETW20NWG18BZ

With photocell
KEETW20NWG1PCB1BZ

Day-Brite

CFI

by @ignify



Suitable for damp location

LED Strip Fixture

120/347V, selectable CCT (3 500 / 4 000 / 5 000K), dimmable 0 / 10V, frosted acrylic lens, metal housing paint white, safety cable between lens and fixture housing.

4 ft - 2 448LM
CFISDS42448L8CSTUN3DIM

8 ft - 4 998LM
CFISDS84998L8CSTUN3DIM

Day-Brite

CFI

by @ignify



LED Panel for Suspended Ceiling

2 x 4 - Adjustable power 120 / 347V and adjustable CCT 3 500 / 4 000 / 5 000K, dimmable.

CFI2SBP3550L8CS4UN3DIM

RAB



LED Ceiling Fixture IP66

14W, 120/277V, 5 000K, 1 644LM, dimmable 0 / 10V, vapourproof, molded aluminium housing, grey finish, polycarbonate frosted lens.

Replaces 100W, incandescent or 36W CFL
RABDVAKSLED14B5KDGFR



LED Wraparound Fixture

4 ft - 46W, 120/347V, 5 800LM, CCT (3 500 / 4 000 / 5 000K), dimmable, wraparound polycarbonate frosted lens, interconnectable up to 8 units, surface or suspended mounting.

Replaces 2 X F32T8, fluorescent
RABSMW4NLED48HVKWHTDIMFR



Linear Vapourproof LED Fixture IP65

4 ft - Dimmable

120/277V, 4 000K

41W - Replaces 2 X 32W, T8
RABFW4LED41B4KDIM

61W - Replaces 2 X 54W, T5HO
RABFW4LED61B4KDIM

120/347V, adjustable CCT
41W - Replaces 2 X 32W, T8
RABFW4LED41HVKDIM

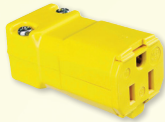
61W - Replaces 2 X 54W, T5HO
RABFW4LED61HVKDIM



Valise Plug

15A, 125V, 2P, 3 wires.

HUBHBL5965VY



Valise Connector Body

15A, 125V, 2P, 3 wires.

HUBHBL5969VY



Circuit-Lock® Unfused Disconnect Switch

30A - 3P, 600V, IP69K, NEMA 4X, industrial grade, non-metallic, NSF certified.

HUBHBLDS3



Circuit-Lock® Unfused Disconnect Switch

With integrated LED indicators

30A - 3P, 600V, IP69K, NEMA 4X, industrial grade, non-metallic, NSF certified.

HUBHBLDS3P



Motor Disconnect

NEMA 4X, 12, commercial grade.

30A, 7.5HP

HUBMD30

60A, 20HP

HUBMD60



30A - 3P, 600V, NEMA 3
HUBHBL13R89D



60A - 3P, 600V, NEMA 3
HUBHBL16R93D



30A - 600V, NEMA 1, with switch

2P # HUBHBL1372D

3P # HUBHBL1379

Circuit-Lock® Enclosure



Powertite Connector

30A, 4P, 3 wires

APPACP3034BC

60A, 4P, 3 wires

APPACP6034BC



Powertite Receptacle

30A, 4P, 3 wires

APPADR3034

60A, 4P, 3 wires

APPADR6034



Aluminum Mounting Box

1 outlet, AE series

3/4 in - For powertite 30A receptacle

APPAEE23

1 in - For powertite 60A receptacle

APPAEE36

dyson

Now available at Lumen

Dyson Purifier Cool™ TP7A

Dyson Cool™ Tower Fan AM07

Dyson V8 Animal



DYSFANAM07BLACK
DYSFANAM07WHITE



DYSPURIFAIRTP7A



DYSV8NICKEL

New EV series

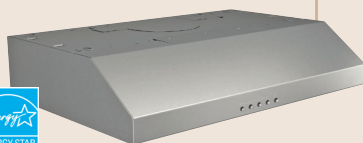
- Available in **32 A** and **48 A**
- Cat. numbers are **EV320** and **EV480**
- Optional access control: drivers can quickly and easily activate their charger by tapping their RFID card on the front of the unit
- For use with any SAE J1772™ compatible electric vehicle
- Cable design prevents cord from freezing and cracking in extreme weather
- For indoor and outdoor use with a thermoplastic, waterresistant enclosure rated NEMA Type 3R
- Dual Mount Pedestal, Front/Back, Cat. number **EPED2**



THE FUTURE IS ON®

LEVITON®

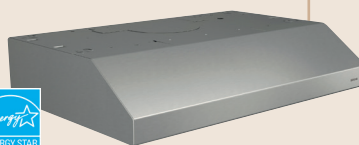
BROAN®



Glacier Range Hood Captur™

30 in - 300 CFM, 2 speeds, heat-resistant LED lighting, maximum sound level 1.5 sones, ENERGY STAR® certified, stainless steel.

BROBCSEK130SS



Glacier Range Hood Captur™

30 in - 300 CFM, superior smoke and odor capture, 1.5 sones, 2 speeds, 2 levels light, 2 fine mesh filters.

BROBCS330SSC

Panasonic

Ceiling Fan with Speed Selector



WhisperValue® DC™ Series

50 / 80 / 110 CFM, 0.3 sones, 3-3/8" housing depth.

PANFV0510VS1



WhisperCeiling® DC™ Series

50 / 80 / 110 CFM, 0.3 sones, integrated dual 4" or 6" diameter duct adapter.

PANFV0511VQ1



Noalox® Anti-Oxydant

8 oz squeeze bottle

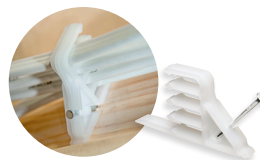
IDE30030



Aqua-Gel Cable Pulling Lubricant

Comes with 1-Quart squeeze bottle. Temperature rating -32 °C.

IDE31298



Cable Stackers

Designed for fast and easy multi-cable installations.

Bag of 25

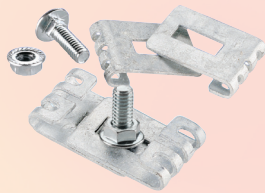
IDEBPSTCKR25

Box of 100

IDEBPSTCKR100

Bucket of 300

IDEBPSTCKR300



Adjustable Splice

Electrogalvanized steel, used to construct angles or bends with a radius.

EXPETHADJSPEG

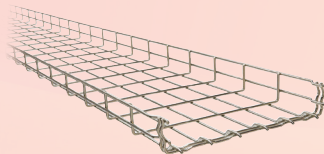


Universal Splice

Electrogalvanized steel, most widely used connection method for non-radiused bends or joints.

EXPETHSPEG

Express Tray Steel Wire Basket Tray



2 in height x 10 ft length

6 in width

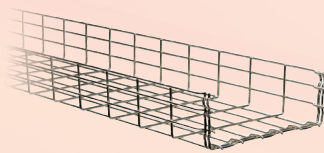
EXPETQ2006SE10

8 in width

EXPETQ2008SE10

12 in width

EXPETQ2012SE10



4 in height x 10 ft length

6 in width

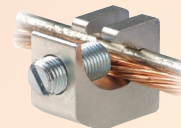
EXPETQ4006SE10

8 in width

EXPETQ4008SE10

12 in width

EXPETQ4012SE10



ExpressTray Ground Lug

- Lay-in lug design easily installs onto any ExpressTray 2 x 4 in deep without any disassembly required
- Approved for steel and stainless steel wire
- Accepts 12 AWG solid through 2 AWG stranded aluminum and 14 AWG solid/stranded through
- Must be used on each length of QuikLok series tray applications to meet CSA requirements

EXPETG24LL214



Standard Bolt Cutter

24 in - For cutting steel wire basket trays.

GREBC24

NEW!

A natural extension to the Star Teck family, the Star Teck ST90 series for Teck and jacketed armored cables offers innovative design that sets the standard for ease of installation, quality engineering, and for safe and reliable cable termination in challenging industrial environments.

**STAR
TECK**



90° Fitting

1/2 in - 0.600 - 0.760

THOST90050464

1/2 in - 0.750 - 0.985

THOST90050466

3/4 in - 0.950 - 1.205

THOST90075468

1 in - 1.180 - 1.375

THOST90100469

**STAR
TECK**



Straight Fitting

1/2 in - 0.525 - 0.650

THOST050462

1/2 in - 0.600 - 0.760

THOST050464

1/2 in - 0.725 - 0.885

THOST050465

1/2 in - 0.825 - 0.985

THOST050466

3/4 in - 0.880 - 1.065

THOST075467

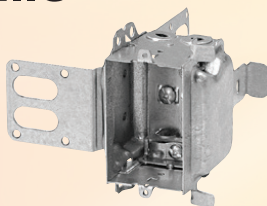
3/4 in - 1.025 - 1.205

THOST075468

1 in - 1.187 - 1.375

THOST100469

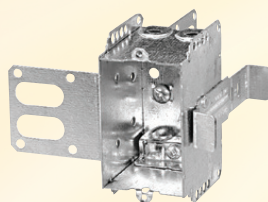
Iberville^{MD}



Gangable, 16 cu. in
3 x 2 x 2-1/2 in

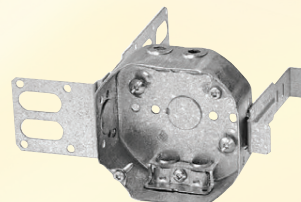
With universal connector
IBE3104LSSX

With connector for armored
and standard cable
IBE3104LSSAX



Non-gangable, 12.5 cu. in
3 x 2 x 2-1/2 in

With connector for armored
and standard cable
IBE2104LSSAX



Octagonal Box, 15 cu. in
4 x 4 x 1-1/2 in

With connector for armored
and standard cable
IBE54151LSSAX



CoRe+™

208 V or 240 V | 30A | 7,2 kW



Smart level 2 charging station for multi-unit residential buildings, commercial and industrial applications.

- NEMA 4X aluminum casing
- Certified to operate at temperatures ranging from -40 °C to 50 °C
- Wall-mounted or pedestal configuration
- Optional cable management system
- User authentication via RFID card or mobile application

Applications



Multi-unit residential buildings



Workplace



Fleet



Heavy-duty aluminum casing



Safe



Made in Canada



Certified



1-Year Limited Warranty

flo.com

SIEMENS

40 circuit panel including arc fault circuit breaker
SIEKITXP40200Q



Breaker
1P, 10kA, 15A, single pole, combination arc fault (AFCI)
QA115AFCCSA



Panel*
240V, 200A, 40 circuits, single phase main breaker
XP40200Q
**While supplies last.*



Sceptalight LED Light Fixture

15W, 120V, 5 000K, 1 575LM, frosted white, corrosion resistant, NEMA 4X and IP66 rated, polycarbonate globe



Utility light fixture
SCELVPELEDV2



Heavy duty light fixture
SCELVPFLEDV2HAZ



Retrofit light engine
SCELLED15V2

Convectair. Legendary comfort.

Convectair has changed how people think about home heating. We've built our reputation on thirty years of making harsh winters more bearable.

1 800 463-7043 | convectair.ca



Allegro II Series

Beauty takes many forms.

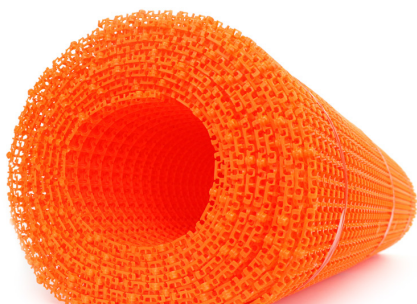
Three profiles offered for comfort perfectly suited to any space.



Apéro Series

The economical option that introduces homeowners to the signature Convectair comfort.

CONVECTAIR



FLOOR HEATING SYSTEM



FLEXTHERM®
your comfort experts **30**

PROUDLY  CANADIAN



1 800 353-9843



flextherm.com

ONTARIO - Effective from January 1st to February 28th 2023

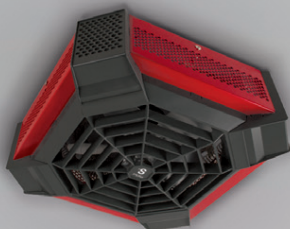
f in o y

lumen

9

°STELPRO

SPIDER™



CEILING FAN HEATER - SGH

- UNIQUE DESIGN
- SPECIALLY DESIGNED FOR RESIDENTIAL GARAGES
- ENERGY SAVING, COMPATIBLE WITH 4000W ELECTRONIC THERMOSTATS
- CEILING INSTALLATION FREES UP WALLS AND STORAGE SPACE

STESGH4002R 4000W Red

WALL FAN HEATER - RWF

STERWF0502W.....500 W
 STERWF0752W.....750 W
 STERWF1002W.....1000 W
 STERWF1252W.....1250 W
 STERWF1502W.....1500 W
 STERWF2002W.....2000 W
 STERWFT1W.....Built-in thermostat
 STERWFSAW.....Surface adapter

MIRAGE™

CONVECTOR - MIR

- BLENDS IN WITH ANY DECOR
- STURDY MONOCOQUE FRONT PANEL
- ADAPTS TO MULTIPLE MARKETS:
AVAILABLE IN 120V, 208V, 240V,
347V AND 600V

Without thermostat

STEMIR0502WCW... 500 W
 STEMIR1002WCW... 1000 W
 STEMIR1502WCW... 1500 W
 STEMIR2002WCW... 2000 W

Built-in thermostat

STEMIR0502W 500 W
 STEMIR1002W 1000 W
 STEMIR1502W 1500 W
 STEMIR2002W 2000 W

OXFORD™

SERIES | SÉRIE



COMMERCIAL AND RESIDENTIAL UNIT HEATER - RUH

Without thermostat

STERUH2CHAR 2000W Charcoal
 STERUH3CHAR 3000W Charcoal
 STERUH4CHAR 4000W Charcoal
 STERUH5CHAR 5000W Charcoal

Built-in thermostat

STERUH2TCHAR 2000W Charcoal
 STERUH3TCHAR 3000W Charcoal
 STERUH4TCHAR 4000W Charcoal
 STERUH5TCHAR 5000W Charcoal

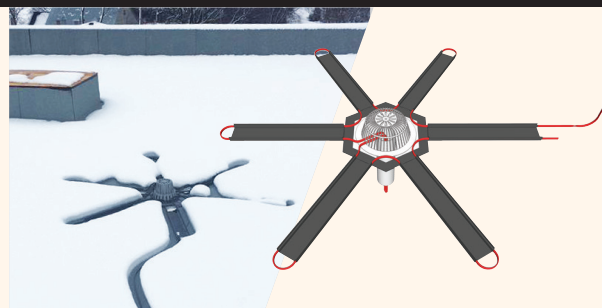
nvent RAYCHEM



Pre-Assembled Heating Cable

120V, self-regulating, with 6 ft lead cable and lighted plug.

6 ft # RAYFG16P
 12 ft # RAYFG112P
 18 ft # RAYFG118P
 24 ft # RAYFG124P
 36 ft # RAYFG136P
 50 ft # RAYFG150P
 75 ft # RAYFG175P
 100 ft # RAYFG1100P



RIM-DT Ice Melting System for Roof Drains

Includes cable, connection kit and channel panel.

120V # RAYF6205AL231
 208/240V # RAYF6205AL232

FIRE ALARM CABLES

In stock at Lumen



APPLICATIONS

Fire alarm cables are for use with fire monitoring/detection, power-limited fire alarm systems, smoke detectors, signaling, audio circuits, control circuits, fire protective circuits and security systems.



Non armoured unshielded cable - 300m
CAB18/3FAFT4300

Non armoured shielded cable - 300m
CAB18/3FASHFT4300

Armoured unshielded cable - 300m
CAB18/3FAFT4AARED300

Armoured shielded cable - 300m
CAB18/3FASHFT4AARED300

Also Available in the following gauges 12AWG, 14AWG and 16AWG and calibers 2c to 6c

LEVITON®



Standard Video Wall Jack

Type-F, wiring type: 625D
Wallplate included, white

LEV80781W



Standard Telephone Wall Jack

6P4C, wiring type: 625B4, screw terminals.
Wallplate included, white

LEV40249W



Standard Telephone and Video Wall Jack

6P6C x F, wiring type: 625D, screw terminals.
Wallplate included, white

LEV40258W



1G Module Frame

2 ports
LEV41642W

3 ports
LEV41643W

4 ports
LEV41644W



1G Faceplate

1 port
LEV410801WP

3 ports
LEV410803WP

4 ports
LEV410804WP

6 ports
LEV410806WP



Surface Mount Box

1 port
LEV410891WP

2 ports
LEV410892WP



Blank Module Connector

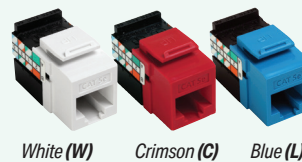
Pack of 10
LEV41084BW



F-Type Module

LEV41084FWF

Jack Modules



White (W) Crimson (C) Blue (L)

CAT 5 # LEV41108R*5

CAT 5E # LEV5G108R*5

Almond (T)	Black (E)
Ivory (I)	Dark red (R)
Yellow (Y)	Purple (P)
Orange (O)	Green (V)
Gray (G)	Brown (B)

CAT 5E+ # LEV5G110R*5

CAT 6 # LEV61110R*6

** Replace the asterisk by the color code letter*



LED Penlight

100LM of TRUEVIEW™ high definition output. IP67 rated: waterproof and dustproof protective rubber bite zone. Aircraft aluminum body. Includes: 2x AAA batteries.

MIL2105



M18 REDLITHIUM™ 1.5AH Compact Battery Two Pack

Runs cooler and performs in climates below -18°C (0°F).

MIL48111811



Snap-Off Knife

18 mm - With metal lock and precision cut blade.

MIL48221961



M18™ Wet / Dry Vacuum

2 gallon capacity. Includes: 6 ft flexible hose, crevice tool, utility nozzle and HEPA filter. Battery and charger not included.

MIL088020



SAWZALL® TORCH Metal Demolition Blades

18 TPI for fast, efficient cutting in thick and extreme metals.

Pack of 5 # MIL48005784



SDS Plus M/2™ 2-Cutter Drill Bits

4 in useable length

5/32 in

MIL48207401

3/16 in

MIL48207811



Insulated Screwdriver Set

1 000V. Includes: 2 Phillips, 2 slotted, 2 Robertson and a plastic storage rack.

WER347777



Insulated Screwdriver Set

1 000V, with 16 interchangeable blades. Isolated Kraftform handle united in a sturdy portable case.

WER347108



High Leverage Lineman's Pliers

9-1/2 in - Heavy duty. High transmission ratio for easy cutting. Design requires 40% less effort compared to conventional combination pliers thanks to optimised transmission ratio.

KNI0911240SBA



Electrician's Cable Knife

With 1000V insulating multi-component handle. Solid, fixed straight blade with transparent protective cap. Back of the blade plastic coated to avoid short circuits.

KNI9854SB



Driller's Dustbowl

Easy disposal of debris. Works with hole saw up to 8" and drill bits.

RAC48000



Crocs Needle Nose Wire Strippers

Ergonomic handle design for maximum comfort. Strip from 22-10 AWG.

RAC47000



Wire Dispensing System

Interlocking pairs, versatile, waterproof, rustproof, reliable, rugged easy to set up.

The pair # RAC11455



**High-Leverage
Diagonal-Cutting Pliers**
8 in - Angled head.

KLED200048



Needle Nose Pliers
8 in - Side cutting

KLED2038



Loose Cable Stapler

Forward action for stability and single-handed operation, adjustable to 1/4, 5/16 and 11/32 in staple sizes. Works solely with Klein Tools staples (450-001, 450-002, 450-003).

KLE450100



Cable Cutter

9-1/2 in - Cuts 4/0 aluminum, 2/0 soft copper, 100-pair 24 AWG communications cable. Jaw capacity of 1-1/16 in (2.7 cm).

KLE63050



Flush Cutter

5 in - Lightweight, Improved knife design snips wire up to 16 AWG producing a flat, flush cut. Steel return spring for increased comfort during repetitive cutting. Great for cutting small wire, zip ties and other fine material.

KLED2755



Diagonal Cutting Pliers

8 in - Angled head, short jaw.

KLED2488



Poly Line

With 6 500 ft green tracer.
Use to pull rope through conduit.

GRE430



Winter Gel Pulling Lube

1 gallon - Gel will not freeze below -31°C.

GREWGEL1



REEL-X™ Steel Fish Tape

1/8 in - Laser engraved measurement marks.

125 ft # GREFTXS125BP

240 ft # GREFTXS240BP



Aluminum Hand Bender

For 1/2" EMT
GRE840AH

1/2" rigid conduit
or 3/4" EMT
GRE841AH



Glo Stix™ Kit

3/16 in x 15 ft - Three luminescent fiberglass 5 ft rods glow in the dark to make fishing data wires easier in dark spaces.
Includes: bullet and "J" hook nose tips.

GRE54015



Bushing for Metal Stud Punches

For pre-punched hole or 1-11/32" diameter hole punched by 710.

Pack of 100

GRE712A100

Pack of 1 000

GRE712A1000



Aisle Marking Tape

2 in wide x 108 ft long
Yellow vinyl.

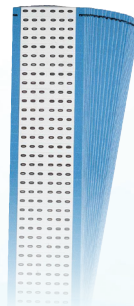
BRA58200



3-in-1 Plug Lockout

Accommodates high and low-voltage plugs up to 3" in diameter and 5-1/2" in length.

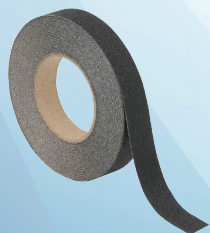
BRAPLO23



B-500 Wire Marker Cards

36 numerical legends per card, black text on white background, vinyl cloth.

- | | |
|------------|------------|
| 0 # BRAWM0 | 5 # BRAWM5 |
| 1 # BRAWM1 | 6 # BRAWM6 |
| 2 # BRAWM2 | 7 # BRAWM7 |
| 3 # BRAWM3 | 8 # BRAWM8 |
| 4 # BRAWM4 | 9 # BRAWM9 |



Anti-Slip Floor Tape

1 in wide x 60 ft long - Black.

BRA78189



Hubbell Plugout Lockout

For plugs 10.3 in L x 4.5 in diameter. Yellow polypropylene.

BRA65968



B-500 Porta-Pack® Wire Markers Booklet

45 markers: 0 to 9
BRAPWMPK1

10 markers: A to Z, 1 to 15 and +, -, /
BRAPWMPK2

10 markers: 1 to 45
BRAPWMPK3

FLUKE



Hard Point™ Test Lead Set

One pair (red / black). Cat IV 600V.
Cat III 1 000V, 10A rating.

FLUTL75



Alligator Clip Set

CAT IV 600V, CAT III 1000V, 10A

FLUAC175



Digital Multimeter

With non-contact voltage detection.
CAT III, 600V

FLU117EFSP



Electrical Tester Kit with Holster

Includes: T5-1000 CAT III 1 000V current tester, 1AC-II non-contact AC voltage detector, 4 mm detachable probes and holster.

FLUT5H51ACKITUS



True-RMS AC / DC Clamp Meter

Clamp meter with iFlex transmits results via Fluke Connect Measurements app, stays safely away from the arc flash zone through Bluetooth connectivity to Apple and Android devices.

FLU376FC



789 ProcessMeter™

Combines the functionality of a loop calibrator with the power of a precision 1000V, 440 mA True-RMS digital multimeter. Optional IR3000FC module for wireless data logging capabilities via Fluke Connect® mobile App.

Includes: 24V loop power supply.

FLU789

3M

8233 N100 Particulate Respirator

Two-strap design with welded dual point attachment.

3MS8233



N95 Particulate Respirator

Adjustable nose clip reduces potential for eyewear fogging and helps ensure a better deal and fit. Two-strap design with welded dual point attachment, without valve, **sold in pack of 20.**

3MS8210



Aura™ Particulate Respirator

NIOSH approved N95 rating. Adjustable nose clip, nose foam, 3-panel, flat-fold style, stapled headbands. **Individually sealed, sold in pack of 20.**

3MS9205+



P100 Particulate Filter Cartridge

NIOSH approved for environments containing certain oil and non-oil based particles. Can be used in a variety of applications including welding, brazing torch cutting, metal pouring, soldering, etc.

Pack of 2 # 3MS7093



SecureFit™ 600 Safety Glasses

Scotchgard™ polycarbonate anti-fog lens absorbs 99.9% UVA & UVB.

1 For outdoor use
3MSSF602SGAF

2 For indoor / outdoor use
3MSSF607SGAF



Fire Barrier Sealant CP 25WB+

10.1 fl. oz (298 ml)

Firestop tested up to 4 hours.

TROCP25WB+10.1OZ

TINGLEY

Orion™ Winter Over-Shoes Boot

For construction boots, nylon upper, polyurethane midsole and TPR outsole. Anti-fatigue, with heavy-duty performance.

PRODUCT #	SIZE	MEN	WOMEN
# TIN7500GSM	Small	4 - 5-1/2	6 - 7-1/2
# TIN7500GMD	Medium	6 - 7-1/2	8 - 9-1/2
# TIN7500GLG	Large	8 - 9-1/2	10 - 11-1/2
# TIN7500GXL	X-Large	10 - 12	12 - 14
# TIN7500G2XL	2X-Large	13 - 15	-

DYNAMIC
SECURITE INTERNATIONALE

Boss® ThermMD Heated Vest

Base layer with 3 adjustable settings. Heating elements located on the chest and back, includes battery operated remote control, quick rechargeable 5V power bank provides 8+ hours of warmth on a single charge, machine washable, one size fits all.

DYN300HV100

Replacement battery for # DYN300HV100

DYNPC399HVBAT



Boss® Heated Glove Liner

2 rechargeable batteries with 2.5 hours of autonomy, 3 temperature ranges, machine washable, one size.

The pair # DYNPC399HG20

PIONEER

3-in-1 Neck Warmer

Micro-fleece, converts from neck warmer to hat or face mask. One size, black.

PIOV4030470-O/S



K1 Mid-Sole Ice Cleat

Ads traction in icy and snowy work conditions. Ideal for workers regularly going from outdoor to indoor environments (just rotate them). One size.

Regular (pair) # PIOV9770150OS

Low profile (pair) # PIOV9770250OS

rve



ELECTRIC VEHICLE ENERGY MANAGEMENT SYSTEM

Ask your branch representative for more information
about the DCC product line and its availability.

DCC-9

Allows the connection of a charger
to a fully loaded electrical panel
with a main power supply of 125A
or under.

DCC-11

Allows the connection of a charger
to a fully loaded electrical panel
with a main power supply of more
than 125A (150A or 200A).

DCC-10

Allows the connection of a charger
to a new branch-circuit of a panel
without affecting the load calcula-
tion when breaker spaces are
available.



Download the Lumen app!



Place your orders directly
online at lumen.ca or via
the Lumen app.



Two branches to better serve Ottawa and Eastern Ontario !

OTTAWA EAST

1000, Belfast Road, Ottawa (ON) K1G 4A2
Tel. : 613 789-7500 / Fax : 613 789-7501
Toll free : 1 855 589-7500

OTTAWA WEST

1050, Baxter Road, Ottawa (ON) K2C 3P1
Tel. : 613 828-2930 / Fax : 613 828-2972
Toll free : 1 888 491-2930

Lumen
A Sonepar Company

Prices are subject to change without notice. All images are for illustrative purposes only. Air Miles program is reserved to the Electrical Contractor ECAO and OEL members only. We are currently experiencing an exceptionally high demand for many popular products. As a result, some products advertised in this flyer may not be available. Please check your local branch for availability or visit lumen.ca. We are currently working on replenishing supplies as quickly as possible and apologize for any inconvenience this may cause.

