

# CARRYALL 700

Club Car®




## CARRYALL ALWAYS TOUGH, ALWAYS READY

For you and your team, every day is different. You need a vehicle you can trust to get any job done—even the unexpected ones. The Carryall 700 Series from Club Car features an extended six-foot truck bed to keep your day and business moving forward.


# CARRYALL 700

## FOR THE LONG HAUL


The Carryall 700 boasts a standard electric bed lift, combining practicality and advanced design for all your lifting needs.



Max Speed  
19 mph



Max Vehicle Capacity  
1500 lbs

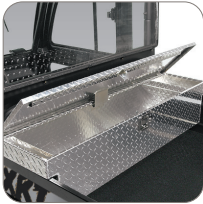


Horsepower  
14 hp (gas)  
3.7 hp (electric)  
8.0 hp (electric AC)  
7.4 hp (Li-ion)



### OPTIONS & ACCESSORIES

Ask your Club Car sales representative for details.



Aluminum Locking Tool Box



5-Panel Rear View Mirror



Stakeside Bed



USB Port



Curtis Cab



Canopy/Windshield



Strobe Light



Rear Receiver Hitch

#### Available Body Colors

##### Standard Colors



White



Dark Green



Bright Blue



Dark Gray



Black



Beige



Classic Blue



Titanium



Red

Colors may vary by product

##### Premium Colors

	GASOLINE	ELECTRIC		LITHIUM ION
ENGINE	Kohler EFI	48-volt 3-phase AC	48-volt DC	48-volt 3-phase AC
HORSEPOWER	14.5 hp (10.8 kW) rated @ 3600 RPM per SAE J1940	8 hp (6 kW) Peak 16 hp (11.7 kW)	3.7 hp (2.7kW) rated, Peak 20 hp (14.9 kW)	7.4 hp (5.5 kW) rated @ 2863 rpm; Peak 21.4 hp (16 kW)
BATTERIES	12-volt 500 CCA 105 min Reserve	Eight 6-volt Flooded Lead Acid	Std: Vangaurd 7.0kWh Lithium Light Duty; Vangaurd 4.0kWh Lithium	
CHARGER	N/A	DeltaQ QuiQ (1 kW High Frequency)	Std: DeltaQ IC650 - 650W high frequency Opt: DeltaQ IC900 - 900W high frequency	
STEERING	Self-adjusting Rack and Pinion	Self-adjusting Rack and Pinion	Self-adjusting Rack and Pinion	
FRONT SUSPENSION	Independent leaf spring with dual hydraulic shocks	Independent leaf spring with dual hydraulic shocks	Independent leaf spring with dual hydraulic shocks	
BRAKES	4-wheel Mechanical Drum	4-wheel Mechanical Drum	4-wheel Mechanical Drum	
PARK BRAKE	Foot Operated, Multi-lock	Foot Operated, Multi-lock	Foot Operated, Multi-lock	
BODY & FINISH	ArmorFlex with automotive paint/clearcoat	ArmorFlex with automotive paint/clearcoat	ArmorFlex with automotive paint/clearcoat	
TIRES	20 x 10-10, 6-ply	20 x 10-10, 6-ply	20 x 10-10, 6-ply	
BED L X W X H	64.5 x 47.5 x 10.5in (163.8 x 120.6 x 26.6cm)	64.5 x 47.5 x 10.5 in (163.8 x 120.6 x 26.6cm)	64.5 x 47.5 x 10.5 in (163.8 x 120.6 x 26.6cm)	
BED CAPACITY	1000 lbs (454 kg)	1000 lbs (454 kg)	1000 lbs (454 kg)	
TOTAL PAYLOAD CAPACITY	1500 lbs (680 kg)	1500 lbs (680 kg)	1500 lbs (680 kg)	
TOWING CAPACITY	1500 lbs (680 kg)	1500 lbs (680 kg)	1500 lbs (680 kg)	
WHEELBASE	99.1 in (251.7 cm)	99.1 in (251.7 cm)	99.1 in (251.7 cm)	
GROUND CLEARANCE	5.2 in (13.2 cm)	5.6 in (14.2 cm)	5.6 in (14.2 cm)	
FUEL CAPACITY	5.5 Gallons (20.8 L)	N/A	N/A	
CURB WEIGHT	993 lb (450.4 kg)	1475 lb (669 kg)	1013 lb (459.4 kg)	
SPEED RANGE	15-17 mph (24-27 kph)	5-17 mph (8-27 kph)	5-19 mph (8-31 kph)	
LIMITED WARRANTY	3 yr/3000 hr limited powertrain/frame; 2 yr limited remaining vehicle	4 yr limited battery warranty; 3 yr limited powertrain/frame; 2 yr limited remaining vehicle	5 yr limited battery warranty; 3 yr limited powertrain/frame; 2 yr limited remaining vehicle	