



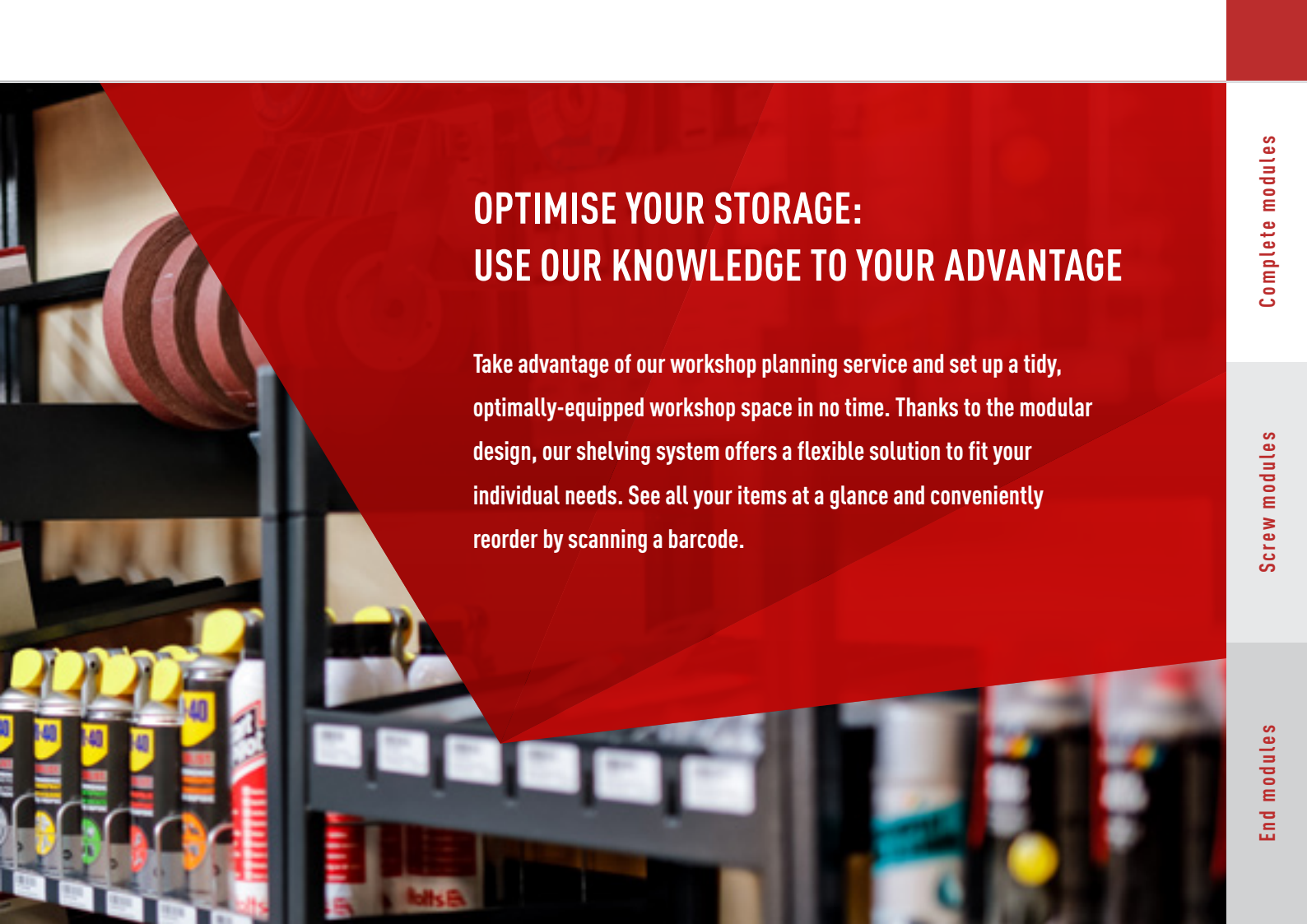
KRAMP

WORKSHOP

WORKSHOP SOLUTIONS
**ORGANISED STORAGE,
SAVING TIME AND SPACE
QUICKLY FIND PRODUCT LOCATION**



WORKSHOP SOLUTIONS
**ORGANISED STORAGE,
SAVING TIME AND SPACE
QUICKLY FIND
PRODUCT LOCATION**



OPTIMISE YOUR STORAGE: USE OUR KNOWLEDGE TO YOUR ADVANTAGE

Take advantage of our workshop planning service and set up a tidy, optimally-equipped workshop space in no time. Thanks to the modular design, our shelving system offers a flexible solution to fit your individual needs. See all your items at a glance and conveniently reorder by scanning a barcode.

Table of contents

Complete modules	4
Screw modules	8
End modules	16
Centre modules	24
Base modules	38
Accessories.....	40

PROFESSIONAL AND FUNCTIONAL: YOUR NEW SHELVING SYSTEM

The shelving system offers a multitude of possible combinations and variations. This means that shelves can be customised depending on the space available and space requirements.

-
- A** Base modules — for ensuring shelf stability for and storing bulky and heavy items
 - B** Centre modules — have angled shelves, making it easy to remove boxes from the clearly laid out screw range
 - C** End modules — provide cover to protect the products from dust and stabilise the shelf tower
 - D** Drawer module variant — store product ranges, small parts and /or tools
 - E** Straight shelf variant — for storing various products such as cartridges, spray cans, bottles etc.


A



A PERFECTLY ORGANISED WAREHOUSE SAVES TIME AND COSTS

Complete modules

Screw modules

End modules

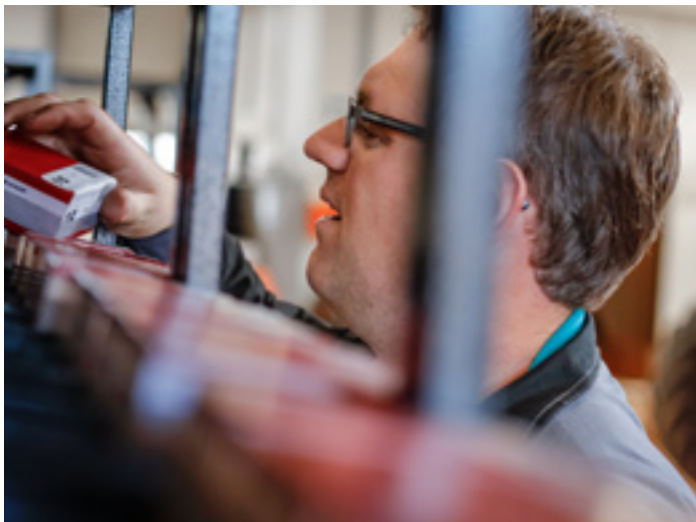
Centre modules

Base modules

Accessories

INNOVATIVE SOLUTIONS AND WORLD CLASS SERVICE

As a Kramp customer, you benefit from our vast experience in B2B, spanning more than 50 years. We know what your business needs and can give you expert advice. Our specialists can help you optimise your storage effectively, take advantage of our comprehensive range of services to help you boost sales and increase your profit margins.



Kramp Workshop Solutions: benefits for you

- Expert advice
 - when selecting suitable modules
 - when selecting suitable products
- Delivery and assembly
 - by the Kramp shop team
- Save time
 - eliminate tedious searching
 - eliminate time-consuming inventory control
- Save money
 - avoid excess or insufficient stock
- Order quickly and easily
 - by scanning the barcode directly from the shelf

A CLEARER VIEW AND MORE CONVENIENCE



Kramp's service is in a class of its own

As a Kramp customer, you have 24/7 access to over 500,000 items in our webshop. Our powerful logistics mean there is no need for large amounts of stock. Reorder the items you require by simply scanning a barcode and placing your order for next day delivery.

Should you have any questions our customer advisors and product specialists have all the information you need and are happy to help.

ORDER QUICKLY AND EASILY BY SCANNING A BARCODE

ORDER THE PRODUCTS YOU REQUIRE BY SCANNING A BARCODE

Use the barcode scanner to place orders quickly and efficiently, directly from the shelf. Keep an eye on your product range and easily order all of the items you need just in time.

Reordering made easy

Fast and error-free reordering — it's easy with scan-to-shelf. Each item has a corresponding barcode on the shelf. Use the barcode scanner to place reorders directly from the shelf.

Advantage: Keep an eye on your products and order:

- Exactly the items you need
- Immediately and error free
- With a few mouse clicks

Kramp Workshop Solutions offers the innovative scan-to-shelf solution to optimise your reordering process.



ORDER THE PRODUCTS YOU REQUIRE BY SCANNING A BARCODE



Kramp Workshop Solutions: Scan-to-shelf

With scan-to-shelf, you can spare yourself the task of typing product codes, and place your order in no time at all with just a few mouse clicks.

- Connect the barcode scanner with the webshop
- Import order data into your shopping cart
- Order online electronically
- Finished! It's that easy!

Another advantage: The barcode scanner is easy to use, requires no installation and is compatible with all operating systems (only a simple USB port is required).

Do you have any questions about scan-to-shelf? Our Business Solutions specialists will be happy to help..

ORDER OPTIMISATION WITH SCAN-TO-SHELF



Fasteners 10.9

KWS6910R01

Brand: Kramp
 Dimensions: 187,6 x 58,0 x 34,0 cm
 Description: Assortment of bolts in 10.9 hardness in raw/black
 Starting from size M6 to M20
 Fits in a complete tower with 4 sections

Description	Quantity	Item
Hex bolt M6x20 10.9 black	25	933620109B
Hex bolt M6x30 10.9 black	25	933630109B
Hex bolt M6x40 10.9 black	25	933640109B
Hex bolt M6x50 10.9 black	25	931650109B
Hex bolt M6x60 10.9 black	25	931660109B
Hex bolt M8x20 10.9 black	25	933820109B
Hex bolt M8x30 10.9 black	25	933830109B
Hex bolt M8x40 10.9 black	25	933840109B
Hex screw M8x60 10.9 black	25	931860109B
Hex bolt M8x80 10.9 black	25	931880109B
Hex bolt M10x30 10.9 black	25	9331030109B
Hex bolt M10x40 10.9 black	25	9331040109B
Hex screw M10x60 10.9 black	25	9311060109B
Hex bolt M10x80 10.9 black	25	9311080109B
Hex bolt M10x100 10.9 black	25	93110100109B
Hex bolt M12x40 10.9 black	25	9331240109B
Hex bolt M12x60 10.9 black	25	9311260109B
Hex bolt M12x80 10.9 black	25	9311280109B
Hex bolt M12x100 10.9 black	25	93112100109B
Hex bolt M14x30 10.9 black	25	9331430109B

Shelf component	Quantity	Item
Finishing module	1	291706937
Standard part module	2	291706837

Description	Quantity	Item
Hex bolt M14x40 10.9 black	25	9331440109B
Hex bolt M14x60 10.9 black	25	9311460109B
Hex bolt M14x80 10.9 black	25	9311480109B
Hex bolt M14x100 10.9 black	25	93114100109B
Hex bolt M16x40 10.9 black	25	9331640109B
Hex bolt M16x60 10.9 black	25	9311660109B
Hex bolt M16x80 10.9 black	25	9311680109B
Hex bolt M16x100 10.9 black	25	93116100109B
Hex bolt M16x120 10.9 black	25	93116120109B
Hex bolt M18x40 10.9 black	10	9331840109B
Hex bolt M18x60 10.9 black	10	9311860109B
Hex bolt M18x80 10.9 black	10	9311880109B
Hex bolt M18x100 10.9 black	10	93118100109B
Hex bolt M18x120 10.9 black	10	93118120109BP010
Hex bolt M20x40 10.9 black	25	9332040109B
Hex bolt M20x60 10.9 black	10	9312060109B
Hex bolt M20x80 10.9 black	10	9312080109B
Bolt M20x100 10.9 black	10	93120100109BP010
Hex bolt M20x120 10.9 black	10	93120120109BP010
Bolt M20x140 10.9 black	10	93120140109BP010

Shelf component	Quantity	Item
Base module 1x universal base	1	2917024137
Linbin container red no.2L	40	WE6821 (Option)

Complete modules

Screw modules

End modules

Centre modules

Base modules

Accessories



Fasteners 8.8 (2 Rack)

KWS6905R01

Brand: Kramp

Dimensions: 187,6 x 116,0 x 34,0 cm

Description: Assortment of: bolts, nuts, lock nuts, flat washers, spring washers and bodywork washers.

Quality 8.8 zinc plated

Starting from size M6 to M20

Fits in 2 complete tower with 4 sections each.

Description	Quantity	Item
Hex Screw M6X20 8.8 Zp	100	933620
Hex screw M6x30 8.8 ZP	100	933630
Hex screw M6x40 8.8 ZP	100	933640
Hex bolt M6x60 8.8 ZP	100	931660
Hex screw M8x20 8.8 ZP	100	933820
Hex screw M8x30 8.8 ZP	100	933830
Hex screw M8x40 8.8 ZP	100	933840
Hex bolt M8x60 8.8 ZP	100	931860
Hex bolt M8x80 8.8 ZP	100	931880RA
Hex bolt M8x100 8.8 ZP	100	9318100
Hex screw M10X20 8.8 Zp	100	9331020
Hex screw M10x40 8.8 ZP	100	9331040
Hex bolt M10x60 8.8 ZP	100	9311060
Hex bolt M10x80 8.8 ZP	100	9311080
Hex bolt M10x100 8.8 ZP	100	93110100
Hex bolt M10x120 8.8 ZP	50	93110120
Hex screw M12x40 8.8 ZP	100	9331240
Hex bolt M12x60 8.8 ZP	100	9311260
Hex bolt M12x80 8.8 ZP	50	9311280
Hex bolt M12x100 8.8 ZP	50	93112100
Hex screw M14x40 8.8 ZP	50	9331440
Hex bolt M14x60 8.8 ZP	50	9311460
Hex bolt M14x80 8.8 ZP	50	9311480
Hex bolt M14x100 8.8 ZP	50	93114100
Hex bolt M14x120 8.8 ZP	25	93114120
Hex screw M16x40 8.8 ZP	50	9331640
Hex bolt M16x60 8.8 ZP	50	9311660
Hex bolt M16x80 8.8 ZP	50	9311680
Hex bolt M16x100 8.8 ZP	50	93116100
Hex bolt M16x120 8.8 ZP	25	93116120
Hex screw M18x40 8.8 ZP	25	9331840
Hex bolt M18x60 8.8 ZP	25	9311860
Hex bolt M18x80 8.8 ZP	25	9311880
Hex bolt M18x100 8.8 ZP	25	93118100
Hex screw M20x40 8.8 ZP	25	9332040
Hex bolt M20x60 8.8 ZP	25	9312060
Hex bolt M20x80 8.8 ZP	25	9312080
Hex bolt M20x100 8.8 ZP	25	93120100
Hex bolt M20x120 8.8 ZP	25	93120120
Hex bolt M20x140 8.8 ZP	25	93120140

Shelf component	Quantity	Item
Finishing module	2	291706937
Standard part module	4	291706837

Description	Quantity	Item
Nut M6	100	9346P100
Nut M8	100	9348P100
Nut M10	100	93410P100
Nut M12	100	93412P100
Nut M14	50	93414P050
Nut M16	50	93416P050
Nut M18	25	93418P025
Nut M20	25	93420P025
Lock nut M6	100	9856
Lock nut M8	100	9858
Lock nut M10	100	98510
Lock nut M12	100	98512
Lock nut M14	50	98514
Lock nut M16	50	98516
Safety nut Quality 8 FZB 18 me	25	98518
Lock nut M20	25	98520
Flat washer M6, zinc-plated	100	125A6
Flat washer M8, zinc-plated	100	125A8
Flat washer M10, zinc-plated	100	125A10
Flat Washer M12, Zinc-Plated	100	125A12
Flat washer M14, zinc-plated	100	125A14
Flat Washer M16, Zinc-Plated	50	125A16
Flat washer M18, zinc-plated	50	125A18
Flat washer M20, zinc-plated	25	125A20
Spring washer M6	100	127B6
Spring washer M8	100	127B8
Spring washer M10	100	127B10
Spring washer M12	100	127B12RC
Spring washer M14	100	127B14
Spring washer M16	50	127B16
Spring washer M18	50	127B18
Spring washer M20	50	127B20
Washer zinc plated M6	100	9021A6
Washer zinc plated M8	100	9021A8
Washer zinc plated M10	100	9021A10
Washer zinc plated M12	100	9021A12
Washer zinc plated M14	100	9021A14
Washer zinc plated M16	50	9021A16
Washer zinc plated M18	50	9021A18
Washer zinc plated M20	50	9021A20

Shelf component	Quantity	Item
Base module 1x universal base	2	2917024137
Linbin container red no.2L	80	WE6821 (Option)

Complete modules

Screw modules

End modules

Centre modules

Base modules

Accessories



Fasteners 8.8 F&G (2 Rack)

KWS6905R02

Brand: Kramp

Dimensions: 187,6 x 116,0 x 34,0 cm

Assortment of: bolts, nuts, lock nuts, flat washers, spring washers and bodywork washers.

Starting from size M4 to M12

Fits in 2 complete tower with 4 sections each.

Description	Quantity	Item
Hex screw M4x20 8.8 ZP	100	933420
Hex screw M4x30 8.8 ZP	100	933430
Hex screw M4x40 8.8 ZP	100	933440
Hex bolt M4x50 8.8 ZP	100	931450
Hex screw M5x20 8.8 ZP	100	933520
Hex screw M5x30 8.8 ZP	100	933530
Hex screw M5x40 8.8 ZP	100	933540
Hex bolt M5x50 8.8 ZP	100	931550
Hex bolt M5x60 8.8 ZP	100	931560
Hex Screw M6X20 8.8 Zp	100	933620
Hex screw M6x30 8.8 ZP	100	933630
Hex screw M6x40 8.8 ZP	100	933640
Hex bolt M6x50 8.8 ZP	100	931650
Hex bolt M6x60 8.8 ZP	100	931660
Hex bolt M6x80 8.8 ZP	100	931680
Hex screw M8x20 8.8 ZP	100	933820
Hex screw M8x30 8.8 ZP	100	933830
Hex screw M8x40 8.8 ZP	100	933840
Hex bolt M8x50 8.8 ZP	100	931850
Hex bolt M8x60 8.8 ZP	100	931860
Hex bolt M8x80 8.8 ZP	100	931880RA
Hex screw M10X20 8.8 Zp	100	9331020
Hex screw M10x30 8.8 ZP	100	9331030
Hex screw M10x40 8.8 ZP	100	9331040
Hex bolt M10x50 8.8 ZP	100	9311050
Hex bolt M10x60 8.8 ZP	100	9311060
Hex bolt M10x80 8.8 ZP	100	9311080
Hex bolt M10x100 8.8 ZP	100	93110100
Hex screw M12x30 8.8 ZP	100	9331230
Hex screw M12x40 8.8 ZP	100	9331240
Hex bolt M12x50 8.8 ZP	100	9311250
Hex bolt M12x60 8.8 ZP	100	9311260
Hex bolt M12x80 8.8 ZP	50	9311280

Shelf component	Quantity	Item
Finishing module	2	291706937
Standard part module	4	291706837

Description	Quantity	Item
Hex bolt M12x100 8.8 ZP	50	93112100
Hex bolt M12x120 8.8 ZP	50	93112120
Nut M4	100	9344P100
Nut M5	100	9345P100
Nut M6	100	9346P100
Nut M8	100	9348P100
Nut M10	100	93410P100
Nut M12	100	93412P100
Lock nut M4	100	9854
Lock nut M5	100	9855
Lock nut M6	100	9856
Lock nut M8	100	9858
Lock nut M10	100	98510
Lock nut M12	100	98512
Flat washer M4, zinc-plated	200	125A4RC
Flat washer M5, zinc-plated	200	125A5RC
Flat washer M6, zinc-plated	100	125A6
Flat washer M8, zinc-plated	100	125A8
Flat washer M10, zinc-plated	100	125A10
Flat washer M12, Zinc-Plated	100	125A12
Spring washer M4	100	127B4
Spring washer M5	100	127B5
Spring washer M6	100	127B6
Spring washer M8	100	127B8
Spring washer M10	100	127B10
Spring washer M12	100	127B12RC
Washer zinc plated M4	100	9021A4
Washer zinc plated M5	100	9021A5
Washer zinc plated M6	100	9021A6
Washer zinc plated M8	100	9021A8
Washer zinc plated M10	100	9021A10
Washer zinc plated M12	100	9021A12

Shelf component	Quantity	Item
Base module 1x universal base	2	2917024137
Linbin container red no.2L	65	WE6821 (Option)

Complete modules

Screw modules

End modules

Centre modules

Base modules

Accessories



Fasteners 8.8 (3 Rack)

KWS6905R03

Brand: Kramp
 Dimensions: 187,6 x 174,0 x 34,0 cm
 Description: Assortment of: bolts, nuts, lock nuts, flat washers, spring washers and bodywork washers.
 Quality 8.8 zinc plated
 Starting from size M4 to M20
 Fits in 3 complete tower with 4 sections each

Description	Quantity	Item
Hex screw M4x20 8.8 ZP	100	933420
Hex screw M4x30 8.8 ZP	100	933430
Hex screw M4x40 8.8 ZP	100	933440
Hex bolt M4x50 8.8 ZP	100	931450
Hex screw M5x20 8.8 ZP	100	933520
Hex screw M5x30 8.8 ZP	100	933530
Hex screw M5x40 8.8 ZP	100	933540
Hex bolt M5x50 8.8 ZP	100	931550
Hex bolt M5x60 8.8 ZP	100	931560
Hex screw M6x20 8.8 Zp	100	933620
Hex screw M6x30 8.8 ZP	100	933630
Hex screw M6x40 8.8 ZP	100	933640
Hex bolt M6x50 8.8 ZP	100	931650
Hex bolt M6x60 8.8 ZP	100	931660
Hex bolt M6x80 8.8 ZP	100	931680

Description	Quantity	Item
Hex screw M8x20 8.8 ZP	100	933820
Hex screw M8x30 8.8 ZP	100	933830
Hex screw M8x40 8.8 ZP	100	933840
Hex bolt M8x50 8.8 ZP	100	931850
Hex bolt M8x60 8.8 ZP	100	931860
Hex bolt M8x80 8.8 ZP	100	931880RA
Hex bolt M8x100 8.8 ZP	100	9318100
Hex screw M10x20 8.8 Zp	100	9331020
Hex screw M10x30 8.8 ZP	100	9331030
Hex screw M10x40 8.8 ZP	100	9331040
Hex bolt M10x50 8.8 ZP	100	9311050
Hex bolt M10x60 8.8 ZP	100	9311060
Hex bolt M10x80 8.8 ZP	100	9311080
Hex bolt M10x100 8.8 ZP	100	93110100
Hex bolt M10x120 8.8 ZP	50	93110120

Description	Quantity	Item
Hex screw M12x30 8.8 ZP	100	9331230
Hex screw M12x40 8.8 ZP	100	9331240
Hex bolt M12x50 8.8 ZP	100	9311250
Hex bolt M12x60 8.8 ZP	100	9311260
Hex bolt M12x80 8.8 ZP	50	9311280
Hex bolt M12x100 8.8 ZP	50	93112100
Hex bolt M12x120 8.8 ZP	50	93112120
Hex screw M14x30 8.8 ZP	50	9331430
Hex screw M14x40 8.8 ZP	50	9331440
Hex bolt M14x60 8.8 ZP	50	9311460
Hex bolt M14x80 8.8 ZP	50	9311480
Hex bolt M14x100 8.8 ZP	50	93114100
Hex bolt M14x120 8.8 ZP	25	93114120
Hex screw M16x40 8.8 ZP	50	9331640
Hex bolt M16x60 8.8 ZP	50	9311660
Hex bolt M16x80 8.8 ZP	50	9311680
Hex bolt M16x100 8.8 ZP	50	93116100
Hex bolt M16x120 8.8 ZP	25	93116120
Hex screw M18x40 8.8 ZP	25	9331840
Hex bolt M18x60 8.8 ZP	25	9311860
Hex bolt M18x80 8.8 ZP	25	9311880
Hex bolt M18x100 8.8 ZP	25	93118100
Hex bolt M18x120 8.8 Zp	10	93118120
Hex bolt M18x140 8.8 ZP	10	93118140
Hex screw M20x40 8.8 ZP	25	9332040
Hex bolt M20x60 8.8 ZP	25	9312060
Hex bolt M20x80 8.8 ZP	25	9312080
Hex bolt M20x100 8.8 ZP	25	93120100
Hex bolt M20x120 8.8 ZP	25	93120120
Hex bolt M20x140 8.8 ZP	25	93120140
Nut M4	100	9344P100
Nut M5	100	9345P100
Nut M6	100	9346P100
Nut M8	100	9348P100
Nut M10	100	93410P100
Nut M12	100	93412P100
Nut M14	50	93414P050
Nut M16	50	93416P050
Nut M18	25	93418P025
Nut M20	25	93420P025

Shelf component	Quantity	Item
Finishing module	3	291706937
Standard part module	6	291706837

Description	Quantity	Item
Lock nut M4	100	9854
Lock nut M5	100	9855
Lock nut M6	100	9856
Lock nut M8	100	9858
Lock nut M10	100	98510
Lock nut M12	100	98512
Lock nut M14	50	98514
Lock nut M16	50	98516
Safety nut Quality 8 FZB 18 me	25	98518
Lock nut M20	25	98520
Flat washer M4, zinc-plated	200	125A4RC
Flat washer M5, zinc-plated	200	125A5RC
Flat washer M6, zinc-plated	100	125A6
Flat washer M8, zinc-plated	100	125A8
Flat washer M10, zinc-plated	100	125A10
Flat washer M12, Zinc-Plated	100	125A12
Flat washer M14, zinc-plated	100	125A14
Flat washer M16, Zinc-Plated	50	125A16
Flat washer M18, zinc-plated	50	125A18
Flat washer M20, zinc-plated	25	125A20
Spring washer M4	100	127B4
Spring washer M5	100	127B5
Spring washer M6	100	127B6
Spring washer M8	100	127B8
Spring washer M10	100	127B10
Spring washer M12	100	127B12RC
Spring washer M14	100	127B14
Spring washer M16	50	127B16
Spring washer M18	50	127B18
Spring washer M20	50	127B20
Washer zinc plated M4	100	9021A4
Washer zinc plated M5	100	9021A5
Washer zinc plated M6	100	9021A6
Washer zinc plated M8	100	9021A8
Washer zinc plated M10	100	9021A10
Washer zinc plated M12	100	9021A12
Washer zinc plated M14	100	9021A14
Washer zinc plated M16	50	9021A16
Washer zinc plated M18	50	9021A18
Washer zinc plated M20	50	9021A20

Shelf component	Quantity	Item
Base module 1x universal base	3	2917024137
Linbin container red no.2L	120	WE6821 (Option)

Complete modules

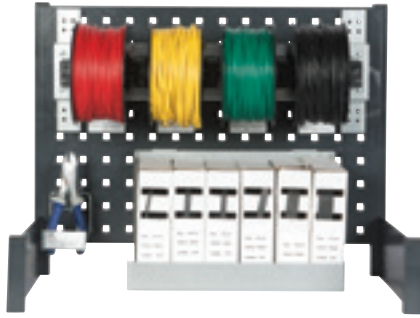
Screw modules

End modules

Centre modules

Base modules

Accessories



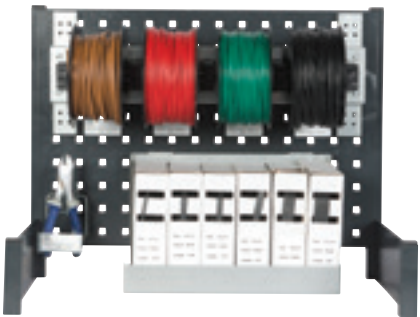
Cable 1.5mm² + Sh. Tube

KWS2655T01

Dimensions: 44,4 x 58,0 x 34,0 cm
 Description: Assortment of cables and heat shrink tubes. Cable in 1x1.5mm² in 4 colours: yellow, green, red and black. Shrink tube in 5 different sizes 2.4-1.2 4.8-2.4. 6.4-3.2. 9.5-4.8. 12.7-6.4 mm. Fits in 1 top module

Description	Quantity	Item
Cable yellow 1x1.5mm ²	100	KA1052
Cable green 1x1.5mm ²	100	KA1053
Cable red 1x1.5mm ²	100	KA1054
Cable black 1x1.5mm ²	100	KA1055
Heat shrink tubing 2.4-1.2	1	KK2Z024012
Heat shrink tubing 4.8-2.4	2	KK2Z048024
Heat shrink tubing 6.4-3.2	1	KK2Z064032
Heat shrink tubing 9.5-4.8	1	KK2Z095048
Heat shrink tubing 12.7-6.4	1	KK2Z127064

Shelf component	Quantity	Item
Finishing module	1	291702107837
Holder for 4 reels	1	KA4000
Univ. holder f. perforated she	4	67T63221
Holder for shrink tube in box	1	67T63222
Side cutting pliers 160mm	1	E189860
Perforated panel hook, short	1	TA001933



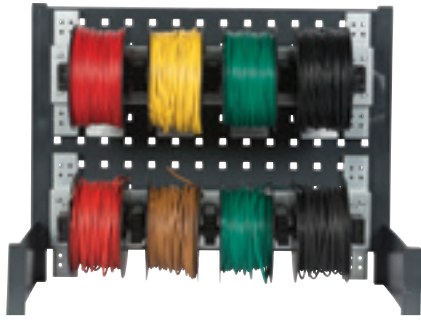
Cable 2.5mm² + Sh. Tube

KWS2655T02

Dimensions: 44,4 x 58,0 x 34,0 cm
 Description: Assortment of cables and heat shrink tubes. Cable in 1x2.5mm² in 4 colours: green, brown, red and black. Shrink tubes in 5 different sizes: 1.2-2.4, 2.4-4.8, 3.2-6.4, 4.8-9.5 and 6.4-12.7mm. Fits in 1 top module

Description	Quantity	Item
Cable green 1x2.5mm ²	50	KA1253
Cable 1 x 2.5mm ² brown 50 m	50	KA1256
Cable 1 x 2.5mm ² red 50 m	50	KA1257
Cable 1 x 2.5mm ² black 50 m	50	KA1258
Heat shrink tubing 2.4-1.2	1	KK2Z024012
Heat shrink tubing 4.8-2.4	2	KK2Z048024
Heat shrink tubing 6.4-3.2	1	KK2Z064032
Heat shrink tubing 9.5-4.8	1	KK2Z095048
Heat shrink tubing 12.7-6.4	1	KK2Z127064

Shelf component	Quantity	Item
Finishing module	1	291702107837
Holder for 4 reels	1	KA4000
Univ. holder f. perforated she	4	67T63221
Holder for shrink tube in box	1	67T63222
Side cutting pliers 160mm	1	E189860
Perforated panel hook, short	1	TA001933



Cable 1.5 + 2.5mm²

KWS2655T03

Dimensions: 44,4 x 58,0 x 34,0 cm
 Description: Assortment of cable 1x1.5mm² and 1x2.5mm² in 4 colours: 1x1.5mm²: in yellow, green, red and black, 1x2.5mm²: in green, brown, red and black.
 Fits in 1 top module

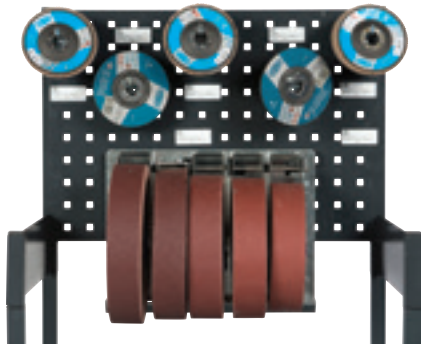
Description	Quantity	Item
Cable yellow 1x1.5mm ²	100	KA1052
Cable green 1x1.5mm ²	100	KA1053
Cable red 1x1.5mm ²	100	KA1054
Cable black 1x1.5mm ²	100	KA1055
Cable green 1x2.5mm ²	50	KA1253
Cable 1 x 2.5mm ² brown 50 m	50	KA1256
Cable 1 x 2.5mm ² red 50 m	50	KA1257
Cable 1 x 2.5mm ² black 50 m	50	KA1258

Shelf component	Quantity	Item
Finishing module	1	291702107837
Holder for 4 reels	2	KA4000
Side cutting pliers 160mm	1	E189860

Abrasives 125 mm

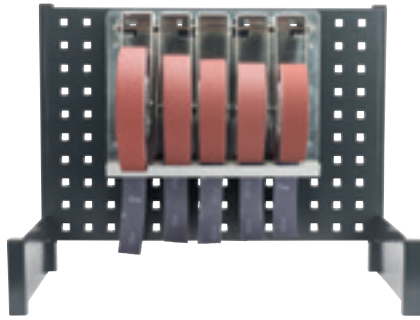
KWS3225T01

Brand: Tyrolit/3M
 Dimensions: 44,4 x 58,0 x 34,0 cm
 Description: Assortment of abrasives. Tyrolit cutting and Flap disc's and 3M Emery cloth
 Cutting disc basic for steel and stainless steel ø125 in 1.6 and 2.5 mm
 Flap disc ø115 in K60. K80. K120
 Emery cloth 38mmx25m in K60. K80. K100. K120. K150.
 Fits in 1 top module. 1 holder for emery cloth. 5 hooks. 2 adapters



Description	Quantity	Item
Cutting disc basic St-SS 125x1	3	222900
Cutting disc basic St-SS 125x2	3	222998
Lapper sanding pad metal	3	K19171
Lapper sanding pad metal	3	K19172
Lapper sanding pad metall	3	K19174
Cloth band 314D 38mmx25m P60	1	62872
Cloth band 314D 38mmx25m P80	1	62873
Cloth band 314D 38mmx25m P100	1	62874
Cloth band 314D 38mmx25m P120	1	62875
Cloth band 314D 38mmx25m P150	1	62876

Shelf component	Quantity	Item
Holder for abrasive cloth roll	1	18636313400
Adapter	2	67T63221
Top module with perforated panel	1	291702107837
Tool hook	5	220413001



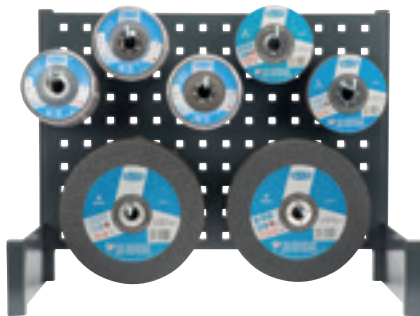
Description	Quantity	Item
Cloth band 314D 38mmx25m P60	1	62872
Cloth band 314D 38mmx25m P80	1	62873
Cloth band 314D 38mmx25m P100	1	62874
Cloth band 314D 38mmx25m P120	1	62875
Cloth band 314D 38mmx25m P150	1	62876

Cloth bands

KWS3225T03

Brand: 3M
 Dimensions: 44,4 x 58,0 x 34,0 cm
 Description: Assortment of abrasives. 3M Emery cloth 38mmx25m in K60, K80, K100, K120 and K150.
 Fits in 1 top module.
 1 holder for emery cloth. 2 adapters

Shelf component	Quantity	Item
Holder for abrasive cloth roll	1	18636313400
Univ. holder f. perforated she	2	67T63221
Finishing module	1	291702107837



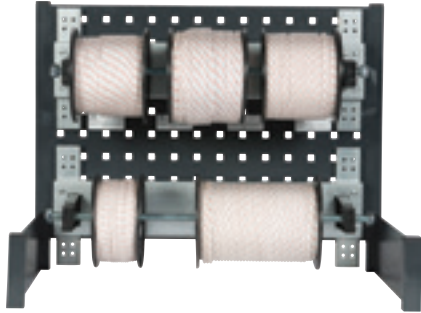
Description	Quantity	Item
Cutting disc basic St-SS 125x1	3	222900
Cutting disc basic St-SS 125x2	3	222998
Lapper sanding pad metal	3	K19171
Lapper sanding pad metal	3	K19172
Lapper sanding pad metall	3	K19174
Cutting disc basic St-SS 230x2	15	291949
Cutting disc basic St-SS 230x3	15	223002

Grinding and cutting discs

KWS3225T02

Brand: Tyrolit
 Dimensions: 44,4 x 58,0 x 34,0 cm
 Description: Assortment of abrasives. Tyrolit cutting and Flap disc's.
 Cutting disc basic for steel and stainless steel ø125 in 1.6 and 2.5 mm ø230 in 2.0 and 3.0 mm.
 Flap disc ø115 in K60. K80. K120.
 Fits in 1 top module with 7 hooks

Shelf component	Quantity	Item
Top module with perforated panel	1	291702107837
Tool hooks	7	220413001



Starter cords

KWS6720T01

Brand: Kramp
 Dimensions: 44,4 x 58,0 x 34,0 cm
 Description: Assortment of Kramp Starter cord 5 sizes all 100m 3.0. 3.5. 4.0. 4.5. 5.0 mm.
 Fits in 1 top module.
 2 holder for reels and 4 adapters

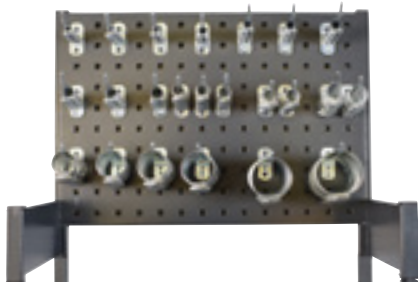
Description	Quantity	Item
Starter cord 3.0mm x 100m	1	KR0301000
Starter cord 3.5mm x 100m	1	KR0351000
Starter cord 4.0mm x 100m	1	KR0401000
Starter cord 4.5mm x 100m	1	KR0451000
Starter cord 5.0mm x 100m	1	KR0501000

Shelf component	Quantity	Item
Holder for 4 reels	2	KA4000
adapter	4	67T63221
Top module with perforated panel	1	291702107837

Hose clamp Top

KWS7029T01

Brand: Kramp/ABA
 Dimensions: 44,4 x 58,0 x 34,0 cm
 Description: Assortment of ABA mini hose clamps and KRAMP hose clamp.
 ABA in 10 different sizes 7-8.5mm to 15-17.5mm.
 KRAMP in 10 different sizes from size 10-16mm to 50-70mm.
 Fits in 1 top module



Description	Quantity	Item
Mini hose clamp 7-8,5mm	10	SMSM8
Mini hose clamp 8- 9,5mm	10	SMSM9
Mini hose clamp 9-10,5mm	10	SMSM10
Mini hose clamp 9,5-11,5mm	10	SMSM11
Mini hose clamp 10,5-12,5mm	10	SMSM12
Mini hose clamp 11,5-13,5mm	10	SMSM13
Mini hose clamp 12,5-14,5mm	10	SMSM14
Mini hose clamp 13,5-15,5mm	10	SMSM15
Mini hose clamp 14-16,5mm	10	SMSM16
Mini hose clamp 15-17,5mm	10	SMSM17
Hose clamp 10-16mm	30	HC1016
Hose clamp 13-19mm	20	HC1319

Description	Quantity	Item
Hose clamp 16-27mm	20	HC1627
Hose clamp 23-35mm	10	HC2335
Hose clamp 25-40mm	10	HC2540
Hose clamp 30-45mm	10	HC3045
Hose clamp 32-50mm	10	HC3250
Hose clamp 40-60mm	10	HC4060
Hose clamp 50-70mm	10	HC5070

Shelf component	Quantity	Item
Top module with perforated panel	1	291702107837
Tool hooks	20	220413001



Description	Quantity	Item
Multi-spray 500ml	4	31460KR
Brake cleaner 500ml	4	31461KR
Degreaser 500ml	4	32651KR
Chain spray 500ml	4	30535KR
Penetrating oil 500ml	4	32649KR
Silicone spray 500ml	4	30532KR

Kramp technical spr. 1 Top

KWS5409T01

Brand: Kramp
 Dimensions: 44,4 x 58,0 x 34,0 cm
 Description: Assortment of Kramp no. 1 technical sprays containing the following types: Multi spray, brake cleaner, Degreaser, Chain spray, Penetrating oil, and Silicone spray.
 Fits in 1 top module

Shelf component	Quantity	Item
Top module	1	291702104737



Description	Quantity	Item
Glass cleaner 500ml	4	32650KR
Contact spray 500ml	4	32652KR
Cutting oil 500ml	4	32653KR
Aluminium high-temp. grease	4	488442KR
Silicone non-stick spray	4	453606KR
Resin remover 400 ml	4	454265KR

Kramp technical spr. 2 Top

KWS5409T02

Brand: Kramp
 Dimensions: 44,4 x 58,0 x 34,0 cm
 Description: Assortment of Kramp no. 1 technical sprays containing the following types: Glass cleaner, Contact spray, Cutting oil, Aluminium high temp grease, Silicone non-stick and Resin remover.
 Fits in 1 top module

Shelf component	Quantity	Item
Top module	1	291702104737



Tech sprays F&G

KWS4270T01

Brand: Kramp/Motip
 Dimensions: 44,4 x 58,0 x 34,0 cm
 Description: Assortment of technical sprays containing the following types: Brake cleaner, PTFE, Rust remover, Carburetor cleaner, Silicone non-stick and Resin remover.
 Fits in 1 top module

Description	Quantity	Item
Brake cleaner 500 ml	4	000563
PTFE dry spray 500 ml	4	090201MOT
Rust remover 500 ml	4	090303MOT
Carburettor cleaner 500 ml	4	090510MOT
Silicone non-stick spray	4	453606KR
Resin remover 400 ml	4	454265KR

Shelf component	Quantity	Item
Top module	1	291702104737



Grease Gopart Top

KWS5367T01

Brand: Kramp
 Dimensions: 44,4 x 58,0 x 34,0 cm
 Description: Multi-purpose grease is a natural coloured, mineral oil-based lubricating grease saponified with a lithium base. 400 gram in standard cartridge.
 Fits in 1 top module

Description	Quantity	Item
Multipurpose grease EP	4	32650KR

Shelf component	Quantity	Item
Top module	1	291702104737



Welding rods

KWS3475M01

Brand: Kramp
 Dimensions: 44,4 x 58,0 x 34,0 cm
 Description: Assortment of Welding rods GYS and Oerlikon containing the following types GYS:
 GY38 in 1.6 – 2.0 – 3.2 – 4.0 mm
 312R in 2.5 – 3.2 mm
 Oerlikon:
 Supranox 316L in 2.5 – 3.25 – 4.0 mm
 Fits in 1 centre module

Description	Quantity	Item
210 steel wldng rods GY38 Ø1.6	1	085114GYS
355 rutile electr. GY38 Ø2mm	1	085022GYS
Rut. weld rod 3.2x350mm (165x)	1	085046GYS
Rut. weld rod 4.0x350mm (110x)	1	085053GYS
54 universal welding rods ø2.5	1	081475GYS
28 universal welding rods ø3.2	1	081468GYS

Description	Quantity	Item
Supranox 316L weld rods 2.5 mm	109	WPE316L25
Supranox 316L electrodes, 3.25	120	WPE316L325
Welding rods Supranox 316L 4mm	75	WPMOR1884

Shelf component	Quantity	Item
Universal module	1	291702106037



Cable ties

KWS7000M01

Brand: Kramp
 Dimensions: 44,4 x 58,0 x 34,0 cm
 Description: Assortment of Kramp cable ties containing the following colours and sizes:
 Black: 2.5x100, 3.6x140, 3.6x200, 4.8x200, 4.8x300 and 7.6x200mm.
 White: 2.5x100, 3.6x140, 3.6x200, 4.8x200 and 4.8x300mm.
 Fits in 1 centre module

Description	Quantity	Item
Cable ties, 2.5x100 mm, black	100	TR25100BLA
Cable ties, 3.6x140 mm, black	100	TR36140BLA
Cable ties, 3.6x200 mm, black	100	TR36200BLA
Cable ties, 4.8x200 mm, black	100	TR48200BLA
Cable ties, 4.8x300 mm, black	100	TR48300BLA
Cable ties, 7.6x200 mm, black	100	TR76200BLA
Cable ties, 2.5x100mm, white	100	TR25100WHI

Description	Quantity	Item
Cable ties, 3.6x140mm, white	100	TR36140WHI
Cable ties, 3.6x200 mm, white	100	TR36200WHI
Cable ties, 4.8x200 mm, white	100	TR48200WHI
Cable ties, 4.8x300 mm, white	100	TR48300WHI

Shelf component	Quantity	Item
Shelf module	1	291703637

Vehicle electric

KWS2230M01



Brand: Kramp
 Dimensions: 44,4 x 58,0 x 34,0 cm
 Description: Assortment of electrical accessories containing the following:
 Cable crimps in red, blue and yellow diaseal & duoflex, different kind of fuses and holders, switches, multi pins, tape and cable connectors.
 fits in 1. 6 draws centre module

Description	Quantity	Item
Assortment of not soldered re	1	1202144020
Assortment of not soldered ca	1	1202144030
Assortment of not soldered ca	1	1202144040
Assortment diaseal & duoflex	1	1202144060
Assortment of fuses	1	1202141010
Assortment of water fuses	1	1202141020
Assortment switches	1	1202142010
Multi pin assortment	1	1202144050
30-A blade fuse mini holder	6	SI20153
Fuse holder waterproof 20A	6	LFHA1C
Maxi fuse support 60A	6	SI33060
Fuse holder	6	SI1050000
Fuse holder GLAS 5X20MM	6	SI20155
Insulation tape, yellow 15x10	3	EM20401
Insulation tape 15mmx10m blue	3	EM20402
Insulation tape 15mmx10m green	3	EM20403
Insulation tape 15mmx10m red	3	EM20404
Insulation tape 15mmx10m black	3	EM20405
Insulation tape, brown 15x10	3	EM204015
Insulation tape yel/gr 15x10	3	EM204016
Insulation tape wh. 15 mmx10 m	3	EM204017
Cable connector block 2.5 mm ²	10	SI1035725
Cable connector block 6 mm ²	10	SI1035760
Cable connector block 10 mm ²	10	SI10357100
Cable connector block 16 mm ²	5	SI10357160

Shelf component	Quantity	Item
6-drawer module	1	291702737
8 compartment insert	2	1935200008

Complete modules

Screw modules

End modules

Centre modules

Base modules

Accessories



Electric F&G

KWS2230M02

Brand: Kramp
 Dimensions: 44,4 x 58,0 x 34,0 cm
 Description: Assortment of electrical accessories containing the following:
 Cable crimps in red, diaseal & duoflex, different kind of fuses and holders, tape and cable connectors.
 fits in 1.3 draws centre module

Description	Quantity	Item
Assortment of not soldered re	1	1202144020
Assortment diaseal & duoflex	1	1202144060
Assortment of fuses	1	1202141010
Assortment of water fuses	1	1202141020
30-A blade fuse mini holder	6	SI20153
Fuse holder waterproof 20A	6	LFHA1C
Insulation tape, yellow 15x10	3	EM20401
Insulation tape 15mmx10m blue	3	EM20402
Insulation tape 15mmx10m green	3	EM20403
Insulation tape 15mmx10m red	3	EM20404
Insulation tape 15mmx10m black	3	EM20405
Insulation tape, brown 15x10	3	EM204015
Insulation tape yel/gr 15x10	3	EM204016
Insulation tape wh. 15 mmx10 m	3	EM204017
Cable connector block 2.5 mm ²	10	SI1035725
Cable connector block 6 mm ²	10	SI1035760
Cable connector block 10 mm ²	10	SI10357100
Cable connector block 16 mm ²	5	SI10357160

Shelf component	Quantity	Item
Drawer module	1	291702937
8 compartment insert	2	1935200008



Hardware drawers

KWS6945M01

Brand: Kramp
 Dimensions: 44,4 x 58,0 x 34,0 cm
 Description: Assortment of technical and various accessories containing the following: Drills, bonded seal, Roller pins, Lock rings inner and outer, screws, Woodruff keys, grease nipples, springs and split pins.
 Fits in 1.6 draws centre module

Description	Quantity	Item
Assortment of bohrcraft 180 m	1	1202187210
Assortment of copper disks, 5	1	1202113010
Assortment of bonded seal 5-2	1	1202111720
Roll pin assortment	1	1202111310
Assortment of inner lock ring	1	1202111520
Assortment of outer lock ring	1	1202111510
Assortment hex. screws	1	1202114210
Assortment Woodruff keys	1	1202105010
Assortment grease nipple	1	1202111010
Assortment of dividing lever	1	1202113510
Assortment springs	1	1202113510

Shelf component	Quantity	Item
6-drawer module	1	291702737
Insert for box for assorted it	2	1935200010



F&G parts drawers

KWS6945M02

Brand: Kramp
 Dimensions: 44,4 x 58,0 x 34,0 cm
 Description: Assortment of technical and various accessories supporting Forest & Grasscare workshops containing the following: Drills, screws, copper disks, Starlock rings, mini hose clamps and Lock rings outer.
 Fits in 1.3 draws centre module

Description	Quantity	Item
Assortment of bohrcraft 180 m	1	1202187210
Assortment machine screws CS	1	1202034610
Assortment of copper disks, 5	1	1202113010
Assortment Starlock rings	1	1202111550
Hose clamp Minaba assortment	1	1202115030
Assortment of outer lock ring	1	1202111540

Shelf component	Quantity	Item
Drawer module	1	291702937



Description	Quantity	Item
Multi-spray 500ml	4	31460KR
Brake cleaner 500ml	4	31461KR
Degreaser 500ml	4	32651KR
Chain spray 500ml	4	30535KR
Penetrating oil 500ml	4	32649KR
Silicone spray 500ml	4	30532KR

Kramp technical sprays 1

KWS5409M01

Brand: Kramp
 Dimensions: 44,4 x 58,0 x 34,0 cm
 Description: Assortment of Kramp no. 1 technical sprays. containing the following types: Multi spray, Brake cleaner, Degreaser, Chain spray, Penetrating oil, and Silicone spray.
 Fits in 1 centre module

Shelf component	Quantity	Item
Center module for spray cans	1	291704737



Description	Quantity	Item
Glass cleaner 500ml	4	32650KR
Contact spray 500ml	4	32652KR
Cutting oil 500ml	4	32653KR
Aluminium high-temp. grease	4	488442KR
Silicone non-stick spray	4	453606KR
Resin remover 400 ml	4	454265KR

Kramp technical sprays 2

KWS5409M02

Brand: Kramp
 Dimensions: 44,4 x 58,0 x 34,0 cm
 Description: Assortment of Kramp no. 1 technical sprays. containing the following types: Glass cleaner, Contact spray, Cutting oil, Aluminium high.temp grease, Silicone non-stick and Resin remover.
 Fits in 1 centre module

Shelf component	Quantity	Item
Center module for spray cans	1	291704737

LOCTITE 2 Mid UK

KWS4240M03



Brand: Loctite
 Dimensions: 44,4 x 58,0 x 34,0 cm
 Description: Assortment of Loctite products containing the following types: Low-strength threadlock, Threadlock, Nut lock, Pipe sealant, Threadlock fine, Retaining compound, Elastic surface sealant, Cleaner, Adhesive, Quick metal, Alue for o-ring and Air cond. cleaner. Fits in 1 centre module

Description	Quantity	Item
Low-strength thrdlk 222 — 50ml	1	LC195743
Threadlock 243 50 ml	1	LC1335884
Nut lock 270 50ml	1	LC1335897
Pipe sealant 577 50ml	1	LC2068186
Threadlock, fine 542 — 50 ml	1	LC234422
Retaining compound 648 – 50ml	1	LC1804416
Elast surface sealnt 518 50 ml	1	LC229875
Cleaner aerosol 7063 400ml.	1	LC194814
3090 2C adhesive	1	LC1379599
Quick Metal 660-50ml	1	LC267328
glue 401 - 20g	1	LC1919341
Terostat 8596 Standard set	1	LC450532

Shelf component	Quantity	Item
Module 2 shelves	1	291704637

Complete modules

Screw modules

End modules

Centre modules

Base modules

Accessories



Paint Mid

KWS5393M01

Brand: Kramp/Gopart/Rostegal/Motip
 Dimensions: 44,4 x 58,0 x 34,0 cm
 Description: Assortment of KRAMP, Gopart, Rostegal and MOTIP paints in spray cans. Paint in the following colours: RAL 9005 jet black, Black matt. RAL 9010 pure white, RAL 3000 flame red, M.F. silver mist >1989 Primer grey green Primer grey, Primer red oxide, Rostegal Aerosol. Zinc spray, Clear varnish, Black exhaust paint and Silver exhaust paint.
 Fits in 1 centre module

Description	Quantity	Item
RAL 9005 jet black 400 ml	4	900504KR
Black matt 400 ml	4	919004KR
RAL 9010 pure white 400 ml	4	901004KR
RAL 3000 flame red 400 ml	4	300004KR
M.F. silver mist >1989 400ml	4	913504KR
Primer grey green 400ml aerosol	4	666604KR
Primer grey 400ml aerosol	4	777704KR
Primer red oxide 400ml aerosol	4	888804KR
Zinc spray 400 ml	4	722504GP
Clear varnish 400 ml	4	910004GP
Black exhaust paint 800°C	4	04031
Silver exhaust paint 800°C	2	04032

Shelf component	Quantity	Item
Box module 2x shelves	1	291704637



Fasteners DIN603 Mid

KWS6900M01

Brand: Kramp
 Dimensions: 44,4 x 58,0 x 34,0 cm
 Description: Assortment of DIN 603 carriage bolts with square neck. Metric 4.6 zinc-plated Starting from size M6 to M10. Most frequently ordered.
 Fits in 1 centre module

Description	Quantity	Item
Coach bolt & nut M6x30	50	603630
Coach bolt & nut M6x40	50	603640
Coach bolt & nut M6x50	50	603650
Coach bolt & nut M6x60	50	603660
Coach bolt & nut M6x70	50	603670
Coach bolt & nut M8x30	50	603830
Coach bolt & nut M8x40	50	603840
Coach bolt & nut M8x50	50	603850
Coach bolt & nut M8x60	50	603860

Description	Quantity	Item
Coach bolt & nut M8x70	50	603870
Coach bolt & nut M8x80	50	603880
Coach bolt & nut M10x30	50	6031030
Coach bolt & nut M10x40	50	6031040
Coach bolt & nut M10x60	50	6031060
Coach bolt & nut M10x70	50	6031070

Shelf component	Quantity	Item
Standard part module	1	291706837



Fasteners DIN912 Mid

KWS6905M01

Brand: Kramp
 Dimensions: 44,4 x 58,0 x 34,0 cm
 Description: Assortment of DIN 912 cylinder bolts with hexagon socket. Metric 8.8 zinc-plated Starting from size M4 to M10. Most frequently ordered.
 Fits in 1 centre module

Description	Quantity	Item
Hex sock hd bolt M4x10 8.8 zp.	25	912410
Hex sock hd bolt M5x16 8.8 zp.	25	912516
Hex sock hd bolt M5x20 8.8 zp.	25	912520
Hex sock hd bolt M5x30 8.8 zp.	25	912530
Hex sock hd bolt M6x16 8.8 zp.	25	912616
Hex sock hd bolt M6x20 8.8 zp.	25	912620
Hex sock hd bolt M6x25 8.8 zp.	25	912625
Hex sock hd bolt M6x30 8.8 zp.	25	912630
Hex sock hd bolt M8x16 8.8 zp.	25	912816

Description	Quantity	Item
Hex sock hd bolt M8x20 8.8 zp.	25	912820
Hex sock hd bolt M8x25 8.8 zp.	25	912825
Hex sock hd bolt M8x30 8.8 zp.	25	912830
Hex sock hd bolt M8x40 8.8 zp.	25	912840
Hex sock hd bolt M10x30 8.8 zp.	25	9121030
Hex sock hd bolt M10x40 8.8 zp.	25	9121040

Shelf component	Quantity	Item
Standard part module	1	291706837



Description	Quantity	Item
Hex sock CS screw M6x16 10,9 z	25	7991616
Hex sock CS screw M6x20 10,9 z	25	7991620
Hex sock CS screw M6x25 10,9 z	25	7991625
Hex sock CS screw M6x30 10,9 z	25	7991630
Hex sock CS screw M8x16 10,9 z	25	7991816
Hex sock CS screw M8x20 10,9 z	25	7991820
Hex sock CS screw M8x25 10,9 z	25	7991825
Hex sock CS screw M8x30 10,9 z	25	7991830
Hex sock CS screw M10x25 10,9	25	79911025

Fasteners DIN7991 Mid

KWS6910M01

Brand: Kramp

Dimensions: 44,4 x 58,0 x 34,0 cm

Description: Assortment of DIN 7991 countersunk bolts with hexagon socket. Metric 10.9 zinc-plated starting from size M6 to M12. Most frequently ordered. Fits in 1 centre module

Description	Quantity	Item
Hex sock CS screw M10x30 10,9	25	79911030
Hex sock CS screw M10x40 10,9	25	79911040
Hex sock CS screw M12x25 10,9	25	79911225
Hex sock CS screw M12x30 10,9	25	79911230
Hex sock CS screw M12x40 10,9	25	79911240
Hex sock CS screw M12x50 10,9	25	79911250

Shelf component	Quantity	Item
Standard part module	1	291706837



Description	Quantity	Item
Wood screw 6x40 4.6, zinc	100	571640P100
Wood screw 6x50 4.6, zinc	100	571650P100
Wood screw 6x60 4.6, th.zinc	100	571660P100
Wood screw 8x40 4.8, zinc	100	571840P100
Wood screw 8x50 4.8, zinc	100	571850P100
Wood screw 8x60 4.6, zinc	100	571860P100
Wood screw 8x70 4.8, zinc	100	571870P100
Wood screw 8x80 4.6, zinc	100	571880P100
Wood screw 8x100 4.8, zinc	100	5718100P100

Fasteners DIN571 Mid

KWS6900M02

Brand: Kramp

Dimensions: 44,4 x 58,0 x 34,0 cm

Description: Assortment of DIN 571 hexagon wood screws. 4.6 zinc-plated starting from size M6 to M12. Most frequently ordered. Fits in 1 centre module

Description	Quantity	Item
Wood screw 10x60 4.8, zinc	50	5711060P050
Wood screw 10x70 4.6, zinc	50	5711070P050
Wood screw 10x80 4.8, zinc	50	5711080P050
Wood screw 10x100 4.8, zinc	50	57110100P050
Wood screw 12x80 4.8, zinc	25	5711280P025
Wood screw 12x100 4.8, zinc	25	57112100P025

Shelf component	Quantity	Item
Standard part module	1	291706837



Car lamp cabinet MID

KWS2720M01

Brand: Kramp
 Dimensions: 44,4 x 58,0 x 34,0 cm
 Description: Assortment of car lamps.

Description	Quantity	Item
12 V H7 bulb assortment	2	GL1350
Bulb 12V 55W H1	2	B1208
Bulb 12V 55W H3	2	B1206
Bulb 12V 60/55W H4 P43t	2	B1210
Bulb 12V 21W BAU15s	10	B1219
Bulb 12V 21W BA15s	10	B1201
Bulb 12V 21/5W BAY15d	10	B1203
Bulb 12V 1,2W W2x4,6d	2	B1207
Bulb 12V 21/4W BAZ15D	10	B1257
Bulb 12V 10W BA15s	10	B1226
Bulb 12V 5W BA15s	10	B1202
Tubular bulb 12V 5W SV8.5	10	B1220
Festoon bulb 12V 5W SV8,5	10	B1204
Bulb 12V 4W BA9s	10	B1212
Bulb 12V 5W W2,1x9,5d	10	B1229
Bulb 12V 55W H7	2	KR432024P001

Shelf component	Quantity	Item
Car lamp cabinet module	1	291771037

Complete modules

Screw modules

End modules

Centre modules

Base modules

Accessories



Grease Gopart Middle

KWS5367M01

Brand: Gopart
 Dimensions: 44,4 x 58,0 x 34,0 cm
 Description: Multi-purpose grease is a natural-colour red. mineral oil-based lubricating grease saponified with a lithium base. 400 gram LUBESHUTTLE cartridge. Fits in 1 centre module

Description	Quantity	Item
Multipurpose grease EP	24	30400GP

Shelf component	Quantity	Item
Can module	1	291704737



Grease Gopart Lub Mid

KWS5367M02

Brand: Gopart
 Dimensions: 44,4 x 58,0 x 34,0 cm
 Description: Multi-purpose grease is a natural-colour red. mineral oil-based lubricating grease saponified with a lithium base. 400 gram LUBESHUTTLE cartridge. Fits in 1 centre module

Description	Quantity	Item
Grease cartridge lubeshuttle 4	24	30405GP

Shelf component	Quantity	Item
Can module	1	291704737



GOPART technical sprays 1

KWS5408M01

Brand: Gopart
 Dimensions: 44,4 x 58,0 x 34,0 cm
 Description: Assortment of GOPART technical sprays. containing the following types: Brake cleaner, Penetrating oil, Chain spray, Silicone spray and Quick start. Fits in 1 centre module

Description	Quantity	Item
Brake cleaner 500 ml	8	721005GP
Penetrating oil 400 ml	4	720504GP
Chain spray 400 ml	4	720004GP
Silicone spray 400 ml	4	721504GP
Quick start 400 ml	4	722004GP

Shelf component	Quantity	Item
Center module for spray cans	1	291704737



Gloves and first aid

KWS4430B01

Dimensions: 54,4 x 58,0 x 34,0 cm
 Description: Nitrile gloves and first aid kits
 2 types of Nitrile gloves in size L. all-purpose blue Nitrile glove and Nitrile extra black glove.
 And 1 Universal First aid kit

Description	Quantity	Item
First aid case Compact univers	1	SANAP07010
Nitrile disposable gloves L	1	HS15373
Nitrile Extra L dispos. gloves	1	HS536002

Shelf component	Quantity	Item
Base module 1x universal base	1	2917024137



PPE

KWS4440B01

Brand: 3M
 Dimensions: 54,4 x 58,0 x 34,0 cm
 Description: PPE products containing the following
 Classic soft ear plugs, Safety glasses and two types of dust masks.

Description	Quantity	Item
Classic soft ear plugs (200P)	1	PP01800P200
Univet 511 transparent glasses	5	1956UV511030100
Dust mask, FFP1 (10P)	1	8310P10
Dust mask, FFP3+V (10P)	1	8833P10

Shelf component	Quantity	Item
Base module 1x universal base	1	2917024137



Vehicle cleaning

KWS4236B01

Brand: Absodan/Dreumex
 Dimensions: 54,4 x 58,0 x 34,0 cm
 Description: Vehicle cleaning products.
 Lorry cleaner.

Description	Quantity	Item
Lorry cleaner 5 l	1	72000898

Shelf component	Quantity	Item
Lorry cleaner 5 l	1	2917024137



Threaded rods 4.6

KWS6950S01

Brand: Kramp
 Dimensions: 2,5 x 33,4 x 14,7 cm
 Description: Assortment of Threaded rods in 4.6 hardness zinc plated. Starting from size M6 to M20. Fits in 1 threaded bar module

Description	Quantity	Item
Threaded rod M6 4.6 1m galv.	3	975646
Threaded rod M8 4.6 1m galv.	3	975846
Threaded rod M10 4.6 1m galv.	3	9751046
Threaded rod M12 4.6 1m galv.	3	9751246
Threaded rod M14 4.6 1m galv.	3	9751446
Threaded rod M16 4.6 1m galv.	3	9751646
Threaded rod M18 4.6 1m galv.	3	9751846
Threaded rod M20 4.6 1m galv.	3	9752046

Shelf component	Quantity	Item
Threaded bar module	1	291708137



Threaded rods 8.8

KWS6952S01

Brand: Kramp
 Dimensions: 2,5 x 33,4 x 14,7 cm
 Description: Assortment of Threaded rods in 8.8 hardness zinc plated. Starting from size M6 to M20. Fits in 1 threaded bar module

Description	Quantity	Item
Threaded rod M6 8.8 verz.	3	9756
Threaded rod M8 8.8 verz.	3	9758
Threaded rod M10 8.8 verz.	3	97510
Threaded rod M12 8.8 verz.	3	97512
Threaded rod M14 8.8 verz.	3	97514
Threaded rod M16 8.8 verz.	3	97516
Threaded rod M18 8.8 verz.	3	97518
Threaded rod M20 8.8 verz.	3	97520

Shelf component	Quantity	Item
Threaded bar module	1	291708137



Finishing module divisible

291707237



Middle module divisible

291707137



Set of 3 variable dividers

29170730337



Cabinet module 89 cm

291773037

Complete modules

Screw modules

End modules

Centre modules

Base modules

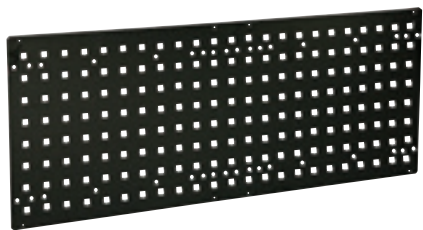
Accessories

**Cabinet module 44 cm**

291770037

**Car lamp cabinet module**

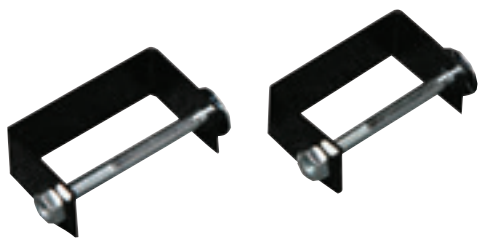
291771037

**Perforated panel**

291709037

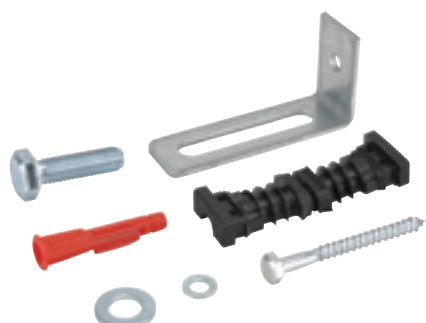
**Tool hook**

220413001



Shelf connector inc. fastening

291700137



Wall mounting set

2993781



Top sign

2917095137



KRAMP

Top sign Kramp

2917096178

Complete modules

Screw modules

End modules

Centre modules

Base modules

Accessories



It's that easy.

www.kramp.com