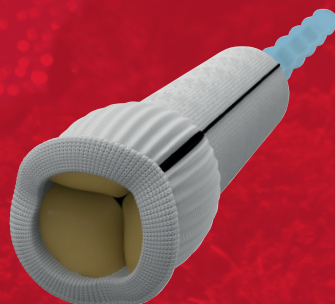


# KONECT

## RESILIA Aortic Valved Conduit

Resilient tissue.  
Ready to go.



The first pre-assembled, ready-to-implant valved conduit  
with **RESILIA** tissue.

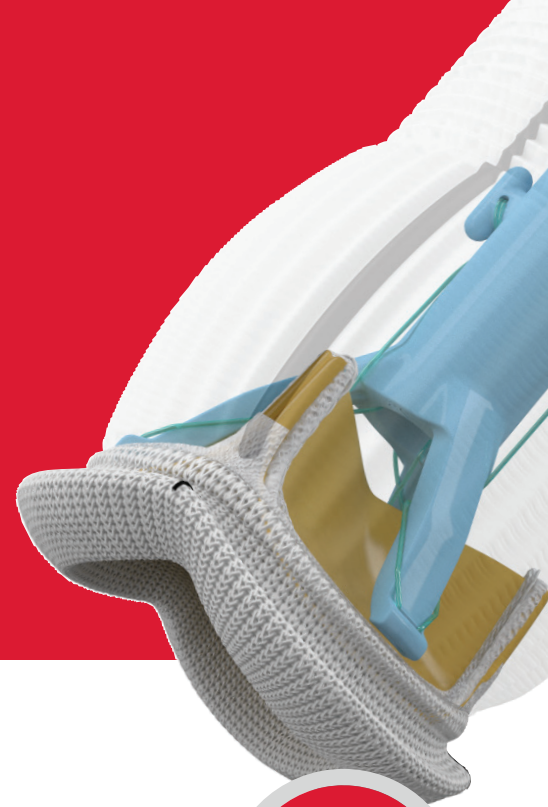


Edwards

# KONECT RESILIA

## Aortic Valved Conduit:

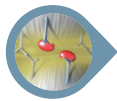
Developed specifically for  
bio-Bentall procedures.



### RESILIA tissue

Edwards Lifesciences' integrity preservation technology transforms bovine pericardial tissue into RESILIA tissue, effectively eliminating free aldehydes, while protecting and preserving the tissue.

RESILIA tissue is the first to deliver the combination of:



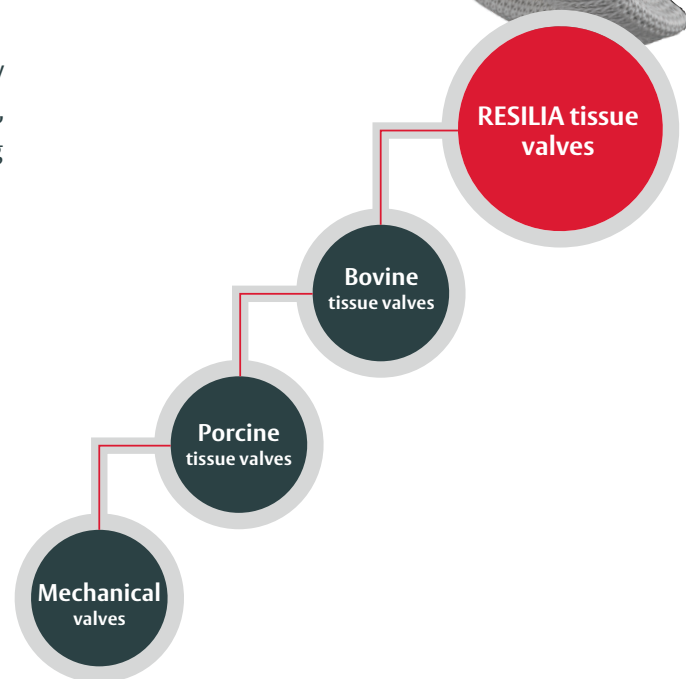
**Improved anti-calcification properties<sup>†</sup>**



**Improved sustained hemodynamic performance<sup>†</sup>**



**Stored dry and ready to use<sup>‡</sup>**



\* By eliminating procedure steps.


† RESILIA tissue tested against commercially available bovine pericardial tissue from Edwards in a juvenile sheep model.<sup>1</sup>

Clinical data on valves with RESILIA tissue up to 7-year follow-up have been published, with additional follow-up of up to 10 years in process.<sup>4</sup>

‡ Consult instructions for use for device preparation instructions.

§ As compared to self-assembled tissue valved conduits.





The ready-to-implant KONECT RESILIA aortic valved conduit helps patients maintain their active lifestyles and streamlines bio-Bentall procedures\*.

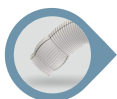
## A proven heritage

KONECT RESILIA aortic valved conduit is built on the proven performance of both the Carpentier-Edwards PERIMOUNT valve platform and the Valsalva graft.



### Valve platform

Proven performance of the PERIMOUNT valve design – a design with durability data spanning 30 years



### Valsalva graft

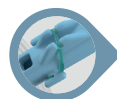
The world's first anatomically designed aortic root graft with over 15 years of aortic root surgery clinical experience<sup>2,3</sup>

## Ready-to-implant<sup>‡</sup>

The pre-assembled KONECT RESILIA aortic valved conduit intuitively eliminates procedural steps<sup>§</sup>, which is especially important in emergency cases.



**Edwards' quality-controlled pre-assembly of valve and Valsalva graft provides a consistent and reliable hemostatic connection**

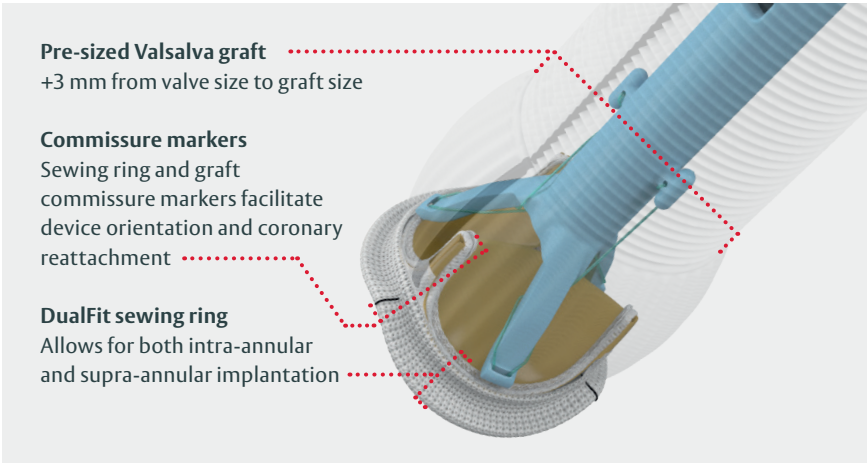


**Pre-mounted to an easy-access, single-cut release holder**

# KONECT RESILIA Aortic Valved Conduit

Model	Valve size
11060A	21 mm – 29 mm 21, 23, 25, 27 & 29 mm

Model	Accessories
TRAY1190	Accessory tray
1190	Individual sizes 19 mm* – 29 mm
1190SET	Sizer set 19 mm* – 29 mm



**For use only with the dedicated sizers that replicate the DualFit sewing ring (Model 1190 Sizers and Tray)**



\* KONECT RESILIA aortic valved conduit size 19 mm not available.

## References

1. Flameng W, et al. A randomized assessment of an advanced tissue preservation technology in the juvenile sheep model. *J Thorac Cardiovasc Surg.* 2015;149:340–5.
2. De Paulis R, et al. A new aortic Dacron conduit for surgical treatment of aortic root pathology. *Ital Heart J.* 2000;1(7):457-63.
3. De Paulis R, et al. Long-term results of the valve reimplantation technique using a graft with sinuses. *J Thorac Cardiovasc Surg.* 2016;151:112-9.
4. Beaver T, Bavaria JE, Griffith B, et al. Seven-year outcomes following aortic valve replacement with a novel tissue bioprosthesis. *J Thorac Cardiovasc Surg.* 2024 Sep;168(3):781-791

**Medical device for professional use. For a listing of indications, contraindications, precautions, warnings, and potential adverse events, please refer to the Instructions for Use (consult [eifu.edwards.com](http://eifu.edwards.com) where applicable).**

Edwards, Edwards Lifesciences, the stylized E logo, Carpentier-Edwards, DualFit, KONECT, KONECT RESILIA, PERI, PERIMOUNT and RESILIA are trademarks of Edwards Lifesciences Corporation or its affiliates. All other trademarks are property of their respective owners.

© 2025 Edwards Lifesciences Corporation. All rights reserved. PP--EU-9913 v1.0

Edwards Lifesciences Sàrl • Route de l'Etraz 70, 1260 Nyon, Switzerland • [edwards.com](http://edwards.com)

