

# Specialized Transportation – What's a log got to do with it?



**Special Education** Solutions

This information is provided for educational purposes only to facilitate a general understanding of the law or other regulatory matter. This information is neither an exhaustive treatment on the subject nor is this intended to substitute for the advice of an attorney or other professional advisor. Consult with your attorney or professional advisor to apply these principles to specific fact situations.

# Things we will cover

- Definition
- IEP Documentation
- Specialized Transportation Log Components
- Do's and Don'ts
- Q & A



# What is Specialized Transportation?

A billable SHARS service when combined with another billable SHARS service provided to the student on the same day.



**I still don't  
get it**

LET'S BREAK DOWN THE  
BILLABLE COMPONENTS

**HUWA**

Keyword: Adaptation



# Possible Adaptations

**Wheelchair lift**

**Child Protective Seating**

**Seatbelts or Harness restraint**

**Air conditioning**

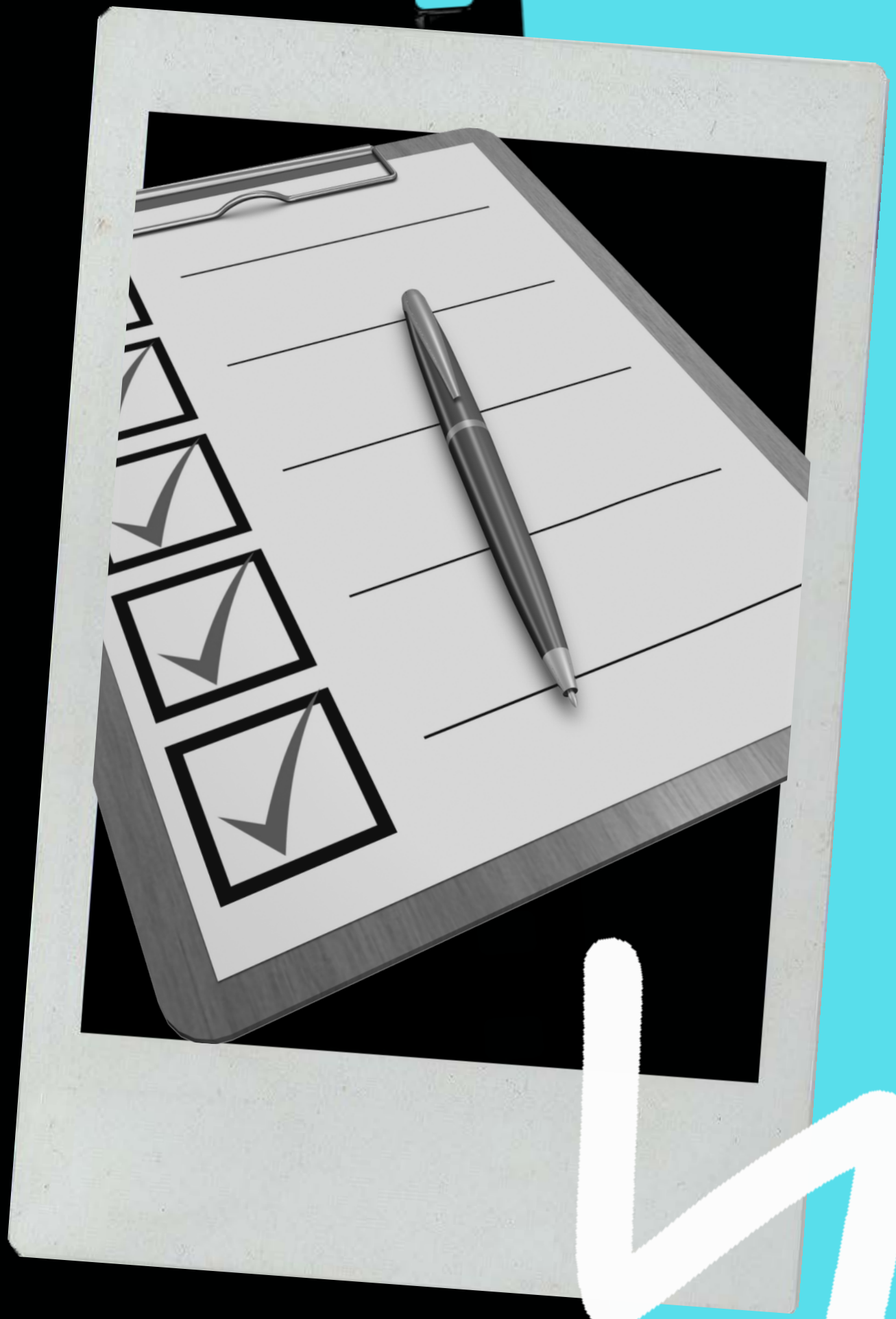


**The real question is...**

**Is this  
adaptation for all  
or just some?**

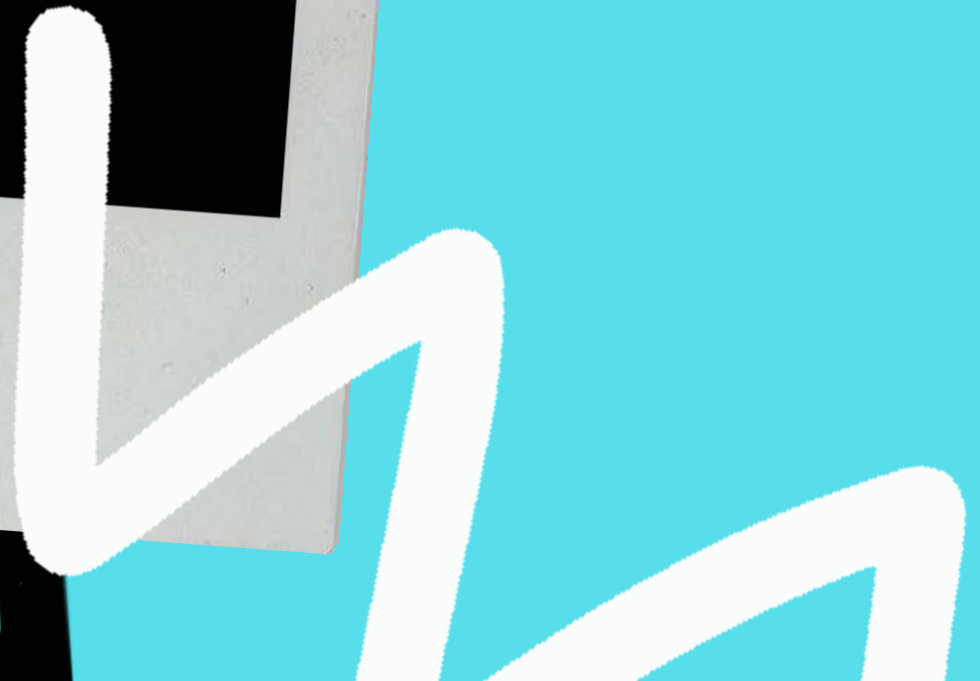


TX 5063



# **But wait! There's more**

**IEP Documentation**







## COMPLIANT DOCUMENTATION

"Don needs specialized transportation with the adaptation of a harness restraint in order to safely ride the bus daily to and from school. Without the harness Don will run in the bus aisle."

## TRADITIONAL DOCUMENTATION

"Tien needs special transportation to and from school on a daily basis"

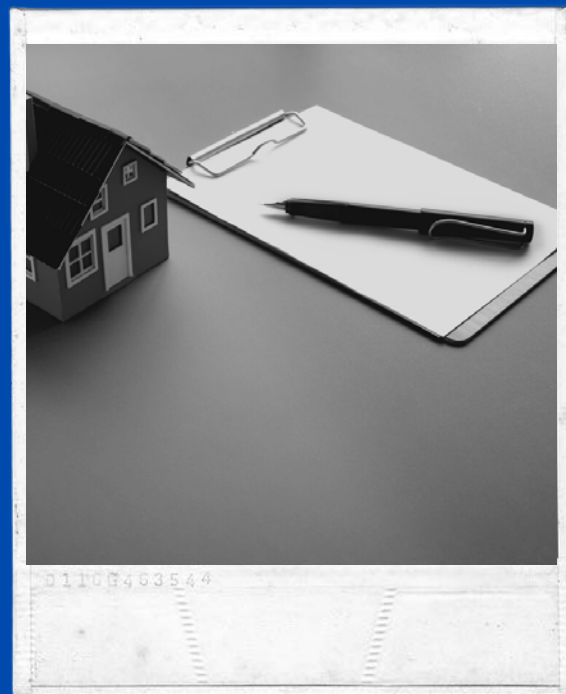




# WHERE DOES THIS INFO GO?



**SHARS Operating  
Procedures**



**Transportation  
Supplement**




**Schedule of  
Services**



**Is your transportation  
log compliant?**

**Elements of a  
compliant log**





# LEA Name

**Student Full Name and Medicaid #**

**Bus Route Name or Number**

**Place to indicate am/pm trips and initials**

**Driver & Service Provider's Name, Signature and Date**

**PCS provided and absence notation**  
when applicable

**Dates of service and day of the week**



Trip Logs must be maintained daily





# Do's and Don'ts

**Train your drivers and monitors**

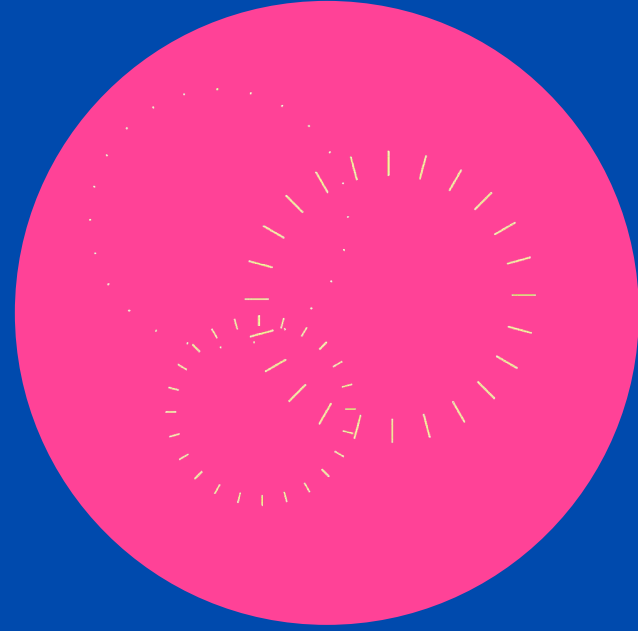
**Don't use checkmarks on the log**

**Only bill for specialized transportation when a corresponding service is provided the same day to the student**



# Wrap Up

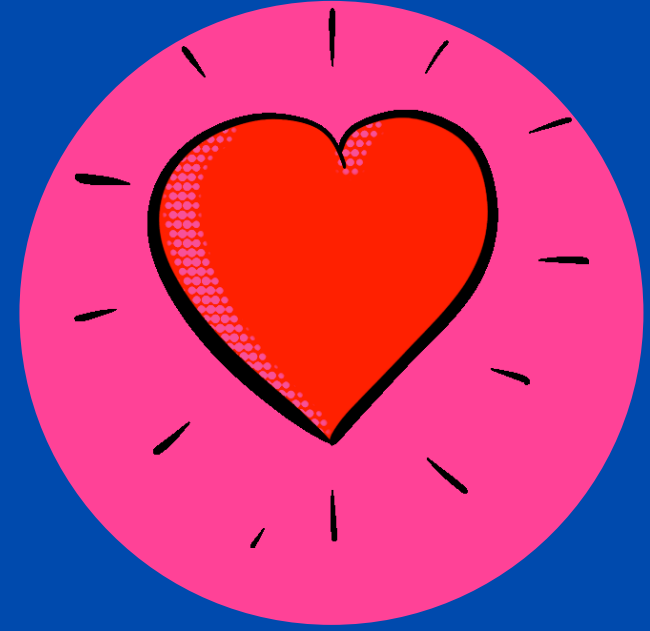
## QUESTIONS



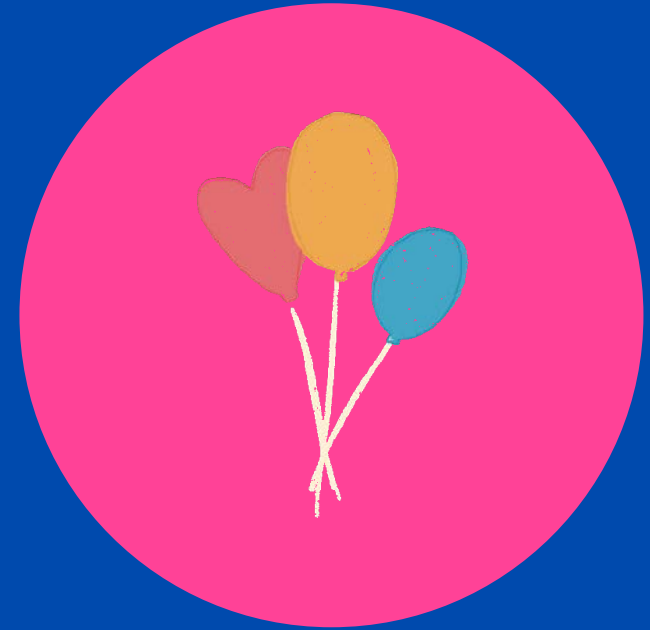
Ah-ha!



Comments



Likes



Take-Aways



# TASB Special Education Solutions

A DEDICATED TEAM OF EXPERTS

Take our survey:

<https://tinyurl.com/y2dhmph5>



SCAN ME

## Physical Address

12007 Research Blvd,  
Austin, TX 78759

## Phone Number

888-630-6606

## Email

[shars@tasb.org](mailto:shars@tasb.org)

The information in this presentation may include the intellectual property of third parties.

# Contact Us

LET'S WORK TOGETHER.



**Special Education Solutions**