

Where safety  
meets the road



ENNIS-FLINT<sup>®</sup> by PPG  
Traffic solutions products



We protect and beautify the world<sup>®</sup>



## Pavement and traffic safety markings from a respected global coatings leader

PPG is a world-renowned coatings leader with almost 140 years of experience protecting and beautifying everything from cars and houses to packaging and industrial equipment.

Our ENNIS-FLINT® by PPG brand of traffic solutions products are designed to help make roads, airports and pedestrian areas safer for everyone. Our experience encompasses traditional paints; high-performance formulas and plural components for road and highway striping; preformed thermoplastic for transverse markings and heavy-duty intersections; custom horizontal surface signage; and more.

# Streets, highways and parking lots



## Ennis-Flint by PPG PREMARK® and PREMARKXF® Preformed Thermoplastic Products

Offering exceptional durability and engineered to last 6 to 8 times longer than traditional waterborne paint, our heavy-duty, intersection-grade pavement marking materials are applied with a propane heat torch or infrared heater.

PreMark and high-durability, extra-flexible PreMarkXF materials are offered with the following options: beaded, non-beaded, skid only or with VIZIGRIP® visibility and anti-skid treatment. There are no minimum road or ambient temperature requirements for application.

Lines, legends, arrows and symbols

Accessibility markings

Border and block contrast markings

Route and speed limit shields

Manhole protection rings

Rumble bars

Adhesives for raised pavement markers and delineator posts



## Ennis-Flint by PPG HOTTAPE® Preformed Thermoplastic Products

These products, provided in rolls, include lines, arrows, bike lane markings, railroad markings and words such as STOP, ONLY and SCHOOL. The road must be preheated to a specific temperature prior to application.



## Ennis-Flint by PPG HPS®8 Integrated Multipolymer Markings

This unique, multi-polymer binder system offers very high durability, long-term retroreflectivity and fast cure, yet can be applied with standard thermoplastic equipment. HPS8 is applied via extrusion at thicknesses ranging from 60 to 120 mils.



## Ennis-Flint by PPG HPS® Series Plural Component Markings

Made up of monomers, polymers and pigments these markings offer outstanding adhesion to asphalt/concrete, retroreflectivity, excellent resistance to weathering and abrasion, and a formulation that lasts longer than paint.

HPS®7 MMA structured markings

HPS®6 MMA markings

HPS®4 multifunctional acrylate epoxy

HPS®3 fast-cure epoxy markings

HPS®2 slow-cure epoxy markings



## Ennis-Flint by PPG EF Series Hot-Applied Thermoplastic Markings

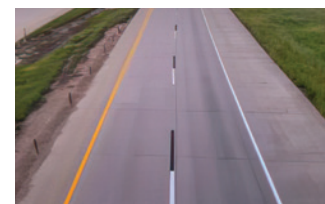
Hot-applied thermoplastic marking material is a 100% solids compound containing pigments, glass beads, binder and filler, which becomes liquid when heated. It is durable, practical and enhances retroreflectivity.

PAVEMARK® general purpose markings

THERMO-QUIK® touch-up markings

THERMODROP® pelletized thermoplastic

VIBRALINE® profiled edge line markings



## Ennis-Flint by PPG EF Series Traffic Paints

EF Series traffic paints are available in waterborne and solvent-based technologies, with formulations that can be applied from temperatures as low as 35° F (2° C) to as high as 120° F (49° C).

Standard- and fast-dry traffic paints

Low-temperature traffic paint

High-build traffic paint

Dirt-resistant traffic paint



## Ennis-Flint by PPG STIMSONITE® Pavement Markers

We offer surface-mounted and snow-plowable markers and accessories for roadway delineation that can help increase nighttime visibility, especially during rainy conditions.

C80 surface-mounted RPMs

101 snow-plowable markers

201 snow-plowable lens cradles



SOLUTIONS FOR

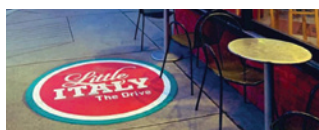
## Streetscapes and decorative crosswalks



### *Ennis-Flint* by PPG TRAFFICSCAPES® Surface Systems\*

Comprised of the *Ennis-Flint* by PPG DECOMARK® surface signs, DURATHERM® inlaid surface system and TRAFFICPATTERNS® interconnected surface system product lines, *TrafficScapes* preformed thermoplastic surface systems have been engineered for streetscape and crosswalk projects that require durability, safety, aesthetics and low maintenance.

For more details about the products below and other *TrafficScapes* surface system products, please contact your PPG representative.



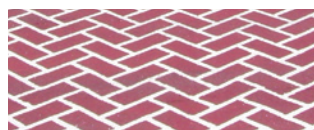
### *DecoMark* Surface Signs

These beautiful, high-durability, long-lasting horizontal surface signs can be used to enhance community pride or raise brand awareness, and are custom constructed in 33 brilliant standard colors.



### *Duratherm* Inlaid Surface System

Designed to mimic brick patterns and other inlaid shapes, these no-slip, snowplow-friendly, preformed thermoplastic materials deliver long service life while also providing a unique, beautiful addition to your streetscape.



### *TrafficPatterns* Interconnected Surface System

A cost-effective alternative to brick and stone pavers, this 125-mil material has a traditional look and is applied to asphalt or concrete. Provided in interconnected sheets for ease of handling and application, there are many color and pattern design combinations available.



### TRAFFICPATTERNSXD® Impressed Surface System

This traffic-tough, 150-mil-thick preformed thermoplastic crosswalk material provides traditional brick-like aesthetics. Available in a variety of colors, *TrafficPatternsXD* material is stamped after heating with customized grids to resemble brick, slate, cobblestone, tile or other unique patterns.

\* The use of certified applicators is required to ensure proper application of all *TrafficScapes* surface system products with the exception of *DecoMark* surface signs.







SOLUTIONS FOR

## Bus and bike lanes



### *Ennis-Flint* by PPG **PREMARK®** and **PREMARK®XF** Preformed Thermoplastic Bike Lane Markings

Preformed thermoplastic is engineered for high-traffic areas subjected to vehicular traffic and is ideal for intersections, bike boxes and conflict points with lane crossings.

Available in bike lane green and transit red colors, the preformed thermoplastic material can be formulated with **VIZIGRIP®** retroreflective glass beads and anti-skid elements or with anti-skid elements only. White bicycle symbols are always made with the *ViziGrip* option for skid resistance and retroreflectivity.

With easy installation and no minimum road or air temperatures, *PreMark* and extra-flexible/durable *PreMarkXF* products represent our longest-lasting offerings.

Bus and bike lane panels

Bus and bike lane markings



### *Ennis-Flint* by PPG **MMA<sup>®</sup>** Colored Lane Treatments

Utilizing a specialized system that combines state-of-the-art methyl methacrylate (MMA) resins with hard-wearing aggregate and premium pigments, *MMA* bus and bike lane treatments provide remarkable traction in large-area applications with various high-visibility colors.

The treatment is delivered in prepackaged kits for easy on-site mixing, can be easily spread onto surfaces in a wide temperature range and is ready for traffic in under 60 minutes.



SOLUTIONS FOR

## Airfields



### **Ennis-Flint by PPG AIRMARK®** Preformed Thermoplastic Material

This durable, retroreflective preformed thermoplastic pavement marking material was designed for airside linear delineation and horizontal surface signage at Part 139 and general aviation airports. *AirMark* material is best suited for use on taxiways, hold positions, geographic positions, vehicle roadways, aprons, ramps, aircraft parking and tie downs.

*AirMark* preformed thermoplastic material is available in five long-lasting colors that contain organic pigments and no heavy metals, but are resistant to aviation fuels, motor fuels, lubricants, de-icers and other common airfield chemicals.



### **Ennis-Flint by PPG EF Series Traffic Paints**

EF Series traffic paint is available in Fed. Std. No. 595 colors for airfield applications. Formulated for use in a wide range of applications, these waterborne traffic paints can be applied from temperatures as low as 35° F (2° C) to as high as 120° F (49° C). Waterborne paints are suitable for application on both bituminous and concrete substrates and can be sprayed with airless or conventional spray equipment.



Standard- and fast-dry traffic paints

Low-temperature traffic paint

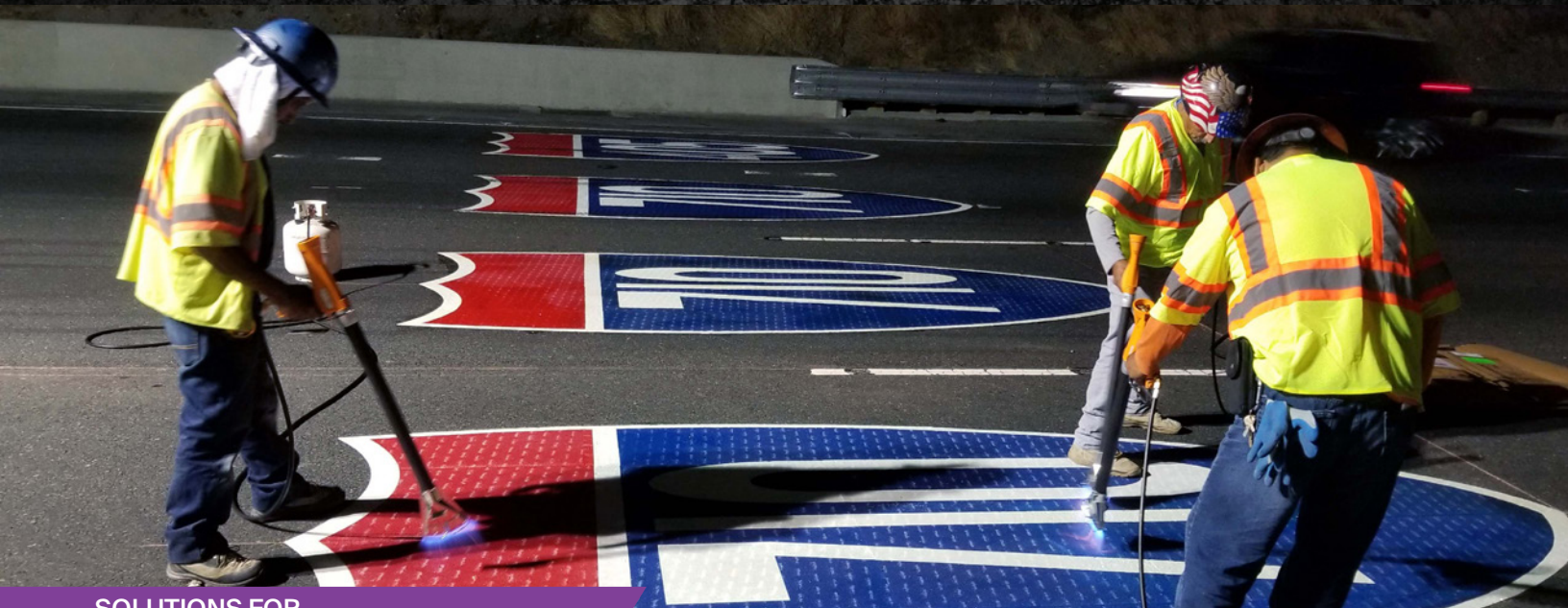
Dirt-resistant traffic paint

High-build traffic paint









SOLUTIONS FOR

# Application and testing



## Ennis-Flint by PPG STREETHEAT® Infrared Heaters, Stamping Templates, Tools and Accessories

*StreetHeat* infrared heaters give certified applicators or regulatory users the ability to easily apply preformed thermoplastic markings and create an impression in the asphalt surface using a combination of heat, a wire rope stamping template and a plate compactor. The heaters are available in a variety of models and sizes, and can be used with dozens of different, separately sold stamping templates to create brick, cobblestone and other patterns.

The *StreetHeat* line also includes various finishing tools and drill bits, sealer guns, thermo bridges and infrared thermometers to help your installation go smoothly.

For more information about specific heater models, templates, tools and accessories, please contact your PPG sales representative.

## Propane Heat Torches

Our propane heat torches are specially designed for applying preformed thermoplastic pavement markings and adhesives, with models designed for weight, fuel efficiency and automated piezo lighting.

---

[3000 EX Heat Torch](#)

---

[Magnum Heat Torch](#)

---

[Tornado Heat Torch](#)



## Delta Gauges and Retroreflectometers

Delta instruments are available to properly measure nighttime retroreflectivity or the thickness of dry, post-application pavement markings. The results are repeatable, reproducible and traceable to the National Institute of Standards and Technology (NIST) through an ISO 17025-certified testing and calibration laboratory.





## PPG: WE PROTECT AND BEAUTIFY THE WORLD®



### A trusted global coatings leader

Operations in 75+ countries, with 100+ manufacturing facilities and 50,000+ employees



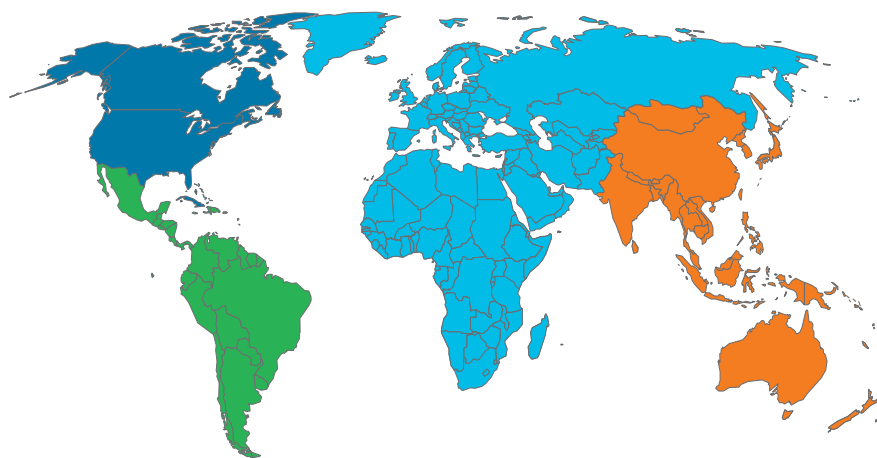
### Commitment to sustainability

Over 35% of annual sales from sustainably advantaged products and processes



### Dedication to innovation

3,500+ technical employees and \$440 MM average annual R&D investment



### Traffic solutions from PPG

- Our products are engineered, manufactured and supplied to provide optimal performance, lasting value and to extend the life of your pavement marking program.
- Pavement marking formulas are engineered to meet MUTCD standards, specifications and requirements.
- Our products help save lives, prevent injuries and reduce crashes all over the world.
- Our network of technical service professionals is focused on helping you unlock the value of your investment and maximize uptime to keep your business running smoothly.
- Strategically placed global manufacturing and distribution centers allow us to get you the materials you need, when you need them.

To learn more about traffic solutions from PPG, visit us online at [ennisflint.com](http://ennisflint.com), or contact one of the international sales offices listed below.

### PPG Regional Headquarters

■ PPG Global Headquarters / PPG North America  
Greensboro, NC, USA  
1.800.331.8118  
trafficsolutions@ppg.com

■ PPG South America  
Buenos Aires, Argentina  
+54 115275-9624  
TS-ARG-SalesSA@ppg.com

■ PPG Europe, Middle East and Africa  
Chorley, United Kingdom  
+ 44(0).1257.225.100  
TS-CHO-Info@ppg.com

■ PPG Asia Pacific  
Ingleburn, New South Wales  
02.9829.4275  
tsausaccounts@ppg.com

■ PPG New Zealand  
Glendene, Auckland  
09.818.6410  
ppgnzorders@ppg.com

**WARNING:** Certain colors of this product may contain chemicals known to the State of California to cause cancer and/or reproductive harm. For more information go to [P65Warnings.ca.gov](http://P65Warnings.ca.gov).

This document contains general information only and should not be construed as creating any warranties, express or implied. Please contact a PPG representative for additional information.

The PPG Logo and *We protect and beautify the world* are registered trademarks of PPG Industries Ohio, Inc. *Ennis-Flint*, *AirMark*, *DecoMark*, *DuraTherm*, *HotTape*, *HPS*, *MMAx*, *PaveMark*, *PreMark*, *PreMarkXF*, *Stimsonite*, *StreetHeat*, *Thermo-Quik*, *TrafficPatterns*, *TrafficPatternsXD*, *TrafficScapes*, *Vibralline* and *ViziGrip* are registered trademarks of the PPG Group of Companies. The *IN Logo* is a registered trademark of LinkedIn Corporation. ©2023 PPG Industries, Inc. All rights reserved. 03/23 TS028

